

DISCOVER OUR

Ram Nation



#aisgz



Why AISG?

Creative Learning Driven By Quality Teaching

Our teachers are exceptional individuals who are passionate about bringing our mission to life and nurturing our students to be ready for a future that is theirs. AISG is looking for forward-thinking individuals who are dynamic instructional leaders who wish to contribute to an environment that values creative learning and quality teaching.

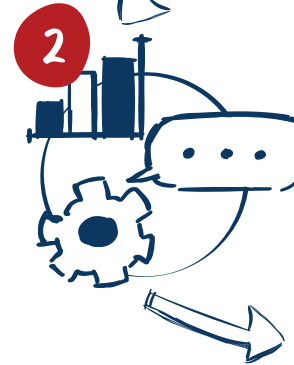
When you work at AISG, you become part of a school renowned for its vibrant, positive community spirit, its collaborative focus on high levels of learning for all students, and its commitment to dynamic, compassionate, and connected learning.

3 Reasons

you are going to love teaching at AISG:



We are a **warm, welcoming, nurturing, family-focused learning community.**



We are preparing students for the **future** they choose by **passionately teaching the knowledge, skills and dispositions** our students will need to **thrive** in our ever-changing world.



Our **student-centered** inquiry-based approach leverages **technology** and provides **creative** and differentiated **learning opportunities** to ensure all learners **achieve personal excellence** by balancing **challenge and rigor** with **encouragement and support.**



OF AN AISG TEACHER

Collaborative

Dynamic and Engaging

Student-centered with
a focus on kindness
and compassion

Agile

***Open-minded
and Reflective***

Holds themselves and others
to a high standard

Happy!



COLLABORATIVE



Engaging



Happy!



KINDNESS



STUDENT-CENTERED



Reflective



Agile



HIGH STANDARDS



THE AISG

Master Facilities

PLAN



Our Vision For Learning

AISG's new campuses will be a place that inspires our students, our teachers and our staff to be their best — a hub of dynamic, compassionate, and connected learning where future-ready learning reigns supreme.

One of the essential elements of a future-ready school is learning spaces redesigned to facilitate the acquisition of 'future-ready' skills and dispositions.

At the beginning of this master facilities plan process we had one simple concept in mind: to create learning spaces that would facilitate nurturing future-ready skills and dispositions in our students.

As part of our Mission and Visioning process (completed in SY2016-17) we looked at the way in which education is changing to produce future-ready students and the corresponding way in which learning spaces are changing to facilitate that learning. This process afforded us incredible insight into how very different the world will look in 10, 20, or 30 years, and the importance of developing students with the skills and dispositions to be able to meet that unknown future head on.



The Plans

AISG's exciting plans for a new campus redevelopment project will transform educational spaces across both Er Sha and Science Park campuses into world-class learning environments.

The project will see Grade 3 – 5 students relocated from Er Sha to Science Park, seeing Er Sha transform into an early learning center. The redevelopment across both campuses will not only enable the school to support its Mission and Vision it will mean there is a 60% increase in floor space at Science Park and a 65% increase in space per child on our Er Sha campus. Construction began on the Science Park campus in Summer 2019 and is scheduled for completion by the end of SY20-21. Er Sha Campus will then begin its refurbishment beginning SY21-22.

AISG's Science Park campus - located on the southwest corner of Kexiang Road and Kaitai Avenue - sits on almost 30,000sqm allowing for an expansion of our current

amenities to include a full size track, three sports fields, a tennis court, a 25m pool, rooftop play space and designated parking spaces for parents, guests and events.

Upon completion, our Science Park campus will host Grades 3-12 in inspiring educational facilities that support our Mission to nurture future-ready individuals to aspire, achieve and contribute. As well as the enhanced classroom spaces, Science Park will feature a learning atrium, enhanced athletics facilities, including swimming facilities, two gymnasiums, and rooftop spaces.

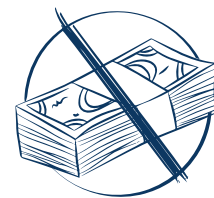
Our Er Sha campus, located on the beautiful Er Sha Island and just over 10,000sqm in size, will be re-designed to create an Early Learning environment that is optimal for younger children. This will include refurbishing the existing buildings and creating an external landscape for play-based learning making it perfect for inspiring young, developing minds. Construction on Er Sha campus is scheduled to begin SY21-22.



AISG AT A Glance

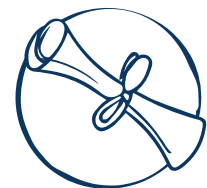
Rich Heritage

Founded in 1981, we are the longest established international school in South China and the only not for profit international school in Guangzhou.



World Class Educators

73% of our faculty has a Master's degree or higher.



Truly International

We have over 1000 students from over 50 different countries around the world.



University Matriculation

The Class of 2019 received offers from more than 107 universities and will be flying to over 40 top universities in more than 13 countries.



Innovation & Creation

We place an emphasis on using technology for creation over consumption. By giving students agency in their learning and promoting a maker's mindset, teachers ensure every student is an empowered creator.



TEACH IN THE

Heart of Asia



WASC Accredited

Student-centered

Only not-for-profit
international school
in Guangzhou

1060+

STUDENTS

111

FACULTY

73% have a masters
degree or higher

50

NATIONALITIES

**IB. World
School**

(PYP & IBDP),
PRE-K
TO GRADE 12

Child Protection

Prioritizing the Safety of Our Children

Child Protection and Safeguarding is of the utmost priority for AISG. Our goal is provide a safe and secure environment in which all students can thrive socially, emotionally and academically. AISG is committed to the prevention of child abuse and to the protection of children in accordance with the United Nations Convention on the Rights of the Child, of which the People's Republic of China is a signatory.

The Pillars of Child Protection at AISG

Our first priority is to provide a safe and healthy environment for students and the entire AISG community.



Background Checks

All AISG employees undergo regular background checks as a condition of their employment.



Employee Training

All employees are trained annually on child protection issues by a qualified child protection consultant. All new employees are immediately trained.



Child Safety Committee

Our Child Safety Committee is comprised of a representative from each division, and facilitates the swift response, investigation, and action regarding any instances of child abuse or neglect.

A panoramic nighttime view of Guangzhou, China. The Canton Tower, a tall, colorful, lattice-structured tower, stands prominently on the left bank of the Pearl River. The river flows through the center of the image, reflecting the city lights. In the foreground, a multi-lane highway with light trails from moving vehicles curves along the riverbank. The background is filled with a dense skyline of illuminated skyscrapers under a twilight sky with soft clouds. The overall scene captures the vibrant urban life and modern architecture of the city.

Life in Guangzhou

Guangzhou, the historic city of Canton, is the capital city of the Guangdong province, the largest city in southern China and the third largest in the country. It is a dynamic, international community located on the banks of the Pearl River with a population of over 14.5 million people.



Although Hong Kong is less than two hours away by train, Guangzhou is an exciting center in its own right, rich with history and culture, and offering a myriad of things to see and do in the city and surrounding areas. Guangzhou is located in the heart of China's Pearl River Delta, which is one of the most rapidly developing regions of the world.

This homeland of the Cantonese language, cuisine and culture also has a long history as an international trade center and boasts restaurants and cultural offerings from around the world. International restaurant, hotel and retail chains can be seen throughout Guangzhou, alongside local establishments, street vendors and markets.

There are fitness clubs, parks, shopping malls, local markets, cinemas, museums, art galleries, concert venues, bowling alleys, ice skating rinks, zoos – everything you might expect from a city of its size, with lots to do for all ages. There is also a vibrant nightlife scene, with a wide variety of pubs, bars and dance clubs.

Weather

Guangzhou's climate is subtropical. There are four distinct seasons, with some outlasting others. Fall and Spring are long and offer very pleasant weather. Winter is mild but temperatures can fall to around 45° F (8° C) in the months of December, January and February. Summer is hot and humid with temperatures reaching 90-100° F (32-37° C). Summer generally lasts from June through September, and the most rain falls in the months of May and June. Guangzhou lies on approximately the same latitude as Havana, Cuba, and Calcutta, India. Its longitude is approximately in line with Bali, Indonesia.

Community

There are approximately 500,000 expats from over 150 countries living in Guangzhou at any given time. Many AISG families have connections to international business, manufacturing or one of the many consulates present in the city. While some expatriate families live on Er Sha Island, others live in new housing developments in other areas such as Zhujiang New Town Tianhe District and the recently developed Pazhou District.

Housing & Domestic Help

Apartment living is the norm for faculty. New staff have rent-controlled accommodation provided by the school for the first 12 months of their contract. After this, faculty will be able to either stay on at the same apartment or move to new housing of their choosing.

Most apartments are part of multi-building apartment complexes with leisure facilities and gardens. Broadband internet access and English-language cable television are readily available.

The availability of domestic help is one of the most convenient things about life in Guangzhou. Most expatriates hire an Aiyi (pronounced "ai-yee") shortly after arriving in China, either full-time or part-time. An Aiyi will typically do the cleaning, washing and ironing, shopping, cooking and other household jobs as needed.

Most Aiyis are the ultimate in service personnel, managing the household and generally making life more pleasant. Even if you are not used to household help, Aiyis can be valuable partners who can assist with various aspects of life in China. They speak the language and know how and where to get things done. If you have an appliance with a frayed cord, your Aiyi can get it fixed. If you don't have time to pay a bill or go to the post office, your Aiyi can assist. A very general idea of the cost of domestic help is about \$20 USD per day.

Getting Around

School Transportation

When school is in session, staff buses shuttle faculty from several convenient pick-up points in the city to the Elementary campus on Er Sha Island or the Middle / High School campus at Science Park. The faculty buses take about 20 minutes from central Guangzhou to Er Sha and about 40 minutes to Science Park, depending on traffic.



When school is in session, staff buses shuttle faculty from several convenient pick-up points in the city.

There are many
and varied
shopping
opportunities in
Guangzhou,
from large
department stores
to street stalls.



There are two types of student school buses: AISG buses which make select stops in a particular area and “estate buses,” which take students living at a particular housing complex directly to school and back. Children of faculty members need to sign up for the bus service appropriate for their needs, and then AISG covers the cost.

Private / General Transportation

For evenings and weekends, public transportation in the city of Guangzhou is plentiful and all areas are accessible through one form or another – taxis, buses or the excellent subway system.

Taxis are metered, start at 10RMB, and are available all over town. Buses are inexpensive (approximately 2RMB) and run often. The subway system is very clean and efficient and costs slightly more than the bus. Most faculty do not buy a car or feel the need to have one and the costs of buying and maintaining a car are high.

Shopping

There are many and varied shopping opportunities in Guangzhou,

from large department stores to street stalls. Carrefour, Metro, and IKEA all have large branches in the city, with household appliances, dishes, electronics, clothes, sundry items and food. Major supermarkets carry a number of imported foods, and foreign food specialty shops have a wide selection of products. There is a pearl and jade market, an antiques market, a kitchen market and a fabric market with tailors in the building. There is also a western clothing market that caters to foreign clients and sizes. Guangzhou has a handful of English-language bookshops, although many residents order books from internet retailers.

Sports

Most apartment complexes have some sports facilities that can be used for a nominal fee – almost always an outdoor swimming pool, often a gym (although many are very basic), sometimes a tennis court, table tennis room and/or snooker room. There are also many sport centers throughout the city that cater to most sporting enthusiasts. Golf is available in Guangzhou, but is somewhat expensive. The Chinese are very health conscious and see nothing odd about Westerners out

in exercise gear. Tai chi and badminton are popular local activities.

Orientation to Guangzhou and AISG

AISG offers a comprehensive teacher orientation program that begins even before you reach Guangzhou through teacher email buddies who offer advice about your move and new job. The moment you arrive in Guangzhou, you will have personal attention. After being greeted at the airport, you will have opportunities for guided shopping, exploring and dining. Your new home will be stocked with the basics, fitted with a computer connection, and you will be given a temporary cell phone programmed with the numbers of staff ready to answer your questions or assist with any problems.

Safety and Security

Like any large city, crime does exist in Guangzhou, but the city is generally regarded as being safer than many large cities in North America or Europe. Most apartment complexes have security guards who limit access to the complex and a key card or code is usually required for access into high-rise buildings within.

In the evenings, there are people on the streets until quite late, and many expatriates feel safer out late at night than they would in other cities abroad.

Guangzhou has a number of international medical and dental clinics that are frequented by the expatriate community, and more specialized treatment can be conveniently sought in Bangkok, Hong Kong or Singapore.

Banking

Faculty receive their salaries and allowances in Chinese RMB. The school will arrange to open a Bank of China (BOC) account for each employee and, on a monthly basis, AISG will deposit RMB salaries into each employee's BOC account.

If an employee wants part of the RMB salary to be converted into

USD, AUD or CAD and deposited into an overseas account, the school will facilitate this conversion and transfer of funds once per month.

Travel

Many faculty members enjoy traveling to other Chinese or Asian destinations during school holidays. There are daily flights from Guangzhou to well-known sites throughout China, as well as to lesser known destinations such as the nearby beach resorts on Hainan Island. There is a high-speed rail connecting Guangzhou to Beijing. This offers a scenic and comfortable trip in less than half the time of the regular northbound trains.

Trains also travel between Guangzhou and Hong Kong throughout the day, and Macau is just two hours away by bus. Guangzhou's Baiyun International Airport has direct flights to Europe, North America and Australia as well as to cities throughout Asia. Packages to east and southeast Asian destinations are among the most popular options.



Excited... to apply to become a part of our Ram Nation?

AISG seeks teachers with a minimum of a Bachelor's degree, teaching certification, three years of teaching experience, a willingness to participate in extracurricular activities, and an interest in living in a dynamic Asian setting.

Previous experience teaching overseas and familiarity with IB will be highly regarded. Salaries are paid in local currency (RMB) and AISG's base salary range for certified teachers for SY2020-2021 is from 318,809 RMB (less than 3 years experience) to 478,191 RMB (top of salary scale) net, depending on years of experience and advanced degrees. Benefits include a 10% retirement allowance, professional development opportunities, paid sick leave, personal days, health insurance, life insurance, disability insurance, a tuition waiver for eligible faculty children, and maternity/paternity leave benefit. Faculty recruited from overseas also receive relocation flights to and from Guangzhou, allowances for shipping and settling in, a housing allowance, daily faculty transportation to and from school (some restrictions apply) and annual home leave.

If you would like to apply to become part of the AISG family, please go to www.aisgz.org/careers.

