



Lake Washington

School District

Facilities Advisory Committee

MEETING 2 – DECEMBER 19, 2019

Welcome and introductions

- Name
- Association with District

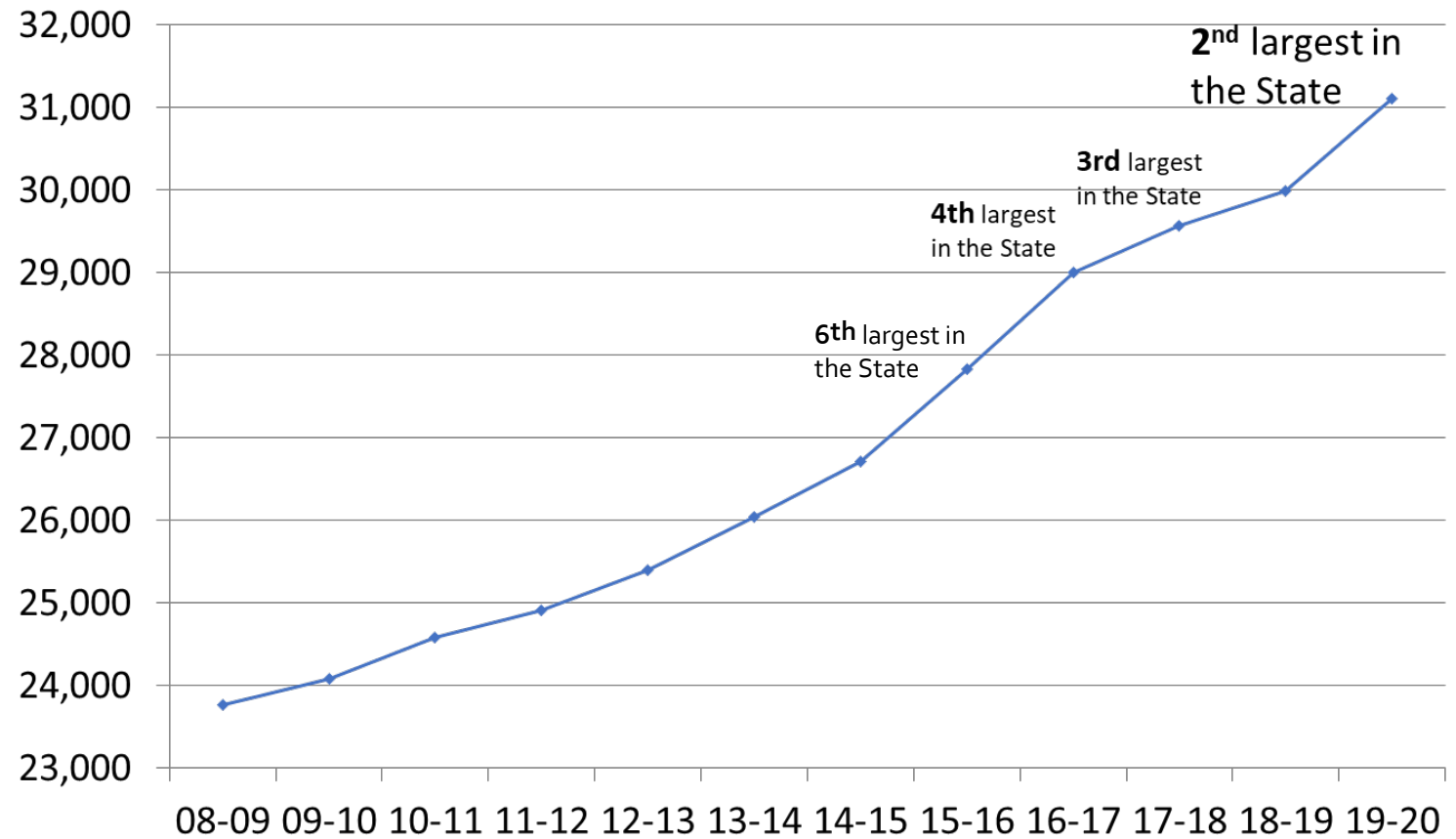


Capacity and enrollment challenges

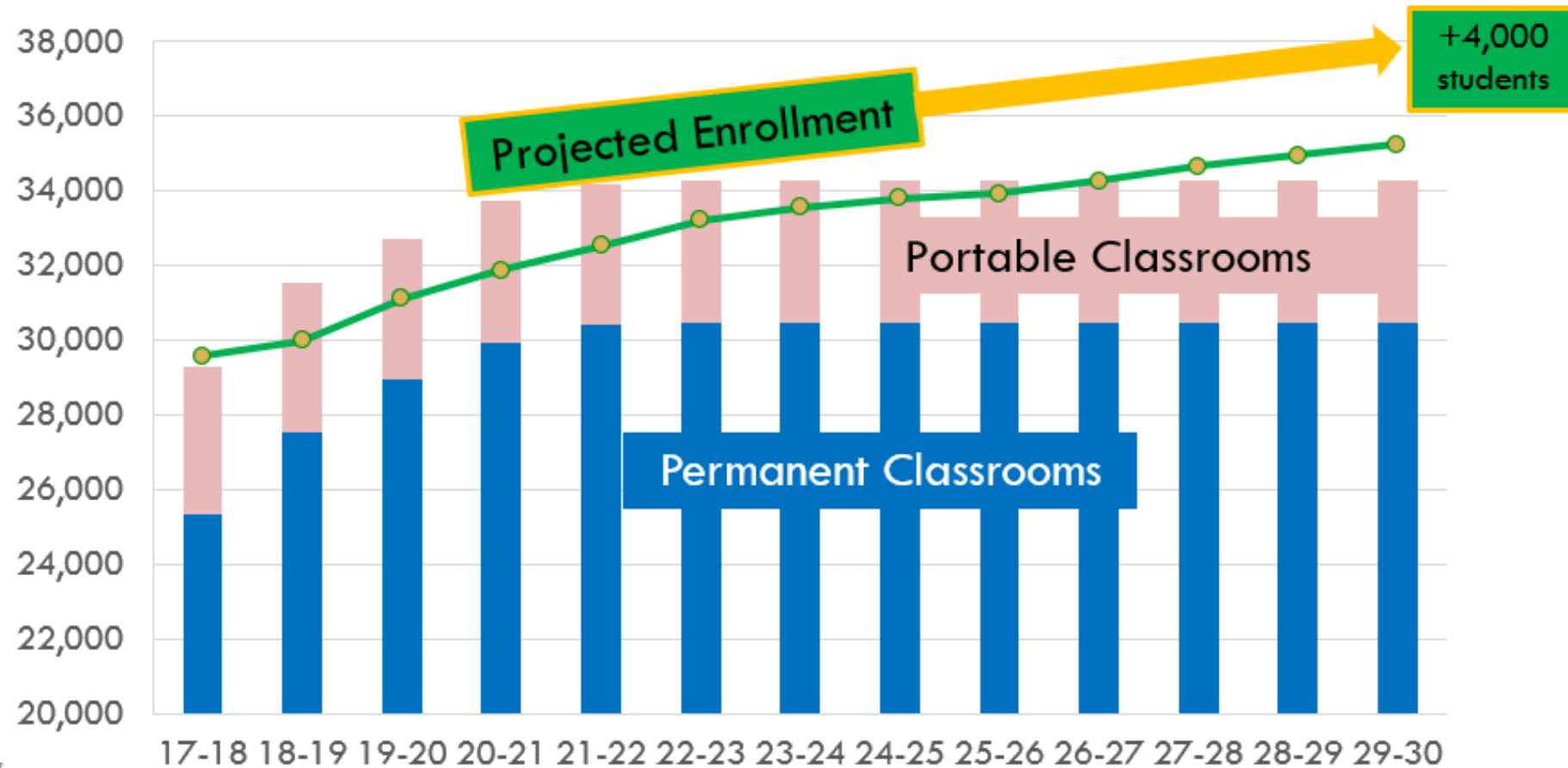


Lake Washington
has gone from the
6th largest School
District in the state
to the 2nd largest in
5 years

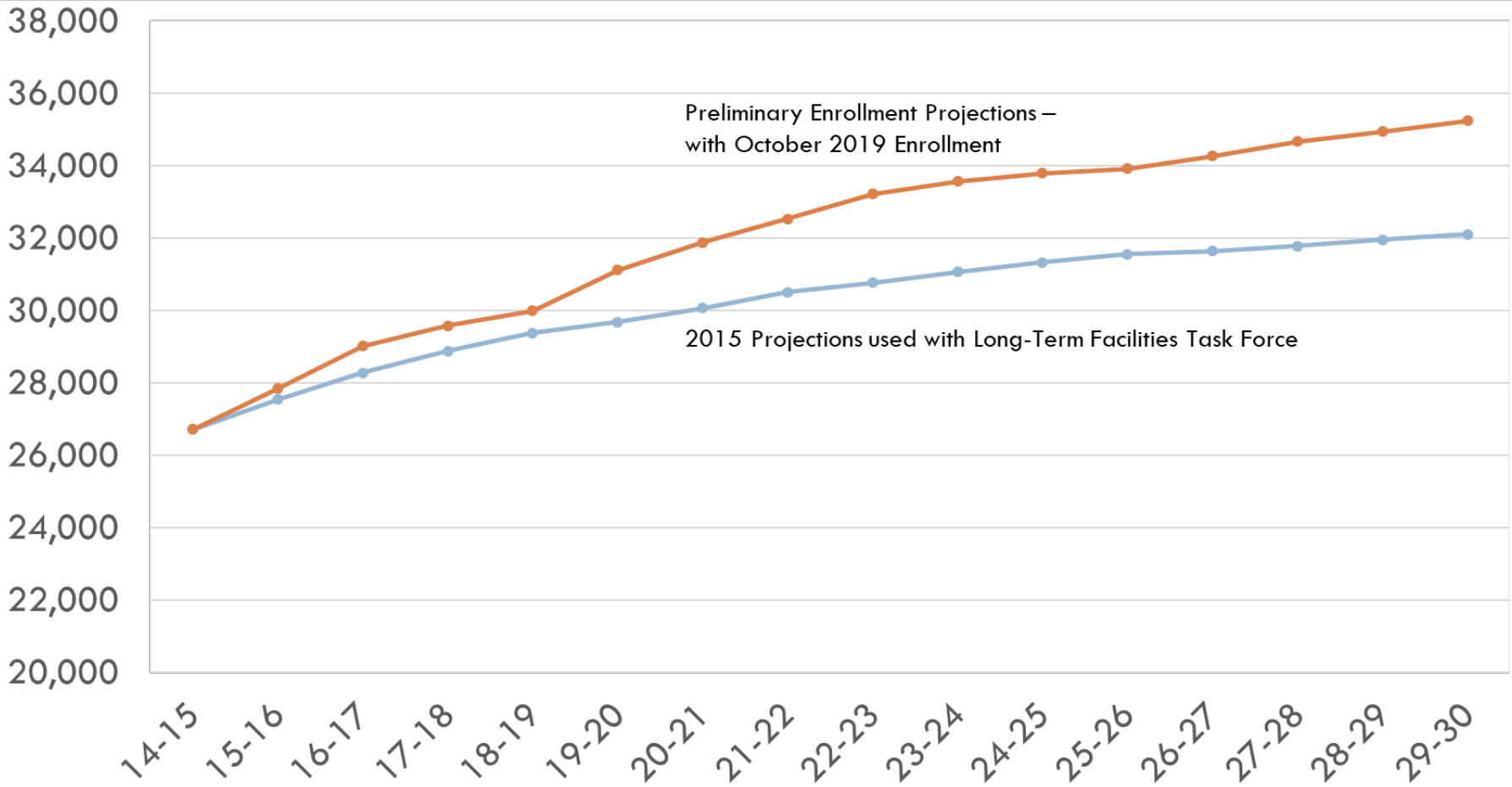
Enrollment has increased 31% since 2008



LWSD enrollment and available classroom space



LWSD Enrollment and Long-term Task Force Plan



Enrollment Projection Methodology

- ❑ King County and school district birth statistics used to project kindergarten classes
- ❑ Percent change in student enrollment between years used to project future enrollment
- ❑ Tracking of new housing developments factored into projections
 - ➔ New housing starts tracked from city and county permitting data
 - ➔ Currently tracking over 119 known developments, representing over 9,500 new units
 - ➔ Recently building housing developments tracked to determine students generated from each new home
 - ➔ Data used to project number of students expected from new housing developments
- ❑ Different Type of Projections
 - ➔ Long-Range Projections – used in Capital Facility plan and for facility Planning
 - ➔ One-Year Projections – used for budgeting purposes and staffing projections



Enrollment Projection Timelines

October	November	December	January	February	June
<ul style="list-style-type: none">• October 1 Headcount Enrollment	<ul style="list-style-type: none">• Meeting with Cities to review planned developments and comp. plan updates• Update occupancy timelines from developers	<ul style="list-style-type: none">• Determine student generation for developments from prior 5 years	<ul style="list-style-type: none">• Finalize long term-projections• Development Updates• Birth rate updates• Cohort updates• Open Closed School Decisions	<ul style="list-style-type: none">• Kindergarten Registration• Update one-year projections• Use one-year projections for preliminary staffing and budgets	<ul style="list-style-type: none">• Finalize one-year projections• Used in Next Year Draft Budget



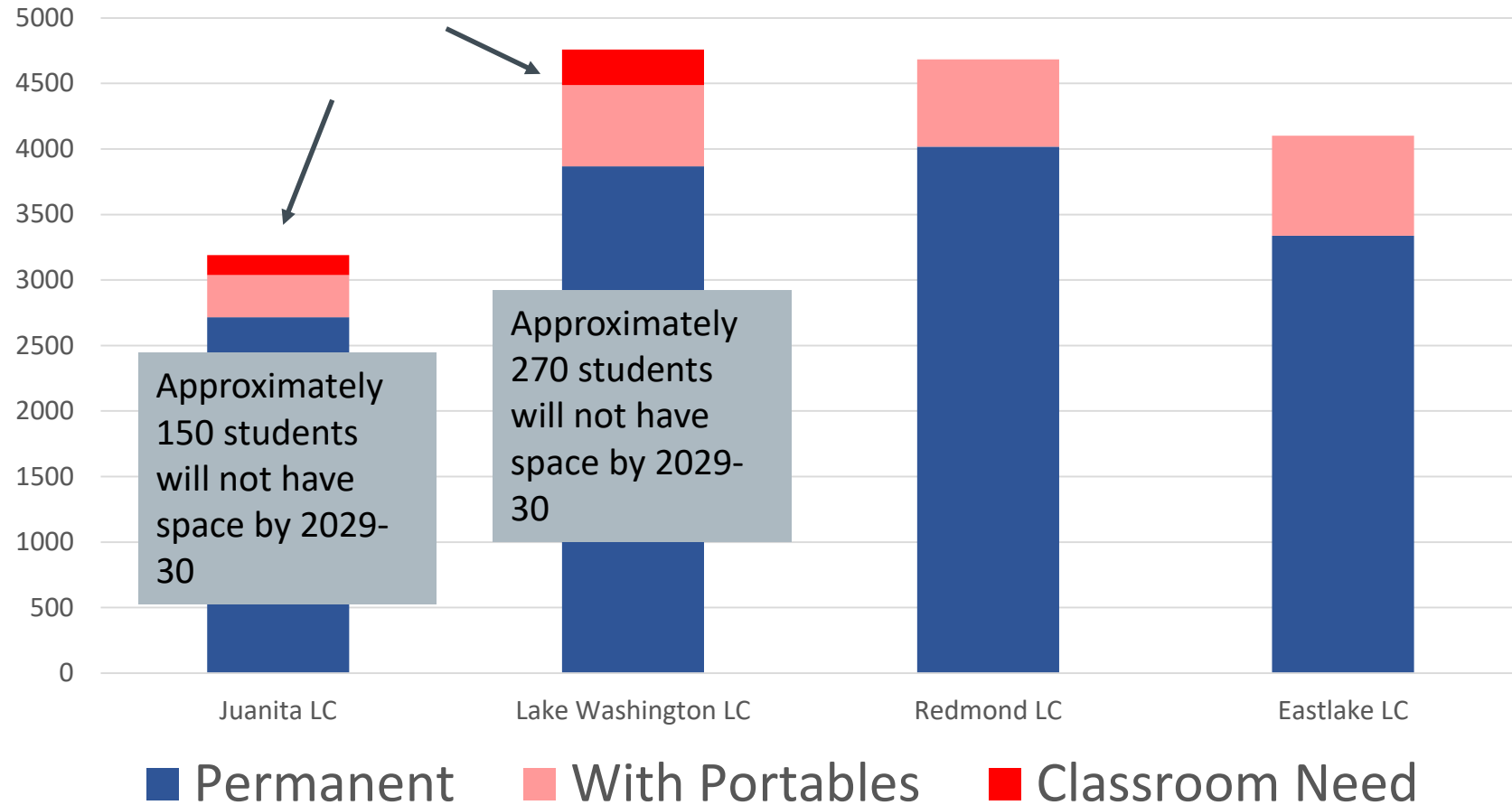
Classroom Needs Charts

- ❑ Used Projections through 2029-30.
- ❑ Capacity assumptions include:
 - ❑ Completion of 2016 bond projects
 - ❑ Completion of 2019 Capital Levy additions
 - ❑ Portable adds in the Juanita Learning area
- ❑ Assumes same level of portables.
- ❑ Handout - Details provided on Capacity Enrollment Comparison.



Classroom Needs – Elementary

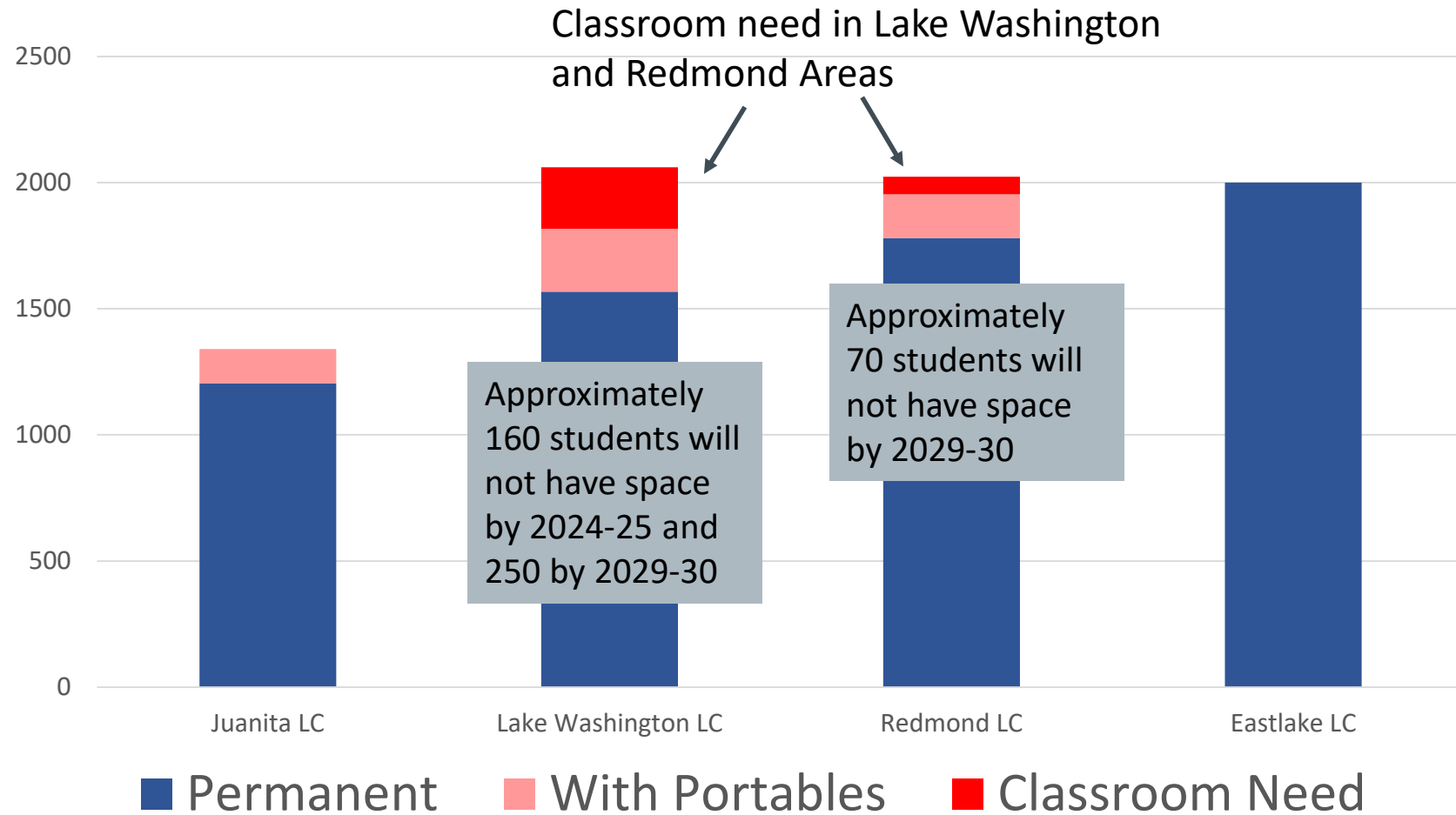
Classroom need in Juanita and Lake Washington Areas



Based on enrollment projections through 2029-30



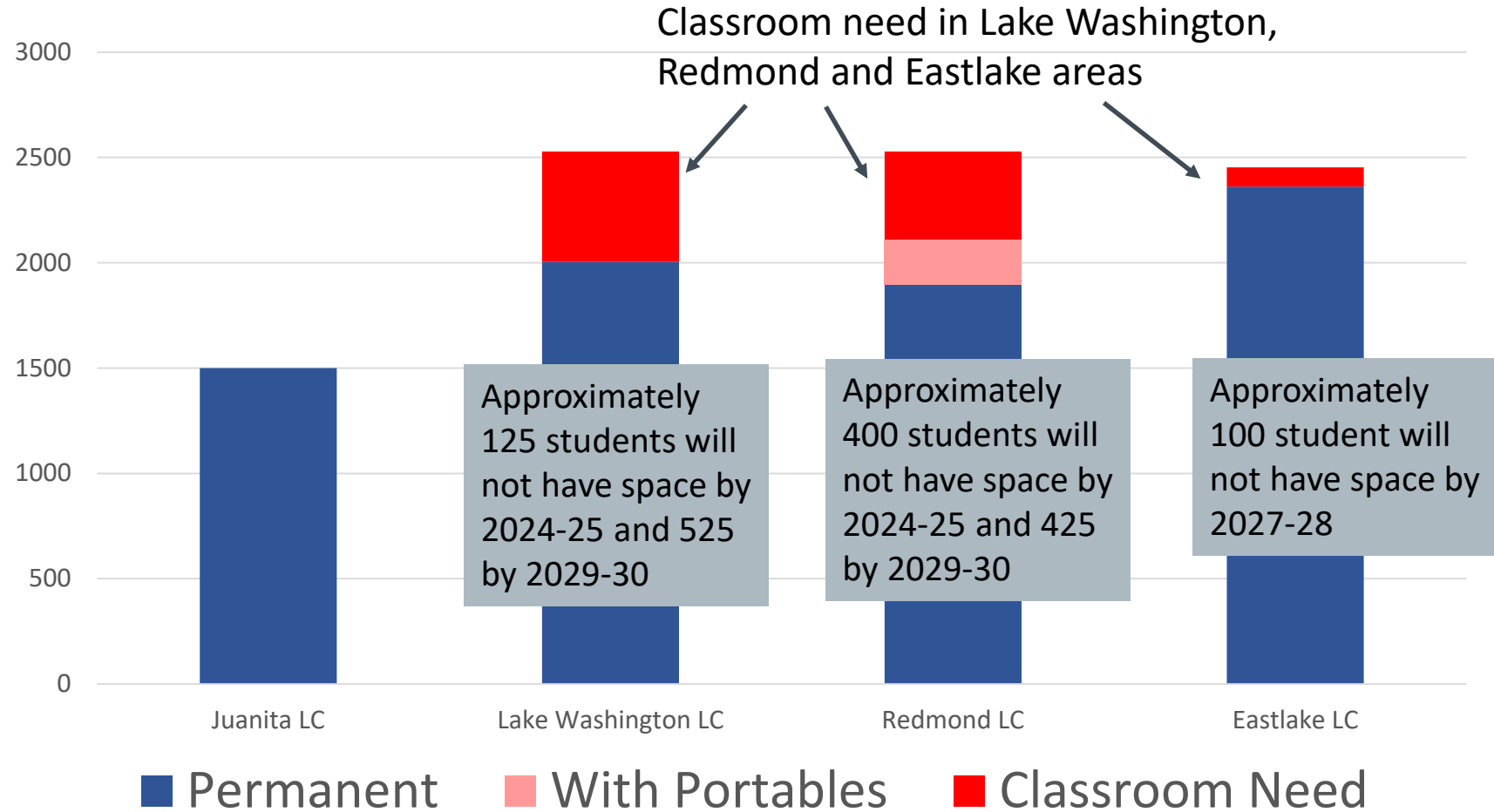
Classroom Needs – Middle School



Based on enrollment projections through 2029-30



Classroom Needs – High School



Based on enrollment projections through 2029-30



Question from last meeting – Classrooms in Shared Learning Spaces

School	No. of Classrooms	Description
Audubon Elementary	4	Converted all shared learning areas to classrooms - full walls/doors
Thoreau Elementary	1	Using 1 shared learning space for Quest pull out classroom
Rose Hill Middle School	2	Using 2 shared learning spaces
Lake Washington High School	4	Converted 4 out of 5 shared learning areas to classrooms – installed temporary wall systems to create classrooms



Question from last meeting

Analysis of Projections over time

- ❑ District long term projections are within 1-2% of actual enrollment.
- ❑ 1% margin represents about 310 students district wide or about 7 students at an elementary school or 18 students at a high school.
- ❑ These margins are very reasonable for a district of our size and given the rapid growth and development in our area.
- ❑ Handout - Summary of Capital Project Plan projections vs. Actual Enrollment.



Recommendation A

- ❑ Use worksheet content (responses) and note where some parts will come up later in process.



Building Condition Assessments



Building Conditions

- ❑ Building Condition Assessments (BCA) are performed annually as part of the State Asset Preservation Program (APP)
- ❑ Assessments performed on all permanent buildings and portables
- ❑ Assessments performed by state approved third party evaluator
- ❑ State Study and Survey is required every 6 years
- ❑ OSPI Rating System
 - ➔ Evaluates building/site systems to determine general condition
 - ➔ Unifomat – 19 major systems w/ 58 sub-categories
 - ➔ Designed so that the score will reduce over time with age (62% Fair – 30 years)



Aging Facilities

- ❑ Alcott Elementary (1986)
- ❑ Rockwell Elementary (1981)
- ❑ Smith Elementary (1988)
- ❑ Kamiakin Middle (1974)
- ❑ Evergreen Middle (1983)
- ❑ Emerson High (1983)
- ❑ Support Services/Willows (1985/1978)



Aging Facilities

- ❑ **Alcott Elementary (1986)**
- ❑ Rockwell Elementary (1981)
- ❑ Smith Elementary (1988)
- ❑ **Kamiakin Middle (1974)**
- ❑ Evergreen Middle (1983)
- ❑ Emerson High (1983)
- ❑ Support Services/Willows (1966/1978)



Aging Facilities



New/Rebuilt and Expanded Facilities

- ❑ Elementary Schools (24)
- ❑ Middle Schools (5)
- ❑ High Schools (3)



New/Rebuilt and Expanded Facilities



Building Conditions

- Recommendations A-4 and B



Portables and Property



Portables

- ❑ Currently have 160 portables across the district
- ❑ Will be adding 10 more to Juanita Elementary schools by Fall 2020
- ❑ District changed portable standard to “Green portables” in 2014
- ❑ Portable age range from 1986 to 2018.



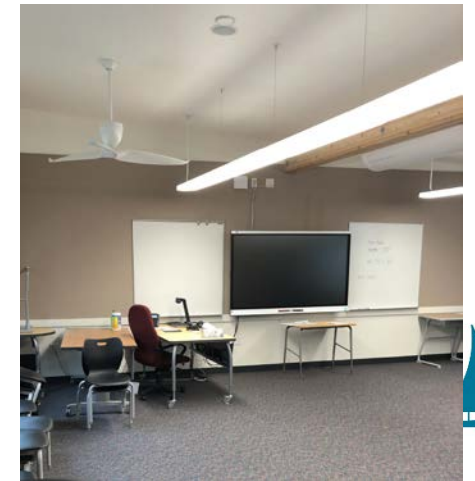
Aging Portables

- ❑ 30 years and older: 59 portables
- ❑ 20-29 years old: 7 portables
- ❑ 10-19 years old: 29 portables
- ❑ 6-9 years old: 25 portables



Updated Standard - Green Portables

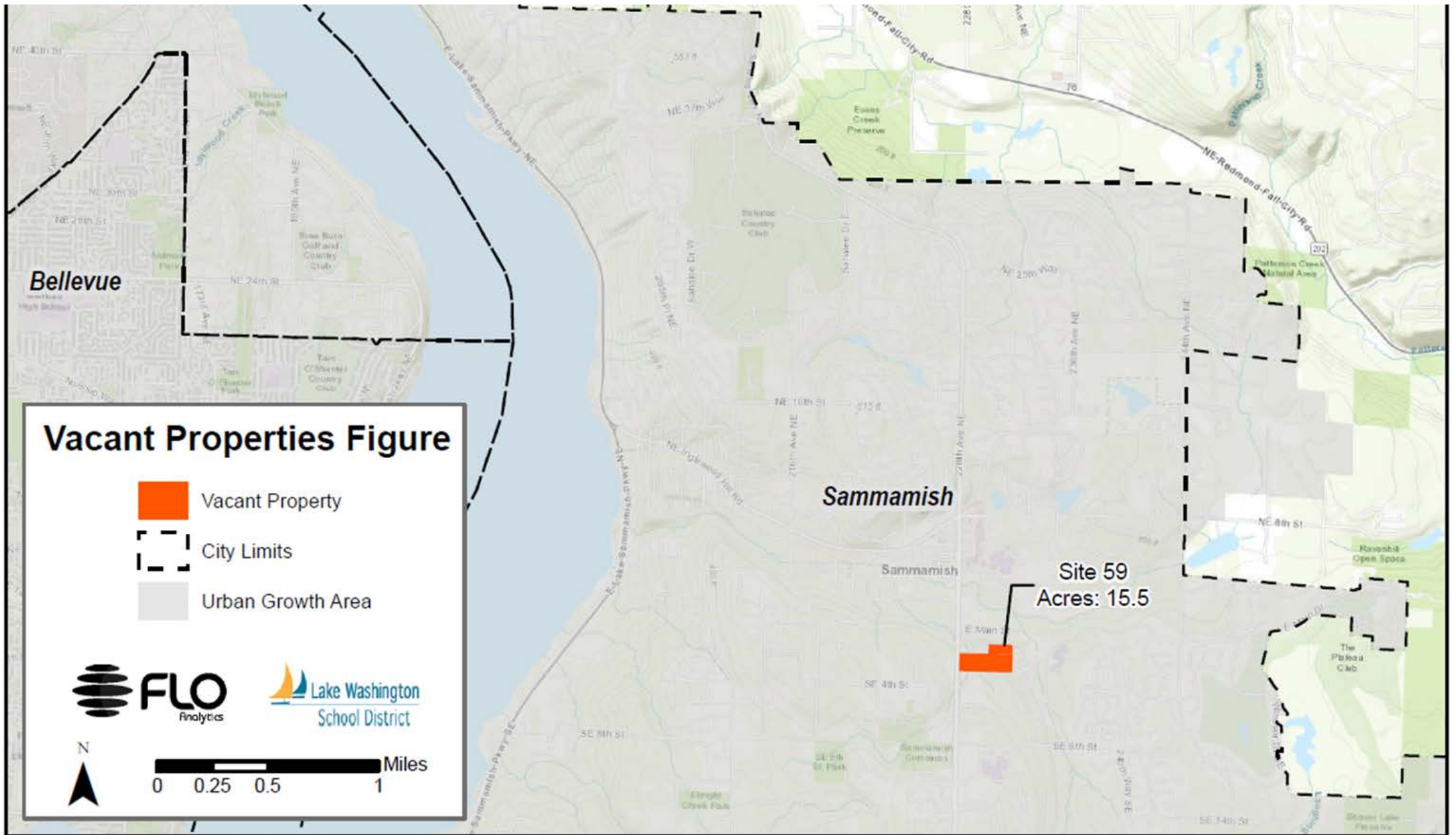
- ❑ 40 portables added between 2015 and 2018
- ❑ 10 additional planned for Juanita area Fall 2020



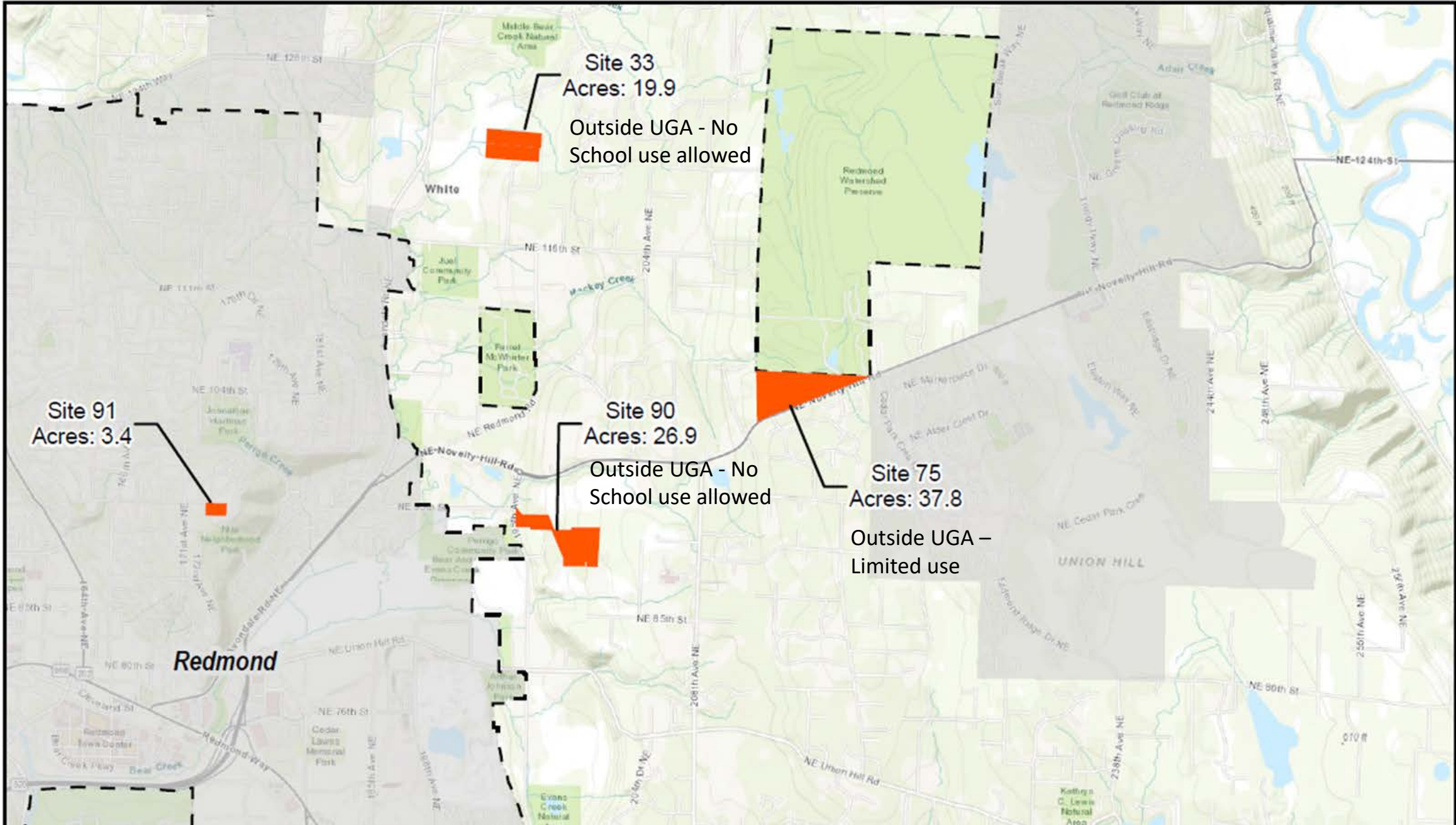
Property Inventory

- ❑ Handout - Undeveloped and Underdeveloped Property.
- ❑ District owned vacant property impacted by King County Urban Growth Area (UGA) Decision.
 - ➔ 1994 limited development outside urban growth boundary line
 - ➔ Current schools can be rebuilt, but limited what vacant property can be developed
 - ➔ King County School Siting Task Force adopted recommendations for district owned land outside the UGA in 2012
- ❑ Some district property with schools have capacity for additional program space.





Vacant Property - Sammamish Area



Vacant Property - Redmond Area – limited use outside UGA

Review of Recommendations

- ❑ Recommendation A-4, B and G



Recommendations Discussion



Recommendations Discussion

- Recommendation A
- Recommendation B
- Recommendation G



Wrap up and action items



Next meetings

☐ Topics:

- ➔ FloAnalytics capacity and enrollment
- ➔ Presentation by building administrators about how school facilities contribute to student experience
- ➔ Effects of growth on staff support needs

☐ Next meeting

- ➔ January 16, 2020, 4:30 – 6:30 p.m. at Timberline Middle School

