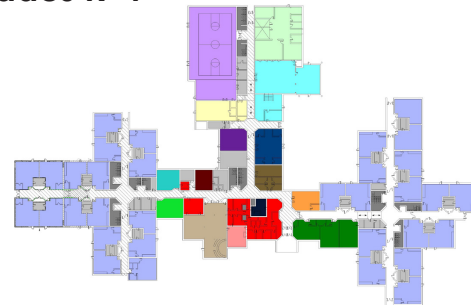


OPTION 8

ACTION

CONSTRUCT A NEW ELEMENTARY SCHOOL

Serving 640 students grades K-4



ELEMENTARY SCHOOLS

Change all to grades K-4



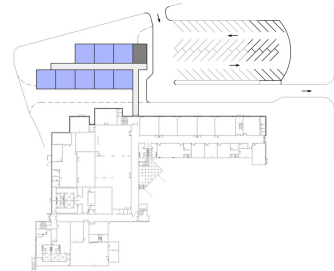
INTERMEDIATE SCHOOLS

Change all to grades 5-7



MARYVILLE JUNIOR HIGH SCHOOL

Build an 8 classroom addition — adding 200 students @ 25 students per classroom



MARYVILLE HIGH SCHOOL

Change to College Model



RESULTS

ELEMENTARY 15+

- Capacity increases to 2,400 students @ 20 students/room
- OK until at least 2034-35 school year (at least 15 years)

INTERMEDIATE 15+

- Capacity remains at 1,700 students.
- OK until at least 2034-35 school year (at least 15 years)

JR HIGH 15+

- Capacity increases to 1,075 students
- OK until at least 2034-35 school year (at least 15 years)

HIGH 15+

- Capacity increases to 1550 students
- OK until at least 2034-35 school year (at least 15 years)

ESTIMATED CONSTRUCTION COSTS

(In 2019 dollars - assume 5% cost escalation factor per year)

\$18 million for new 640 student Elementary School

\$3 million for Maryville Junior High addition

\$0.25 million to change High to College Model

\$21.25 million TOTAL

	ELEMENTARY						INTERMEDIATE				JUNIOR HIGH			HIGH				K-12	Avg./Grade
	K	1	2	3	4	Total	5	6	7	Total	8	9	Total	10	11	12	Total		
2020-21	411	400	427	439	436	2113	415	394	454	1263	420	429	849	423	388	366	1177	5401	415
2021-22	413	407	419	435	460	2133	444	424	407	1275	459	421	880	425	409	376	1210	5497	423
2022-23	415	409	426	426	455	2131	469	454	437	1360	411	459	870	417	411	397	1225	5586	430
2023-24	417	411	428	434	446	2136	464	478	468	1411	442	411	853	455	403	399	1257	5657	435
2024-25	419	413	430	436	454	2152	455	474	494	1423	473	442	915	408	440	392	1239	5729	441
2025-26	421	415	432	438	456	2162	463	465	489	1417	499	474	972	438	394	427	1260	5811	447
2026-27	423	417	434	440	459	2173	465	473	480	1418	494	500	994	469	424	383	1276	5860	451
2027-28	425	419	436	442	461	2183	468	475	488	1431	484	495	979	495	454	411	1360	5953	458
2028-29	427	421	438	444	463	2193	470	477	490	1438	493	485	978	490	479	441	1409	6018	463
2029-30	429	423	440	446	465	2204	472	480	493	1444	495	494	989	481	474	465	1420	6057	466
2030-31	431	425	442	448	467	2214	474	482	495	1451	498	496	994	489	465	460	1414	6073	467
2031-32	433	427	445	450	470	2224	477	484	497	1458	500	498	998	491	473	451	1416	6097	469
2032-33	435	429	447	453	472	2235	479	487	500	1465	502	501	1003	494	475	459	1428	6132	472
2033-34	437	431	449	455	474	2245	481	489	502	1472	505	503	1008	496	478	461	1435	6161	474
2034-35	439	433	451	457	476	2256	483	491	504	1479	507	506	1013	499	480	464	1442	6190	476
Building Capacity Range	2400-2640						1700-1904				1075-1204			1550-1736					
Bldg Utilization (preferred) '20-'35	88%-94%						73%-87%				79%-94%			76%-93%					