

# El Morro Elementary School Principal's Report

September 27, 2016

# New Staff Members at El Morro

Elementary School Counselor - Marianne Lawson

Science Specialist - Kathleen Margaretich

Principal's Administrative Assistant - Kathy Miranda





# Enrollment

**El Morro currently has 530 students.  
We ended last year with 556 students**

TK = 25

3rd = 93

K = 58

4th = 92

1st = 79

5th = 108

2nd = 75

**46 new students enrolled this year. Most are from Anneliese. We also have students from Chile, China, Russia, and Mexico.**

# Meaningful Relationships and The Growth Mindset

El Morro School Goals for the 2016-17  
School Year

[illegible]

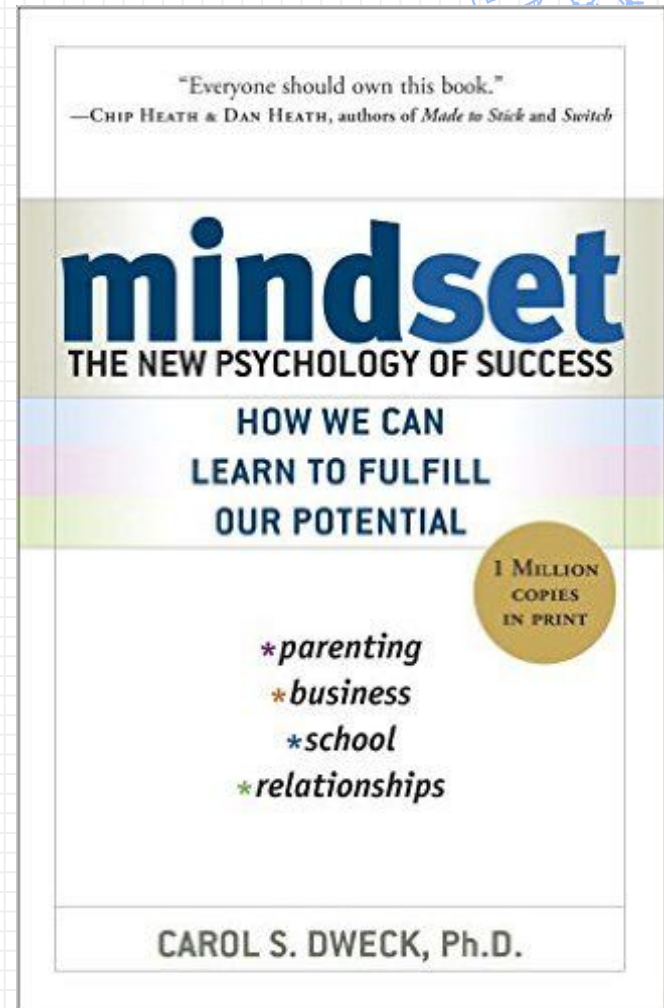
**"No significant learning occurs without a  
significant relationship."**

Dr. James Comer

# Dr. Carol Dweck



Professor of Psychology  
Stanford University  
Research Validated Strategies  
Fits in nicely with Social Emotional  
curriculum



# FIXED MINDSET VS. GROWTH MINDSET

**STOP SAYING, "YOU ARE SO SMART!"**

Start saying.....

Resource for Praise the process not the person: handout





The Power of

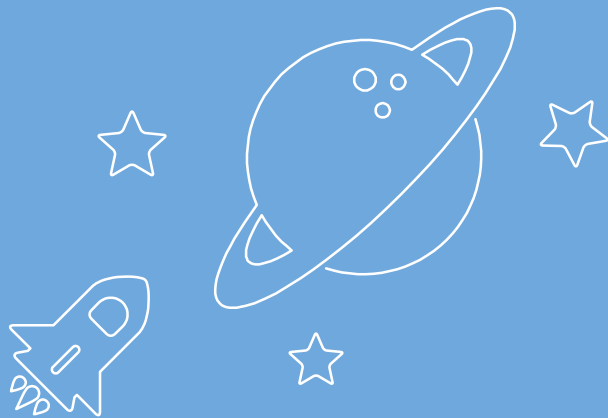
...YET



## Facilities Update and Projects

- ▶ Science Lab
- ▶ Shade Structure
- ▶ Office Re-design

Work on the Science Lab and office are on going, the shade structure is complete.



# Science Lab

The new science lab and instruction are exceeding my expectations and off to an excellent start!



Science Lab

# Shade Structure



A vertical blue sidebar on the left side of the slide, featuring a repeating pattern of white office-related icons. These icons include a document, a pie chart, an envelope, a clock, a speech bubble, a checkmark, a tag, and a smartphone.

## Office Environment

More space to move  
through office

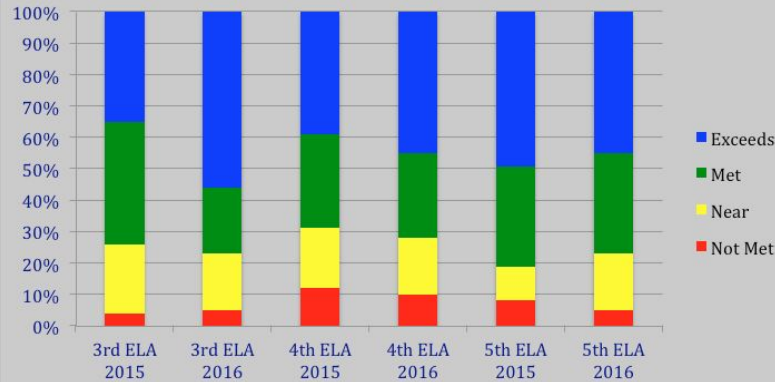
Create a  
Professional  
environment

Comfortable seating  
for student and  
parent visitors

More file storage

Current furniture is  
over 10 years old

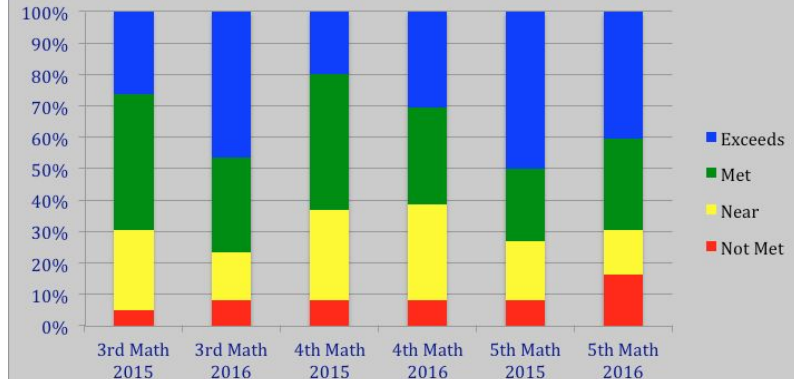
### CAASPP EMS ELA



- Significant gains in 3rd grade ELA, from 35% exceeds Standards to 56% exceeds standards
- 4th grade “met” writing claim increased by 8% and research increased by 12%
- Percentage of 5th grade students not meeting ELA standards dropped from 8% to 5%

- Significant gains in 3rd grade Math, from 26% exceeds Standards to 46% exceeds standards
- 4th grade “met” Problem Solving claim increased by 6% and reasoning increased by 11%
- 5th Grade cohort math met or exceeded increased by 6%

### CAASPP EMS Math









# THANKS!

You can find me at

- ▶ @ChrisDuddyLB on Twitter
- ▶ [cduddy@lbusd.org](mailto:cduddy@lbusd.org)

**Any questions?**