

Educational Programs & Operations Replacement Levy



Please Vote by February 11, 2020

Did you know?

Like most school districts in Washington State, PSD must rely on local residents to support essential programs through an Educational Programs & Operations Replacement Levy.

State and federal dollars do not fully fund the day-to-day operations of the District.

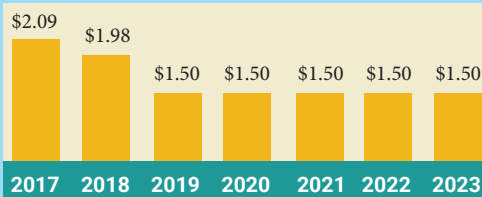
Peninsula School District will continue to have the lowest overall tax rate in Pierce County.
This is not a new tax.

“ Sometimes people confuse the operating levy with the capital bond. The replacement levy funds a variety of ongoing, valuable programs, while our capital bond is funding the construction of four new schools. It is important for our community to understand that the approval of the bond did not replace the expiring levy. ”

Dr. Art Jarvis
Superintendent

Annual Levy Tax Rates

(historical & estimated)

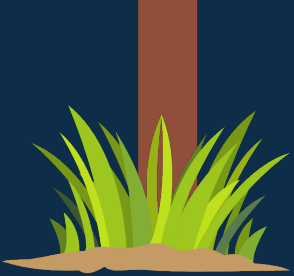


Approval of the replacement levy would assess an estimated \$1.50 or less per \$1,000 of assessed property value.

**Levies are for
LEARNING
Bonds are for
BUILDING**

VOTE
FEB 11, 2020

Peninsula School District Educational Programs & Operations Replacement Levy



This replacement levy will provide funding to continue important programs, operations and support.

The Peninsula School District will ask voters to approve a three-year **Educational Programs & Operations Replacement Levy** to replace an expiring levy approved by voters in 2016.

Teachers & Support Staff

Examples include staff to keep class sizes low per state mandates, teachers, para-educators, custodians, nurses and counselors.



Music, Athletics & Art

Examples include music, performing arts, athletics, clubs and extra-curricular transportation.



Educational Programs

Examples include highly capable programs, advanced placement and special education for students who need extra help.



Preventative Maintenance

Examples are exterior and interior painting, HVAC support and routine repairs.

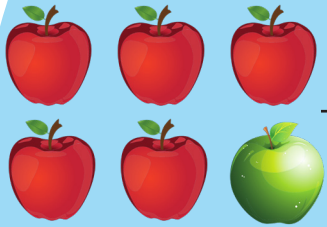


Safety & Security

Examples are security cameras, secure entrances at schools, security officers, and emergency preparedness.



The levy is 18% of the General Fund that supports day-to-day operations & educational programs.



One out of every six General Fund dollars are levy dollars.

72% of the levy pays for staff & staff training.

28% pays for books, curriculum, technology devices, school resource officers & district vehicles.

