

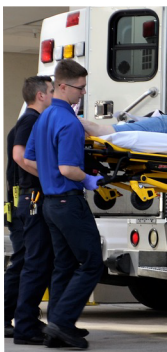


# HEALTH SCIENCE PATHWAY

## WHERE TO START

# INTRODUCTION TO HEALTH SCIENCE

**FULFILLS**  
HEALTH EDUCATION  
graduation  
requirement



### 8337 Intro to Health Science

This year-long course is designed to create an awareness of career possibilities in health care and inform students of the educational options available for health science.

#### INSTRUCTION INCLUDES:

- Beginning Anatomy & Physiology
- Medical Terminology
- Medical Careers
- Diseases and Disorders

### Recommendation

This course is recommended for students who are interested in having a career in the medical field. It will prepare students for the following courses:

- Medical Anatomy and Physiology
- Sports Medicine
- Emergency Medical Response
- Certified Nurse Assistant
- Biotechnology
- Advanced Health Science