

Student Connectedness

Laguna Beach Unified School District
Presentation to the Board
February 14, 2017

Jenny Salberg
Maximillian O Connor
Alysia Odipo, Ed.D.

Outcomes

Why Does Student Connectedness Matter?

What Does the Data Say?

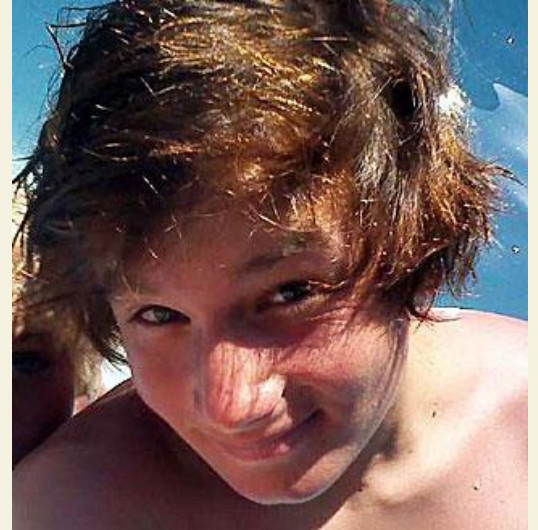
What do Students Say about their Experiences in LBUSD?

School Connectedness: A Glimpse into the Wealth of Opportunities for our Students

LCAP Goal 4

Safe, attractive, clean, well-equipped learning environments for all students that promote critical thinking, collaboration, creativity, and communication

Seth's Law



- ◉ Adopt a strong anti-bullying policy that specifically outlines anti-bullying practices, including sexual orientation and gender identity and gender identity/gender expression
- ◉ Adopt a specific process for receiving and investigating complaints of bullying, including a requirement that school personnel intervene if they witness bullying.
- ◉ Publicize the anti-bullying policy and complaint process, including posting the policy in all schools and offices
- ◉ Post on the district website materials to support victims of bullying

Three Elements of Bullying

Unwanted Aggressive Behavior

Observed or Perceived Power Imbalance

Repetition of Behaviors or Likelihood of Repetition

Leading Reasons for Bullying

Race or national origin

Peer perception that student was gay or lesbian

Impact of Bullying on Youth

Feelings of low-self esteem and isolation

Perform poorly in school

Difficulty with friendships

Negative View of School

Report Psychosomatic and Mental Health Problems

One in Five

School Age Students in US Reports Being Bullied in
Past Year

[CDC , 2014](#)



Positive School Climate Matters.

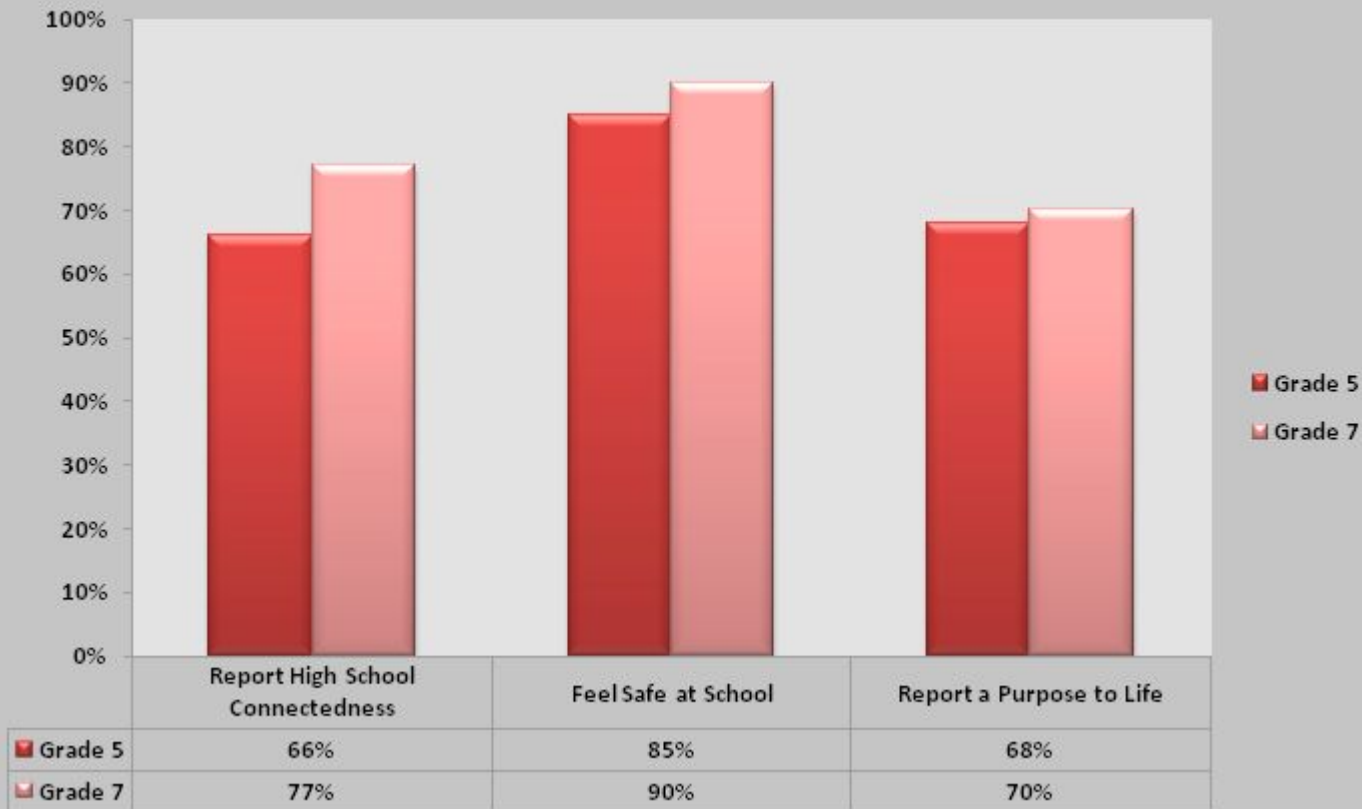
“a positive school climate includes caring relationships between teachers and students, physical and emotional safety, and academic and emotional supports that help students succeed – the opposite of a school culture where bullying is ignored.”

WestEd

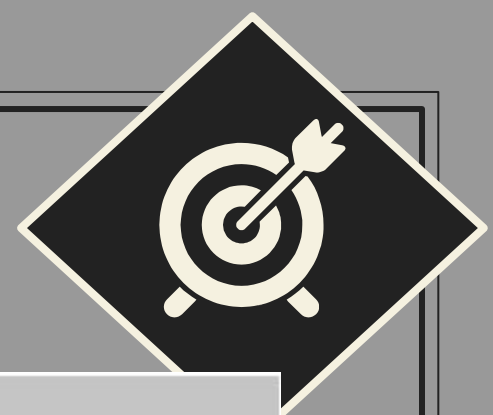
LBUSD CHKS



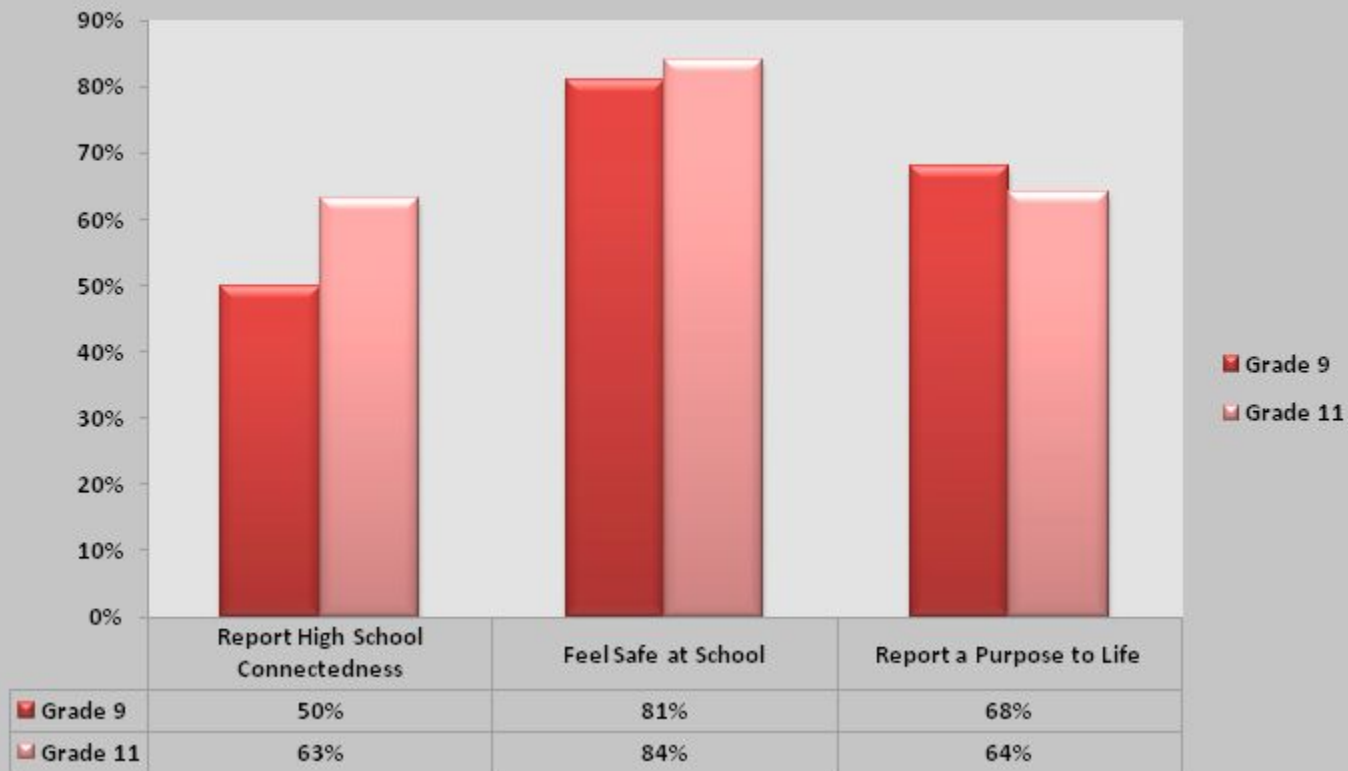
Grades 5 and 7



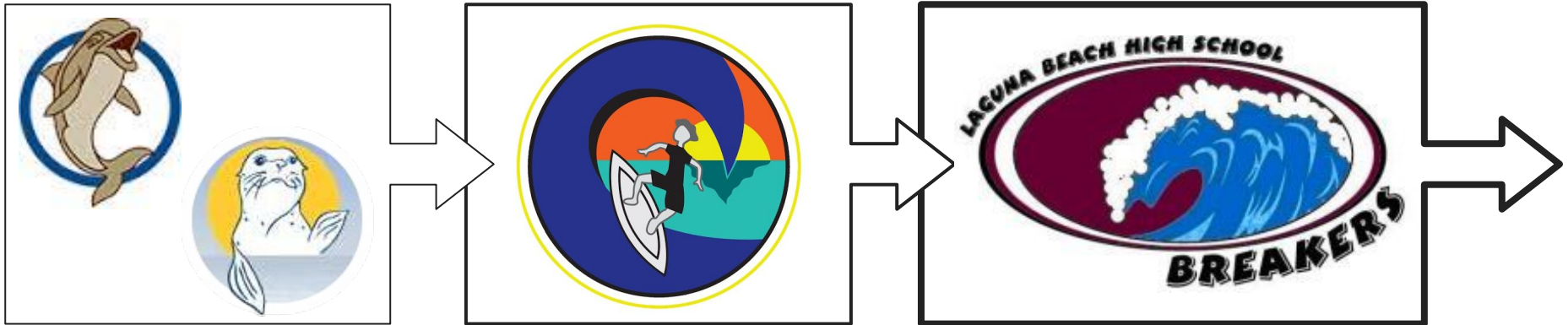
LBUSD CHKS



Grades 9 and 11



LBUSD is Connected



Strategic Goal: School Culture/LCAP Goal Four

Each student will strengthen connections to the school, community, and the world by engaging in activities that build skills and responsibility.

Thurston Middle School: SMART



In 2014 81% of our 7th graders reported they
“feel safe at school”

In 2016 90% of our 7th graders reported they
“feel safe at school”

Thurston Fits Like a Puzzle

2014: 69% reported high levels of school connectedness
2016: 77% reported high levels of school connectedness



2014: 36% reported any harassment or bullying
2016: 28% reported any harassment or bullying

Thurston CHKS



School Climate Subscale Results

	SCI Scores			
	2014	2015	2016	Change
Overall Supports and Engagement	368	ND	412	+44
High expectations and caring relationships	335	ND	351	+16
Opportunities for meaningful participation	361	ND	396	+35
Perceived school safety	383	ND	422	+39
School connectedness	359	ND	408	+49
Overall Low Violence and Substance Use	373	ND	456	+83
Low physical violence perpetration	374	ND	458	+84
Low physical/emotional violence victimization	368	ND	457	+89
Low harassment and bullying	372	ND	454	+82
Low substance use at school	379	ND	452	+73

Upcoming LCAP Opportunities

- February 6: Curriculum Council
- February 15: DELAC
- Feb-March: SSC and ELAC Meetings
- March 17: LCAP Advisory Council
- April 13: DELAC
- May 23: LCAP Board Study Session #2
- June 13: LCAP Public Hearing
- June 27: Approval of LCAP

And....PTA and Board Meetings

Any Questions?

