

Road to the 2020 Census

Engaging our Students and Families



Raymond "Ray" Mueller
Partnership Specialist
U.S. Census Bureau

Why we do Census? It's in the Constitution

Article 1, Section 2 of the U.S.
Constitution

The actual Enumeration shall be made within three Years after the first Meeting of the Congress of the United States, and within every subsequent Term of ten Years, in such Manner as they shall by Law direct

It's about Power, Justice, & Money

After each census, state officials use the results to redraw the boundaries of their congressional and state legislative districts adapting to population shifts. And to determine use of over \$675 Billion in Federal Funds

What is Census Data

Alum Rock CDP, California

People and Population

Race and Ethnicity

Health

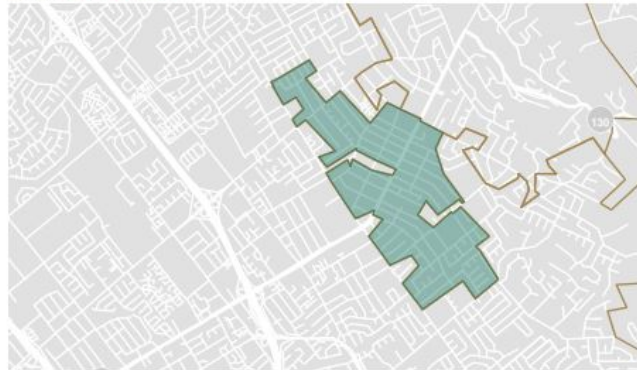
Education

Employment

Income and Poverty

Alum Rock CDP, California

Place in California



Alum Rock CDP, California is a city, town, place equivalent (CDP), or township located in California. Alum Rock CDP, California has a total area of 0.8 square miles.



POPULATION

12,128



MEDIAN HOUSEHOLD INCOME

\$79,889



POVERTY RATE

9.3%



EMPLOYMENT RATE

61.5%

[Data.census.gov](https://data.census.gov)

All data is confidential

- The Census is Confidential and required by Law *
- Results of the Census are reported in Statistical format only
- We do not share a respondents personal information with other government agencies
- All Census Employees swear to a lifetime oath to protect respondent information
- Penalties for wrongful disclosure - Up to 5 years imprisonment and or a fine of \$250,000

* Title 13 protects, the Constitution requires

Languages – Supporting Linguistically Diverse Populations

Available in Spanish

- Enumerator Instruments (handheld)
- Paper questionnaire and other mailings
- Field enumeration materials

Internet option and Census Questionnaire Assistance (CQAs) will be available in 12 non-English languages

Spanish, Chinese (simplified), Vietnamese, Korean, Russian, Arabic, Tagalog, Polish, French, Haitian Creole, Portuguese, Japanese

More Items available in 59 non-English languages

- Language glossary
- Language identification card

2020 will be easier than ever

First time you can self respond by Internet
starting March 12, 2020

- Internet
- Phone
- Paper Form



Or traditional in person interview

Focus on Hard to Count Populations

- Veterans
- Homeless
- Children under 5
- Senior Citizens
- People with disabilities
- Renters
- Foreign Born/Immigrant Population
- Farm workers/Migrant Workers
- Native Hawaiian and Other Pacific Islander
- Refugees
- Limited English Proficiency

Local Partnership Strategies

- Complete Count Committees
- Community/Non-Profits/Social Service Organizations Outreach
- Faith-Based Community Outreach
- Foreign-Born/Immigrant Program
- **Statistics in Schools**
- Media
- Mobile Response Table
- Trusted Voices
- Thank You Campaign

Statistics in Schools

Statistics in Schools (SIS) is a U.S. Census Bureau program that uses census statistics to create classroom materials for grades pre-K through 12. Created by teachers for teachers.

How does the use of SIS impact school funding?

Using new SIS materials, you can educate students & adults in their home on the importance of counting everyone in the 2020 Census. Census responses drive decisions on over **\$675 billion** in federal funds which includes support for school programs and services such as these:

- Special education
- Free and reduced-price lunch
- Class size reduction
- Classroom technology

- Teacher training
- After-school programs

F.A.Q. for S.I.S.

For what subjects and grade levels can I use SIS?

SIS activities are provided for pre-K through 12th grade, for math, English, history, geography, sociology, and more.

Are these activities compatible with my state standards?

Yes. All of the activities include recommendations on how to align them with your state standards.

How do I access SIS materials and resources?

It's easy and free, and it doesn't require any registration. Just go to [census.gov/schools](https://www.census.gov/schools), select the activities and resources that you want, and access or download them on the spot.

Are SIS materials available in Spanish?

Yes. Resources like worksheets, maps, storybooks, and more are available in Spanish.

S.I.S. Samples

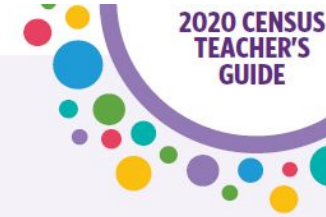
Student and Teacher versions available for easy download



Diversity: Differences in Communities

- Using **Activity Item: Demographics Across the U.S.**, work with a partner to fill in the percentage of people in each category in the table below.

State	American Indian and Alaska Native	Speak a language other than English at home	Bachelor's degree or higher
My State _____			
South Dakota			



Diversity: Differences in Communities

Topic(s):

Analyzing data, diversity, race, ethnicity, language, decennial census

Grade Level:

3-4

Approx. Time Required:

30 minutes

Learning Objectives:

Students will be able to:

- Use a problem-solving model to analyze data.
- Interpret information presented in a data table, and draw conclusions based on that data.
- Communicate mathematical ideas using various representations.
- Understand and provide examples of how their community is diverse.
- Make comparisons between different sets of data.
- Understand why it is important to get an accurate count in the 2020 Census.

Introduction

The 2020 Census Statistics in Schools (SIS) program is designed to educate students about the decennial census and to teach them educational concepts and skills, such as data literacy, through use of census data in the classroom. Responding to the census helps your community get its fair share of funding. Census data guides how more than \$675 billion in federal funding is distributed to states and communities each year. These funds support vital community programs that help children, such as schools, hospitals, housing, and food assistance. By educating students about the 2020 Census, you can help encourage a complete count.

<https://www.census.gov/schools/>

Recruiting Information

- Online application
- Competitive pay rates (\$30-\$33/ hour)
- Qualifications
 - ✓ U.S. Citizen
 - ✓ Pass a background check
 - ✓ Supervisory and/or management experience for management positions
 - ✓ Veteran's Preference

www.2020census.gov/jobs

Next Steps

- **Pass a resolution in support of a complete count in your community.**
- **Use the Statistics in Schools curriculum drop-ins created by teachers for teachers!**
- **Include information on the safety, ease and importance of the Census and recruiting info in messaging to students, families, staff and community.**
- **Invite our staff to visit your staff meetings to discuss Census.**

Contact Information

Raymond “Ray” Mueller

U. S. Census Bureau Partnership Specialist

Raymond.C.Mueller@2020census.gov

818-983-2995

Santa Clara County – Education Lead

Northern California

Los Angeles Regional Census Center 555 W.

5th St, 30th Floor

Los Angeles California, 90013