



ASH at a Glance

1867 Founded in New Orleans

Catholic school, all girls

Grades: Age 1 - Grade 12

Current enrollment **744**

Student/faculty ratio: **6:1**

12  Average Class Size

48% of our faculty have a masters degree or higher

Athletic Teams:

10 Varsity Teams

4 Junior Varsity Teams

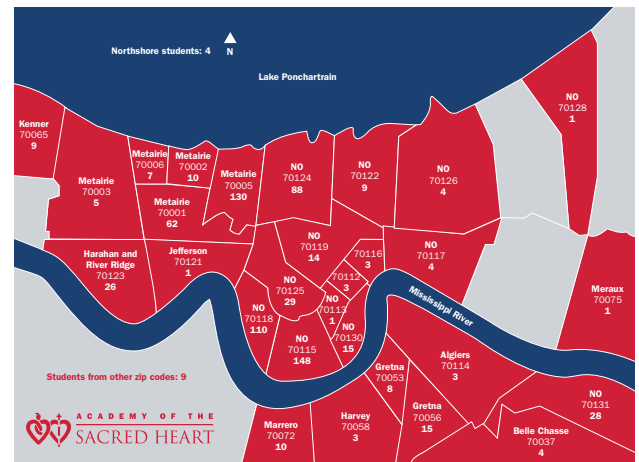
12 Middle School Teams

1 Middle School Clinic



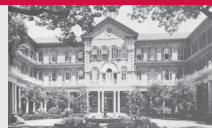

100%
College Acceptance Rate
in the last 5 years

Sacred Heart girls attended schools that span the country from Penn, Notre Dame, Villanova and Virginia to TCU, Colorado, Cal Berkeley and USC.



Sacred Heart girls come from all over the Greater NOLA area – such as Mandeville, Destrehan, Belle Chasse, Chalmette and LaPlace.

Brief History



- The Society of the Sacred Heart opened its New Orleans' school, *Mater Admirabilis*, in 1867 in the French Quarter.
- In 1887, the school opened a second location on St. Charles Avenue nicknamed *the Rosary*.
- Throughout the years, the school expanded many times, both vertically and horizontally.
- In 2002, the school acquired a second presence on St. Charles Avenue, *the Mater Campus*, home to all Lower School and our Little Hearts divisions.
- More recently, renovations include a new Innovation Lab & Makerspace, a Performing & Fine Arts Center, a new library wing, and an Outdoor Athletics Complex that features a six-hole putting green.
- Sacred Heart is a harmonious blending of the old with the new and is a registered New Orleans landmark.