

BIOLOGY

Head of department: Mr P J Heath

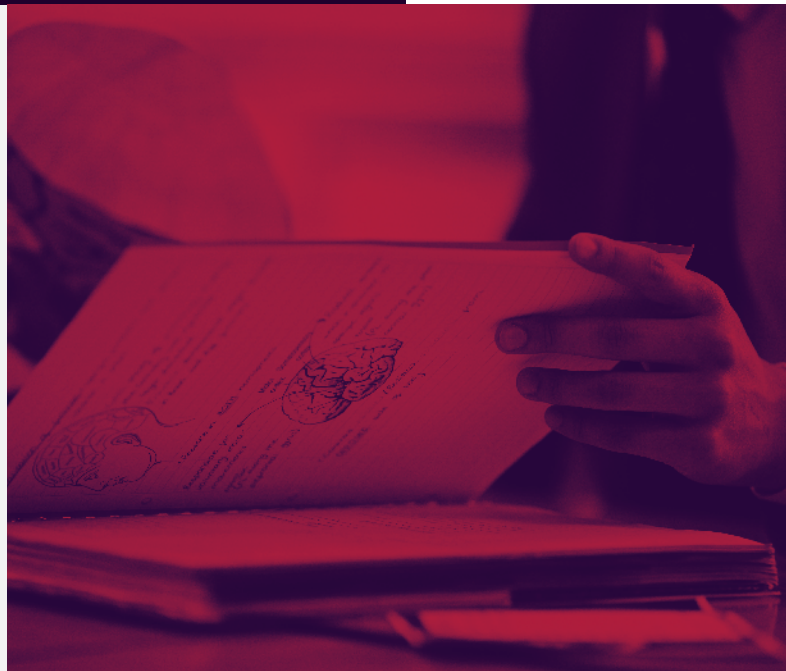
Examination board: Pearson/Edexcel 9BIO



RGS



*“The Biology A Level involves a lot of **experimental** work, and you’ll need good problem solving skills, as well as the ability to think **logically**. If this is the sort of thing that you enjoy, and you also have the ability to explain complex ideas clearly, then Biology may be the right subject for you. It is a good idea to study Biology with Chemistry if you are considering a biology related degree at university.”*



PROGRAMME OF STUDY

The course has a strong human biology theme but a variety of topics are covered. These include physiology, ethology, molecular biology, biochemistry, genetics, gene technology, ecology and evolutionary biology.

You will carry out a lot of practical work, developing your skills in the lab and in the field.

You’ll also develop skills in data analysis, logical thinking, experimental design and ICT.

ASSESSMENT

- Three exams at the end of the course.
- The practical endorsement, assessed by your teacher during the course.

FUTURE PLANS

You will have developed invaluable transferable skills, which will help with any degree course, and with your future career.

A Level Biology is highly rated by universities, and is useful when applying for a wide range of courses. It is a prerequisite for life science degrees, and is usually a requirement for medicine.

TO APPLY

Grade 8 or 9 in GCSE Biology/Dual Award Science is highly desirable. The course has a mathematical component, and a 7 or better in GCSE maths is recommended.