

Invest + Inspire = iMPact!



2018-2019  
Gratitude Report



MOTHER MCAULEY LIBERAL ARTS HIGH SCHOOL





## 2018-2019 BOARD OF DIRECTORS

**Kate Shannon Boyle '82**, Chair  
Real Estate Broker, @Properties

**Christie Gallagher Sever '72**  
Founder and Consultant, Speaker's Edge

**Scott Allen**  
U.S. Dept. of Labor Public Affairs & Media Division

**Carol Martinelli Bartucci '81**  
Former Vice President, Exelon Corporation

**Sr. Nancy Cahill, RSM**  
Former Assoc. Professor, Saint Xavier University

**Susana Guzman-Dominguez '95**  
Family Mediation Services, 5th Municipal District

**Dr. Emelie Ilarde '87**  
Family Physician, Lawn Medical Center

**Sr. Marion Johnson, RSM**  
Former Saint Xavier Faculty

**Mary Acker Klingenberger '75**  
President, Mother McAuley

**Sr. Jean McGrath, CSJ, '62**  
Former Principal, Saint John Fisher School

**Robert Millerick**  
CRSB Examiner, Federal Reserve Bank of Chicago

**Ellen Napleton Roche '68**  
Attorney

**Dr. Dan Rowan**  
Cardiologist, Palos Health

**Ellie Brett Ryan '82**  
Northwestern University Medical Center

**Cheryle Wittert**  
Former President, BMO Private Bank



## Dear Friends,

Each school year brings excitement, hope and promise. It is filled with infinite possibilities for new beginnings and discoveries for our young women. The 2018-2019 year was no exception. This small publication is a big expression of our gratitude for the many ways you have iMPacted the lives of our students this past fiscal year. As you read through this report I know you'll be buoyed, as I am, by the many individuals and organizations who have contributed financially to make Mother McAuley the very best school for young women in Chicagoland.

The choice you make to be generous of spirit shapes the extent of our program, the direction of our school's future and the lives of the young women we educate. Your gifts – whether for our Future Ready campaign, the McAuley Fund, Mercy Day of Giving, class gifts or other areas – are changing outcomes for our girls in powerful ways. Our students are inspired to learn, lead and succeed every day. This success is measured in our 100% college acceptance rate, National Merit scholarship contenders, strong Advanced Placement scores, award-winning fine arts program, multiple state athletic championships, leadership accolades, service projects, summer immersion programs and so much more. Perhaps the greatest success is one that eludes all metrics but is the undercurrent throughout all we do: the belief that each and every girl is educated in the hallmarks of the Sisters of Mercy, instilling them with the confidence, compassion and inner peace to embrace their lives with no limits.

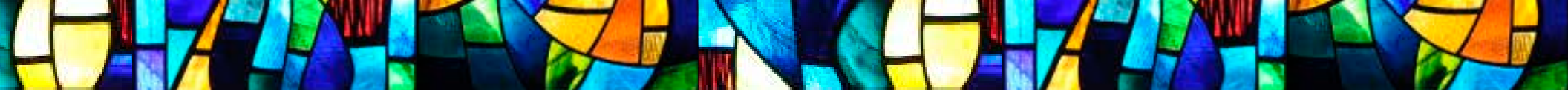
Much has been accomplished and there is always more to be done. Today, we have the highest number in our history of students receiving financial aid – 78 percent. In meeting with alumnae I listen as they revel with pride in the guiding force of their McAuley experience. Similarly, I have listened to stories of aspiration told by prospective parents who wish for a McAuley education for their daughter. Although the landscape of education has changed, I have faith that our community is resolute in ensuring the lifetime advantage of a Mother McAuley education is available to all who desire it. I stand in amazement at the timelessness of our mission and what it meant for so many, and what it will mean for many more to come.

I hope that as you consider the progress highlighted in this report and made possible through your dedication and commitment to our efforts you will know the depth of our gratitude.

In gratitude and mercy,

Mary Acker Klingenberg '75  
President





## Dear Friends & Supporters,



The many names that appear in this report reflect a tradition of giving dating back to the founding of Mother McAuley (then Saint Xavier Academy) in 1846. They represent a culture of philanthropy that has been expanding for more than 170 years and illustrate the tremendous impact of our alumnae and friends. This legacy, which we celebrate each day within our walls, shines best through the remarkable achievements of our young women.

We are blessed by the boundless generosity and commitment of donors who help our students flourish academically, spiritually and emotionally. We watch as our young women bring to school their energy, diversity, creativity, kindness and curiosity. They are enthusiastically engaged in learning and joyful of heart as they make friends and sisters for life. They push and challenge each other, never settling and always driven to bring forth to the world women who are learners, leaders and future-ready.

I'm pleased to share that the last fiscal year was one of integral growth on many fronts.

Our Future Ready campaign allowed us to complete necessary upgrades to our C-wing classrooms so we may better support our students, both now and in the future.

We continued to attract and retain the best educators and administrators who are dedicated to our mission and our vision of a school filled with dreamers and innovators.

Alumnae engagement and support grew through events like our Banner Year Reunion, Fore the Macs: Playing it Forward Golf Outing, Career Day and our new MAC-Tails happy hours.

Our scholarships continued to increase in number and amount, a critical component in ensuring the dream of a McAuley education becomes a reality for families who otherwise find a Catholic education beyond their reach.

We celebrated curriculum advancements through new partnerships with Project Lead the Way and Amazon Future Engineers and fostered students' leadership and soft skills through our Advice Beyond the Classroom program.

As you can see, we are thriving! You'll read about each of these and so much more on the pages that follow.

Whether your gift helps us to construct or renovate buildings, enhance our endowment, provide for scholarships, enrich our academic and athletic offerings, or increase student opportunities, we are grateful for your generous endorsement of what we do.

In Mercy,

Carey Temple Harrington

# Summer Immersion Stories

We know a healthy balance of academic, social and cultural experiences is important to empower the whole girl. Throughout these pages we will share stories of the many ways our young women pursue learning beyond the confines of the classroom through summer immersion programs. New adventures help them gain a global perspective and skills to ensure they are more than ready for careers and vocations in all walks of life.



**Julissa Rojas '22** attended Purdue University's Summer Engineering Program. Julissa lived on campus for a week, collaborating with students from around the country on various engineering projects, including designing an energy-efficient home. She also learned about engineering careers and the impact engineers have on our world.



**Mary Helen Hennessy '20** was selected to attend the Summer Performing Arts Program in vocal performance at the University of Michigan. Mary Helen auditioned and was accepted into the prestigious Solo Track section of the program, where she performed her first classical solo voice recital in Italian.



**Molly Maloney '20** was selected to attend the "FloChicago" Leadership Development Program at the University of Chicago this summer. Molly lived on campus for a week and attended leadership sessions, went on field trips to businesses, nonprofit organizations and communities throughout the city, and met with Chicago leaders, including Mayor Lori Lightfoot.

# Financial Statements

The Statement of Financial Position of Mother McAuley Liberal Arts High School summarizes the school's assets, corresponding liabilities and net asset classifications as of June 30, 2019 and June 30, 2018.

Individual program accounting is maintained in-house in accordance with relevant Generally Accepted Accounting Principles (GAAP) as promulgated by the Financial Accounting Standards Board (FASB).

## STATEMENT OF FINANCIAL POSITION

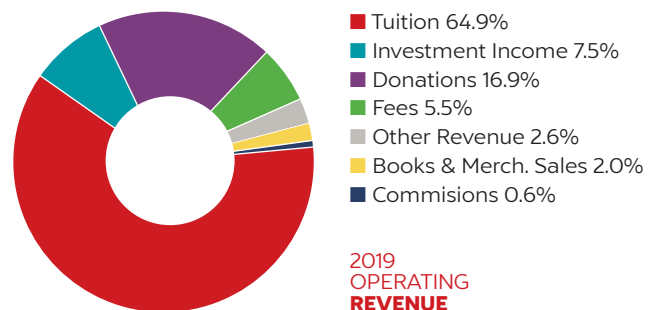
<i>Fiscal years ended June 30</i>	<b>2019</b>	<b>2018</b>
Current Assets		
Cash and Equivalents	\$ 105,793	\$ 251,728
Accounts Receivables	469,555	416,079
Contributions Receivable, Current Portion	1,661,156	1,601,046
Prepaid Expense and Other	102,788	102,775
Investments		
Unrestricted	519,052	414,812
Board Designated	4,604,484	4,357,097
Temporarily Restricted	4,438,590	5,105,486
Permanently Restricted	8,249,296	7,591,148
Property and Equipment	13,192,732	11,781,285
<b>Total Assets</b>	<b>\$ 33,343,446</b>	<b>31,621,456</b>

## LIABILITIES AND NET ASSETS

<b>Current Liabilities</b>		
Accounts Payable and Accrued Expenses	\$ 1,151,782	1,215,391
Deferred Revenue	999,993	991,926
Current Portion of Long Term Debt	--	314,940
Line of Credit	1,660,000	965,000
<b>Net Assets</b>		
Undesignated	\$ 12,239,301	11,080,468
Board Designated	4,604,484	4,357,097
Temporarily Restricted	4,438,590	5,105,486
Permanently Restricted	8,249,296	7,591,148
<b>Total Liabilities and Net Assets</b>	<b>\$ 33,343,446</b>	<b>31,621,456</b>

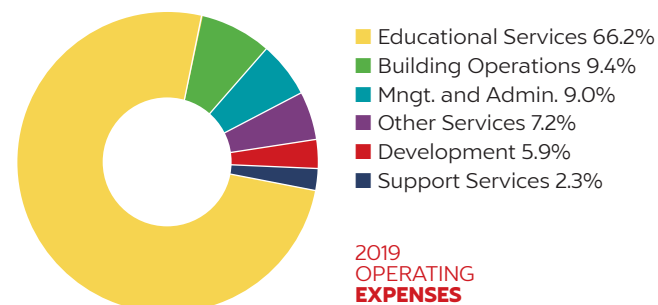
## STATEMENT OF REVENUE AND EXPENSES

<i>Fiscal years ended June 30</i>	2019	2018
<b>Operating Revenue</b>		
Tuition	\$ 9,533,381	\$ 9,435,685
Fees	809,923	775,211
Books and Merchandising Sales	292,763	348,182
Commissions	91,560	86,517
Donations	2,480,266	3,583,776
Other Revenue	387,634	417,353
Investment Income	1,092,883	1,305,761
<b>Total Operating Revenues</b>	<b>\$ 14,688,410</b>	<b>\$ 15,952,485</b>



## OPERATING EXPENSES

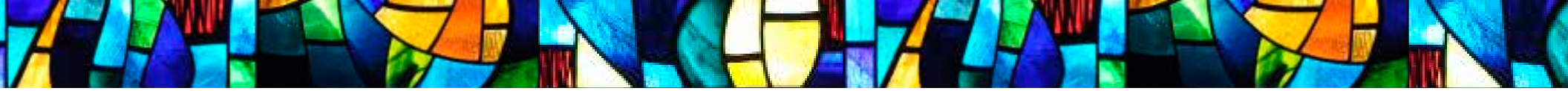
Educational Services	\$ 8,806,601	\$ 8,284,191
Management and Administration	1,197,069	1,237,194
Building Operations	1,250,458	1,792,733
Other Services	952,259	666,718
Development	782,657	871,946
Support Services	301,894	246,252
<b>Total Operating Expenses</b>	<b>\$ 13,290,938</b>	<b>\$ 13,099,034</b>



<b>Operating Revenue</b>		
<b>Over/(Under)</b>		
<b>Operating Expenses</b>	<b>\$ 1,397,472</b>	<b>\$ 2,853,451</b>

## SIGNIFICANT ELEMENTS OF THE SCHOOL'S FINANCIAL STATUS ARE AS FOLLOWS:

- Mother McAuley is committed to effective and efficient cost management.
- Mother McAuley continues to meet its commitment to the policy of funding depreciation for the future replacement of assets through the established Funded Depreciation Account.
- Mother McAuley's financial reports are audited annually by an independent auditing firm.
- Board Designated and Restricted net assets balances have been established for specific long-term purposes.
- Mother McAuley is committed to maintaining an appropriate balance of operational revenues and expenses intended to insure the financial stability required for a quality education.
- Mother McAuley strives to increase annual and major giving in order to meet the rising operational costs and the increasing demand for financial assistance.



# Scholarship Donor Breakfast

On April 12, we welcomed donors to Mother McAuley for a breakfast with our student scholarship recipients. This event offers a wonderful opportunity for students to share their gratitude for those who have supported them, as well as for donors to see and hear directly from our students how much of an impact their gifts have made.



*High school is hard, but McAuley makes it worth it. You come away with so many skills outside of academics that prepare you for life and the future.* KATHERINE DeSANTI '19





## NEW SCHOLARSHIPS

Our families make sacrifices daily to send their daughters to Mother McAuley. We are grateful to all of our donors who have created scholarships in order to help ease that financial burden. In the 2018-2019 school year, we were able to award four new scholarships!

### Helen and Dick Carey Scholarship

The Helen and Dick Carey Scholarship was established by a Mother McAuley alumna in honor of her parents. This scholarship will be awarded each year to an incoming freshman whose mother, grandmother(s), and/or aunt(s) graduated from Mother McAuley, and will provide \$1,000 in tuition assistance to each recipient throughout her four years at Mother McAuley.

### Mary Wurst Scholarship

The Mary Wurst Scholarship was created in memory of Mary Wurst, mother of mathematics faculty member Vicki Kazin and a dedicated advocate of Catholic school education within our community. This renewable half-tuition scholarship will help make an incoming freshman's dream of attending a Catholic high school a reality.

### Sister Maura Mighty Mac Spirit Scholarship

This scholarship was established in honor of Sr. Maura Lowrey, RSM, the biggest fan of Mighty Mac athletics! Since 1998, Sr. Maura has been in the crowd cheering on the Mighty Macs in volleyball, basketball, water polo and softball—not to mention at pep rallies and assemblies. Her cheers, advice, and prayers have been an inspiration to Mighty Mac athletes for decades. This \$250 nonrenewable scholarship will be awarded each year to a current student who shows the same amount of spirit and dedication to supporting McAuley teams.

### Stephen and Winifred (Gardner '59) Ligda Scholarship for Service

Stephen and Winifred (Gardner '59) Ligda have been dedicated supporters and volunteers at Mother McAuley for many years. Steve, who passed away in 2017, was a former Chair and Life Trustee of the Board of Trustees. This scholarship was established in Steve's memory, honoring his commitment to his Catholic faith through service to his parish of Most Holy Redeemer, Mother McAuley and the community. Each year, this \$1,000 scholarship will be awarded to a current freshman who is a graduate of Most Holy Redeemer School and has shown a strong dedication to giving back to her community through service.



# Future Ready Campaign

The beginning of the 2018 school year brought the opening and blessing of approximately 17,000 square feet of renovated existing space in C-wing classrooms and hallways, representing the first overhaul of the C-wing classrooms since the school opened in 1956.

C-wing, located nearest to 99th Street, is home to English, math and social science classrooms.

Renovations and upgrades include:

- 21st century, modular furniture that allows for multiple configurations, e.g., solitary study, group work, conference seating, etc.
- modernized and environmentally-conscious finishes and surfaces, including new antimicrobial carpet tiles that can be easily cleaned and individually replaced, as needed.
- flat panel televisions that allow for compatibility with the iPad® and other technological advances, such as Skype.
- roller window shades to reduce heat loss as well as glare often created by natural light.

- LED, energy-efficient and dimmable lighting, with smart controls.
- new doors and hardware.
- fresh, bright coats of wall paint.

The outcome provides all students with a premier 21st-century college preparatory experience that is rich in collaboration and project-based learning.

The momentum of the campaign continues, thanks to generous donors whose gifts allow us to create an environment that is transformative for our students. We know we can continue to rely on the support, prayers, and financial generosity of donors now and as we continue our plans to make our school, and the young women we serve, Future Ready.



*Take advantage of every opportunity at McAuley because it allows you to find things you are truly passionate about. When you come here, you will find people who love the same things as you and who support you in whatever you want to pursue.* GRACE HYNES '19

*May these walls breathe with the faith,  
hope, and love of all those who have  
come before and will come after us.*

FR. TOM HURLEY



FutureReady



#### Houlihan Family Entrance

Graciously underwritten by honorary campaign chair and Life Trustee chair, Mr. Fran Houlihan. He and his wife, Patricia, are parents to four McAuley alumnae: **Kathy Houlihan Janke '78, Mary Fran Houlihan Mattoon '80, Maureen Houlihan Otten '82 and Aileen Houlihan Fitzgerald '91.**

#### Kitty Mac Café

**Ellen Napleton Roche '68 and Kathy Roche Napleton '68** and guests pose in front of the recently-named Kitty Mac Café, funded by generous donations from the Napleton family. The Café offers Starbucks brewed beverages, and snacks, before and after school, and during all lunch periods.



**\$5.6**

MILLION RAISED  
Including \$500,000+ for  
scholarships and financial aid

**87%**

WOMEN DONORS

**16**

RENOVATED CLASSROOMS

**10**

NEW HALLWAY BENCHES

**416**

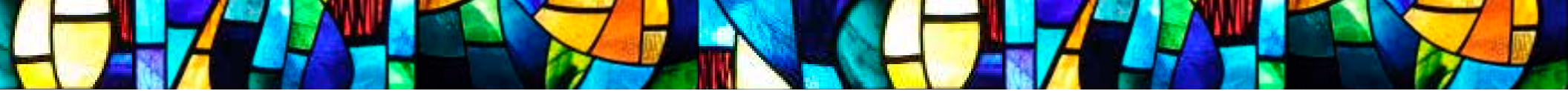
MODULAR DESKS

**6**

NEW ADMINISTRATIVE  
& STAFF OFFICES

**2**

ADDITIONAL  
MEETING ROOMS



# Class of 2019

The Class of 2019 set an impressive bar for success, celebrating achievements in academics, service, athletics and more. They matriculated at colleges and universities across the United States, well-prepared, willing and ready to make their iMPact.



**66** WITH ALUMNA MOTHERS

**10** WITH ALUMNA GRANDMOTHERS



## AWARDS & ACCOLADES

- 2 National Merit Commended Scholars
- 57 Illinois State Scholars
- 13 Athletic scholarships
- 2 A. Franklin Pilchard Scholars
- 1 National Hispanic Scholar
- 2 Chick Evans Scholars
- 88 National Honor Society members
- 35 Catherine McAuley Honors Scholars



**227**  
GRADUATES

**100%**  
ACCEPTANCE  
RATE

**87%**  
ACCEPTED TO  
FIRST-CHOICE  
SCHOOL

**92%**  
COMMITTED  
TO FOUR-YEAR  
COLLEGE OR  
UNIVERSITY

**8%**  
COMMITTED  
TO A TWO-YEAR  
COLLEGE

**102**  
INTENDED  
S.T.E.M.  
MAJORS



Sabrina Mrozek-Tomalis '20 was invited to attend the National Student Leadership Conference on Medicine and Health Care at Northwestern University. Sabrina and her team performed clinical rounds, learned surgical techniques and conducted a research project, presenting their findings on the final day. *Sabrina is a Catherine McAuley Scholarship for Service recipient and a Sister Ellen Marie Ryan, RSM scholarship recipient.*



Eva Molina '20 spent her summer working at The Stupp Laboratory at Northwestern University. Eva helped a graduate student with her experiments in the lab concerning proteins to help regenerate the nervous system in the case of an injury. *Eva is a Board of Trustee and a Big Shoulders scholar.*



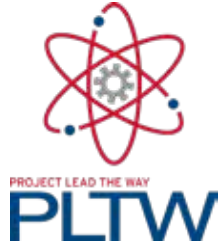
Mia Perez '20 traveled to Saratoga, Wyoming to volunteer as a Junior Counselor for the Big Shoulders Fund Staddle Camp! This camp offers select middle-schoolers from Chicago the chance to participate in various science enrichment sessions, team building activities, and explore and appreciate the nature around them. Mia attended the camp as a seventh-grader and was thrilled to have the opportunity to give back to the program as a camp counselor. *Mia is a Sisters of Mercy Scholarship recipient and a Big Shoulders Scholar.*

# Summer Immersion Stories



# Academics

Employers today are starving for women who are equipped with the skills needed to survive in the rapidly expanding S.T.E.M. fields (Science, Technology, Engineering, and Mathematics). McAuley is passionate about educating our young women to thrive in this new reality. Through S.T.E.M related courses, projects, and extracurricular activities, we are developing students who take thoughtful risks, engage in experiential learning, persist in problem-solving, embrace collaboration, and work through the creative process. Providing opportunities that advance our young women’s intellect and potential is a hallmark of a McAuley education.



## Project Lead the Way

This hands-on project-based program provides students with relevant, stimulating, enrichment opportunities. As a result of this new program student enrollment in Computer Science and Engineering courses increased by 80% for the current 2019-20 school year.

## Amazon Future Engineer Program

In January, McAuley was one of the first all-girls’ schools in the nation to be named a partner in the Amazon Future Engineer program! This opportunity:



- encourages girls’ exploration of S.T.E.M.
- includes resources for students taking A.P. Computer Science Principles
- provides students exclusive opportunities for scholarships and internships at Amazon

These programs augment McAuley’s S.T.E.M. pipeline and are a fantastic complement to courses and clubs like Engineering Principles, Computer Science Essentials and Art and Emerging Technology, and Girls Who Code.



### Professional Advice Beyond the Classroom (ABCs)

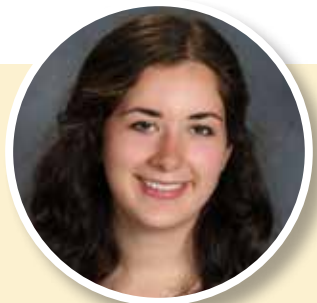
This program sets the stage for today's learners to become tomorrow's leaders. Students are connected with business professionals who help them develop networking, time management, presentation and interview skills to serve them in life and careers. Through field trips students gain first-hand exposure to the C-suite, boardroom and more. The course culminates with a final presentation to business executives

*Among all-boys' and coed schools, the 2019 McAuley team took first place for its presentation.*

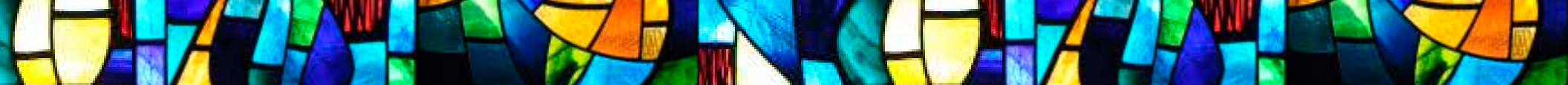
**Did you know...**

- Women hold only 25% of all STEM jobs
- 74% of high school girls are interested in STEM
- Girls who try A.P. Computer Science in high school are 10 times more likely to major in the subject in college
- Graduates of girls' schools are 3 times more likely to have an interest in engineering careers

*(National Coalition of Girls' School)*



*The atmosphere is the best place to learn. I came into McAuley very shy and reserved and through my four years here I have become a more vocal student.* HANNA MAHERAS '19



# Faith & Service

Mighty Macs are empowered to build a community where they partake in and appreciate the Catholic faith, as well as respect and care for each other and those in need.

*Let us fit young women for earth  
without unfitting them for Heaven.*

CATHERINE McAULEY



17,000

TOTAL SERVICE HOURS

2

APPALACHIAN  
MISSION TRIPS

60+

COMMUNION SERVICES

4

KAIROS WEEKENDS

1

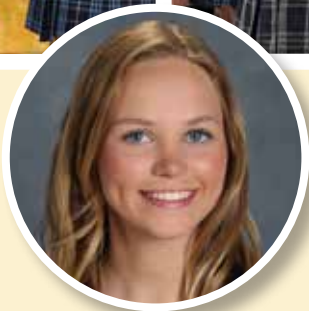
BUS LOAD OF FOOD ITEMS  
DONATED TO ST. BLASE  
FOOD PANTRY

215

PAIRS OF SHOES DONATED  
TO SHARE OUR SOULS

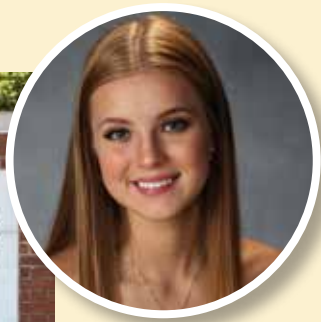
30

BLANKETS KNITTED FOR  
THE COURAGE PROGRAM



*Going on Kairos was the most valuable experience for me at McAuley. It taught me so much about myself and my identity and made me realize my worth. It impacted my life in and out of school and made me feel happier and more positive.* MADELINE KNIGHTLY '19





Martina Maples '20 attended "Medicine & the Body: Exploring Narrative Mysteries" at Johns Hopkins University. She learned about the unexpected ways humanities intersect with medicine, science and technology.



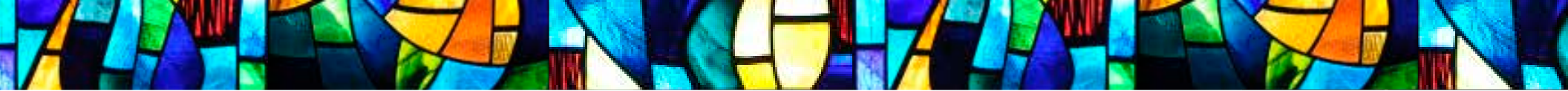
Marilyn Orellana Segarra '19 was selected to be a mentor for the Malott Family Zoo Intern Program (ZIP) at the Lincoln Park Zoo. During the summer of 2018, Marilyn participated in ZIP as an intern, taking part in research experiences, professional development activities and educating zoo guests about animal and conservation sciences. This past summer, Marilyn was one of only two interns selected to be a program mentor! *Marilyn was a Hightsight and Big Shoulders scholar.*



Jackie Munoz '20 traveled to Japan this summer through the AFS Language/ Intercultural Immersion Program. Jackie spent five weeks getting to know the people, customs and the Japanese language. She and her group explored Japanese art and food and visited historic locations. *Jackie is a Hightsight and Big Shoulders scholar.*



# Summer Immersion Stories



# Fine Arts & Athletics

McAuley women take their place at the easel, on the court or center stage through teams, clubs and experiences that challenge them to belong to something bigger than themselves. They believe in what they can achieve and not be afraid to fail. They push themselves to become better people, better students, better athletes and teammates, better artists and performers, who are prepared to succeed in life.



**200+**

CAST, CREW AND  
MUSICIANS FOR  
WHITE CHRISTMAS

**1**

"BEST ACTRESS" IN  
ILLINOIS HIGH SCHOOL  
THEATRE COMPETITION

**16**

SCHOLASTIC  
ART AWARDS

**23**

McCORMICK FOUNDATION  
SCHOLASTIC PRESS  
ASSOCIATION AWARDS

**4**

ILLINOIS STATE  
THEATRE FESTIVAL  
ATTENDEES

20  
GCAC  
ALL-CONFERENCE  
ATHLETES

2nd  
PLACE STATE  
FINISH FOR  
BASKETBALL

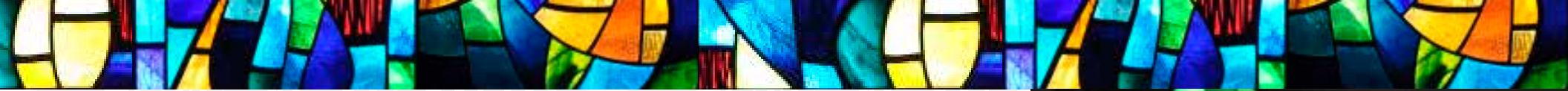
3rd  
PLACE STATE  
FINISH FOR  
WATER POLO

428  
STUDENT  
ATHLETES

18  
COLLEGE  
ATHLETIC  
COMMITMENTS



*Being on my swimming and water polo team at McAuley was so valuable for me. This is how I met all of my friends and was able to create a family. I know my girls always have my back, and this is thanks to being a part of a great team.* MEGAN KILROE '19



Mary Burke on behalf of her parents



Sue Scully Schultz '73



Sister Mary Catherine McDonagh, RSM



# Celebration 2019

February 1, 2019  
Beverly Country Club

Honoring **Richard (Dick) and Maryjeanne Burke** as recipients of the *Catherine McAuley Leadership Award*, and **Sister Mary Catherine McDonagh, RSM** and **Susan Scully Schultz '73** *Life Trustees*.

The Burkes have supported charitable, civic, and educational institutions throughout Chicago. As a trustee of the Daniel P. Haerther Charitable Trust, Dick has been instrumental in overseeing scholarship awards that have benefitted past and current McAuley students. Today, 12 McAuley students have the distinction of being Haerther Scholars.

**Susan Scully Schultz '73** served as a member of the Mother McAuley Board of Trustees from 1990 to 1995.

**Sister Mary Catherine** served on the Board of Mother McAuley from 1984 to 1987.





**Our thanks...** We are especially grateful to these many groups and individuals who helped underwrite the cost of this event by providing a sponsorship.

**SPONSORS**

**Gold**

- Beverly Bank/A Wintrust
- Community Bank
- CME Foundation
- Lombard Company
- Marquette Bank
- PCS International
- Platinum Wight & Company

**Silver**

- Barraco's Pizza
- Country House
- William Quinn & Sons

**Bronze**

- Accurate Printing
- Bigane Paving/Anne Bigane Wilson '76
- Dan and Mary Anne (Hennessy '75) Capron
- Herff Jones/Jim Cranley
- The Fran Houlihan Family
- The Hughes Family
- The Irish Fellowship Club of Chicago
- Mueller & Company
- Season Comfort
- Dan and Sarah (Curran '94) Sennett
- Service Unlimited
- Steuber Florist
- Dan and Carol (Goesbeck '68) Sullivan
- Waddell & Reed/Jason Dobrzynski and Maralynn Deacy Kearney '85

**COMMITTEE**

- Mark and Kate (Shannon '82) Boyle
- Mike and Monica Carey
- Bart and Mary Ellen (Carroll '84) Clifford
- John and Jeanne (Flanagan '88) Connelly
- Mark and Debbie (Morgan '76) Essig
- Chuck and Kelley Flynn
- Adam and Nora (Capron '02) Gifford
- Tom and Carey (Temple '86) Harrington
- Patrick and Megan (Curran '89) Hurless
- Jerry and Mary (Acker '75) Klingenberger
- Ryan and Eileen (Boyce '03) O'Reilly
- Severo and Suzanne Pedroza
- Marty and Susan (Scully '73) Schultz

Save the Date

CELEBRATION  
2020

**MOTHER McAULEY  
LIBERAL ARTS HIGH SCHOOL  
HONORS**

Alderman Matt and  
Cara (Dunne '94) O'Shea  
*Catherine McAuley Leadership Award*

Sister Patricia A. Murphy, RSM  
John Scanlan  
*Life Trustees*



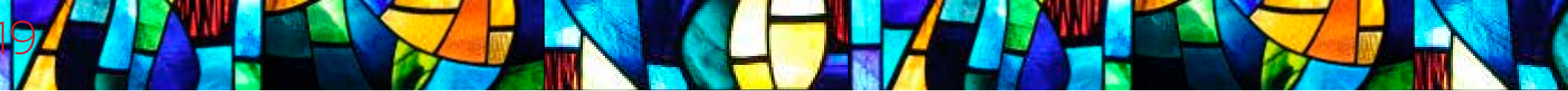
Please join us  
Friday, January 31, 2020

Beverly Country Club  
87th Street & Western Avenue

6:00 pm

Cocktails | Dinner |  
Auction & Raffles | Paddle Raise

*Cocktail Attire*



# Thank you...

Held at Ridge Country Club, the Fore the Macs: Playing it Forward golf outing raised enough money to fund 53, \$1,000 Tradition of Excellence scholarships for the daughters and granddaughters of McAuley alumnae who will become members of the Class of 2023.

## SPONSORS

**Caring Heart Award Sponsor**  
Wight & Co.

**Master Sponsors**  
Bigane Paving Co.  
County Fair

**19th Hole Sponsors**  
A Friend of Mother McAuley  
Barraco's  
Beverly Bank & Trust Company  
CGT Aesthetics and Evergreen Care Center  
Taurus Flavors

**Putting with the President Sponsors**  
In Memory of Caroline Griffin '12  
Marquette Bank

**Driving Force Sponsors**  
Herff Jones / James Cranley  
Lettuce Entertain You Restaurants /  
Jerrod Melman

**Golf Cart Sponsors**  
Season Comfort Corp Heating and  
Air Conditioning  
Steuber Florist and Greenhouses  
Waddell & Reed: Jason Dobrzynski &  
Maralynn Kearney, The Corsalus Group

**Front Entrance Sponsor**  
Barb Hamel '75

**Hole in One Sponsor**  
Ed Napleton Honda

**Tee Sponsors**  
19th Ward: State Rep Fran Hurley,  
State Senator Bill Cunningham, &  
Alderman Matt O'Shea  
Joseph M. Wiedemann and Sons Inc.  
Local 399, International Union of  
Operating Engineers  
Mike Griffin's Bede's Boys  
Pipefitters Association Local 597  
The Rohan Family: Mary Pat (Schumacher)  
'76, Mary Kate '03 & Clare '12

**Hole Sponsors**  
Accurate Printing  
The Bigane Girls: Anne '76, Katie '78,  
Sheila '79, Meg '82, Julie '84  
Bush Family Eye Care  
Country House Restaurant,  
Catering & Food Service  
Edward Touhy Guardian Angel Foundation  
Edwards Insurance Agency  
Friend of Mother McAuley  
Jane O'Neil Quinlan '74 -  
Oak Lawn Village Clerk  
Kate Shannon Boyle '82 - Coldwell Banker  
Residential Brokerage  
Kathleen Moody Malone '97 -  
Malone Residential  
Little Company of Mary Hospital  
and Health Care Centers  
Local 134 International Brotherhood  
of Electrical Workers  
Marti Wendt Doherty '71, Jennifer Pullos  
Hynes '90 & Helen Kubey Tovey '91  
Meemic Insurance for Educators:  
Libby Linares ('95) Insurance Agency  
Solution 3 Graphics  
St. Cajetan Men's Club  
St. Cajetan Women's Club  
State Representative Kelly Burke  
The White Family - Colleen Quinlan  
White '94 and Grace White '22  
William Quinn & Sons Landscape  
Contractors





## FutureReady

### Thank you...

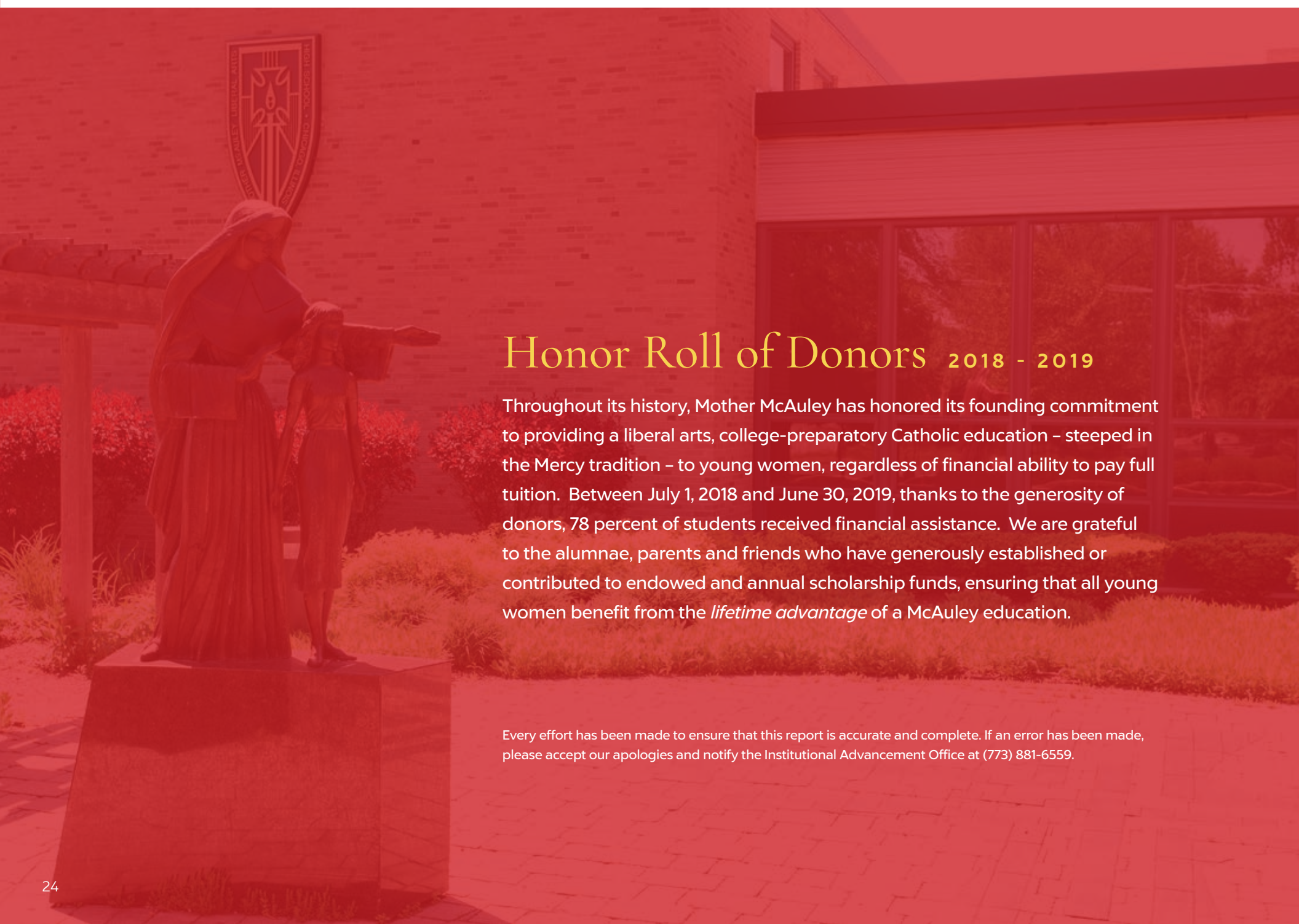
We are grateful to these donors who have contributed since the inception of the Future Ready campaign.

Ann Acker  
Dale E. Adams  
Scott and Susan Allen  
Anonymous  
Bank of America Matching Gifts Program  
Andy and Carol (Martinelli '81) Bartucci  
Joe and Sheila (McNamara '83) Bettinardi  
Big Shoulders Fund/James O'Connor  
Meg Bigane '82  
Mrs. Michael Birk  
Mark and Kate (Shannon '82) Boyle  
Joan Bransfield SXA '52  
Sister Dorothy D. Burns, RSM  
Sister Cathleen M. Cahill, RSM  
Dan and Mary Anne (Hennessy '75) Capron  
Tony and Joan (Wallace '61) Carey  
Mike and Monica Carey  
Chicago Mercantile Exchange Foundation  
Bart and Mary Ellen (Carroll '84) Clifford  
Kevin and Kelly (Doyle '94) Coakley

Dennis and Peggy (Culloton '85) Coghlan  
Sister Mary Brian Costello, RSM  
William J. and Anne (Edwards '73) Cotter  
Sister Mary Joella Cunnane, RSM  
Paul and Jayne Dederichs  
Jen Rees DeJarld '87  
Jim and Marti (Wendt '71) Doherty  
Paul and Deborah Duggan  
Jane A. Ehrenstrom '73  
Exelon Matching Gifts Program  
Fifth Third Bank  
Rob and Kim (Febel '72) Figliulo  
Tom and Laurie (Wysocki '74) Fitzgerald  
In memory of Jan Malloy  
Sister Marie Fox, RSM  
Fred J. Brunner Foundation  
Gertrude Gallagher/The Gallagher Family  
Patricia Garrity '63  
Jane Gately '73  
Mark and Laurie Hajduch  
Barbara Hamel '75  
Sister Mary Hanseder, RSM  
Thomas and Nancy Hanson  
Thomas and Carey (Temple '86) Harrington  
Tom and Ann (Bridgman '82) Hartnett  
Mary Cartan Hendry '63  
Patricia A. and Francis J. Houlihan Foundation  
The Hughes Family  
Patrick Hurlless and Megan Curran-Hurlless '89  
Catherine Barry Ipema '73  
Sister Marion Johnson, RSM  
Kelley Family Fund/Lawrence and Carrie Kelley  
Julie Moody Kemnitz '86  
Mariellen O'Donnell Kill '74

Jerry and Mary (Acker '75) Klingenberger  
Robert Klingenberger  
Joy Hansen Kuchler '57  
Stephen and Katherine (Bigane '78) Larson  
Raymond and Deanna Lazzara  
Susan Chylla Lindquist '84  
The Lombard Company  
Michael and Maura Macander, MD  
Sister Campion Maguire, RSM  
Michael and Cathy (Gallagher '75) Maloney  
Dr. Terry Maltby, RSM  
Mary Ann Benjamin Marks '64  
Marquette Bank  
Anne Ragen McNulty '69  
Robert and Cecily (Ahern '81) Millerick  
Mary Ellen Moriarty '73  
Sister Patricia A. Murphy, RSM  
Francie Murphy '73  
Ed and Kathy (Roche '68) Napleton  
Kathleen Napleton '76  
The Napleton Family Foundation  
Kathleen Ragen Nolan  
Robert O'Brien, Sr., in memory of Gerry McCarthy O'Brien SXA '37  
Kate O'Malley '82  
Mary Ragen O'Rourke '65  
Sheila Owens '77  
Ozinga Bros. Inc.  
Jeanne Bleeker Palmisano '63  
Barbara Moore Pasquinelli SXA '57  
Mariann Rebenson Piano '75  
Jammee Post '93  
Joan Curtin Prendergast '64  
Jane O'Neil Quinlan '74 and Walter Quinlan  
James M. Ragen Memorial Fund

Therese Ragen '67, PhD  
William and Catherine Ragen  
Susan Cronin Real '77  
Rosemary Wolf Rehak '67  
Bridget Reidy '80  
Frances L. Robinson, Esq. '74 and John Donohue  
James and Ellen (Napleton '68) Roche  
Daniel Rowan, MD and Susan (McNicholas '76) Rowan, DDS  
Susan Rowe '66  
Mary Jean Ryan '76  
Mark and Maura (Clarke '87) Saas  
Barry and Anne (McCarthy '66) Sabloff  
Susan Sanders RSM '69, PhD  
Marty and Susan (Scully '73) Schultz  
The Schwaller Family  
Judith Kosloskus Scully SXA '58, PhD  
Mark and Christie (Gallagher '72) Sever  
Laura Shallow '75  
Sisters of Mercy West Midwest Community  
Sister Betty Smith, RSM  
Roe and Penny (Witt '62) Stamps  
Dan and Carol (Goesbeck '68) Sullivan  
Marita Carey Sullivan '65  
Sun Capital Partners Foundation  
Tellabs Foundation  
Thomas and Ellen (Danaher '71) Tully  
Jean Morman Unsworth  
Molly Bridgman Vandeveld '84  
Michael Vanier  
Walsh Foundation/Dan and Patty (Reynolds '65) Walsh  
Gaines and Carole (Intrieri '68) Wilson  
In memory of Edward and Jane Bigane, Jim and Anne (Bigane '76) Wilson  
John and Cheryle Wittert



## Honor Roll of Donors 2018 - 2019

Throughout its history, Mother McAuley has honored its founding commitment to providing a liberal arts, college-preparatory Catholic education – steeped in the Mercy tradition – to young women, regardless of financial ability to pay full tuition. Between July 1, 2018 and June 30, 2019, thanks to the generosity of donors, 78 percent of students received financial assistance. We are grateful to the alumnae, parents and friends who have generously established or contributed to endowed and annual scholarship funds, ensuring that all young women benefit from the *lifetime advantage* of a McAuley education.

Every effort has been made to ensure that this report is accurate and complete. If an error has been made, please accept our apologies and notify the Institutional Advancement Office at (773) 881-6559.





**CLASS OF 1946**

**McAuley Sponsor**  
Anonymous

**CLASS OF 1951**

**McAuley Supporter**  
Marietta Spalo Moore  
Sari Gallagher Nagle

**McAuley Believer**  
Virginia Horvath Kirwin  
Jane McCormick Nilles

**CLASS OF 1952**

**Circle of Mercy**  
Joan Bransfield

**McAuley Supporter**  
Joan Wall DiLeonardi, PhD  
Marianne Gastreich Zelewsky

**McAuley Believer**  
Jean Geary Kennedy

**CLASS OF 1954**

**McAuley Believer**  
Bev Horvath Giannelli  
Patricia Daley Martino  
Sistie (Clare) Doherty McEnery  
Susie Black Webb

**CLASS OF 1955**

**Circle of Mercy**  
Marion McFarland

**McAuley Supporter**  
Marge (Wild) Livingston

**McAuley Believer**  
Mary Alice Nebel Roche  
Marlene Hynes Ryan  
Mary Kay Stapleton Zawaski

**CLASS OF 1956**

**McAuley Supporter**  
Nancy O'Toole Doppke

**McAuley Believer**  
Patricia Moran, EdD

**CLASS OF 1957**

**Circle of Mercy**  
Barbara Moore Pasquinelli  
Nancy Lynch Ryan

**McAuley Supporter**  
Mary Jane Cavanaugh Rodriguez

**McAuley Believer**  
Trudy Clarke Miller

**CLASS OF 1958**

**Agatha O'Brien Benefactor**  
Judith Kosloskus Scully, PhD

**McAuley Supporter**  
Peggy Moran Donahue  
Helen O'Hara Mick  
Marianne McNamara Scanlon  
Carole Guinta Wisner



Mary Jo Zinngarbe Young  
**McAuley Believer**  
Alice Lenehan Brennan  
Pauline Trilla May  
Kathleen Barnett O'Hara  
Patricia Donovan O'Rourke  
Margery Ryan  
Peggy Altman Smith  
Kathleen Kelly Stapleton  
Joy Purdy Sullivan  
Anne Connors Whealan

**CLASS OF 1959**

**Circle of Mercy**  
Winnie Gardner Ligda

**McAuley Supporter**  
Irma Coulas Hammer

**McAuley Believer**  
Therese English Brossard  
Patricia Scott Hughes  
Therese Mahoney  
Elaine Fitzpatrick Smuczynski

**CLASS OF 1960**

**Circle of Mercy**  
Denise Cavanaugh

**McAuley Sponsor**  
Sheilah O'Connor, MD

**McAuley Supporter**  
Ellen McMahon Christopher  
Sister Frances Crean, RSM, PhD  
Annette Fowler Dattulo  
Josephine Czerwinski Fitzgerald  
JoAnn Kudia Gruca, PhD  
Mary Ann McCormick Helmold  
Maureen McNicholas Quinn  
Peggy Podesta VanZeyl  
Carole Barskis Weber

**McAuley Believer**  
Bernadette Kwak Hogan  
Lynne Krueger Krause  
Ginny Duggan Murphy  
Gladys Rigg Schuler  
Marilyn Walsh Wohlberg

**CLASS OF 1961**

**McAuley Sponsor**  
Christine Wheeler Dowling

**McAuley Supporter**  
Cheryl Stransky Munson Beall  
Joan Wallace Carey  
Maureen Shevlin Foley  
Joan Caresio Grassman  
Catherine Murray Kittridge  
Joan VanderPloeg Klarich  
Heather McIntosh McCullough  
Fidelis Crot McFadden  
Mary Louise O'Grady Tobin

**McAuley Believer**  
Mary Ellen Dolina Kopetz  
Susan Lippert Script  
Susanne Smith  
Bernadette Sullivan Tyler



**CLASS OF 1962**

**McAuley Sponsor**  
Leslee Blankshain Bormet  
Marcia Diaz Schultz

**McAuley Supporter**  
Mary Madden Carey  
Mary Feeley Cummings  
Maureen Wright Glass  
Sister Jean McGrath, CSJ  
Jane Dowd Morrissey  
Margaret Shevlin Slattery  
Anne Wilson Vulich

**McAuley Believer**  
Susan Sheridan Mack  
Patricia Kilty Mehler  
Karen Murray Pavlak  
Michele Campbell Roedel

**CLASS OF 1963**

**Frances Xavier Warde Benefactor**  
Jeanne Bleeker Palmisano

**Circle of Mercy**  
Mary Ann Flynn  
Mary Cartan Hendry  
Ellen Carey Nowicki

#### **McAuley Supporter**

Cele Konrad Arnold  
Nancy Para Arnold  
Ellen Lattyak Arundel  
Sister Marion (Dolly) Cypser, RSM  
Zita Simutis Drillings, PhD  
Francine Finnegan  
Charlene Green Kelly  
Peggy O'Brien Larson  
Sharon Barrett Redmond  
Patricia Seban Singler

#### **McAuley Believer**

Rita McCurdy Bertz  
Rosemary Murphy Blyth  
Mary Carey  
Maureen Kennedy Gaughan  
Marianne Swierczek Hawkins  
Mary Jane Siefert McDermott  
Mary A. Mitchell Negrilla  
Peggie Murphy Rafferty  
Doris Wielgosz

#### **CLASS OF 1964**

##### **Frances Xavier Warde Benefactor**

Mary Ann Benjamin Marks

##### **Circle of Mercy**

Sheila Butler King

##### **McAuley Sponsor**

Mary Therese Wolf and  
Ignacio Larrinua

##### **McAuley Supporter**

Helen McShane Baker  
Kay Marfise Byrnes  
Mary Ann Wright Davis  
Maureen Fleming  
Michele Leuver Giachetti  
Mary Jane Radtke Klein  
Margaret O'Connor Machon, PhD  
Joan Curtin Prendergast  
Cathy Seban Schoessling



##### **McAuley Believer**

Theodora Bartosiewicz Bozych  
Marilyn Hatzell Nessner  
Jerri J. Olson  
Laurie Koller Scott  
Sue Mitchell Scott  
Hillary Lukaszewski Vincent

#### **CLASS OF 1965**

##### **Frances Xavier Warde Benefactor**

Ming (Marion) Bleeker Butler  
Patty Reynolds Walsh

##### **McAuley Sponsor**

Anonymous  
Elizabeth Cronin  
Maryann Scully Shaunnessey

#### **McAuley Supporter**

Suzanne Sheridan Bocchini  
Carol Donohue Christofano  
Anonymous  
Carol Fiscella Condron  
Judy Muraida DiFilippo  
Jean Hennessy Guerin  
Judy Rohan Hicks  
Joan Hempstead Kearney  
Susan Millerick Kelley  
Bonnie Bohling Kreitler  
Maureen Diggins McSherry  
Patricia Murphy Rios

#### **McAuley Believer**

Peggy Grist  
Janet North Gustafson  
Janet Young Harms  
Mary Mullarkey Neville  
Barbara Kukuraitis Nowak

#### **CLASS OF 1966**

##### **Agatha O'Brien Benefactor**

Anne McCarthy Sabloff

##### **Circle of Mercy**

Susan Rowe

##### **McAuley Sponsor**

Marikay Thompson Herdman

##### **McAuley Supporter**

Mary Fran Kleifgen Beno  
Lauretta Blake  
Mary Alice Riedle Crisler  
Pat Kata Czarnecki  
Mary Therese Gorman Gallagher  
Therese Gordon Lahart  
Julie Rohan MacKenzie  
Denise Norris Matthews  
Maureen Farrell McCarthy  
Kathleen McDermott  
Mary McGlone  
Judith Ruzich Perkins

Mary Ann Hyland Rowan  
Adrienne Johns Whitely  
McAuley Believer  
Barbara Fryk Boyer  
Patricia Scully Keane  
Eva Kluk Kuzmanich

#### **McAuley Believer**

Barbara Fryk Boyer  
Patricia Scully Keane  
Eva Kluk Kuzmanich

#### **CLASS OF 1967**

##### **Circle of Mercy**

Margaret Dee Merrion  
Therese Ragen, PhD

##### **McAuley Sponsor**

Suzanne McCarthy Shanahan

##### **McAuley Supporter**

Mary Kay Mulryan Balchunas, PhD  
Linda Janus Gruber  
Maureen Martin Moskal  
Sharon Cunnea Orawiec  
Margaret Walsh Sisko  
Jeanne Stonehouse Zurawski

##### **McAuley Believer**

Anna Racky Distel  
Kathleen Sweeney Higgins  
Kristine Kiefer Hipp, PhD  
Joan Murphy Kane  
Sharon Ksiazek Lapinski  
Kathy Shaughnessy Lucas  
Mary Stingley Nitschke  
Sheila Nickel Stojak  
Lynne Jason Strutz

#### **CLASS OF 1968**

##### **Agatha O'Brien Benefactor**

Katherine Roche Napleton  
Ellen Napleton Roche

#### **Circle of Mercy**

Carol Groesbeck Sullivan  
Carole Intriери Wilson

#### **McAuley Sponsor**

Hon. Gloria G. Coco, ret.

#### **McAuley Supporter**

Pat Fitzgerald Brennan  
Barbara Scully DeBerge  
Mary Kay Durkin Doyle  
Sallie Wiechern King  
Karen M. Murphy, MD  
Lynne Millerick Murray  
Joan Small Papp  
Maureen McGrath Sand

#### **McAuley Believer**

Sue Stanley Berry  
Mary Alice Campaigne  
Catherine Daly  
Sue Schwartz Zugenbuehler

#### **CLASS OF 1969**

##### **Circle of Mercy**

Anne Ragen McNulty  
Susan Sanders, RSM, PhD





**McAuley Sponsor**

Mary Patricia Benz  
Debra McDermott Clamage  
Shirley Trapp Mullally  
Betty Caveney Rocci  
Maureen Cannon Spelman, EdD

**McAuley Supporter**

Nancy Hartigan Acker  
Nancy Baldwin  
Janice Biang  
Therese Murray Bolton  
Mary Jo Murabito Burfeind  
Carol McHugh Burke  
Gini Burns  
Catherine Hickey Carey  
Jackie Quillinan Carroll  
Peggy Sullivan Clark  
Patricia Shanahan Connors  
Sheila Corrigan  
Lillian Croke  
Patricia Cunningham Fee  
Carol McGinnis Fleming  
Christine Gockman-Brown, PhD  
Louise Klees Haslett  
Jean Naumann Hiss  
Cheryl Hunt  
Kathleen Hogan Johnson  
Maryellen Joyce  
Barbara Campbell Kwiatt  
Carol Norris Kyle  
Marianne Fritsch Lauer  
Teresa O'Connell LeCompte  
Paula O'Brien Litman  
Martha McNicholas Lowry  
Patricia Leonard Lowry  
Joan McGarry  
Janet McNicholas  
Patricia Maloney Miller  
Mary Lou Morande  
Mary Kay Davy Mulvaney, PhD  
Mary Ellen Madden Naliwajko



Nancy Nellis  
Nancy Knipper Nuzbach  
MaryLee Pakieser  
Stephanie L. Ross, Esq.  
Mary Hawkinson Roth  
Mary Beth Schmidt Ryan  
Rosemary Small  
Nancy Zibrida Sundstedt  
Mary Beth Woods Vihon  
Joanne Walsh

**McAuley Believer**

Patricia Colomb Biggs  
Judy Blake  
Jamie Brown  
Martha Haggerty Christy  
Nancy Costello  
Norine McCahill Cunningham  
Susan Curtis-Sullivan  
Jacqueline Graham Davies  
Patricia O'Donnell Doherty  
Nancy Barr Dowd  
Patricia Doyle  
Mary Ann Wilson Dunkin  
Donna Maher Dwyer

Ellen Gorman Ferring  
Maureen O'Sullivan Fitzgerald  
Rose Franceschini  
Denise Dwyer Gaffney  
Peggy Fleming Gannon  
Kathryn Shanahan Gentile  
Kathleen Kearney Graham  
Beth White Graney  
Patricia Fagan Griffin  
Katherine Donnelly Gudyka  
Joanne Haas Hebding,  
RPSGT, RST, CSE  
Mary James  
Loretta Patzelt Kargol  
Donna LeBeau  
Sharon Morrin Lessman  
Rita Nash McGuire  
Mary Beth Russell McNamara  
Julia Conroy Mikulich  
Mary Barbara Thiese Murphy  
Kathleen Jean Murray  
Mary Lee Moran Norris  
Lisa O'Brien  
Geraldine O'Connor

Linda Roche O'Reilly  
Nancy Allen Parrent  
Mary Brooks Pierce  
Geraldyn Eberhardt Prokop  
Mary Jo McCarthy Quish  
Corinne Raber-McGarigle  
Susan Sugrue Reed  
Cathy Arneberg Reynolds  
Carol Breitzke Schmall  
Naomi Hornick Schuster  
Rosemary Durkin Snyder  
Elizabeth Herlihy Stanis  
Michelle O'Connor Stasko  
Lee Owen Stern  
Carol Arnold Sullivan  
Elinor Schmid Sullivan  
Helen Cahill Sullivan  
Linda White Tyrrell  
Carla King Vesper  
Donna Sebek Wamsley

**CLASS OF 1970**

**Frances Xavier Warde Benefactor**  
Terry Magee Jaspers

**Circle of Mercy**

Julia LaDouceur Kubik  
Carol Millerick Nick

**McAuley Supporter**

Cathy Fitzgerald  
Kathleen Phelan Lipinski  
Pamela Goy MacLeod  
Kim Scully Moore  
Carol Noetzel, MD  
Janine Foy Poelstra  
Cynthia Stach-Pearman  
Janice Kadlec Stanley  
Betsy Sukowicz, PhD  
Nancy Tauchman  
Gaida Visockis  
Deirdre M. Whalen

**McAuley Believer**

Ginger Sebek Andrews  
Anonymous  
Caron Coughlan Bettenhausen  
Margaret Scanlan Brown  
Mary Ann Smithwick Byrnes  
Patrice Carey Fries  
Barbara Johaneck Gfesser  
Nancy Needham Leyden  
Donna Kiely Vodraska





**CLASS OF 1971**

**Frances Xavier Warde Benefactor**

Tom and Ellen (Danaher) Tully

**Circle of Mercy**

Martha and James Doherty  
Brian and Kathleen (Desmond) Short

**McAuley Supporter**

Monica Burmeister  
Roseanne Garavan-Oskielunas  
Caron Cronin Green  
Barbara A. Koss, CTC  
Janice Pawlak Neff  
Christina O'Connor, DDS  
Sally Battaglia Quinn  
Kathy Sullivan

**McAuley Believer**

Diane Canavan Carbone  
Ann Duhig Liston  
Susan M. Lorenz  
Babette Davis Meiners  
Catherine Hawkins Rose  
Marguerite Rolla Stlaske  
Lorraine Cummings Symonanis

**CLASS OF 1972**

**Frances Xavier Warde Benefactor**

Christie Gallagher Sever

**Agatha O'Brien Benefactor**

Rob and Kim (Febel) Figliulo

**Circle of Mercy**

Cheryl Quinlan  
Diane Twickler Wendel

**McAuley Sponsor**

Laurel Azzarello McGrath  
Patricia Moriarty Murray

**McAuley Supporter**

Carol Sheahan Burke  
Patricia M. Fishman, MD  
Rita Fitzgibbons Fox  
Gail Galante-Iovinelli  
Sheila Gallagher McInerney  
Deborah Klun Sharbak  
Nancy Ilg Shepherd  
Patricia Memmesheimer Singler  
Mary Ellen Laughlin Wirtz

**McAuley Believer**

Colleen Sullivan Brosnan  
Mary Therese McNicholas Galka  
Lorraine Hall-Harder  
Maureen Coleman Kelly  
Mary Uvodich Madsen  
Maureen Breakey O'Donnell  
Therese Neylon Perschke  
Denise Rowan Van Boldrik  
Susan Doody Wade  
Marianne Walsh

**CLASS OF 1973**

**Frances Xavier Warde Benefactor**

William J. and Anne (Edwards) Cotter  
Jane A. Ehrenstrom

**Agatha O'Brien Benefactor**

Mary Ellen Moriarty  
Francie Murphy  
Susan Scully Schultz

**Circle of Mercy**

Nancy Cunningham Benacci  
Mary Kay Loughlin Brown  
Nancy Claussen Carroll  
Jane Gately  
Janet Sokol Lombard  
Nancy Pierce  
Nadine Martello Shepard

**McAuley Sponsor**

In honor of Sister Mary Christian  
Eileen Diggins-Chapman  
Ann Marie Walsh Reed  
Cecilia McIntosh Thunander

**McAuley Supporter**

Cathy Leahy Bedell  
J. A. Burns  
Margaret Coleman Cahill  
Patti Clark  
Cathy Cunningham  
Laura Hickey Drohan

Cecelia Garavan Dygdon  
Mary Beth Gallagher Flaherty  
Tom and Patricia Goldrick  
Janet Laughlin Hogan  
Donna Espisito Hughes  
Colleen Tully Killham  
Mary Beth Sterk Lourie  
Patricia McShane-Parise  
Margaret Gutrich Mizera  
Nancy Michon Murray  
Maureen Murphy O'Connell  
Mary Desmond Patton  
Noreen Daly Reilly  
Joan Rowan  
Jeanne Tew Scanlan  
Mary Beth Casey Smith  
Maureen Sweeney  
Michele Sutton Yeadon

**McAuley Believer**

Janice Larson Anderson  
Judy Smith Benson  
Janet Triveri Bobb  
Carol Christensen Callahan  
Virginia George Costigan  
Rita Reinke DeCaneva

Elizabeth Mallory Deering  
Marcy Ryan Dignan  
Carole Slattery Dujka  
Karen Farley Eberhardt  
Susan Ebers  
Judy Skrypkun Felgenhauer  
Peggy Ban Foy  
Patricia Tortorello Gleason  
Gloria Green  
Margaret Rohan Hannigan  
Eleanor Cecchini Hyde  
Joyce Ricker Kenny  
Mary Louise Cullen Knoerzer  
Connie Bastian Lawlor  
Sue Sullivan Lenihan  
Cindy Sullivan Levy  
Donna Lichtenstein  
Denise Maziarz  
Patricia McNicholas  
Carolyn Messino  
Peggy Morrissey Murphy  
Sharon Nassin  
Carol Condon Neylon  
Susan Schuyler Nikolich  
Patti O'Neill-Buscemi  
Linda Siorek Patterson  
Maryanne Grasso Ruby  
Dawn Sadler  
Ginny Zic Schlomas  
Barbara Young Thompson  
Dr. Thaddene O'Connor Triplett  
Georgian Fitzgerald Wegrzyn  
Debra Westerhoff-Wlodarski  
Donna DeMatteo Wyness  
Patricia Young

**CLASS OF 1974**

**Frances Xavier Warde Benefactor**

Laurie Wysocki Fitzgerald  
Frances Robinson, Esq. and John Donohue





**McAuley Sponsor**

Donna M. Crowley, MD  
Jane O'Neil Quinlan

**McAuley Supporter**

Gail Collins Donahue  
Bette Goedert Duffy  
Maureen Linehan Howard  
Mariellen O'Donnell Kill  
Celeste Ebers Kralovec  
Joanne Rose McEldowney  
Diane Wiechern Rowan  
Kathleen Richards Ryding  
Gretchen Groesbeck Yearsich

**McAuley Believer**

Rita Browne-Kahle  
Nancy Burmeister  
Mary Alice Gill Flavin  
Dorothy Flynn  
Jane Ralph Regalado  
Kathleen Nassin Ryan

**CLASS OF 1975**

**Agatha O'Brien Benefactor**

Barbara Hamel  
Jerry and Mary (Acker)  
Klingenberg

**Circle of Mercy**

Dan and Mary Anne (Hennessy)  
Capron  
Sylvia Reed Curran  
Jane Maiberger Doherty  
Mary Ann Richards Patterson  
Patricia Williams Seeholzer  
Carla Zepeda Sullivan

**McAuley Sponsor**

Kathleen McKinney Donahue  
Rosemary Shea Pera  
Cathy Glancey Scully  
Kathy McKenzie Sparrow



**McAuley Supporter**

Noreen Burns  
Mary Campbell Carnevale  
Mary Pat Caddigan Coughlin  
Janet Disteldorf  
Mary Pat McGrath Dumke  
Mary Leahy Fey  
Laurel Sullivan Foody  
Nancy Cavanagh Foster  
Margaret Mann  
Judy Azzarello Millerick  
Sharon McLaughlin Mohseni  
Karen Kellogg Moran  
Janet Caserta O'Neil and  
John O'Neil

Mariann Rebenson Piano,  
RN, PhD, FAAN, FAHA  
Paula McGrath Poyar  
Mary Beth Moonan Ramos  
Beth Scheid  
Jean McNicholas Spiegelhalter  
Laurie Miller Stanton  
Mary Beth Delaplane Turek

**McAuley Believer**

Nancy Padden Barrett  
Barbara Gutrich Flynn  
Monica Dunne Fudacz  
Sharon Stapleton Glennon  
Cheryl Kaberna  
Beth Kelly  
Jean Mulcrone Koloseike  
Nina Munizzi Lesch  
Karen Kendrick Ortigara  
Barbara Dillon Reedy  
Mary Beth Hughes Walsh

**CLASS OF 1976**

**Frances Xavier Warde Benefactor**

Anne Bigane Wilson

**Circle of Mercy**

Debbie Morgan Essig  
Mary Pat Schumacher Rohan  
Susan McNicholas Rowan, DDS  
Diane Peterson Sarther, EdD

**McAuley Sponsor**

Mike and Peggy (Evans) Rourke  
Mary Jean Ryan

**McAuley Supporter**

JoAnn Foertsch Altenbach  
Amy Sereda Bayer  
Patricia Mea Bleck  
Mary Beth Cullen  
Katie Reynolds DaLuga  
Mary Beth Eichhorn  
Georgina Byrnes Griffin

Marita Kevin Mayer  
Carol Miernicki  
Mary Clare Brosnan O'Grady  
Nancy S. Scheidt  
Patricia Quinlan Schuh  
Denise Fleming Toussaint

**McAuley Believer**

Patricia Byrne  
Mary Donna Finn Caffrey  
Kathleen Duffy  
Judy Oldenstedt Huguelet  
Anne Dalton Knibbs  
Kathy Gremley Leahy  
Mary Cummings Mackey  
Mary Sweeney  
Karen Alfirevic Walker  
Cindy Grahovec Wirtz  
Mary Brennan Yerkes

**CLASS OF 1977**

**Frances Xavier Warde Benefactor**

Maureen Mullarkey Miller

**Circle of Mercy**

Mimi Napleton Collins  
Kathleen Monahan Connor  
Bernadette Gniadecki, DO  
Janet Stifter

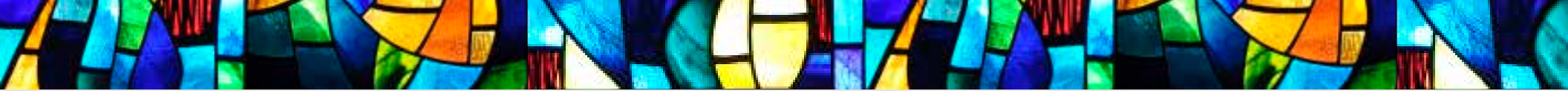
**McAuley Sponsor**

Barbara C. Cahill  
Catherine Moriarty Moloney  
Margaret Mullen Naughton  
Elizabeth Brett Pufunt  
Lisa Pawelski Rollheiser

**McAuley Supporter**

Terri Connor Brankin  
Ginny Eck Gallagher  
John and Jean (Powell) Geary  
Sheila Walsh Lehr  
Colleen Dargan Miller  
Enza D'Amico Piech  
Elisabeth McNamara Reed  
Christy Olofsson Smith





**McAuley Believer**

HKatie Phillips Carey  
Ginny McGann  
Debbie Ryan  
Kitty O'Brien Ryan

**CLASS OF 1978**

**Agatha O'Brien Benefactor**

Kate Bigane Larson

**Circle of Mercy**

Terri Gorman Danko  
Kathy McIntyre

**McAuley Sponsor**

Janice McGuire Biel  
Catherine Pierce Kelly  
Mary T. Gozder Musgrave

**McAuley Supporter**

Colleen Mannix Devine  
Nancy Desmond Donatelli  
Sally Draker Hart  
Mary Ann Doherty Hoey  
State Rep. Fran Hurley  
Tammie Finn Jones  
Ann Gallagher Miller  
Sharon C. Perelman, DDS  
Mary R. Phillips  
Anne LaVoie Sammons  
Jennifer Wegrzyn Usher  
Mary Lu Andrasco Wasniewski

**McAuley Believer**

Julie Murray Allen  
Loretta Dwyer Balsam  
Mary Martinat Baranowski  
Lori Chirillo Barone  
Karen Kushibab Bielski  
Marcy Brennan Binion  
Gina Zito Bracken  
Maryan Carroll  
Mary Henry Carroll  
Jean Kramer Cisciato



Nancy Craig Clark  
Angela Mannion Collins  
Joanne Weis Cooney  
Joanne Cullina  
Margaret Wollenberg Delaplane  
Julie Venkus Dobryman  
Diane Pieroth Donnelly  
Diane Dudak Ducett  
Kathleen Fassl  
Jacqueline McGing Filippone  
Lynn McGoldrick Franger  
Maria Gladziszewski  
Carole Sands Grunauer  
Laurie Roache Jakubczak  
Kathy Houlihan Janke  
Susan Lippner Jares  
Mary McKeague Jarka  
Donna Kampner-Simon  
Anne Brixie Kokoris  
Jan Pinotti Kuehn  
Ann Garrity McCartin  
Bernadette Boyce McMahon  
Lorraine Murphy Miller  
Mary Liz Ready Mills  
Catherine Spencer Moran

Ann Connolly O'Connor  
Kim Linkenheld O'Malley  
Eileen Fahey Puchalski  
Jane Randolph  
Margaret Cullen Regan, OD  
Janet McDermott Revane  
Diane Rosner  
Colleen Ryan-Ryan  
Ann Cleary Santino  
Lynn Sapp  
Jennifer D'Angelo Scavone  
Margaret Schomburg  
Andrea Balsan Sekula  
Joan Randolph Senne  
Rita Hughes Shanahan  
Maureen Shinners  
Sandy Haworth South  
Rose Cannon Ward  
Suzanne Morgan Ward  
and Tim Ward  
Colleen Wright

Colette Slattery Whalen  
Adriane Adomaitis Willig  
Liz Young Mills  
Joan Regan Zigulich and  
John Zigulich  
Barbara Flynn Zwickl

**CLASS OF 1979**

**Circle of Mercy**

Kerry Shannon Byrne  
Dianne M. Fleming  
Mary J. Foley

**McAuley Sponsor**

Sheila Bigane Bauschelt  
Carolyn Duffy Fetzer

**McAuley Supporter**

Marguerite McIntyre Crane  
Patti Monahan Diana  
Ann Beigelbeck Engelmann  
Sue Brett Enright

Karen Dybas Lambert  
Marianne Rowan Leslie  
Sheila Kilroe McGinnis  
Donna Cheval Modaff  
Carol Murphy Moloney  
Terese Strauss Smits  
Patricia Eck Witte

**McAuley Believer**

Kathy Lombard Byars  
Kathleen Egan Jirasek  
Susan Murphy McKibbin

**CLASS OF 1980**

**Circle of Mercy**

Jennifer Lim, MD  
Susan Slezak Ludwig  
Patricia Nielsen O'Donnell  
Mary Oksas  
Michelle Sheehy

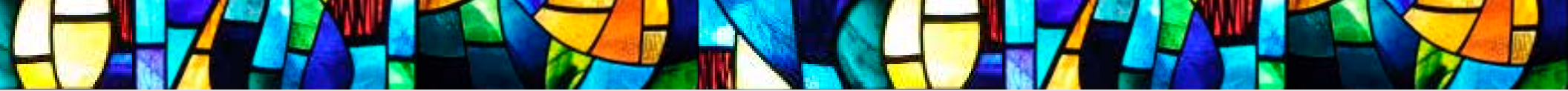
**McAuley Supporter**

Rosellen Schwaller Brannigan  
Kathleen McNicholas Daniels  
Amie J. Flynn, Esq.  
Jeanne LaVoie  
Mary Richards Lawrence  
Raney Scibor Luthin  
Lynn Malooy  
Joan O'Neil  
Katie McGovern Philpott  
Jeanne Kowal Smith

**McAuley Believer**

Marlene Mohan Balling  
Elaine Edwards Kindt  
Teri Beran Kulat  
Karen Andrasco Lang  
Rosemary Ready Logue  
Meg Clarke Rooney  
Karen Mitrack Sullivan





**CLASS OF 1981**

**Circle of Mercy**

Carol Martinelli Bartucci  
Maureen McDonough Curley  
Lisa Rooney Doody  
Kelly Reynolds Scully

**McAuley Sponsor**

Eileen McIntyre Foley  
Cecily Ahern Millerick  
Carol Zordani-Enright

**McAuley Supporter**

Julie Kerwin Lawler  
Gina Groesbeck Manley  
Maureen Gorman Scanlon  
Colleen Flaherty Shea  
Mary Fran Perkins Stratis

**McAuley Believer**

Yvonne Little Biszewski  
Mary Lynn Bauer Duffy  
Angela Gee  
Maureen Nassin Hicks  
Karen McCabe  
Mary McIlvain

Lorri Johnson Nagle  
Jean Duffy Pomorski  
Colleen Reynolds  
Barb Cosgrove Zediker

**CLASS OF 1982**

**Frances Xavier Warde Benefactor**

Kate Shannon Boyle

**Circle of Mercy**

Meg Bigane  
Helen Flanagan  
Carolyn Rossi Kostelny  
Renee Popovits-Long  
Ellie Brett Ryan  
Mary Beth Sheehan

**McAuley Sponsor**

Kim Joyce Geraghty  
Amy Cronin Marciniak  
Barbara Meyer

**McAuley Supporter**

Laura Ade Brennan  
Vicki Zarod Brennan  
Karen A. Casey-Loftus  
Ann Bridgman Hartnett

Christine Malone Hurley  
Nancy Larson Lynch  
Betty Marchese Kosky-Harn  
Angela LaBarbera Mehalek  
Kimberly Carlson Patton  
Mariyana Spyropoulos

**McAuley Believer**

Robin Rodi Creevy  
Katie Cullen-Conway  
Suzette Glasch Doligale  
Kate O'Malley  
Eileen Breske Pavlik  
Julie Elsen Turcich

**CLASS OF 1983**

**Agatha O'Brien Benefactor**

Joe and Sheila (McNamara)  
Bettinardi

**Circle of Mercy**

Anne Harney  
Nancy Schwaller

**McAuley Sponsor**

Susan Broniarczyk, PhD  
Margaret Smith  
Sheila Dyra Zak

**McAuley Supporter**

Anne Michelle Brett  
Joan Dempsey Garey-Rogers  
Susan Salem Euritt  
Nancy Kurow Flaherty  
Mary Walsh Freeman  
Liz Doody Gorman  
Martha Kadas  
Kimberly Kuncl, MD  
Christine Federinko Lee  
Donna Miller Marasco  
Sharon Morey  
Colleen McIntyre Murney  
Rita O'Riordan Murphy  
Lucy McGinty Podlesny  
Peggy Kearney Schander

Kimberly Quinlan Stepanek  
Maureen Weis Sweeney  
Elizabeth Thibeau  
Susan Sicher Walsh

**McAuley Believer**

Mary Boylan Baker  
Jamie Burgess Bentley  
Colleen Curry Blouin  
Therese Martin Boyce  
Gina Ryan Brigham  
Elizabeth Burke  
Kimberly Price Butler  
Melody Byrd  
Terry Harney Clancy  
Onjalique Clark

Debra Wantroba Coan  
Maureen Archer Collins  
Jennifer Monahan Cronin  
Pamela Kissel Fifer  
Margaret Foley  
Jane Ryan Gavin  
Rita Jean Eaheart Gramm  
Tammy Herring, DVM  
Laura Rowley Hilker  
Jane Jablonski  
Nora Hawken Kilby  
Karen Looney Konow  
Delores Tokic Kresic  
Meggan Trant Kujawa  
Linda Jordan Magee  
Colette O'Boyle McLaughlin  
Mary Beth Paliakas Mulcahey  
Kim Vasek Murawski  
Kathy Saracini Novak  
Susan Mikolajczak O'Donnell  
Mary Helsdingen Ostrem  
Trish Caldwell O'Sullivan  
Susan Morgan Reynolds  
Jeanne Rowan-Hickey  
Mary Keough Sheehan  
Dorie Filpovich Smith  
Amy Sprague Walch

**CLASS OF 1984**

**Circle of Mercy**

Mary Ellen Carroll Clifford/  
Clifford Family  
Linda Balchunas Jandacek  
Nancy O'Brien Kane  
Susan Chylla Lindquist

**McAuley Sponsor**

Jodi Farrell  
Julie Morrison Humphreys  
Clare Geraghty Murphy

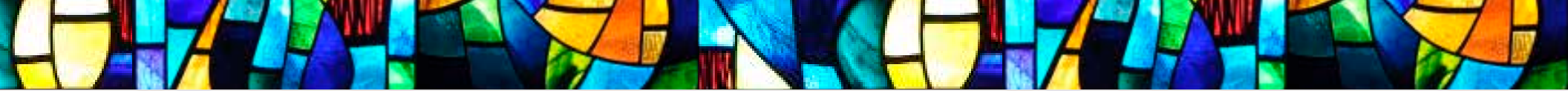
**McAuley Supporter**

Laura McGee Denlinger  
Colleen Willner Konecki  
Claudine Malik  
Maureen Buckley Norman  
Mary Kay Mulcahy O'Connell  
Julie Bigane Pollard  
Molly Bridgman Vandeveld  
Colleen Crean Wolfe

**McAuley Believer**

Donna O'Flaherty Borse  
Rosemary Harney  
Jennie Duffy Kelly  
Elizabeth Patko McCarthy





Bridget Gainer  
 Kelly Shanahan McNamara  
 Kerry Dempsey Mixan  
 Moira Scully Papp  
 Jennifer Joyce Smykowski  
 Colleen Collins Swenson  
 Michelle Dinneen White

**McAuley Believer**

Julie Fenlon Delfinado  
 Kate A. Kelly  
 Cathleen Keaty O'Grady  
 Julianne Solon-Schuberth  
 Mary Ellen Condon Staelgraeve  
 Clare McAuliffe Staudacher

**CLASS OF 1987**

**Circle of Mercy**

Pamela Collins Keller  
 Maura Clarke Saas

**McAuley Sponsor**

Julie Scholvin Crumley  
 Barbara Johnson Nelligan

**McAuley Supporter**

Carolyn Peterson Alifantis  
 Ann Kennedy Boyle  
 Kathleen King Buck  
 Kristen Connolly Cahill  
 Margaret Carey  
 Noreen P. Connolly  
 Kate Brett Coughlin  
 Christine Staszczuk Lewandowski  
 Kathleen Culloton Lowery  
 Cristine Marik  
 Sheila Lyne Mastandrea  
 Judith McAuliffe  
 Norah Condon O'Malley  
 Felicia Stanczak  
 Kathy O'Sullivan Ward

**McAuley Believer**

Sharon McIlvain  
 Joanne O'Malley  
 Leah Kean Ostry  
 Joanne McNamara Rahn

**CLASS OF 1988**

**McAuley Sponsor**

Carrie Amann Wujek

**McAuley Supporter**

Beth Reidy Amado  
 Kathleen Kopecky Davine  
 Terri Hurley Englehart  
 Colleen Fitzgerald, MD  
 Anne Foley Doligale  
 Laura Jurek Howley  
 Lisa LaRoche-Sczurek  
 Mary McNulty Lausch  
 Katherine O'Neill McShane  
 Ellen Monson Navarrete  
 Sharon Owens  
 Monica Goedert Sheerin

**McAuley Believer**

Carrie Mangan Aleksiun  
 Leslie O'Hara Ashley  
 Therese O'Keefe Badali  
 Amy Budil Bracewell  
 Catherine Cotter Brady  
 Christina Brady  
 Sue Fitzpatrick Caraher  
 Jennifer Cariola  
 Mary Mucker Caruso  
 Lori Callahan Cassidy  
 Gia Guastella Cipriani  
 Stacey Syrigas Collaros  
 Catherine O'Donnell Conjar  
 Ellen Conroy  
 Colleen Corbett Canavan  
 Kimberly Hall Cunningham  
 Lisa Luchsinger Czelatdko  
 Mary DiCarlo  
 Cherie Rascop Dillon  
 Kimberly Dryier  
 Aishling Duffy-Reilly  
 Mary T. Dwyer  
 Jennifer Epich  
 Joann Fakhouri  
 Erin Wallace Finnegan  
 Nancy Beach Flannigan  
 Nora Gainer  
 Teri Gillerlain  
 Jennifer Costello Greene  
 Amy VanderPloeg Gurosh  
 Jessica Sunquist Hanson  
 Erin Harrigan-Schober  
 Marianne Albovias Hayes  
 Laura TenBroeck Hepburn  
 Katie Hobson  
 Ann Howicz  
 Katherine Hughes  
 Jo Ellyn Arvesen Kelly  
 Eileen Burns Kicmal  
 Jane O'Connell Kokaska



**CLASS OF 1985**

**Circle of Mercy**

Anonymous

**McAuley Sponsor**

Peggy Culloton Coghlan  
 Lisa Goelz Messaglia

**McAuley Supporter**

Carine Towers Girardin  
 Diane Callaghan Husar  
 Theresa Kristopaitis, MD  
 Patricia Reilly  
 Gerianne Spagnoli Tilkes

**McAuley Believer**

Terese McKenna Cleary  
 Jane Springer Devine  
 Janet McCabe  
 Janice M. Mitchell

Susan Sieja

Trish Biondo Soltys

**CLASS OF 1986**

**Circle of Mercy**

Carey Temple Harrington  
 Julie Moody Kemnitz  
 Dawn Jenkinson McKenna  
 Kathryn M. Morrissey  
 Kecia Perkins  
 Mary Carol Witry  
 Mary Plockelman Young

**McAuley Sponsor**

Vania Montero Wit

**McAuley Supporter**

Kathleen Doyle, PhD  
 Christine Canavan Duffy





Jennifer Kozak  
 Soraya Katoozian Kraszczyk  
 Tammy Pochopien Kummerer  
 Therese Murphy Larkin  
 Patricia O'Sullivan Lavin  
 Celine Lenehan Bucci  
 Julie Armstrong Levato  
 Teresa Boland Loch  
 Julie Sheahan Lundy  
 Beth Daly Lynch  
 Jennifer Healy Mahanes  
 Ann Marie McMillan Manos  
 Susan McGlynn  
 Christine McGovern  
 Bernadette McGuire  
 Bridget McIlvain  
 Karleen McNeal, MD  
 Mary Ellen Meuris  
 Donna Ceglarski Mori  
 Margaret Mulligan  
 Carol Jeanne O'Keefe  
 Michelle Walsh Ozanne  
 Laurie Palmlblad  
 Eileen Hughes Palmer  
 Bridget Podracky  
 Julie Peterson Rami  
 Dena Georges Reilly  
 Cheryl Buckendahl Schuldt  
 Ann Marie Kordeck Riordan, EdD  
 Suzanne Czubernat Rudsinski  
 Breda Ryan Rugai  
 Carolyn Keegan Ryan  
 Tracy Rozak Salvino  
 Debbie Salzman  
 Sherri Kiely Schatz  
 Melissa Adams Schlicker  
 Margaret Sekula  
 Kathleen Sears Sheeran  
 Kathleen Skalitzky Shields  
 Kristin Schultz Short  
 Marifran Smith



Eleni Paxinos Spyropoulos  
 Jill Swick  
 Cynthia Stifter Syslo  
 Christine Kowal Teed  
 Laura Tolan  
 Lynn Bickham VonBruchheuser  
 Pat Williamson Vopicka  
 Rachel Oboikovitz Wapson  
 Meghan Hallagan Watts  
 Bonnie Jacoby Wright

**CLASS OF 1989**

**Frances Xavier Warde Benefactor**  
 Megan Curran Hurless

**McAuley Supporter**  
 Miriam Carroll Alfano  
 Tristan N. Karnezis Angus  
 Amy O'Connell Bonner  
 Stacy Zawaski Sheerin  
 Kathleen Ahearn Vossenber

**McAuley Believer**  
 Jennifer Restagno Baniewicz  
 Susan Wassberg Cholico  
 Colleen Hunter Czaczczonek  
 Michele Myles Dikeman  
 Carolyn Burns Dine

Ellen Fearon  
 Jacqueline Freitag  
 Elsa Luera Meza  
 Laura Jilek Motel  
 Kristen Cavallone Snyder

**CLASS OF 1990**

**Circle of Mercy**  
 Traci Gearty Breen  
 Tracy Pandell Van Hoy

**McAuley Supporter**  
 Coleen Temple Barkmeier  
 Angela Nirchi Berger  
 Debbie Doodly Furlong  
 Shayne Swiecicki Kennedy

**McAuley Believer**  
 Gina Micelli Chigaros  
 Megan Dempsey Haggerty  
 Megan Kennelly Johanet  
 Colleen Sullivan O'Hara

**CLASS OF 1991**

**Circle of Mercy**  
 Kristi Flood

**McAuley Supporter**  
 Kimberly Evans Craig  
 Colleen Coogan Curley  
 Eva Hunt, EdD  
 Amy Durkin O'Connor  
 Deana Evans Segreti  
 Helen Kubey Tovey

**McAuley Believer**  
 Katie Carmody Hanley  
 Kelly Forde Moscicki  
 Karen Ospalski

**CLASS OF 1992**

**McAuley Sponsor**  
 Jennifer Johnston

**McAuley Supporter**  
 Danielle Collura Austry  
 Julie Corley Cosme  
 Angela Binkowski Dugan  
 Katie Cushing Durkin  
 Jennifer Connolly Harmening  
 Bridget Butler Martin  
 Kelly Rees Petrowski  
 Suzy Curran Sullivan

**McAuley Believer**  
 Kerry Kennedy Esselman  
 Emma Kean  
 Jennifer LaVan Kukulka  
 Kathleen Pierucci Lubke

**CLASS OF 1993**

**Circle of Mercy**  
 Meghan McGriff Hynes

**McAuley Supporter**  
 Jennifer Ligda Busk  
 Molly Schlitz Condon  
 Leigh Regan DuMais  
 Michelle Gonzalez  
 Jean Riemersma Hayes  
 Jill Capuano Kotas  
 Kathleen Madden Maloney

Julie Wogan McKee  
 Katie Owens Mulcahy  
 Jammee Post  
 Karen Murphy Ramirez

**McAuley Believer**  
 Susan Kozel Ahern  
 Beth Heitner Allott  
 Andrea Anders  
 Heidi Siefert Anleitner  
 Katie Cismoski Baldwin  
 Katie Crotty Brousseau  
 Mary Dornig Craig  
 Eileen Cahill Saam  
 Lisa Caldarone Cisek  
 Adrienne Coleman  
 Mary Conroy Barry  
 Catherine Dixon  
 Veronica Aranda Duenas  
 Terese Zavadis Enright  
 Amanda Haas Gaida  
 Melissa Bravi Garretson  
 Lizzy Sappenfield Gilgenberg  
 Alecia Hanton Giunta  
 Elece Glynn Griffin  
 Annemarie Jilek Guinane  
 Noreen Butler Harrington  
 Kristin Stringham Heidorn





JoEllyn Augustine Paolicchi  
 Shannon Kennelly Quaid  
 Jean Gerwig Rafacz  
 Michelle Reich  
 Mary Walsh Riordan  
 Amber Ryan  
 Jennifer Godwin Sagrati  
 Jennifer Sniezewski Schmitt  
 Susan McNicholas Schultz  
 Denise Sullivan Scott  
 Christine Keane Sharp  
 Carrie Brne Stolfi  
 Nicole Minervini Swallow  
 Maria Alexander Taylor  
 Heather Granger Tkach  
 Denise Tomasek  
 Nancy Trant  
 Kathleen Gibbons Vargas  
 Amie Biros Wharff  
 Colleen White  
 Tracie O'Brien Yednock  
 Katharine Ham Ziel

Susan Helsdingen  
 Tiffany Johnson  
 Jennifer Novak Kelly  
 Joey Marie Basile Kelly  
 Kathy Gallagher Kubin  
 Christine Lezon Kwasiborski  
 Mary Jo Feigl Lamb  
 Ingrida Latoza  
 Kathleen Green Lyons  
 Karen Lakawitch McDonagh  
 Susan Gallagher McKee  
 Kristen Meany Conway  
 Nicole Lachat Mendez  
 Colleen Moster Barrins  
 Jennifer Dresden Murphy  
 Janet Oleksy  
 Lea Kalebich O'Neill  
 Julie Kilcoyne Owens  
 Melissa Paglia

**CLASS OF 1994**  
**Frances Xavier Warde Benefactor**  
 Jenny Costello Fortner  
**Circle of Mercy**  
 Sarah Curran Sennett  
**McAuley Sponsor**  
 Suzanne Emerson Fedea  
**McAuley Supporter**  
 Rosanne Kason Ashton  
 Jennifer Chmela Babbington  
 Karen Moloney Devlin  
 Elizabeth Parker Fossey  
 Matt and Cara (Dunne) O'Shea  
 Virginia (Ginny) Schumann  
 Petrancosta  
 Stacy Phelps, DC  
 Claire Sheahan

Lisa Franco Walent  
 Colleen Quinlan White  
**McAuley Believer**  
 Joy Bivins  
 Kellyn Doyle Coakley  
 Victoria DiFilippo Jacklin

**CLASS OF 1995**  
**Circle of Mercy**  
 Susana Guzman Dominguez  
**McAuley Sponsor**  
 Kelly O'Connor Heneghan  
 Libby Linares Herrera  
 Julie Fitzgibbons Leichtman  
**McAuley Supporter**  
 Cara Koch Benes  
 Katie McNally Fitzmaurice  
 Josie Coffey Singler  
**McAuley Believer**  
 Patrisha O'Neill Johnson  
 Cynthia Aglinskas Roman  
 Tricia Rooney



**CLASS OF 1996**  
**McAuley Sponsor**  
 Patrick and Sara (Phillips) McGann  
 Ellen Gergits Metz  
**McAuley Supporter**  
 Caroline Donovan Anderson  
 Mary C. Gainer, MD  
 Christina E. Rys Kmiec  
 Jennifer Gillespie Kribs  
 Katie McAlinden  
 Sandra Miller  
 Erin McGrath Mueller  
**McAuley Believer**  
 Jennifer A. Palomo

**CLASS OF 1997**  
**McAuley Sponsor**  
 Kathleen Moody Malone  
**McAuley Supporter**  
 Brooke Standring Ariens  
 Renee Nash Bizzieri  
 Renee Clarizio Cahill  
 Alisia M. Eckert

Maura King Finn  
 Kelly O'Connell Luzzo  
 Taryn J. McKenna  
 Elizabeth Schroeder  
 Jeanine Solinski  
**McAuley Believer**  
 Rachelle Felix-Blackmon  
 Gina Doyle Loizzo  
 Maria Ramirez  
 Lane Barham Vail

**CLASS OF 1998**  
**Circle of Mercy**  
 Anne Czarnecki  
**McAuley Sponsor**  
 Lauren B. Mikos  
**McAuley Supporter**  
 Alessa Altenbach Brennan  
 Maura Carroll  
 Elaine McKian Cowen  
 Erin Halloran  
 Mary Claire Hall Kovacic  
 Elizabeth Manna  
 Caroline Blazowski Matkowich  
 Julie O'Sullivan  
 Elizabeth Sheridan  
**McAuley Believer**  
 Patti Arvesen  
 Ann Hughes Baud  
 Jennifer Bazydlo  
 Cheryl Belcik  
 Lisa Parisi Blazevic  
 Maureen Bowen  
 Jordan Stanker Brandl  
 Danielle Dudkowski Burt  
 Jennifer Callahan  
 Mary Pat Deiters Carr  
 Anita Chlipala  
 Mary C. Connolly  
 Kelly Eckroth Connolly



J. J. Budewitz Cunningham  
 Katie Doyle Deane  
 Nicole Dietel  
 Melanie Schaller Doherty  
 Mary Fitzpatrick Duleba  
 Carolyn O'Connor Dunleavy  
 Therese Walaszek Eagan  
 Season Harrison Epps  
 Meaghan Day Fitzpatrick  
 Eileen Jilek Flanagan  
 Nora Gill  
 Lisa Gowder  
 Lauren Fitzgibbon Gute  
 Kelly Haggerty  
 Jennifer Cronin Hanes  
 Cara Condon Hanrahan  
 Kimberly Kelly Heinlen  
 Carilyn Kempf Hoalt  
 Kristin Hogan  
 Heather A. Hughes  
 Alicia Jablonski  
 Colleen Joyce

Sheila Crotty Kagan  
 Amy Spiga Kaskie  
 Angela Krol  
 Erika Langle Roditis  
 Lauren Lanigan Fay  
 Courtney Miller Lee  
 Clancy Leonard  
 Liz Lett Woodward  
 Katherine E. Linehan  
 Catherine Hurley Liston  
 Kerry Ryan Lynch  
 Nora O'Sullivan MacKinnon  
 Katie Magee  
 Erin O'Hara Maso  
 Beanie McCarthy McClelland  
 Carla M. McCullough  
 Shannon Scott Morber  
 Maureen Manzke Morrissey  
 Courtney Hogan Muldoon  
 Ann Marie Murphy  
 Cathaleen Barham Novak  
 Gaelen Bell Orbon  
 Kate Madden Paluszek  
 Laura Molyneaux Pannell  
 Erica Evens Paskert  
 Nicole Kacor Pasquinelli  
 Megan Martin Pennington  
 Elyse Lyons Pfandler  
 Mary E. Reynolds  
 Patty Dahl Rojek  
 Melissa Rooney  
 Krista Anderson Ryan  
 Jacalyn Mondry Sandusky  
 Gina Scholtes Sariri  
 Roseanne Schapiro  
 Janine Schaults  
 Katie Hughes Schroeder  
 Julie A Harris Schultz  
 Jennifer Scriven Collins  
 Dionnea Seals

Nora K. Sheahan  
 Elizabeth Flisak Smith  
 Katie Fitzpatrick Sorich  
 Rose Sprinkle  
 Despina Karnavas Spyridakis  
 Alison Szafranski Stock  
 Megan Schroeder Szczesniak  
 Katherine O'Brien Thompson  
 Tyonne Crump Tolley  
 Stacy Toms  
 Amy Ukockis Warren  
 Jennifer Fraser Valdez  
 Elizabeth Hughes Waddick  
 Jean Walthall  
 Aimee Warshall  
 Sara Perfetti Whelton  
 Sarah Kolosh Wiegman  
 Katherine Wirtz Guerrero  
 Marlene Mendiola Zoob

**CLASS OF 1999**

**McAuley Supporter**  
 Meg Griffin Gardner  
 Judith McGovern Hynek  
 Erin Malloy  
 Laura Ortega

**McAuley Believer**  
 Diana Burban  
 Maggie McGrail

**CLASS OF 2000**

**McAuley Supporter**  
 Erin McDermott Goldrick  
 Rachel Franker Groth  
 Shannon Dunne Harvey  
 Sarah E Powers  
 Christine K. Ratajczak  
 Angela Stepancic  
 Kiara Moore Tierney



**McAuley Believer**

Carlin Glennon  
 Moira Hughes  
 Jill Harrigan McManus  
 Denise Mitsdarffer Pimpinella  
 Laurie Riesbeck Risner

**CLASS OF 2001**

**McAuley Believer**  
 Molly L. O'Connell Hollock  
 Kelly M. Kolton  
 Anne Larmon Ringrose

**CLASS OF 2002**

**Circle of Mercy**  
 Meaghan Sullivan

**McAuley Supporter**  
 Megan Poelstra Bacarella  
 Nora Capron Gifford  
 Melanie Rahman Thomas, MD

**McAuley Believer**  
 Jennifer Novosel Callahan  
 Nichole Hynes Carey

Caitlin M. Carroll  
 Sarah A. Gilligan  
 Jandi Kelly

**CLASS OF 2003**

**Circle of Mercy**  
 Eileen Boyce O'Reilly

**McAuley Supporter**  
 Madeline Wirtz Allan  
 Margaret Linnane  
 Kathleen Mixan  
 Katie Rudolph Savage  
 Jeannine Stupka

**McAuley Believer**  
 Laura Ramashauskas Brannigan  
 Mary Brennan  
 Amy Bruno  
 Colleen M. Byrne  
 Kacey Kelly Carey  
 Meghan Coleman  
 Brenda Fitzgerald Doyle  
 Moira McCowry Garza  
 Ashley Ellis Horvath  
 Erin Kelleher  
 Nora Lyons Lavin  
 Kara Roberts McKenna  
 Laura Milewski  
 Lauren Bozzi Miller  
 Beth Sebek Montgomery  
 Meghan Mulryan  
 Julia Neville  
 Anne Rohan O'Boyle  
 Megan Pawlak  
 Becky Moran Quijano  
 Meghan Cailin Quinn  
 Nora Hickey Rhein  
 Meredith Obiala Simpson  
 Carrie Williams Sturm  
 Mary Tuzik  
 Patricia Hurlley VanHuisen  
 Cindy Villagran





Barbara Stumpf Warszalek  
Ashley Whirity  
Jacqueline Petrosius Wilcox  
Morgan K Ingersoll  
Taylor Kedzior Zator

**CLASS OF 2004**

**McAuley Supporter**  
Jennifer Beeson Davis  
Megan O'Connell McFarlane  
Erin O'Brien Tapp

**McAuley Believer**  
Emily Doherty  
Elizabeth Singler

**CLASS OF 2005**

**Circle of Mercy**  
Mo Sullivan

**McAuley Sponsor**  
Colleen Kelly Moss

**McAuley Supporter**  
Kate Scully Krebsbach  
Maura Reilly  
Anna Bogdanowicz Suwada

**McAuley Believer**  
Marcy Farrell Doheny

**CLASS OF 2006**

**McAuley Sponsor**  
Carolyn Nevin

**McAuley Supporter**  
Theresa Lavelle Brainerd

**McAuley Believer**  
Anne Dixon Brown  
Jennifer Riemersma  
Christopher  
Elizabeth Droel  
Anne McEldowney  
Megan Hallaren Pelton  
Alyse Biszewski Rourke



**CLASS OF 2007**

**Circle of Mercy**  
Julia Carey

**McAuley Supporter**  
Erin Knightly  
Jane Wojtulewicz Vana  
Maura Moran Vaughan

**McAuley Believer**  
Kate Crane  
Kate McGrail

**CLASS OF 2008**

**McAuley Sponsor**  
Amy Maslar

**McAuley Supporter**  
Leah Durham  
Courtney Griffin  
Rosemary Maslanka  
Jizleth Rios  
Andrea Tragos Sargent  
Alicia Toussaint

**McAuley Believer**  
Jennifer Aguiar  
Sarah Anderson  
Erika Barrios  
Allison Battain  
Melissa Berg  
Sarah Berglind  
Claire Bowens  
Therese McCarthy Brendich  
Ellen Broad  
Michelle Bruno  
Kara Hastings Buckner  
Jennifer Burg  
Katherine Campos  
Elizabeth Chaps  
Coleen Clemens  
Megan Panella Corley  
Alexandra Creed  
Karien Dean  
Rose DeFrancesco  
Erin Doody  
Erielle Espina  
Tiara Alexander Eytcheson  
Kathryn Fasan  
Katherine Fearon  
Laura Bansley Fitzpatrick  
Sinead Forde  
Molly Gallagher  
Sheila Gavin  
Kristina Dziedzic Glavas  
Mary Glennon  
Mercedez Gonzalez  
Yesenia Gonzalez  
Erin Hallaren  
Briana Hart  
Mary Elizabeth Kochan Hawking  
Brianna Hayes  
Gabriela Vazquez Hearsch  
Brittanie Herrera  
Ellen McCarthy Hickey  
Caitlin Hickey-Wills

Ariel House  
Ashia Hunter  
Lauren James  
Jade Jaramillo  
Mikaela Joyce  
Kate Kelly  
Erin Kennedy  
Anali Khalil  
Patricia Kiedrow  
Frances Kobiernicki  
Kayla Kohler  
Tricia Love  
Kathleen Malloy  
Jordan McBride  
Meghan McCarthy  
Laura Kinahan McCartin  
Jacqueline McGivern  
Kristine McGury  
Cristina Medina  
Meghan Mullane  
Bernadette Muloski

Caitlin Murphy  
Meghan Nolan  
Katherine Norton  
Erin Obiala  
Courtney O'Brien  
Shannon Ready O'Neill  
Helen Padden, MD  
Sarah Parker  
Rosemarie Paruta  
Regina Perrow  
Jill Novosel Phelan  
Maureen Power  
Monica Prado  
Genevieve Prendergast  
Lindsay Raya  
Annabelle Reynolds  
Cecily Rodriguez  
Molly Rourke  
Mollie Rowan  
Megan Rowan  
Megan Schuch





Amanda Selke  
 Kaitlyn Sheehan  
 Kate O'Donnell Shelton  
 Carolyn Shotas  
 Victoria Simmons  
 Alexandra Stalionis  
 Amy Streit  
 Lauren Frost Stull  
 Katlyn Tracy  
 Meghan Troy  
 Katie Vorderer  
 Mattea Walsh  
 Megan Walsh  
 Anne Waugh  
 Erica Widlacki  
 Caitlin O'Connor Wollam  
 Kelly Wright

**CLASS OF 2009**

**McAuley Supporter**  
 Caitlin Gallagher

**McAuley Believer**  
 Annie Hurley Eisses  
 Grace Flaherty  
 Kathleen Kelly  
 Natalie Trynoha

**CLASS OF 2010**

**McAuley Supporter**  
 Nora Collins  
 Anne Dailidonis  
 Mary Kate Knightly

**McAuley Believer**  
 Ellen Carberry  
 Jamie Heavey  
 Katherine Murnane  
 Kelly Van Boldrik

**CLASS OF 2011**

**McAuley Supporter**  
 Margaret Fagan Eber  
 Katherine McCasland  
 Erin Duffy

**CLASS OF 2012**

**McAuley Believer**  
 Theresa Devine  
 Hannah Swenson Warren

**CLASS OF 2013**

**McAuley Supporter**  
 Christine Schmidt

**McAuley Believer**  
 Sarah Abbott  
 Samantha Beary  
 Carly Bettinardi  
 Patsy Boland  
 Emily Bowens  
 Maura Boyce  
 Audrey Brazel  
 Katlyn Broderick  
 Alexandria Bucon  
 Maureen Butler  
 Claire Carberry  
 Rachael Carrero  
 Kaitlyn Chavez  
 Kristine Childress  
 Kelly Clarke  
 Terese Cloonan  
 Abigail Coyle  
 Sarah Craig  
 Caitlin Cronin  
 Brenna Davila  
 Katie Diana  
 Nora Egan  
 Ceili Erickson  
 Mary Fahey  
 Grace Felmon



Bridget Fitzgerald  
 Clare Foertsch  
 Melissa Fox  
 Annie Galotta  
 Jacqueline Gavin  
 Mary Kate Glavas  
 Margaret Golon  
 Margaret Graney-Dolan  
 Erica Harris  
 Kelly Hayes  
 Krista Herrera  
 Clare Hickey  
 Cara Howard  
 Margaret Hurley  
 Bridget Hynes  
 Jane Kelly  
 Mary Kate Kilroy  
 Kristen Kleist  
 Michelle Konecki  
 Megan Malloy  
 Madeline Maloney

Emily Marousek  
 Lindsey McCormick  
 Kiley Mier  
 Katherine Mitchell  
 Mary Morris  
 Gianna O'Malley  
 Lauren Paluch  
 Allison Parker  
 Shana Pembroke  
 Molly Quinn  
 Aliya Rhodes  
 Ayanna Rhodes  
 Isela Rojas  
 Mary Romano  
 Shannon Rowan  
 Alyssa Siwek  
 Brenna Smith  
 Elisha Southern  
 Julie Stanton  
 Anne Stasaitis  
 Katie Sullivan

Mary Beth Sullivan  
 Christina Vogt  
 Sarah West  
 Margaret Whalen  
 Camryn Wheeler  
 Mairead Zigulich  
 Shannon Zofkie

**CLASS OF 2014**

**McAuley Supporter**  
 Margaret Scully

**McAuley Believer**  
 Alexandria Brown  
 Maggie Clifford  
 Paige Kennedy

**CLASS OF 2015**

**McAuley Supporter**  
 Jessica Pedroza  
 Molly Sommer

**CLASS OF 2016**

**McAuley Believer**  
 Annie Duffy

**CLASS OF 2017**

**McAuley Believer**  
 Yaitzell Noriega  
 Caitlin Zintak

**CLASS OF 2018**

**McAuley Supporter**  
 Casey Macander

**McAuley Believer**  
 Mary Kate Clifford  
 Maura Gribble  
 Emily LePrete  
 Margaret Millerick  
 Celia Palzkill

# Non-Alumnae Donors

## **Frances Xavier Warde Benefactor**

Anonymous  
 Arbella Insurance Group/John Donohue and Frances L. Robinson '74, Esq.  
 Big Shoulders Fund  
 Bigane Paving/Anne Bigane Wilson '76  
 Cotter Consulting Inc./Anne Edwards Cotter '73  
 Daniel P. Haerther Charitable Trust  
 Paul and Deborah Duggan  
 Fred J. Brunner Foundation  
 Helen Brach Foundation  
 Fran and Patricia Ann Houlihan  
 The Hughes Family  
 Irish Fellowship Educational and Cultural Foundation  
 Kavanaugh Family Foundation  
 Larry and Carrie Kelley  
 The Lazzara Family Foundation  
 Bruce Litt  
 The Lombard Company  
 Marquette Bank  
 Mazza Foundation  
 Owens Foundation/Julie Owens Burns '82  
 Ozinga Bros. Inc.  
 Mary Catherine Poland Trust  
 Mary Ellen Schwaller/  
 The Schwaller Family  
 Sisters of Mercy West Midwest Community  
 Tellabs Foundation  
 Walsh Foundation/Dan and Patty (Reynolds '65) Walsh

Wight & Company  
 John and Cheryle Wittert  
 WP & HB White Foundation  
 Frank Young and Anne Fisher Young

## **Agatha O'Brien Benefactor**

Bautista Memorial Scholarship Foundation  
 Mike and Monica Carey  
 Chicago Mercantile Exchange Foundation  
 Dr. Scholl Foundation  
 Sister Marie Fox, RSM  
 Richard E. Haggerty  
 Michael and Maura Macander  
 McAuley Mother's Club  
 The Napleton Family Foundation  
 Personal Consulting Services Intl  
 Michael and Julie Sheffieck

## **Circle of Mercy**

Dale E. Adams  
 Anonymous  
 Sister June Anselme, RSM  
 Barraco's Pizza  
 Beverly Bank/Wintrust Community Bank  
 Bigane Paving/Anne Bigane Wilson '76  
 Lenore (Lisa) Bozich  
 William and Helen Brett  
 Richard W. Burke, Sr.  
 Mary L. Burke  
 Sister Cathleen M. Cahill, RSM  
 Sister Nancy Cahill, RSM

Mary and Patrick Carroll  
 CGT Aesthetics Ltd  
 Bart and Mary Ellen (Carroll '84) Clifford  
 Terry and Terri Corcoran  
 Country House  
 County Fair  
 Sister Mary Joella Cunnane, RSM  
 Randy Cunningham  
 Paul and Jayne Dederichs  
 Tim and Lisa (Rooney '81) Doody  
 Mark and Debbie (Morgan '76) Essig  
 Evergreen Care Center Ltd.  
 Fifth Third Bank  
 Fitzgerald Real Estate  
 Gillian Gress  
 Michele Grubish  
 Michael Gurgone  
 Mark and Laurie Hajduch  
 Sister Mary Hanseder, RSM  
 Thomas and Nancy Hanson  
 Beth and Denny Hart  
 Herff Jones/James Cranley  
 J.O. Middlebrook Charitable Trust  
 Sister Colette Jolie, RSM  
 Matthew Kamin and Diana Zamojski-Kamin  
 Richard Kavanaugh  
 Raleigh and Jackie Kean  
 James and Celeste Kramer  
 Raymond and Deanna Lazzara  
 Legat Architects  
 Lettuce Entertain You Enterprises/  
 Jerrod Melman

John and Janet (Sokol '73) Lombard  
 Michael and Bette Lombard  
 Sister Campion Maguire, RSM  
 McAuley Students  
 Mike McDonagh  
 John V. and Cabrini McNerney  
 Kevin McIntyre  
 James and Carmen McNealy  
 Misericordia Home  
 Mueller & Co.  
 Jim and Alida Nally  
 Kathleen Ragen Nolan  
 David and Noreen Raminski  
 Paul Rossetti/Service Unlimited  
 Daniel Rowan, MD and Susan (McNicholas '76) Rowan, DDS  
 Sister Ellen Marie Ryan, RSM  
 Sister Jane Schlosser, RSM  
 Season Comfort Corporation  
 Service Unlimited/Paul Rosetti  
 Sister Betty Smith, RSM  
 Steuber Florist/Scot and Kathryn Steuber  
 Sun Capital Partners Foundation  
 Michael Vanier  
 Vulcan Materials Company  
 Waddell & Reed/Corsalis Group  
 William Quinn & Sons  
**McAuley Sponsor**  
 Ann Acker  
 Laurence and Nancy Acker  
 James and Petrina Capuano  
 Patrick and Jennifer Coakley

John and Rosemary (Mele '68) Coleman  
 Donna McNealy Cook  
 Sister Mary Brian Costello, RSM  
 George and Marge Cullen  
 Marty and Kathryn Doyle  
 Hillary Ebach  
 Katie Edwards/Edwards Insurance Agency  
 Pat and Patti Folliard  
 Lawrence and Priscilla Gallagher  
 Bette Gordon  
 Edward and Catharine Hennessy  
 IUOE Local 399  
 Mike and Jill Jaksich  
 John Kennedy  
 Ray and Nancy Kratzer  
 Judy and Siegfried Kratzke  
 Levi Strauss Foundation  
 Little Company of Mary Hospital and Health Care Centers  
 Betty Lombard  
 Dan and Mary Lombard  
 Martinique Banquet Complex  
 McAuley Father's Club  
 McAuley National Honor  
 Bonita McCarthy  
 Martin McFadden Family  
 Dawn and Thomas McNicholas  
 Robert and Cecily (Ahern '81) Millerick  
 Mary and Ed O'Connell  
 Dave and Carol O'Keefe  
 William and Linda O'Reilly  
 Severo and Suzanne Pedroza



Pipefitters Local 597  
 Sandy and Genaro Romo  
 Schuld Family Fund/Mary Jo Schuld  
 James F. Schuster  
 George Scully  
 Thomas Demetrio Foundation  
 Jacob and Cynthia Weglarz  
 Wiedemann Insurance  
 Thomas Williams  
 Sterling and Missy Wright, Jr.

**McAuley Supporter**

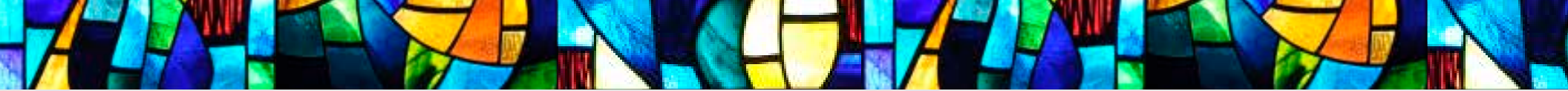
AbbVie Employee Giving  
 Janet Amedio  
 Amsted Industries Foundation  
 Anonymous  
 Robert and Bessie Anthony  
 Dennis and Geraldine Antolec  
 Mark and Erin Antonietti  
 Jim and Mary Antos  
 AT&T Employee Giving  
 William Bigelow  
 Walter Bland, Jr. and  
 Robin Mangrum-Bland  
 Catherine Blitz  
 Tom Broderick  
 Sister Lois Bromark, SSJ/TOSF  
 Jan Brown  
 Gerald Brown  
 Sister Mary Ruth Broz, RSM  
 Kevin and Marcy Buick  
 Jacob and Denise Bulthuis  
 State Rep. Kelly Burke  
 Bush Family Eye Care  
 Chester and Janice Cain  
 Peggy Callahan  
 Lisa and James Carney

Cynthia Papp Carrington  
 Sister Barbara Centner, RSM  
 Christ the King Parish and  
 Alumni Association  
 Thomas and Holly Cichy  
 James and Mary Irene Clarke  
 Mike and Trish Coffey  
 Lewis and Deeanne Conn  
 Sister Rosemary Connelly, RSM  
 J.R. Connolly  
 Brendan and Terry Conroy  
 James A. Cranley/Herff Jones  
 Michael and Anne Cullen  
 Kai Cullerton  
 Ramiro and Elizabeth Cumpian  
 Senator Bill Cunningham  
 Patrick and Peggy Curtin  
 Pete and Lisa Czyszczon  
 Tom and Patricia Dart  
 Brad Davis and Kathleen  
 Gordon Davis  
 Mary Catherine DeVoto  
 William and Mary Ann Droel  
 John and Jackie Dunn  
 Joseph and Marianne Durham  
 Patricia Durkin  
 Jeremy Eberhard  
 Ginny Eck  
 Edward Touhy Guardian  
 Angel Foundation  
 Robert and Audrey Englehardt  
 Mary Esterhammer-Fic  
 Exelon Corporation  
 Sister Alice Marie Feehan, RSM  
 Tim and Sue Finger  
 Sister Cora Finnane, RSM  
 Salvatore Fiorella

Kathi Fitzgerald  
 Kevin and Jennifer Fitzpatrick  
 Follett Virtual Bookstore  
 Lisa Forde and Bran Harvey  
 Monica Dwyer Fox  
 Charles Freiberg  
 Terence and Karen Frigo  
 Michael and Joan Frost  
 Timothy and Adrienne Gabel  
 JoAnne Gasienica  
 Teresa Geary  
 Beth Gierach  
 Kevin and Julie Gildea  
 Raymond and Marianne Gillfillan  
 James and Beth Gilmartin  
 Most Rev. Raymond Goedert  
 Goldman Sachs  
 Tom and Kristine Gorman  
 Denise Graney-Dolan and  
 Michael Dolan  
 Lawrence and Shaneetra Green  
 Paul and Patricia Greenawalt  
 Richard and Christine Guzior  
 Josh Hale  
 Shalina Hampton  
 Janet Hansen  
 Thomas and Carol Hardiman  
 Katie and Michael Hayes  
 Andrea Hoffman  
 Charles and Linda Hoffman  
 Sister Nancy Houlihan, RSM  
 Mary Houlihan  
 Rebecca Houston  
 Jennifer Hynes  
 IBEW Local 134  
 Bob and Marilyn Jansen

Ed Julliard  
 Todd and Tara Justic  
 Donna Keiken  
 Patrick and Leslie Quade Kennedy  
 Mary Kenny  
 Robert Klingenberger  
 Eileen and Patrick Knightly,  
 Erin '07, Mary Kate '10  
 Eileen Kochanny  
 David Koepke and Martha Zebala  
 Mike and Pat Kominiarek  
 Thomas and Therese Kwiatkowski  
 Faye Lack  
 Paul and Karen Lally  
 Mary Ellen LaVoie  
 Sister Mary E. Loftus, RSM  
 Tracy and Charles LoVerde III  
 Sister Maura Lowrey, RSM  
 Kenneth and Doreen Lynch  
 Marathon Sportwear  
 William and Mary Martin  
 Joyce Martin  
 Timothy McArdle and  
 Sharon McDermott  
 McAuley Alumnae Mother's  
 Bridge Club  
 Walter and Janice McAuliffe  
 Sister Kathleen McClelland, RSM  
 Barry and Joan McClorey  
 Mary McCormick  
 Richard and Betty Pat McCoy  
 Mike and Sheri McGowan  
 Jim and Kelly McHugh  
 James and Elizabeth McIlvain  
 Marilou McInerney  
 Mr. Timothy Mcivain  
 Daniel and Paulette McNally

Nancy McNally  
 Amy and Ed McNicholas  
 Michael and Margaret McShane  
 Jeanne Miller  
 Wendy Miller  
 Mary Pat Monson  
 Amy Moran  
 Carol Moriarty  
 Rev. Otis and Monica Moss  
 Most Holy Redeemer School  
 Motorola Foundation  
 Sister Carol Mucha, RSM  
 Mary Mullins  
 Timothy and Ann Mundt  
 Brian and Cora Murphy  
 Jennifer Murzyn  
 Robert Napleton  
 Pat and Sara Nash  
 Chuck and Therese Naso  
 Damon and Jeni Nelson  
 Vicki Nettle  
 Mariellen Newquist  
 Oak Lawn Park District  
 Janice O'Brien  
 John and Kathleen O'Carroll  
 Caryl O'Connor  
 David and Carrie O'Gara  
 Old St. Patrick's Church  
 Harold Olofsson Family  
 Gerald and Darlene O'Malley  
 Daniel and Kristine O'Reilly  
 Alderman Matthew J. O'Shea  
 Mary Brigid O'Toole  
 Patrick O'Toole  
 Luella T. Pakieser  
 Steve Palmitier



Sister Elizabeth Pardo, IHM  
 Michael and Jennifer Pickens  
 Michelle Platt  
 Linda Porter  
 Kathleen Pozniak  
 Emil and Roxolana Pyk  
 Queen of Martyrs School  
 William and Catherine Ragen  
 Marge Rapp  
 Sheila M. Rave  
 Sister Corinne Raven, RSM  
 Kim Riechert  
 Denis and Kathleen Riordan  
 Patrick and Patricia Rohan  
 Noelle Rubino  
 Edward and Susan Ruff  
 Marilyn Rush  
 Michael and Mary Kathryn Saracini  
 SC Johnson Family  
 Schoolbelles  
 Sister Margot Schueneman, RSM  
 Susan Schwartz  
 Laura and Steven Seweryn  
 Brian and Kitty Shannon  
 Jim and Katie Shannon  
 Jeanne Sheehan  
 Mary Anne Smrz  
 Laura Snow Gawlik  
 Ralph Soch  
 Solution 3 Graphics, Inc.  
 St. Cajetan Men's Club  
 St. Cajetan Women's Club  
 St. Christina Parish  
 St. John Fisher Church  
 St. Linus Men's Club  
 Scot and Kathryn Steuber

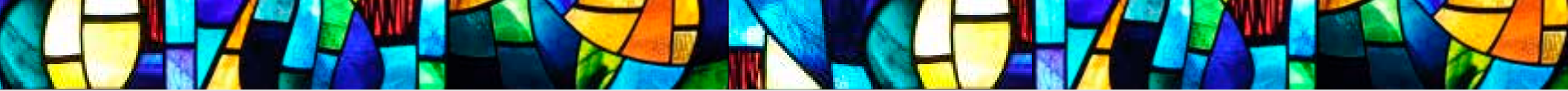
Russ and Sue Stevens  
 Maureen Stritch  
 Gregory and Mariann Stupka  
 Timothy and Kathleen Sulikowski  
 Kevin Sullivan  
 Peter and Michelle Sullivan  
 Roz Sunquist  
 Robert Widman and  
 Angela Villanueva  
 Mark and Maria Wantuck  
 William Webb and  
 Diana Brawka-Webb, PhD  
 Steve and Tereba Wesclitz  
 Leslie White Gillespie  
 Mark and Jeanne Williamson  
 Paul and Patricia Wojcicki  
 Fred and Laura Zeilner  
**McAuley Believers**  
 Laurence and Anne Acker  
 Julianne Alvarado  
 Nancy Anchacles  
 Amy Anderson  
 Christa Arquilla  
 Kathleen Austin  
 Margaret Bartoszewski  
 Kathleen Beaulieu  
 Gail Bedingfield  
 Debra Bewley  
 Cynthia Bik  
 Richard and Grace Blaszak  
 Casimir and Darlene Bleski  
 Beth Blouzdis  
 BMO Harris Employee Giving  
 BP Employee Matching Fund  
 Pete and Deborah Breakey  
 Nancy Brook  
 Carol Buick  
 Tracy Burke

James and Karen Calcagno  
 Sister Maryellen Callahan, RSM  
 Donald and Sharon Callahan  
 Francis C. Carmody  
 Albert and Marilyn Chaps  
 Robert Cislo  
 Ashley Clanton  
 Marianne Coakley  
 Maureen Connelly  
 Dennis and Deborah Conway  
 Colleen Cook  
 Rob and Linn Cummings  
 Kevin Czarnecki  
 Tara Daniher  
 Patrick and Kathleen Dattulo, Sr.  
 Jim and Jackie Davoren  
 Pflingsten, Vercimak and  
 Devine Stark Families  
 Julie Doane  
 Lauren Dowden  
 Thomas and Susan Driscoll  
 Alison Duggirala  
 William and Patricia Dunne  
 Mary Pat Enslin  
 Mary Ellen Fahey  
 Mary Feerick  
 Kristin Feigl  
 Kenneth and Jennifer Foyle, Jr.  
 Margrette Francis  
 GE Foundation  
 Kathleen Gidcumb  
 Anonymous  
 William and Mary Joan Gleeson  
 David and Loretta Golden  
 Michael and Beth Grady  
 Philip and Margaret Graham  
 Grenzsbach Glier and Associates  
 Ginny Griffin  
 Orv Grimes

Guggenheim Partners LLC  
 Michelle Gustis  
 Holly Hankey-Nickels  
 Frank and Margaret Harmon  
 Tom and Trish Harrington  
 Carolyn Hart  
 Patrick and Cathy Hayes  
 Clare Haynes  
 Larry and Jackie Heavey  
 Mary Heinrich  
 Mark Hlade  
 Carol Hollingsworth  
 Peg Hughes  
 Jane Jachim-Campbell  
 Jean Jackiw  
 JP Morgan Chase Foundation  
 Vicky Kazin  
 Laurie Keaty  
 Eva S. Kelly  
 Marie Kennedy  
 Michael and Colleen Kenzinger  
 Margie King  
 Sally and Mike Kirby  
 Elizabeth Kort  
 Virginia Kummerer  
 Maureen Kuriata  
 Jayne Laird Sorkis  
 Matthew Lambert  
 LBP Manufacturing  
 Tom and Jennifer LePretre  
 Charlotte Lichtenfeld  
 Marie Lloyd  
 Christopher Lydon  
 Nancy Lynch  
 Terry Lyne  
 Nancy Lyne  
 Delphine Lytell  
 Eileen Maggiore  
 Scott and JoAnne Malito

Mary Kay Mannelli  
 Louis and Laura Marlin  
 Jean and Thomas Maroney  
 Michael Martin Family  
 Marjorie Mazzola  
 Jerry and Carolyn McGovern  
 Theresa McGrail, Maggie '99  
 and Kate '07  
 Nereida McGrath  
 Anne M. McGriff  
 Sister Kay McIntyre, RSM  
 Marty and Kathleen McLaughlin  
 Sean and Connie McLaughlin  
 Daniel and Maureen McNamara  
 Christine M. Melone, EdD  
 Gina Miceli  
 David and Colette Miller  
 Patricia Murdock  
 Joseph and Bonnie Murray  
 Ed Napleton Honda  
 Karen Neimanas  
 Timothy Neylon  
 Maureen Nitsche  
 Mary Norris  
 Kelsey O'Brien  
 Julie and Benedict O'Connor  
 Thomas and Laura O'Connor  
 James and Cathy O'Keefe  
 Robin O'Keefe  
 Mary Pat Pearson  
 Kathleen Perna  
 Deanna Pierce  
 Kathleen Pratl  
 Ronald and Kathryn Preston  
 Candace Puchek  
 Anthony Rallis  
 Anthony and Debra Rappold  
 Andrew Reuland  
 Mary Catherine Revane





Eileen Reynolds  
 Carol Rezmer  
 Linda Rogge  
 Virginia Rooney  
 Timothy Rooney  
 Michael Rubin  
 Marie Ruff  
 Michael Salmon

Kevin and Therese Scanlan  
 Eric Schmitt  
 Melissa Scholl  
 Jonathan Sedlacek  
 Sister Mary Sheehan, RSM  
 Art Sheridan  
 Joy Slisz  
 Dorothy Smith

Loraine Sorley  
 Mary Ann Stanton  
 Amanda Sullivan  
 Cheryl Law Sullivan  
 Patrick Sullivan  
 Mary Swanson  
 Robert and Rosemary Thomas  
 Robert and Jennifer Thompson

Jerry and Anna Trynoha  
 Kim Turnbull  
 William and Dawn Unhock  
 Julie Unold  
 Jean Morman Unsworth  
 Tim Vail  
 Rosemary Valentas  
 Abiodun and Danny Vohasek

Mary Ward  
 William Blair & Co. LLC  
 Jan and Denny Wilson  
 Sister Therese Windham, RSM  
 Debra Zale  
 Rich and Tricia Zoller  
 Patricia Zoller





# Gifts

## IN HONOR OF

Kate Shannon Boyle '82  
William R. Brett  
Sister Lois Bromark, SSJ/TOSF  
Richard M. Burrigge  
Richard and Maryjeanne Burke,  
2019 Celebration Catherine  
McAuley Award  
Kathleen M. Carey  
Melissa Carroll  
Melissa Carroll '17  
Sister Mary Brian Costello, RSM  
2013 McAuley Hall Inductee  
Moira Cumpian '11  
Tom Draski  
Sister Cora Finnane, RSM  
Jenny Costello Fortner '94,  
2019 McAuley Hall Inductee  
Megan Griffin Gardner '99  
Kara Coghlan '21  
Bette Gordon  
Carla Hall '73,  
2019 McAuley Hall Inductee  
Sisiter Delores (Dee) Hannon  
Nora Harvey '22  
Mary Cartan Hendry '63,  
2019 McAuley Hall Inductee  
The Hennessy Family  
Melodie Johnson Karnezis '61  
James Kean  
W. Raleigh Kean  
Paige A. Kennedy '14

Mary Acker Klingenberger '75  
Mary Laughlin (former MMC IT Staff)  
Dr. Jennifer Lim '80,  
2019 McAuley Hall Inductee  
Dr. Jerry Lordan  
Julie MacKenzie  
Michael Macander  
Sister Mary Catherine McDonagh, RSM,  
2019 Celebration Life Trustee  
Dawn Jenkinson McKenna '86,  
2019 McAuley Hall Inductee  
Emily McNally '20  
Bernadette Miar '19  
Michelle Walsh Ozanne '88  
Jessica M. Pedroza '15  
Emily A. Rappold '14  
Mary Roche  
Mariah Cumpian Rutter '08  
Sr. Ellen Marie Ryan, RSM,  
2019 McAuley Hall Inductee  
Sue Scully Schultz '73,  
2019 Celebration Life Trustee  
2019 Sister of Mercy Jubilarians  
Samantha Sullivan '19  
Jan Chylla Wagner  
Carolyn Walsh '86  
Anne Bigane Wilson '76  
2015 McAuley Hall Inductee  
Sister Therese Windham, RSM  
Cheryle Wittert

## IN MEMORY OF

Laurie Becker Baker '89  
Kathie Berka  
Joseph Beymer  
Zivile Bilaisis '69  
Michael Coffey  
Danny Collins  
Mary Jo Desmond  
Joan Duffy  
Kathy Duffy  
Sister Margaret Gallagher, RSM  
Susan Killick Horn Geraghty '71  
Charles D. Gordon  
Caroline Griffin '12  
Kathy Haggerty  
Susan Walsh Haggerty '65  
Josephine H. Hoffman  
Mary Ann Hogan '73  
Mike Janko  
Eileen Ehrenstrom Jenny '71  
Joanne McNealy Kampton '61  
Shirley Koss  
Susan Lang  
(former MMC English Faculty)  
Christine Lavelle  
Diane Lynch  
Patricia Lynch

Richard "Bud" Lynch  
Sharon Cook Madden '66  
Michelle Majewski '11  
Marilyn Malooly  
Mary Lou Bigelow Marovich '67  
David Maslar  
Erin B. McEldowney '02  
Patricia McGreal  
(former MMC Librarian)  
Clarice Melone  
Marion and Jerry Moriarty  
Magdalen Belickas O'Toole '76  
Annamae, Allen and Jimmy Pierce  
Charlotte Riley  
Dolores Rourke  
Kevin Rowan  
Kay Schumacher  
Sharon Stach '73  
Mary Kay Thibeau '70  
Jane and August Trapp  
Mary Kay McGrath Rotsch '74  
Michelle Wegrzyn '76  
Len Wehrmeister  
(former MMC Math Faculty)  
Mary Jane Whalen



# Inspire. Invest. iMPact!

Here are a few ways to contribute to Mother McAuley and demonstrate your love for our school and hope for its continued success.

### Share your McAuley story

Powerful connections are made through the inspirational stories of our alumnae and families, and there is no better testament to the impact of the lifetime advantage of McAuley education. You are among the best ambassadors for the school. You know the value of your experience here and how it might help another girl succeed in life. If there is a student you know who would benefit from a McAuley education, invite her to an Open House, encourage her to shadow, or refer her to our Admissions team.

### Volunteer

The gift of your time is priceless. Participating in Career Day! Speaking with students and volunteering at events are a few ways you can get involved and show our students how you value their work and accomplishments.

### Events

You can attend, become a sponsor or provide auction items for Celebration 2020, Fore the Macs, McAuley Hall and more. Visit our website.

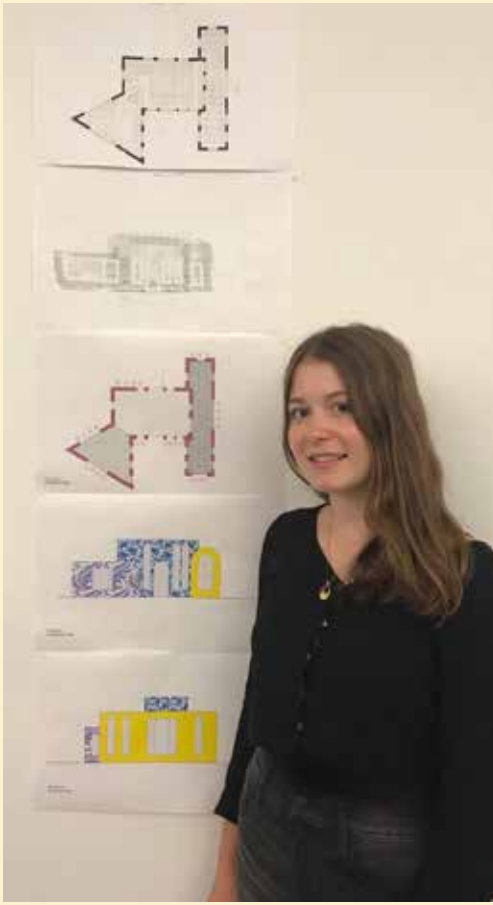
### Financial Support

All that a McAuley education has to offer would not be possible without monetary donations from individuals, businesses and foundations. Unrestricted gifts to our Annual Fund are welcomed and appreciated and can be applied where the need is greatest. To make a donation online visit [mothermcauley.org/give](http://mothermcauley.org/give)

### Planned Giving

Plan a gift for now, or for later. Make a statement of intent through a bequest that can be inserted into your will or living trust, and you will become a member of our Catherine McAuley Legacy Society. As a planned gift it is free of estate and other taxes. If you already have included Mother McAuley in your will, please notify us so we may acknowledge your thoughtfulness. For more information, please contact Carey Temple Harrington, Vice President of Institutional Advancement at (733) 881-6557 or [charrington@mothermcauley.org](mailto:charrington@mothermcauley.org)

If you are an individual aged 70 1/2 or older, please consider directing your IRA distribution to Mother McAuley. This provision allows individual taxpayers to make a charitable contribution up to \$100,000 from your Individual Retirement Accounts (IRAs) directly to Mother McAuley with NO tax bill.



## Annamarie Olsen '20

participated in the HiArch Summer High School Architecture Workshop at the University of Illinois at Chicago. Annamarie used architectural software to design buildings and used mediums like wax, plaster, cement and clay to put together room models. She also heard from guest lecturers and designers and attended panel discussions.

## Grace Ellerbeck '20

volunteered at the Ann & Robert H. Lurie Children's Hospital of Chicago. She was selected to take part in their competitive 10-week Summer Intensive Program, where she interacted with patients, stocked rooms and assisted medical staff. *Grace is a John Keeley scholarship recipient.*



Aminah Amadou '20 spent two weeks of her summer at "Imaging Self: Precollege Summer Arts Intensive" at the University of Wisconsin-Madison. Aminah had the opportunity to work with practicing artists such as dancers, actors, stage technicians, and visual artists to explore and express the concept of self. At the end of the two weeks, Aminah and her peers put on a showcase that was displayed at the Madison Children's Museum. *Aminah is a Daniel Murphy scholar.*

# Summer Immersion Stories



*Since there is very little good that can be accomplished  
or evil avoided without the aid of money,  
we must look after it in small as well as in great matters.*

CATHERINE MCAULEY,  
letter to Father James Maher, January 10, 1838

## Mother McAuley Liberal Arts High School

is a Catholic educational community committed to providing a quality secondary education for young women. In the tradition of the Sisters of Mercy and their foundress, Catherine McAuley, we prepare students to live in a complex, dynamic society by teaching them to think critically, communicate effectively, respond compassionately to the needs of their community and assume roles of Christian leadership. In partnership with parents, we empower young women to acknowledge their giftedness and to make decisions with a well-developed moral conscience. We foster an appreciation of the diversity of the global community and a quest for knowledge and excellence as lifelong goals.

3737 W. 99th Street | Chicago, IL 60655

[www.mothersmcauley.org](http://www.mothersmcauley.org)

Follow us!   



**MOTHER  
MCAULEY**  
Liberal Arts High School

