



# Positive Behavior Support

Points for Prizes

2017-2018

# About us

- ▶ Located in Wyandotte, MI
- ▶ CI/EI and ASD
- ▶ Students ages 5-26 years old
- ▶ Service 17 school districts in the downriver region

# Positive Behavior Support at The Lincoln Center

▶ ~~Lion of the Week~~



# Points for Prizes

- ▶ Students will receive points for their participation in their planned educational programming
- ▶ Every hour, EVERY STUDENT should be awarded **ONE POINT** for safe, respectful and responsible behavior while participating in their planned activities during that hour.
- ▶ What does this mean?

# Points

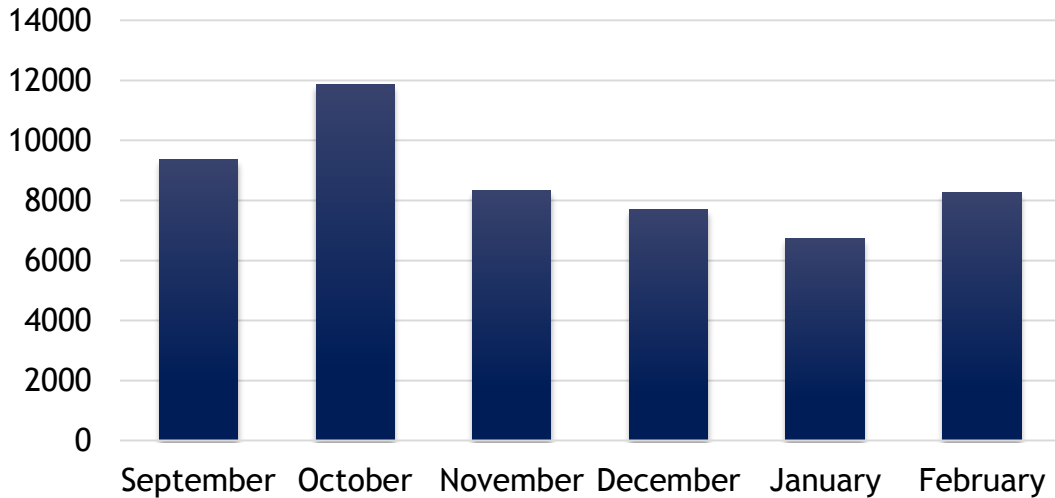
- ▶ A point is awarded during each hour of the school day, with a possibility to earn up to three bonus points throughout the day
- ▶ Students have the opportunity for a **FRESH START** every hour
- ▶ Points are tracked on the provided data trackers
- ▶ Data trackers are to be copied and turned in to PBS weekly





# Points School-Wide Data

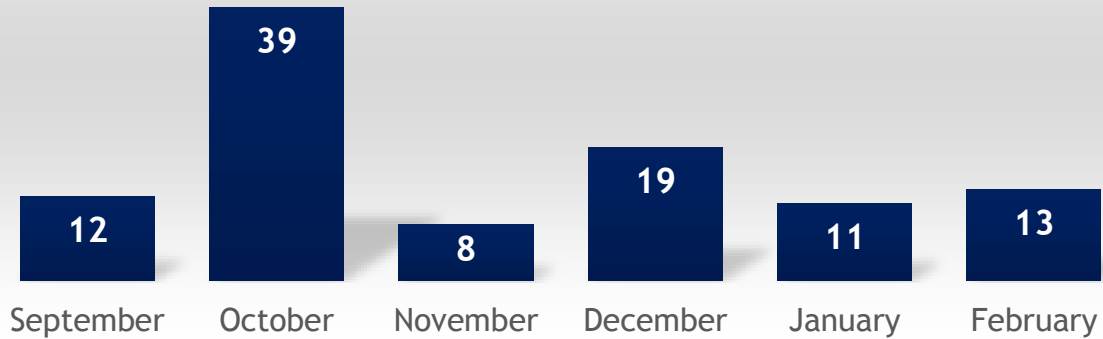
## TLC Total Points by Month





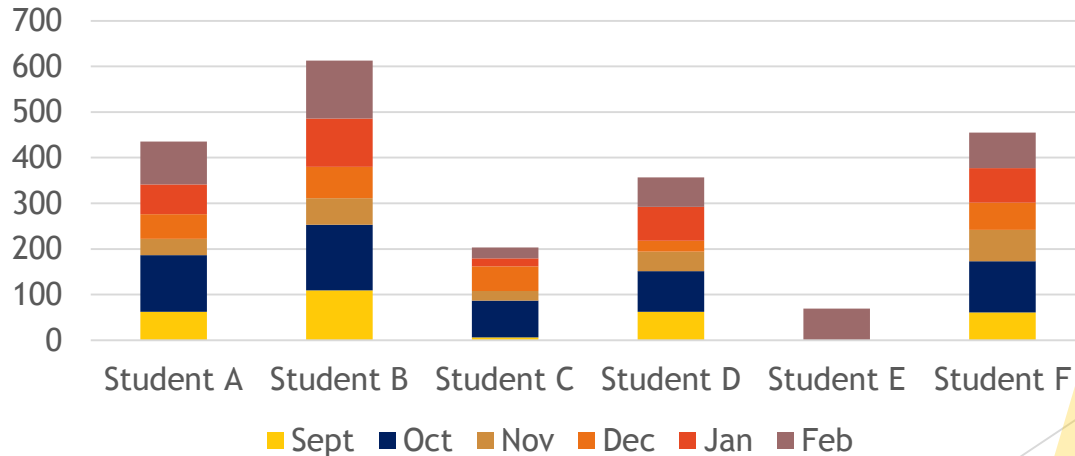
## Points for Prizes

Students who met 80% Goal (112 points)



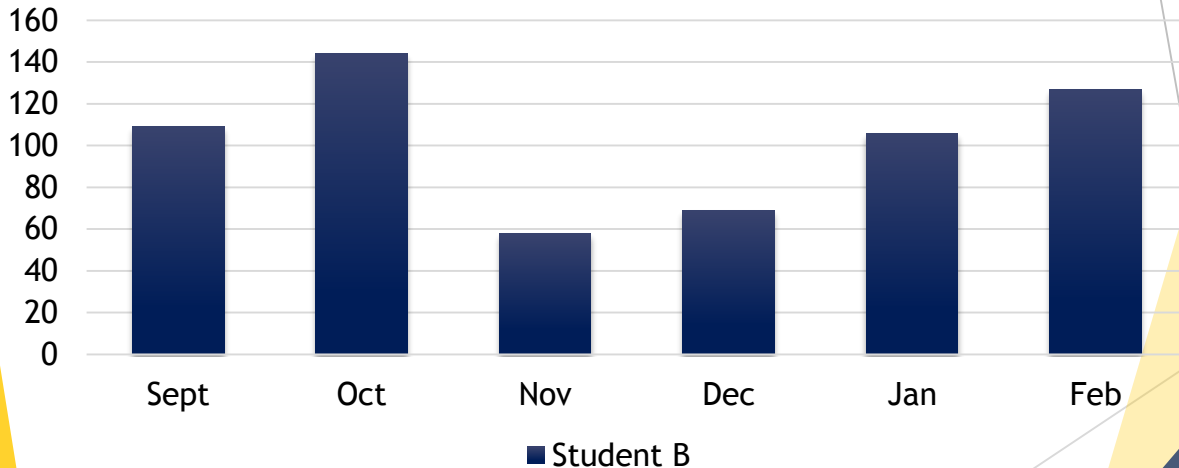
# Points Classroom Data

## Room 105 Points for Prizes Total



# Individual Data for IEP, PSTs, or WAMs

## Student Points for Prizes by Month



# Prizes

On Friday students will be able to turn their points in for prizes or they have the option to carry their points over to save for a larger prize- (video link)

Data trackers will be used to carry over points if students chose to do so

Prizes will be located in the in The Lion's Den

Catalogs

Where we get our prizes

# What about the School Based Enterprises?

- ▶ Coupons can be redeemed at TLC's School Based Enterprises

Kernel's Corner  
Café Express  
Snack Shack

- ▶ Coupons will be available for points in The Lion's Den

# Modifications- ASD example

- ▶ Modification for different ability levels across the program

**When I am frustrated I will use my words and ask for:**

1. Ask for squeezers
2. Ask for squeezers with lotion
3. Ask for something to chew on
4. Ask to go on a walk

## How Am I Doing Today?

Student	Breakfast	Morning Work	Calendar	Reading	Work	Lunch	Scholastic	First Author	Special	Math Centers	DAY TOTAL	WEEK TOTAL
Christopher												40
Collin												40
Jason												40
Josh												28
Manny												39
Riddick												!!

**Additional Resources:**

- The Lincoln Center: Inspire • Empower
- Classroom Expectations: PBS
- End of Day Responsibilities: Scatter Plot and ABC Logs
- Check-in / Check-out Sheets

# Modification - Student Tracker

Points for Prizes at THE LION'S DEN



Name \_\_\_\_\_

Monday

S	M	T	W	T	F	S	S

--	--	--	--	--	--	--	--

Tuesday

S	M	T	W	T	F	S	S

--	--	--	--	--	--	--	--

Wednesday

S	M	T	W	T	F	S	S

--	--	--	--	--	--	--	--

Thursday

S	M	T	W	T	F	S	S

--	--	--	--	--	--	--	--

Friday

S	M	T	W	T	F	S	S

--	--	--	--	--	--	--	--



Bonus Points

--	--	--	--	--

Total Points

--

# Sustainability

In the future...

- ▶ Outside of each classroom there will be a laminated chart
- ▶ Staff members can award points to another classroom with a brief explanation of why and if the classroom meets the monthly target they will have the opportunity to engage in a planned PBS activity in the classroom



# Contact- Lincoln Center- 734-759-5900

- ▶ Lauren Feigel, Principal - [FeigelL@wy.k12.mi.us](mailto:FeigelL@wy.k12.mi.us)
- ▶ Stephen Gaitens, Behavior Specialist - [GaitenS@wy.k12.mi.us](mailto:GaitenS@wy.k12.mi.us)
- ▶ Jaime Lopez, CI/EI Teacher - [lopezj@wy.k12.mi.us](mailto:lopezj@wy.k12.mi.us)
- ▶ LaThomas Willis, Behavior Specialist - [willisl@wy.k12.mi.us](mailto:willisl@wy.k12.mi.us)