

LEA Name : Lower Merion SD
Address : 301 E Montgomery Ave
Ardmore , PA 19003

County : Montgomery
AUN Number : 123464502
LEA Type : SD

Annual Financial Report Accuracy Certification Statement

For Fiscal Year Ending
6/30/2019

Pennsylvania Department of Education
&
Office of Comptroller Operations

PDE-2056: Intermediate Unit
PDE-2057: School District, AVTS/CTC, Charter School,
and Special Program Jointure

CERTIFICATION: By signing this page I agree that the electronic data submitted is a complete and accurate statement of the financial operations and status of the local education agency for the fiscal year. It has been prepared in accordance with generally accepted accounting principles and established Commonwealth of PA reporting guidelines.

Chief School Administrator Signature

Date

Board Secretary Signature

Date

Contact Person

Contact Person E-mail Address

(_____ Ext :

Contact Person Telephone Number

(_____

Contact Person Fax Number

(Pursuant to PA School Code Section 218(b))

County : Montgomery

12/31/2019

This certification is applicable to the Annual Financial Report data submitted through the Consolidated Financial Reporting System on: _____

Date _____

Auditing Firm:

CERTIFICATION: By signing this page I agree that the financial statements of the school have been properly audited as noted above pursuant to Article XXIV, and in the auditor's professional opinion, the Annual Financial Report (PDE-2057) submitted on the date referenced is materially consistent with the audited financial statements.

Chief School Administrator

Board Secretary

Signature

Date _____

Signature _____

Date _____

Contact Person

0

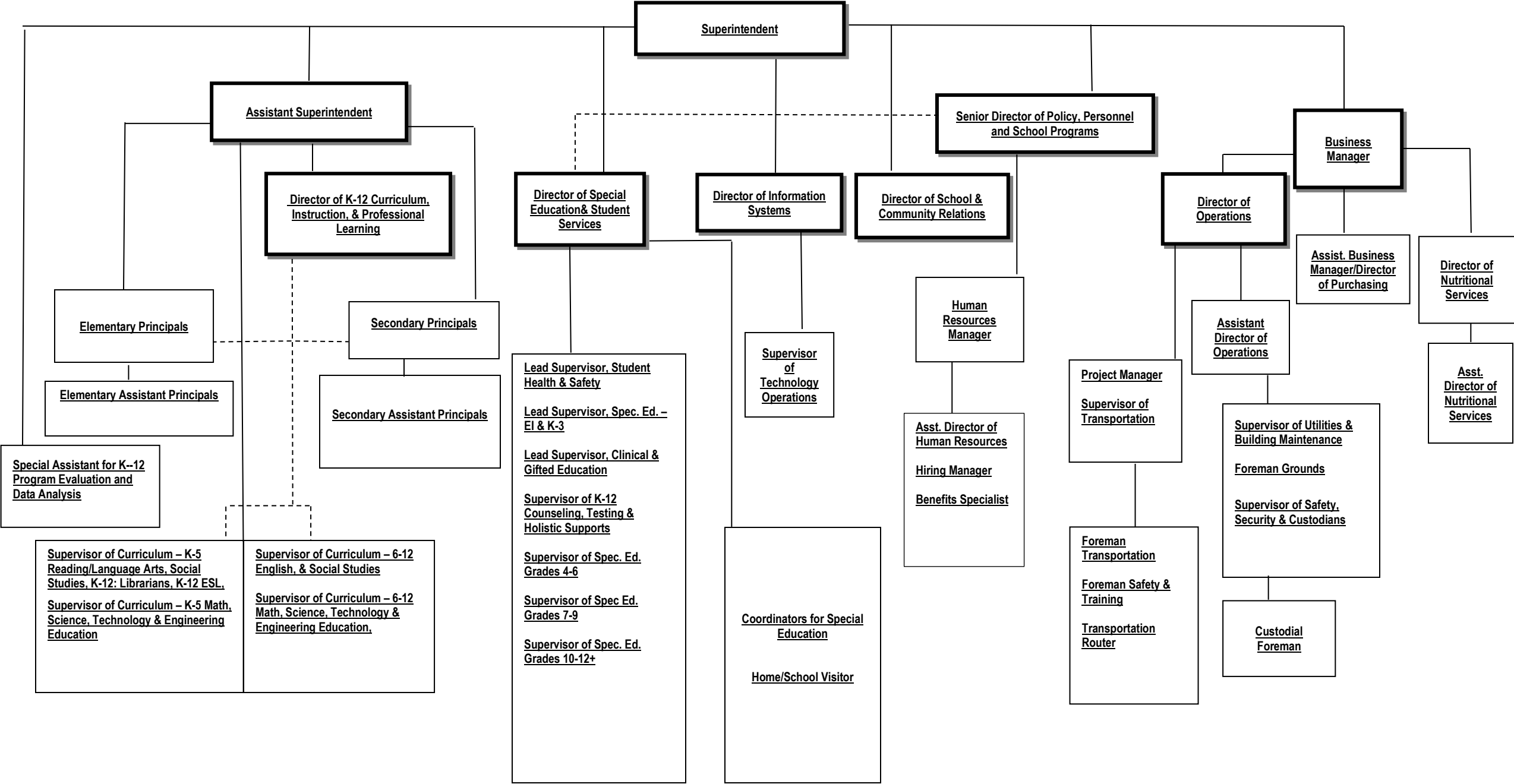
Contact Person E-mail Address

(Ext : _____

Contact Person Telephone Number

(_____) _____
Contact Person Fax Number

2018-19 Lower Merion School District
Organizational Chart



<u>Val Number</u>	<u>Description</u>	<u>Justification</u>
13020	<p>REG: Interfund Trans-Out must equal REG Interfund Trans-In plus REP Interfund Trans In minus REP Interfund Trans-Out. (REG 5200 = REG 9300 + REP 9300 - REP 5200) Reference amts do not include any incoming transfers of the Fid. Funds. Include Fid. Fund incoming transfer info in the justification. Correct or enter a justification.</p> <p>Transfers Out (REG 5200): \$37,065,769.00 (REG 9300) + (REP 9300) - (REP 5200) : \$37,046,706.00</p>	<p>The difference of \$19,063 is a transfer from the General fund to the Student Activity Fund. Student Activity Fund is identified as a Fiduciary Fund on our records.</p>
41005	<p>Expenditures have been reported in Function 1700 – Higher Education Programs for Secondary Students. Please confirm that these costs were for services provided to your school's secondary students. NOTE: Adult education programs and Community College sponsorship should be coded to Function 1600.</p> <p>Exp detail, Fund 10, Function 1700 total \$26,037.00</p>	<p>High school students took higher education courses at a local college as part of our dual enrollment program.</p>
60135	<p>ICR - Proprietary Expense Detail: Entries in Fund 51 and Object 200 must equal Statement of Revenues, Expenses, and Changes in Net Position (REP)</p> <p>Prop Exp Dtl: Fund 51, Object 200: \$737,104.50 REP: Fund 51, Object 200: \$737,099.00</p>	<p>The difference is due to rounding.</p>

LEA : 123464502 Lower Merion SD

Printed 11/19/2019 10:43:08 AM

Amounts Expressed in Whole Dollars		<u>General Fund</u> <u>(10)</u>	<u>Public Purpose Trust</u> <u>(27)</u>	<u>Other Compt Approved</u> <u>(28)</u>	<u>Athletic / Activity</u> <u>(29)</u>	<u>Capital Reserve (690.</u> <u>1850)</u> <u>(31)</u>
Assets And Deferred Outflows Of Resources						
Assets						
0100	Cash and Cash Equivalents	437,353				
0110	Investments	67,214,414				
0120	Taxes Receivable	2,509,320				
0130	Due From Other Funds	7,437,958				
0141	Due From Other Governments	11,583,885				
0142	State Revenue Receivable					
0143	Federal Revenue Receivable					
0145	Other Intergovernmental Revenue Receivable					
0146	Due from Primary Government					
0147	Due from Component Unit					
0150	Other Receivables	911,686				
0170	Inventories					
0180	Prepaid Expenses (Expenditures)	378,466				
0190	Other Current Assets					
Total Assets		\$90,473,082				
0910	Deferred Outflows of Resources					
Total Assets And Deferred Outflows Of Resources		\$90,473,082				

LEA : 123464502 Lower Merion SD

Printed 11/19/2019 10:43:08 AM

Amounts Expressed in Whole Dollars		<u>Capital Reserve (1431</u> <u>(32)</u>	<u>Other Capital Projects</u> <u>Fund</u> <u>(39)</u>	<u>Debt Service</u> <u>(40)</u>	<u>Permanent</u> <u>(90)</u>	<u>Total Governmental</u> <u>Funds</u>
Assets And Deferred Outflows Of Resources						
Assets						
0100	Cash and Cash Equivalents					437,353
0110	Investments	14,836,283	16,937,650	4,375,324		103,363,671
0120	Taxes Receivable					2,509,320
0130	Due From Other Funds	30,045	14,900,000			22,368,003
0141	Due From Other Governments					11,583,885
0142	State Revenue Receivable					
0143	Federal Revenue Receivable					
0145	Other Intergovernmental Revenue Receivable					
0146	Due from Primary Government					
0147	Due from Component Unit					
0150	Other Receivables	10,177		5,260		927,123
0170	Inventories					
0180	Prepaid Expenses (Expenditures)					378,466
0190	Other Current Assets					
Total Assets		\$14,876,505	\$31,837,650	\$4,380,584		\$141,567,821
0910	Deferred Outflows of Resources					
Total Assets And Deferred Outflows Of Resources		\$14,876,505	\$31,837,650	\$4,380,584		\$141,567,821

LEA : 123464502 Lower Merion SD

Printed 11/19/2019 10:43:08 AM

Amounts Expressed in Whole Dollars		<u>General Fund</u> <u>(10)</u>	<u>Public Purpose Trust</u> <u>(27)</u>	<u>Other Compt Approved</u> <u>(28)</u>	<u>Athletic / Activity</u> <u>(29)</u>	<u>Capital Reserve (690.</u> <u>1850)</u> <u>(31)</u>
Liabilities And Deferred Inflows Of Resources And Fund Balances						
Liabilities						
0400	Due to Other Funds	14,990,747				
0411	Due to Other Governments					
0412	Due to Primary Government					
0413	Due to Component Unit					
0420	Accounts Payable	3,928,576				
0430	Contracts Payable					
0440	Current Portion of Long-Term Debt					
0450	Short-Term Payables					
0461	Accrued Salaries and Benefits					
0462	Payroll Deductions and Withholding	26,473,164				
0480	Unearned Revenues	285,447				
0490	Other Current Liabilities					
Total Liabilities		\$45,677,934				
0950	Deferred Inflows of Resources	1,761,809				
Fund Balances						
0810	Nonspendable Fund Balance	378,466				
0820	Restricted Fund Balance					
0830	Committed Fund Balance	20,800,000				
0840	Assigned Fund Balance	16,928,673				
0850	Unassigned Fund Balance	4,926,200				
Total Fund Balances		\$43,033,339				
Total Liabilities, Deferred Inflows Of Resources And Fund Balances		\$90,473,082				

LEA : 123464502 Lower Merion SD

Printed 11/19/2019 10:43:08 AM

Amounts Expressed in Whole Dollars		<u>Capital Reserve (1431)</u> <u>(32)</u>	<u>Other Capital Projects</u> <u>Fund</u> <u>(39)</u>	<u>Debt Service</u> <u>(40)</u>	<u>Permanent</u> <u>(90)</u>	<u>Total Governmental</u> <u>Funds</u>
Liabilities And Deferred Inflows Of Resources And Fund Balances						
Liabilities						
0400	Due to Other Funds		470,000			15,460,747
0411	Due to Other Governments					
0412	Due to Primary Government					
0413	Due to Component Unit					
0420	Accounts Payable	2,061,762	456,470			6,446,808
0430	Contracts Payable					
0440	Current Portion of Long-Term Debt					
0450	Short-Term Payables					
0461	Accrued Salaries and Benefits					
0462	Payroll Deductions and Withholding					26,473,164
0480	Unearned Revenues					285,447
0490	Other Current Liabilities					
Total Liabilities		\$2,061,762	\$926,470			\$48,666,166
0950	Deferred Inflows of Resources					1,761,809
Fund Balances						
0810	Nonspendable Fund Balance					378,466
0820	Restricted Fund Balance					
0830	Committed Fund Balance					20,800,000
0840	Assigned Fund Balance	12,814,743	30,911,180	4,380,584		65,035,180
0850	Unassigned Fund Balance					4,926,200
Total Fund Balances		\$12,814,743	\$30,911,180	\$4,380,584		\$91,139,846
Total Liabilities, Deferred Inflows Of Resources And Fund Balances		\$14,876,505	\$31,837,650	\$4,380,584		\$141,567,821

LEA : 123464502 Lower Merion SD

Printed 11/19/2019 10:43:28 AM

Amounts Expressed in Whole Dollars	General Fund (10)	Public Purpose Trust (27)	Other Compt Approved (28)	Athletic / Activity (29)	Capital Reserve (690. 1850) (31)
Revenues					
6000 Revenue from Local Sources	233,469,025				
7000 Revenue from State Sources	39,166,334				
8000 Revenue from Federal Sources	1,982,639				
Total Revenues	\$274,617,998				
Expenditures					
1000 Instruction	143,877,351				
2000 Support Services	75,927,885				
3000 Operation of Non-Instructional Services	5,627,794				
4000 Facilities Acquisition, Construction and Improvement Services					
5110 Debt Service	25,348,754				
5130 Refund of Prior Year Revenues / Receipts					
Total Expenditures	\$250,781,784				
Excess (Deficiency) Of Revenues Over Expenditures	\$23,836,214				
Other Financing Sources (Uses)					
9110 Face Value of Bonds Issued					
9120 Proceeds from Refunding of Bonds					
9130 Bond Premiums					
9200 Proceeds from Extended-Term Financing					
9300 Interfund Transfers - IN					
9400 Sale of or Compensation for Loss of Fixed Assets					
9710 Transfers from Component Units					
9720 Transfers from Primary Governments					
9910 Other Financing Sources Not Listed in the 9000 Series					
9990 Insurance Recoveries					
5120 Debt Service – Refunded Bonds					
5150 Bond Discounts					
5200 Interfund Transfers – Out	37,065,769				
5300 Transfers Out to Component Units/Primary Governments					
Total Other Financing Sources (Uses)	(\$37,065,769)				

LEA : 123464502 Lower Merion SD

Printed 11/19/2019 10:43:28 AM

Amounts Expressed in Whole Dollars	<u>Capital Reserve (1431)</u> <u>(32)</u>	<u>Other Capital Projects</u> <u>Fund</u> <u>(39)</u>	<u>Debt Service</u> <u>(40)</u>	<u>Permanent</u> <u>(90)</u>	<u>Total Governmental</u> <u>Funds</u>
Revenues					
6000 Revenue from Local Sources	266,993	202,588	76,205		234,014,811
7000 Revenue from State Sources					39,166,334
8000 Revenue from Federal Sources					1,982,639
Total Revenues	\$266,993	\$202,588	\$76,205		\$275,163,784
Expenditures					
1000 Instruction					143,877,351
2000 Support Services	7,787,421				83,715,306
3000 Operation of Non-Instructional Services					5,627,794
4000 Facilities Acquisition, Construction and Improvement Services	1,184,878	4,191,408			5,376,286
5110 Debt Service					25,348,754
5130 Refund of Prior Year Revenues / Receipts					
Total Expenditures	\$8,972,299	\$4,191,408			\$263,945,491
Excess (Deficiency) Of Revenues Over Expenditures	(\$8,705,306)	(\$3,988,820)	\$76,205		\$11,218,293
Other Financing Sources (Uses)					
9110 Face Value of Bonds Issued					
9120 Proceeds from Refunding of Bonds					
9130 Bond Premiums					
9200 Proceeds from Extended-Term Financing					
9300 Interfund Transfers - IN		34,900,000	2,146,706		37,046,706
9400 Sale of or Compensation for Loss of Fixed Assets					
9710 Transfers from Component Units					
9720 Transfers from Primary Governments					
9910 Other Financing Sources Not Listed in the 9000 Series					
9990 Insurance Recoveries					
5120 Debt Service – Refunded Bonds					
5150 Bond Discounts					
5200 Interfund Transfers – Out					37,065,769
5300 Transfers Out to Component Units/Primary Governments					
Total Other Financing Sources (Uses)		\$34,900,000	\$2,146,706		(\$19,063)

Amounts Expressed in Whole Dollars		<u>General Fund</u> <u>(10)</u>	<u>Public Purpose Trust</u> <u>(27)</u>	<u>Other Compt Approved</u> <u>(28)</u>	<u>Athletic / Activity</u> <u>(29)</u>	<u>Capital Reserve</u> <u>(690.</u> <u>1850)</u> <u>(31)</u>
Special And Extraordinary Items						
9920	Special Items – Gains					
9930	Extraordinary Items – Gains					
5520	Special Items – Losses					
5530	Extraordinary Items – Losses					
Net Change In Fund Balances		(\$13,229,555)				
Fund Balance						
0001	Fund Balance - Beginning of Fiscal Year	56,262,891				
Fund Balance - End Of Year		\$43,033,336				

Amounts Expressed in Whole Dollars		<u>Capital Reserve (1431</u> <u>(32)</u>	<u>Other Capital Projects</u> <u>Fund</u> <u>(39)</u>	<u>Debt Service</u> <u>(40)</u>	<u>Permanent</u> <u>(90)</u>	<u>Total Governmental</u> <u>Funds</u>
Special And Extraordinary Items						
9920	Special Items – Gains					
9930	Extraordinary Items – Gains					
5520	Special Items – Losses					
5530	Extraordinary Items – Losses					
Net Change In Fund Balances		(\$8,705,306)	\$30,911,180	\$2,222,911		\$11,199,230
Fund Balance						
0001	Fund Balance - Beginning of Fiscal Year	21,520,049		2,157,673		79,940,613
Fund Balance - End Of Year		\$12,814,743	\$30,911,180	\$4,380,584		\$91,139,843

LEA : 123464502 Lower Merion SD

Printed 11/19/2019 10:43:30 AM

Amounts Expressed in Whole Dollars	<u>Food Service</u> (51)	<u>Child Care</u> <u>Operations</u> (52)	<u>Other Enterprise</u> (58)	<u>TOTAL</u>	<u>Internal Service</u> (60)
Assets And Deferred Outflows Of Resources					
Current Assets					
0100 Cash and Cash Equivalents					
0110 Investments	1,567,680			1,567,680	
0130 Due From Other Funds	283,834			283,834	
0141 Due From Other Governments	149,124			149,124	
0142 State Revenue Receivable					
0143 Federal Revenue Receivable					
0146 Due from Primary Government					
0147 Due from Component Unit					
0150 Other Receivables	60,327			60,327	
0170 Inventories	71,595			71,595	
0180 Prepaid Expenses (Expenditures)					
0190 Other Current Assets					
Total Current Assets	\$2,132,560			\$2,132,560	
Noncurrent Assets					
0211 Land					
0212 Site Improvements (Net)					
0220 Buildings and Building Improvements (Net)					
0230 Machinery, Equipment and Furniture (Net)	23,099			23,099	
0250 Construction in Progress					
0260 Long Term Prepayments					
0290 Other Noncurrent Assets					
Total Noncurrent Assets	\$23,099			\$23,099	
0910 Deferred Outflows of Resources	525,115			525,115	
Total Assets And Deferred Outflows Of Resources	\$2,680,774			\$2,680,774	

LEA : 123464502 Lower Merion SD

Printed 11/19/2019 10:43:30 AM

Amounts Expressed in Whole Dollars	Food Service (51)	Child Care Operations (52)	Other Enterprise (58)	TOTAL	Internal Service (60)
Liabilities And Deferred Inflows Of Resources And Net Position					
Current Liabilities					
0400 Due to Other Funds	235,911			235,911	
0411 Due to Other Governments					
0413 Due to Component Unit					
0420 Accounts Payable	27,852			27,852	
0430 Contracts Payable					
0440 Current Portion of Long-Term Debt					
0450 Short-Term Payables					
0461 Accrued Salaries and Benefits					
0462 Payroll Deductions and Withholding					
0480 Unearned Revenues	205,946			205,946	
0490 Other Current Liabilities					
Total Current Liabilities	\$469,709			\$469,709	
Noncurrent Liabilities					
0510 Bonds Payable					
0520 Extended-Term Financing Agreements Payable					
0530 Lease-Purchase Obligations					
0540 Accumulated Compensated Absences					
0550 Authority Lease Obligations					
0560 Other Post-Employment Benefits (OPEB)	148,935			148,935	
0570 Net Pension Liability	3,729,805			3,729,805	
0599 Other Noncurrent Liabilities					
Total Noncurrent Liabilities	\$3,878,740			\$3,878,740	
Total Liabilities	\$4,348,449			\$4,348,449	
0950 Deferred Inflows of Resources	100,601			100,601	
Net Position					
0791 Net Investment in Capital Assets	23,099			23,099	
0008 Restricted Net Position (0792 – 0798)					
0799 Unrestricted Net Position	(1,791,375)			(1,791,375)	
Total Net Position	(\$1,768,276)			(\$1,768,276)	
Total Liabilities And Deferred Inflows Of Resources And Net Position	\$2,680,774			\$2,680,774	

Amounts Expressed in Whole Dollars	Food Service (51)	Child Care Operations (52)	Other Enterprise (58)	TOTAL	Internal Service (60)
Operating Revenues					
6600 Food Service Revenue	2,850,314			2,850,314	
0071 Charges for Services					
0072 Other Operating Revenue					
Total Operating Revenues	\$2,850,314			\$2,850,314	
Operating Expenses					
100 Personnel Services – Salaries	1,163,627			1,163,627	
200 Personnel Services – Employee Benefits	737,099			737,099	
300 Purchased Professional and Technical Services					
400 Purchased Property Services	39,714			39,714	
500 Other Purchased Services	5,632			5,632	
600 Supplies	1,480,496			1,480,496	
740 Depreciation	8,535			8,535	
810 Dues and Fees	2,163			2,163	
890 Miscellaneous Expenditures	41			41	
Total Operating Expenses	\$3,437,307			\$3,437,307	
Operating Income (Loss)	(\$586,993)			(\$586,993)	
Non Operating Revenues (Expenses)					
6500 Earnings on Investments	38,737			38,737	
6920 Contributions and Donations from Private Sources					
6930 Gains or Losses on Sale of Fixed Assets					
6991 Refunds of a Prior Year Expenditure					
7000 Revenue from State Sources	285,358			285,358	
8000 Revenue from Federal Sources	671,371			671,371	
9990 Insurance Recoveries					
820 Claims and Judgments Against the LEA					
830 Interest					
TOTAL Non Operating Revenues (Expenses)	\$995,466			\$995,466	
Income (Loss) Before Contributions And Transfers	\$408,473			\$408,473	

Amounts Expressed in Whole Dollars	<u>Food Service</u> <u>(51)</u>	<u>Child Care Operations</u> <u>(52)</u>	<u>Other Enterprise</u> <u>(58)</u>	<u>TOTAL</u>	<u>Internal Service</u> <u>(60)</u>
Contributions, Transfers, and Special and Extraordinary Items					
5200 Interfund Transfers – Out					
5300 Transfers Out to Component Units/Primary Governments					
5520 Special Items – Losses					
5530 Extraordinary Items – Losses					
9300 Interfund Transfers - IN					
9500 Capital Contributions					
9700 Transfers IN From Component Units/Primary Governments					
9920 Special Items – Gains					
9930 Extraordinary Items – Gains					
Change In Net Position	\$408,473			\$408,473	
0002 Net Position - Beginning of Fiscal Year	(2,176,749)			(2,176,749)	
0003 Accounting Changes / Residual Equity Transfers					
Net Position - End Of Year	(\$1,768,276)			(\$1,768,276)	

LEA : 123464502 Lower Merion SD

Printed 11/19/2019 10:43:52 AM

Amounts Expressed in Whole Dollars	<u>Food Service</u> <u>(51)</u>	<u>Child Care Operations</u> <u>(52)</u>	<u>Other Enterprise</u> <u>(58)</u>	<u>TOTAL</u>	<u>Internal Service(60)</u>
Cash Flows From Operating Activities					
0011 Cash Receipts From Users	2,854,186			2,854,186	
0012 Cash Receipts From Assessments Made to Other Funds					
0013 Cash Receipts From Earnings on Investments					
0014 Cash Receipts From Other Operating Revenue					
0015 Cash Payments To Employees For Services	2,118,014			2,118,014	
0016 Cash Payments For Insurance Claims					
0017 Cash Payments To Suppliers For Goods and Services	1,537,510			1,537,510	
0018 Cash Payments For Other Operating Expenses					
Net Cash Provided By (Used For) Operating Activities	(\$801,338)			(\$801,338)	
Cash Flows From Non-Capital Financing Activities					
0021 Receipts From Local Sources - 6000					
0022 Receipts From State Sources - 7000	279,634			279,634	
0023 Receipts From Federal Sources -8000	622,515			622,515	
0024 Notes and Loans Received (Repaid)					
0025 Interest Paid on Notes/Loans - 5100-830					
0026 Operating Transfers In (Out)/Residual Equity Trans					
0027 Operating Transfers In (Out) Primary Government / Comp Unit					
0028 Receipts From Refund of Prior Year Expenditures - 6991					
0029 Special and Extraordinary Gains (losses)					
0030 Receipts from Insurance Recoveries -9990					
Net Cash Prov By (Used for) Non-Capital Financing Activities	\$902,149			\$902,149	
Cash Flows From Capital and Related Financing Activities					
0031 Payments For Fac Acq, Const, and Imp - 4000	(23,199)			(23,199)	
0032 Gain / (Loss) on Sale of Fixed Assets - 6930					
0033 Proceeds From Extended Term Financing - 9200					
0034 Principal Paid on Financing Agreements					
0035 Interest Paid on Financing Agreements - 5100-830					
0036 (Inc) Dec in Contributed Capital					
Net Cash Prov By (Used for) Capital and Related Financing Activities	(\$23,199)			(\$23,199)	
Cash Flows From Investing Activities					
0041 Earnings on Investments - 6500					
0042 Purchase of Inv Securities / Deposits to Inv Pools	(77,612)			(77,612)	
0043 Receipts From Investment Pool Withdrawals					
0044 Proceeds from Sale and Maturity of Inv Securities					

LEA : 123464502 Lower Merion SD

Printed 11/19/2019 10:43:52 AM

0045 Loans Received (Paid)

Net Cash Prov By (Used for) Investing Activities	(\$77,612)	(\$77,612)
--	------------	------------

LEA : 123464502 Lower Merion SD

Printed 11/19/2019 10:43:52 AM

	<u>Food Service</u> <u>(51)</u>	<u>Child Care Operations</u> <u>(52)</u>	<u>Other Enterprise</u> <u>(58)</u>	<u>TOTAL</u>	<u>Internal Service</u> <u>(60)</u>
Net Increase (Decrease) in Cash Flows					
0004 Cash and Cash Equivalents Beginning of Year					
Cash and Cash Equivalents at Year End					
<hr/>					
Reconciliation of Operating Income (Loss) To Net Cash Provided by (Used For) Operating Activities					
0005 Operating Income (Loss) per REP	(586,993)			(586,993)	
Adjustments					
0051 Depreciation and Net Amortization	8,535			8,535	
0052 Provision for Uncollectible Accounts					
0053 Other Adjustments					
Effect of Changes in Assets, Liabilities, Deferred Outflows and Deferred Inflows					
0054 (Inc) Dec In Accounts Receivable (0120-0150)	1,765			1,765	
0055 Advances to Other Funds (0160)					
0056 (Inc) Dec in Inventories (0170)	(11,616)			(11,616)	
0057 (Inc) Dec in Prepaid Expenses (0180)					
0058 (Inc) Dec in Other Current or Noncurrent Assets					
0064 Deferred Outflows (0910)	152,758			152,758	
0059 Inc (Dec) in Accounts Payable (0400-0450)	(121,345)			(121,345)	
0060 Inc (Dec) in Accrued Salaries/Benefits (0461)					
0065 Inc (Dec) in Net Pension Liabilities (0570)	(454,408)			(454,408)	
0066 Inc (Dec) in Other Postemp Benefit Oblig (0560)	148,935			148,935	
0061 Inc (Dec) in Payroll Deductions/Withholding (0462)					
0062 Inc (Dec) in Unearned Revenue (0480)	2,107			2,107	
0063 Inc (Dec) in Other Current or Noncurrent Liabilities					
0067 Deferred Inflows (0950)	58,924			58,924	
Total Adjustments	(\$214,345)			(\$214,345)	
Cash Provided By (Used for) Total	(\$801,338)			(\$801,338)	
<hr/>					

COMBINED STATEMENT OF CASH FLOWS
SCHEDULE OF NONCASH INVESTING, CAPITAL, AND FINANCING ACTIVITIES

Explanation of Transaction and Balance Sheet Effect	Amount
Total	

LEA : 123464502 Lower Merion SD

Printed 11/19/2019 10:43:54 AM

Amounts Expressed in Whole Dollars	<u>Private Purpose Trust</u> <u>(71)</u>	<u>Investment Trust</u> <u>(72)</u>	<u>Pension Trust</u> <u>(73)</u>	<u>Activity</u> <u>(81)</u>
Assets And Deferred Outflows Of Resources				
Assets				
0100 Cash and Cash Equivalents				
0110 Investments	131,270		508,844	
0130 Due From Other Funds				
0147 Due from Component Unit				
0150 Other Receivables				
0170 Inventories				
0180 Prepaid Expenses (Expenditures)				
0190 Other Current Assets				
0220 Buildings and Building Improvements (Net)				
0230 Machinery, Equipment and Furniture (Net)				
Total Assets	\$131,270		\$508,844	
0910 Deferred Outflows of Resources				
Total Assets And Deferred Outflows Of Resources	\$131,270		\$508,844	

LEA : 123464502 Lower Merion SD

Printed 11/19/2019 10:43:54 AM

Amounts Expressed in Whole Dollars	<u>Other Agency</u> <u>(89)</u>	<u>Discrete Component Units</u> <u>(98)</u>	<u>Discrete Component Units</u> <u>(99)</u>	<u>Total Fiduciary Funds</u>
Assets And Deferred Outflows Of Resources				
Assets				
0100 Cash and Cash Equivalents	413,550			413,550
0110 Investments	15,102,107			15,742,221
0130 Due From Other Funds	2,107,084			2,107,084
0147 Due from Component Unit				
0150 Other Receivables				
0170 Inventories				
0180 Prepaid Expenses (Expenditures)				
0190 Other Current Assets				
0220 Buildings and Building Improvements (Net)				
0230 Machinery, Equipment and Furniture (Net)				
Total Assets	\$17,622,741			\$18,262,855
0910 Deferred Outflows of Resources				
Total Assets And Deferred Outflows Of Resources	\$17,622,741			\$18,262,855

LEA : 123464502 Lower Merion SD

Printed 11/19/2019 10:43:54 AM

Amounts Expressed in Whole Dollars	<u>Private Purpose Trust</u> (71)	<u>Investment Trust</u> (72)	<u>Pension Trust</u> (73)	<u>Activity</u> (81)
Liabilities, Deferred Inflows Of Resources And Net Position				
Liabilities				
0400 Due to Other Funds				
0411 Due to Other Governments				
0412 Due to Primary Government				
0413 Due to Component Unit				
0420 Accounts Payable				
0430 Contracts Payable				
0450 Short-Term Payables				
0461 Accrued Salaries and Benefits				
0462 Payroll Deductions and Withholding				
0480 Unearned Revenues				
0490 Other Current Liabilities				
Total Liabilities				
0950 Deferred Inflows of Resources				
Net Position				
0791 Net Investment in Capital Assets				
0009 Restricted Net Position (0792 – 0798)	131,270		508,844	
0799 Unrestricted Net Position				
Total Net Position	\$131,270		\$508,844	
Total Liabilities, Deferred Inflows Of Resources And Net Position	\$131,270		\$508,844	

LEA : 123464502 Lower Merion SD

Printed 11/19/2019 10:43:54 AM

Amounts Expressed in Whole Dollars		<u>Other Agency</u> <u>(89)</u>	<u>Discrete Component Units</u> <u>(98)</u>	<u>Discrete Component Units</u> <u>(99)</u>	<u>Total Fiduciary Funds</u>
Liabilities, Deferred Inflows Of Resources And Net Position					
Liabilities					
0400 Due to Other Funds		9,460,248			9,460,248
0411 Due to Other Governments					
0412 Due to Primary Government					
0413 Due to Component Unit					
0420 Accounts Payable					
0430 Contracts Payable					
0450 Short-Term Payables					
0461 Accrued Salaries and Benefits					
0462 Payroll Deductions and Withholding		8,162,493			8,162,493
0480 Unearned Revenues					
0490 Other Current Liabilities					
Total Liabilities		\$17,622,741			\$17,622,741
0950 Deferred Inflows of Resources					
Net Position					
0791 Net Investment in Capital Assets					
0009 Restricted Net Position (0792 – 0798)					640,114
0799 Unrestricted Net Position					
Total Net Position					\$640,114
Total Liabilities, Deferred Inflows Of Resources And Net Position		\$17,622,741			\$18,262,855

LEA : 123464502 Lower Merion SD

Printed 11/19/2019 10:43:56 AM

Amounts Expressed in Whole Dollars	<u>Private Purpose Trust</u> <u>(71)</u>	<u>Investment Trust</u> <u>(72)</u>	<u>Pension Trust</u> <u>(73)</u>	<u>Discrete Component</u> <u>Units</u> <u>(98)</u>	<u>Discrete Component</u> <u>Units</u> <u>(99)</u>	<u>Total Fiduciary</u> <u>Funds</u>
Additions						
0091 Gifts and Contributions			72,628			72,628
0092 Other Additions	2,609		9,829			12,438
Deductions						
0093 Scholarships Awarded						
0094 Other Deductions	3,000		51,043			54,043
Change In Net Position	(\$391)		\$31,414			\$31,023
0006 Net Position – Beginning of Fiscal Year	131,661		477,530			609,191
0007 Net Position Held in Trust for Pension Benefits						
Net Position - End of Fiscal Year	\$131,270		\$508,944			\$640,214

LEA : 123464502 Lower Merion SD

General Fund (10)

Printed 11/19/2019 10:43:59 AM

Page - 1 of 3

	Revenue Reported In Current Year	Current Year Tax Accrual	Prior Year Tax Accrual	Taxes Collected In Current Year
Revenue from Local Sources				
6111 Current Real Estate Taxes	218,436,469.50			218,436,469.50
6112 Interim Real Estate Taxes	1,091,819.96			1,091,819.96
6113 Public Utility Realty Taxes	218,614.42			218,614.42
6143 Current Act 511 Local Services Taxes	210,719.33	36,525.30	36,559.17	210,753.20
6153 Current Act 511 Real Estate Transfer Taxes	4,586,520.97	440,590.73	493,532.65	4,639,462.89
6411 Delinquent Real Estate Taxes	3,508,379.18	267,860.88	229,738.66	3,470,256.96
6500 Earnings on Investments	3,475,002.93			
6700 Revenues from LEA Activities	30,103.00			
6831 Federal Revenue Received from Other Pennsylvania Public LEAs	2,697.77			
6832 Federal IDEA Revenue Received as Pass Through	1,429,174.61			
6910 Rentals	89,351.15			
6941 Regular Day School Tuition	35,952.08			
6942 Summer School Tuition	172,163.41			
6980 Revenue from Community Services Activities	54,785.00			
6991 Refunds of a Prior Year Expenditure	98,588.66			
6999 Other Revenues Not Specified Above	28,682.76			
TOTAL Revenue from Local Sources	\$233,469,024.73	\$744,976.91	\$759,830.48	\$228,067,376.93

	Revenue Reported In Current Year			
<u>Revenue from State Sources</u>				
7110 Basic Education Funding	3,992,356.76			
7160 Tuition for Orphans Subsidy	118,527.41			
7271 Special Education funds for School-Aged Pupils	3,138,952.17			
7311 Pupil Transportation Subsidy	1,523,849.99			
7312 Nonpublic and Charter School Pupil Transportation Subsidy	913,990.00			
7320 Rental and Sinking Fund Payments / Building Reimbursement Subsidy	248,919.70			
7330 Health Services (Medical, Dental, Nurse, Act 25)	244,100.41			
7340 State Property Tax Reduction Allocation	3,473,709.15			
7361 School Safety and Security Grants	25,000.00			
7505 Ready to Learn Block Grant	240,611.00			
7810 State Share of Social Security and Medicare Taxes	4,578,464.40			
7820 State Share of Retirement Contributions	20,667,852.75			
TOTAL Revenue from State Sources	\$39,166,333.74			

	Revenue Reported In Current Year			
<u>Revenue from Federal Sources</u>				
8514 NCLB, Title I - Improving the Academic Achievement of the Disadvantaged	315,246.10			
8515 NCLB, Title II - Preparing, Training and Recruiting High Quality Teachers and Principals	156,243.00			
8516 NCLB, Title III - Language Instruction for Limited English Proficient and Immigrant Students	16,873.44			
8517 NCLB, Title IV - 21St Century Schools	17,841.00			
8690 Other Restricted Federal Grants-in-Aid Through the Commonwealth of PA	250.00			
8810 School-Based Access Medicaid Reimbursement Program (SBAP) Reimbursements (Access)	1,432,489.21			
8820 Medical Assistance Reimbursement for Administrative Claiming (Quarterly) Program	43,696.26			
TOTAL Revenue from Federal Sources	\$1,982,639.01			
TOTAL FROM ALL SOURCES	\$274,617,997.48	\$744,976.91	\$759,830.48	\$228,067,376.93

Revenue from Local Sources	233,469,024.73
Revenue from State Sources	39,166,333.74
Revenue from Federal Sources	1,982,639.01
Other Financing Sources	
TOTAL FROM ALL SOURCES	\$274,617,997.48

LEA : 123464502 Lower Merion SD

Printed 11/19/2019 10:44:05 AM

General Fund (10)

1000 Instruction	Total
100 <u>Personnel Services – Salaries</u>	
100 Personnel Services – Salaries	83,355,364.82
Total Personnel Services – Salaries	\$83,355,364.82
200 <u>Personnel Services – Employee Benefits</u>	
210 Group Insurance – Contracted Provider	407,791.00
220 Social Security Contributions	6,215,206.32
230 PSERS Retirement Contributions	27,938,144.26
250 Unemployment Compensation	10,223.00
260 Workers' Compensation	776,492.00
270 Group Insurance – Self-Insurance	11,637,827.07
280 Other Post-Employment Benefits (OPEB)	168,975.20
Total Personnel Services – Employee Benefits	\$47,154,658.85
300 <u>Purchased Professional and Technical Services</u>	
322 Professional Educational Services – Ius	1,936,262.28
323 Professional Educational Services – Other Educational Agencies	1,230,415.75
329 Professional Educational Services – Other	5,030.00
330 Other Professional Services	312,014.25
Total Purchased Professional and Technical Services	\$3,483,722.28
400 <u>Purchased Property Services</u>	
410 Cleaning Services	731.57
430 Repairs and Maintenance Services	(7,261.83)
440 Rentals	143,438.65
Total Purchased Property Services	\$136,908.39
500 <u>Other Purchased Services</u>	
510 Student Transportation Services	126,682.40
530 Communications	66.00
550 Printing and Binding	785.00
561 Tuition To Other School Districts Within the State	35,645.98
562 Tuition To Pennsylvania Charter Schools	1,093,859.96
563 Tuition To Nonpublic Schools	1,833,656.18
564 Tuition To Career and Technology Centers	368,199.57
566 Tuition To Institutions of Higher Education and Technical Institutes	26,037.00
567 Tuition To Approved Private Schools (APS) and PA Chartered Schools for the Deaf and Blind	1,491,735.97
568 Tuition To Private Residential Rehabilitative Institutions (PRRI) [In-State] and Detention Centers	20,602.92
569 Tuition – Other	93,824.82
580 Travel	4,773.26
594 IU Payment By Withholding for Institutionalized Children's Programs – Special Classes	7,881.11
Total Other Purchased Services	\$5,103,750.17
600 <u>Supplies</u>	
610 General Supplies	1,188,981.02
630 Food	6,649.56
640 Books and Periodicals	832,159.29
650 Supplies & Fees – Technology Related	2,546,039.79

LEA : 123464502 Lower Merion SD

Printed 11/19/2019 10:44:05 AM

General Fund (10)

1000 Instruction		<u>Total</u>
Total Supplies		\$4,573,829.66
700 <u>Property</u>		
752	Capital Equipment – Original and Additional	12,860.42
758	Capitalized Technology Software - Original	5,249.50
Total Property		\$18,109.92
800 <u>Other Objects</u>		
810	Dues and Fees	47,979.85
890	Miscellaneous Expenditures	3,026.82
Total Other Objects		\$51,006.67
Total 1000 Instruction		\$143,877,350.76

LEA : 123464502 Lower Merion SD

Printed 11/19/2019 10:44:05 AM

General Fund (10)

1100 Regular Programs – Elementary / Secondary

	Elementary	Secondary	Federal	Total
100 <u>Personnel Services – Salaries</u>				
100 Personnel Services – Salaries	27,453,777.08	32,439,652.83	295,768.80	60,189,198.71
Total Personnel Services – Salaries	\$27,453,777.08	\$32,439,652.83	\$295,768.80	\$60,189,198.71
200 <u>Personnel Services – Employee Benefits</u>				
210 Group Insurance – Contracted Provider	140,136.58	159,349.42		299,486.00
220 Social Security Contributions	2,055,621.38	2,421,793.15	11,111.21	4,488,525.74
230 PSERS Retirement Contributions	9,264,939.01	10,863,700.16	48,095.75	20,176,734.92
250 Unemployment Compensation	3,513.80	3,995.20		7,509.00
260 Workers' Compensation	266,848.80	303,425.20		570,274.00
270 Group Insurance – Self-Insurance	3,959,823.85	4,553,566.42	656.17	8,514,046.44
280 Other Post-Employment Benefits (OPEB)	54,175.00	86,450.00		140,625.00
Total Personnel Services – Employee Benefits	\$15,745,058.42	\$18,392,279.55	\$59,863.13	\$34,197,201.10
300 <u>Purchased Professional and Technical Services</u>				
322 Professional Educational Services – Ius		11,916.86	138,581.41	150,498.27
330 Other Professional Services	16,568.32	276,035.93	12,290.00	304,894.25
Total Purchased Professional and Technical Services	\$16,568.32	\$287,952.79	\$150,871.41	\$455,392.52
400 <u>Purchased Property Services</u>				
410 Cleaning Services		731.57		731.57
430 Repairs and Maintenance Services	11,601.86	(19,332.49)		(7,730.63)
440 Rentals	49,340.32	94,098.33		143,438.65
Total Purchased Property Services	\$60,942.18	\$75,497.41		\$136,439.59
500 <u>Other Purchased Services</u>				
510 Student Transportation Services	15,349.50	107,320.90		122,670.40
530 Communications			66.00	66.00
562 Tuition To Pennsylvania Charter Schools	202,674.04	381,269.53		583,943.57
568 Tuition To Private Residential Rehabilitative Institutions (PRRI) [In-State] and Detention Centers		7,434.09		7,434.09
569 Tuition – Other		93,824.82		93,824.82
580 Travel	760.09	1,588.88		2,348.97
Total Other Purchased Services	\$218,783.63	\$591,438.22	\$66.00	\$810,287.85
600 <u>Supplies</u>				
610 General Supplies	495,364.14	561,526.59	14,158.71	1,071,049.44
630 Food	1,069.66	1,570.60		2,640.26
640 Books and Periodicals	218,986.93	546,646.49	39,201.62	804,835.04
650 Supplies & Fees – Technology Related	1,417,815.88	990,011.79		2,407,827.67
Total Supplies	\$2,133,236.61	\$2,099,755.47	\$53,360.33	\$4,286,352.41
700 <u>Property</u>				
752 Capital Equipment – Original and Additional		12,860.42		12,860.42
758 Capitalized Technology Software - Original		5,249.50		5,249.50
Total Property		\$18,109.92		\$18,109.92
800 <u>Other Objects</u>				
810 Dues and Fees	5,942.05	37,230.80		43,172.85

LEA : 123464502 Lower Merion SD

Printed 11/19/2019 10:44:05 AM

General Fund (10)

1100 Regular Programs – Elementary / Secondary	<u>Elementary</u>	<u>Secondary</u>	<u>Federal</u>	<u>Total</u>
800 <u>Other Objects</u>				
890 Miscellaneous Expenditures	3,026.82			3,026.82
Total Other Objects	\$8,968.87	\$37,230.80		\$46,199.67
Total 1100 Regular Programs – Elementary / Secondary	\$45,637,335.11	\$53,941,916.99	\$559,929.67	\$100,139,181.77

LEA : 123464502 Lower Merion SD

Printed 11/19/2019 10:44:05 AM

General Fund (10)

1110 Regular Programs

	Elementary	Secondary	Federal	Total
100 <u>Personnel Services – Salaries</u>				
100 Personnel Services – Salaries	27,453,777.08	32,439,652.83	32,002.93	59,925,432.84
Total Personnel Services – Salaries	\$27,453,777.08	\$32,439,652.83	\$32,002.93	\$59,925,432.84
200 <u>Personnel Services – Employee Benefits</u>				
210 Group Insurance – Contracted Provider	140,136.58	159,349.42		299,486.00
220 Social Security Contributions	2,055,621.38	2,421,793.15	1,223.49	4,478,638.02
230 PSERS Retirement Contributions	9,264,939.01	10,863,700.16	5,349.28	20,133,988.45
250 Unemployment Compensation	3,513.80	3,995.20		7,509.00
260 Workers' Compensation	266,848.80	303,425.20		570,274.00
270 Group Insurance – Self-Insurance	3,959,823.85	4,553,566.42		8,513,390.27
280 Other Post-Employment Benefits (OPEB)	54,175.00	86,450.00		140,625.00
Total Personnel Services – Employee Benefits	\$15,745,058.42	\$18,392,279.55	\$6,572.77	\$34,143,910.74
300 <u>Purchased Professional and Technical Services</u>				
322 Professional Educational Services – Ius		11,916.86	138,581.41	150,498.27
330 Other Professional Services	16,568.32	276,035.93	3,136.00	295,740.25
Total Purchased Professional and Technical Services	\$16,568.32	\$287,952.79	\$141,717.41	\$446,238.52
400 <u>Purchased Property Services</u>				
410 Cleaning Services		731.57		731.57
430 Repairs and Maintenance Services	11,601.86	(19,332.49)		(7,730.63)
440 Rentals	49,340.32	94,098.33		143,438.65
Total Purchased Property Services	\$60,942.18	\$75,497.41		\$136,439.59
500 <u>Other Purchased Services</u>				
510 Student Transportation Services	15,349.50	107,320.90		122,670.40
530 Communications			66.00	66.00
562 Tuition To Pennsylvania Charter Schools	202,674.04	381,269.53		583,943.57
568 Tuition To Private Residential Rehabilitative Institutions (PRRI) [In-State] and Detention Centers		7,434.09		7,434.09
569 Tuition – Other		93,824.82		93,824.82
580 Travel	760.09	1,588.88		2,348.97
Total Other Purchased Services	\$218,783.63	\$591,438.22	\$66.00	\$810,287.85
600 <u>Supplies</u>				
610 General Supplies	495,364.14	561,526.59	14,158.71	1,071,049.44
630 Food	1,069.66	1,570.60		2,640.26
640 Books and Periodicals	218,986.93	546,646.49	39,201.62	804,835.04
650 Supplies & Fees – Technology Related	1,417,815.88	990,011.79		2,407,827.67
Total Supplies	\$2,133,236.61	\$2,099,755.47	\$53,360.33	\$4,286,352.41
700 <u>Property</u>				
752 Capital Equipment – Original and Additional		12,860.42		12,860.42
758 Capitalized Technology Software - Original		5,249.50		5,249.50
Total Property		\$18,109.92		\$18,109.92
800 <u>Other Objects</u>				
810 Dues and Fees	5,942.05	37,230.80		43,172.85

LEA : 123464502 Lower Merion SD

Printed 11/19/2019 10:44:05 AM

General Fund (10)

1110 Regular Programs

800 Other Objects

890 Miscellaneous Expenditures	Elementary	Secondary	Federal	Total
	3,026.82			3,026.82
Total Other Objects	\$8,968.87	\$37,230.80		\$46,199.67
Total 1110 Regular Programs	\$45,637,335.11	\$53,941,916.99	\$233,719.44	\$99,812,971.54

LEA : 123464502 Lower Merion SD

Printed 11/19/2019 10:44:05 AM

General Fund (10)

1190 Federally-Funded Regular Programs	<u>Elementary</u>	<u>Secondary</u>	<u>Federal</u>	<u>Total</u>
100 <u>Personnel Services – Salaries</u>				
100 Personnel Services – Salaries			263,765.87	263,765.87
Total Personnel Services – Salaries			\$263,765.87	\$263,765.87
200 <u>Personnel Services – Employee Benefits</u>				
220 Social Security Contributions			9,887.72	9,887.72
230 PSERS Retirement Contributions			42,746.47	42,746.47
270 Group Insurance – Self-Insurance			656.17	656.17
Total Personnel Services – Employee Benefits			\$53,290.36	\$53,290.36
300 <u>Purchased Professional and Technical Services</u>				
330 Other Professional Services			9,154.00	9,154.00
Total Purchased Professional and Technical Services			\$9,154.00	\$9,154.00
Total 1190 Federally-Funded Regular Programs			\$326,210.23	\$326,210.23

LEA : 123464502 Lower Merion SD

Printed 11/19/2019 10:44:05 AM

General Fund (10)

1200 Special Programs – Elementary / Secondary	Elementary	Secondary	Federal	Total
100 Personnel Services – Salaries				
100 Personnel Services – Salaries	12,983,453.55	8,895,934.91	540,132.27	22,419,520.73
Total Personnel Services – Salaries	\$12,983,453.55	\$8,895,934.91	\$540,132.27	\$22,419,520.73
200 Personnel Services – Employee Benefits				
210 Group Insurance – Contracted Provider	62,738.72	45,350.28		108,089.00
220 Social Security Contributions	986,883.78	664,488.27	19,831.63	1,671,203.68
230 PSERS Retirement Contributions	4,415,406.12	3,010,961.47	89,097.50	7,515,465.09
250 Unemployment Compensation	1,571.70	1,137.30		2,709.00
260 Workers' Compensation	119,461.26	86,344.74		205,806.00
270 Group Insurance – Self-Insurance	1,845,351.64	1,272,550.99		3,117,902.63
280 Other Post-Employment Benefits (OPEB)	15,750.20	12,600.00		28,350.20
Total Personnel Services – Employee Benefits	\$7,447,163.42	\$5,093,433.05	\$108,929.13	\$12,649,525.60
300 Purchased Professional and Technical Services				
322 Professional Educational Services – Ius	123,596.39	338,164.94	1,285,426.20	1,747,187.53
323 Professional Educational Services – Other Educational Agencies	5,464.26	24,200.81	1,196,605.40	1,226,270.47
329 Professional Educational Services – Other	4,500.00			4,500.00
330 Other Professional Services	650.00	650.00	4,700.00	6,000.00
Total Purchased Professional and Technical Services	\$134,210.65	\$363,015.75	\$2,486,731.60	\$2,983,958.00
400 Purchased Property Services				
430 Repairs and Maintenance Services	468.80			468.80
Total Purchased Property Services	\$468.80			\$468.80
500 Other Purchased Services				
561 Tuition To Other School Districts Within the State	6,128.37	7,344.85		13,473.22
562 Tuition To Pennsylvania Charter Schools	233,119.86	276,796.53		509,916.39
563 Tuition To Nonpublic Schools	6,395.00	1,827,261.18		1,833,656.18
567 Tuition To Approved Private Schools (APS) and PA Chartered Schools for the Deaf and Blind	388,929.69	1,092,654.21		1,481,583.90
568 Tuition To Private Residential Rehabilitative Institutions (PRRI) [In-State] and Detention Centers		5,376.43		5,376.43
580 Travel	168.40	1,505.89		1,674.29
594 IU Payment By Withholding for Institutionalized Children's Programs – Special Classes	3,940.55	3,940.56		7,881.11
Total Other Purchased Services	\$638,681.87	\$3,214,879.65		\$3,853,561.52
600 Supplies				
610 General Supplies	51,060.36	45,353.16	10,643.52	107,057.04
640 Books and Periodicals	16,725.89	8,603.55		25,329.44
650 Supplies & Fees – Technology Related	90,469.73	46,139.48		136,609.21
Total Supplies	\$158,255.98	\$100,096.19	\$10,643.52	\$268,995.69
Total 1200 Special Programs – Elementary / Secondary	\$21,362,234.27	\$17,667,359.55	\$3,146,436.52	\$42,176,030.34

LEA : 123464502 Lower Merion SD

Printed 11/19/2019 10:44:05 AM

General Fund (10)				
1210 Life Skills Support	<u>Elementary</u>	<u>Secondary</u>	<u>Federal</u>	<u>Total</u>
100 <u>Personnel Services – Salaries</u>				
100 Personnel Services – Salaries	496,466.20	440,134.88		936,601.08
Total Personnel Services – Salaries	\$496,466.20	\$440,134.88		\$936,601.08
200 <u>Personnel Services – Employee Benefits</u>				
210 Group Insurance – Contracted Provider	2,630.94	2,553.06		5,184.00
220 Social Security Contributions	37,244.80	32,523.00		69,767.80
230 PSERS Retirement Contributions	165,474.56	147,359.77		312,834.33
250 Unemployment Compensation	64.78	63.22		128.00
260 Workers' Compensation	5,009.10	4,857.90		9,867.00
270 Group Insurance – Self-Insurance	77,499.90	69,259.06		146,758.96
Total Personnel Services – Employee Benefits	\$287,924.08	\$256,616.01		\$544,540.09
300 <u>Purchased Professional and Technical Services</u>				
322 Professional Educational Services – Ius		81,557.97	204,614.95	286,172.92
Total Purchased Professional and Technical Services		\$81,557.97	\$204,614.95	\$286,172.92
500 <u>Other Purchased Services</u>				
563 Tuition To Nonpublic Schools		214,252.90		214,252.90
567 Tuition To Approved Private Schools (APS) and PA Chartered Schools for the Deaf and Blind	61,429.73	91,955.86		153,385.59
580 Travel		1,505.89		1,505.89
Total Other Purchased Services	\$61,429.73	\$307,714.65		\$369,144.38
600 <u>Supplies</u>				
610 General Supplies	2,867.51	678.36	162.97	3,708.84
640 Books and Periodicals		630.95		630.95
650 Supplies & Fees – Technology Related	7,923.96	6,701.76		14,625.72
Total Supplies	\$10,791.47	\$8,011.07	\$162.97	\$18,965.51
Total 1210 Life Skills Support	\$856,611.48	\$1,094,034.58	\$204,777.92	\$2,155,423.98

LEA : 123464502 Lower Merion SD

Printed 11/19/2019 10:44:05 AM

General Fund (10)

1220 Sensory Support	Elementary	Secondary	Federal	Total
100 Personnel Services – Salaries				
100 Personnel Services – Salaries	1,400,045.08	389,397.32		1,789,442.40
Total Personnel Services – Salaries	\$1,400,045.08	\$389,397.32		\$1,789,442.40
200 Personnel Services – Employee Benefits				
210 Group Insurance – Contracted Provider	6,854.00	2,028.00		8,882.00
220 Social Security Contributions	103,994.26	28,590.18		132,584.44
230 PSERS Retirement Contributions	472,192.57	142,152.84		614,345.41
250 Unemployment Compensation	171.00	51.00		222.00
260 Workers' Compensation	13,051.00	3,860.00		16,911.00
270 Group Insurance – Self-Insurance	191,232.80	55,040.00		246,272.80
Total Personnel Services – Employee Benefits	\$787,495.63	\$231,722.02		\$1,019,217.65
300 Purchased Professional and Technical Services				
322 Professional Educational Services – Ius		11,941.32	401,801.20	413,742.52
323 Professional Educational Services – Other Educational Agencies			267,955.50	267,955.50
Total Purchased Professional and Technical Services		\$11,941.32	\$669,756.70	\$681,698.02
500 Other Purchased Services				
561 Tuition To Other School Districts Within the State		6,386.17		6,386.17
563 Tuition To Nonpublic Schools		38,002.00		38,002.00
580 Travel	145.78			145.78
Total Other Purchased Services	\$145.78	\$44,388.17		\$44,533.95
600 Supplies				
610 General Supplies	6,650.70	796.90		7,447.60
640 Books and Periodicals	119.96	13.98		133.94
650 Supplies & Fees – Technology Related	15,098.83	3,960.50		19,059.33
Total Supplies	\$21,869.49	\$4,771.38		\$26,640.87
Total 1220 Sensory Support	\$2,209,555.98	\$682,220.21	\$669,756.70	\$3,561,532.89

LEA : 123464502 Lower Merion SD

Printed 11/19/2019 10:44:05 AM

General Fund (10)

1230 Emotional Support

	Elementary	Secondary	Federal	Total
100 <u>Personnel Services – Salaries</u>				
100 Personnel Services – Salaries	4,679,148.18	2,867,699.90	382,060.51	7,928,908.59
Total Personnel Services – Salaries	\$4,679,148.18	\$2,867,699.90	\$382,060.51	\$7,928,908.59
200 <u>Personnel Services – Employee Benefits</u>				
210 Group Insurance – Contracted Provider	22,457.80	14,397.20		36,855.00
220 Social Security Contributions	365,108.55	213,700.81	14,189.70	592,999.06
230 PSERS Retirement Contributions	1,630,449.49	961,576.62	63,457.14	2,655,483.25
250 Unemployment Compensation	563.34	361.66		925.00
260 Workers' Compensation	42,758.74	27,411.26		70,170.00
270 Group Insurance – Self-Insurance	683,017.58	403,823.28		1,086,840.86
280 Other Post-Employment Benefits (OPEB)	10,550.00			10,550.00
Total Personnel Services – Employee Benefits	\$2,754,905.50	\$1,621,270.83	\$77,646.84	\$4,453,823.17
300 <u>Purchased Professional and Technical Services</u>				
322 Professional Educational Services – Ius	123,596.39	142,468.68	366,323.31	632,388.38
323 Professional Educational Services – Other Educational Agencies	5,092.26	22,978.31	34,453.10	62,523.67
Total Purchased Professional and Technical Services	\$128,688.65	\$165,446.99	\$400,776.41	\$694,912.05
400 <u>Purchased Property Services</u>				
430 Repairs and Maintenance Services	468.80			468.80
Total Purchased Property Services	\$468.80			\$468.80
500 <u>Other Purchased Services</u>				
561 Tuition To Other School Districts Within the State	6,128.37			6,128.37
563 Tuition To Nonpublic Schools	6,395.00	887,812.51		894,207.51
567 Tuition To Approved Private Schools (APS) and PA Chartered Schools for the Deaf and Blind	188,170.00	185,652.14		373,822.14
568 Tuition To Private Residential Rehabilitative Institutions (PRRI) [In-State] and Detention Centers		2,775.03		2,775.03
580 Travel	22.62			22.62
Total Other Purchased Services	\$200,715.99	\$1,076,239.68		\$1,276,955.67
600 <u>Supplies</u>				
610 General Supplies	17,695.88	3,103.01	2,649.44	23,448.33
640 Books and Periodicals	7,307.53	108.95		7,416.48
650 Supplies & Fees – Technology Related	48,451.71	9,202.47		57,654.18
Total Supplies	\$73,455.12	\$12,414.43	\$2,649.44	\$88,518.99
Total 1230 Emotional Support	\$7,837,382.24	\$5,743,071.83	\$863,133.20	\$14,443,587.27

LEA : 123464502 Lower Merion SD

Printed 11/19/2019 10:44:05 AM

General Fund (10)

1240 Academic Support

	Elementary	Secondary	Federal	Total
100 Personnel Services – Salaries				
100 Personnel Services – Salaries	6,407,794.09	5,198,702.81	158,071.76	11,764,568.66
Total Personnel Services – Salaries	\$6,407,794.09	\$5,198,702.81	\$158,071.76	\$11,764,568.66
200 Personnel Services – Employee Benefits				
210 Group Insurance – Contracted Provider	30,795.98	26,372.02		57,168.00
220 Social Security Contributions	480,536.17	389,674.28	5,641.93	875,852.38
230 PSERS Retirement Contributions	2,147,289.50	1,759,872.24	25,640.36	3,932,802.10
250 Unemployment Compensation	772.58	661.42		1,434.00
260 Workers' Compensation	58,642.42	50,215.58		108,858.00
270 Group Insurance – Self-Insurance	893,601.36	744,428.65		1,638,030.01
280 Other Post-Employment Benefits (OPEB)	5,200.20	12,600.00		17,800.20
Total Personnel Services – Employee Benefits	\$3,616,838.21	\$2,983,824.19	\$31,282.29	\$6,631,944.69
300 Purchased Professional and Technical Services				
322 Professional Educational Services – Ius		64,581.33	183,625.02	248,206.35
323 Professional Educational Services – Other Educational Agencies	372.00	1,222.50	238,069.28	239,663.78
329 Professional Educational Services – Other	4,500.00			4,500.00
330 Other Professional Services	650.00	650.00	4,700.00	6,000.00
Total Purchased Professional and Technical Services	\$5,522.00	\$66,453.83	\$426,394.30	\$498,370.13
500 Other Purchased Services				
561 Tuition To Other School Districts Within the State		958.68		958.68
562 Tuition To Pennsylvania Charter Schools	233,119.86	276,796.53		509,916.39
563 Tuition To Nonpublic Schools		687,193.77		687,193.77
567 Tuition To Approved Private Schools (APS) and PA Chartered Schools for the Deaf and Blind		1,768.90		1,768.90
568 Tuition To Private Residential Rehabilitative Institutions (PRRI) [In-State] and Detention Centers		2,601.40		2,601.40
Total Other Purchased Services	\$233,119.86	\$969,319.28		\$1,202,439.14
600 Supplies				
610 General Supplies	13,685.02	40,774.89	5,096.11	59,556.02
640 Books and Periodicals	9,298.40	7,849.67		17,148.07
650 Supplies & Fees – Technology Related	18,591.44	26,274.75		44,866.19
Total Supplies	\$41,574.86	\$74,899.31	\$5,096.11	\$121,570.28
Total 1240 Academic Support	\$10,304,849.02	\$9,293,199.42	\$620,844.46	\$20,218,892.90

LEA : 123464502 Lower Merion SD

Printed 11/19/2019 10:44:05 AM

General Fund (10)

1241 Learning Support – Public	Elementary	Secondary	Federal	Total
100 <u>Personnel Services – Salaries</u>				
100 Personnel Services – Salaries	5,193,314.52	4,044,973.27	158,071.76	9,396,359.55
Total Personnel Services – Salaries	\$5,193,314.52	\$4,044,973.27	\$158,071.76	\$9,396,359.55
200 <u>Personnel Services – Employee Benefits</u>				
210 Group Insurance – Contracted Provider	24,953.98	20,513.02		45,467.00
220 Social Security Contributions	388,858.31	305,469.87	5,641.93	699,970.11
230 PSERS Retirement Contributions	1,744,046.07	1,376,128.20	25,640.36	3,145,814.63
250 Unemployment Compensation	625.58	514.42		1,140.00
260 Workers' Compensation	47,517.42	39,057.58		86,575.00
270 Group Insurance – Self-Insurance	722,835.44	573,639.09		1,296,474.53
280 Other Post-Employment Benefits (OPEB)	5,200.20	12,600.00		17,800.20
Total Personnel Services – Employee Benefits	\$2,934,037.00	\$2,327,922.18	\$31,282.29	\$5,293,241.47
300 <u>Purchased Professional and Technical Services</u>				
322 Professional Educational Services – Ius		64,581.33	183,625.02	248,206.35
323 Professional Educational Services – Other Educational Agencies	372.00	1,222.50	238,069.28	239,663.78
330 Other Professional Services			4,700.00	4,700.00
Total Purchased Professional and Technical Services	\$372.00	\$65,803.83	\$426,394.30	\$492,570.13
500 <u>Other Purchased Services</u>				
561 Tuition To Other School Districts Within the State		958.68		958.68
562 Tuition To Pennsylvania Charter Schools	233,119.86	276,796.53		509,916.39
563 Tuition To Nonpublic Schools		622,193.77		622,193.77
567 Tuition To Approved Private Schools (APS) and PA Chartered Schools for the Deaf and Blind		1,768.90		1,768.90
568 Tuition To Private Residential Rehabilitative Institutions (PRRI) [In-State] and Detention Centers		2,601.40		2,601.40
Total Other Purchased Services	\$233,119.86	\$904,319.28		\$1,137,439.14
600 <u>Supplies</u>				
610 General Supplies	10,416.59	40,774.89	5,096.11	56,287.59
640 Books and Periodicals	9,213.12	6,776.04		15,989.16
650 Supplies & Fees – Technology Related	15,051.94	19,854.05		34,905.99
Total Supplies	\$34,681.65	\$67,404.98	\$5,096.11	\$107,182.74
Total 1241 Learning Support – Public	\$8,395,525.03	\$7,410,423.54	\$620,844.46	\$16,426,793.03

LEA : 123464502 Lower Merion SD

Printed 11/19/2019 10:44:05 AM

General Fund (10)

1242 Learning Support – PRRI

<u>Elementary</u>	<u>Secondary</u>	<u>Federal</u>	<u>Total</u>
-------------------	------------------	----------------	--------------

500 Other Purchased Services

563 Tuition To Nonpublic Schools	65,000.00		65,000.00
----------------------------------	-----------	--	-----------

Total Other Purchased Services	\$65,000.00		\$65,000.00
---------------------------------------	--------------------	--	--------------------

Total 1242 Learning Support – PRRI	\$65,000.00		\$65,000.00
---	--------------------	--	--------------------

LEA : 123464502 Lower Merion SD

Printed 11/19/2019 10:44:05 AM

General Fund (10)

1243 Gifted Support

	Elementary	Secondary	Federal	Total
100 <u>Personnel Services – Salaries</u>				
100 Personnel Services – Salaries	1,214,479.57	1,153,729.54		2,368,209.11
Total Personnel Services – Salaries	\$1,214,479.57	\$1,153,729.54		\$2,368,209.11
200 <u>Personnel Services – Employee Benefits</u>				
210 Group Insurance – Contracted Provider	5,842.00	5,859.00		11,701.00
220 Social Security Contributions	91,677.86	84,204.41		175,882.27
230 PSERS Retirement Contributions	403,243.43	383,744.04		786,987.47
250 Unemployment Compensation	147.00	147.00		294.00
260 Workers' Compensation	11,125.00	11,158.00		22,283.00
270 Group Insurance – Self-Insurance	170,765.92	170,789.56		341,555.48
Total Personnel Services – Employee Benefits	\$682,801.21	\$655,902.01		\$1,338,703.22
300 <u>Purchased Professional and Technical Services</u>				
329 Professional Educational Services – Other	4,500.00			4,500.00
330 Other Professional Services	650.00	650.00		1,300.00
Total Purchased Professional and Technical Services	\$5,150.00	\$650.00		\$5,800.00
600 <u>Supplies</u>				
610 General Supplies	3,268.43			3,268.43
640 Books and Periodicals	85.28	1,073.63		1,158.91
650 Supplies & Fees – Technology Related	3,539.50	6,420.70		9,960.20
Total Supplies	\$6,893.21	\$7,494.33		\$14,387.54
Total 1243 Gifted Support	\$1,909,323.99	\$1,817,775.88		\$3,727,099.87

LEA : 123464502 Lower Merion SD

Printed 11/19/2019 10:44:05 AM

General Fund (10)

1260 Physical Support

	<u>Elementary</u>	<u>Secondary</u>	<u>Federal</u>	<u>Total</u>
300 <u>Purchased Professional and Technical Services</u>				
322 Professional Educational Services – Ius			31,368.55	31,368.55
323 Professional Educational Services – Other Educational Agencies			104,918.37	104,918.37
Total Purchased Professional and Technical Services			\$136,286.92	\$136,286.92
600 <u>Supplies</u>				
610 General Supplies	574.38		2,735.00	3,309.38
Total Supplies	\$574.38		\$2,735.00	\$3,309.38
Total 1260 Physical Support	\$574.38		\$139,021.92	\$139,596.30

LEA : 123464502 Lower Merion SD

Printed 11/19/2019 10:44:05 AM

General Fund (10)

1270 Multi-Handicapped Support

	<u>Elementary</u>	<u>Secondary</u>	<u>Federal</u>	<u>Total</u>
300 <u>Purchased Professional and Technical Services</u>				
322 Professional Educational Services – Ius		37,615.64	60,463.45	98,079.09
Total Purchased Professional and Technical Services		\$37,615.64	\$60,463.45	\$98,079.09
500 <u>Other Purchased Services</u>				
567 Tuition To Approved Private Schools (APS) and PA Chartered Schools for the Deaf and Blind		396,564.00		396,564.00
Total Other Purchased Services		\$396,564.00		\$396,564.00
Total 1270 Multi-Handicapped Support		\$434,179.64	\$60,463.45	\$494,643.09

LEA : 123464502 Lower Merion SD

Printed 11/19/2019 10:44:05 AM

General Fund (10)

1290 Special Programs - Other Support	<u>Elementary</u>	<u>Secondary</u>	<u>Federal</u>	<u>Total</u>
300 <u>Purchased Professional and Technical Services</u>				
322 Professional Educational Services – Ius			37,229.72	37,229.72
323 Professional Educational Services – Other Educational Agencies			551,209.15	551,209.15
Total Purchased Professional and Technical Services			\$588,438.87	\$588,438.87
500 <u>Other Purchased Services</u>				
567 Tuition To Approved Private Schools (APS) and PA Chartered Schools for the Deaf and Blind	139,329.96	416,713.31		556,043.27
594 IU Payment By Withholding for Institutionalized Children’s Programs – Special Classes	3,940.55	3,940.56		7,881.11
Total Other Purchased Services	\$143,270.51	\$420,653.87		\$563,924.38
600 <u>Supplies</u>				
610 General Supplies	9,586.87			9,586.87
650 Supplies & Fees – Technology Related	403.79			403.79
Total Supplies	\$9,990.66			\$9,990.66
Total 1290 Special Programs - Other Support	\$153,261.17	\$420,653.87	\$588,438.87	\$1,162,353.91

LEA : 123464502 Lower Merion SD

Printed 11/19/2019 10:44:05 AM

General Fund (10)

1300 Vocational Education

500 Other Purchased Services

	<u>Elementary</u>	<u>Secondary</u>	<u>Federal</u>	<u>Total</u>
564 Tuition To Career and Technology Centers		368,199.57		368,199.57
Total Other Purchased Services		\$368,199.57		\$368,199.57
Total 1300 Vocational Education		\$368,199.57		\$368,199.57

LEA : 123464502 Lower Merion SD

Printed 11/19/2019 10:44:05 AM

General Fund (10)

1400 Other Instructional Programs – Elementary / Secondary	Elementary	Secondary	Federal	Total
100 Personnel Services – Salaries				
100 Personnel Services – Salaries	481,295.65	265,349.73		746,645.38
Total Personnel Services – Salaries	\$481,295.65	\$265,349.73		\$746,645.38
200 Personnel Services – Employee Benefits				
210 Group Insurance – Contracted Provider		216.00		216.00
220 Social Security Contributions	35,896.27	19,580.63		55,476.90
230 PSERS Retirement Contributions	159,469.95	86,474.30		245,944.25
250 Unemployment Compensation		5.00		5.00
260 Workers' Compensation		412.00		412.00
270 Group Insurance – Self-Insurance		5,878.00		5,878.00
Total Personnel Services – Employee Benefits	\$195,366.22	\$112,565.93		\$307,932.15
300 Purchased Professional and Technical Services				
322 Professional Educational Services – Ius		16,562.98		16,562.98
323 Professional Educational Services – Other Educational Agencies	325.28	3,820.00		4,145.28
329 Professional Educational Services – Other		530.00		530.00
330 Other Professional Services	1,120.00			1,120.00
Total Purchased Professional and Technical Services	\$1,445.28	\$20,912.98		\$22,358.26
500 Other Purchased Services				
510 Student Transportation Services		4,012.00		4,012.00
550 Printing and Binding		785.00		785.00
561 Tuition To Other School Districts Within the State		22,172.76		22,172.76
567 Tuition To Approved Private Schools (APS) and PA Chartered Schools for the Deaf and Blind		10,152.07		10,152.07
568 Tuition To Private Residential Rehabilitative Institutions (PRRI) [In-State] and Detention Centers		7,792.40		7,792.40
580 Travel		750.00		750.00
Total Other Purchased Services		\$45,664.23		\$45,664.23
600 Supplies				
610 General Supplies	9,368.83	1,505.71		10,874.54
630 Food	2,335.30	1,674.00		4,009.30
640 Books and Periodicals	1,994.81			1,994.81
650 Supplies & Fees – Technology Related	1,602.91			1,602.91
Total Supplies	\$15,301.85	\$3,179.71		\$18,481.56
800 Other Objects				
810 Dues and Fees		4,807.00		4,807.00
Total Other Objects		\$4,807.00		\$4,807.00
Total 1400 Other Instructional Programs – Elementary / Secondary	\$693,409.00	\$452,479.58		\$1,145,888.58

LEA : 123464502 Lower Merion SD

Printed 11/19/2019 10:44:05 AM

General Fund (10)				
1420 Summer School	<u>Elementary</u>	<u>Secondary</u>	<u>Federal</u>	<u>Total</u>
100 <u>Personnel Services – Salaries</u>				
100 Personnel Services – Salaries	282,009.79	159,253.44		441,263.23
Total Personnel Services – Salaries	\$282,009.79	\$159,253.44		\$441,263.23
200 <u>Personnel Services – Employee Benefits</u>				
220 Social Security Contributions	21,049.63	11,856.86		32,906.49
230 PSERS Retirement Contributions	94,275.73	53,238.53		147,514.26
Total Personnel Services – Employee Benefits	\$115,325.36	\$65,095.39		\$180,420.75
300 <u>Purchased Professional and Technical Services</u>				
322 Professional Educational Services – Ius		16,050.00		16,050.00
330 Other Professional Services	1,120.00			1,120.00
Total Purchased Professional and Technical Services	\$1,120.00	\$16,050.00		\$17,170.00
500 <u>Other Purchased Services</u>				
550 Printing and Binding		785.00		785.00
Total Other Purchased Services		\$785.00		\$785.00
600 <u>Supplies</u>				
610 General Supplies	8,205.75	1,505.71		9,711.46
630 Food	742.50	120.00		862.50
640 Books and Periodicals	1,994.81			1,994.81
650 Supplies & Fees – Technology Related	1,602.91			1,602.91
Total Supplies	\$12,545.97	\$1,625.71		\$14,171.68
800 <u>Other Objects</u>				
810 Dues and Fees		332.00		332.00
Total Other Objects		\$332.00		\$332.00
Total 1420 Summer School	\$411,001.12	\$243,141.54		\$654,142.66

LEA : 123464502 Lower Merion SD

Printed 11/19/2019 10:44:05 AM

General Fund (10)

1430 Homebound Instruction	<u>Elementary</u>	<u>Secondary</u>	<u>Federal</u>	<u>Total</u>
100 <u>Personnel Services – Salaries</u>				
100 Personnel Services – Salaries	3,017.16	10,270.80		13,287.96
Total Personnel Services – Salaries	\$3,017.16	\$10,270.80		\$13,287.96
200 <u>Personnel Services – Employee Benefits</u>				
220 Social Security Contributions	227.63	780.88		1,008.51
230 PSERS Retirement Contributions	995.44	2,187.54		3,182.98
Total Personnel Services – Employee Benefits	\$1,223.07	\$2,968.42		\$4,191.49
Total 1430 Homebound Instruction	\$4,240.23	\$13,239.22		\$17,479.45

LEA : 123464502 Lower Merion SD

Printed 11/19/2019 10:44:05 AM

General Fund (10)

1440 Alternative Regular Education Programs	<u>Elementary</u>	<u>Secondary</u>	<u>Federal</u>	<u>Total</u>
300 <u>Purchased Professional and Technical Services</u>				
322 Professional Educational Services – Ius		512.98		512.98
323 Professional Educational Services – Other Educational Agencies	325.28	3,820.00		4,145.28
Total Purchased Professional and Technical Services	\$325.28	\$4,332.98		\$4,658.26
500 <u>Other Purchased Services</u>				
561 Tuition To Other School Districts Within the State		22,172.76		22,172.76
567 Tuition To Approved Private Schools (APS) and PA Chartered Schools for the Deaf and Blind		10,152.07		10,152.07
568 Tuition To Private Residential Rehabilitative Institutions (PRRI) [In-State] and Detention Centers		7,792.40		7,792.40
Total Other Purchased Services		\$40,117.23		\$40,117.23
Total 1440 Alternative Regular Education Programs	\$325.28	\$44,450.21		\$44,775.49

LEA : 123464502 Lower Merion SD

Printed 11/19/2019 10:44:05 AM

General Fund (10)

1441 Adjudicated / Court-Placed Programs

Elementary Secondary Federal Total

500 Other Purchased Services

561 Tuition To Other School Districts Within the State 19,501.08 19,501.08

Total Other Purchased Services \$19,501.08 \$19,501.08

Total 1441 Adjudicated / Court-Placed Programs \$19,501.08 \$19,501.08

LEA : 123464502 Lower Merion SD

Printed 11/19/2019 10:44:05 AM

General Fund (10)

1442 Alternative Education Programs	<u>Elementary</u>	<u>Secondary</u>	<u>Federal</u>	<u>Total</u>
300 <u>Purchased Professional and Technical Services</u>				
322 Professional Educational Services – Ius		512.98		512.98
323 Professional Educational Services – Other Educational Agencies	325.28	3,820.00		4,145.28
Total Purchased Professional and Technical Services	\$325.28	\$4,332.98		\$4,658.26
500 <u>Other Purchased Services</u>				
561 Tuition To Other School Districts Within the State		2,671.68		2,671.68
567 Tuition To Approved Private Schools (APS) and PA Chartered Schools for the Deaf and Blind		10,152.07		10,152.07
568 Tuition To Private Residential Rehabilitative Institutions (PRRI) [In-State] and Detention Centers		7,792.40		7,792.40
Total Other Purchased Services		\$20,616.15		\$20,616.15
Total 1442 Alternative Education Programs	\$325.28	\$24,949.13		\$25,274.41

LEA : 123464502 Lower Merion SD

Printed 11/19/2019 10:44:05 AM

General Fund (10)

1450 Instructional Programs Outside the Established School Day	<u>Elementary</u>	<u>Secondary</u>	<u>Federal</u>	<u>Total</u>
100 <u>Personnel Services – Salaries</u>				
100 Personnel Services – Salaries	196,268.70	59,078.64		255,347.34
Total Personnel Services – Salaries	\$196,268.70	\$59,078.64		\$255,347.34
200 <u>Personnel Services – Employee Benefits</u>				
220 Social Security Contributions	14,619.01	4,387.30		19,006.31
230 PSERS Retirement Contributions	64,198.78	18,734.75		82,933.53
Total Personnel Services – Employee Benefits	\$78,817.79	\$23,122.05		\$101,939.84
300 <u>Purchased Professional and Technical Services</u>				
329 Professional Educational Services – Other		530.00		530.00
Total Purchased Professional and Technical Services		\$530.00		\$530.00
500 <u>Other Purchased Services</u>				
510 Student Transportation Services		4,012.00		4,012.00
580 Travel		750.00		750.00
Total Other Purchased Services		\$4,762.00		\$4,762.00
600 <u>Supplies</u>				
610 General Supplies	1,163.08			1,163.08
630 Food	1,592.80	1,554.00		3,146.80
Total Supplies	\$2,755.88	\$1,554.00		\$4,309.88
800 <u>Other Objects</u>				
810 Dues and Fees		4,475.00		4,475.00
Total Other Objects		\$4,475.00		\$4,475.00
Total 1450 Instructional Programs Outside the Established School Day	\$277,842.37	\$93,521.69		\$371,364.06

LEA : 123464502 Lower Merion SD

Printed 11/19/2019 10:44:05 AM

General Fund (10)

1490 Additional Other Instructional Programs	<u>Elementary</u>	<u>Secondary</u>	<u>Federal</u>	<u>Total</u>
100 <u>Personnel Services – Salaries</u>				
100 Personnel Services – Salaries		36,746.85		36,746.85
Total Personnel Services – Salaries		\$36,746.85		\$36,746.85
200 <u>Personnel Services – Employee Benefits</u>				
210 Group Insurance – Contracted Provider		216.00		216.00
220 Social Security Contributions		2,555.59		2,555.59
230 PSERS Retirement Contributions		12,313.48		12,313.48
250 Unemployment Compensation		5.00		5.00
260 Workers' Compensation		412.00		412.00
270 Group Insurance – Self-Insurance		5,878.00		5,878.00
Total Personnel Services – Employee Benefits		\$21,380.07		\$21,380.07
Total 1490 Additional Other Instructional Programs		\$58,126.92		\$58,126.92

LEA : 123464502 Lower Merion SD

Printed 11/19/2019 10:44:05 AM

General Fund (10)

1500 Nonpublic School Programs

	<u>Elementary</u>	<u>Secondary</u>	<u>Federal</u>	<u>Total</u>
300 <u>Purchased Professional and Technical Services</u>				
322 Professional Educational Services – lus			22,013.50	22,013.50
Total Purchased Professional and Technical Services			\$22,013.50	\$22,013.50
Total 1500 Nonpublic School Programs			\$22,013.50	\$22,013.50

LEA : 123464502 Lower Merion SD

Printed 11/19/2019 10:44:05 AM

General Fund (10)

1700 Higher Education Programs for Secondary Students	<u>Elementary</u>	<u>Secondary</u>	<u>Federal</u>	<u>Total</u>
500 <u>Other Purchased Services</u>				
566 Tuition To Institutions of Higher Education and Technical Institutes				26,037.00
Total Other Purchased Services				\$26,037.00
Total 1700 Higher Education Programs for Secondary Students				\$26,037.00

LEA : 123464502 Lower Merion SD

Printed 11/19/2019 10:44:15 AM

General Fund (10)

2000 Support Services

Total

100 Personnel Services – Salaries		
100 Personnel Services – Salaries		37,716,017.42
Total Personnel Services – Salaries		\$37,716,017.42
200 Personnel Services – Employee Benefits		
210 Group Insurance – Contracted Provider		177,198.00
220 Social Security Contributions		2,777,081.53
230 PSERS Retirement Contributions		12,478,505.22
240 Tuition Reimbursement		297,705.27
250 Unemployment Compensation		4,444.00
260 Workers' Compensation		337,408.00
270 Group Insurance – Self-Insurance		5,095,666.33
280 Other Post-Employment Benefits (OPEB)		185,058.98
299 All Other Employee Benefits		73,080.87
Total Personnel Services – Employee Benefits		\$21,426,148.20
300 Purchased Professional and Technical Services		
322 Professional Educational Services – Ius		46,084.00
323 Professional Educational Services – Other Educational Agencies		9,158.19
329 Professional Educational Services – Other		18,100.00
330 Other Professional Services		2,934,603.64
340 Technical Services		284,723.97
360 Employee Training and Development Services		196,473.74
Total Purchased Professional and Technical Services		\$3,489,143.54
400 Purchased Property Services		
410 Cleaning Services		294,467.15
420 Utility Services		317,031.30
430 Repairs and Maintenance Services		1,606,899.03
440 Rentals		442,568.50
450 Construction Services		18,779.47
460 Extermination Services		9,321.04
490 Other Purchased Property Services		45,396.62
Total Purchased Property Services		\$2,734,463.11
500 Other Purchased Services		
513 Contracted Carriers		1,747,629.00
515 Public Carriers		15,309.45
516 Student Transportation Services From the IU		25,736.58
520 Insurance – General		47,008.62
521 Fire Insurance		349,314.00
522 Automotive Liability Insurance		202,725.00
523 General Property and Liability Insurance		270,438.00
524 Other Pupil Transportation Insurance		22,700.00
529 Other Insurance		389,204.50
530 Communications		528,682.59
549 Other Advertising/Public Relations		8,551.09
550 Printing and Binding		32,026.78

LEA : 123464502 Lower Merion SD

Printed 11/19/2019 10:44:15 AM

General Fund (10)

2000 Support Services

Total

500	<u>Other Purchased Services</u>	
580	Travel	104,506.59
595	IU Payments By Withholding	133,681.61
596	Direct Payments To Intermediate Units	9,384.65
599	Other Miscellaneous Purchased Services	41,073.04
Total Other Purchased Services		\$3,927,971.50
600	<u>Supplies</u>	
610	General Supplies	1,725,399.45
620	Energy	1,866,097.91
630	Food	34,895.17
640	Books and Periodicals	160,501.74
650	Supplies & Fees – Technology Related	1,925,089.35
Total Supplies		\$5,711,983.62
700	<u>Property</u>	
752	Capital Equipment – Original and Additional	76,969.80
762	Capitalized Equipment - Replacement	269,361.10
Total Property		\$346,330.90
800	<u>Other Objects</u>	
810	Dues and Fees	547,347.72
820	Claims and Judgments Against the LEA	28,107.00
890	Miscellaneous Expenditures	372.16
Total Other Objects		\$575,826.88
Total 2000 Support Services		\$75,927,885.17

LEA : 123464502 Lower Merion SD

Printed 11/19/2019 10:44:15 AM

General Fund (10)

2100 Support Services – Students	Elementary	Secondary	Federal	Total
100 <u>Personnel Services – Salaries</u>				
100 Personnel Services – Salaries	2,073,764.40	3,424,630.92	48,716.44	6,084,131.12
Total Personnel Services – Salaries	\$2,073,764.40	\$3,424,630.92	\$48,716.44	\$6,084,131.12
200 <u>Personnel Services – Employee Benefits</u>				
210 Group Insurance – Contracted Provider	10,225.00	16,541.00		28,931.00
220 Social Security Contributions	151,271.23	252,495.93	1,729.26	446,316.52
230 PSERS Retirement Contributions	690,896.01	1,147,008.54	8,143.04	2,025,462.40
250 Unemployment Compensation	257.00	415.00		726.00
260 Workers' Compensation	19,468.00	31,496.00		55,086.00
270 Group Insurance – Self-Insurance	288,961.55	469,252.02		829,157.49
Total Personnel Services – Employee Benefits	\$1,161,078.79	\$1,917,208.49	\$9,872.30	\$3,385,679.41
300 <u>Purchased Professional and Technical Services</u>				
322 Professional Educational Services – Ius			492.00	492.00
323 Professional Educational Services – Other Educational Agencies	136.00			136.00
330 Other Professional Services	8,200.00	32,036.35	61,222.56	101,458.91
Total Purchased Professional and Technical Services	\$8,336.00	\$32,036.35	\$61,714.56	\$102,086.91
400 <u>Purchased Property Services</u>				
410 Cleaning Services		84.00		84.00
430 Repairs and Maintenance Services	322.47	322.47		644.94
440 Rentals		10,246.26		10,246.26
Total Purchased Property Services	\$322.47	\$10,652.73		\$10,975.20
500 <u>Other Purchased Services</u>				
530 Communications	822.36	15,419.39		16,241.75
580 Travel	6,703.17	5,400.30		12,103.47
599 Other Miscellaneous Purchased Services			41,073.04	41,073.04
Total Other Purchased Services	\$7,525.53	\$20,819.69	\$41,073.04	\$69,418.26
600 <u>Supplies</u>				
610 General Supplies	36,096.98	11,904.37	2,376.26	50,377.61
630 Food	198.13	3,339.62		3,537.75
640 Books and Periodicals	11,688.51	7,749.29		19,437.80
650 Supplies & Fees – Technology Related	25,796.13	42,893.88	24,178.61	92,868.62
Total Supplies	\$73,779.75	\$65,887.16	\$26,554.87	\$166,221.78
800 <u>Other Objects</u>				
810 Dues and Fees	1,497.00	2,841.00		4,338.00
Total Other Objects	\$1,497.00	\$2,841.00		\$4,338.00
Total 2100 Support Services – Students	\$3,326,303.94	\$5,474,076.34	\$187,931.21	\$9,822,850.68

LEA : 123464502 Lower Merion SD

Printed 11/19/2019 10:44:15 AM

General Fund (10)

2110 Supervision of Student Services	Elementary	Secondary	Federal	Total
100 <u>Personnel Services – Salaries</u>				
100 Personnel Services – Salaries	510,326.73	569,971.27	48,716.44	1,129,014.44
Total Personnel Services – Salaries	\$510,326.73	\$569,971.27	\$48,716.44	\$1,129,014.44
200 <u>Personnel Services – Employee Benefits</u>				
210 Group Insurance – Contracted Provider	2,988.00	3,622.00		6,610.00
220 Social Security Contributions	35,230.01	41,421.51	1,729.26	78,380.78
230 PSERS Retirement Contributions	169,968.93	197,673.39	8,143.04	375,785.36
250 Unemployment Compensation	75.00	91.00		166.00
260 Workers' Compensation	5,690.00	6,896.00		12,586.00
270 Group Insurance – Self-Insurance	84,385.85	103,326.78		187,712.63
Total Personnel Services – Employee Benefits	\$298,337.79	\$353,030.68	\$9,872.30	\$661,240.77
300 <u>Purchased Professional and Technical Services</u>				
330 Other Professional Services		143.86	9,767.56	9,911.42
Total Purchased Professional and Technical Services		\$143.86	\$9,767.56	\$9,911.42
400 <u>Purchased Property Services</u>				
410 Cleaning Services		84.00		84.00
430 Repairs and Maintenance Services	322.47	322.47		644.94
440 Rentals		6,050.76		6,050.76
Total Purchased Property Services	\$322.47	\$6,457.23		\$6,779.70
500 <u>Other Purchased Services</u>				
530 Communications	811.62	15,194.47		16,006.09
580 Travel	6,029.08	3,844.07		9,873.15
Total Other Purchased Services	\$6,840.70	\$19,038.54		\$25,879.24
600 <u>Supplies</u>				
610 General Supplies	1,650.95	2,034.66	2,376.26	6,061.87
630 Food	198.13	187.87		386.00
640 Books and Periodicals	345.99	446.45		792.44
650 Supplies & Fees – Technology Related	17,772.27	16,991.78	24,178.61	58,942.66
Total Supplies	\$19,967.34	\$19,660.76	\$26,554.87	\$66,182.97
800 <u>Other Objects</u>				
810 Dues and Fees	987.00	987.00		1,974.00
Total Other Objects	\$987.00	\$987.00		\$1,974.00
Total 2110 Supervision of Student Services	\$836,782.03	\$969,289.34	\$94,911.17	\$1,900,982.54

LEA : 123464502 Lower Merion SD

Printed 11/19/2019 10:44:15 AM

General Fund (10)

2111 Supervision of Student Services – Head of Component	Elementary	Secondary	Federal	Total
100 Personnel Services – Salaries				
100 Personnel Services – Salaries	199,984.11	199,983.79		399,967.90
Total Personnel Services – Salaries	\$199,984.11	\$199,983.79		\$399,967.90
200 Personnel Services – Employee Benefits				
210 Group Insurance – Contracted Provider	1,178.00	1,178.00		2,356.00
220 Social Security Contributions	12,857.27	12,856.49		25,713.76
230 PSERS Retirement Contributions	66,218.60	66,218.53		132,437.13
250 Unemployment Compensation	30.00	30.00		60.00
260 Workers' Compensation	2,244.00	2,244.00		4,488.00
270 Group Insurance – Self-Insurance	34,110.21	34,110.17		68,220.38
Total Personnel Services – Employee Benefits	\$116,638.08	\$116,637.19		\$233,275.27
300 Purchased Professional and Technical Services				
330 Other Professional Services			9,767.56	9,767.56
Total Purchased Professional and Technical Services			\$9,767.56	\$9,767.56
500 Other Purchased Services				
530 Communications	811.62	622.80		1,434.42
580 Travel	425.02	457.63		882.65
Total Other Purchased Services	\$1,236.64	\$1,080.43		\$2,317.07
600 Supplies				
610 General Supplies		119.90		119.90
630 Food		147.00		147.00
640 Books and Periodicals	446.95	446.45		893.40
650 Supplies & Fees – Technology Related	458.30	458.30	24,178.61	25,095.21
Total Supplies	\$905.25	\$1,171.65	\$24,178.61	\$26,255.51
800 Other Objects				
810 Dues and Fees	680.75	680.75		1,361.50
Total Other Objects	\$680.75	\$680.75		\$1,361.50
Total 2111 Supervision of Student Services – Head of Component	\$319,444.83	\$319,553.81	\$33,946.17	\$672,944.81

LEA : 123464502 Lower Merion SD

Printed 11/19/2019 10:44:15 AM

General Fund (10)

2119 Supervision of Student Services – All Other Supervision	Elementary	Secondary	Federal	Total
100 <u>Personnel Services – Salaries</u>				
100 Personnel Services – Salaries	310,342.62	369,987.48	48,716.44	729,046.54
Total Personnel Services – Salaries	\$310,342.62	\$369,987.48	\$48,716.44	\$729,046.54
200 <u>Personnel Services – Employee Benefits</u>				
210 Group Insurance – Contracted Provider	1,810.00	2,444.00		4,254.00
220 Social Security Contributions	22,372.74	28,565.02	1,729.26	52,667.02
230 PSERS Retirement Contributions	103,750.33	131,454.86	8,143.04	243,348.23
250 Unemployment Compensation	45.00	61.00		106.00
260 Workers' Compensation	3,446.00	4,652.00		8,098.00
270 Group Insurance – Self-Insurance	50,275.64	69,216.61		119,492.25
Total Personnel Services – Employee Benefits	\$181,699.71	\$236,393.49	\$9,872.30	\$427,965.50
300 <u>Purchased Professional and Technical Services</u>				
330 Other Professional Services		143.86		143.86
Total Purchased Professional and Technical Services		\$143.86		\$143.86
400 <u>Purchased Property Services</u>				
410 Cleaning Services		84.00		84.00
430 Repairs and Maintenance Services	322.47	322.47		644.94
440 Rentals		6,050.76		6,050.76
Total Purchased Property Services	\$322.47	\$6,457.23		\$6,779.70
500 <u>Other Purchased Services</u>				
530 Communications		14,571.67		14,571.67
580 Travel	5,604.06	3,386.44		8,990.50
Total Other Purchased Services	\$5,604.06	\$17,958.11		\$23,562.17
600 <u>Supplies</u>				
610 General Supplies	1,650.95	1,914.76	2,376.26	5,941.97
630 Food	198.13	40.87		239.00
640 Books and Periodicals	(100.96)			(100.96)
650 Supplies & Fees – Technology Related	17,313.97	16,533.48		33,847.45
Total Supplies	\$19,062.09	\$18,489.11	\$2,376.26	\$39,927.46
800 <u>Other Objects</u>				
810 Dues and Fees	306.25	306.25		612.50
Total Other Objects	\$306.25	\$306.25		\$612.50
Total 2119 Supervision of Student Services – All Other Supervision	\$517,337.20	\$649,735.53	\$60,965.00	\$1,228,037.73

LEA : 123464502 Lower Merion SD

Printed 11/19/2019 10:44:15 AM

General Fund (10)

2120 Guidance Services	Elementary	Secondary	Federal	Total
100 <u>Personnel Services – Salaries</u>				
100 Personnel Services – Salaries	1,113,290.15	2,004,879.66		3,118,169.81
Total Personnel Services – Salaries	\$1,113,290.15	\$2,004,879.66		\$3,118,169.81
200 <u>Personnel Services – Employee Benefits</u>				
210 Group Insurance – Contracted Provider	5,553.00	9,500.00		15,053.00
220 Social Security Contributions	83,024.20	148,789.62		231,813.82
230 PSERS Retirement Contributions	371,049.57	666,485.67		1,037,535.24
250 Unemployment Compensation	140.00	238.00		378.00
260 Workers' Compensation	10,572.00	18,090.00		28,662.00
270 Group Insurance – Self-Insurance	154,994.28	265,260.10		420,254.38
Total Personnel Services – Employee Benefits	\$625,333.05	\$1,108,363.39		\$1,733,696.44
300 <u>Purchased Professional and Technical Services</u>				
323 Professional Educational Services – Other Educational Agencies	136.00			136.00
330 Other Professional Services		18,892.49		18,892.49
Total Purchased Professional and Technical Services	\$136.00	\$18,892.49		\$19,028.49
400 <u>Purchased Property Services</u>				
440 Rentals		4,195.50		4,195.50
Total Purchased Property Services		\$4,195.50		\$4,195.50
500 <u>Other Purchased Services</u>				
530 Communications		224.92		224.92
580 Travel	76.29	1,285.35		1,361.64
Total Other Purchased Services	\$76.29	\$1,510.27		\$1,586.56
600 <u>Supplies</u>				
610 General Supplies	1,741.07	3,002.07		4,743.14
630 Food		3,151.75		3,151.75
640 Books and Periodicals	10,297.98	6,375.34		16,673.32
650 Supplies & Fees – Technology Related	4,512.54	22,798.69		27,311.23
Total Supplies	\$16,551.59	\$35,327.85		\$51,879.44
800 <u>Other Objects</u>				
810 Dues and Fees	510.00	1,854.00		2,364.00
Total Other Objects	\$510.00	\$1,854.00		\$2,364.00
Total 2120 Guidance Services	\$1,755,897.08	\$3,175,023.16		\$4,930,920.24

LEA : 123464502 Lower Merion SD

Printed 11/19/2019 10:44:15 AM

General Fund (10)

2130 Attendance Services

Elementary Secondary Federal Total

100 <u>Personnel Services – Salaries</u>				
100 Personnel Services – Salaries				537,019.36
Total Personnel Services – Salaries				\$537,019.36
200 <u>Personnel Services – Employee Benefits</u>				
210 Group Insurance – Contracted Provider				2,165.00
220 Social Security Contributions				40,820.10
230 PSERS Retirement Contributions				179,414.81
250 Unemployment Compensation				54.00
260 Workers' Compensation				4,122.00
270 Group Insurance – Self-Insurance				70,943.92
Total Personnel Services – Employee Benefits				\$297,519.83
Total 2130 Attendance Services				\$834,539.19

LEA : 123464502 Lower Merion SD

Printed 11/19/2019 10:44:15 AM

General Fund (10)

2140 Psychological Services	Elementary	Secondary	Federal	Total
100 Personnel Services – Salaries				
100 Personnel Services – Salaries	450,147.52	849,779.99		1,299,927.51
Total Personnel Services – Salaries	\$450,147.52	\$849,779.99		\$1,299,927.51
200 Personnel Services – Employee Benefits				
210 Group Insurance – Contracted Provider	1,684.00	3,419.00		5,103.00
220 Social Security Contributions	33,017.02	62,284.80		95,301.82
230 PSERS Retirement Contributions	149,877.51	282,849.48		432,726.99
250 Unemployment Compensation	42.00	86.00		128.00
260 Workers' Compensation	3,206.00	6,510.00		9,716.00
270 Group Insurance – Self-Insurance	49,581.42	100,665.14		150,246.56
Total Personnel Services – Employee Benefits	\$237,407.95	\$455,814.42		\$693,222.37
300 Purchased Professional and Technical Services				
322 Professional Educational Services – Ius			492.00	492.00
330 Other Professional Services	8,200.00	13,000.00	51,455.00	72,655.00
Total Purchased Professional and Technical Services	\$8,200.00	\$13,000.00	\$51,947.00	\$73,147.00
500 Other Purchased Services				
530 Communications	10.74			10.74
580 Travel	597.80	270.88		868.68
599 Other Miscellaneous Purchased Services			41,073.04	41,073.04
Total Other Purchased Services	\$608.54	\$270.88	\$41,073.04	\$41,952.46
600 Supplies				
610 General Supplies	32,704.96	6,867.64		39,572.60
640 Books and Periodicals	1,044.54	927.50		1,972.04
650 Supplies & Fees – Technology Related	3,511.32	3,103.41		6,614.73
Total Supplies	\$37,260.82	\$10,898.55		\$48,159.37
Total 2140 Psychological Services	\$733,624.83	\$1,329,763.84	\$93,020.04	\$2,156,408.71

LEA : 123464502 Lower Merion SD

Printed 11/19/2019 10:44:15 AM

General Fund (10)

2200 Support Services – Instructional Staff	Elementary	Secondary	Federal	Total
100 Personnel Services – Salaries				
100 Personnel Services – Salaries	1,934,972.46	1,586,977.31	1,184.88	3,523,134.65
Total Personnel Services – Salaries	\$1,934,972.46	\$1,586,977.31	\$1,184.88	\$3,523,134.65
200 Personnel Services – Employee Benefits				
210 Group Insurance – Contracted Provider	8,295.00	6,711.00		15,006.00
220 Social Security Contributions	141,363.66	118,140.08	43.61	259,547.35
230 PSERS Retirement Contributions	641,990.62	527,840.93	198.05	1,170,029.60
240 Tuition Reimbursement	116,570.85	125,128.62		241,699.47
250 Unemployment Compensation	209.00	168.00		377.00
260 Workers' Compensation	15,795.00	12,779.00		28,574.00
270 Group Insurance – Self-Insurance	253,349.88	203,136.22		456,486.10
280 Other Post-Employment Benefits (OPEB)	15,331.03			15,331.03
Total Personnel Services – Employee Benefits	\$1,192,905.04	\$993,903.85	\$241.66	\$2,187,050.55
300 Purchased Professional and Technical Services				
322 Professional Educational Services – Ius			45,592.00	45,592.00
330 Other Professional Services	26,382.43	3,647.62	10,591.00	40,621.05
360 Employee Training and Development Services	19,941.50	96,526.74	25,755.50	142,223.74
Total Purchased Professional and Technical Services	\$46,323.93	\$100,174.36	\$81,938.50	\$228,436.79
400 Purchased Property Services				
410 Cleaning Services	84.00	84.00		168.00
430 Repairs and Maintenance Services	322.47	322.47		644.94
440 Rentals	5,410.79	7,247.46		12,658.25
Total Purchased Property Services	\$5,817.26	\$7,653.93		\$13,471.19
500 Other Purchased Services				
530 Communications	75.32	4,241.10		4,316.42
580 Travel	10,961.54	28,146.61	3,829.16	42,937.31
Total Other Purchased Services	\$11,036.86	\$32,387.71	\$3,829.16	\$47,253.73
600 Supplies				
610 General Supplies	7,560.27	9,221.02		16,781.29
630 Food	5,866.81	5,107.75	565.00	11,539.56
640 Books and Periodicals	34,023.75	81,127.18	1,801.35	116,952.28
650 Supplies & Fees – Technology Related	17,702.68	146,224.19		163,926.87
Total Supplies	\$65,153.51	\$241,680.14	\$2,366.35	\$309,200.00
800 Other Objects				
810 Dues and Fees	6,638.50	4,104.64		10,743.14
Total Other Objects	\$6,638.50	\$4,104.64		\$10,743.14
Total 2200 Support Services – Instructional Staff	\$3,262,847.56	\$2,966,881.94	\$89,560.55	\$6,319,290.05

LEA : 123464502 Lower Merion SD

Printed 11/19/2019 10:44:15 AM

General Fund (10)

2220 Technology Support Services	<u>Elementary</u>	<u>Secondary</u>	<u>Federal</u>	<u>Total</u>
600 <u>Supplies</u>				
610 General Supplies	1,363.85			1,363.85
650 Supplies & Fees – Technology Related	4,597.95			4,597.95
Total Supplies	\$5,961.80			\$5,961.80
Total 2220 Technology Support Services	\$5,961.80			\$5,961.80

LEA : 123464502 Lower Merion SD

Printed 11/19/2019 10:44:15 AM

General Fund (10)

2250 School Library Services	Elementary	Secondary	Federal	Total
100 <u>Personnel Services – Salaries</u>				
100 Personnel Services – Salaries	1,011,132.56	546,228.36		1,557,360.92
Total Personnel Services – Salaries	\$1,011,132.56	\$546,228.36		\$1,557,360.92
200 <u>Personnel Services – Employee Benefits</u>				
210 Group Insurance – Contracted Provider	5,202.00	2,762.00		7,964.00
220 Social Security Contributions	77,005.30	41,432.82		118,438.12
230 PSERS Retirement Contributions	336,988.53	181,493.32		518,481.85
250 Unemployment Compensation	131.00	69.00		200.00
260 Workers' Compensation	9,906.00	5,261.00		15,167.00
270 Group Insurance – Self-Insurance	159,041.92	82,675.92		241,717.84
Total Personnel Services – Employee Benefits	\$588,274.75	\$313,694.06		\$901,968.81
300 <u>Purchased Professional and Technical Services</u>				
330 Other Professional Services	800.30	600.00		1,400.30
Total Purchased Professional and Technical Services	\$800.30	\$600.00		\$1,400.30
600 <u>Supplies</u>				
610 General Supplies	6,612.83	7,183.14		13,795.97
640 Books and Periodicals	18,188.55	64,744.21		82,932.76
650 Supplies & Fees – Technology Related	11,085.84	75,714.97		86,800.81
Total Supplies	\$35,887.22	\$147,642.32		\$183,529.54
800 <u>Other Objects</u>				
810 Dues and Fees		376.00		376.00
Total Other Objects		\$376.00		\$376.00
Total 2250 School Library Services	\$1,636,094.83	\$1,008,540.74		\$2,644,635.57

LEA : 123464502 Lower Merion SD

Printed 11/19/2019 10:44:15 AM

General Fund (10)

2260 Instruction and Curriculum Development Services	Elementary	Secondary	Federal	Total
100 Personnel Services – Salaries				
100 Personnel Services – Salaries	856,990.66	996,277.42	430.88	1,853,698.96
Total Personnel Services – Salaries	\$856,990.66	\$996,277.42	\$430.88	\$1,853,698.96
200 Personnel Services – Employee Benefits				
210 Group Insurance – Contracted Provider	3,093.00	3,949.00		7,042.00
220 Social Security Contributions	58,998.89	73,410.15	16.02	132,425.06
230 PSERS Retirement Contributions	282,566.11	331,480.70	72.02	614,118.83
250 Unemployment Compensation	78.00	99.00		177.00
260 Workers' Compensation	5,889.00	7,518.00		13,407.00
270 Group Insurance – Self-Insurance	94,307.96	120,460.30		214,768.26
280 Other Post-Employment Benefits (OPEB)	15,331.03			15,331.03
Total Personnel Services – Employee Benefits	\$460,263.99	\$536,917.15	\$88.04	\$997,269.18
300 Purchased Professional and Technical Services				
330 Other Professional Services	9,982.13	3,047.62		13,029.75
Total Purchased Professional and Technical Services	\$9,982.13	\$3,047.62		\$13,029.75
400 Purchased Property Services				
410 Cleaning Services	84.00	84.00		168.00
430 Repairs and Maintenance Services	322.47	322.47		644.94
440 Rentals	5,410.79	7,247.46		12,658.25
Total Purchased Property Services	\$5,817.26	\$7,653.93		\$13,471.19
500 Other Purchased Services				
530 Communications	75.32	4,241.10		4,316.42
580 Travel	716.48	553.20		1,269.68
Total Other Purchased Services	\$791.80	\$4,794.30		\$5,586.10
600 Supplies				
610 General Supplies	(1,055.07)	1,480.91		425.84
630 Food	1,679.64	467.75		2,147.39
640 Books and Periodicals	10,917.74	11,751.30	1,801.35	24,470.39
650 Supplies & Fees – Technology Related	1,868.90	70,259.22		72,128.12
Total Supplies	\$13,411.21	\$83,959.18	\$1,801.35	\$99,171.74
800 Other Objects				
810 Dues and Fees	1,712.00	1,828.00		3,540.00
Total Other Objects	\$1,712.00	\$1,828.00		\$3,540.00
Total 2260 Instruction and Curriculum Development Services	\$1,348,969.05	\$1,634,477.60	\$2,320.27	\$2,985,766.92

LEA : 123464502 Lower Merion SD

Printed 11/19/2019 10:44:15 AM

General Fund (10)				
2270 Instructional Staff Professional Development Services	<u>Elementary</u>	<u>Secondary</u>	<u>Federal</u>	<u>Total</u>
100 <u>Personnel Services – Salaries</u>				
100 Personnel Services – Salaries	66,849.24	44,471.53	754.00	112,074.77
Total Personnel Services – Salaries	\$66,849.24	\$44,471.53	\$754.00	\$112,074.77
200 <u>Personnel Services – Employee Benefits</u>				
220 Social Security Contributions	5,359.47	3,297.11	27.59	8,684.17
230 PSERS Retirement Contributions	22,435.98	14,866.91	126.03	37,428.92
240 Tuition Reimbursement	116,570.85	125,128.62		241,699.47
Total Personnel Services – Employee Benefits	\$144,366.30	\$143,292.64	\$153.62	\$287,812.56
300 <u>Purchased Professional and Technical Services</u>				
330 Other Professional Services	15,600.00		10,591.00	26,191.00
360 Employee Training and Development Services	19,941.50	96,526.74	25,755.50	142,223.74
Total Purchased Professional and Technical Services	\$35,541.50	\$96,526.74	\$36,346.50	\$168,414.74
500 <u>Other Purchased Services</u>				
580 Travel	10,245.06	27,593.41	3,829.16	41,667.63
Total Other Purchased Services	\$10,245.06	\$27,593.41	\$3,829.16	\$41,667.63
600 <u>Supplies</u>				
610 General Supplies	638.66	556.97		1,195.63
630 Food	4,187.17	4,640.00	565.00	9,392.17
640 Books and Periodicals	4,917.46	4,631.67		9,549.13
650 Supplies & Fees – Technology Related	149.99	250.00		399.99
Total Supplies	\$9,893.28	\$10,078.64	\$565.00	\$20,536.92
800 <u>Other Objects</u>				
810 Dues and Fees	4,926.50	1,900.64		6,827.14
Total Other Objects	\$4,926.50	\$1,900.64		\$6,827.14
Total 2270 Instructional Staff Professional Development Services	\$271,821.88	\$323,863.60	\$41,648.28	\$637,333.76

LEA : 123464502 Lower Merion SD

Printed 11/19/2019 10:44:15 AM

General Fund (10)

2280 Nonpublic Support Services

	<u>Elementary</u>	<u>Secondary</u>	<u>Federal</u>	<u>Total</u>
300 <u>Purchased Professional and Technical Services</u>				
322 Professional Educational Services – lus			45,592.00	45,592.00
Total Purchased Professional and Technical Services			\$45,592.00	\$45,592.00
Total 2280 Nonpublic Support Services			\$45,592.00	\$45,592.00

LEA : 123464502 Lower Merion SD

Printed 11/19/2019 10:44:15 AM

General Fund (10)

2300 Support Services – Administration	Elementary	Secondary	Federal	Total
100 Personnel Services – Salaries				
100 Personnel Services – Salaries	2,713,662.04	4,037,924.43	1,261.77	7,627,930.92
Total Personnel Services – Salaries	\$2,713,662.04	\$4,037,924.43	\$1,261.77	\$7,627,930.92
200 Personnel Services – Employee Benefits				
210 Group Insurance – Contracted Provider	12,937.58	20,411.42		36,703.00
220 Social Security Contributions	191,560.14	289,510.61	44.08	536,040.84
230 PSERS Retirement Contributions	885,399.60	1,313,701.14	210.90	2,478,629.66
250 Unemployment Compensation	323.56	512.44		920.00
260 Workers' Compensation	24,633.64	38,869.36		69,888.00
270 Group Insurance – Self-Insurance	364,313.11	579,505.97		1,047,116.89
280 Other Post-Employment Benefits (OPEB)	82,332.95	875.00		83,207.95
299 All Other Employee Benefits				29,343.37
Total Personnel Services – Employee Benefits	\$1,561,500.58	\$2,243,385.94	\$254.98	\$4,281,849.71
300 Purchased Professional and Technical Services				
330 Other Professional Services	2,000.00	5,739.40		1,578,368.64
340 Technical Services				31,904.48
Total Purchased Professional and Technical Services	\$2,000.00	\$5,739.40		\$1,610,273.12
400 Purchased Property Services				
410 Cleaning Services	1,410.00	2,040.00		3,534.00
430 Repairs and Maintenance Services	1,573.44	1,455.44		3,236.10
440 Rentals	35,522.70	75,497.21		111,519.91
Total Purchased Property Services	\$38,506.14	\$78,992.65		\$118,290.01
500 Other Purchased Services				
520 Insurance – General				32,051.26
530 Communications	13,302.78	33,107.18		57,826.48
549 Other Advertising/Public Relations				8,091.09
550 Printing and Binding	1,542.00	11,756.50		31,269.84
580 Travel	2,757.65	2,036.59		14,290.72
Total Other Purchased Services	\$17,602.43	\$46,900.27		\$143,529.39
600 Supplies				
610 General Supplies	25,233.42	75,938.76		105,041.13
630 Food		3,435.39		15,813.34
640 Books and Periodicals	352.11	11,711.52		13,044.29
650 Supplies & Fees – Technology Related	16,571.04	85,860.32		141,462.30
Total Supplies	\$42,156.57	\$176,945.99		\$275,361.06
800 Other Objects				
810 Dues and Fees	3,233.00	6,483.99		36,816.99
820 Claims and Judgments Against the LEA				28,107.00
890 Miscellaneous Expenditures				148.11
Total Other Objects	\$3,233.00	\$6,483.99		\$65,072.10
Total 2300 Support Services – Administration	\$4,378,660.76	\$6,596,372.67	\$1,516.75	\$14,122,306.31

LEA : 123464502 Lower Merion SD

Printed 11/19/2019 10:44:15 AM

General Fund (10)

2310 Board Services

	<u>Elementary</u>	<u>Secondary</u>	<u>Federal</u>	<u>Total</u>
100 <u>Personnel Services – Salaries</u>				
100 Personnel Services – Salaries				9,283.00
Total Personnel Services – Salaries				\$9,283.00
200 <u>Personnel Services – Employee Benefits</u>				
220 Social Security Contributions				710.14
230 PSERS Retirement Contributions				3,103.30
Total Personnel Services – Employee Benefits				\$3,813.44
300 <u>Purchased Professional and Technical Services</u>				
330 Other Professional Services				44,128.75
Total Purchased Professional and Technical Services				\$44,128.75
500 <u>Other Purchased Services</u>				
520 Insurance – General				310.75
549 Other Advertising/Public Relations				8,091.09
580 Travel				1,172.96
Total Other Purchased Services				\$9,574.80
600 <u>Supplies</u>				
630 Food				1,903.17
Total Supplies				\$1,903.17
800 <u>Other Objects</u>				
820 Claims and Judgments Against the LEA				28,107.00
Total Other Objects				\$28,107.00
Total 2310 Board Services				\$96,810.16

LEA : 123464502 Lower Merion SD

Printed 11/19/2019 10:44:15 AM

General Fund (10)

2320 Board Treasurer Services	<u>Elementary</u>	<u>Secondary</u>	<u>Federal</u>	<u>Total</u>
500 <u>Other Purchased Services</u>				
520 Insurance – General				444.00
Total Other Purchased Services				\$444.00
Total 2320 Board Treasurer Services				\$444.00

LEA : 123464502 Lower Merion SD

Printed 11/19/2019 10:44:15 AM

General Fund (10)				
2330 Tax Assessment and Collection Services	<u>Elementary</u>	<u>Secondary</u>	<u>Federal</u>	<u>Total</u>
100 <u>Personnel Services – Salaries</u>				
100 Personnel Services – Salaries				23,475.00
Total Personnel Services – Salaries				\$23,475.00
200 <u>Personnel Services – Employee Benefits</u>				
220 Social Security Contributions				1,795.85
Total Personnel Services – Employee Benefits				\$1,795.85
300 <u>Purchased Professional and Technical Services</u>				
330 Other Professional Services				33,452.81
Total Purchased Professional and Technical Services				\$33,452.81
500 <u>Other Purchased Services</u>				
520 Insurance – General				31,296.51
530 Communications				10,461.52
550 Printing and Binding				12,113.34
Total Other Purchased Services				\$53,871.37
600 <u>Supplies</u>				
650 Supplies & Fees – Technology Related				4,133.75
Total Supplies				\$4,133.75
Total 2330 Tax Assessment and Collection Services				\$116,728.78

LEA : 123464502 Lower Merion SD

Printed 11/19/2019 10:44:15 AM

General Fund (10)

2340 Staff Relations and Negotiations Services

<u>Elementary</u>	<u>Secondary</u>	<u>Federal</u>	<u>Total</u>
-------------------	------------------	----------------	--------------

300 Purchased Professional and Technical Services

330 Other Professional Services			4,712.50
---------------------------------	--	--	----------

Total Purchased Professional and Technical Services			\$4,712.50
--	--	--	-------------------

Total 2340 Staff Relations and Negotiations Services			\$4,712.50
---	--	--	-------------------

LEA : 123464502 Lower Merion SD

Printed 11/19/2019 10:44:15 AM

General Fund (10)

2350 Legal and Accounting Services

Elementary

Secondary

Federal

Total

300 Purchased Professional and Technical Services

330 Other Professional Services

1,450,358.84

Total Purchased Professional and Technical Services				\$1,450,358.84
Total 2350 Legal and Accounting Services				\$1,450,358.84

LEA : 123464502 Lower Merion SD

Printed 11/19/2019 10:44:15 AM

General Fund (10)				
2360 Office of the Superintendent / Executive Director Services	<u>Elementary</u>	<u>Secondary</u>	<u>Federal</u>	<u>Total</u>
100 <u>Personnel Services – Salaries</u>				
100 Personnel Services – Salaries				614,976.60
Total Personnel Services – Salaries				\$614,976.60
200 <u>Personnel Services – Employee Benefits</u>				
210 Group Insurance – Contracted Provider				2,110.00
220 Social Security Contributions				35,242.71
230 PSERS Retirement Contributions				200,045.68
250 Unemployment Compensation				53.00
260 Workers' Compensation				4,017.00
270 Group Insurance – Self-Insurance				68,987.65
299 All Other Employee Benefits				29,343.37
Total Personnel Services – Employee Benefits				\$339,799.41
300 <u>Purchased Professional and Technical Services</u>				
330 Other Professional Services				14,851.25
Total Purchased Professional and Technical Services				\$14,851.25
400 <u>Purchased Property Services</u>				
410 Cleaning Services				84.00
430 Repairs and Maintenance Services				207.22
Total Purchased Property Services				\$291.22
500 <u>Other Purchased Services</u>				
530 Communications	157.48	145.36		302.84
580 Travel				8,106.32
Total Other Purchased Services	\$157.48	\$145.36		\$8,409.16
600 <u>Supplies</u>				
610 General Supplies				2,479.68
630 Food				9,512.28
640 Books and Periodicals				956.66
650 Supplies & Fees – Technology Related				1,312.44
Total Supplies				\$14,261.06
800 <u>Other Objects</u>				
810 Dues and Fees				24,560.00
890 Miscellaneous Expenditures				148.11
Total Other Objects				\$24,708.11
Total 2360 Office of the Superintendent / Executive Director Services	\$157.48	\$145.36		\$1,017,296.81

LEA : 123464502 Lower Merion SD

Printed 11/19/2019 10:44:15 AM

General Fund (10)

2370 Community Relations Services

	<u>Elementary</u>	<u>Secondary</u>	<u>Federal</u>	<u>Total</u>
100 <u>Personnel Services – Salaries</u>				
100 Personnel Services – Salaries				227,348.08
Total Personnel Services – Salaries				\$227,348.08
200 <u>Personnel Services – Employee Benefits</u>				
210 Group Insurance – Contracted Provider				1,244.00
220 Social Security Contributions				17,177.31
230 PSERS Retirement Contributions				76,169.04
250 Unemployment Compensation				31.00
260 Workers' Compensation				2,368.00
270 Group Insurance – Self-Insurance				34,310.16
Total Personnel Services – Employee Benefits				\$131,299.51
300 <u>Purchased Professional and Technical Services</u>				
330 Other Professional Services				23,125.09
340 Technical Services				31,904.48
Total Purchased Professional and Technical Services				\$55,029.57
400 <u>Purchased Property Services</u>				
440 Rentals				500.00
Total Purchased Property Services				\$500.00
500 <u>Other Purchased Services</u>				
530 Communications				955.00
550 Printing and Binding				5,858.00
580 Travel				217.20
Total Other Purchased Services				\$7,030.20
600 <u>Supplies</u>				
610 General Supplies				1,389.27
630 Food				962.50
640 Books and Periodicals				24.00
650 Supplies & Fees – Technology Related				33,584.75
Total Supplies				\$35,960.52
800 <u>Other Objects</u>				
810 Dues and Fees				460.00
Total Other Objects				\$460.00
Total 2370 Community Relations Services				\$457,627.88

LEA : 123464502 Lower Merion SD

Printed 11/19/2019 10:44:15 AM

General Fund (10)

2380 Office of the Principal Services	Elementary	Secondary	Federal	Total
100 <u>Personnel Services – Salaries</u>				
100 Personnel Services – Salaries	2,713,662.04	4,037,924.43	1,261.77	6,752,848.24
Total Personnel Services – Salaries	\$2,713,662.04	\$4,037,924.43	\$1,261.77	\$6,752,848.24
200 <u>Personnel Services – Employee Benefits</u>				
210 Group Insurance – Contracted Provider	12,937.58	20,411.42		33,349.00
220 Social Security Contributions	191,560.14	289,510.61	44.08	481,114.83
230 PSERS Retirement Contributions	885,399.60	1,313,701.14	210.90	2,199,311.64
250 Unemployment Compensation	323.56	512.44		836.00
260 Workers' Compensation	24,633.64	38,869.36		63,503.00
270 Group Insurance – Self-Insurance	364,313.11	579,505.97		943,819.08
280 Other Post-Employment Benefits (OPEB)	82,332.95	875.00		83,207.95
Total Personnel Services – Employee Benefits	\$1,561,500.58	\$2,243,385.94	\$254.98	\$3,805,141.50
300 <u>Purchased Professional and Technical Services</u>				
330 Other Professional Services	2,000.00	5,739.40		7,739.40
Total Purchased Professional and Technical Services	\$2,000.00	\$5,739.40		\$7,739.40
400 <u>Purchased Property Services</u>				
410 Cleaning Services	1,410.00	2,040.00		3,450.00
430 Repairs and Maintenance Services	1,573.44	1,455.44		3,028.88
440 Rentals	35,522.70	75,497.21		111,019.91
Total Purchased Property Services	\$38,506.14	\$78,992.65		\$117,498.79
500 <u>Other Purchased Services</u>				
530 Communications	13,145.30	32,961.82		46,107.12
550 Printing and Binding	1,542.00	11,756.50		13,298.50
580 Travel	2,757.65	2,036.59		4,794.24
Total Other Purchased Services	\$17,444.95	\$46,754.91		\$64,199.86
600 <u>Supplies</u>				
610 General Supplies	25,233.42	75,938.76		101,172.18
630 Food		3,435.39		3,435.39
640 Books and Periodicals	352.11	11,711.52		12,063.63
650 Supplies & Fees – Technology Related	16,571.04	85,860.32		102,431.36
Total Supplies	\$42,156.57	\$176,945.99		\$219,102.56
800 <u>Other Objects</u>				
810 Dues and Fees	3,233.00	6,483.99		9,716.99
Total Other Objects	\$3,233.00	\$6,483.99		\$9,716.99
Total 2380 Office of the Principal Services	\$4,378,503.28	\$6,596,227.31	\$1,516.75	\$10,976,247.34

LEA : 123464502 Lower Merion SD

Printed 11/19/2019 10:44:15 AM

General Fund (10)

2390 Other Administration Services	<u>Elementary</u>	<u>Secondary</u>	<u>Federal</u>	<u>Total</u>
800 <u>Other Objects</u>				
810 Dues and Fees				2,080.00
Total Other Objects				\$2,080.00
Total 2390 Other Administration Services				\$2,080.00

LEA : 123464502 Lower Merion SD

Printed 11/19/2019 10:44:15 AM

General Fund (10)

2400 Support Services – Pupil Health	Elementary	Secondary	Federal	Total
100 <u>Personnel Services – Salaries</u>				
100 Personnel Services – Salaries			43,972.97	2,273,535.69
Total Personnel Services – Salaries			\$43,972.97	\$2,273,535.69
200 <u>Personnel Services – Employee Benefits</u>				
210 Group Insurance – Contracted Provider				11,587.00
220 Social Security Contributions			1,628.30	168,630.63
230 PSERS Retirement Contributions			7,350.05	750,916.44
250 Unemployment Compensation				291.00
260 Workers' Compensation				22,063.00
270 Group Insurance – Self-Insurance				327,283.22
280 Other Post-Employment Benefits (OPEB)				10,800.00
Total Personnel Services – Employee Benefits			\$8,978.35	\$1,291,571.29
300 <u>Purchased Professional and Technical Services</u>				
323 Professional Educational Services – Other Educational Agencies			9,022.19	9,022.19
330 Other Professional Services				46,381.05
Total Purchased Professional and Technical Services			\$9,022.19	\$55,403.24
400 <u>Purchased Property Services</u>				
430 Repairs and Maintenance Services				1,018.91
Total Purchased Property Services				\$1,018.91
500 <u>Other Purchased Services</u>				
580 Travel				2,070.36
Total Other Purchased Services				\$2,070.36
600 <u>Supplies</u>				
610 General Supplies			11,218.29	33,461.26
640 Books and Periodicals				1,855.00
650 Supplies & Fees – Technology Related				10,558.31
Total Supplies			\$11,218.29	\$45,874.57
800 <u>Other Objects</u>				
810 Dues and Fees				708.00
Total Other Objects				\$708.00
Total 2400 Support Services – Pupil Health			\$73,191.80	\$3,670,182.06

LEA : 123464502 Lower Merion SD

Printed 11/19/2019 10:44:15 AM

General Fund (10)

2410 Supervision of Health Services	<u>Elementary</u>	<u>Secondary</u>	<u>Federal</u>	<u>Total</u>
100 <u>Personnel Services – Salaries</u>				
100 Personnel Services – Salaries				161,855.00
Total Personnel Services – Salaries				\$161,855.00
200 <u>Personnel Services – Employee Benefits</u>				
210 Group Insurance – Contracted Provider				925.00
220 Social Security Contributions				10,397.65
230 PSERS Retirement Contributions				54,232.11
250 Unemployment Compensation				23.00
260 Workers' Compensation				1,760.00
270 Group Insurance – Self-Insurance				25,090.00
Total Personnel Services – Employee Benefits				\$92,427.76
600 <u>Supplies</u>				
650 Supplies & Fees – Technology Related				291.33
Total Supplies				\$291.33
Total 2410 Supervision of Health Services				\$254,574.09

LEA : 123464502 Lower Merion SD

Printed 11/19/2019 10:44:15 AM

General Fund (10)

2411 Supervision of Health Services – Head of Component	<u>Elementary</u>	<u>Secondary</u>	<u>Federal</u>	<u>Total</u>
100 <u>Personnel Services – Salaries</u>				
100 Personnel Services – Salaries				161,855.00
Total Personnel Services – Salaries				\$161,855.00
200 <u>Personnel Services – Employee Benefits</u>				
210 Group Insurance – Contracted Provider				925.00
220 Social Security Contributions				10,397.65
230 PSERS Retirement Contributions				54,232.11
250 Unemployment Compensation				23.00
260 Workers' Compensation				1,760.00
270 Group Insurance – Self-Insurance				25,090.00
Total Personnel Services – Employee Benefits				\$92,427.76
600 <u>Supplies</u>				
650 Supplies & Fees – Technology Related				291.33
Total Supplies				\$291.33
Total 2411 Supervision of Health Services – Head of Component				\$254,574.09

LEA : 123464502 Lower Merion SD

Printed 11/19/2019 10:44:15 AM

General Fund (10)

2420 Medical Services

Elementary Secondary Federal Total

300 Purchased Professional and Technical Services

330 Other Professional Services 38,224.92

Total Purchased Professional and Technical Services \$38,224.92

600 Supplies

650 Supplies & Fees – Technology Related 4,197.00

Total Supplies \$4,197.00

Total 2420 Medical Services \$42,421.92

LEA : 123464502 Lower Merion SD

Printed 11/19/2019 10:44:15 AM

General Fund (10)

2430 Dental Services

<u>Elementary</u>	<u>Secondary</u>	<u>Federal</u>	<u>Total</u>
-------------------	------------------	----------------	--------------

300 Purchased Professional and Technical Services

330 Other Professional Services			720.00
---------------------------------	--	--	--------

Total Purchased Professional and Technical Services			\$720.00
--	--	--	-----------------

Total 2430 Dental Services			\$720.00
-----------------------------------	--	--	-----------------

LEA : 123464502 Lower Merion SD

Printed 11/19/2019 10:44:15 AM

General Fund (10)

2440 Nursing Services

	Elementary	Secondary	Federal	Total
100 Personnel Services – Salaries				
100 Personnel Services – Salaries			43,972.97	1,742,805.29
Total Personnel Services – Salaries			\$43,972.97	\$1,742,805.29
200 Personnel Services – Employee Benefits				
210 Group Insurance – Contracted Provider				8,598.00
220 Social Security Contributions			1,628.30	130,675.54
230 PSERS Retirement Contributions			7,350.05	573,910.78
250 Unemployment Compensation				216.00
260 Workers' Compensation				16,371.00
270 Group Insurance – Self-Insurance				246,139.22
280 Other Post-Employment Benefits (OPEB)				6,480.00
Total Personnel Services – Employee Benefits			\$8,978.35	\$982,390.54
300 Purchased Professional and Technical Services				
323 Professional Educational Services – Other Educational Agencies			9,022.19	9,022.19
330 Other Professional Services				6,224.13
Total Purchased Professional and Technical Services			\$9,022.19	\$15,246.32
400 Purchased Property Services				
430 Repairs and Maintenance Services				1,018.91
Total Purchased Property Services				\$1,018.91
500 Other Purchased Services				
580 Travel				2,070.36
Total Other Purchased Services				\$2,070.36
600 Supplies				
610 General Supplies			11,218.29	23,778.78
640 Books and Periodicals				1,855.00
650 Supplies & Fees – Technology Related				6,069.98
Total Supplies			\$11,218.29	\$31,703.76
800 Other Objects				
810 Dues and Fees				708.00
Total Other Objects				\$708.00
Total 2440 Nursing Services			\$73,191.80	\$2,775,943.18

LEA : 123464502 Lower Merion SD

Printed 11/19/2019 10:44:15 AM

General Fund (10)

2450 Nonpublic Health Services	<u>Elementary</u>	<u>Secondary</u>	<u>Federal</u>	<u>Total</u>
100 <u>Personnel Services – Salaries</u>				
100 Personnel Services – Salaries				368,875.40
Total Personnel Services – Salaries				\$368,875.40
200 <u>Personnel Services – Employee Benefits</u>				
210 Group Insurance – Contracted Provider				2,064.00
220 Social Security Contributions				27,557.44
230 PSERS Retirement Contributions				122,773.55
250 Unemployment Compensation				52.00
260 Workers' Compensation				3,932.00
270 Group Insurance – Self-Insurance				56,054.00
280 Other Post-Employment Benefits (OPEB)				4,320.00
Total Personnel Services – Employee Benefits				\$216,752.99
300 <u>Purchased Professional and Technical Services</u>				
330 Other Professional Services				1,212.00
Total Purchased Professional and Technical Services				\$1,212.00
600 <u>Supplies</u>				
610 General Supplies				2,502.60
Total Supplies				\$2,502.60
Total 2450 Nonpublic Health Services				\$589,342.99

LEA : 123464502 Lower Merion SD

Printed 11/19/2019 10:44:15 AM

General Fund (10)

2490 Other Health Services

Elementary

Secondary

Federal

Total

600 Supplies

610 General Supplies

7,179.88

Total Supplies				\$7,179.88
Total 2490 Other Health Services				\$7,179.88

LEA : 123464502 Lower Merion SD

Printed 11/19/2019 10:44:15 AM

General Fund (10)

2500 Support Services – Business

	<u>Elementary</u>	<u>Secondary</u>	<u>Federal</u>	<u>Total</u>
100 <u>Personnel Services – Salaries</u>				
100 Personnel Services – Salaries				729,041.69
Total Personnel Services – Salaries				\$729,041.69
200 <u>Personnel Services – Employee Benefits</u>				
210 Group Insurance – Contracted Provider				3,146.00
220 Social Security Contributions				49,832.38
230 PSERS Retirement Contributions				243,893.44
250 Unemployment Compensation				79.00
260 Workers' Compensation				5,991.00
270 Group Insurance – Self-Insurance				100,952.88
280 Other Post-Employment Benefits (OPEB)				34,350.00
299 All Other Employee Benefits				5,000.00
Total Personnel Services – Employee Benefits				\$443,244.70
300 <u>Purchased Professional and Technical Services</u>				
340 Technical Services				70,003.38
Total Purchased Professional and Technical Services				\$70,003.38
400 <u>Purchased Property Services</u>				
410 Cleaning Services				84.00
430 Repairs and Maintenance Services				1,818.00
440 Rentals				14,848.50
Total Purchased Property Services				\$16,750.50
500 <u>Other Purchased Services</u>				
530 Communications				4,858.87
550 Printing and Binding				(855.00)
580 Travel				1,052.05
Total Other Purchased Services				\$5,055.92
600 <u>Supplies</u>				
610 General Supplies				30,794.16
630 Food				320.00
650 Supplies & Fees – Technology Related				218.38
Total Supplies				\$31,332.54
800 <u>Other Objects</u>				
810 Dues and Fees				480,806.82
Total Other Objects				\$480,806.82
Total 2500 Support Services – Business				\$1,776,235.55

LEA : 123464502 Lower Merion SD

Printed 11/19/2019 10:44:15 AM

General Fund (10)				
2510 Fiscal Services	<u>Elementary</u>	<u>Secondary</u>	<u>Federal</u>	<u>Total</u>
100 <u>Personnel Services – Salaries</u>				
100 Personnel Services – Salaries				729,041.69
Total Personnel Services – Salaries				\$729,041.69
200 <u>Personnel Services – Employee Benefits</u>				
210 Group Insurance – Contracted Provider				3,146.00
220 Social Security Contributions				49,832.38
230 PSERS Retirement Contributions				243,893.44
250 Unemployment Compensation				79.00
260 Workers' Compensation				5,991.00
270 Group Insurance – Self-Insurance				100,952.88
280 Other Post-Employment Benefits (OPEB)				34,350.00
299 All Other Employee Benefits				5,000.00
Total Personnel Services – Employee Benefits				\$443,244.70
300 <u>Purchased Professional and Technical Services</u>				
340 Technical Services				70,003.38
Total Purchased Professional and Technical Services				\$70,003.38
400 <u>Purchased Property Services</u>				
410 Cleaning Services				84.00
430 Repairs and Maintenance Services				1,818.00
440 Rentals				14,848.50
Total Purchased Property Services				\$16,750.50
500 <u>Other Purchased Services</u>				
530 Communications				4,858.87
550 Printing and Binding				(855.00)
580 Travel				1,052.05
Total Other Purchased Services				\$5,055.92
600 <u>Supplies</u>				
610 General Supplies				30,794.16
630 Food				320.00
650 Supplies & Fees – Technology Related				218.38
Total Supplies				\$31,332.54
800 <u>Other Objects</u>				
810 Dues and Fees				480,806.82
Total Other Objects				\$480,806.82
Total 2510 Fiscal Services				\$1,776,235.55

LEA : 123464502 Lower Merion SD

Printed 11/19/2019 10:44:15 AM

General Fund (10)				
2511 Supervision of Fiscal Services - Head of Component	<u>Elementary</u>	<u>Secondary</u>	<u>Federal</u>	<u>Total</u>
100 <u>Personnel Services – Salaries</u>				
100 Personnel Services – Salaries				282,477.00
Total Personnel Services – Salaries				\$282,477.00
200 <u>Personnel Services – Employee Benefits</u>				
210 Group Insurance – Contracted Provider				1,665.00
220 Social Security Contributions				17,353.10
230 PSERS Retirement Contributions				94,655.02
250 Unemployment Compensation				42.00
260 Workers' Compensation				3,169.00
270 Group Insurance – Self-Insurance				47,783.66
299 All Other Employee Benefits				5,000.00
Total Personnel Services – Employee Benefits				\$169,667.78
300 <u>Purchased Professional and Technical Services</u>				
340 Technical Services				100.00
Total Purchased Professional and Technical Services				\$100.00
500 <u>Other Purchased Services</u>				
580 Travel				787.87
Total Other Purchased Services				\$787.87
600 <u>Supplies</u>				
610 General Supplies				7,303.92
630 Food				220.00
650 Supplies & Fees – Technology Related				60.38
Total Supplies				\$7,584.30
800 <u>Other Objects</u>				
810 Dues and Fees				650.00
Total Other Objects				\$650.00
Total 2511 Supervision of Fiscal Services - Head of Component				\$461,266.95

LEA : 123464502 Lower Merion SD

Printed 11/19/2019 10:44:15 AM

General Fund (10)

2513 Receiving and Disbursing Funds Services	<u>Elementary</u>	<u>Secondary</u>	<u>Federal</u>	<u>Total</u>
100 <u>Personnel Services – Salaries</u>				
100 Personnel Services – Salaries				110,721.28
Total Personnel Services – Salaries				\$110,721.28
200 <u>Personnel Services – Employee Benefits</u>				
210 Group Insurance – Contracted Provider				399.00
220 Social Security Contributions				8,173.14
230 PSERS Retirement Contributions				37,068.07
250 Unemployment Compensation				10.00
260 Workers' Compensation				761.00
270 Group Insurance – Self-Insurance				10,850.00
280 Other Post-Employment Benefits (OPEB)				34,350.00
Total Personnel Services – Employee Benefits				\$91,611.21
600 <u>Supplies</u>				
650 Supplies & Fees – Technology Related				158.00
Total Supplies				\$158.00
Total 2513 Receiving and Disbursing Funds Services				\$202,490.49

LEA : 123464502 Lower Merion SD

Printed 11/19/2019 10:44:15 AM

General Fund (10)

2514 Payroll Services

	<u>Elementary</u>	<u>Secondary</u>	<u>Federal</u>	<u>Total</u>
100 <u>Personnel Services – Salaries</u>				
100 Personnel Services – Salaries				123,195.37
Total Personnel Services – Salaries				\$123,195.37
200 <u>Personnel Services – Employee Benefits</u>				
210 Group Insurance – Contracted Provider				722.00
220 Social Security Contributions				9,186.84
230 PSERS Retirement Contributions				41,281.10
250 Unemployment Compensation				18.00
260 Workers' Compensation				1,374.00
270 Group Insurance – Self-Insurance				19,592.00
Total Personnel Services – Employee Benefits				\$72,173.94
Total 2514 Payroll Services				\$195,369.31

LEA : 123464502 Lower Merion SD

Printed 11/19/2019 10:44:15 AM

General Fund (10)				
2515 Financial Accounting Services	<u>Elementary</u>	<u>Secondary</u>	<u>Federal</u>	<u>Total</u>
100 <u>Personnel Services – Salaries</u>				
100 Personnel Services – Salaries				151,535.00
Total Personnel Services – Salaries				\$151,535.00
200 <u>Personnel Services – Employee Benefits</u>				
220 Social Security Contributions				10,705.87
230 PSERS Retirement Contributions				50,407.52
270 Group Insurance – Self-Insurance				12,932.22
Total Personnel Services – Employee Benefits				\$74,045.61
400 <u>Purchased Property Services</u>				
410 Cleaning Services				84.00
430 Repairs and Maintenance Services				1,495.53
Total Purchased Property Services				\$1,579.53
500 <u>Other Purchased Services</u>				
550 Printing and Binding				(855.00)
580 Travel				264.18
Total Other Purchased Services				(\$590.82)
600 <u>Supplies</u>				
610 General Supplies				1,787.10
Total Supplies				\$1,787.10
800 <u>Other Objects</u>				
810 Dues and Fees				210.06
Total Other Objects				\$210.06
Total 2515 Financial Accounting Services				\$228,566.48

LEA : 123464502 Lower Merion SD

Printed 11/19/2019 10:44:15 AM

General Fund (10)				
2519 Other Fiscal Services	<u>Elementary</u>	<u>Secondary</u>	<u>Federal</u>	<u>Total</u>
100 <u>Personnel Services – Salaries</u>				
100 Personnel Services – Salaries				61,113.04
Total Personnel Services – Salaries				\$61,113.04
200 <u>Personnel Services – Employee Benefits</u>				
210 Group Insurance – Contracted Provider				360.00
220 Social Security Contributions				4,413.43
230 PSERS Retirement Contributions				20,481.73
250 Unemployment Compensation				9.00
260 Workers' Compensation				687.00
270 Group Insurance – Self-Insurance				9,795.00
Total Personnel Services – Employee Benefits				\$35,746.16
300 <u>Purchased Professional and Technical Services</u>				
340 Technical Services				69,903.38
Total Purchased Professional and Technical Services				\$69,903.38
400 <u>Purchased Property Services</u>				
430 Repairs and Maintenance Services				322.47
440 Rentals				14,848.50
Total Purchased Property Services				\$15,170.97
500 <u>Other Purchased Services</u>				
530 Communications				4,858.87
Total Other Purchased Services				\$4,858.87
600 <u>Supplies</u>				
610 General Supplies				21,703.14
630 Food				100.00
Total Supplies				\$21,803.14
800 <u>Other Objects</u>				
810 Dues and Fees				479,946.76
Total Other Objects				\$479,946.76
Total 2519 Other Fiscal Services				\$688,542.32

LEA : 123464502 Lower Merion SD

Printed 11/19/2019 10:44:15 AM

General Fund (10)				
2600 Operation and Maintenance of Plant Services	<u>Elementary</u>	<u>Secondary</u>	<u>Federal</u>	<u>Total</u>
100 <u>Personnel Services – Salaries</u>				
100 Personnel Services – Salaries				7,697,337.33
Total Personnel Services – Salaries				\$7,697,337.33
200 <u>Personnel Services – Employee Benefits</u>				
210 Group Insurance – Contracted Provider				36,353.00
220 Social Security Contributions				583,930.16
230 PSERS Retirement Contributions				2,579,960.88
250 Unemployment Compensation				911.00
260 Workers' Compensation				69,219.00
270 Group Insurance – Self-Insurance				1,011,105.60
299 All Other Employee Benefits				1,475.00
Total Personnel Services – Employee Benefits				\$4,282,954.64
300 <u>Purchased Professional and Technical Services</u>				
330 Other Professional Services				1,040,999.74
Total Purchased Professional and Technical Services				\$1,040,999.74
400 <u>Purchased Property Services</u>				
410 Cleaning Services				290,597.15
420 Utility Services				317,031.30
430 Repairs and Maintenance Services				965,440.84
440 Rentals				260,641.78
450 Construction Services				18,779.47
460 Extermination Services				9,321.04
490 Other Purchased Property Services				43,746.62
Total Purchased Property Services				\$1,905,558.20
500 <u>Other Purchased Services</u>				
521 Fire Insurance				349,314.00
522 Automotive Liability Insurance				43,011.00
523 General Property and Liability Insurance				270,438.00
529 Other Insurance				389,204.50
530 Communications				264,506.79
550 Printing and Binding				366.94
580 Travel				4,456.50
Total Other Purchased Services				\$1,321,297.73
600 <u>Supplies</u>				
610 General Supplies	559,410.96	549,578.50		1,108,989.46
620 Energy				1,437,541.84
640 Books and Periodicals				474.59
650 Supplies & Fees – Technology Related				103,324.60
Total Supplies				\$2,650,330.49
700 <u>Property</u>				
752 Capital Equipment – Original and Additional				32,822.15
762 Capitalized Equipment - Replacement				269,361.10
Total Property				\$302,183.25

LEA : 123464502 Lower Merion SD

Printed 11/19/2019 10:44:15 AM

General Fund (10)

2600 Operation and Maintenance of Plant Services	<u>Elementary</u>	<u>Secondary</u>	<u>Federal</u>	<u>Total</u>
800 <u>Other Objects</u>				
810 Dues and Fees				6,492.60
Total Other Objects				\$6,492.60
Total 2600 Operation and Maintenance of Plant Services	\$559,410.96	\$549,578.50		\$19,207,153.98

LEA : 123464502 Lower Merion SD

Printed 11/19/2019 10:44:15 AM

General Fund (10)

2610 Supervision of Operation and Maintenance of Plant Services	<u>Elementary</u>	<u>Secondary</u>	<u>Federal</u>	<u>Total</u>
100 <u>Personnel Services – Salaries</u>				
100 Personnel Services – Salaries				1,031,261.35
Total Personnel Services – Salaries				\$1,031,261.35
200 <u>Personnel Services – Employee Benefits</u>				
210 Group Insurance – Contracted Provider				4,716.00
220 Social Security Contributions				78,147.80
230 PSERS Retirement Contributions				339,673.07
250 Unemployment Compensation				118.00
260 Workers' Compensation				8,980.00
270 Group Insurance – Self-Insurance				138,806.30
Total Personnel Services – Employee Benefits				\$570,441.17
300 <u>Purchased Professional and Technical Services</u>				
330 Other Professional Services				6,054.00
Total Purchased Professional and Technical Services				\$6,054.00
400 <u>Purchased Property Services</u>				
440 Rentals				3,989.09
Total Purchased Property Services				\$3,989.09
500 <u>Other Purchased Services</u>				
530 Communications				151.57
580 Travel				3,385.35
Total Other Purchased Services				\$3,536.92
600 <u>Supplies</u>				
650 Supplies & Fees – Technology Related				24,892.09
Total Supplies				\$24,892.09
Total 2610 Supervision of Operation and Maintenance of Plant Services				\$1,640,174.62

LEA : 123464502 Lower Merion SD

Printed 11/19/2019 10:44:15 AM

General Fund (10)

2611 Supervision of Operation and Maintenance of Plant Services – Head of Component	<u>Elementary</u>	<u>Secondary</u>	<u>Federal</u>	<u>Total</u>
100 <u>Personnel Services – Salaries</u>				
100 Personnel Services – Salaries				150,000.00
Total Personnel Services – Salaries				\$150,000.00
200 <u>Personnel Services – Employee Benefits</u>				
210 Group Insurance – Contracted Provider				884.00
220 Social Security Contributions				10,397.09
230 PSERS Retirement Contributions				50,262.91
250 Unemployment Compensation				22.00
260 Workers' Compensation				1,683.00
270 Group Insurance – Self-Insurance				23,993.00
Total Personnel Services – Employee Benefits				\$87,242.00
300 <u>Purchased Professional and Technical Services</u>				
330 Other Professional Services				6,054.00
Total Purchased Professional and Technical Services				\$6,054.00
400 <u>Purchased Property Services</u>				
440 Rentals				2,476.51
Total Purchased Property Services				\$2,476.51
500 <u>Other Purchased Services</u>				
580 Travel				1,184.30
Total Other Purchased Services				\$1,184.30
Total 2611 Supervision of Operation and Maintenance of Plant Services – Head of Component				\$246,956.81

LEA : 123464502 Lower Merion SD

Printed 11/19/2019 10:44:15 AM

General Fund (10)

2619 Supervision of Operation and Maintenance of Plant Services – All Other Supervision	<u>Elementary</u>	<u>Secondary</u>	<u>Federal</u>	<u>Total</u>
100 <u>Personnel Services – Salaries</u>				
100 Personnel Services – Salaries				881,261.35
Total Personnel Services – Salaries				\$881,261.35
200 <u>Personnel Services – Employee Benefits</u>				
210 Group Insurance – Contracted Provider				3,832.00
220 Social Security Contributions				67,750.71
230 PSERS Retirement Contributions				289,410.16
250 Unemployment Compensation				96.00
260 Workers' Compensation				7,297.00
270 Group Insurance – Self-Insurance				114,813.30
Total Personnel Services – Employee Benefits				\$483,199.17
400 <u>Purchased Property Services</u>				
440 Rentals				1,512.58
Total Purchased Property Services				\$1,512.58
500 <u>Other Purchased Services</u>				
530 Communications				151.57
580 Travel				2,201.05
Total Other Purchased Services				\$2,352.62
600 <u>Supplies</u>				
650 Supplies & Fees – Technology Related				24,892.09
Total Supplies				\$24,892.09
Total 2619 Supervision of Operation and Maintenance of Plant Services – All Other Supervision				\$1,393,217.81

LEA : 123464502 Lower Merion SD

Printed 11/19/2019 10:44:15 AM

General Fund (10)				
2620 Operation of Buildings Services	<u>Elementary</u>	<u>Secondary</u>	<u>Federal</u>	<u>Total</u>
100 <u>Personnel Services – Salaries</u>				
100 Personnel Services – Salaries				6,062,908.49
Total Personnel Services – Salaries				\$6,062,908.49
200 <u>Personnel Services – Employee Benefits</u>				
210 Group Insurance – Contracted Provider				29,229.00
220 Social Security Contributions				460,989.88
230 PSERS Retirement Contributions				2,040,253.16
250 Unemployment Compensation				733.00
260 Workers' Compensation				55,653.00
270 Group Insurance – Self-Insurance				806,181.22
299 All Other Employee Benefits				1,475.00
Total Personnel Services – Employee Benefits				\$3,394,514.26
300 <u>Purchased Professional and Technical Services</u>				
330 Other Professional Services				590,815.56
Total Purchased Professional and Technical Services				\$590,815.56
400 <u>Purchased Property Services</u>				
410 Cleaning Services				6,000.00
420 Utility Services				317,031.30
430 Repairs and Maintenance Services				700,879.83
440 Rentals				225,193.35
450 Construction Services				18,779.47
460 Extermination Services				9,321.04
490 Other Purchased Property Services				1,650.00
Total Purchased Property Services				\$1,278,854.99
500 <u>Other Purchased Services</u>				
521 Fire Insurance				349,314.00
522 Automotive Liability Insurance				43,011.00
523 General Property and Liability Insurance				270,438.00
529 Other Insurance				388,704.50
530 Communications				143,098.56
580 Travel				709.88
Total Other Purchased Services				\$1,195,275.94
600 <u>Supplies</u>				
610 General Supplies	466,365.30	434,783.18		901,148.48
620 Energy				1,437,541.84
650 Supplies & Fees – Technology Related				922.97
Total Supplies	\$466,365.30	\$434,783.18		\$2,339,613.29
700 <u>Property</u>				
752 Capital Equipment – Original and Additional				5,353.53
762 Capitalized Equipment - Replacement				30,867.56
Total Property				\$36,221.09
800 <u>Other Objects</u>				

LEA : 123464502 Lower Merion SD

Printed 11/19/2019 10:44:15 AM

General Fund (10)

2620 Operation of Buildings Services	<u>Elementary</u>	<u>Secondary</u>	<u>Federal</u>	<u>Total</u>
800 <u>Other Objects</u>				
810 Dues and Fees				100.00
Total Other Objects				\$100.00
Total 2620 Operation of Buildings Services	\$466,365.30	\$434,783.18		\$14,898,303.62

LEA : 123464502 Lower Merion SD

Printed 11/19/2019 10:44:15 AM

General Fund (10)				
2630 Care and Upkeep of Grounds Services	<u>Elementary</u>	<u>Secondary</u>	<u>Federal</u>	<u>Total</u>
100 <u>Personnel Services – Salaries</u>				
100 Personnel Services – Salaries				603,167.49
Total Personnel Services – Salaries				\$603,167.49
200 <u>Personnel Services – Employee Benefits</u>				
210 Group Insurance – Contracted Provider				2,408.00
220 Social Security Contributions				44,792.48
230 PSERS Retirement Contributions				200,034.65
250 Unemployment Compensation				60.00
260 Workers' Compensation				4,586.00
270 Group Insurance – Self-Insurance				66,118.08
Total Personnel Services – Employee Benefits				\$317,999.21
400 <u>Purchased Property Services</u>				
410 Cleaning Services				282,351.19
430 Repairs and Maintenance Services				238,674.83
440 Rentals				31,459.34
Total Purchased Property Services				\$552,485.36
600 <u>Supplies</u>				
610 General Supplies	72,289.87	95,692.45		167,982.32
650 Supplies & Fees – Technology Related				0.36
Total Supplies	\$72,289.87	\$95,692.45		\$167,982.68
700 <u>Property</u>				
752 Capital Equipment – Original and Additional				15,848.00
762 Capitalized Equipment - Replacement				(17,964.46)
Total Property				(\$2,116.46)
Total 2630 Care and Upkeep of Grounds Services	\$72,289.87	\$95,692.45		\$1,639,518.28

LEA : 123464502 Lower Merion SD

Printed 11/19/2019 10:44:15 AM

General Fund (10)

2650 Vehicle Operation and Maintenance Services (Other Than Student Transportation Vehicles)	<u>Elementary</u>	<u>Secondary</u>	<u>Federal</u>	<u>Total</u>
400 <u>Purchased Property Services</u>				
430 Repairs and Maintenance Services				5,238.02
Total Purchased Property Services				\$5,238.02
600 <u>Supplies</u>				
610 General Supplies	900.95	831.65		1,732.60
Total Supplies	\$900.95	\$831.65		\$1,732.60
Total 2650 Vehicle Operation and Maintenance Services (Other Than Student Transportation Vehicles)	\$900.95	\$831.65		\$6,970.62

LEA : 123464502 Lower Merion SD

Printed 11/19/2019 10:44:15 AM

General Fund (10)

2660 Safety and Security Services	<u>Elementary</u>	<u>Secondary</u>	<u>Federal</u>	<u>Total</u>
400 <u>Purchased Property Services</u>				
410 Cleaning Services				2,245.96
430 Repairs and Maintenance Services				20,648.16
490 Other Purchased Property Services				42,096.62
Total Purchased Property Services				\$64,990.74
600 <u>Supplies</u>				
610 General Supplies	13,294.02	12,215.06		25,509.08
Total Supplies	\$13,294.02	\$12,215.06		\$25,509.08
Total 2660 Safety and Security Services	\$13,294.02	\$12,215.06		\$90,499.82

LEA : 123464502 Lower Merion SD

Printed 11/19/2019 10:44:15 AM

General Fund (10)

2690 Other Operation and Maintenance of Plant Services	<u>Elementary</u>	<u>Secondary</u>	<u>Federal</u>	<u>Total</u>
300 <u>Purchased Professional and Technical Services</u>				
330 Other Professional Services				444,130.18
Total Purchased Professional and Technical Services				\$444,130.18
500 <u>Other Purchased Services</u>				
529 Other Insurance				500.00
530 Communications				121,256.66
550 Printing and Binding				366.94
580 Travel				361.27
Total Other Purchased Services				\$122,484.87
600 <u>Supplies</u>				
610 General Supplies	6,560.82	6,056.16		12,616.98
640 Books and Periodicals				474.59
650 Supplies & Fees – Technology Related				77,509.18
Total Supplies	\$6,560.82	\$6,056.16		\$90,600.75
700 <u>Property</u>				
752 Capital Equipment – Original and Additional				11,620.62
762 Capitalized Equipment - Replacement				256,458.00
Total Property				\$268,078.62
800 <u>Other Objects</u>				
810 Dues and Fees				6,392.60
Total Other Objects				\$6,392.60
Total 2690 Other Operation and Maintenance of Plant Services	\$6,560.82	\$6,056.16		\$931,687.02

LEA : 123464502 Lower Merion SD

Printed 11/19/2019 10:44:15 AM

General Fund (10)

2700 Student Transportation Services

Elementary Secondary Federal Total

100 <u>Personnel Services – Salaries</u>				
100 Personnel Services – Salaries				6,800,021.68
Total Personnel Services – Salaries				\$6,800,021.68
200 <u>Personnel Services – Employee Benefits</u>				
210 Group Insurance – Contracted Provider				31,333.00
220 Social Security Contributions				507,617.68
230 PSERS Retirement Contributions				2,268,969.56
250 Unemployment Compensation				785.00
260 Workers' Compensation				59,665.00
270 Group Insurance – Self-Insurance				914,570.48
280 Other Post-Employment Benefits (OPEB)				37,020.00
Total Personnel Services – Employee Benefits				\$3,819,960.72
300 <u>Purchased Professional and Technical Services</u>				
330 Other Professional Services				27,335.60
Total Purchased Professional and Technical Services				\$27,335.60
400 <u>Purchased Property Services</u>				
430 Repairs and Maintenance Services				189,033.24
440 Rentals				30,245.12
490 Other Purchased Property Services				1,650.00
Total Purchased Property Services				\$220,928.36
500 <u>Other Purchased Services</u>				
513 Contracted Carriers				1,747,629.00
515 Public Carriers				15,309.45
516 Student Transportation Services From the IU				25,736.58
522 Automotive Liability Insurance				159,714.00
524 Other Pupil Transportation Insurance				22,700.00
530 Communications				30,623.80
550 Printing and Binding				1,245.00
580 Travel				13,004.48
Total Other Purchased Services				\$2,015,962.31
600 <u>Supplies</u>				
610 General Supplies				350,164.09
620 Energy				428,556.07
630 Food				84.16
640 Books and Periodicals				40.25
650 Supplies & Fees – Technology Related				48,319.39
Total Supplies				\$827,163.96
700 <u>Property</u>				
752 Capital Equipment – Original and Additional				44,147.65
Total Property				\$44,147.65
800 <u>Other Objects</u>				

LEA : 123464502 Lower Merion SD

Printed 11/19/2019 10:44:15 AM

General Fund (10)

2700 Student Transportation Services	<u>Elementary</u>	<u>Secondary</u>	<u>Federal</u>	<u>Total</u>
800 <u>Other Objects</u>				
810 Dues and Fees				2,158.40
890 Miscellaneous Expenditures				224.05
Total Other Objects				\$2,382.45
Total 2700 Student Transportation Services				\$13,757,902.73

LEA : 123464502 Lower Merion SD

Printed 11/19/2019 10:44:15 AM

General Fund (10)

2710 Supervision of Student Transportation Services

Elementary Secondary Federal Total

100 <u>Personnel Services – Salaries</u>				
100 Personnel Services – Salaries				671,457.02
Total Personnel Services – Salaries				\$671,457.02
200 <u>Personnel Services – Employee Benefits</u>				
210 Group Insurance – Contracted Provider				3,653.00
220 Social Security Contributions				51,002.94
230 PSERS Retirement Contributions				221,295.28
250 Unemployment Compensation				91.00
260 Workers' Compensation				6,956.00
270 Group Insurance – Self-Insurance				104,043.86
280 Other Post-Employment Benefits (OPEB)				33,345.00
Total Personnel Services – Employee Benefits				\$420,387.08
300 <u>Purchased Professional and Technical Services</u>				
330 Other Professional Services				7,980.00
Total Purchased Professional and Technical Services				\$7,980.00
400 <u>Purchased Property Services</u>				
440 Rentals				2,744.51
Total Purchased Property Services				\$2,744.51
500 <u>Other Purchased Services</u>				
530 Communications				297.49
550 Printing and Binding				1,245.00
580 Travel				3,355.10
Total Other Purchased Services				\$4,897.59
600 <u>Supplies</u>				
610 General Supplies				10,496.70
630 Food				84.16
650 Supplies & Fees – Technology Related				18,266.05
Total Supplies				\$28,846.91
800 <u>Other Objects</u>				
810 Dues and Fees				1,600.00
Total Other Objects				\$1,600.00
Total 2710 Supervision of Student Transportation Services				\$1,137,913.11

LEA : 123464502 Lower Merion SD

Printed 11/19/2019 10:44:15 AM

General Fund (10)

2711 Supervision of Student Transportation Services – Head of Component	<u>Elementary</u>	<u>Secondary</u>	<u>Federal</u>	<u>Total</u>
100 <u>Personnel Services – Salaries</u>				
100 Personnel Services – Salaries				186,385.46
Total Personnel Services – Salaries				\$186,385.46
200 <u>Personnel Services – Employee Benefits</u>				
210 Group Insurance – Contracted Provider				1,095.00
220 Social Security Contributions				13,918.80
230 PSERS Retirement Contributions				62,455.50
250 Unemployment Compensation				27.00
260 Workers' Compensation				2,086.00
270 Group Insurance – Self-Insurance				29,744.00
Total Personnel Services – Employee Benefits				\$109,326.30
400 <u>Purchased Property Services</u>				
440 Rentals				1,549.71
Total Purchased Property Services				\$1,549.71
500 <u>Other Purchased Services</u>				
580 Travel				825.49
Total Other Purchased Services				\$825.49
600 <u>Supplies</u>				
610 General Supplies				4,060.56
650 Supplies & Fees – Technology Related				5.90
Total Supplies				\$4,066.46
800 <u>Other Objects</u>				
810 Dues and Fees				1,600.00
Total Other Objects				\$1,600.00
Total 2711 Supervision of Student Transportation Services – Head of Component				\$303,753.42

LEA : 123464502 Lower Merion SD

Printed 11/19/2019 10:44:15 AM

General Fund (10)

2719 Supervision of Student Transportation Services – All Other Supervision	<u>Elementary</u>	<u>Secondary</u>	<u>Federal</u>	<u>Total</u>
100 <u>Personnel Services – Salaries</u>				
100 Personnel Services – Salaries				485,071.56
Total Personnel Services – Salaries				\$485,071.56
200 <u>Personnel Services – Employee Benefits</u>				
210 Group Insurance – Contracted Provider				2,558.00
220 Social Security Contributions				37,084.14
230 PSERS Retirement Contributions				158,839.78
250 Unemployment Compensation				64.00
260 Workers' Compensation				4,870.00
270 Group Insurance – Self-Insurance				74,299.86
280 Other Post-Employment Benefits (OPEB)				33,345.00
Total Personnel Services – Employee Benefits				\$311,060.78
300 <u>Purchased Professional and Technical Services</u>				
330 Other Professional Services				7,980.00
Total Purchased Professional and Technical Services				\$7,980.00
400 <u>Purchased Property Services</u>				
440 Rentals				1,194.80
Total Purchased Property Services				\$1,194.80
500 <u>Other Purchased Services</u>				
530 Communications				297.49
550 Printing and Binding				1,245.00
580 Travel				2,529.61
Total Other Purchased Services				\$4,072.10
600 <u>Supplies</u>				
610 General Supplies				6,436.14
630 Food				84.16
650 Supplies & Fees – Technology Related				18,260.15
Total Supplies				\$24,780.45
Total 2719 Supervision of Student Transportation Services – All Other Supervision				\$834,159.69

LEA : 123464502 Lower Merion SD

Printed 11/19/2019 10:44:15 AM

General Fund (10)

2720 Vehicle Operation Services	Elementary	Secondary	Federal	Total
100 <u>Personnel Services – Salaries</u>				
100 Personnel Services – Salaries				4,456,880.66
Total Personnel Services – Salaries				\$4,456,880.66
200 <u>Personnel Services – Employee Benefits</u>				
210 Group Insurance – Contracted Provider				20,166.30
220 Social Security Contributions				331,812.26
230 PSERS Retirement Contributions				1,488,777.41
250 Unemployment Compensation				505.96
260 Workers' Compensation				38,400.96
270 Group Insurance – Self-Insurance				589,953.39
280 Other Post-Employment Benefits (OPEB)				2,946.77
Total Personnel Services – Employee Benefits				\$2,472,563.05
300 <u>Purchased Professional and Technical Services</u>				
330 Other Professional Services				15,520.11
Total Purchased Professional and Technical Services				\$15,520.11
400 <u>Purchased Property Services</u>				
430 Repairs and Maintenance Services				4,372.04
440 Rentals				17,941.19
Total Purchased Property Services				\$22,313.23
500 <u>Other Purchased Services</u>				
513 Contracted Carriers				1,401,320.47
515 Public Carriers				12,275.74
516 Student Transportation Services From the IU				20,636.64
522 Automotive Liability Insurance				128,065.22
524 Other Pupil Transportation Insurance				18,201.79
530 Communications				24,316.88
580 Travel				6,573.41
Total Other Purchased Services				\$1,611,390.15
600 <u>Supplies</u>				
610 General Supplies				18,390.91
620 Energy				320,067.46
640 Books and Periodicals				32.27
650 Supplies & Fees – Technology Related				4,542.81
Total Supplies				\$343,033.45
800 <u>Other Objects</u>				
810 Dues and Fees				48.11
890 Miscellaneous Expenditures				179.65
Total Other Objects				\$227.76
Total 2720 Vehicle Operation Services				\$8,921,928.41

LEA : 123464502 Lower Merion SD

Printed 11/19/2019 10:44:15 AM

General Fund (10)

2730 Monitoring Services

Elementary Secondary Federal Total

600 <u>Supplies</u>				
650 Supplies & Fees – Technology Related				7,642.14

Total Supplies				\$7,642.14
Total 2730 Monitoring Services				\$7,642.14

LEA : 123464502 Lower Merion SD

Printed 11/19/2019 10:44:15 AM

General Fund (10)				
2740 Vehicle Servicing and Maintenance Services	<u>Elementary</u>	<u>Secondary</u>	<u>Federal</u>	<u>Total</u>
100 <u>Personnel Services – Salaries</u>				
100 Personnel Services – Salaries				542,866.44
Total Personnel Services – Salaries				\$542,866.44
200 <u>Personnel Services – Employee Benefits</u>				
210 Group Insurance – Contracted Provider				2,370.00
220 Social Security Contributions				40,805.45
230 PSERS Retirement Contributions				181,798.30
250 Unemployment Compensation				59.00
260 Workers' Compensation				4,513.00
270 Group Insurance – Self-Insurance				70,433.96
Total Personnel Services – Employee Benefits				\$299,979.71
400 <u>Purchased Property Services</u>				
430 Repairs and Maintenance Services				183,580.74
440 Rentals				5,125.61
490 Other Purchased Property Services				1,650.00
Total Purchased Property Services				\$190,356.35
500 <u>Other Purchased Services</u>				
580 Travel				569.15
Total Other Purchased Services				\$569.15
600 <u>Supplies</u>				
610 General Supplies				315,608.44
620 Energy				29,363.29
650 Supplies & Fees – Technology Related				14,355.65
Total Supplies				\$359,327.38
700 <u>Property</u>				
752 Capital Equipment – Original and Additional				44,147.65
Total Property				\$44,147.65
Total 2740 Vehicle Servicing and Maintenance Services				\$1,437,246.68

LEA : 123464502 Lower Merion SD

Printed 11/19/2019 10:44:15 AM

General Fund (10)

2750 Nonpublic Transportation	Elementary	Secondary	Federal	Total
100 <u>Personnel Services – Salaries</u>				
100 Personnel Services – Salaries				1,101,429.55
Total Personnel Services – Salaries				\$1,101,429.55
200 <u>Personnel Services – Employee Benefits</u>				
210 Group Insurance – Contracted Provider				4,983.70
220 Social Security Contributions				82,000.81
230 PSERS Retirement Contributions				367,921.77
250 Unemployment Compensation				125.04
260 Workers' Compensation				9,490.04
270 Group Insurance – Self-Insurance				145,795.27
280 Other Post-Employment Benefits (OPEB)				728.23
Total Personnel Services – Employee Benefits				\$611,044.86
300 <u>Purchased Professional and Technical Services</u>				
330 Other Professional Services				3,835.49
Total Purchased Professional and Technical Services				\$3,835.49
400 <u>Purchased Property Services</u>				
430 Repairs and Maintenance Services				1,080.46
440 Rentals				4,433.81
Total Purchased Property Services				\$5,514.27
500 <u>Other Purchased Services</u>				
513 Contracted Carriers				346,308.53
515 Public Carriers				3,033.71
516 Student Transportation Services From the IU				5,099.94
522 Automotive Liability Insurance				31,648.78
524 Other Pupil Transportation Insurance				4,498.21
530 Communications				6,009.43
580 Travel				1,624.49
Total Other Purchased Services				\$398,223.09
600 <u>Supplies</u>				
610 General Supplies				4,544.95
620 Energy				79,098.32
640 Books and Periodicals				7.98
650 Supplies & Fees – Technology Related				1,122.67
Total Supplies				\$84,773.92
800 <u>Other Objects</u>				
810 Dues and Fees				11.89
890 Miscellaneous Expenditures				44.40
Total Other Objects				\$56.29
Total 2750 Nonpublic Transportation				\$2,204,877.47

LEA : 123464502 Lower Merion SD

Printed 11/19/2019 10:44:15 AM

General Fund (10)

2790 Other Student Transportation Services	<u>Elementary</u>	<u>Secondary</u>	<u>Federal</u>	<u>Total</u>
100 <u>Personnel Services – Salaries</u>				
100 Personnel Services – Salaries				27,388.01
Total Personnel Services – Salaries				\$27,388.01
200 <u>Personnel Services – Employee Benefits</u>				
210 Group Insurance – Contracted Provider				160.00
220 Social Security Contributions				1,996.22
230 PSERS Retirement Contributions				9,176.80
250 Unemployment Compensation				4.00
260 Workers' Compensation				305.00
270 Group Insurance – Self-Insurance				4,344.00
Total Personnel Services – Employee Benefits				\$15,986.02
500 <u>Other Purchased Services</u>				
580 Travel				882.33
Total Other Purchased Services				\$882.33
600 <u>Supplies</u>				
610 General Supplies				1,123.09
620 Energy				27.00
650 Supplies & Fees – Technology Related				2,390.07
Total Supplies				\$3,540.16
800 <u>Other Objects</u>				
810 Dues and Fees				498.40
Total Other Objects				\$498.40
Total 2790 Other Student Transportation Services				\$48,294.92

LEA : 123464502 Lower Merion SD

Printed 11/19/2019 10:44:15 AM

General Fund (10)

2800 Support Services – Central

	<u>Elementary</u>	<u>Secondary</u>	<u>Federal</u>	<u>Total</u>
100 <u>Personnel Services – Salaries</u>				
100 Personnel Services – Salaries				2,580,161.58
Total Personnel Services – Salaries				\$2,580,161.58
200 <u>Personnel Services – Employee Benefits</u>				
210 Group Insurance – Contracted Provider				14,139.00
220 Social Security Contributions				194,566.66
230 PSERS Retirement Contributions				860,185.83
240 Tuition Reimbursement				56,005.80
250 Unemployment Compensation				355.00
260 Workers' Compensation				26,922.00
270 Group Insurance – Self-Insurance				408,993.67
299 All Other Employee Benefits				37,262.50
Total Personnel Services – Employee Benefits				\$1,598,430.46
300 <u>Purchased Professional and Technical Services</u>				
329 Professional Educational Services – Other				18,100.00
330 Other Professional Services				99,438.65
340 Technical Services				182,816.11
360 Employee Training and Development Services				54,250.00
Total Purchased Professional and Technical Services				\$354,604.76
400 <u>Purchased Property Services</u>				
430 Repairs and Maintenance Services				445,062.06
440 Rentals				2,408.68
Total Purchased Property Services				\$447,470.74
500 <u>Other Purchased Services</u>				
520 Insurance – General				14,957.36
530 Communications				150,308.48
549 Other Advertising/Public Relations				460.00
580 Travel				14,591.70
Total Other Purchased Services				\$180,317.54
600 <u>Supplies</u>				
610 General Supplies				29,790.45
630 Food				3,600.36
640 Books and Periodicals				8,697.53
650 Supplies & Fees – Technology Related				1,364,410.88
Total Supplies				\$1,406,499.22
800 <u>Other Objects</u>				
810 Dues and Fees				5,283.77
Total Other Objects				\$5,283.77
Total 2800 Support Services – Central				\$6,572,768.07

LEA : 123464502 Lower Merion SD

Printed 11/19/2019 10:44:15 AM

General Fund (10)				
2810 Planning, Research, Development and Evaluation Services	<u>Elementary</u>	<u>Secondary</u>	<u>Federal</u>	<u>Total</u>
100 <u>Personnel Services – Salaries</u>				
100 Personnel Services – Salaries				133,272.29
Total Personnel Services – Salaries				\$133,272.29
200 <u>Personnel Services – Employee Benefits</u>				
210 Group Insurance – Contracted Provider				773.00
220 Social Security Contributions				10,063.69
230 PSERS Retirement Contributions				44,656.89
250 Unemployment Compensation				19.00
260 Workers' Compensation				1,471.00
270 Group Insurance – Self-Insurance				20,975.00
Total Personnel Services – Employee Benefits				\$77,958.58
300 <u>Purchased Professional and Technical Services</u>				
329 Professional Educational Services – Other				18,100.00
330 Other Professional Services				53,221.41
Total Purchased Professional and Technical Services				\$71,321.41
400 <u>Purchased Property Services</u>				
430 Repairs and Maintenance Services				567.00
Total Purchased Property Services				\$567.00
500 <u>Other Purchased Services</u>				
520 Insurance – General				196,358.00
580 Travel				4,796.29
Total Other Purchased Services				\$201,154.29
600 <u>Supplies</u>				
610 General Supplies				1,248.98
630 Food				1,640.00
640 Books and Periodicals				8,173.31
650 Supplies & Fees – Technology Related				7,794.74
Total Supplies				\$18,857.03
800 <u>Other Objects</u>				
810 Dues and Fees				1,838.59
Total Other Objects				\$1,838.59
Total 2810 Planning, Research, Development and Evaluation Services				\$504,969.19

LEA : 123464502 Lower Merion SD

Printed 11/19/2019 10:44:15 AM

General Fund (10)				
2830 Staff Services	<u>Elementary</u>	<u>Secondary</u>	<u>Federal</u>	<u>Total</u>
100 <u>Personnel Services – Salaries</u>				
100 Personnel Services – Salaries				661,507.42
Total Personnel Services – Salaries				\$661,507.42
200 <u>Personnel Services – Employee Benefits</u>				
210 Group Insurance – Contracted Provider				3,448.00
220 Social Security Contributions				53,408.09
230 PSERS Retirement Contributions				221,150.82
240 Tuition Reimbursement				56,005.80
250 Unemployment Compensation				87.00
260 Workers' Compensation				6,567.00
270 Group Insurance – Self-Insurance				112,342.61
299 All Other Employee Benefits				37,262.50
Total Personnel Services – Employee Benefits				\$490,271.82
300 <u>Purchased Professional and Technical Services</u>				
330 Other Professional Services				46,217.24
360 Employee Training and Development Services				54,250.00
Total Purchased Professional and Technical Services				\$100,467.24
400 <u>Purchased Property Services</u>				
440 Rentals				968.84
Total Purchased Property Services				\$968.84
500 <u>Other Purchased Services</u>				
530 Communications				1,364.88
549 Other Advertising/Public Relations				460.00
580 Travel				1,725.57
Total Other Purchased Services				\$3,550.45
600 <u>Supplies</u>				
610 General Supplies				14,738.74
630 Food				1,886.20
650 Supplies & Fees – Technology Related				162,633.11
Total Supplies				\$179,258.05
800 <u>Other Objects</u>				
810 Dues and Fees				1,530.68
Total Other Objects				\$1,530.68
Total 2830 Staff Services				\$1,437,554.50

LEA : 123464502 Lower Merion SD

Printed 11/19/2019 10:44:15 AM

General Fund (10)

2831 Supervision of Staff Services

Elementary Secondary Federal Total

100 <u>Personnel Services – Salaries</u>				
100 Personnel Services – Salaries				162,078.10
Total Personnel Services – Salaries				\$162,078.10
200 <u>Personnel Services – Employee Benefits</u>				
210 Group Insurance – Contracted Provider				955.00
220 Social Security Contributions				11,633.39
230 PSERS Retirement Contributions				53,976.55
250 Unemployment Compensation				24.00
260 Workers' Compensation				1,819.00
270 Group Insurance – Self-Insurance				26,189.80
Total Personnel Services – Employee Benefits				\$94,597.74
Total 2831 Supervision of Staff Services				\$256,675.84

LEA : 123464502 Lower Merion SD

Printed 11/19/2019 10:44:15 AM

General Fund (10)

2832 Recruitment and Placement Services	Elementary	Secondary	Federal	Total
100 <u>Personnel Services – Salaries</u>				
100 Personnel Services – Salaries				498,244.40
Total Personnel Services – Salaries				\$498,244.40
200 <u>Personnel Services – Employee Benefits</u>				
210 Group Insurance – Contracted Provider				2,493.00
220 Social Security Contributions				39,914.80
230 PSERS Retirement Contributions				166,778.15
250 Unemployment Compensation				63.00
260 Workers' Compensation				4,748.00
270 Group Insurance – Self-Insurance				86,152.81
299 All Other Employee Benefits				37,262.50
Total Personnel Services – Employee Benefits				\$337,412.26
300 <u>Purchased Professional and Technical Services</u>				
330 Other Professional Services				46,217.24
Total Purchased Professional and Technical Services				\$46,217.24
400 <u>Purchased Property Services</u>				
440 Rentals				968.84
Total Purchased Property Services				\$968.84
500 <u>Other Purchased Services</u>				
530 Communications				1,364.88
549 Other Advertising/Public Relations				460.00
580 Travel				1,725.57
Total Other Purchased Services				\$3,550.45
600 <u>Supplies</u>				
610 General Supplies				14,738.74
630 Food				1,886.20
650 Supplies & Fees – Technology Related				162,633.11
Total Supplies				\$179,258.05
800 <u>Other Objects</u>				
810 Dues and Fees				1,530.68
Total Other Objects				\$1,530.68
Total 2832 Recruitment and Placement Services				\$1,067,181.92

LEA : 123464502 Lower Merion SD

Printed 11/19/2019 10:44:15 AM

General Fund (10)

2834 Staff Development Services – Non-Instructional, Certified Staff Only	<u>Elementary</u>	<u>Secondary</u>	<u>Federal</u>	<u>Total</u>
200 <u>Personnel Services – Employee Benefits</u>				
220 Social Security Contributions				1,771.79
240 Tuition Reimbursement				49,599.00
Total Personnel Services – Employee Benefits				\$51,370.79
300 <u>Purchased Professional and Technical Services</u>				
360 Employee Training and Development Services				10,917.18
Total Purchased Professional and Technical Services				\$10,917.18
Total 2834 Staff Development Services – Non-Instructional, Certified Staff Only				\$62,287.97

LEA : 123464502 Lower Merion SD

Printed 11/19/2019 10:44:15 AM

General Fund (10)

2836 Staff Development Services – Non-Instructional, Non-Certified Staff Only	<u>Elementary</u>	<u>Secondary</u>	<u>Federal</u>	<u>Total</u>
100 <u>Personnel Services – Salaries</u>				
100 Personnel Services – Salaries				1,184.92
Total Personnel Services – Salaries				\$1,184.92
200 <u>Personnel Services – Employee Benefits</u>				
220 Social Security Contributions				88.11
230 PSERS Retirement Contributions				396.12
240 Tuition Reimbursement				6,406.80
Total Personnel Services – Employee Benefits				\$6,891.03
300 <u>Purchased Professional and Technical Services</u>				
360 Employee Training and Development Services				43,332.82
Total Purchased Professional and Technical Services				\$43,332.82
Total 2836 Staff Development Services – Non-Instructional, Non-Certified Staff Only				\$51,408.77

LEA : 123464502 Lower Merion SD

Printed 11/19/2019 10:44:15 AM

General Fund (10)				
2840 Data Processing Services				
	<u>Elementary</u>	<u>Secondary</u>	<u>Federal</u>	<u>Total</u>
100 <u>Personnel Services – Salaries</u>				
100 Personnel Services – Salaries				1,785,381.87
Total Personnel Services – Salaries				\$1,785,381.87
200 <u>Personnel Services – Employee Benefits</u>				
210 Group Insurance – Contracted Provider				9,918.00
220 Social Security Contributions				131,094.88
230 PSERS Retirement Contributions				594,378.12
250 Unemployment Compensation				249.00
260 Workers' Compensation				18,884.00
270 Group Insurance – Self-Insurance				275,676.06
Total Personnel Services – Employee Benefits				\$1,030,200.06
300 <u>Purchased Professional and Technical Services</u>				
340 Technical Services				182,816.11
Total Purchased Professional and Technical Services				\$182,816.11
400 <u>Purchased Property Services</u>				
430 Repairs and Maintenance Services				444,495.06
440 Rentals				1,439.84
Total Purchased Property Services				\$445,934.90
500 <u>Other Purchased Services</u>				
520 Insurance – General				(181,400.64)
530 Communications				148,943.60
580 Travel				8,069.84
Total Other Purchased Services				(\$24,387.20)
600 <u>Supplies</u>				
610 General Supplies				13,802.73
630 Food				74.16
640 Books and Periodicals				524.22
650 Supplies & Fees – Technology Related				1,193,983.03
Total Supplies				\$1,208,384.14
800 <u>Other Objects</u>				
810 Dues and Fees				1,914.50
Total Other Objects				\$1,914.50
Total 2840 Data Processing Services				\$4,630,244.38

LEA : 123464502 Lower Merion SD

Printed 11/19/2019 10:44:15 AM

General Fund (10)				
2900 Other Support Services	<u>Elementary</u>	<u>Secondary</u>	<u>Federal</u>	<u>Total</u>
100 <u>Personnel Services – Salaries</u>				
100 Personnel Services – Salaries				400,722.76
Total Personnel Services – Salaries				\$400,722.76
200 <u>Personnel Services – Employee Benefits</u>				
220 Social Security Contributions				30,599.31
230 PSERS Retirement Contributions				100,457.41
280 Other Post-Employment Benefits (OPEB)				4,350.00
Total Personnel Services – Employee Benefits				\$135,406.72
500 <u>Other Purchased Services</u>				
595 IU Payments By Withholding				133,681.61
596 Direct Payments To Intermediate Units				9,384.65
Total Other Purchased Services				\$143,066.26
Total 2900 Other Support Services				\$679,195.74

LEA : 123464502 Lower Merion SD

Printed 11/19/2019 10:44:15 AM

General Fund (10)

2910 Support Services Not Listed Elsewhere In the 2000 Series

Elementary Secondary Federal Total

100 <u>Personnel Services – Salaries</u>				
100 Personnel Services – Salaries				400,722.76
Total Personnel Services – Salaries				\$400,722.76
200 <u>Personnel Services – Employee Benefits</u>				
220 Social Security Contributions				30,599.31
230 PSERS Retirement Contributions				100,457.41
280 Other Post-Employment Benefits (OPEB)				4,350.00
Total Personnel Services – Employee Benefits				\$135,406.72
500 <u>Other Purchased Services</u>				
595 IU Payments By Withholding				133,681.61
596 Direct Payments To Intermediate Units				9,384.65
Total Other Purchased Services				\$143,066.26
Total 2910 Support Services Not Listed Elsewhere In the 2000 Series				\$679,195.74

LEA : 123464502 Lower Merion SD

Printed 11/19/2019 10:44:23 AM

General Fund (10)

3000 Operation of Non-Instructional Services	Total
100 <u>Personnel Services – Salaries</u>	
100 Personnel Services – Salaries	3,104,126.33
Total Personnel Services – Salaries	\$3,104,126.33
200 <u>Personnel Services – Employee Benefits</u>	
210 Group Insurance – Contracted Provider	1,981.80
220 Social Security Contributions	232,305.80
230 PSERS Retirement Contributions	940,335.02
250 Unemployment Compensation	49.48
260 Workers' Compensation	3,775.88
270 Group Insurance – Self-Insurance	62,572.15
280 Other Post-Employment Benefits (OPEB)	12,700.00
Total Personnel Services – Employee Benefits	\$1,253,720.13
300 <u>Purchased Professional and Technical Services</u>	
330 Other Professional Services	504,194.80
Total Purchased Professional and Technical Services	\$504,194.80
400 <u>Purchased Property Services</u>	
430 Repairs and Maintenance Services	40,859.78
440 Rentals	86,883.97
Total Purchased Property Services	\$127,743.75
500 <u>Other Purchased Services</u>	
510 Student Transportation Services	196,842.26
520 Insurance – General	33,677.00
530 Communications	25.50
580 Travel	27,804.69
Total Other Purchased Services	\$258,349.45
600 <u>Supplies</u>	
610 General Supplies	318,358.79
630 Food	24.00
650 Supplies & Fees – Technology Related	10,301.20
Total Supplies	\$328,683.99
800 <u>Other Objects</u>	
810 Dues and Fees	50,975.05
Total Other Objects	\$50,975.05
Total 3000 Operation of Non-Instructional Services	\$5,627,793.50

LEA : 123464502 Lower Merion SD

Printed 11/19/2019 10:44:23 AM

General Fund (10)				
3200 Student Activities	<u>Elementary</u>	<u>Secondary</u>	<u>Federal</u>	<u>Total</u>
100 <u>Personnel Services – Salaries</u>				
100 Personnel Services – Salaries				3,104,126.33
Total Personnel Services – Salaries				\$3,104,126.33
200 <u>Personnel Services – Employee Benefits</u>				
210 Group Insurance – Contracted Provider				1,981.80
220 Social Security Contributions				232,305.80
230 PSERS Retirement Contributions				940,335.02
250 Unemployment Compensation				49.48
260 Workers' Compensation				3,775.88
270 Group Insurance – Self-Insurance				62,572.15
280 Other Post-Employment Benefits (OPEB)				12,700.00
Total Personnel Services – Employee Benefits				\$1,253,720.13
300 <u>Purchased Professional and Technical Services</u>				
330 Other Professional Services				274,796.74
Total Purchased Professional and Technical Services				\$274,796.74
400 <u>Purchased Property Services</u>				
430 Repairs and Maintenance Services				39,694.78
440 Rentals				86,883.97
Total Purchased Property Services				\$126,578.75
500 <u>Other Purchased Services</u>				
510 Student Transportation Services				196,842.26
520 Insurance – General				33,677.00
530 Communications				25.50
580 Travel				27,804.69
Total Other Purchased Services				\$258,349.45
600 <u>Supplies</u>				
610 General Supplies				311,478.79
650 Supplies & Fees – Technology Related				10,301.20
Total Supplies				\$321,779.99
800 <u>Other Objects</u>				
810 Dues and Fees				50,975.05
Total Other Objects				\$50,975.05
Total 3200 Student Activities				\$5,390,326.44

LEA : 123464502 Lower Merion SD

Printed 11/19/2019 10:44:23 AM

General Fund (10)				
3300 Community Services	<u>Elementary</u>	<u>Secondary</u>	<u>Federal</u>	<u>Total</u>
300 <u>Purchased Professional and Technical Services</u>				
330 Other Professional Services				229,398.06
Total Purchased Professional and Technical Services				\$229,398.06
400 <u>Purchased Property Services</u>				
430 Repairs and Maintenance Services				1,165.00
Total Purchased Property Services				\$1,165.00
600 <u>Supplies</u>				
610 General Supplies				6,880.00
630 Food			24.00	24.00
Total Supplies			\$24.00	\$6,904.00
Total 3300 Community Services			\$24.00	\$237,467.06

LEA : 123464502 Lower Merion SD

Printed 11/19/2019 10:44:33 AM

General Fund (10)

5000 Other Expenditures and Financing Uses

Total

800 <u>Other Objects</u>	
830 Interest	7,933,754.20
Total Other Objects	\$7,933,754.20
900 <u>Other Uses of Funds</u>	
910 Redemption of Principal	17,415,000.00
939 Other Fund Transfers	37,065,769.00
Total Other Uses of Funds	\$54,480,769.00
Total 5000 Other Expenditures and Financing Uses	\$62,414,523.20

LEA : 123464502 Lower Merion SD

Printed 11/19/2019 10:44:33 AM

General Fund (10)

5100 Debt Service / Other Expenditures and Financing Uses	<u>Elementary</u>	<u>Secondary</u>	<u>Federal</u>	<u>Total</u>
800 <u>Other Objects</u>				
830 Interest				7,933,754.20
Total Other Objects				\$7,933,754.20
900 <u>Other Uses of Funds</u>				
910 Redemption of Principal				17,415,000.00
Total Other Uses of Funds				\$17,415,000.00
Total 5100 Debt Service / Other Expenditures and Financing Uses				\$25,348,754.20

LEA : 123464502 Lower Merion SD

Printed 11/19/2019 10:44:33 AM

General Fund (10)

5110 Debt Service	<u>Elementary</u>	<u>Secondary</u>	<u>Federal</u>	<u>Total</u>
800 <u>Other Objects</u>				
830 Interest				7,933,754.20
Total Other Objects				\$7,933,754.20
900 <u>Other Uses of Funds</u>				
910 Redemption of Principal				17,415,000.00
Total Other Uses of Funds				\$17,415,000.00
Total 5110 Debt Service				\$25,348,754.20

LEA : 123464502 Lower Merion SD

Printed 11/19/2019 10:44:33 AM

General Fund (10)

5200 Interfund Transfers – Out	<u>Elementary</u>	<u>Secondary</u>	<u>Federal</u>	<u>Total</u>
900 <u>Other Uses of Funds</u>				
939 Other Fund Transfers				37,065,769.00
Total Other Uses of Funds				\$37,065,769.00
Total 5200 Interfund Transfers – Out				\$37,065,769.00

LEA : 123464502 Lower Merion SD

Printed 11/19/2019 10:44:33 AM

General Fund (10)

5230 Capital Projects Fund Transfers	<u>Elementary</u>	<u>Secondary</u>	<u>Federal</u>	<u>Total</u>
900 <u>Other Uses of Funds</u>				
939 Other Fund Transfers				34,900,000.00
Total Other Uses of Funds				\$34,900,000.00
Total 5230 Capital Projects Fund Transfers				\$34,900,000.00

LEA : 123464502 Lower Merion SD

Printed 11/19/2019 10:44:33 AM

General Fund (10)

5240 Debt Service Fund Transfers	<u>Elementary</u>	<u>Secondary</u>	<u>Federal</u>	<u>Total</u>
900 <u>Other Uses of Funds</u>				
939 Other Fund Transfers				2,146,706.00
Total Other Uses of Funds				\$2,146,706.00
Total 5240 Debt Service Fund Transfers				\$2,146,706.00

LEA : 123464502 Lower Merion SD

Printed 11/19/2019 10:44:33 AM

General Fund (10)

5280 Activity Fund Transfers	<u>Elementary</u>	<u>Secondary</u>	<u>Federal</u>	<u>Total</u>
900 <u>Other Uses of Funds</u>				
939 Other Fund Transfers				19,063.00
Total Other Uses of Funds				\$19,063.00
Total 5280 Activity Fund Transfers				\$19,063.00

LEA : 123464502 Lower Merion SD

Printed 11/19/2019 10:44:19 AM

Capital Reserve Fund - § 1431 (32)

2000 Support Services

Total

400	<u>Purchased Property Services</u>	
410	Cleaning Services	603,787.00
430	Repairs and Maintenance Services	1,001,264.65
450	Construction Services	1,912,917.06
Total Purchased Property Services		\$3,517,968.71
700	<u>Property</u>	
752	Capital Equipment – Original and Additional	377,460.00
762	Capitalized Equipment - Replacement	3,293,457.00
766	Capitalized Technology Equipment – Replacement	598,535.32
Total Property		\$4,269,452.32
Total 2000 Support Services		\$7,787,421.03

LEA : 123464502 Lower Merion SD

Printed 11/19/2019 10:44:19 AM

Capital Reserve Fund - § 1431 (32)

2600 Operation and Maintenance of Plant Services

Elementary Secondary Federal Total

400 <u>Purchased Property Services</u>				
410 Cleaning Services				603,787.00
430 Repairs and Maintenance Services				1,001,264.65
450 Construction Services				1,912,917.06
Total Purchased Property Services				\$3,517,968.71
700 <u>Property</u>				
762 Capitalized Equipment - Replacement				47,300.00
Total Property				\$47,300.00
Total 2600 Operation and Maintenance of Plant Services				\$3,565,268.71

LEA : 123464502 Lower Merion SD

Printed 11/19/2019 10:44:19 AM

Capital Reserve Fund - § 1431 (32)

2620 Operation of Buildings Services

Elementary Secondary Federal Total

400 <u>Purchased Property Services</u>				
430 Repairs and Maintenance Services				1,001,264.65
450 Construction Services				1,912,917.06
Total Purchased Property Services				\$2,914,181.71
700 <u>Property</u>				
762 Capitalized Equipment - Replacement				47,300.00
Total Property				\$47,300.00
Total 2620 Operation of Buildings Services				\$2,961,481.71

LEA : 123464502 Lower Merion SD

Printed 11/19/2019 10:44:19 AM

Capital Reserve Fund - § 1431 (32)

2630 Care and Upkeep of Grounds Services

<u>Elementary</u>	<u>Secondary</u>	<u>Federal</u>	<u>Total</u>
-------------------	------------------	----------------	--------------

400 Purchased Property Services

410 Cleaning Services			603,787.00
-----------------------	--	--	------------

Total Purchased Property Services			\$603,787.00
--	--	--	---------------------

Total 2630 Care and Upkeep of Grounds Services			\$603,787.00
---	--	--	---------------------

LEA : 123464502 Lower Merion SD

Printed 11/19/2019 10:44:19 AM

Capital Reserve Fund - § 1431 (32)

2700 Student Transportation Services	<u>Elementary</u>	<u>Secondary</u>	<u>Federal</u>	<u>Total</u>
700 <u>Property</u>				
752 Capital Equipment – Original and Additional				377,460.00
762 Capitalized Equipment - Replacement				3,246,157.00
Total Property				\$3,623,617.00
Total 2700 Student Transportation Services				\$3,623,617.00

LEA : 123464502 Lower Merion SD

Printed 11/19/2019 10:44:19 AM

Capital Reserve Fund - § 1431 (32)

2720 Vehicle Operation Services

Elementary Secondary Federal Total

700 <u>Property</u>				
752 Capital Equipment – Original and Additional				377,460.00
762 Capitalized Equipment - Replacement				3,246,157.00
Total Property				\$3,623,617.00
Total 2720 Vehicle Operation Services				\$3,623,617.00

LEA : 123464502 Lower Merion SD

Printed 11/19/2019 10:44:19 AM

Capital Reserve Fund - § 1431 (32)

2800 Support Services – Central

Elementary Secondary Federal Total

700 <u>Property</u>				
766 Capitalized Technology Equipment – Replacement				598,535.32
Total Property				\$598,535.32
Total 2800 Support Services – Central				\$598,535.32

LEA : 123464502 Lower Merion SD

Printed 11/19/2019 10:44:19 AM

Capital Reserve Fund - § 1431 (32)

2840 Data Processing Services

Elementary Secondary Federal Total

700 <u>Property</u>				
766 Capitalized Technology Equipment – Replacement				598,535.32
Total Property				\$598,535.32
Total 2840 Data Processing Services				\$598,535.32

LEA : 123464502 Lower Merion SD

Printed 11/19/2019 10:44:29 AM

Capital Reserve Fund - § 1431 (32)

4000 Facilities Acquisition, Construction and Improvement Services

Total

300 Purchased Professional and Technical Services

330 Other Professional Services	30,650.96
---------------------------------	-----------

Total Purchased Professional and Technical Services	\$30,650.96
---	-------------

400 Purchased Property Services

450 Construction Services	1,154,226.59
---------------------------	--------------

Total Purchased Property Services	\$1,154,226.59
-----------------------------------	----------------

Total 4000 Facilities Acquisition, Construction and Improvement Services	\$1,184,877.55
--	----------------

LEA : 123464502 Lower Merion SD

Printed 11/19/2019 10:44:29 AM

Capital Reserve Fund - § 1431 (32)

4400 Architecture and Engineering Services / Educational Specifications – Improvements

Elementary

Secondary

Federal

Total

300 Purchased Professional and Technical Services

330 Other Professional Services

30,650.96

Total Purchased Professional and Technical Services

\$30,650.96

Total 4400 Architecture and Engineering Services / Educational Specifications – Improvements

\$30,650.96

LEA : 123464502 Lower Merion SD

Printed 11/19/2019 10:44:29 AM

Capital Reserve Fund - § 1431 (32)

4600 Existing Building Improvement Services

Elementary

Secondary

Federal

Total

400 Purchased Property Services

450 Construction Services

1,154,226.59

Total Purchased Property Services				\$1,154,226.59
Total 4600 Existing Building Improvement Services				\$1,154,226.59

LEA : 123464502 Lower Merion SD

Printed 11/19/2019 10:44:30 AM

Other Capital Projects Fund (39)

4000 Facilities Acquisition, Construction and Improvement Services

Total

300 Purchased Professional and Technical Services

330 Other Professional Services	735,394.05
---------------------------------	------------

Total Purchased Professional and Technical Services	\$735,394.05
--	---------------------

700 Property

710 Land and Improvements	3,456,013.73
---------------------------	--------------

Total Property	\$3,456,013.73
-----------------------	-----------------------

Total 4000 Facilities Acquisition, Construction and Improvement Services	\$4,191,407.78
---	-----------------------

LEA : 123464502 Lower Merion SD

Printed 11/19/2019 10:44:30 AM

Other Capital Projects Fund (39)

4100 Site Acquisition Services – Original and Additional

Elementary

Secondary

Federal

Total

700 Property

710 Land and Improvements

3,456,013.73

Total Property				\$3,456,013.73
Total 4100 Site Acquisition Services – Original and Additional				\$3,456,013.73

LEA : 123464502 Lower Merion SD

Printed 11/19/2019 10:44:30 AM

Other Capital Projects Fund (39)

4400 Architecture and Engineering Services / Educational Specifications – Improvements	<u>Elementary</u>	<u>Secondary</u>	<u>Federal</u>	<u>Total</u>
300 <u>Purchased Professional and Technical Services</u>				
330 Other Professional Services				735,394.05
Total Purchased Professional and Technical Services				\$735,394.05
Total 4400 Architecture and Engineering Services / Educational Specifications – Improvements				\$735,394.05

LEA : 123464502 Lower Merion SD

Printed 11/19/2019 10:44:48 AM

	<u>General Fund(10)</u>	<u>Public Purpose Trust(27)</u>	<u>Other Compt Approved</u> <u>(28)</u>	<u>Athletic / Activity(29)</u>	<u>Capital Reserve (690.</u> <u>1850)(31)</u>
1000 <u>Instruction</u>					
1100 Regular Programs - Elementary / Secondary	100,139,181.77				
1200 Special Programs - Elementary / Secondary	42,176,030.34				
1300 Vocational Education	368,199.57				
1400 Other Instructional Programs - Elementary / Secondary	1,145,888.58				
1500 Nonpublic School Programs	22,013.50				
1700 Higher Education Programs for Secondary Students	26,037.00				
Total Instruction	\$143,877,350.76				
2000 <u>Support Services</u>					
2100 Support Services - Students	9,822,850.68				
2200 Support Services - Instructional Staff	6,319,290.05				
2300 Support Services - Administration	14,122,306.31				
2400 Support Services - Pupil Health	3,670,182.06				
2500 Support Services - Business	1,776,235.55				
2600 Operation and Maintenance of Plant Services	19,207,153.98				
2700 Student Transportation Services	13,757,902.73				
2800 Support Services - Central	6,572,768.07				
2900 Other Support Services	679,195.74				
Total Support Services	\$75,927,885.17				
3000 <u>Operation of Non-Instructional Services</u>					
3200 Student Activities	5,390,326.44				
3300 Community Services	237,467.06				
Total Operation of Non-Instructional Services	\$5,627,793.50				
4000 <u>Facilities Acquisition, Construction and Improvement Services</u>					
4100 Site Acquisition Services - Original and Additional					
4400 Architecture and Engineering Services / Educational Specifications - Improvements					
4600 Existing Building Improvement Services					
Total Facilities Acquisition, Construction and Improvement					
5000 <u>Other Expenditures and Financing Uses</u>					
5100 Debt Service / Other Expenditures and Financing Uses	25,348,754.20				
5200 Interfund Transfers - Out	37,065,769.00				
Total Other Expenditures and Financing Uses	\$62,414,523.20				
TOTAL ACTUAL EXPENDITURES & OTHER FINANCING USES	\$287,847,552.63				

LEA : 123464502 Lower Merion SD

Printed 11/19/2019 10:44:48 AM

	<u>Capital Reserve (1431)(32)</u>	<u>Other Capital Projects Fund(39)</u>	<u>Debt Service(40)</u>	<u>Permanent(90)</u>	<u>Total</u>
1000 <u>Instruction</u>					
1100 Regular Programs - Elementary / Secondary					100,139,181.77
1200 Special Programs - Elementary / Secondary					42,176,030.34
1300 Vocational Education					368,199.57
1400 Other Instructional Programs - Elementary / Secondary					1,145,888.58
1500 Nonpublic School Programs					22,013.50
1700 Higher Education Programs for Secondary Students					26,037.00
Total Instruction					\$143,877,350.76
2000 <u>Support Services</u>					
2100 Support Services - Students					9,822,850.68
2200 Support Services - Instructional Staff					6,319,290.05
2300 Support Services - Administration					14,122,306.31
2400 Support Services - Pupil Health					3,670,182.06
2500 Support Services - Business					1,776,235.55
2600 Operation and Maintenance of Plant Services	3,565,268.71				22,772,422.69
2700 Student Transportation Services	3,623,617.00				17,381,519.73
2800 Support Services - Central	598,535.32				7,171,303.39
2900 Other Support Services					679,195.74
Total Support Services	\$7,787,421.03				\$83,715,306.20
3000 <u>Operation of Non-Instructional Services</u>					
3200 Student Activities					5,390,326.44
3300 Community Services					237,467.06
Total Operation of Non-Instructional Services					\$5,627,793.50
4000 <u>Facilities Acquisition, Construction and Improvement Services</u>					
4100 Site Acquisition Services - Original and Additional		3,456,013.73			3,456,013.73
4400 Architecture and Engineering Services / Educational Specifications - Improvements	30,650.96	735,394.05			766,045.01
4600 Existing Building Improvement Services	1,154,226.59				1,154,226.59
Total Facilities Acquisition, Construction and Improvement	\$1,184,877.55	\$4,191,407.78			\$5,376,285.33
5000 <u>Other Expenditures and Financing Uses</u>					
5100 Debt Service / Other Expenditures and Financing Uses					25,348,754.20
5200 Interfund Transfers - Out					37,065,769.00
Total Other Expenditures and Financing Uses					\$62,414,523.20
TOTAL ACTUAL EXPENDITURES & OTHER FINANCING USES	\$8,972,298.58	\$4,191,407.78			\$301,011,258.99

LEA : 123464502 Lower Merion SD

Printed 11/19/2019 10:44:56 AM

PSERS Salary Data (Salary Data should relate to the General Fund only)

Amount	Description	Amount
	Total Salary Base for salaries subject to PSERS withholding	123,712,188.15
	Total Federally Funded salaries subject to PSERS withholding	915,915.58

Title I Expenditure Data

Amount	Description	Amount
	Expenditures Funded with Current Title I Funds	315,246.10
	Expenditures Funded with Carry over Title I Funds	
Total	Title I Expenditure Data	\$315,246.10

Benefits for Staff Relative to Collective Bargaining Agreements

	OBJECT	COVERED	NOT COVERED	TOTAL
10 General Fund				
	211 Medical Insurance			
	212 Dental Insurance			
	215 Eye Care Insurance			
	216 Prescription Insurance			
	271 Self-Insurance Medical Benefits	10,903,171.48	525,841.41	11,429,012.89
	272 Self-Insurance Dental Benefits	1,061,453.38	51,192.09	1,112,645.47
	275 Self-Insurance Eye Care Benefits	107,880.35	5,202.89	113,083.24
	276 Self-Insurance Prescription Benefits	3,950,784.34	190,539.61	4,141,323.95
	FUND TOTAL	\$16,023,289.55	\$772,776.00	\$16,796,065.55
50 Enterprise Fund				
	211 Medical Insurance			
	212 Dental Insurance			
	215 Eye Care Insurance			
	216 Prescription Insurance			
	271 Self-Insurance Medical Benefits	248,285.73	11,548.17	259,833.90
	272 Self-Insurance Dental Benefits	20,663.56	961.10	21,624.66
	275 Self-Insurance Eye Care Benefits	1,699.20	226.56	1,925.76
	276 Self-Insurance Prescription Benefits	76,163.49	3,542.49	79,705.98
	FUND TOTAL	\$346,811.98	\$16,278.32	\$363,090.30
60 Internal Service Fund	No Self Insurance data to report			
	211 Medical Insurance			
	212 Dental Insurance			
	215 Eye Care Insurance			
	216 Prescription Insurance			
	271 Self-Insurance Medical Benefits			
	272 Self-Insurance Dental Benefits			
	275 Self-Insurance Eye Care Benefits			
	276 Self-Insurance Prescription Benefits			
	FUND TOTAL			
Total of All Funds		\$16,370,101.53	\$789,054.32	\$17,159,155.85

LEA : 123464502 Lower Merion SD

Printed 11/19/2019 10:45:06 AM

Function	Special Education (Prior Year)	Nonspecial Education (Prior Year)	Total (Prior Year)	Special Education (Current Year)	Nonspecial Education (Current Year)	Total (Current Year)
2120 Guidance Services	682,571.84	4,123,405.31	4,805,977.15	762,413.65	4,168,506.59	4,930,920.24
2140 Psychological Services	1,356,674.13	904,449.42	2,261,123.55	862,563.48	1,293,845.23	2,156,408.71
2150 Speech Pathology and Audiology Services						
2160 Social Work Services						
2260 Instruction and Curriculum Development Services	1,241,063.27	1,819,333.71	3,060,396.98	1,182,890.57	1,802,876.35	2,985,766.92
2350 Legal and Accounting Services	336,302.72	1,028,130.57	1,364,433.29	261,554.80	1,188,804.04	1,450,358.84
2420 Medical Services		30,800.04	30,800.04		42,421.92	42,421.92
2440 Nursing Services	383,471.89	2,316,547.43	2,700,019.32	429,213.39	2,346,729.79	2,775,943.18
2700 Student Transportation Services	4,053,284.01	9,457,662.69	13,510,946.70	4,127,370.82	9,630,531.91	13,757,902.73
Total	\$8,053,367.86	\$19,680,329.17	\$27,733,697.03	\$7,626,006.71	\$20,473,715.83	\$28,099,722.54

LEA : 123464502 Lower Merion SD

Printed 11/19/2019 10:45:10 AM

(PRINCIPAL AMOUNTS ONLY)								
<u>GOVERNMENTAL FUNDS/ ACTIVITIES</u>	Short-Term Borrowing	General Obligation Bonds/Notes	Authority Building Obligations	Other Long-Term Debt	Other Post- Employment Benefits (OPEB)	Compensated Absences	Net Pension Liability	Total
1. Debt at Beginning of Fiscal Year		228,740,000.00			11,835,855.00	757,988.00	436,755,787.00	678,089,630.00
2. Additional Debt Incurred During Year						12,855.00	1,108,473.00	1,121,328.00
3. Retirements and Repayments		17,415,000.00			871,636.00			18,286,636.00
4. Debt at End of Fiscal Year		211,325,000.00			10,964,219.00	770,843.00	437,864,260.00	660,924,322.00
5. Accreted Interest at End Of Fiscal Year								
6. Total Debt and Accreted Interest		211,325,000.00			10,964,219.00	770,843.00	437,864,260.00	660,924,322.00
7. Current Portion P&I - Due within 1 year		25,213,652.00						25,213,652.00
8. Interest Paid during current fiscal year		7,933,758.00						7,933,758.00

(PRINCIPAL AMOUNTS ONLY)								
<u>PROPRIETARY FUNDS</u>	Short-Term Borrowing	General Obligation Bonds/Notes	Authority Building Obligations	Other Long-Term Debt	Other Post- Employment Benefits (OPEB)	Compensated Absences	Net Pension Liability	Total
1. Debt at Beginning of Fiscal Year							4,184,213.00	4,184,213.00
2. Additional Debt Incurred During Year								
3. Retirements and Repayments							305,473.00	305,473.00
4. Debt at End of Fiscal Year							3,878,740.00	3,878,740.00
5. Accreted Interest at End Of Fiscal Year								
6. Total Debt and Accreted Interest							3,878,740.00	3,878,740.00
7. Current Portion P&I - Due within 1 year								
8. Interest Paid during current fiscal year								

LEA : 123464502 Lower Merion SD

Printed 11/19/2019 10:45:10 AM

Total Principal and Interest Payments Made by Your School - All Funds

Function	Fund		Principal (910)	Principal (920)	Interest (830)	Total (Principal +Interest)	Misc Other Uses (990)
5110	10	General Fund	17,415,000.00		7,933,754.20	25,348,754.20	
5110	20	Special Revenue Funds					
5110	30	Capital Projects Funds					
5110	40	Debt Service Fund					
5110	90	Permanent Fund					
5120	10	General Fund					
5120	20	Special Revenue Funds					
5120	30	Capital Projects Funds					
5120	40	Debt Service Fund					
Total Debt Payments - Governmental Funds			\$17,415,000.00		\$7,933,754.20	\$25,348,754.20	

Function	Fund		Principal (910)	Principal (920)	Interest (830)	Total (Principal +Interest)
5110	50	Enterprise Fund				
5110	60	Internal Service Fund				
5120	50	Enterprise Fund				
5120	60	Internal Service Fund				
Total Debt Payments - Proprietary Funds						

LEA : 123464502 Lower Merion SD

Printed 11/19/2019 10:45:10 AM

Debt Details
Governmental Funds/ Activities

Debt Category	Debt Issue Date (MM/YYYY)	Principal Amounts Only				Current Portion Due Within One Year (Principal and Interest)	Interest Paid During Fiscal Year
		Debt at Beginning of Fiscal Year	Additions	Reductions / Repayments	Debt at End of Fiscal Year		
General Obligation Bonds/Notes – CIB	03/2016	55,100,000.00		3,670,000.00	51,430,000.00	6,515,650.00	2,166,425.00
General Obligation Bonds/Notes – CIB	04/2015	8,920,000.00		410,000.00	8,510,000.00	670,935.00	263,385.00
General Obligation Bonds/Notes – CIB	05/2015	31,870,000.00		2,725,000.00	29,145,000.00	3,805,050.00	1,055,425.00
General Obligation Bonds/Notes – CIB	04/2014	9,855,000.00		110,000.00	9,745,000.00	312,608.00	219,658.00
General Obligation Bonds/Notes – CIB	04/2013	9,785,000.00		5,000.00	9,780,000.00	200,418.00	195,481.00
General Obligation Bonds/Notes – CIB	04/2012	38,405,000.00		2,805,000.00	35,600,000.00	4,217,437.00	1,411,916.00
General Obligation Bonds/Notes – CIB	02/2009	60,905,000.00		5,590,000.00	55,315,000.00	7,052,944.00	2,439,230.00
General Obligation Bonds/Notes – CIB	07/2006	13,900,000.00		2,100,000.00	11,800,000.00	2,438,610.00	182,238.00
Compensated Absences		757,988.00	12,855.00		770,843.00		
Other Post-Employment Benefits (OPEB)		11,835,855.00		871,636.00	10,964,219.00		
Net Pension Liability		436,755,787.00	1,108,473.00		437,864,260.00		
Totals for Debt Entered:		\$678,089,630.00	\$1,121,328.00	\$18,286,636.00	\$660,924,322.00	\$25,213,652.00	\$7,933,758.00

Bond Details
Proprietary Funds

Debt Category	Debt Issue Date (MM/YYYY)	Principal Amounts Only				Current Portion Due Within One Year (Principal and Interest)	Interest Paid During Fiscal Year
		Debt at Beginning of Fiscal Year	Additions	Reductions / Repayments	Debt at End of Fiscal Year		
Net Pension Liability		4,184,213.00		305,473.00	3,878,740.00		
Totals for Debt Entered:		\$4,184,213.00		\$305,473.00	\$3,878,740.00		

LEA : 123464502 Lower Merion SD

Printed 11/19/2019 10:45:13 AM

General Fund (10)

Section 1: Tuition/Purchased Services as Reported within Expenditure Detail	Amount
Tuition Reported in General Fund Expenditures 1000-560	4,963,562.40
Purchased Services in General Fund Expenditures 1000-594 and 1000-597	7,881.11
Section 1 Total	\$4,971,443.51

Section 2: Tuition Paid to Institution Types During Fiscal Year	Tuition Paid For Nonspecial Education	Tuition Paid For Special Education	Total
1 1306 Institutions			
2 Institutionalized Children's Programs		7,881.11	7,881.11
3 Juveniles Incarcerated in Adult Facilities			
4 Residential Treatment Facilities			
5 Other Local Education Agencies	29,965.16	18,846.98	48,812.14
6 Brick and Mortar Charter Schools	81,431.44		81,431.44
7 Cyber Charter Schools	502,512.13	509,916.39	1,012,428.52
8 Career and Technology Centers	368,199.57		368,199.57
9 Approved Private Schools	10,152.07	1,481,583.90	1,491,735.97
10 PA Chartered Schools for the Deaf and Blind			
11 Private Residential Rehabilitative Institutions	7,434.09	2.67	7,436.76
12 Juvenile Detention Centers			
13 Special Program Jointures			
14 Other Tuition Not Included Elsewhere In This Section	119,861.82	1,833,656.18	1,953,518.00
Section 2 Total	\$1,119,556.28	\$3,851,887.23	\$4,971,443.51

LEA : 123464502 Lower Merion SD

Printed 11/19/2019 10:45:16 AM

Food Service / Cafeteria Operations Fund (51)

3000 Operation of Non-Instructional Services		Total
100 <u>Personnel Services – Salaries</u>		
100 Personnel Services – Salaries		1,163,626.91
Total Personnel Services – Salaries		\$1,163,626.91
200 <u>Personnel Services – Employee Benefits</u>		
210 Group Insurance – Contracted Provider		2,692.45
220 Social Security Contributions		87,543.13
230 PSERS Retirement Contributions		273,623.50
260 Workers' Compensation		10,155.12
270 Group Insurance – Self-Insurance		363,090.30
Total Personnel Services – Employee Benefits		\$737,104.50
400 <u>Purchased Property Services</u>		
430 Repairs and Maintenance Services		38,790.07
440 Rentals		924.32
Total Purchased Property Services		\$39,714.39
500 <u>Other Purchased Services</u>		
580 Travel		5,631.85
Total Other Purchased Services		\$5,631.85
600 <u>Supplies</u>		
610 General Supplies		92,207.56
630 Food		1,381,075.89
650 Supplies & Fees – Technology Related		7,212.89
Total Supplies		\$1,480,496.34
700 <u>Property</u>		
740 Depreciation		8,535.46
Total Property		\$8,535.46
800 <u>Other Objects</u>		
810 Dues and Fees		2,162.75
890 Miscellaneous Expenditures		41.10
Total Other Objects		\$2,203.85
Total 3000 Operation of Non-Instructional Services		\$3,437,313.30

LEA : 123464502 Lower Merion SD

Printed 11/19/2019 10:45:16 AM

Food Service / Cafeteria Operations Fund (51)

3100 Food Services	Elementary	Secondary	Federal	Total
100 <u>Personnel Services – Salaries</u>				
100 Personnel Services – Salaries				1,163,626.91
Total Personnel Services – Salaries				\$1,163,626.91
200 <u>Personnel Services – Employee Benefits</u>				
210 Group Insurance – Contracted Provider				2,692.45
220 Social Security Contributions				87,543.13
230 PSERS Retirement Contributions				273,623.50
260 Workers' Compensation				10,155.12
270 Group Insurance – Self-Insurance				363,090.30
Total Personnel Services – Employee Benefits				\$737,104.50
400 <u>Purchased Property Services</u>				
430 Repairs and Maintenance Services				38,790.07
440 Rentals				924.32
Total Purchased Property Services				\$39,714.39
500 <u>Other Purchased Services</u>				
580 Travel				5,631.85
Total Other Purchased Services				\$5,631.85
600 <u>Supplies</u>				
610 General Supplies				92,207.56
630 Food			168,063.48	1,381,075.89
650 Supplies & Fees – Technology Related				7,212.89
Total Supplies			\$168,063.48	\$1,480,496.34
700 <u>Property</u>				
740 Depreciation				8,535.46
Total Property				\$8,535.46
800 <u>Other Objects</u>				
810 Dues and Fees				2,162.75
890 Miscellaneous Expenditures				41.10
Total Other Objects				\$2,203.85
Total 3100 Food Services			\$168,063.48	\$3,437,313.30

	<u>Food Service(51)</u>	<u>Child Care Operations(52)</u>	<u>Other Enterprise(58)</u>	<u>Internal Service(60)</u>	<u>Total</u>
3000 <u>Operation of Non-Instructional Services</u>					
3100 Food Services	3,437,313.30				3,437,313.30
Total Operation of Non-Instructional Services	\$3,437,313.30				\$3,437,313.30
TOTAL ACTUAL EXPENDITURES & OTHER FINANCING USES	\$3,437,313.30				\$3,437,313.30

LEA : 123464502 Lower Merion SD

Printed 11/19/2019 10:45:28 AM

Fund	School	School Number	Local Personnel	Local Nonpersonnel	State Personnel	State Nonpersonnel	Federal Personnel	Federal Nonpersonnel	Total	Explanation
10										
	Bala-Cynwyd MS	3293	20,514,423.10	2,435,326.18	3,441,461.85	408,545.84	174,210.24	20,681.00	26,994,648.21	
	Belmont Hills El Sch	7597	10,365,554.13	1,044,082.70	1,738,906.28	175,153.39	88,025.18	8,866.44	13,420,588.12	
	Cynwyd Sch	3286	9,520,586.20	1,169,265.92	1,597,156.01	196,153.90	80,849.64	9,929.51	12,573,941.18	
	Gladwyne Sch	3291	12,316,492.20	1,538,594.01	2,066,192.06	258,111.70	104,592.71	13,065.87	16,297,048.55	
	Harriton SHS	3296	25,181,154.29	3,251,476.71	4,224,344.08	545,461.75	213,840.52	27,611.82	33,443,889.17	
	Lower Merion HS	3295	30,114,417.72	3,787,060.83	5,051,939.27	635,310.35	255,734.22	32,160.05	39,876,622.44	
	Merion El Sch	3287	10,033,433.63	1,229,474.05	1,683,190.35	206,254.30	85,204.78	10,440.80	13,247,997.91	
	Penn Valley Sch	3288	11,602,539.38	1,371,173.44	1,946,420.64	230,025.53	98,529.76	11,644.12	15,260,332.87	
	Penn Wynne Sch	3289	12,335,953.72	1,650,681.60	2,069,456.88	276,915.31	104,757.98	14,017.73	16,451,783.22	
	Welsh Valley MS	3294	20,697,363.53	2,386,820.11	3,472,151.60	400,408.55	175,763.79	20,269.08	27,152,776.66	
Total			162,681,917.90	19,863,955.55	27,291,219.02	3,332,340.62	1,381,508.82	168,686.42	214,719,628.33	