



SAINT MARY'S
forever

ONE SCHOOL. ONE VISION. ONE FUTURE.



A CAMPAIGN FOR SAINT MARY'S
VISION PHASE



“We’ve proven that a tailored, all-girls curriculum, culture and community ensures that each girl grows in confidence, preparing her for an unlimited future.”

– GLORIA TAFT BECKER '92HS
Chairwoman, Board of Trustees

SAINT MARY'S FOREVER Campaign Overview

For over 177 years, Saint Mary's has consistently **helped our girls grow in confidence**. It's our hallmark. As 9th graders advance to seniors, they transform from girls to poised young women. Our Girls Curriculum is designed to instill this self-confidence and prepare students to succeed in high school and life.

Through the intentional integration of academics and co-curricular activities, **Saint Mary's prepares our students for the leadership the world needs from confident, forward-thinking women**. We're counting on **those who share our firm belief in girls-only education**—those who understand the value of women who can lead and navigate the tremendous opportunities of our time—to **join us in ensuring Saint Mary's Forever**.

OUR THREE PRIORITIES:





Saint Mary's is defined not only by the school's history, but by our ability to **continue to provide the best educational opportunities possible** in a world that is ever-changing.

Financial Sustainability

Saint Mary's is committed to directing our resources to an innovative girls curriculum and campus life that brings out the very best in our students.

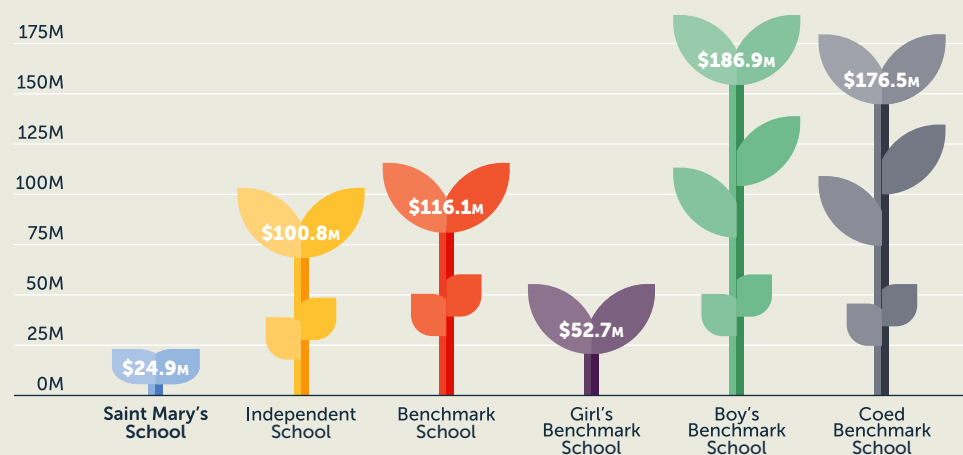
Currently, dollars used to service debt are dollars diverted from our girls. Our goal is to eliminate nearly \$10 million in current debt, which will allow us to redirect \$1.8 million annually to the programs and opportunities that will ensure Saint Mary's students reach their highest potential.

REDIRECTING \$1.8M ANNUALLY

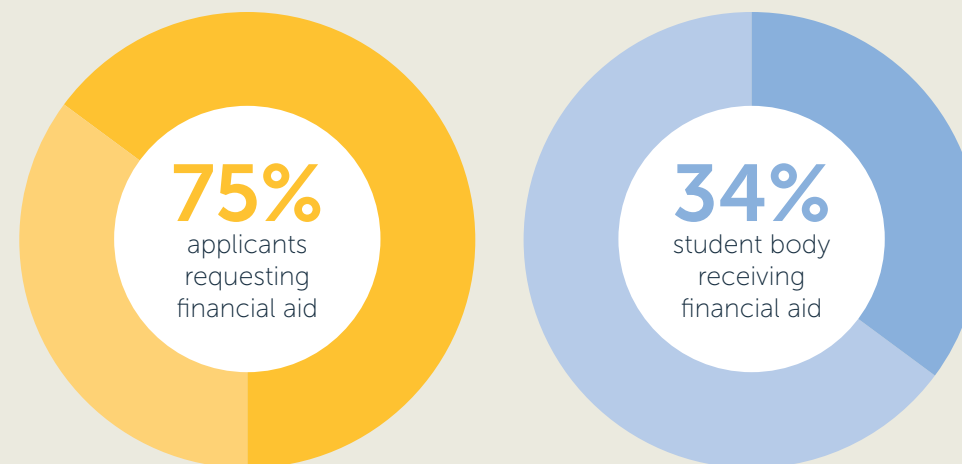




ENDOWMENT SIZE



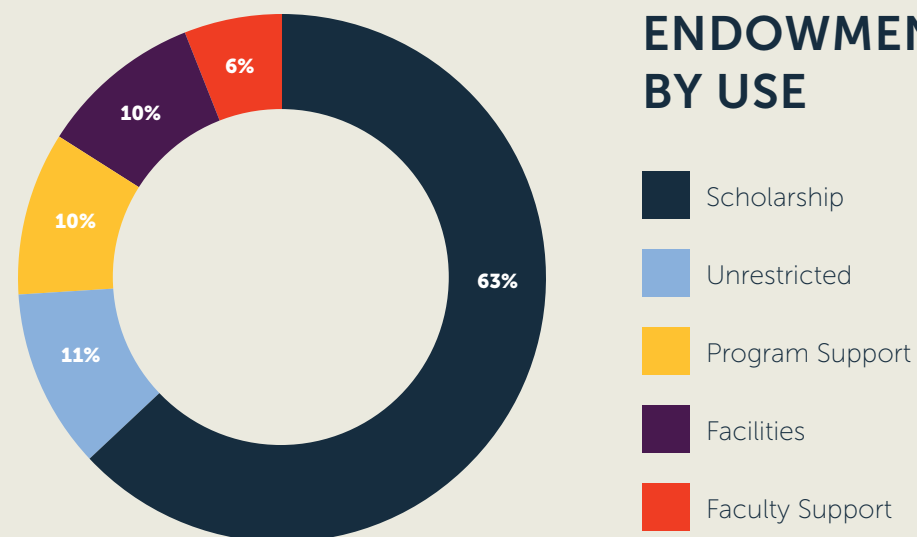
CURRENT SCHOLARSHIP ALLOCATION



Growing Our Endowment

The strength of a school is evident in the security of a growing endowment. One of the ways our endowment directly impacts our students is through our scholarship program. **Of the \$2 million in scholarships granted annually, our endowment currently supports \$500,000**, leaving the balance to be absorbed through the operating budget. To fully fund our current scholarship level, we must more than double our endowment. Our goal is not simply to maintain, but to grow our scholarship program and overall endowment.

ENDOWMENT BY USE



A SNAPSHOT OF FINANCIAL AID

\$2,096,300

total number of scholarships granted



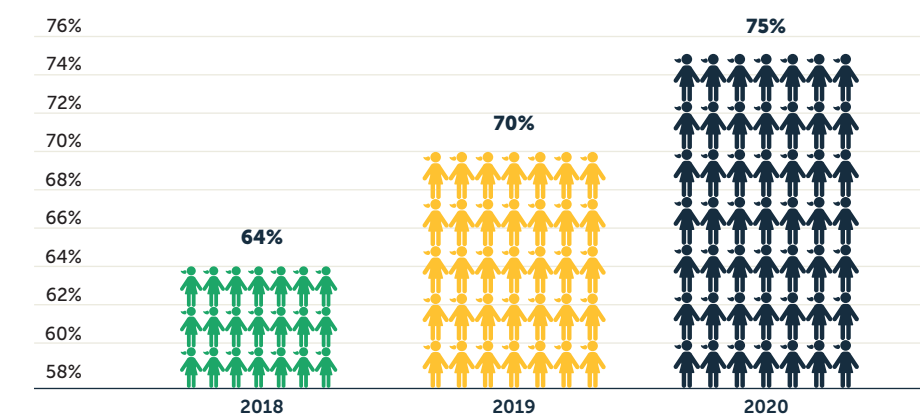
\$527,151

scholarships supported from endowment

\$1,569,149

additional funds needed

PERCENTAGE OF APPLICANTS WHO APPLIED FOR FINANCIAL AID



“For 80 percent of families nationally, tuition grew significantly faster than income.”—2018-19 NAIS TRENDBOOK

NUMBER OF ENDOWMENTS



According to the National Association of Independent Schools (NAIS), increases in student aid over the past seven years have simply matched tuition increases. In other words, **the number of students who are receiving aid has remained flat while the amount of aid has grown to match tuition each year.** In order to keep pace with demand, Saint Mary's must grow both its scholarship awards and the number of students who receive them.



New Academic Center

Girls learn differently than boys. They're creative, flexible and focused, and they need spaces that encourage and support their learning.

The current physical separation of academic departments—especially those for science and math—makes cross-curricular endeavors challenging. **The new Academic Center will be an incubator for confidence** as girls learn to think divergently and solve problems by connecting seemingly disconnected ideas. Students will also engage in iterative thinking as they move through the creative process, helping to build a growth mindset.

The new Academic Center will:

- ▶ Build collaborative space to foster interaction and team-based research
- ▶ Provide balance between open and closed spaces
- ▶ Have flexibility to accommodate change
- ▶ Deliver advanced technology infrastructure
- ▶ Be environmentally sustainable
- ▶ Incorporate meeting and collaborative spaces to facilitate partnerships between government, private-sector industry and Saint Mary's





New Performing Arts Center

Home of the historical 1907 Eliza Battle Pittman Auditorium and central to our academic quad is our new Performing Arts Center which will catapult the arts and create new opportunities for dynamic, integrated learning.

Hosting our all-school assemblies, **the new Performing Arts Center will continue the Pittman tradition as a place where leaders are born and given opportunities to soar.** Increasing the size of this anchor on campus not only offers a new home to all performing arts, it also creates flexible, spacious and innovative spaces with state of the art technology including acoustics, lighting, sound, recording and customized flooring that will help our students perfect their crafts and gain confidence in every rehearsal, performance and gathering.

The new Performing Arts Center will:

- ▶ Enhance reasoning and creative thinking, as well as motivation, concentration and teamwork
- ▶ Provide exceptional experiences for our girls, community and alumnae
- ▶ Expand backstage and rehearsal space, dedicated dance area, outdoor amphitheater and black box theater
- ▶ Attract more visitors and build community both internally and externally
- ▶ Foster and maintain the strong heritage and legacy of the Eliza Battle Pittman Auditorium where assemblies are a staple and leaders are born, connecting people of all ages through the traditions of Saint Mary's

“Taking leaps of faith from the Pittman stage made me realize how my whole Saint Mary's experience has cultivated my confidence and leadership abilities. As student body president I feel an even greater responsibility to help my peers find their confidence in any realm.”

– MARGARET IVY JOHNSTON '20, SGA PRESIDENT



Invest in Our Future

As we launch the Saint Mary's Forever Campaign, we're not limited by a goal, only by our ability to tap the school's unrealized potential. The combined investments of our early campaign supporters will directly shape the speed at which the transformation can unfold.

As you consider your own investment, dream beyond your initial thought. Invest boldly in our girls' education.



THREE WAYS TO GIVE. ONE IMPACT.



Campaign
Commitment

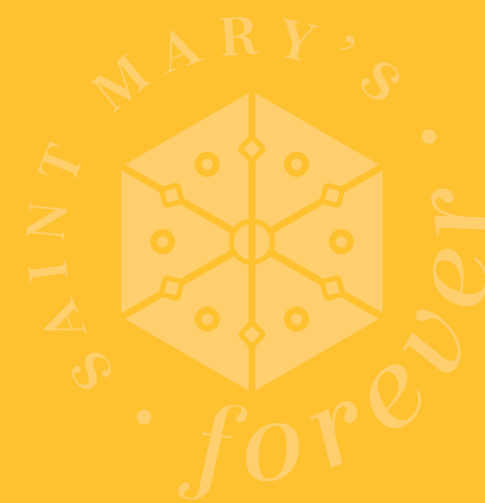


Annual
Fund



Planned
Giving

Join us in developing the confident, forward-thinking young women of our future.



“As Saint Mary’s girls, we’ve experienced the transforming power of our school. As alumnae, we have a responsibility to secure the future of Saint Mary’s.”

— RUTH E. PERRY HOLDING '81C
Co-chair, Saint Mary's Forever Campaign



SAINT MARY'S
forever

900 Hillsborough Street, Raleigh, NC 27603 | (919) 424-4000

www.sms.edu/forever