

Creating Systemic Pathways to Early School Success

Universal Access Pilot

Alum Rock Union
School District
Board Meeting

November 14, 2019



Santa Clara County
Office of Education

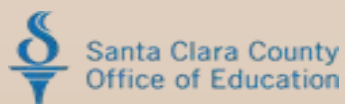
FIRST 5
Santa Clara County

Alum Rock Union
School District

SOMOS Mayfair

Healthier Kids
Foundation

Applied Survey Research



Introduction

- Backdrop for the Universal Access Pilot Initiative
 - Community profile
 - Our kindergarten readiness profile: Needs and Opportunities
- Overview of the Initiative
 - The Universal Access Pilot is a multi-pronged initiative aimed at preparing children and their families for a strong academic experience in our public schools. It interweaves the efforts of the School District, County government, and the nonprofit sectors.



Backdrop for the Universal Access Pilot Initiative

Profile of Alum Rock



Insight into the Alum Rock community

- Traditionally a low-income, immigrant neighborhood
- 82% Latino; 8.3% Vietnamese
- 36.2% foreign born
- \$72,079 median household income vs \$101,173 countywide
- 85.3% free and reduced lunch



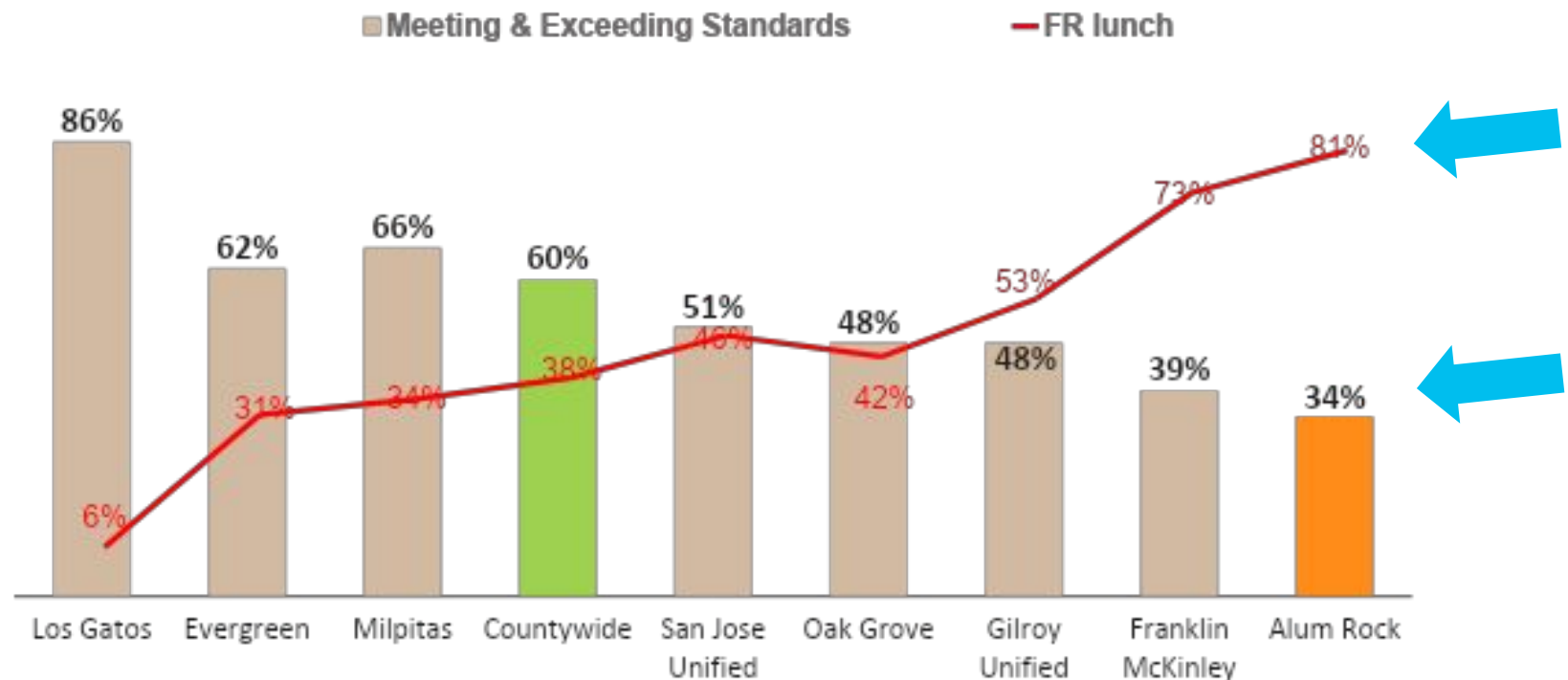
What makes Alum Rock strong?

- A population rich in diversity with strong connections to language, culture, heritage and traditions
- Hard working, resilient and determined families who want healthy and successful futures for their children
- Educators, community leaders and parents who come together to advance shared goals
- Robust system of public and nonprofit partners that provide services, programs and access to opportunities for students and families



Third grade reading and poverty are correlated...in not the right way

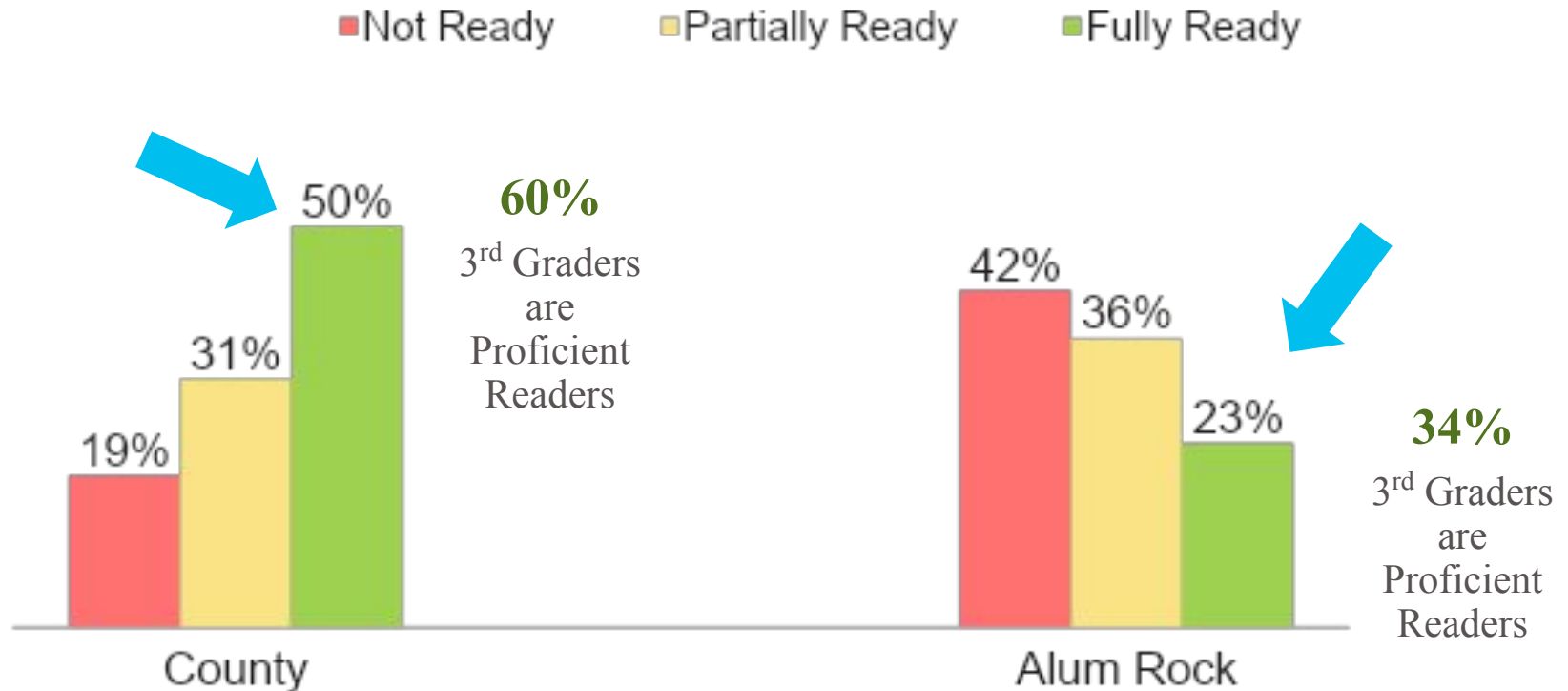
- In 2018/19, Alum Rock Union had the second to **lowest** rate of third grade reading proficiency in the county, and the **highest** rate of child poverty.



Source: California Department of Education, Dataquest; % of students meeting or exceeding 3rd grade ELA standards. Free and Reduced lunch data is from 2017/18.

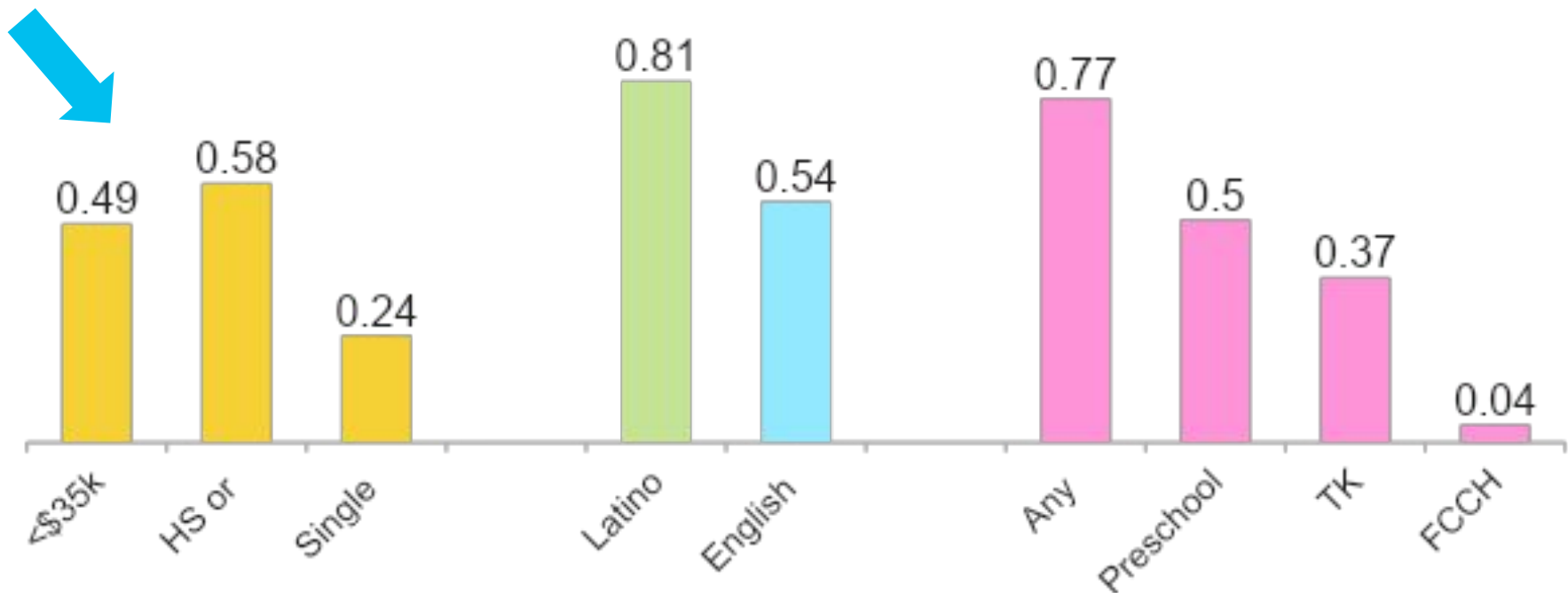
Third grade reading is also predicted by kindergarten readiness

- Countywide, kindergartners are twice as likely to be ready for kindergarten as they are in Alum Rock. Readiness is closely linked to 3rd grade reading scores.

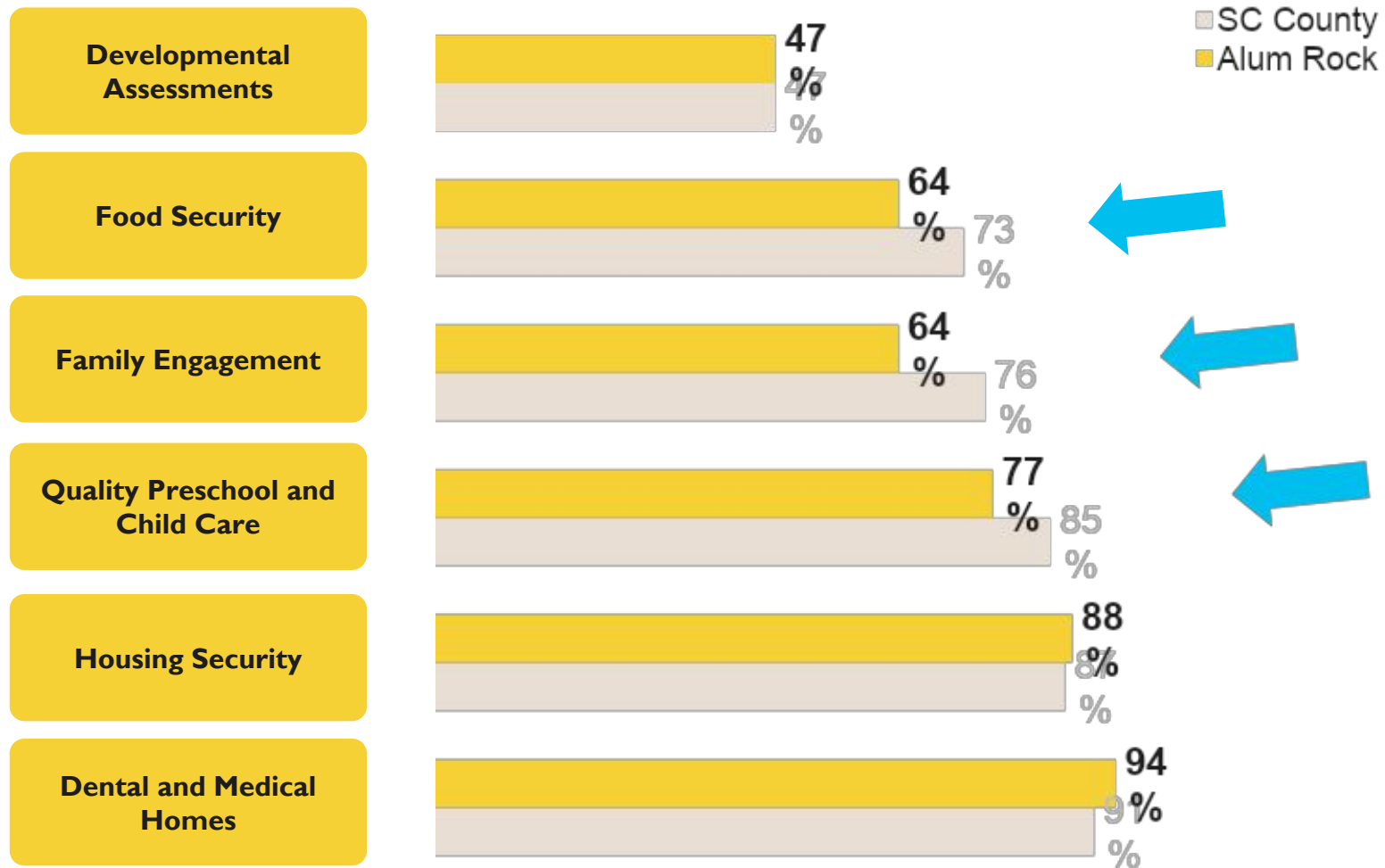


Profile of Kindergartners in Alum Rock

- In 2018, children's families faced socio-economic barriers but most had access to early learning opportunities

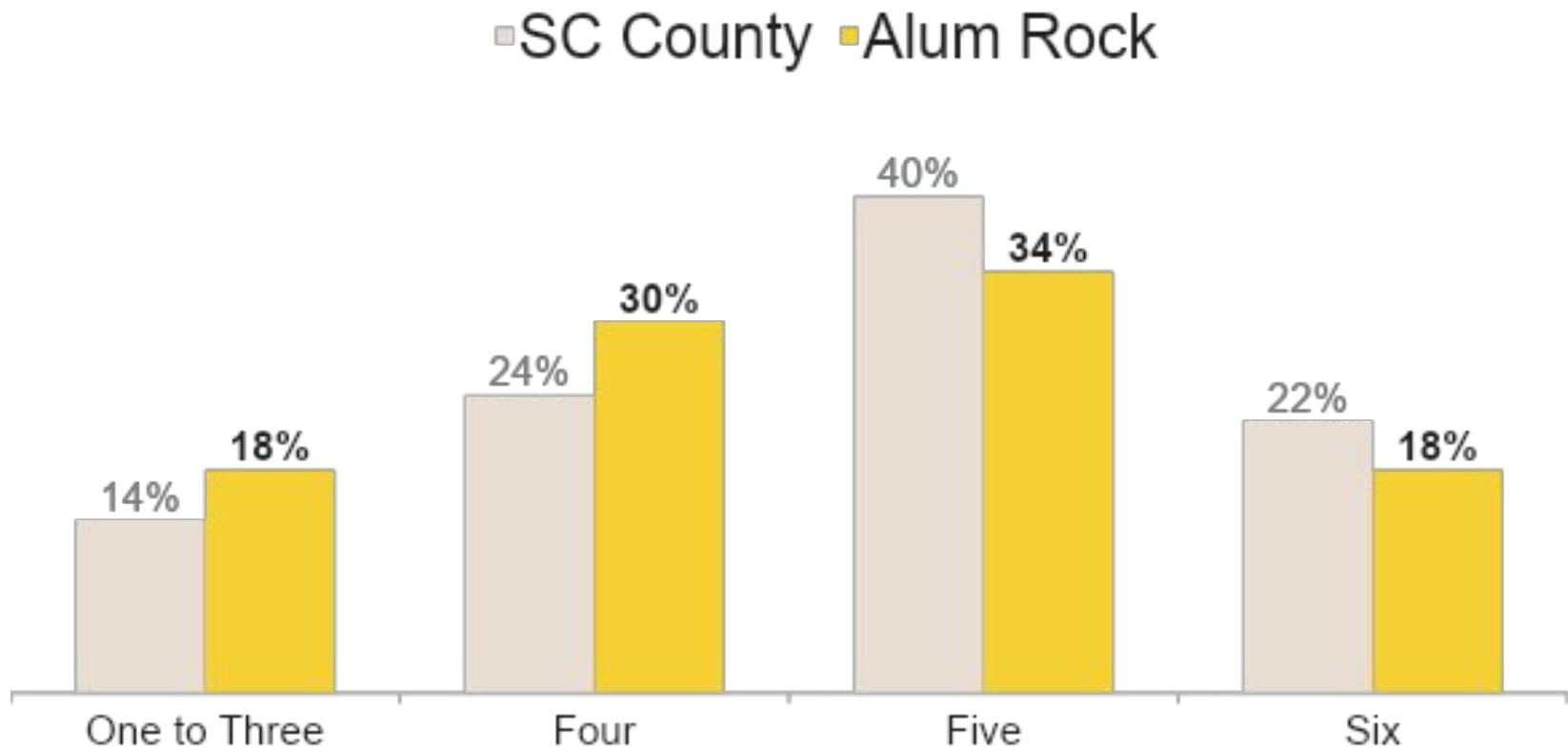


Alum Rock families had fewer social determinants of health than families countywide



Source: Santa Clara County school readiness assessment, 2018. N=825

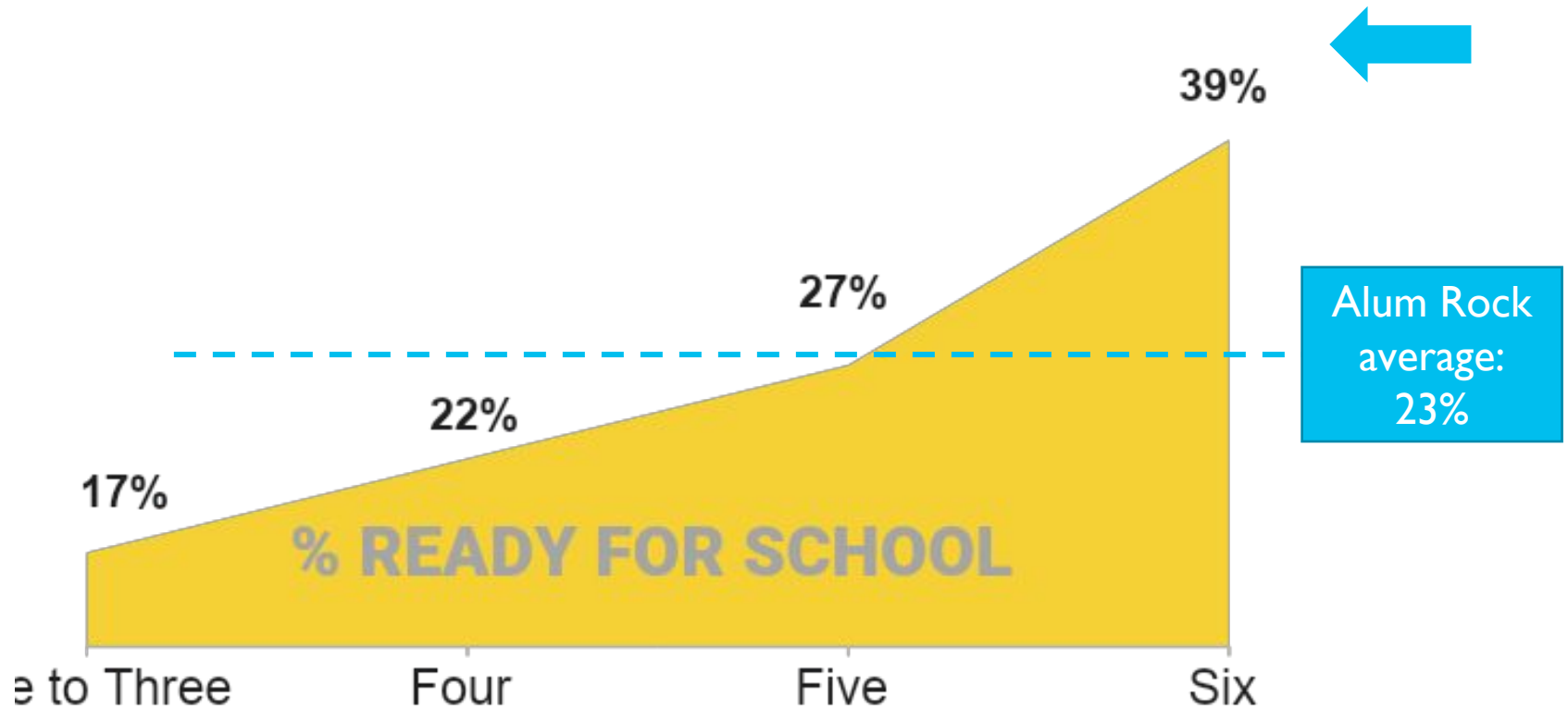
And fewer social determinants overall than the children countywide...



Source: Santa Clara County school readiness assessment, 2018. N=825

Social Determinants and Readiness

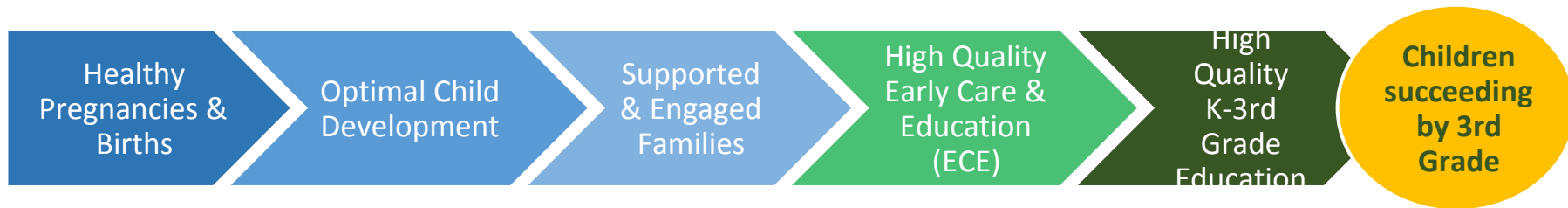
- The more social determinants Alum Rock children have, the more ready they are for kindergarten



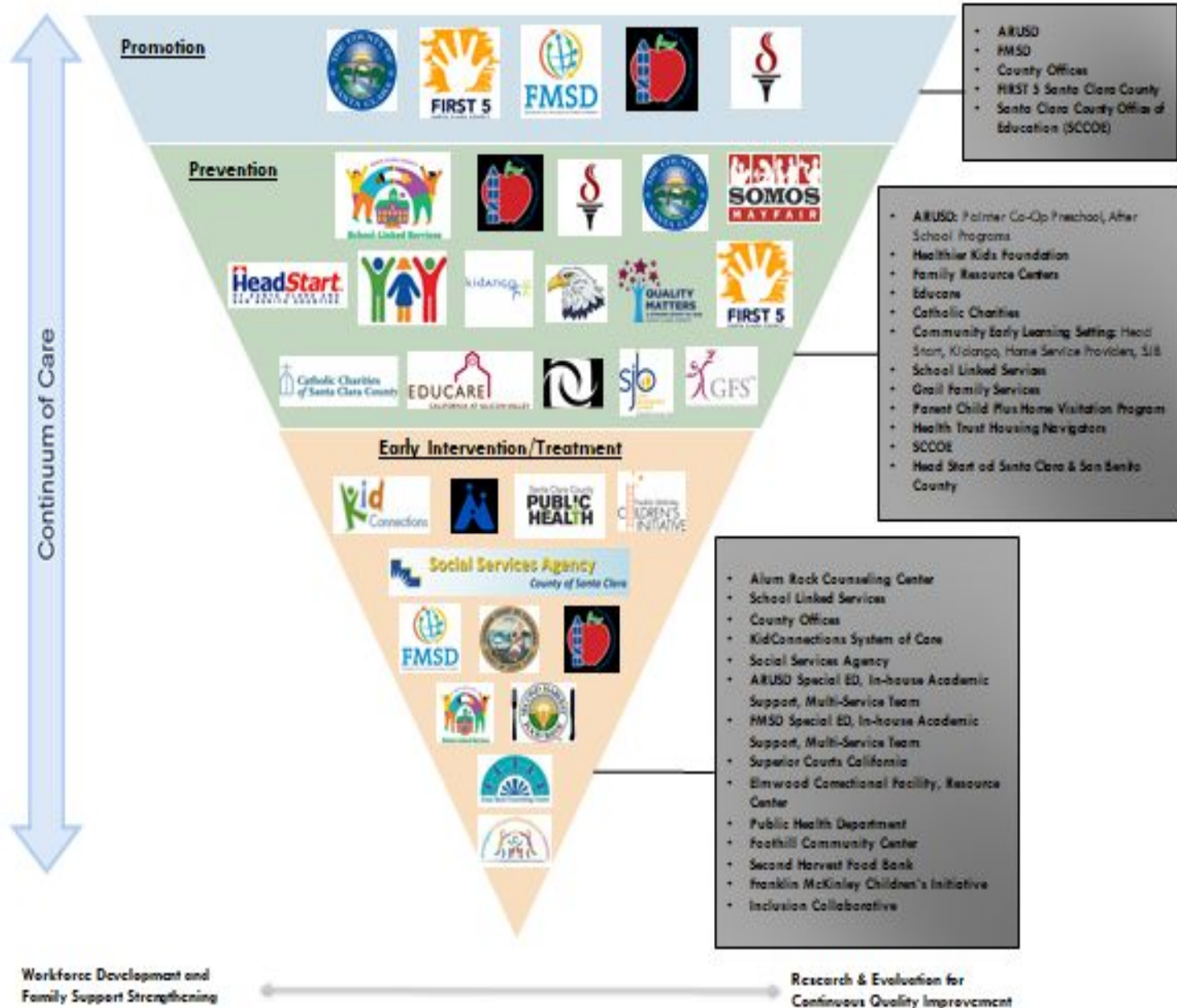
Turning the Curve on Early School Success in Alum Rock: Universal Access Pilot



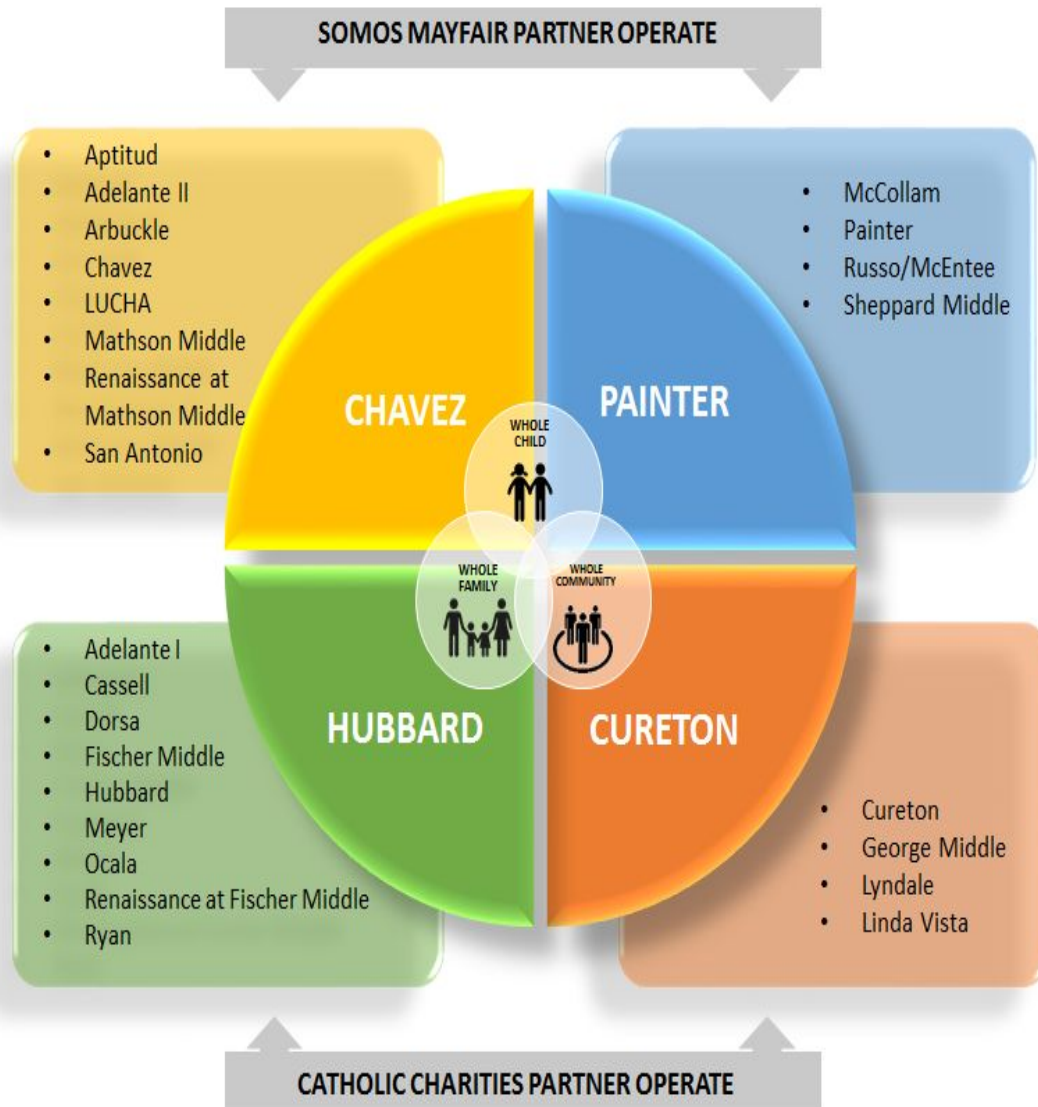
Creating the UAP Blueprint



- Studies show about 70% of “kinder-ready” children will be reading at grade level by 3rd grade
- The Universal Access Pilot is funded by the Board of Supervisors to create a blueprint or replicable model of pathways to success in Alum Rock and Franklin McKinley School Districts
- UAP leverages and better connects the existing services of community partners



ARUSD QUADRANT FAMILY RESOURCE CENTER MODEL SCOPE OF SERVICES

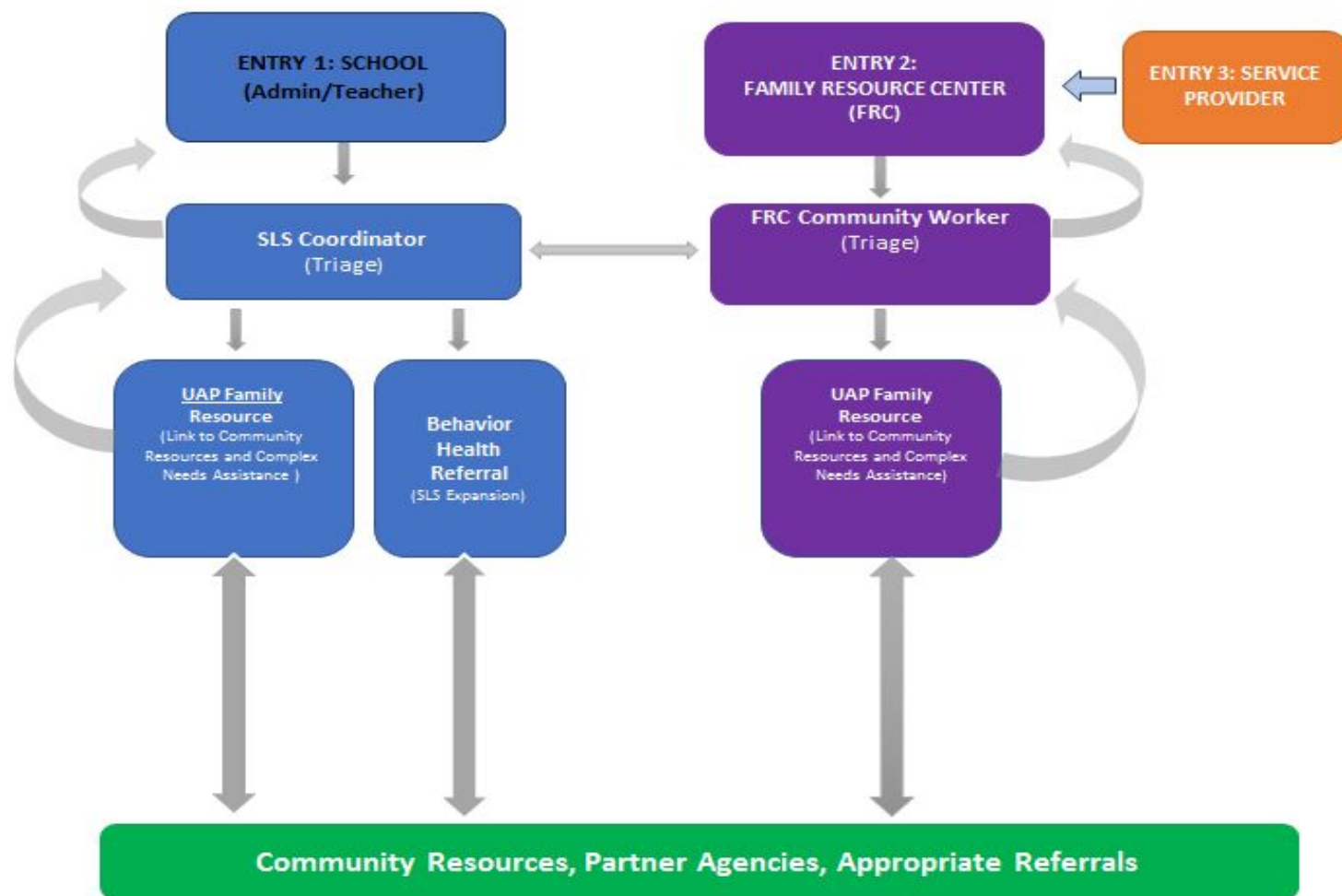


Family Resource Center Services Centralized Enrollment – communication and information on a number of programs, services, and activities for all families.

- ✓ Support with Preventative Services
- ✓ Children's Health Insurance
- ✓ Variations of quality early learning programs in ARUSD
- ✓ Education –preparing children for T4TK Kindergarten
- ✓ How to enroll in TK-12th
- ✓ Document Assistance & District Schools
- ✓ Healthy Eating & Nutrition
- ✓ Assessments
- ✓ Developmental Screenings ASQ's.
- ✓ Health Child Screenings-oral, vision, dental, and support with referrals to other specialist agencies
- ✓ Fun activities and social gatherings for families
- ✓ Volunteer & leadership parent-guardian empowerment opportunities
- ✓ Community engagement with other Community Based Organizations (CBO)resources in our community inclusion collaborative
- ✓ Special Education
- ✓ SCCOE Migrant Education Region One
- ✓ Teen Parents
- ✓ Referral Home Services
- ✓ Visitations
- ✓ Assigned Therapeutic Services
- ✓ Mental Wellness Support Services
- ✓ Extended Year Programming
- ✓ School Linked Services
- ✓ County of Santa Clara Team –specialized county services
- ✓ Housing Resources
- ✓ Food Access
- ✓ Legal Issues
- ✓ Individual family needs that may emerge



Alum Rock Unified School District Service Delivery Flow Chart: Quadrant Model



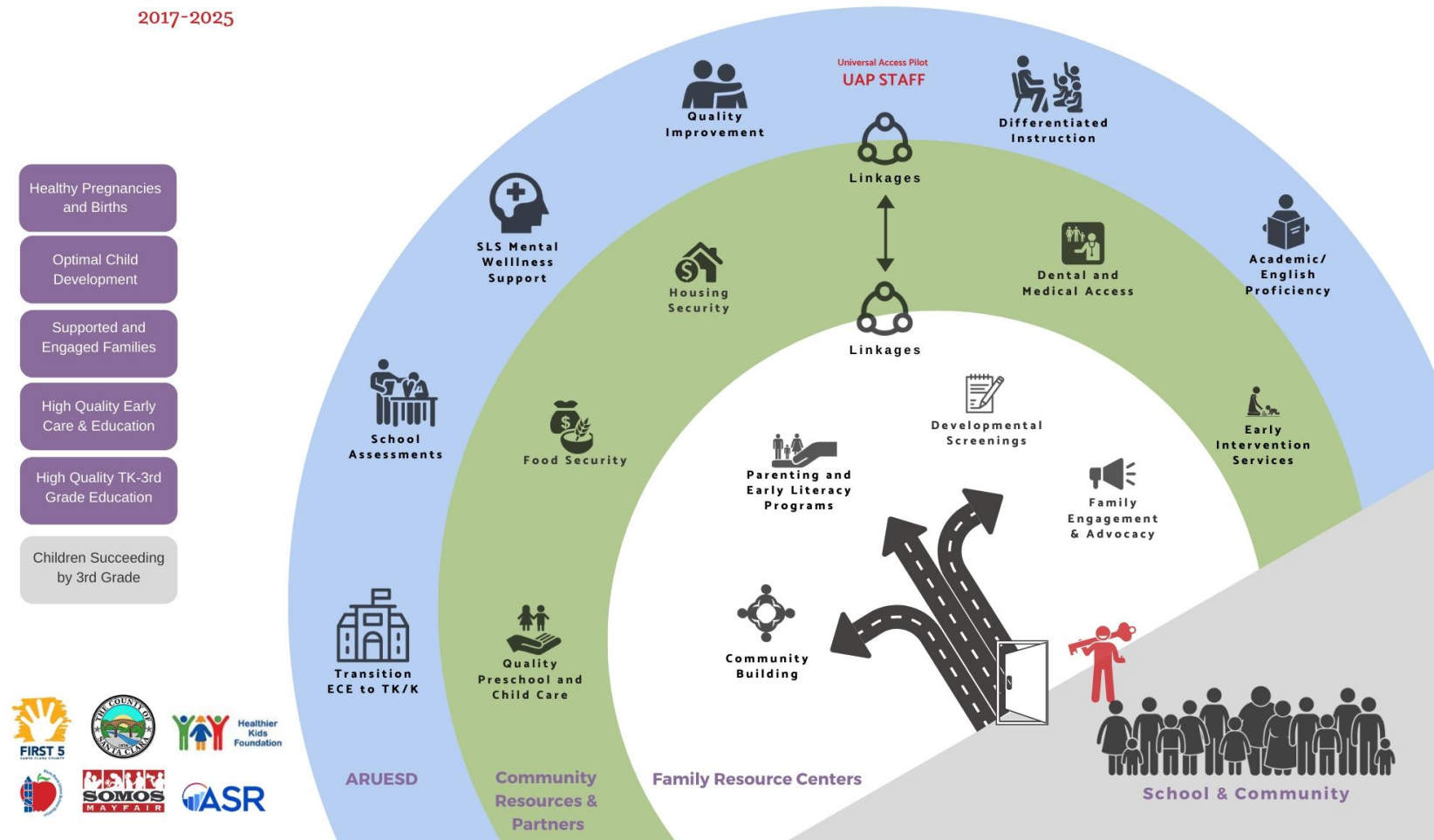
Alum Rock Union Elementary School District: Prenatal – 3rd Grade Pathway to Success



ARUSD Service Delivery Model

QUALITY FOR ALL Roadmap to a High-Quality Prenatal—3rd Grade Health & Early Learning System in Alum Rock Union Elementary School District
 Pathways to Success
 2017-2025

SERVICE DELIVERY MODEL



SOMOS Community Engagement



3 Year Trend

PARTICIPATION

2,010
2018-2019

Program Participation



SOMOS Mayfair Outcomes



PROGRAM OUTCOMES 2018-2019



Leadership Development

OUTREACH
7150

PARTICIPANTS
2010

TRAINED
258



Community Organizing

VECINOS
ACTIVOS
320

COMITE
EMPUJE
148

JOVENES
ACTIVOS
83



Literacy and Early Learning

ADULTS
PARENTING
WORKSHOPS
104

CHILDREN
ESCUELITA
649

PAINTER
CO-OP
24



Summer Programming

BRIDGE
TO KINDER
265

Students 148
Adults 65
Escuelita 56

GROWING
TOGETHER
118

Youth 54
Adults 32
Escuelita 32

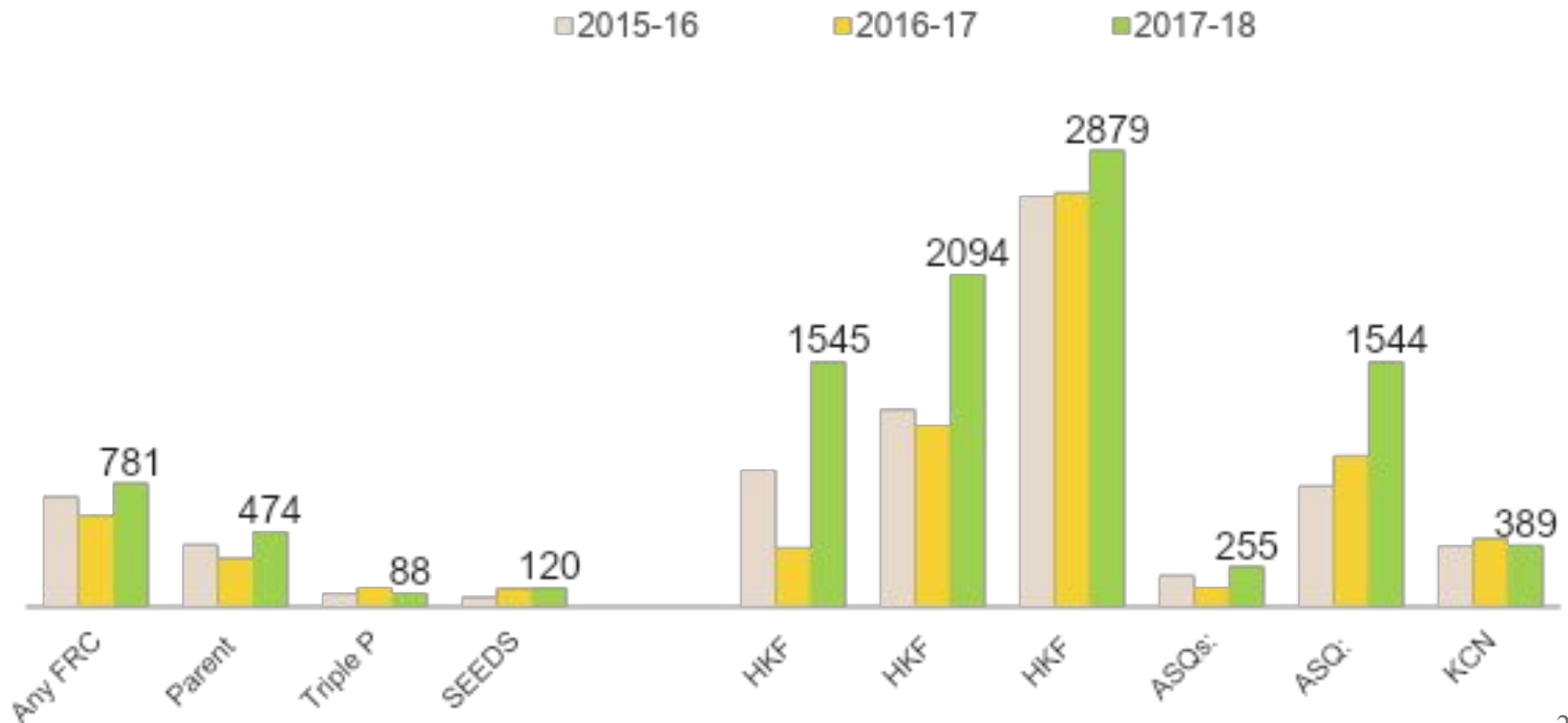
- **91%** of participants of Growing Together reported knowing how to **take action** in the community
- **17% decrease** in ASQ red flags in children participating in Escuelita
- **78%** of Leaders entering the **certification pipeline** remained active
- **100%** of Leaders reported **growing their Leadership abilities** this year
- **93%** of Leaders reported **having a sense of purpose**
- **100%** of Leaders reported **feeling part of the Somos Collective**

What early results are we seeing?



We are increasing access to services

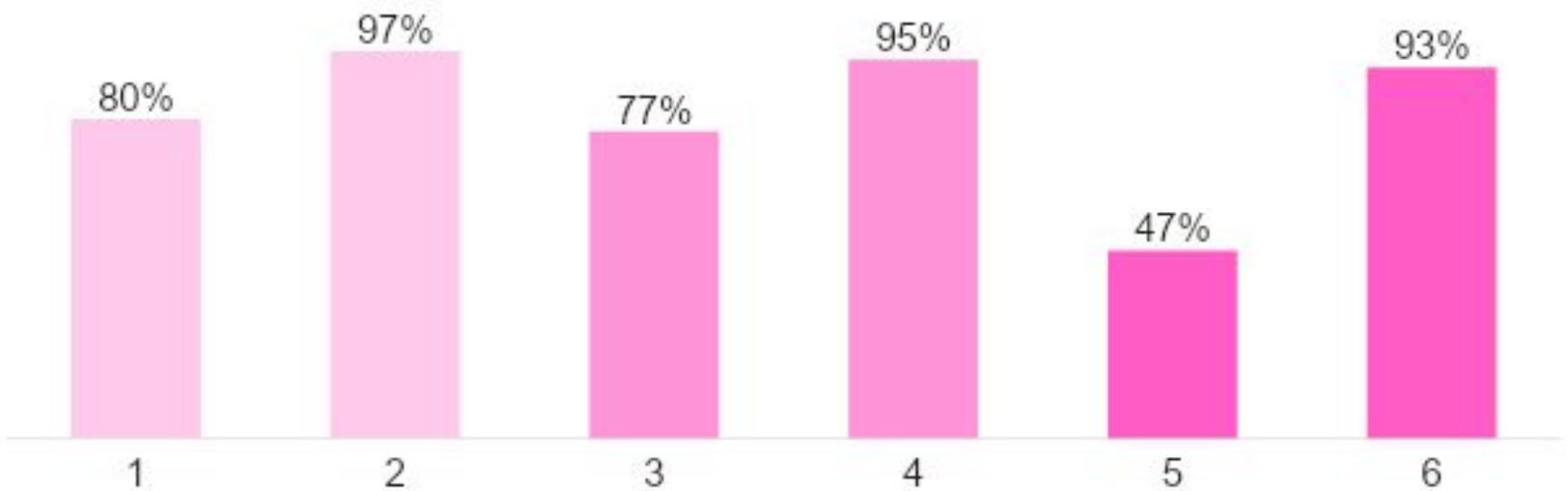
- Increased number of children/families have received Family Resource Center (FRC) services and health screenings



Source: F5 Santa Clara Service Data 2015-18.

Early health services matter

- Most children access physical and oral health care, but fewer than half of the sample in Alum Rock received developmental screenings, and over one in five had experienced a toothache



Quality preschool matters

- Children attending quality-rated early learning programs have higher readiness scores

Countywide
data



Source: Santa Clara County school readiness assessment, 2018. N=610-649. * $p < .05$; ** $p < .01$. Estimates are adjusted for age, sex, race/ethnicity (Hispanic or not), special needs, English Learner status, maternal education, family income, and single parenthood.

Family Resources Center services matter

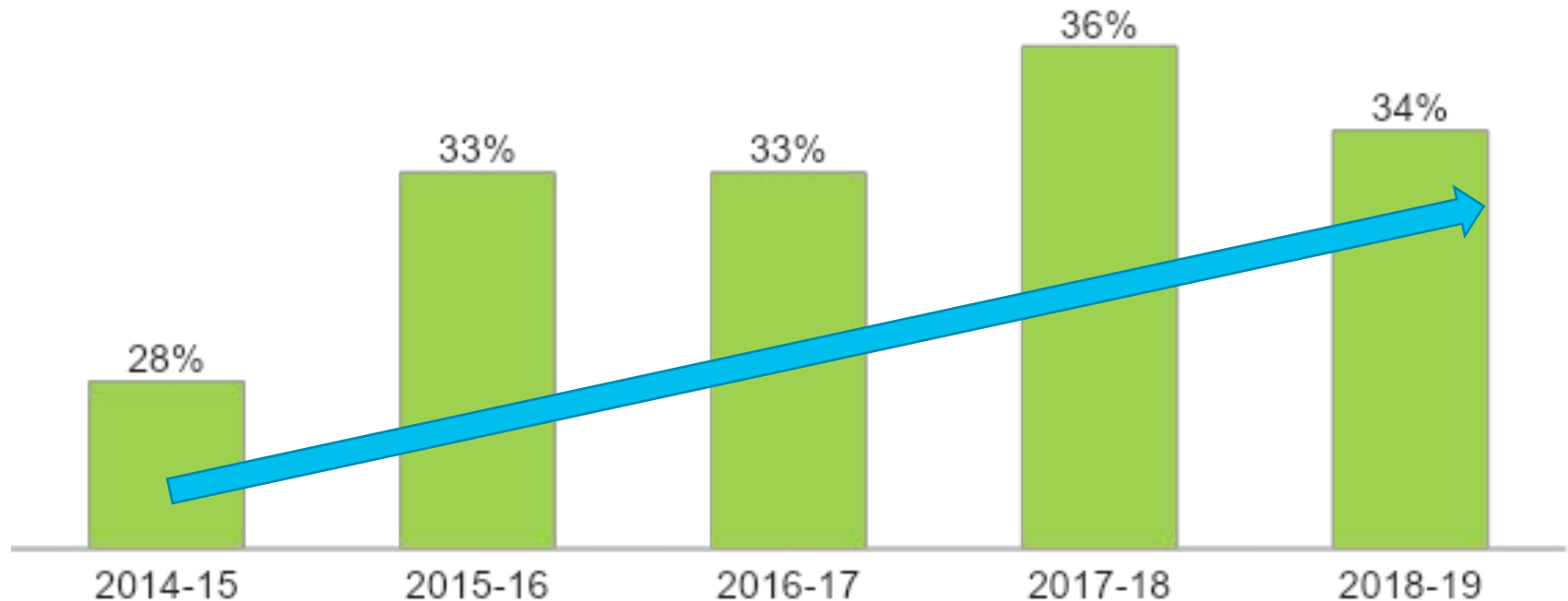
- Children who received FIRST 5's FRC services had higher Self-Regulation & Social Expression scores



Source: Santa Clara County school readiness assessment, 2018. N=235-252. +p < .10; *p < .05. Estimates are adjusted for race/ethnicity (Hispanic or not), special needs, English Learner status, age, sex, maternal education, family income, and single parenthood.

Third grade reading is increasing

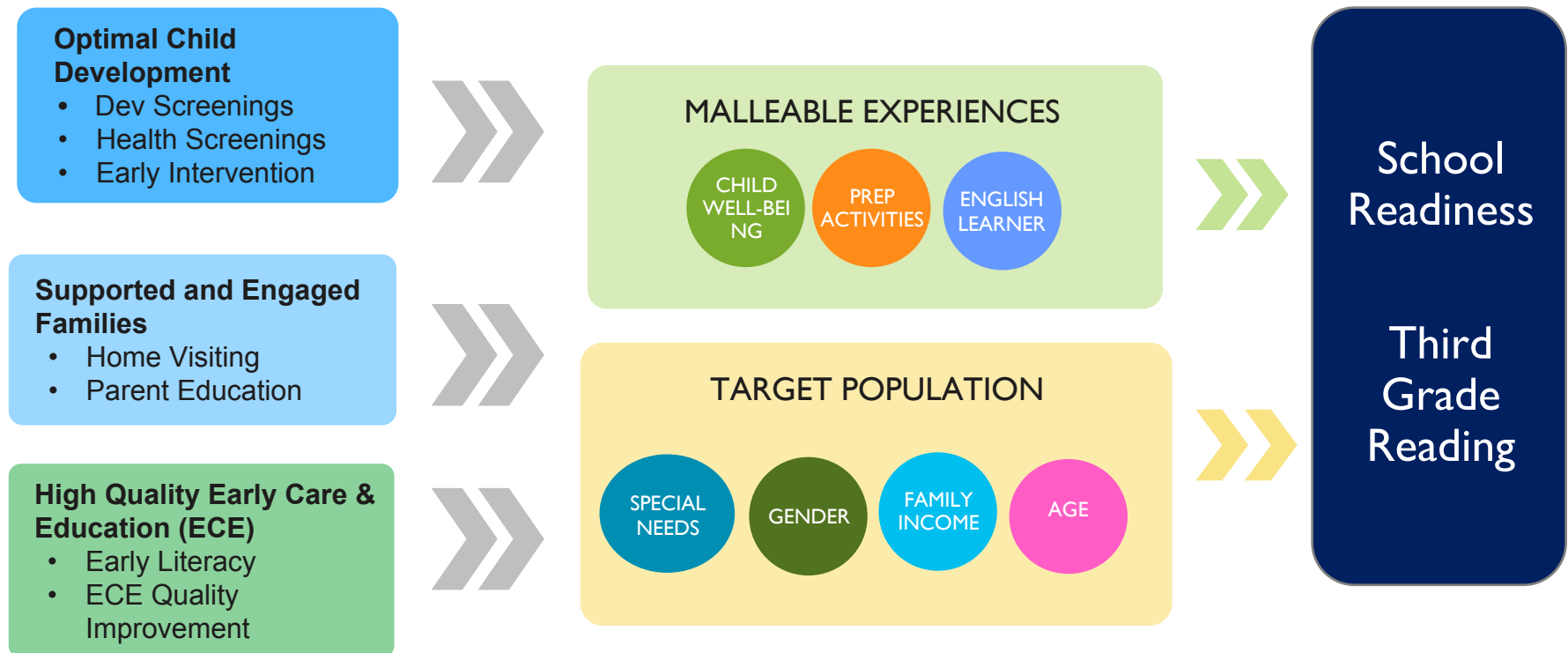
- The percentage of third grade students reading at grade level is increasing



Source: California Department of Education. Retrieved from DataQuest.

Conclusion

- Kindergarten readiness data confirms the UAP Pathways model is promoting the social determinants of health that are essential for kindergarten readiness and third grade success



Questions?

- Rene Sanchez
rene.sanchez@arUSD.org
- Wendi Mahoney-Gurahoo
FIRST 5 Santa Clara County
- Saul Gonzalez
- Lisa Colvig-Niclai
lisa@appliedsurveyresearch.org

