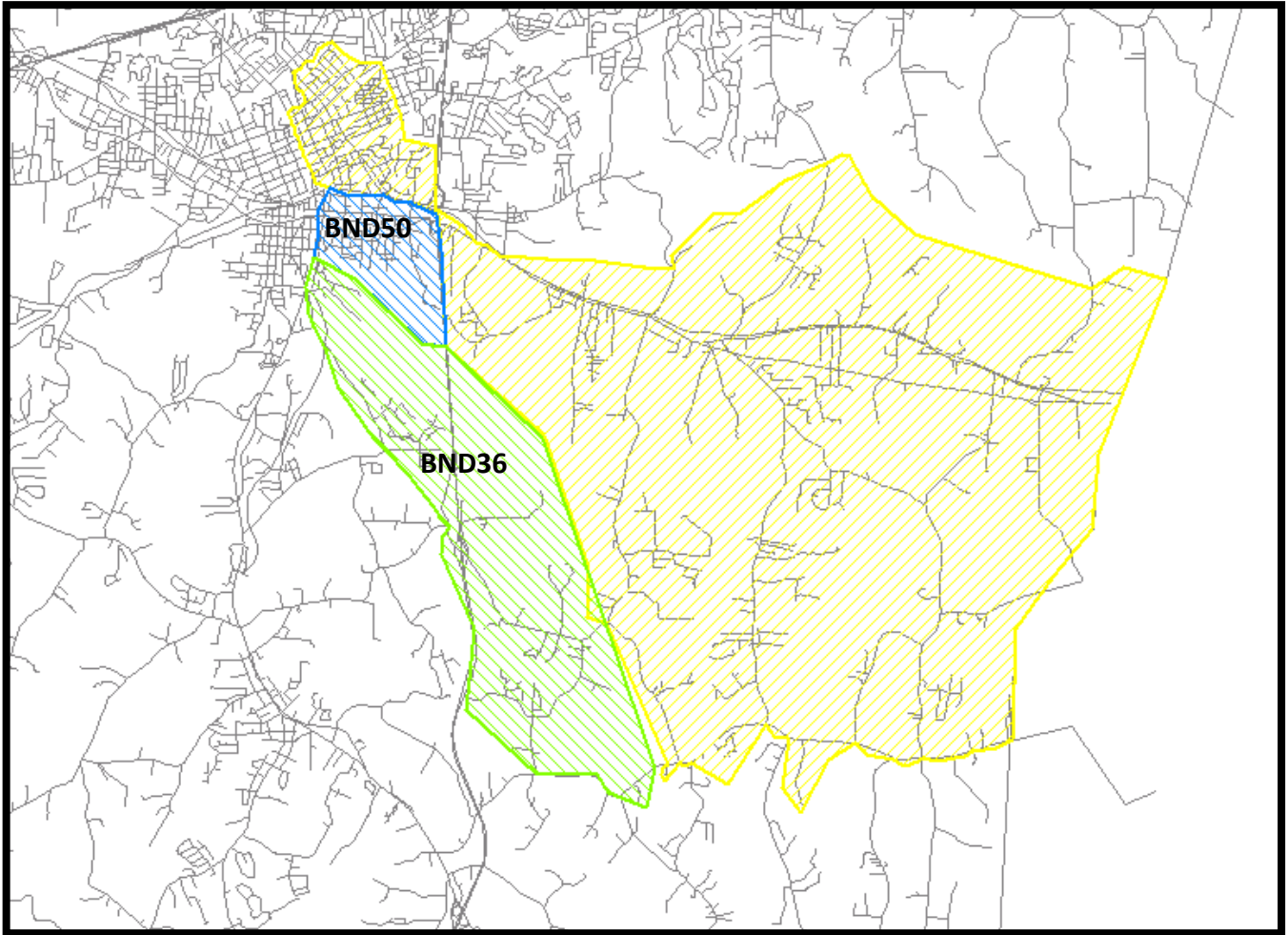
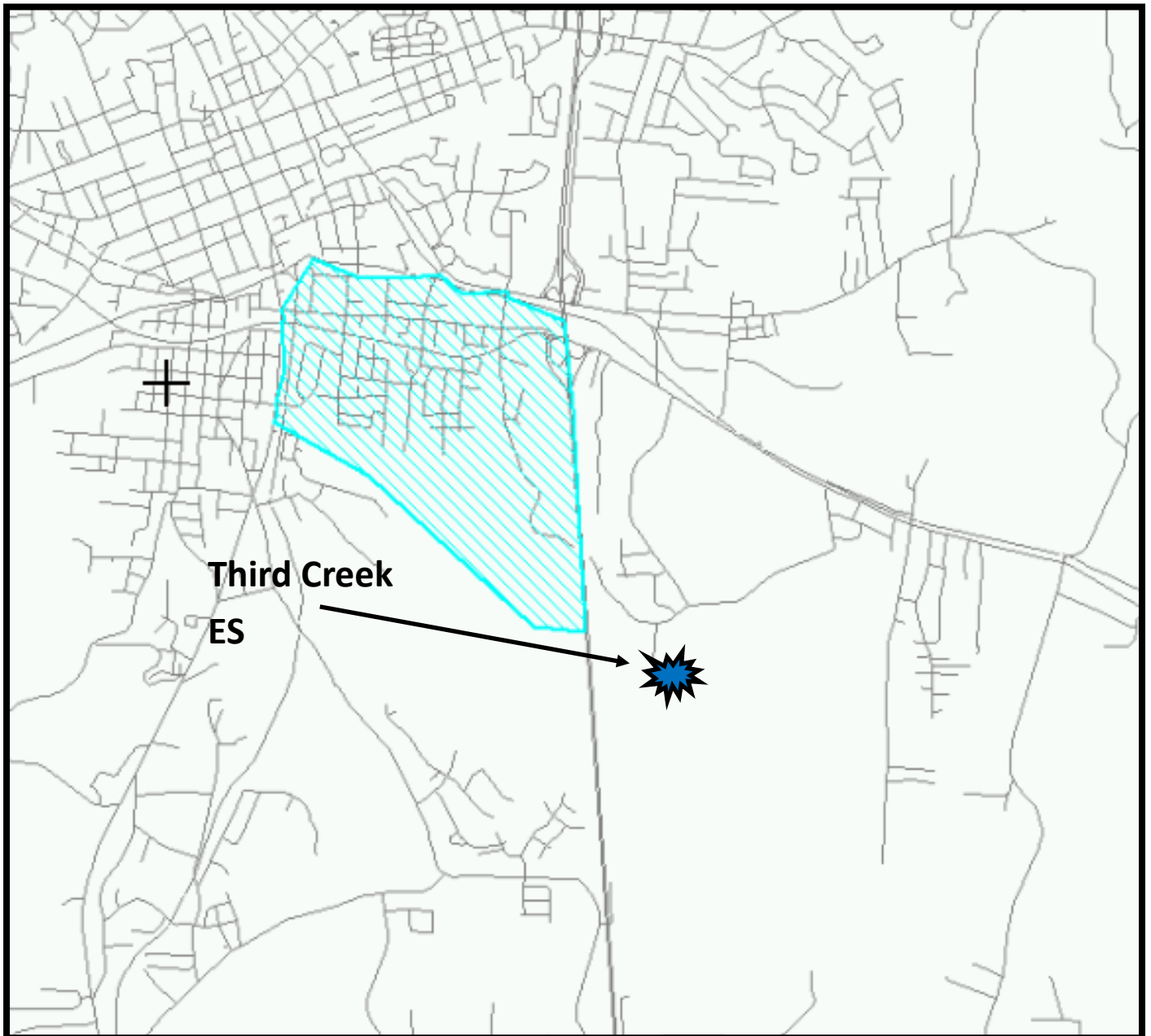


# Proposed Third Creek Elementary School Boundary 2020-2021 School Year



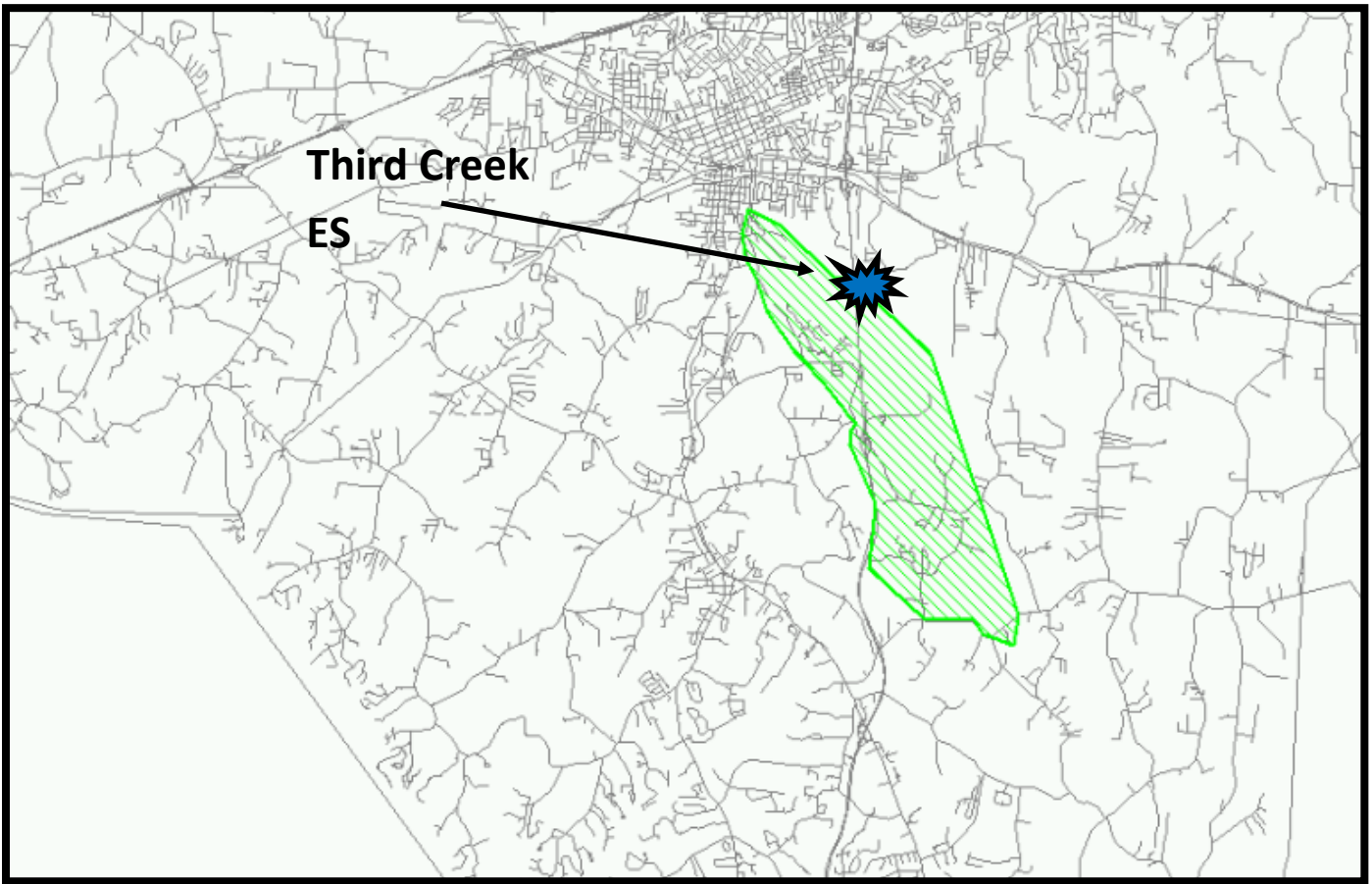


## **BND 50 (Proposed )**

**West = Shelton Av ~ East = Wall St**

**North = Jefferson & Monroe St ~ South = Garner Bagnal Bl**

**East Iredell ES to Third Creek ES = 132 Students**



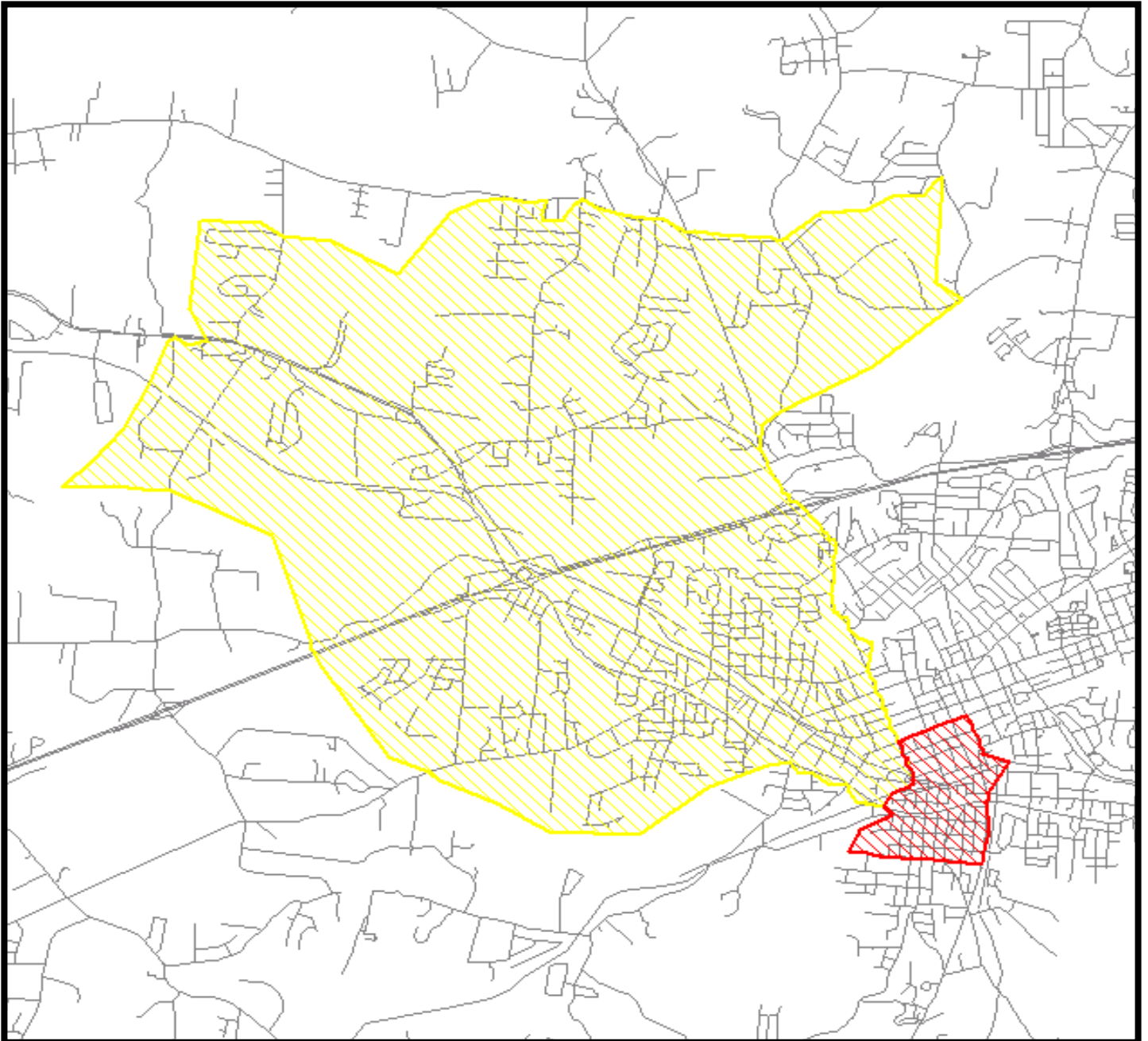
## **BND36 (Proposed)**

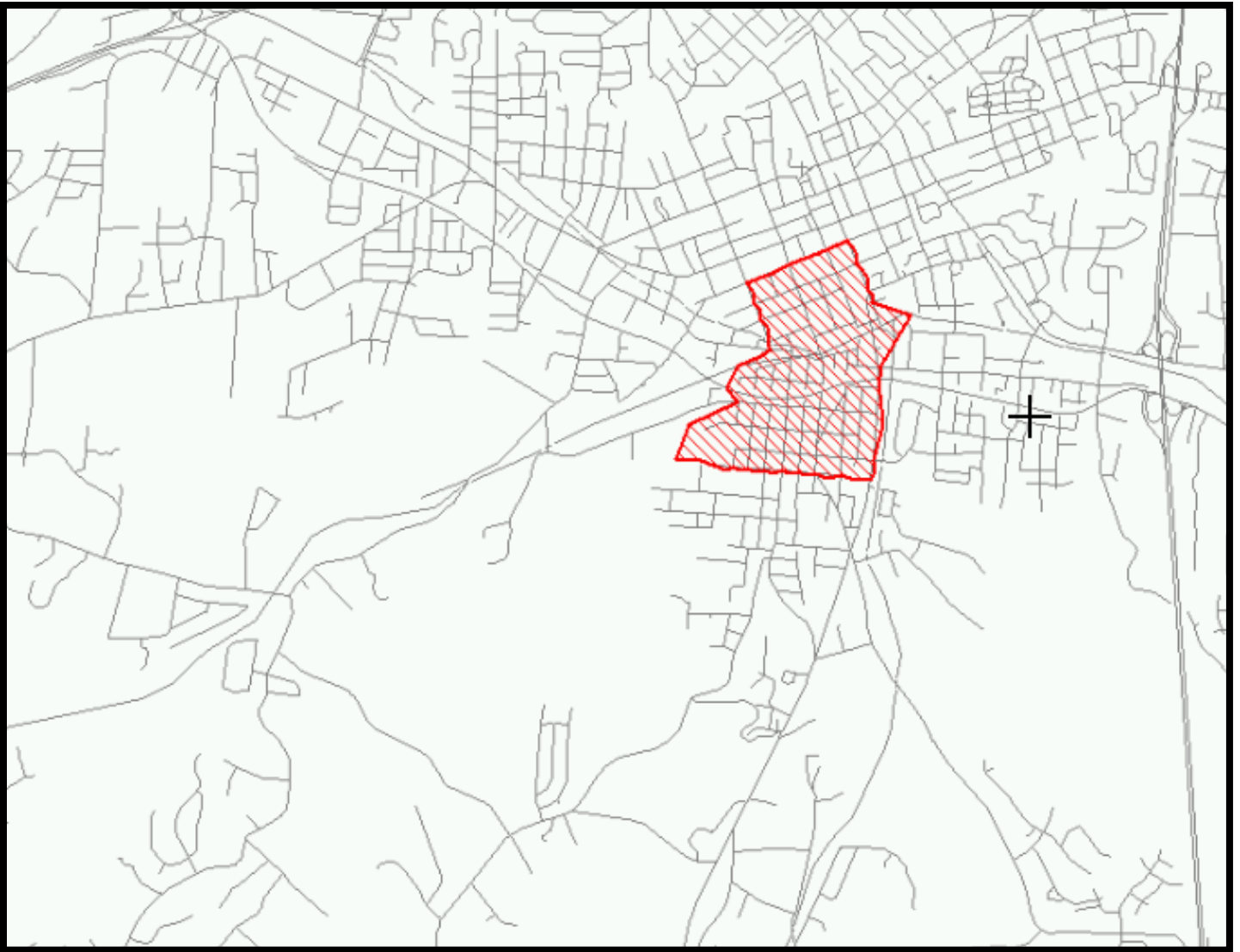
**West = Shelton Av ~ East = Shiloh Rd**

**North = Whites Mills Rd ~ South = Ostwalt Amity Rd**

**Troutman ES to Third Creek ES = 111 students**

**Proposed**  
**NB Mills Elementary School**  
**Boundary 2020-2021 School Year**





## **BND 43 (Proposed )**

**West = S Race St ~ East = S Center St**

**North = West Sharpe St ~ South = Newbern Av**

**Cloverleaf ES to NB Mills ES = 81 students**