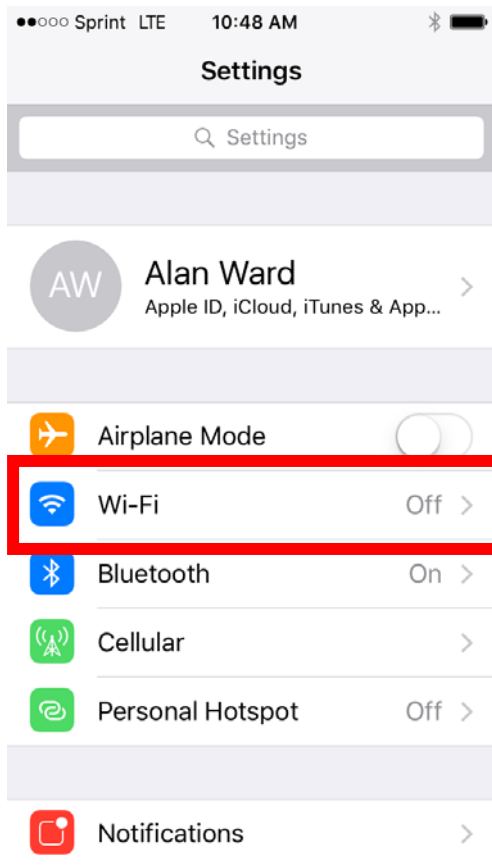
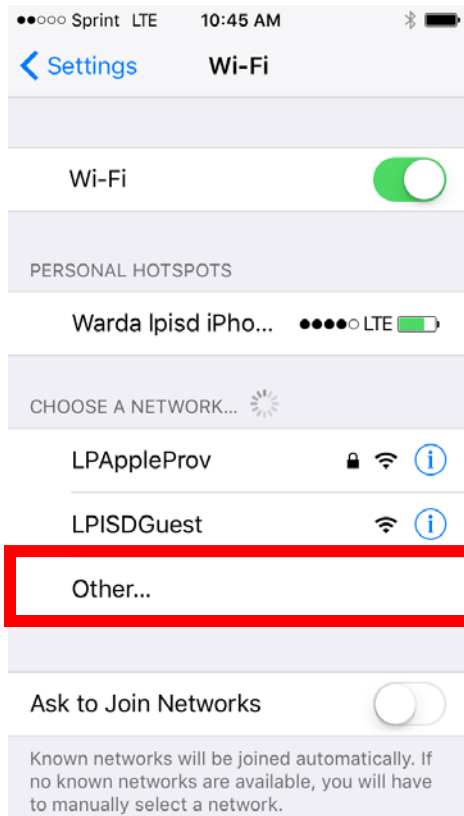


Connect your iDevice to the LPISD Wi-Fi using your District Username

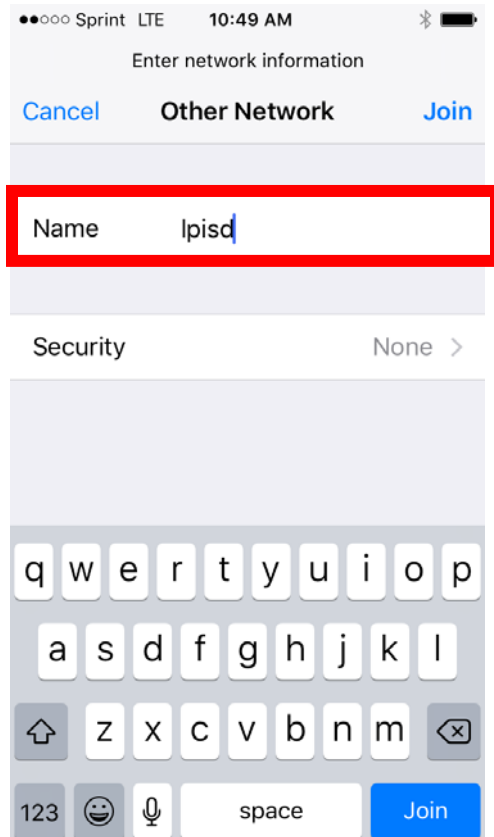
1. Go to Settings, and then press Wi-Fi.



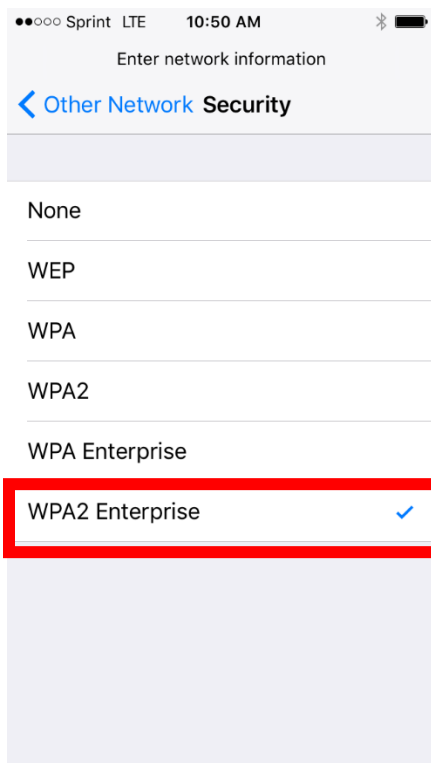
2. If Wi-Fi is off, turn it on by switching it on, then press “Other”.



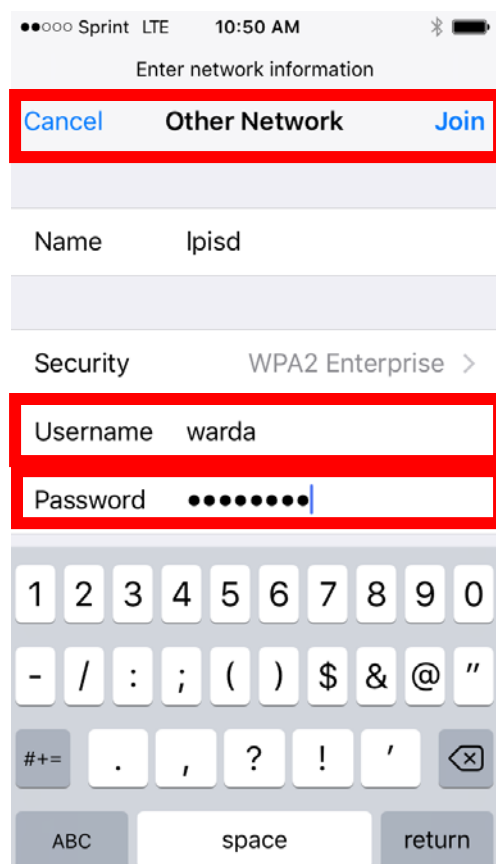
3. Type “Ipsid” for the Name, then press Security.



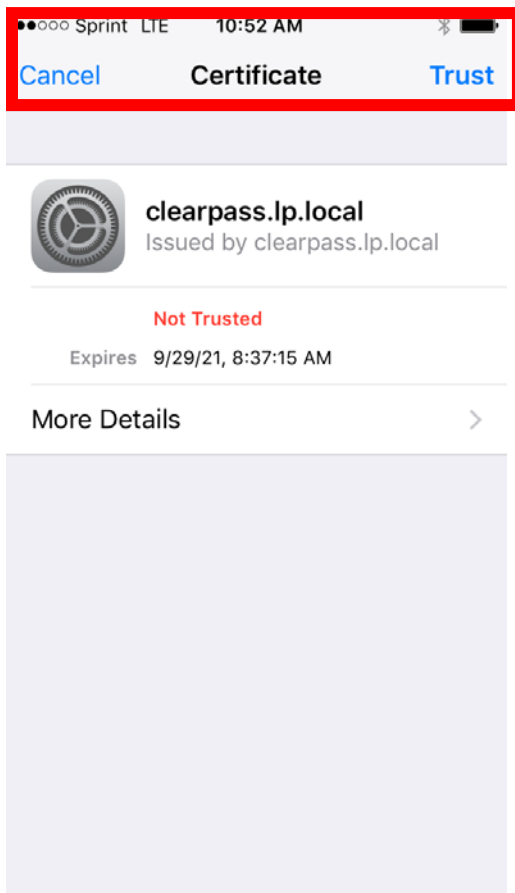
4. On the Security page, press “WPA2 Enterprise”. Then press “Other Network” to go back to the previous screen.



5. Type your District Username in the Username field. Then type your password in the Password field. Press “Join”.



6. Press “Trust” to accept our network certificate.

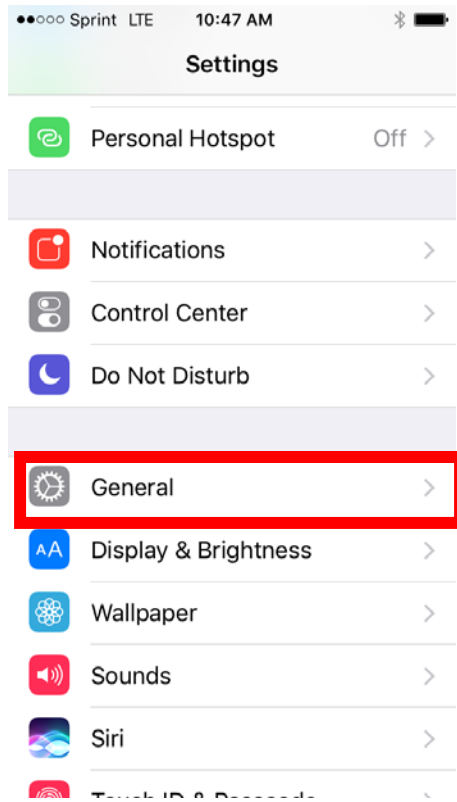


7. You can now press Home button and return to the main screen. The Internet will now be accessible over the LPISD Wi-Fi network using your District Username.

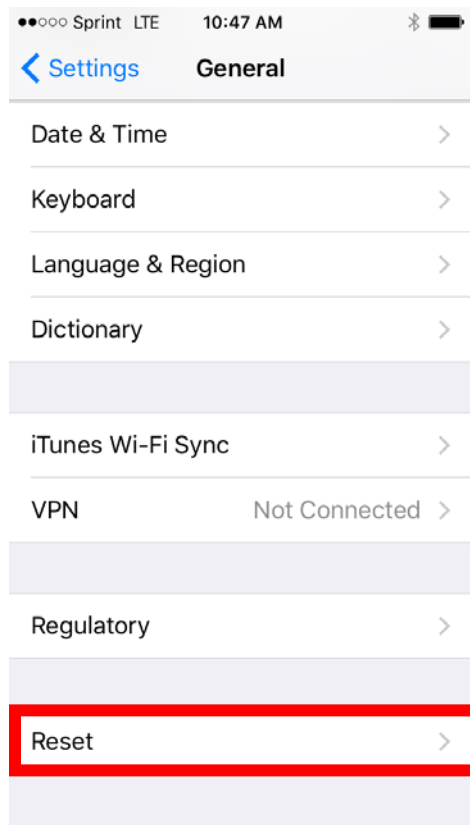
Remove your User Account and Network Settings from the iDevice

If you will no longer be exclusive user of the device, you should remove the Wi-Fi connection associated with your account. This will ensure the Internet browsing and other activities of the future users of the device are not recorded under your name.

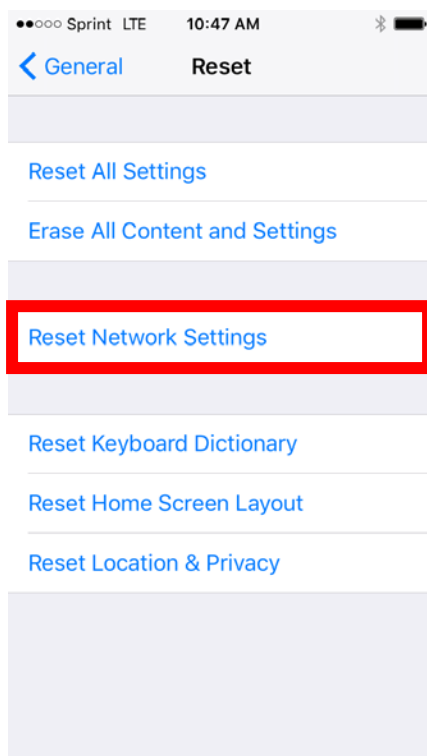
1. Go to Setting, and then press General.



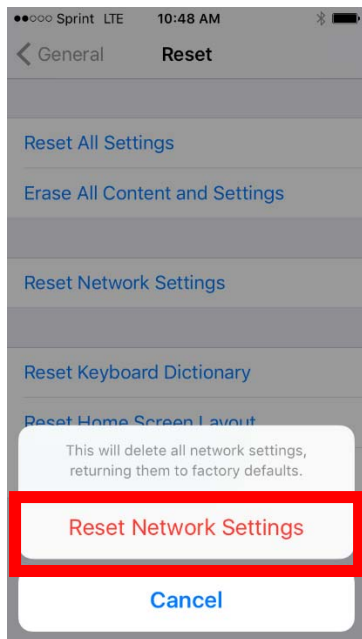
2. Scroll to the bottom of the page and press Reset.



3. Press “Reset Network Settings”.



4. **Confirm removal of network settings by pressing “Reset Network Settings” again.**



5. **Your User Account and Network Settings have been removed from the device.**
6. **The device will now reboot.**