



OREGON DEPARTMENT OF EDUCATION

Oregon achieves... together!

2018-19

Students We Serve



363 Student Enrollment

DEMOGRAPHICS

American Indian/Alaska Native	
Students	1%
Teachers	0%
Asian	
Students	1%
Teachers	0%
Black/African American	
Students	0%
Teachers	0%
Hispanic/Latino	
Students	9%
Teachers	4%
Multiracial	
Students	7%
Teachers	0%
Native Hawaiian/Pacific Islander	
Students	0%
Teachers	0%
White	
Students	82%
Teachers	96%

Ever English Learners



4 Languages Spoken

12% Students with Disabilities

93% Required Vaccinations

37% Free/Reduced Price Lunch

<10 students or data unavailable

School Website: www.philmathsd.net

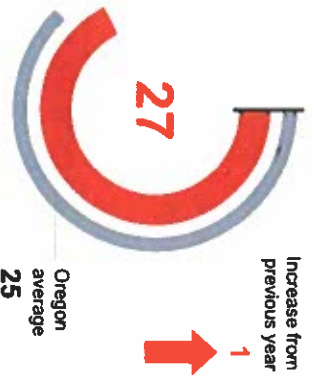
OREGON AT-A-GLANCE SCHOOL PROFILE

PRINCIPAL: Steve Bell | GRADES: 6-8 | 2021 Chapel Dr, Philmath 97370 | 541-929-3167

School Environment

CLASS SIZE

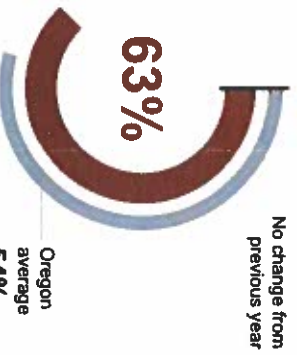
Median class size.



Academic Success

ENGLISH LANGUAGE ARTS

Students meeting state grade-level expectations.



School Goals

Phonics: School Districts work to include every student and transition each into a job, learning, or college. We support this by providing challenging experiences to all students with a focus on student growth. The key success factors at the middle school are:

Student Engagement: participation in school or P/T/C sponsored activities

Student Attendance: 85% average daily attendance

Learning: average score of level 4 or higher on a writing composition

Team Learning: proficient creation and presentation using math-makes

Math-demonstrates proficiency in understanding linear equations

Academic Progress

INDIVIDUAL STUDENT PROGRESS

Year-to-year progress in English language arts and mathematics.



SCIENCE

Students meeting state grade-level expectations.

Coming in 2019-20

Safe & Welcoming Environment

Programs and events at PMS that specifically support a safe and welcoming learning environment: Second Step-a weekly social emotional curriculum, Be Kind-a campaign of kindness, Connections-6th grade and 8th grade lunch time partnerships, Inspired-a character education program for all students, 8th Grade Mentors-guides for 6th grade students, Advisory-a daily period building community and contributing to our school culture.

For more information please visit: www.oregon.gov/ode/reports-and-data/



Oregon achieves... together!

OREGON DEPARTMENT OF EDUCATION

# OREGON AT-A-GLANCE SCHOOL PROFILE CONTINUED

2018-19

PRINCIPAL: Steve Bell | GRADES: 6-8 | 2021 Chapel Dr, Philomath 97370 | 541-929-3167

Our Staff (rounded FTE)



18 Teachers



6 Educational assistants



1 Counselors



13% Average teacher turnover rate



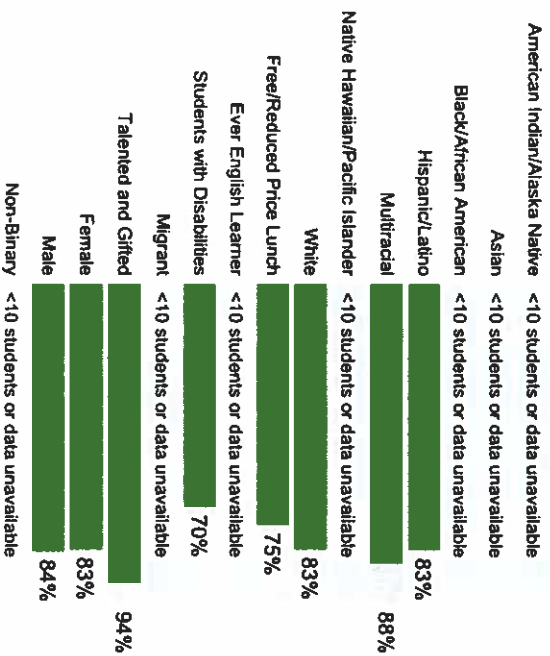
82% % of licensed teachers with more than 3 years of experience



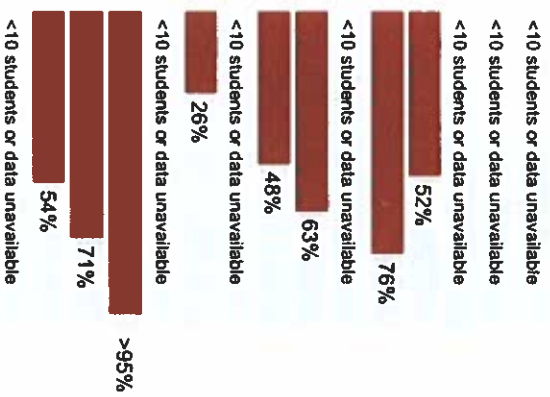
Yes Same principal in the last 3 years

## Outcomes

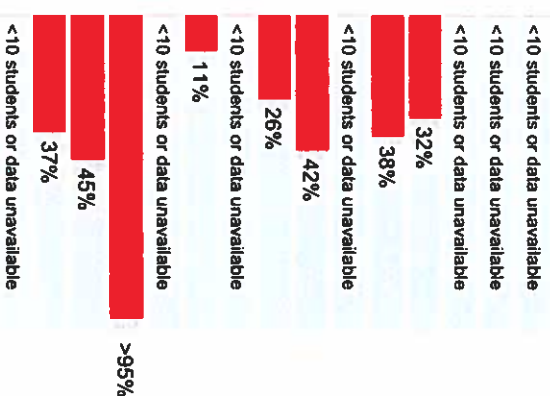
### REGULAR ATTENDERS



### ENGLISH LANGUAGE ARTS



### MATHEMATICS



## About Our School

### BULLYING, HARASSMENT, AND SAFETY POLICIES

It is the responsibility of the Philomath Middle School community to provide a safe and secure environment for all people through programs such as:Passport-Positive behavior support recognition,HERO Challenge-a bullying prevention and self-awareness activity for all 7th grade students,Boys Council-empowering boys to become self-motivated and build friendships,Girls Circle-empowering girls to become self-motivated and build friendships, Yoga Calm-students select to participate in a self-regulation activity,Active Supervision-students are known by name, and engaged at school,As a school building we observe and practice the "I Love U Guys" procedures for school safety.

### EXTRACURRICULAR ACTIVITIES

Philomath Middle School provides opportunities for students to participate in activities and athletics before, during, and after the school day such as: Drama, Archery, Intramurals, Basketball, Cross Country, Track, Oregon Ballie of the Books, Jazz Band, and PHRED Robotics.

### PARENT ENGAGEMENT

Site Council-a monthly meeting that reviews school curriculum, professional learning, and social issues of middle school students  
Parent Conferences-Fall and Spring conferences are offered in the morning and evening  
Newsletter-a monthly publication of school events is published and distributed to parents  
Daily Announcements-The student announcements are updated daily on the school website  
WAZZLE-the digital grade book is available for parents to check on their child's assignments and attendance  
Honor Roll Assemblies-parents are invited to attend quarterly assemblies to celebrate student success

### COMMUNITY ENGAGEMENT

We appreciate community partnership and engage together in a variety of ways:  
Open House-we open our doors to the community for a tour and an opportunity to meet the school staff  
Career Day-community members share their careers with our students  
Rotary Student of the Month-honors an 8th grade student each month  
Veterans Day Assembly-honors the Veterans of our community  
Can Food Drive-student led drive that benefits the Philomath Food Bank  
Philomath Youth Activities Club-providing student athletics/activities  
Strengthening Rural Families-provides support to families in rural Benton County.