

# Bringing Social and Emotional Learning into YOUR Classroom

**FCIS**

**November 8, 2019**

# Bringing SEL into YOUR Classroom

The absolutely vital role of  
teachers

\* Making SEL Skill-Based and  
Intentional

\* Why and How it Works

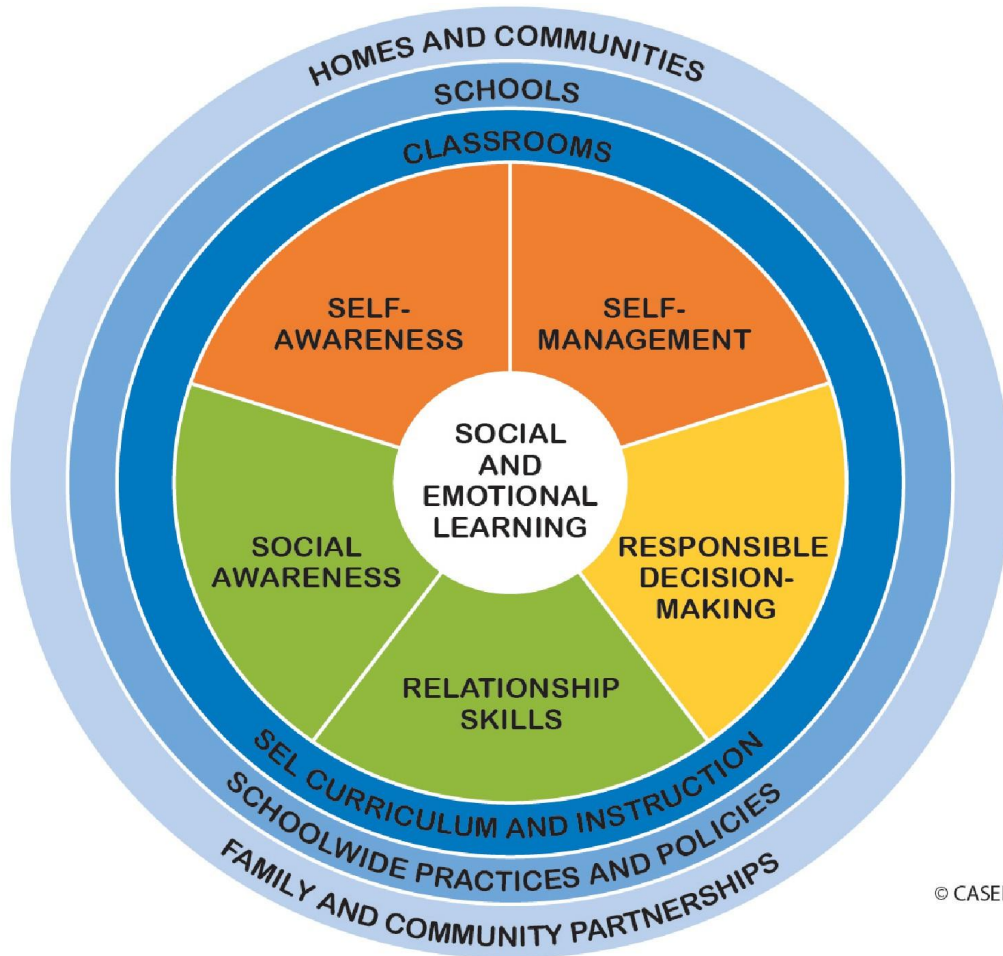
\* Core Practices

---

**What must our students know in order to be a part of a cooperative, rigorous, and supportive classroom community?**

Denton, P. & Kriete, R. (2000) *The First Six Weeks of School*. Turners Falls, MA: Northeast Foundation for Children

---

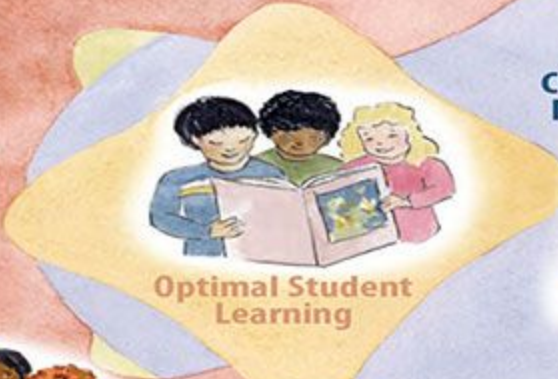


© CASEL 2017

- *Aligned Policies, Practices, and Procedures*
- *Resource Allocation*
- *All-School Activities*
- *Family and Community Involvement*
- *Physical Environment*



**Schoolwide Practices**



**Optimal Student Learning**

**Classroom Practices**



**Adult Community**

- *Strong, Focused Leadership*
- *Shared Vision and Planning*
- *Common Beliefs and Behaviors*
- *Shared Professional Development*
- *Adult Community Building*

- *Morning Meeting*
- *Rule Creation*
- *Interactive Modeling*
- *Positive Teacher Language*
- *Logical Consequences*
- *Guided Discovery*
- *Academic Choice*
- *Classroom Organization*
- *Working with Families*
- *Collaborative Problem Solving*

# Three Key Areas of SEL Knowledge

\* Neuroscience of Emotion and Learning

\* School Climate and Relationships

\* Health, Wellbeing, and Resilience

---

# Emotion & Learning

---

# **School Climate and Relationships**

---



# Health, Wellbeing, & Resilience

---

# Supporting a Culture of Wellness in Schools

★ Listen to **STUDENT VOICE** and "allow them" to explore and change the education system

*I am an important piece of the puzzle and I will be missed*

★ Acknowledge & respect the **INDIVIDUALITY** of "each unique" school community

★ Inspire **ENGAGEMENT** using fun & meaningful learning activities

★ **Fundraise** if you can justify the means to the end in \$



★ Create an authentic **WELCOMING ENVIRONMENT**



★ Ensure easy access to **SERVICES & SUPPORTS** in schools

★ Focus on **BUILDING** and **SERVING** the local community



★ Teachers & staff **LEAD BY EXAMPLE** and model healthy behaviours, relationships and positive interactions



★ Create a sense of belonging through meaningful **CONNECTIONS**



@sylviaedukworfth

In creating classrooms that embrace the social and emotional development of students we, as teachers, allow a space to **care for** and **nurture** ourselves.

**RELATIONSHIPS!**

---

# FCIS Annual Convention

Orlando 2019

## TELL US WHAT YOU THINK!

Share your  
reflections and  
takeaways with the  
FCIS community!  
#FCISConv2019

- 1) Download the **EVENTMOBI APP** from an app store.
- 2) Open the app and select **2019 FCIS CONVENTION**.
- 3) Select the **FRIDAY** button.
- 4) Select the **SESSION TITLE**.
- 5) Scroll down to **SESSION FEEDBACK**.
- 6) Respond to the **3-QUESTION SURVEY**.

