



INITIAL SUBMISSION WISCONSIN ELEVATION



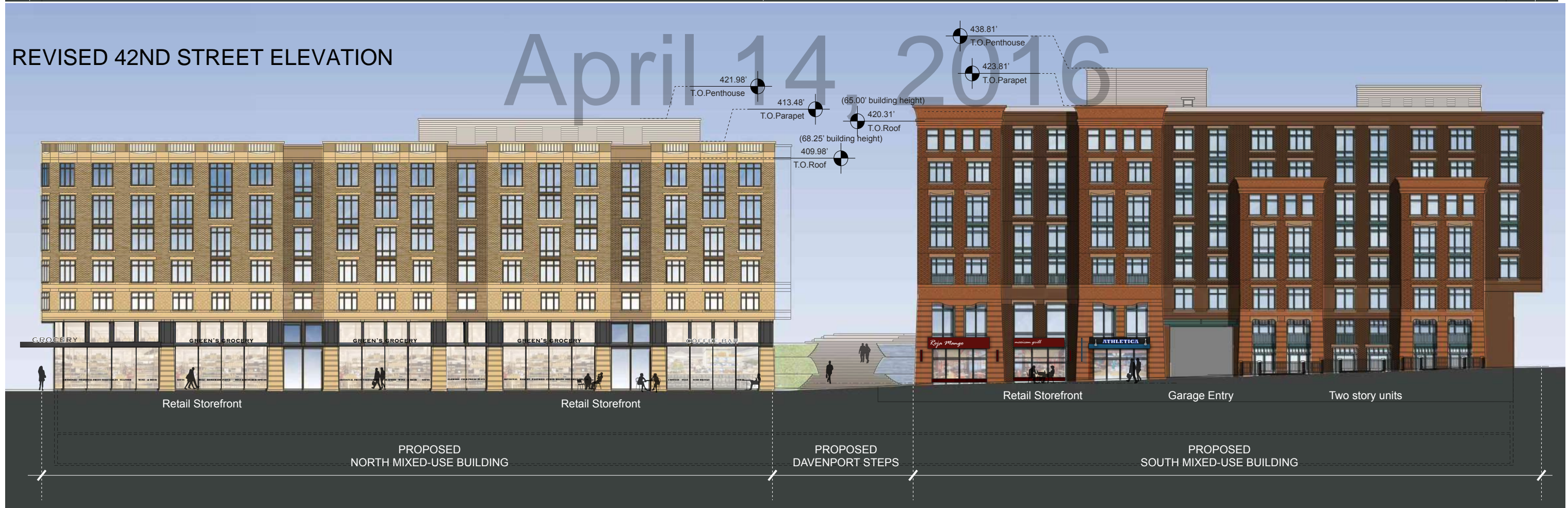
REVISED WISCONSIN ELEVATION



INITIAL SUBMISSION 42ND STREET ELEVATION



REVISED 42ND STREET ELEVATION

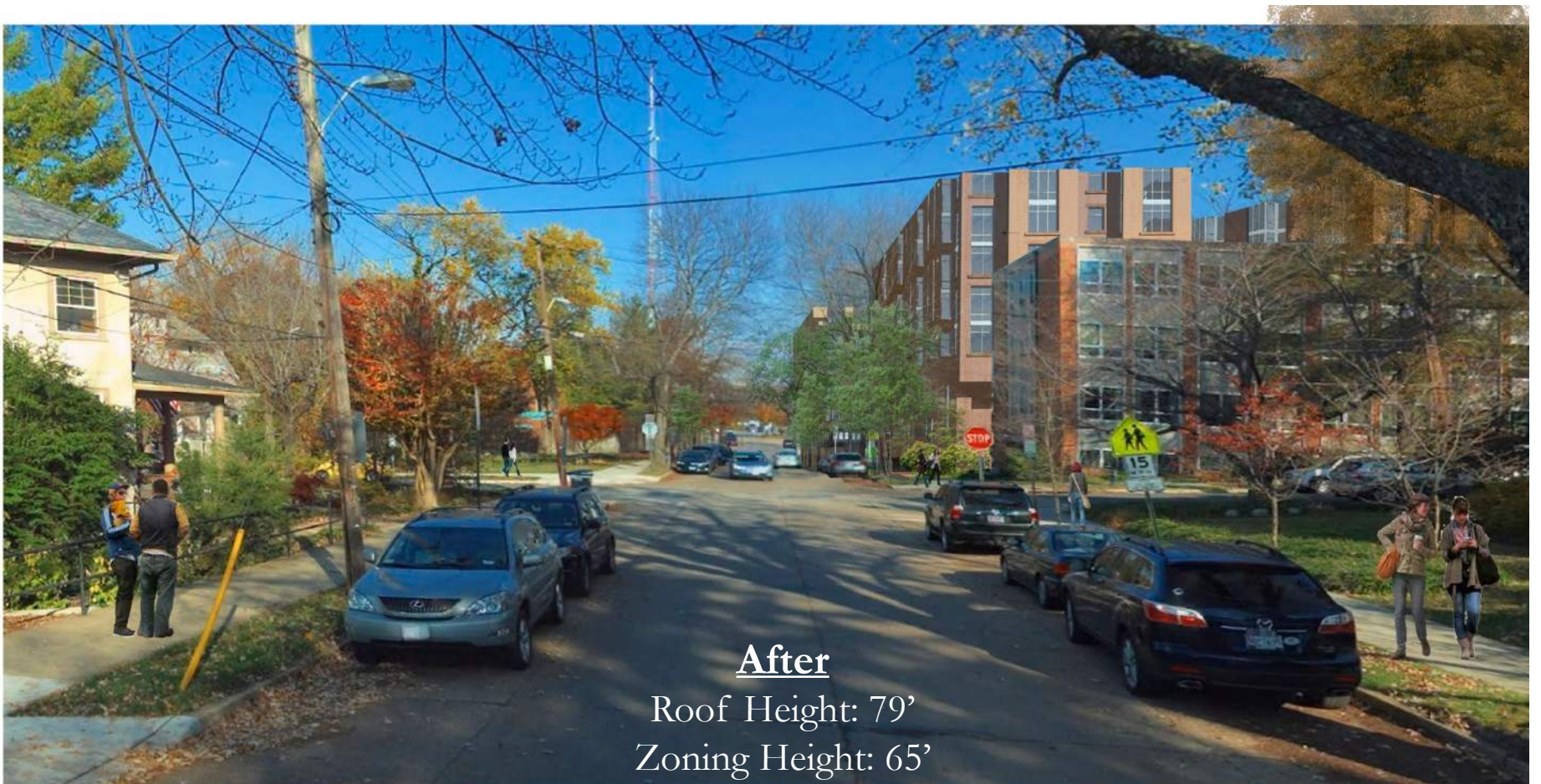




Before  
Roof Height: 94'  
Zoning Height: 80'



Area of Reduction  
-15'



After  
Roof Height: 79'  
Zoning Height: 65'

**42nd Street View - Looking North**

# GDS Transportation Management Plan

## FOUR WAYS TO GET TO GDS

1 ANC 3E Presentation 2 3 4



School Bus



Walk or Bike



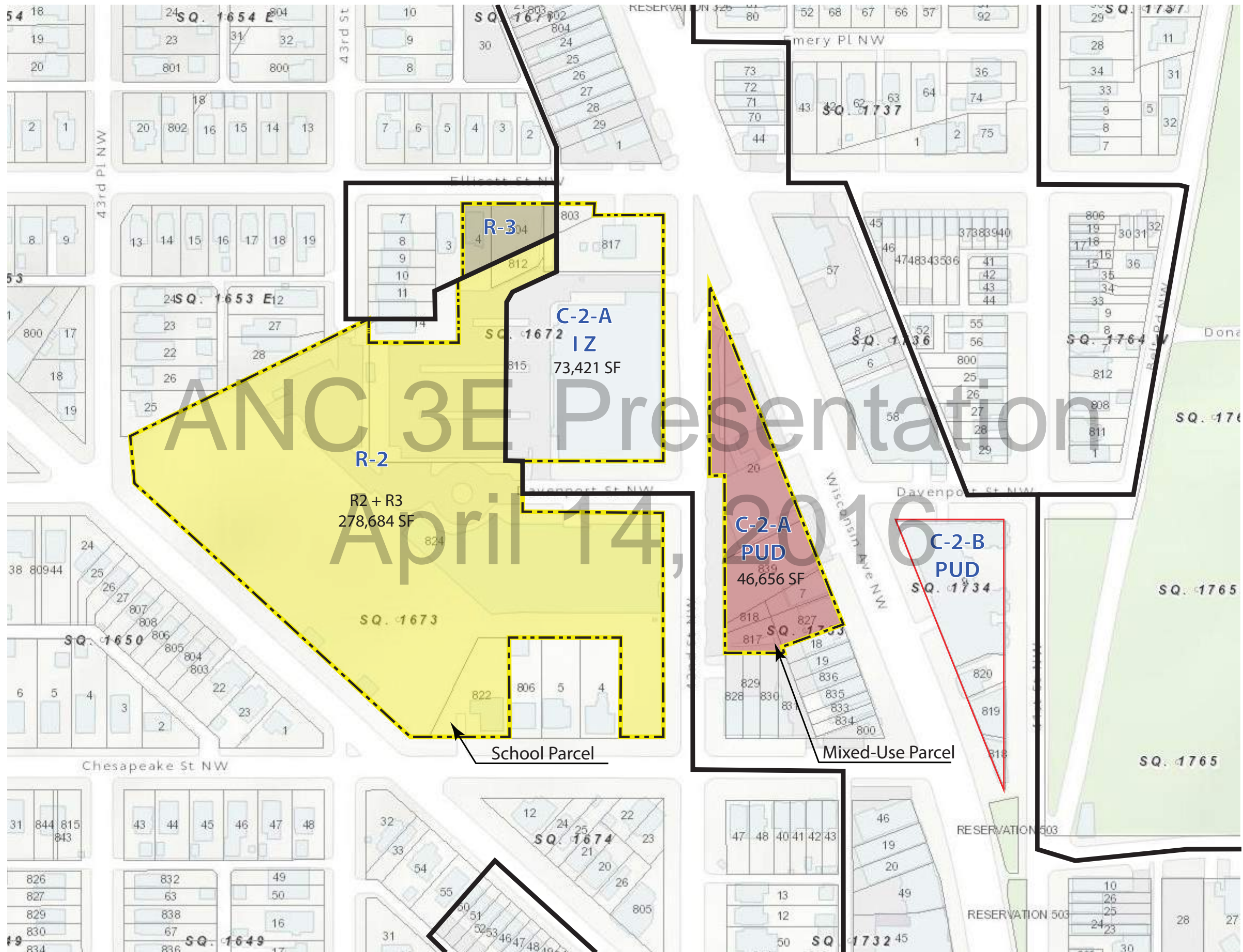
Car Pool



Public Transit

Good for GDS, good for the community, good for the planet.

Full plan is on website [www.gds.org/planning](http://www.gds.org/planning)





| <b>Asks in Original PUD</b>                          |
|--|
| 20' Right of Way on 42 <sup>nd</sup> Street          |
| Alley Closing on Ellicott Street                     |
| 80' Building Height for Mixed Use                    |
| Map Amendment from C2A to C2B                        |
| Closure of Davenport West of 42 <sup>nd</sup> Street |

| <b>Asks in Revised PUD</b>                              |
|---|
| 20' Right of Way on 42 <sup>nd</sup> Street             |
| Alley Closing on Ellicott Street                        |
| 65' - 68.25' Building Height for Mixed Use<br>(C2A PUD) |



## Partial List of Benefits and Amenities

Improve Pedestrian Intersections All Around School Parcel

Install New Traffic Light

Remove Slip Lane

Plant Grass/Trees in Ellicott Park

Build Davenport Steps for Public Use

Incorporate WMATA facility

Pay for Capital Bike Share Station

Provide Spaces for Car Share

Install Electric Car Charging Stations

Certify LEED Gold School/LEED Silver Mixed Use Buildings

Create Affordable Housing (13% overall)

Provide Reasonable Pedestrian Access through Campus

Provide Reasonable Access to Playground

Provide Reasonable Access to Theater

Provide Reasonable Access for Community Meetings

Provide Reasonable Access to Gallery for Community Art Exhibits

ANC 3E Presentation  
April 14, 2016