

# SCHOOL UNIFICATION: NEW LMS TOWN HALL

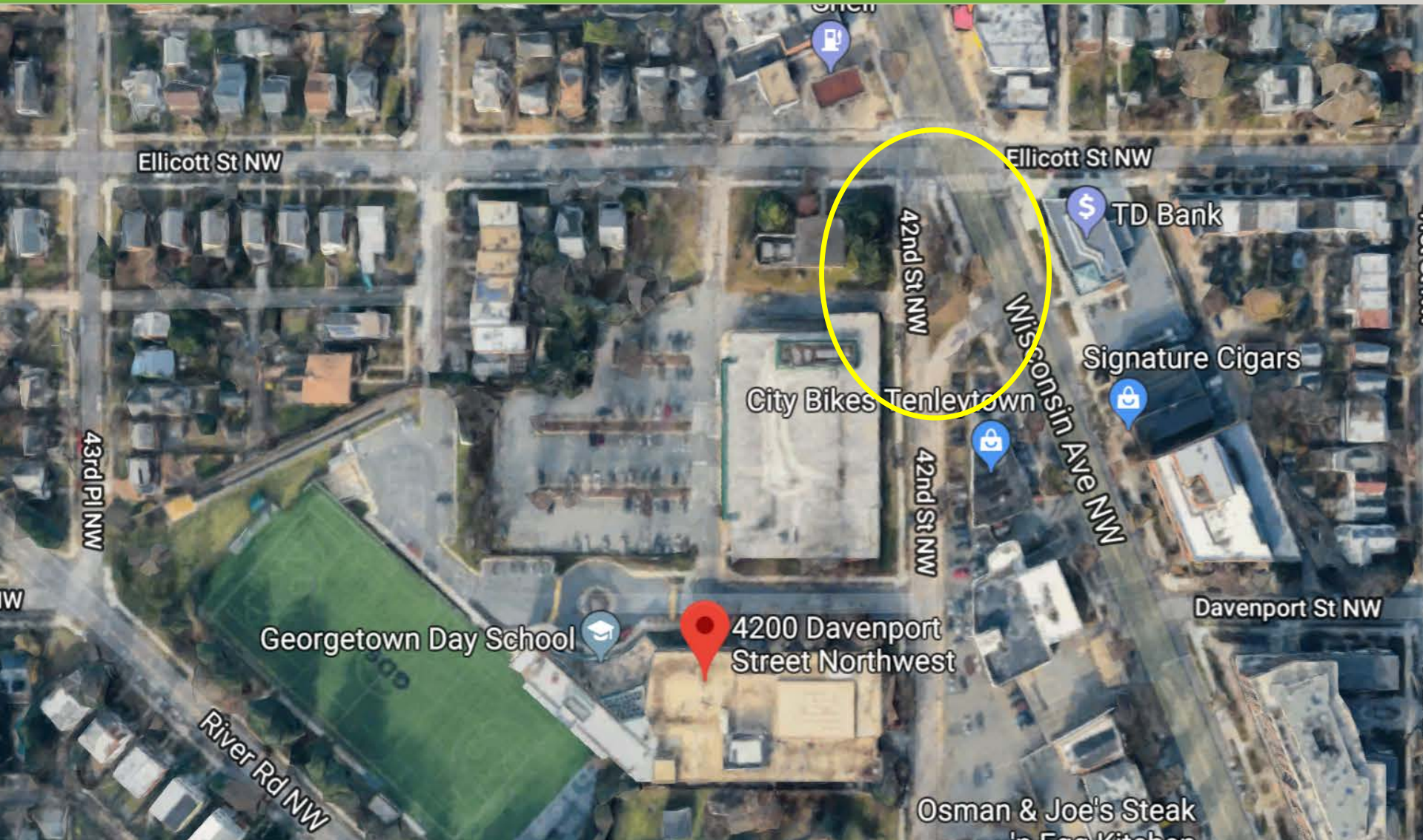
1 5 M a y 2 0 1 9



# Agenda

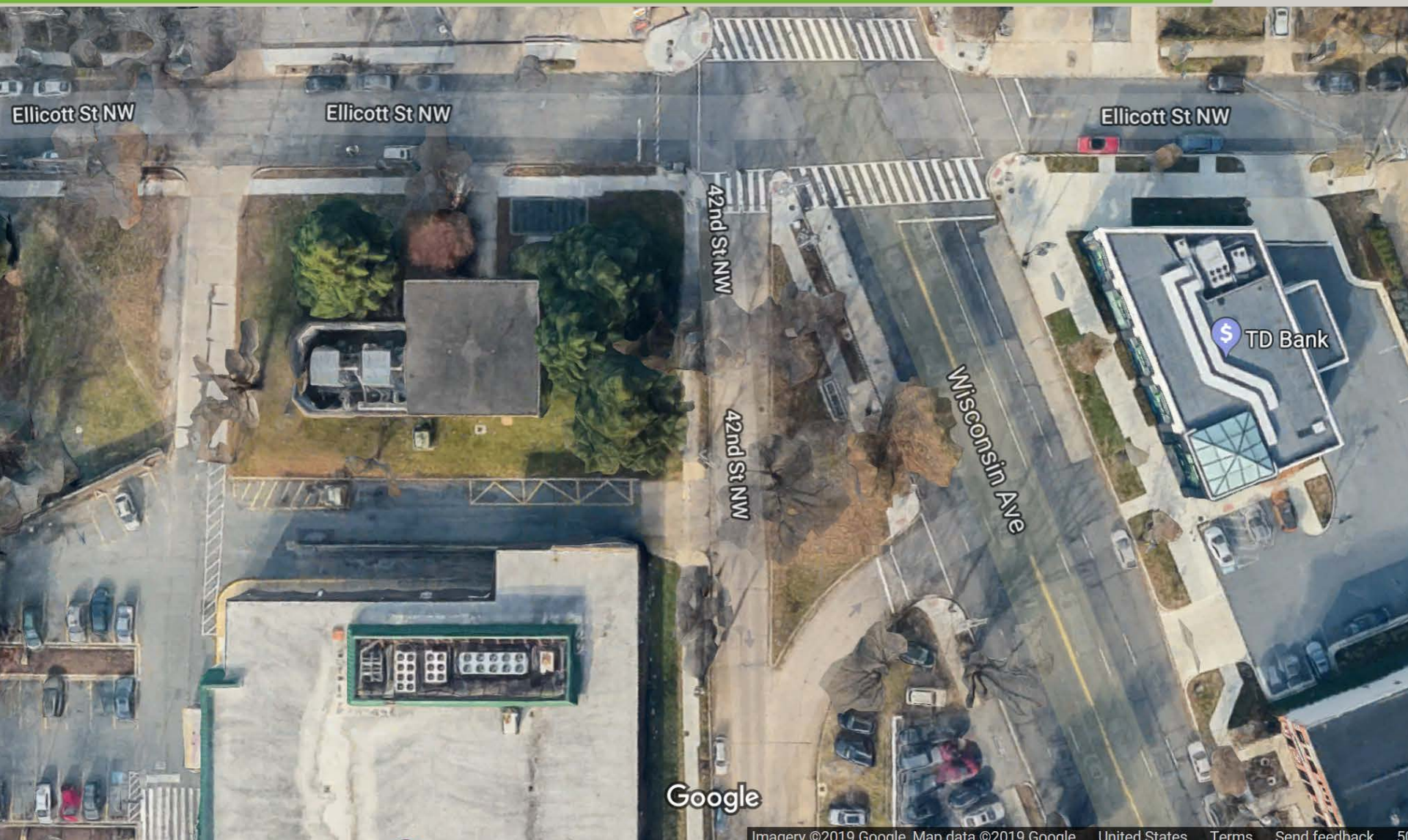
- **Public Space Update**
- **Site Plans**
  - **Site Logistics Plan | Construction Staging Plan**
  - **2020 Site Plan**
- **Project Update – May**
- **Project Timeline**
- **Upcoming Town Hall Meetings**
- **Q&A**

# 42<sup>ND</sup> Street NW & Ellicott Street NW



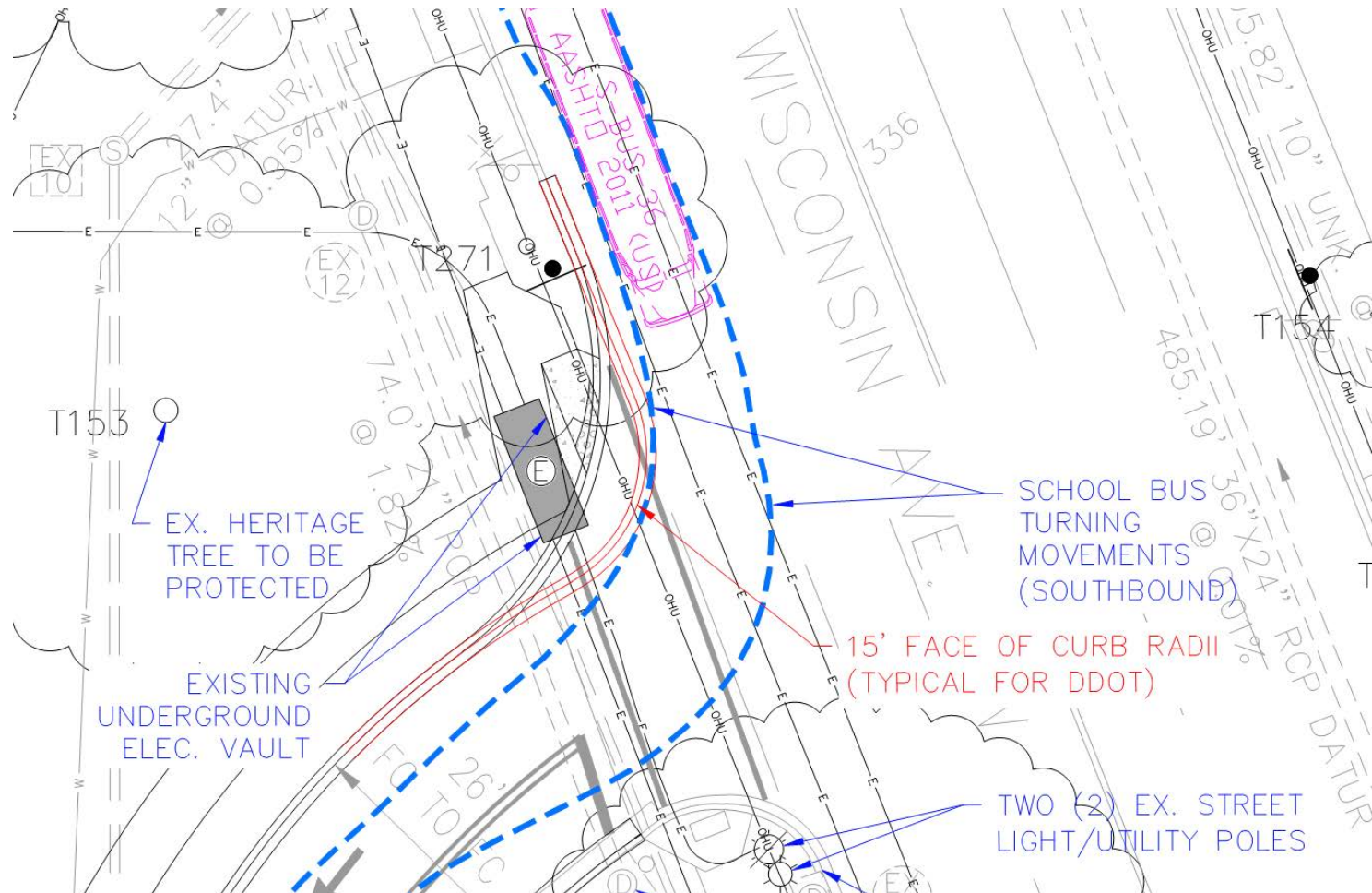


# Aerial View of the “Fish Hook”



# May 2019 ANC Resolution Approved

## Confirmed school bus turning radius from Wisconsin Ave





# May 2019 ANC Resolution Approved

Coordinated park furniture with adjacent parks  
Provided circular painted pattern along the unused road space



Parc Centre Lounge Chairs with Arms & Armless & Ottoman



Parc Centre Tables & Chairs with Arms



2 SHRUBTUB CONICAL  
SCALE: NTS



Central Park Conservancy Recycling System



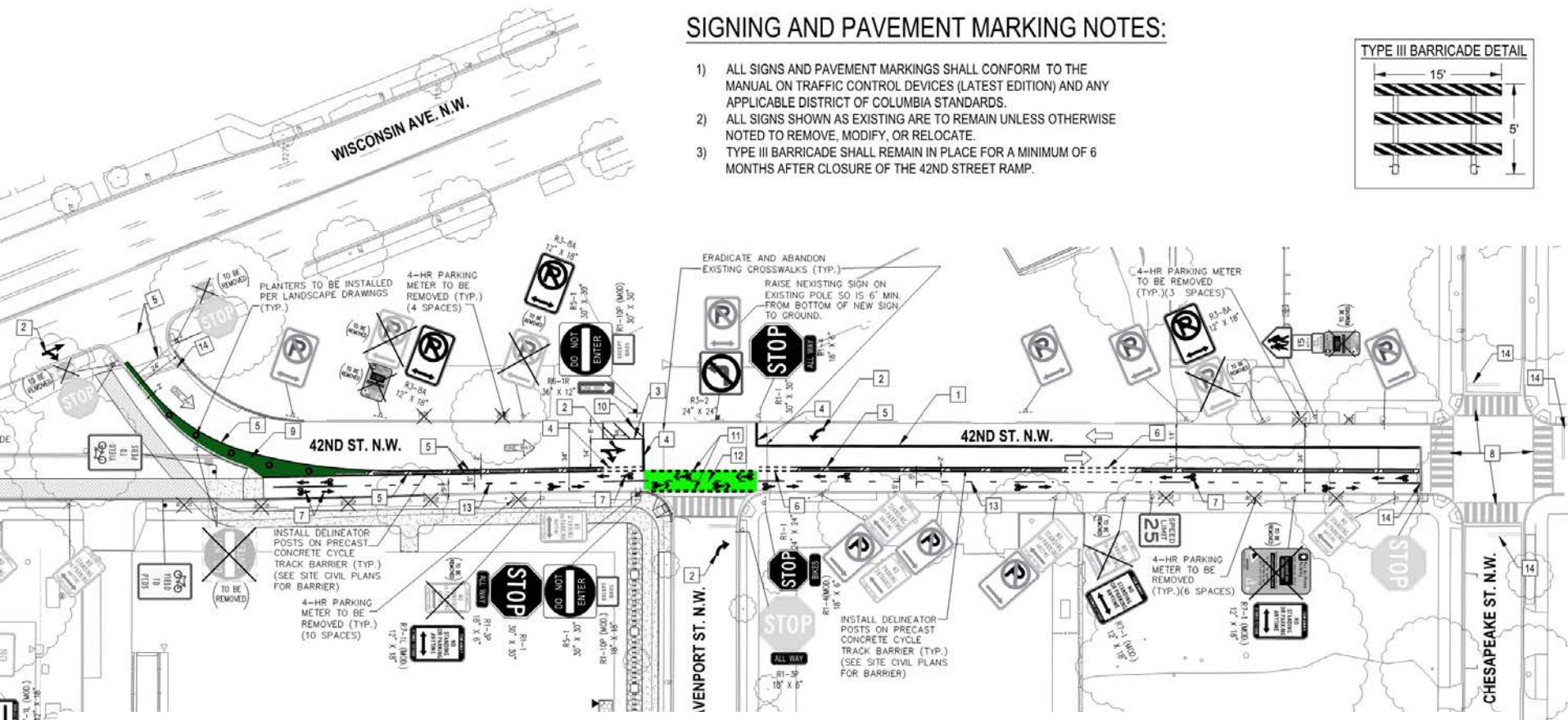
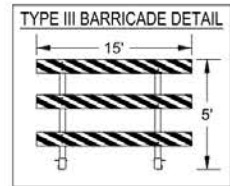
Parc Vue Bench with Back and Arms

Will follow a green color palette for the furniture

# May 2019 ANC Resolution Approved

## SIGNING AND PAVEMENT MARKING NOTES:

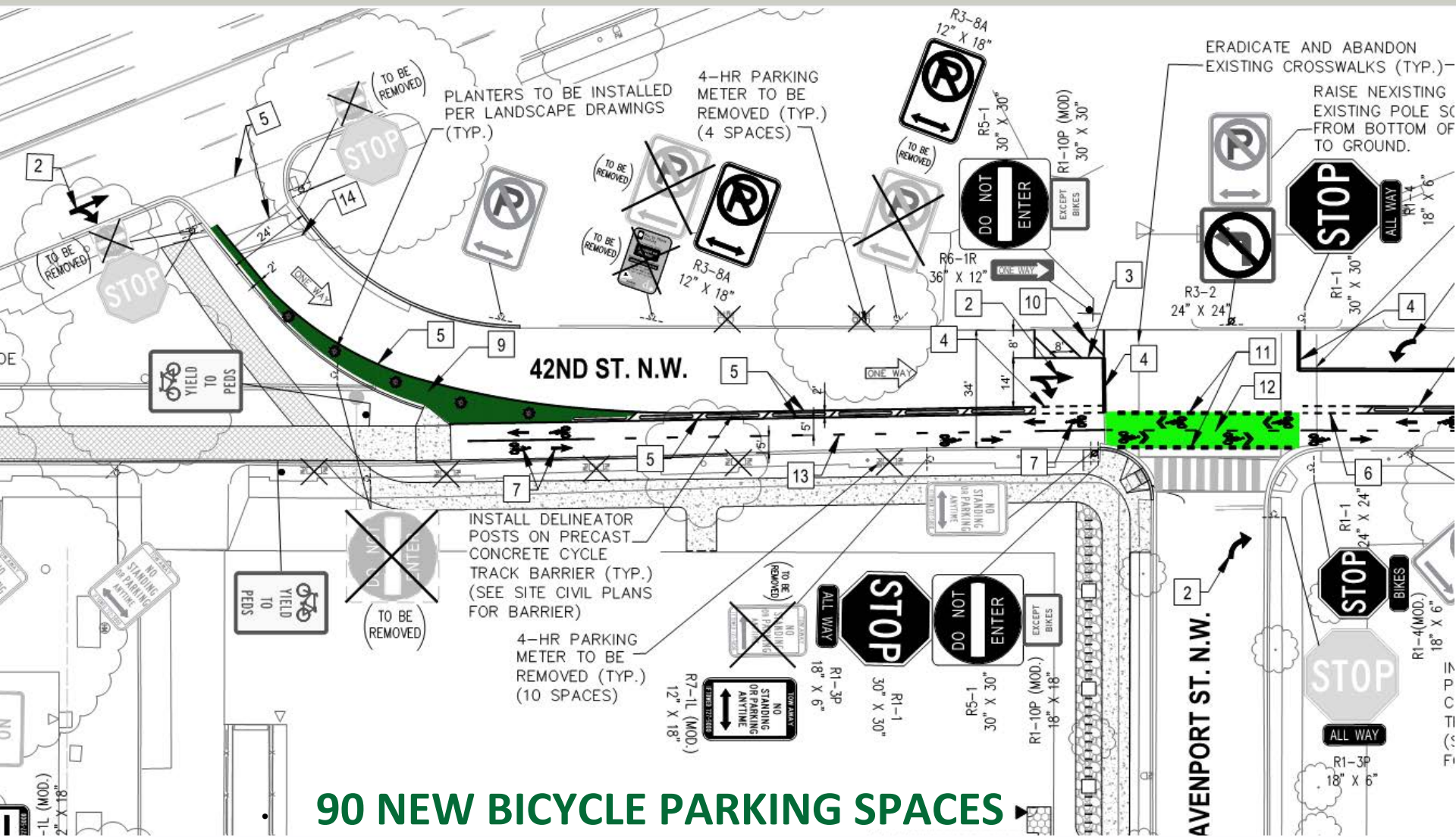
- 1) ALL SIGNS AND PAVEMENT MARKINGS SHALL CONFORM TO THE MANUAL ON TRAFFIC CONTROL DEVICES (LATEST EDITION) AND ANY APPLICABLE DISTRICT OF COLUMBIA STANDARDS.
- 2) ALL SIGNS SHOWN AS EXISTING ARE TO REMAIN UNLESS OTHERWISE NOTED TO REMOVE, MODIFY, OR RELOCATE.
- 3) TYPE III BARRICADE SHALL REMAIN IN PLACE FOR A MINIMUM OF 6 MONTHS AFTER CLOSURE OF THE 42ND STREET RAMP.



Will repaint Chesapeake & 42<sup>nd</sup> St crosswalks and stop bars per DDOT review of intersection



# May 2019 ANC Resolution Approved





# Two-Way Cycle Track Example





# APPENDIX: 07/18/2018 MOU by Wells + Associates

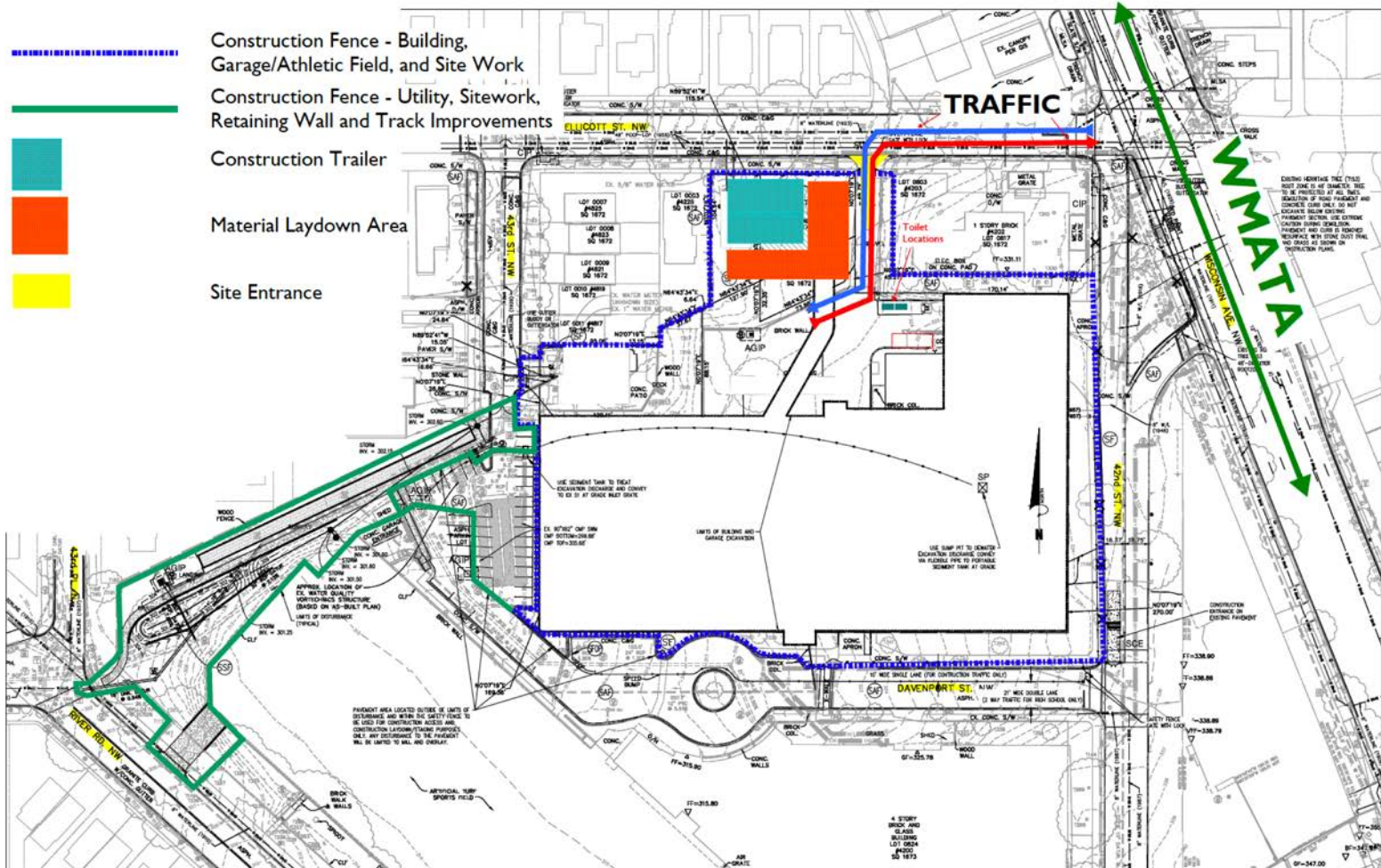
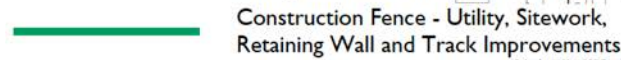
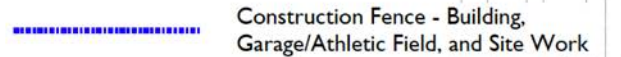
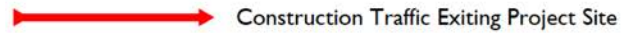
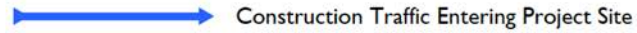


**Figure 1**  
Proposed Conversion of 42nd Street to One-Way and  
Proposed Extension of On-Street Bike Lane





# Site Logistics Plan | Construction Staging Plan





# 2020 Site Plan\*\*

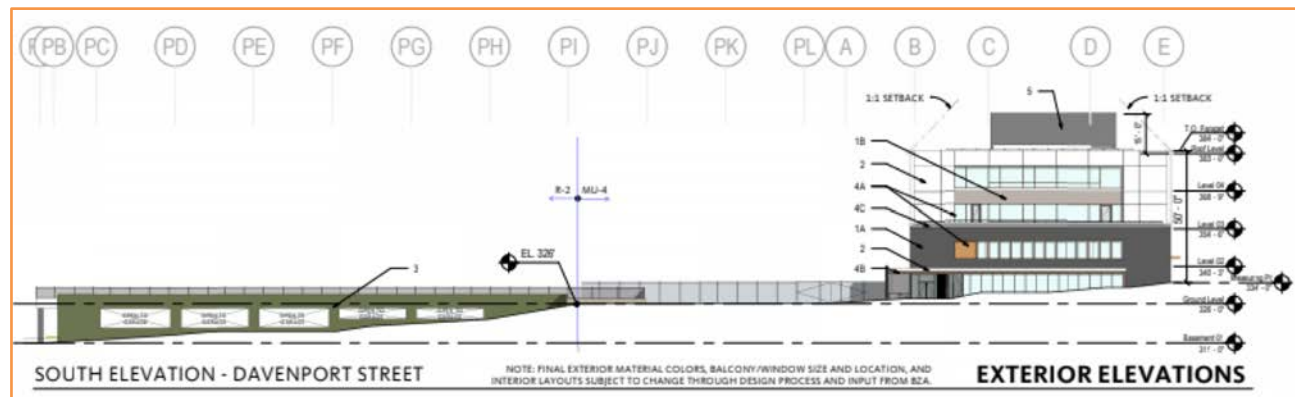
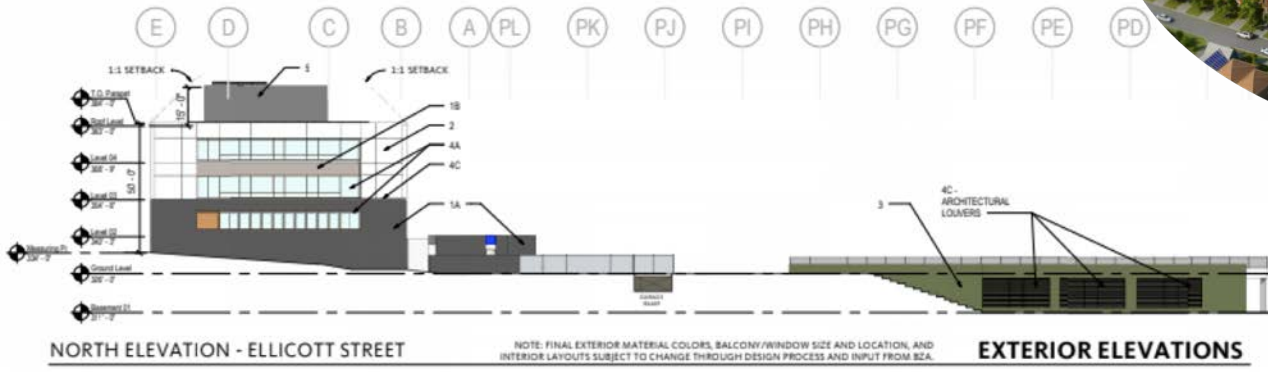




# 2020 Site Plan\*\*



# 2020 Site Plan\*\*

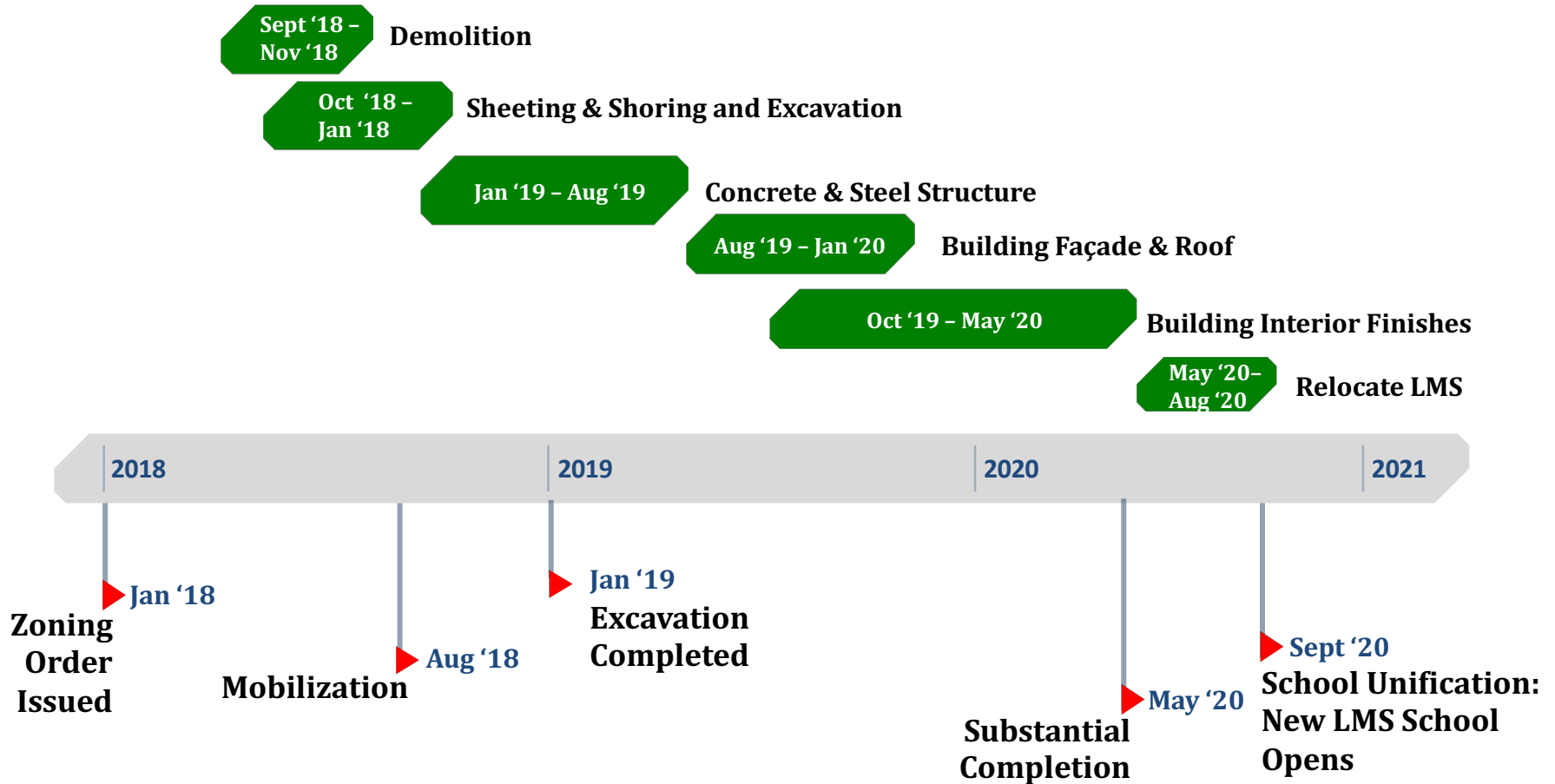




# Project Update – May

- **Erect Formwork for Ground Level Building Slab & Begin Pouring Concrete**
- **Complete B1 Foundations and Slabs for Garage & Building**
- **Pour 75% of Ground Level Sports Field Slab**
- **Continue Building Electrical & Plumbing Rough-In**
- **Begin Erecting the Building's Steel Columns and Beams**
  - Expect loud engine noise and back-up alarms from heavy equipment, concrete trucks, etc. on a regular basis and occasionally dump trucks.
  - We can expect fewer daily dump trucks and an increase in concrete truck traffic flow for the next few months.
  - Expect loud horn noise when the tower crane picks up a load (typically a heavy one) as a safety precaution to notify all on-site of the crane's overhead load position.
  - The hard surfaces on-site are being swept daily to prevent dust from going airborne.

# Project Timeline





# Town Hall Calendar

## Remaining 2018-2019 Town Hall Dates:

- ~~May 2019~~ ~~Wednesday, May 15th @6PM~~
- June 2019                      Wednesday, June 19th @6PM

## 2019-2020 Town Hall Calendar will be updated on the website. There will be no meeting in July.

- August 2019                      Tuesday, August 27th @6PM
- September 2019                      Tuesday, September 24th @6PM
- October 2019                      Tuesday, October 29th @6PM
- November 2019                      Tuesday, November 19th @6PM
- December 2019                      Tuesday, December 17th @6PM
- January 2020                      Tuesday, January 28<sup>th</sup> @6PM

# Q&A

## Next Town Hall:

- Wednesday, June 19<sup>th</sup> @6PM





# Appendix - Construction Management Plan



Gensler



## CONSTRUCTION MANAGEMENT PLAN GEORGETOWN DAY SCHOOL SCHOOL UNIFICATION PROJECT: NEW LOWER MIDDLE SCHOOL

12 SEPTEMBER 2018

### Commitment to Safety

**Safety is a commitment, not a drill.** For us, safety is more than a habit. It's a mindset each of our team members employ on your project, achieving industry recognition for excellence in safety performance. We hold our partners and our subcontractors to equally demanding standards.

**Getting everyone home safely at the end of the day is our highest priority.** We hold everyone accountable on every project for the wellbeing of both our staff and our subcontractors. Through continuing education, jobsite inspections and weekly reviews, we provide the training necessary to ensure compliance across the board.

**Isolate construction from General Public.** Equally important during construction is pedestrian safety. It is important that DAVIS creates an effective barrier enclosing the project site from pedestrian and General Public access. Perimeter safety fencing will be installed at the onset of construction activity, monitored regularly and repaired as necessary. Installation of the perimeter safety fencing provides a physical barrier to protect the General Public, as well as protect on site stored materials. Adequate signage will be installed at construction entrances and along perimeter fencing identifying the enclosed construction area.

### General Information

An established School Unification Project web page will provide stakeholders access to pertinent project information. The web page will include an agenda for scheduled neighborhood meetings, updates from such meetings, and locations to submit inquiries regarding the project. All project-related communication will be distributed to the public via this project web page and should be checked regularly by stakeholders. Any and all concerns or questions should be submitted via the project web page for review and distribution to all stakeholders.

Project Website: [www.gds.org/schoolunification](http://www.gds.org/schoolunification)

#### Georgetown Day School

Chief Financial Officer – Jeffrey Houser

Project Manager – Kristina Lennox

#### DAVIS Construction

Senior Project Manager – Chad Oursler

Senior Superintendent – Todd Fritz

Superintendent – Tim Fedder

#### GreenBench Companies

Vice President – Gary Kressler

Project Manager – Daniel Bonilla

# Appendix - Construction Management Plan

## Schedule + Logistics

### Construction Schedule

The construction of the new Lower Middle School will commence Summer 2018 and conclude for the start of school September 2020. DAVIS is committed to minimizing construction activity, noise and any disruptions through the duration of the project. Noise control is critical as the project site is in close proximity to the adjacent High School and surrounding community homes. As per Department of Consumer and Regulatory Affairs (DCRA) noise regulations, construction activities will occur between the hours of 7:00am and 7:00pm, Monday through Saturday. Any and all vehicles parked on site outside of these times will do so with engines turned off. There will be no idle engines running outside of the project working hours. DAVIS will remain in open communication with the adjacent High School, coordinating quiet construction times to coordinate with periods of testing at the school throughout the school year. DAVIS is mindful of student arrival/departure times and adjacent community morning/evening commute times, and will coordinate material deliveries outside of these times.

### Site Logistics Plan | Construction Staging

The **Site Logistics Plan | Construction Staging Map** is attached for the new Lower Middle School (Exhibit A). As shown, DAVIS will operate within the highlighted area known as the Limits of Disturbance (LOD). Erosion and sediment control measures will be installed in accordance with DCRA approved plans, and perimeter safety fencing installed. Updates to the plan will be uploaded to the project web page as they develop with project progress.

### Jobsite Trailers and Jobsite Restrooms

Areas for construction trailers and material laydown have been identified adjacent to the Site Construction Entrance via Ellicott Street. This location has been determined after analyzing the project site, final building size/location and onsite grading. Jobsite trailers will be centrally located, nearby work areas, for easy worker access.

### Traffic Management

The traffic management plan has two main goals. First, to route construction traffic in such a way that it reduces traffic to residential streets, and second, to allow for separation of construction traffic/activities from the day-to-day traffic/access to the High School by restricting construction traffic along Davenport Street. The construction traffic route to/from the project site is predominantly by way of Wisconsin Avenue and Ellicott Street. The installation of the new garage entrance along River Road, once completed, will also provide additional access to the High School and assist with non-construction-related traffic flow.

### Adjacent Properties and Roadways

**43rd Street** – Construction traffic will access the site via Ellicott Street, not 43rd Street. When demolishing the 4815 43rd Street residence, access will be from within the project boundary and not 43rd Street. Work is scheduled to replace the existing gate/fence separating the 43rd street from the GDS property. During this work activity, additional security fencing will be installed to properly secure the project site.

**Ellicott Street** – Ellicott Street is the main access route to/from the project site. Reference Exhibit A, which identifies the path of travel from Wisconsin Avenue to Ellicott Street to the project site. All construction related traffic will arrive via Wisconsin Avenue, utilizing only the eastern portion of Ellicott

Street, and exit the same. Construction traffic will NOT access the project site via west portion of Ellicott Street.

**42nd Street** – A secondary (temporary) access point will be established from the project site to 42nd street. This temporary access point will only be in operation during the mass excavation for the below grade building and will be closed once excavation operations for the building below grade levels are complete. Pedestrian access along 42nd street will be maintained throughout construction, via existing sidewalk currently between the existing Safeway building and 42nd street.

**Chesapeake Street** – Construction traffic will NOT access the project site via Chesapeake street.

**River Road** – Construction activity along River Road will occur during the creation of the new entrance to the High School garage. In advance of this work, signage and barricades will be installed to notify general public in accordance with approved traffic control.

**43rd Place** – Construction traffic will NOT access the project site via 43rd Place.

### Site Access

The project site boundary will be secure and not accessible by the public. Site access for construction operations will be provided during each established workday and not on an unlimited basis.

## General Jobsite Requirements

### Trash Control + Responsibility

Trash will be the responsibility of all persons on site and will be disposed of daily into dumpsters located on site. DAVIS will enforce a weekly ALL HANDS project cleanup which will assist in cleaning jobsite debris for a clean safe working environment. Workers will patrol the project site perimeter during the daily cleanup, ensuring that any debris and/or trash is cleaned and disposed of properly.

### Rodent Control

As required by DCRA for RAZE of all buildings, Vector Control will be administered, ensuring any rodents within the existing buildings are properly eradicated. During construction operations DAVIS will continue Vector Control as necessary, in addition to standard jobsite housekeeping. All construction debris, and debris from worker lunches will be confined to the designated break areas and identified dumpster locations. Limiting the locations for worker breaks, with debris/trash confined to the identified zone, will assist in keeping the jobsite clean.

### Security + Badging

All persons entering the Project Site are required to display a valid DAVIS hardhat sticker. DAVIS will issue the hard hat sticker to individuals after completion of the Safety Orientation prior to the start of work on their first day. All persons are required to wear issued DAVIS hardhat sticker and visible at ALL times.

### Tobacco Use

DAVIS has instituted a zero-tolerance tobacco-free policy on this Project Site. This policy bans tobacco use on the Project Site, Project Entrances and perimeter of the site. Any individuals found in violation of this policy will be escorted from the Project Site for the day and notification will be issued to their employer.



# Appendix - Construction Management Plan

## Schedule + Logistics

### Construction Schedule

The construction of the new Lower Middle School will commence Summer 2018 and conclude for the

start of  
disrupti  
proximi  
Consum  
the hour  
of these  
project  
coordin  
school y  
morning

Site Lo  
The Site  
(Exhibit  
Disturb  
approve  
project

Jobsite  
Areas fo  
Constru  
site, fina  
areas, fo

Traffic  
The traf  
reduces  
from the  
Street.  
Avenue  
comple  
related

## Schedule + Logistics

### Construction Schedule

The construction of the new Lower Middle School will commence Summer 2018 and conclude for the start of school September 2020. DAVIS is committed to minimizing construction activity, noise and any disruptions through the duration of the project. Noise control is critical as the project site is in close proximity to the adjacent High School and surrounding community homes. As per Department of Consumer and Regulatory Affairs (DCRA) noise regulations, construction activities will occur between the hours of 7:00am and 7:00pm, Monday through Saturday. Any and all vehicles parked on site outside of these times will do so with engines turned off. There will be no idle engines running outside of the project working hours. DAVIS will remain in open communication with the adjacent High School, coordinating quiet construction times to coordinate with periods of testing at the school throughout the school year. DAVIS is mindful of student arrival/departure times and adjacent community morning/evening commute times, and will coordinate material deliveries outside of these times.

### Adjacent Properties and Roadways

43rd Street – Construction traffic will access the site via Ellicott Street, not 43rd Street. When demolishing the 4815 43rd Street residence, access will be from within the project boundary and not 43rd Street. Work is scheduled to replace the existing gate/fence separating the 43rd street from the GDS property. During this work activity, additional security fencing will be installed to properly secure the project site.

Ellicott Street – Ellicott Street is the main access route to/from the project site. Reference Exhibit A, which identifies the path of travel from Wisconsin Avenue to Ellicott Street to the project site. All construction related traffic will arrive via Wisconsin Avenue, utilizing only the eastern portion of Ellicott

Street, and exit the same. Construction traffic will NOT access the project site via west portion of Ellicott Street.

42nd Street – A secondary (temporary) access point will be established from the project site to 42nd

the below  
is are  
existing

reet.

y entrance  
otify

ruccion

ers located  
jobsite  
uring the

y any  
DAVIS will  
ruccion  
ntified  
e identified

All persons entering the Project Site are required to display a valid DAVIS hardhat sticker. DAVIS will issue the hard hat sticker to individuals after completion of the Safety Orientation prior to the start of work on their first day. All persons are required to wear issued DAVIS hardhat sticker and visible at ALL times.

### Tobacco Use

DAVIS has instituted a zero-tolerance tobacco-free policy on this Project Site. This policy bans tobacco use on the Project Site, Project Entrances and perimeter of the site. Any individuals found in violation of this policy will be escorted from the Project Site for the day and notification will be issued to their employer.

# Appendix - Construction Management Plan

## Commitment to Safety

**Safety is a commitment, not a drill.** For us, safety is more than a habit. It's a mindset each of our team members employ on your project, achieving industry recognition for excellence in safety performance. We hold our partners and our subcontractors to equally demanding standards.

**Getting everyone home safely at the end of the day is our highest priority.** We hold everyone accountable on every project for the wellbeing of both our staff and our subcontractors. Through continuing education, jobsite inspections and weekly reviews, we provide the training necessary to ensure compliance across the board.

**Isolate construction from General Public.** Equally important during construction is pedestrian safety. It is important that DAVIS creates an effective barrier enclosing the project site from pedestrian and General Public access. Perimeter safety fencing will be installed at the onset of construction activity, monitored regularly and repaired as necessary. Installation of the perimeter safety fencing provides a physical barrier to protect the General Public, as well as protect on site stored materials. Adequate signage will be installed at construction entrances and along perimeter fencing identifying the enclosed construction area.

### Commitment to Safety

Safety is a commitment, not a drill. For us, safety is more than a habit. It's a mindset each of our team members employ on your project, achieving industry recognition for excellence in safety performance. We hold our partners and our subcontractors to equally demanding standards.

We hold everyone accountable on every project for the wellbeing of both our staff and our subcontractors. Through continuing education, jobsite inspections and weekly reviews, we provide the training necessary to ensure compliance across the board.

Equally important during construction is pedestrian safety. It is important that DAVIS creates an effective barrier enclosing the project site from pedestrian and General Public access. Perimeter safety fencing will be installed at the onset of construction activity, monitored regularly and repaired as necessary. Installation of the perimeter safety fencing provides a physical barrier to protect the General Public, as well as protect on site stored materials. Adequate signage will be installed at construction entrances and along perimeter fencing identifying the enclosed construction area.

to pertinent project updates from the project web



CONSTRUCTION MANAGEMENT PLAN  
**GEORGETOWN DAY SCHOOL  
SCHOOL UNIFICATION PROJECT:  
NEW LOWER MIDDLE SCHOOL**

12 JULY 2018

Senior Superintendent – Todd Fritz

Superintendent – Tim Fedder

JFW Project Management

President – James Wilson

Project Manager – Janice Calomiris

Construction Management Plan  
GDS School Unification Project: New Lower Middle School

3



# Appendix - Construction Management Plan

## Schedule + Logistics

### Construction Schedule

The construction of the new Lower Middle School will commence Summer 2018 and conclude for the start of school September 2020. DAVIS is committed to minimizing construction activity, noise and any disruptions through the duration of the project. Noise control is critical as the project site is in close proximity to the adjacent High School and surrounding community homes. As per Department of Consumer and Regulatory Affairs (DCRA) noise regulations, construction activities will occur between the hours of 7:00am and 7:00pm, Monday through Saturday. Any and all vehicles parked on site outside of these times will do so with engines turned off. There will be no idle engines running outside of the project working hours. DAVIS will remain in open communication with the adjacent High School.

Street, and exit the same. Construction traffic will NOT access the project site via west portion of Ellicott Street.

42nd Street – A secondary (temporary) access point will be established from the project site to 42nd street. This temporary access point will only be in operation during the mass excavation for the below grade building and will be closed once excavation operations for the building below grade levels are complete. Pedestrian access along 42nd street will be maintained throughout construction, via existing sidewalk currently between the existing Safeway building and 42nd street.

Chesapeake Street – Construction traffic will NOT access the project site via Chesapeake street.

River Road – Construction activity along River Road will occur during the creation of the new entrance

## Site Logistics Plan | Construction Staging

The **Site Logistics Plan | Construction Staging Map** is attached for the new Lower Middle School (Exhibit A). As shown, DAVIS will operate within the highlighted area known as the Limits of Disturbance (LOD). Erosion and sediment control measures will be installed in accordance with DCRA approved plans, and perimeter safety fencing installed. Updates to the plan will be uploaded to the project web page as they develop with project progress.

The traffic management plan has two main goals. First, to route construction traffic in such a way that it reduces traffic to residential streets, and second, allowing for separation of construction traffic/activities from the day-to-day traffic/access to the High School by restricting construction traffic along Davenport Street. The construction traffic route to/from the project site is predominantly by way of Wisconsin Avenue and Ellicott Street. The installation of the new garage entrance along River Road, once completed, will also provide additional access to the High School and assist with non-construction-related traffic flow.

### Adjacent Properties and Roadways

43rd Street – Construction traffic will access the site via Ellicott Street, not 43rd Street. When demolishing the 4815 43rd Street residence, access will be from within the project boundary and not 43rd Street. Work is scheduled to replace the existing gate/fence separating the 43rd street from the GDS property. During this work activity, additional security fencing will be installed to properly secure the project site.

Ellicott Street – Ellicott Street is the main access route to/from the project site. Reference Exhibit A, which identifies the path of travel from Wisconsin Avenue to Ellicott Street to the project site. All construction related traffic will arrive via Wisconsin Avenue, utilizing only the eastern portion of Ellicott

rodents within the existing buildings are properly eradicated. During construction operations DAVIS will continue Vector Control as necessary, in addition to standard jobsite housekeeping. All construction debris, and debris from worker lunches will be confined to the designated break areas and identified dumpster locations. Limiting the locations for worker breaks, with debris/trash confined to the identified zone, will assist in keeping the jobsite clean.

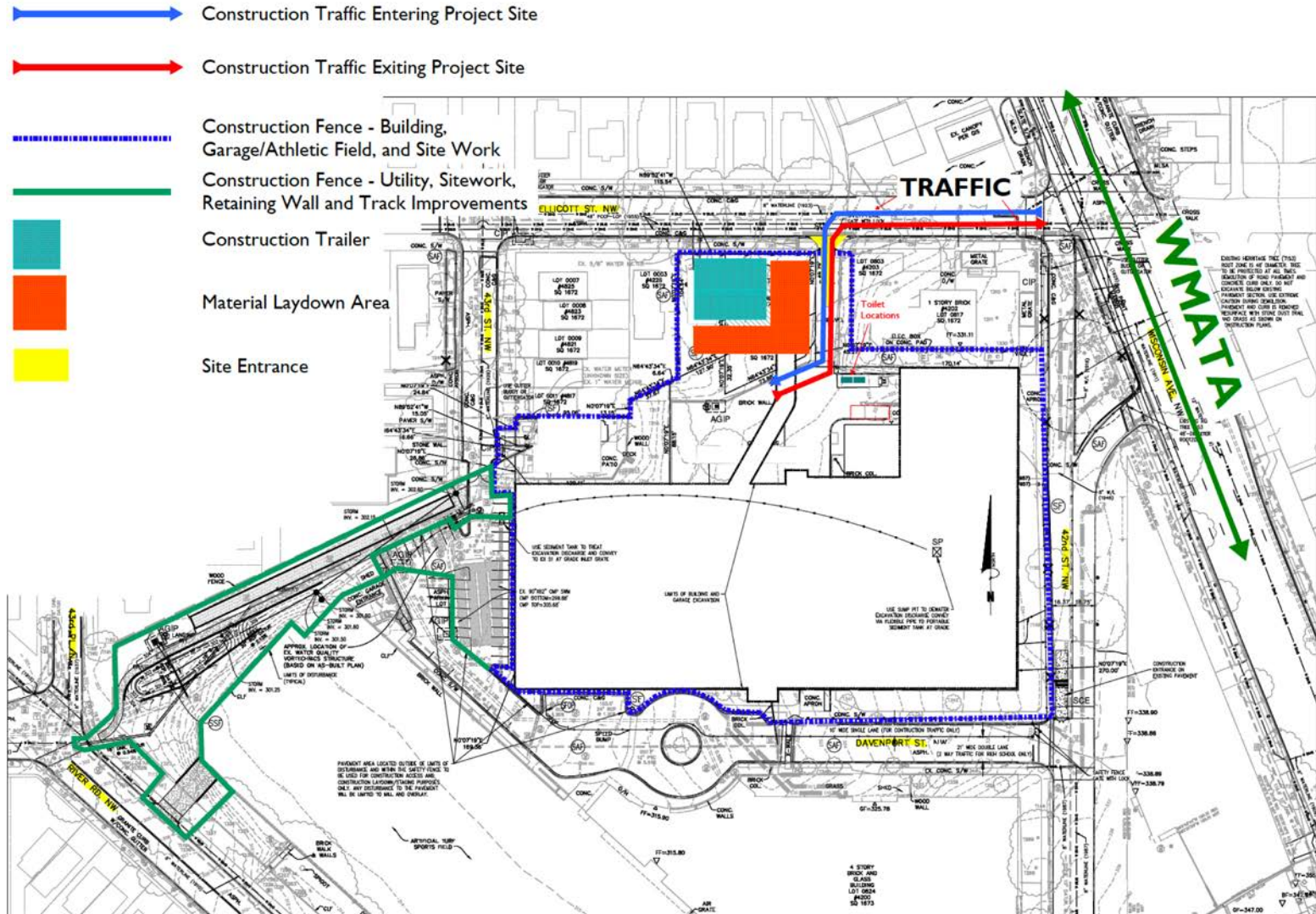
### Security + Badging

All persons entering the Project Site are required to display a valid DAVIS hardhat sticker. DAVIS will issue the hard hat sticker to individuals after completion of the Safety Orientation prior to the start of work on their first day. All persons are required to wear issued DAVIS hardhat sticker and visible at ALL times.

### Tobacco Use

DAVIS has instituted a zero-tolerance tobacco-free policy on this Project Site. This policy bans tobacco use on the Project Site, Project Entrances and perimeter of the site. Any individuals found in violation of this policy will be escorted from the Project Site for the day and notification will be issued to their employer.

## Appendix - Site Logistics Plan | Construction Staging Plan





# Appendix - Construction Management Plan

## Schedule + Logistics

### Construction Schedule

The construction of the new Lower Middle School will commence Summer 2018 and conclude for the start of school September 2020. DAVIS is committed to minimizing construction activity, noise and any disruptions through the duration of the project. Noise control is critical as the project site is in close proximity to the adjacent High School and surrounding community homes. As per Department of Consumer and Regulatory Affairs (DCRA) noise regulations, construction activities will occur between the hours of 7:00am and 7:00pm, Monday through Saturday. Any and all vehicles parked on site outside of these times will do so with engines turned off. There will be no idle engines running outside of the project working hours. DAVIS will remain in open communication with the adjacent High School, coordinating quiet construction times to coordinate with periods of testing at the school throughout the

Street, and exit the same. Construction traffic will NOT access the project site via west portion of Ellicott Street.

42nd Street – A secondary (temporary) access point will be established from the project site to 42nd street. This temporary access point will only be in operation during the mass excavation for the below grade building and will be closed once excavation operations for the building below grade levels are complete. Pedestrian access along 42nd street will be maintained throughout construction, via existing sidewalk currently between the existing Safeway building and 42nd street.

Chesapeake Street – Construction traffic will NOT access the project site via Chesapeake street.

River Road – Construction activity along River Road will occur during the creation of the new entrance to the High School garage. In advance of this work, signage and barricades will be installed to notify

## Jobsite Trailers and Jobsite Restrooms

Areas for construction trailers and material laydown have been identified adjacent to the Site Construction Entrance via Ellicott Street. This location has been determined after analyzing the project site, final building size/location and onsite grading. Jobsite trailers will be centrally located, nearby work areas, for easy worker access.

### Traffic Management

The traffic management plan has two main goals. First, to route construction traffic in such a way that it reduces traffic to residential streets, and second, allowing for separation of construction traffic/activities from the day-to-day traffic/access to the High School by restricting construction traffic along Davenport Street. The construction traffic route to/from the project site is predominantly by way of Wisconsin Avenue and Ellicott Street. The installation of the new garage entrance along River Road, once completed, will also provide additional access to the High School and assist with non-construction-related traffic flow.

### Adjacent Properties and Roadways

43rd Street – Construction traffic will access the site via Ellicott Street, not 43rd Street. When demolishing the 4815 43rd Street residence, access will be from within the project boundary and not 43rd Street. Work is scheduled to replace the existing gate/fence separating the 43rd street from the GDS property. During this work activity, additional security fencing will be installed to properly secure the project site.

Ellicott Street – Ellicott Street is the main access route to/from the project site. Reference Exhibit A, which identifies the path of travel from Wisconsin Avenue to Ellicott Street to the project site. All construction related traffic will arrive via Wisconsin Avenue, utilizing only the eastern portion of Ellicott

### Rodent Control

As required by DCRA for RAZE of all buildings, Vector Control will be administered, ensuring any rodents within the existing buildings are properly eradicated. During construction operations DAVIS will continue Vector Control as necessary, in addition to standard jobsite housekeeping. All construction debris, and debris from worker lunches will be confined to the designated break areas and identified dumpster locations. Limiting the locations for worker breaks, with debris/trash confined to the identified zone, will assist in keeping the jobsite clean.

### Security + Badging

All persons entering the Project Site are required to display a valid DAVIS hardhat sticker. DAVIS will issue the hard hat sticker to individuals after completion of the Safety Orientation prior to the start of work on their first day. All persons are required to wear issued DAVIS hardhat sticker and visible at ALL times.

### Tobacco Use

DAVIS has instituted a zero-tolerance tobacco-free policy on this Project Site. This policy bans tobacco use on the Project Site, Project Entrances and perimeter of the site. Any individuals found in violation of this policy will be escorted from the Project Site for the day and notification will be issued to their employer.

# Appendix - Construction Management Plan

## Schedule + Logistics

### Construction Schedule

The construction of the new Lower Middle School will commence Summer 2018 and conclude for the start of school September 2020. DAVIS is committed to minimizing construction activity, noise and any disruptions through the duration of the project. Noise control is critical as the project site is in close proximity to the adjacent High School and surrounding community homes. As per Department of Consumer and Regulatory Affairs (DCRA) noise regulations, construction activities will occur between the hours of 7:00am and 7:00pm, Monday through Saturday. All work will be conducted on-site outside

Street, and exit the same. Construction traffic will NOT access the project site via west portion of Ellicott Street.

42nd Street – A secondary (temporary) access point will be established from the project site to 42nd street. This temporary access point will only be in operation during the mass excavation for the below grade building and will be closed once excavation operations for the building below grade levels are complete. Pedestrian access along 42nd street will be maintained throughout construction, via existing sidewalk currently between the existing Safeway building and 42nd street.

## Traffic Management

The traffic management plan has two main goals. First, to route construction traffic in such a way that it reduces traffic to residential streets, and second, to allow for separation of construction traffic/activities from the day-to-day traffic/access to the High School by restricting construction traffic along Davenport Street. The construction traffic route to/from the project site is predominantly by way of Wisconsin Avenue and Ellicott Street. The installation of the new garage entrance along River Road, once completed, will also provide additional access to the High School and assist with non-construction-related traffic flow.

Street. The construction traffic route to/from the project site is predominantly by way of Wisconsin Avenue and Ellicott Street. The installation of the new garage entrance along River Road, once completed, will also provide additional access to the High School and assist with non-construction-related traffic flow.

### Adjacent Properties and Roadways

43rd Street – Construction traffic will access the site via Ellicott Street, not 43rd Street. When demolishing the 4815 43rd Street residence, access will be from within the project boundary and not 43rd Street. Work is scheduled to replace the existing gate/fence separating the 43rd street from the GDS property. During this work activity, additional security fencing will be installed to properly secure the project site.

Ellicott Street – Ellicott Street is the main access route to/from the project site. Reference Exhibit A, which identifies the path of travel from Wisconsin Avenue to Ellicott Street to the project site. All construction related traffic will arrive via Wisconsin Avenue, utilizing only the eastern portion of Ellicott

debris, and debris from worker lunches will be confined to the designated break areas and identified dumpster locations. Limiting the locations for worker breaks, with debris/trash confined to the identified zone, will assist in keeping the jobsite clean.

### Security + Badging

All persons entering the Project Site are required to display a valid DAVIS hardhat sticker. DAVIS will issue the hard hat sticker to individuals after completion of the Safety Orientation prior to the start of work on their first day. All persons are required to wear issued DAVIS hardhat sticker and visible at ALL times.

### Tobacco Use

DAVIS has instituted a zero-tolerance tobacco-free policy on this Project Site. This policy bans tobacco use on the Project Site, Project Entrances and perimeter of the site. Any individuals found in violation of this policy will be escorted from the Project Site for the day and notification will be issued to their employer.



# Appendix - Construction Management Plan

## Schedule + Logistics

### Construction Schedule

The construction of the new start of school September 2020 disruptions through the duration of the construction. The proximity to the adjacent High Consumer and Regulatory Affairs the hours of 7:00am and 7:00pm of these times will do so with project working hours. DAVIS is coordinating quiet construction school year. DAVIS is mindful of morning/evening commute times.

### Site Logistics Plan

The Site Logistics Plan I C (Exhibit A). As shown, DAVIS Disturbance (LOD). Erosion approved plans, and perimeter project web page as they develop.

### Jobsite Trailers and Jobs

Areas for construction trailers. Construction Entrance via Ellicott Street, final building size/location areas, for easy worker access.

### Traffic Management

The traffic management plan reduces traffic to residential from the day-to-day traffic on Ellicott Street. The construction traffic Avenue and Ellicott Street. Traffic completed, will also provide related traffic flow.

### Adjacent Properties and

43rd Street – Construction demolishing the 4815 43rd Street. Work is scheduled to property. During this work a project site.

### Ellicott Street – Ellicott Street

which identifies the path of construction related traffic will

## Adjacent Properties and Roadways

**43rd Street** – Construction traffic will access the site via Ellicott Street, not 43rd Street. When demolishing the 4815 43rd Street residence, access will be from within the project boundary and not 43rd Street. Work is scheduled to replace the existing gate/fence separating the 43rd street from the GDS property. During this work activity, additional security fencing will be installed to properly secure the project site.

**Ellicott Street** – Ellicott Street is the main access route to/from the project site. Reference Exhibit A, which identifies the path of travel from Wisconsin Avenue to Ellicott Street to the project site. All construction related traffic will arrive via Wisconsin Avenue, utilizing only the eastern portion of Ellicott

Street, and exit the same. Construction traffic will NOT access the project site via west portion of Ellicott Street.

**42nd Street** – A secondary (temporary) access point will be established from the project site to 42nd street. This temporary access point will only be in operation during the mass excavation for the below grade building and will be closed once excavation operations for the building below grade levels are complete. Pedestrian access along 42nd street will be maintained throughout construction, via existing sidewalk currently between the existing Safeway building and 42nd street.

**Chesapeake Street** – Construction traffic will NOT access the project site via Chesapeake street.

**River Road** – Construction activity along River Road will occur during the creation of the new entrance to the High School garage. In advance of this work, signage and barricades will be installed to notify general public in accordance with approved traffic control.

**43rd Place** – Construction traffic will NOT access the project site via 43rd Place.

ect site via west portion of

from the project site to 42nd mass excavation for the below grade levels are but construction, via existing

ite via Chesapeake street.

the creation of the new entrance s will be installed to notify

rd Place.

Site access for construction in unlimited basis.

of daily into dumpsters located will assist in cleaning jobsite ect site perimeter during the d of property.

ministered, ensuring any truction operations DAVIS will sekeeping. All construction l break areas and identified trash confined to the identified

s hardhat sticker. DAVIS will entation prior to the start of rldhat sticker and visible at

Site. This policy bans tobacco individuals found in violation of on will be issued to their

# Appendix - Construction Management Plan

## Schedule + Logistics

### Construction Schedule

The construction of the new Lower Middle School will commence Summer 2018 and conclude for the start of school September 2020. DAVIS is committed to minimizing construction activity, noise and any disruptions through the duration of the project. Noise control is critical as the project site is in close proximity to the adjacent High School and surrounding community homes. As per Department of Consumer and Regulatory Affairs (DCRA) noise regulations, construction activities will occur between the hours of 7:00am and 7:00pm, Monday through Saturday. Any and all vehicles parked on site outside of these times will do so with engines turned off. There will be no idle engines running outside of the project working hours. DAVIS will remain in open communication with the adjacent High School, coordinating quiet construction times to coordinate with periods of testing at the school throughout the school year. DAVIS is mindful of student arrival/departure times and adjacent community morning/evening commute times, and will coordinate material deliveries outside of these times.

Street, and exit the same. Construction traffic will NOT access the project site via west portion of Ellicott Street.

42nd Street – A secondary (temporary) access point will be established from the project site to 42nd street. This temporary access point will only be in operation during the mass excavation for the below grade building and will be closed once excavation operations for the building below grade levels are complete. Pedestrian access along 42nd street will be maintained throughout construction, via existing sidewalk currently between the existing Safeway building and 42nd street.

Chesapeake Street – Construction traffic will NOT access the project site via Chesapeake street.

River Road – Construction activity along River Road will occur during the creation of the new entrance to the High School garage. In advance of this work, signage and barricades will be installed to notify general public in accordance with approved traffic control.

43rd Place – Construction traffic will NOT access the project site via 43rd Place.

## Site Access

**The project site boundary will be secure and not accessible by the public. Site access for construction operations will be provided during each established workday and not on an unlimited basis.**

site, final building size/location and onsite grading. Jobsite trailers will be centrally located, nearby work areas, for easy worker access.

### Traffic Management

The traffic management plan has two main goals. First, to route construction traffic in such a way that it reduces traffic to residential streets, and second, allowing for separation of construction traffic/activities from the day-to-day traffic/access to the High School by restricting construction traffic along Davenport Street. The construction traffic route to/from the project site is predominantly by way of Wisconsin Avenue and Ellicott Street. The installation of the new garage entrance along River Road, once completed, will also provide additional access to the High School and assist with non-construction-related traffic flow.

### Adjacent Properties and Roadways

43rd Street – Construction traffic will access the site via Ellicott Street, not 43rd Street. When demolishing the 4815 43rd Street residence, access will be from within the project boundary and not 43rd Street. Work is scheduled to replace the existing gate/fence separating the 43rd street from the GDS property. During this work activity, additional security fencing will be installed to properly secure the project site.

Ellicott Street – Ellicott Street is the main access route to/from the project site. Reference Exhibit A, which identifies the path of travel from Wisconsin Avenue to Ellicott Street to the project site. All construction related traffic will arrive via Wisconsin Avenue, utilizing only the eastern portion of Ellicott

debris for a clean safe working environment. Workers will patrol the project site perimeter during the daily cleanup, ensuring that any debris and/or trash is cleaned and disposed of properly.

### Rodent Control

As required by DCRA for RAZE of all buildings, Vector Control will be administered, ensuring any rodents within the existing buildings are properly eradicated. During construction operations DAVIS will continue Vector Control as necessary, in addition to standard jobsite housekeeping. All construction debris, and debris from worker lunches will be confined to the designated break areas and identified dumpster locations. Limiting the locations for worker breaks, with debris/trash confined to the identified zone, will assist in keeping the jobsite clean.

### Security + Badging

All persons entering the Project Site are required to display a valid DAVIS hardhat sticker. DAVIS will issue the hard hat sticker to individuals after completion of the Safety Orientation prior to the start of work on their first day. All persons are required to wear issued DAVIS hardhat sticker and visible at ALL times.

### Tobacco Use

DAVIS has instituted a zero-tolerance tobacco-free policy on this Project Site. This policy bans tobacco use on the Project Site, Project Entrances and perimeter of the site. Any individuals found in violation of this policy will be escorted from the Project Site for the day and notification will be issued to their employer.



# Appendix - Construction Management Plan

## Schedule + Logistics

### Construction Schedule

The construction of the new Lower Middle School will commence Summer 2018 and conclude for the start of school September 2020. DAVIS is committed to minimizing construction activity, noise and any disruptions through the duration of the project. Noise control is critical as the project site is in close proximity to the adjacent High School and surrounding community homes. As per Department of Consumer and Regulatory Affairs (DCRA) noise regulations, construction activities will occur between the hours of 7:00am and 7:00pm, Monday through Saturday. Any and all vehicles parked on site outside of these times will do so with engines turned off. There will be no idle engines running outside of the project working hours. DAVIS will remain in open communication with the adjacent High School,

Street, and exit the same. Construction traffic will NOT access the project site via west portion of Ellicott Street.

42nd Street – A secondary (temporary) access point will be established from the project site to 42nd street. This temporary access point will only be in operation during the mass excavation for the below grade building and will be closed once excavation operations for the building below grade levels are complete. Pedestrian access along 42nd street will be maintained throughout construction, via existing sidewalk currently between the existing Safeway building and 42nd street.

Chesapeake Street – Construction traffic will NOT access the project site via Chesapeake street.

River Road – Construction activity along River Road will occur during the creation of the new entrance

## General Jobsite Requirements

### Trash Control + Responsibility

**Trash will be the responsibility of all persons on site and will be disposed of daily into dumpsters located on site. DAVIS will enforce a weekly ALL HANDS project cleanup which will assist in cleaning jobsite debris for a clean safe working environment. Workers will patrol the project site perimeter during the daily cleanup, ensuring that any debris and/or trash is cleaned and disposed of properly.**

The traffic management plan has two main goals. First, to route construction traffic in such a way that it reduces traffic to residential streets, and second, allowing for separation of construction traffic/activities from the day-to-day traffic/access to the High School by restricting construction traffic along Davenport Street. The construction traffic route to/from the project site is predominantly by way of Wisconsin Avenue and Ellicott Street. The installation of the new garage entrance along River Road, once completed, will also provide additional access to the High School and assist with non-construction-related traffic flow.

### Adjacent Properties and Roadways

43rd Street – Construction traffic will access the site via Ellicott Street, not 43rd Street. When demolishing the 4815 43rd Street residence, access will be from within the project boundary and not 43rd Street. Work is scheduled to replace the existing gate/fence separating the 43rd street from the GDS property. During this work activity, additional security fencing will be installed to properly secure the project site.

Ellicott Street – Ellicott Street is the main access route to/from the project site. Reference Exhibit A, which identifies the path of travel from Wisconsin Avenue to Ellicott Street to the project site. All construction related traffic will arrive via Wisconsin Avenue, utilizing only the eastern portion of Ellicott

As required by DCRA for PACE of all buildings, vector control will be administered, ensuring any rodents within the existing buildings are properly eradicated. During construction operations DAVIS will continue Vector Control as necessary, in addition to standard jobsite housekeeping. All construction debris, and debris from worker lunches will be confined to the designated break areas and identified dumpster locations. Limiting the locations for worker breaks, with debris/trash confined to the identified zone, will assist in keeping the jobsite clean.

### Security + Badging

All persons entering the Project Site are required to display a valid DAVIS hardhat sticker. DAVIS will issue the hard hat sticker to individuals after completion of the Safety Orientation prior to the start of work on their first day. All persons are required to wear issued DAVIS hardhat sticker and visible at ALL times.

### Tobacco Use

DAVIS has instituted a zero-tolerance tobacco-free policy on this Project Site. This policy bans tobacco use on the Project Site, Project Entrances and perimeter of the site. Any individuals found in violation of this policy will be escorted from the Project Site for the day and notification will be issued to their employer.

# Appendix - Construction Management Plan

## Schedule + Logistics

### Construction Schedule

The construction of the new Lower Middle School will commence Summer 2018 and conclude for the start of school September 2020. DAVIS is committed to minimizing construction activity, noise and any disruptions through the duration of the project. Noise control is critical as the project site is in close proximity to the adjacent High School and surrounding community homes. As per Department of Consumer and Regulatory Affairs (DCRA) noise regulations, construction activities will occur between the hours of 7:00am and 7:00pm, Monday through Saturday. Any and all vehicles parked on site outside of these times will do so with engines turned off. There will be no idle engines running outside of the project working hours. DAVIS will remain in open communication with the adjacent High School.

Street, and exit the same. Construction traffic will NOT access the project site via west portion of Ellicott Street.

42nd Street – A secondary (temporary) access point will be established from the project site to 42nd street. This temporary access point will only be in operation during the mass excavation for the below grade building and will be closed once excavation operations for the building below grade levels are complete. Pedestrian access along 42nd street will be maintained throughout construction, via existing sidewalk currently between the existing Safeway building and 42nd street.

Chesapeake Street – Construction traffic will NOT access the project site via Chesapeake street.

River Road – Construction activity along River Road will occur during the creation of the new entrance

## Rodent Control

As required by DCRA for RAZE of all buildings, Vector Control will be administered, ensuring any rodents within the existing buildings are properly eradicated. During construction operations DAVIS will continue Vector Control as necessary, in addition to standard jobsite housekeeping. All construction debris, and debris from worker lunches will be confined to the designated break areas and identified dumpster locations. Limiting the locations for worker breaks, with debris/trash confined to the identified zone, will assist in keeping the jobsite clean.

The traffic management plan has two main goals: First, to route construction traffic in such a way that it reduces traffic to residential streets, and second, allowing for separation of construction traffic/activities from the day-to-day traffic/access to the High School by restricting construction traffic along Davenport Street. The construction traffic route to/from the project site is predominantly by way of Wisconsin Avenue and Ellicott Street. The installation of the new garage entrance along River Road, once completed, will also provide additional access to the High School and assist with non-construction-related traffic flow.

### Adjacent Properties and Roadways

43rd Street – Construction traffic will access the site via Ellicott Street, not 43rd Street. When demolishing the 4815 43rd Street residence, access will be from within the project boundary and not 43rd Street. Work is scheduled to replace the existing gate/fence separating the 43rd street from the GDS property. During this work activity, additional security fencing will be installed to properly secure the project site.

Ellicott Street – Ellicott Street is the main access route to/from the project site. Reference Exhibit A, which identifies the path of travel from Wisconsin Avenue to Ellicott Street to the project site. All construction related traffic will arrive via Wisconsin Avenue, utilizing only the eastern portion of Ellicott

rodents within the existing buildings are properly eradicated. During construction operations DAVIS will continue Vector Control as necessary, in addition to standard jobsite housekeeping. All construction debris, and debris from worker lunches will be confined to the designated break areas and identified dumpster locations. Limiting the locations for worker breaks, with debris/trash confined to the identified zone, will assist in keeping the jobsite clean.

### Security + Badging

All persons entering the Project Site are required to display a valid DAVIS hardhat sticker. DAVIS will issue the hard hat sticker to individuals after completion of the Safety Orientation prior to the start of work on their first day. All persons are required to wear issued DAVIS hardhat sticker and visible at ALL times.

### Tobacco Use

DAVIS has instituted a zero-tolerance tobacco-free policy on this Project Site. This policy bans tobacco use on the Project Site, Project Entrances and perimeter of the site. Any individuals found in violation of this policy will be escorted from the Project Site for the day and notification will be issued to their employer.



# Appendix - Construction Management Plan

## Schedule + Logistics

### Construction Schedule

The construction of the new Lower Middle School will commence Summer 2018 and conclude for the start of school September 2020. DAVIS is committed to minimizing construction activity, noise and any disruptions through the duration of the project. Noise control is critical as the project site is in close proximity to the adjacent High School and surrounding community homes. As per Department of Consumer and Regulatory Affairs (DCRA) noise regulations, construction activities will occur between the hours of 7:00am and 7:00pm, Monday through Saturday. Any and all vehicles parked on site outside of these times will do so with engines turned off. There will be no idle engines running outside of the project working hours. DAVIS will remain in open communication with the adjacent High School, coordinating quiet construction times to coordinate with periods of testing at the school throughout the school year. DAVIS is mindful of student arrival/departure times and adjacent community

Street, and exit the same. Construction traffic will NOT access the project site via west portion of Ellicott Street.

42nd Street – A secondary (temporary) access point will be established from the project site to 42nd street. This temporary access point will only be in operation during the mass excavation for the below grade building and will be closed once excavation operations for the building below grade levels are complete. Pedestrian access along 42nd street will be maintained throughout construction, via existing sidewalk currently between the existing Safeway building and 42nd street.

Chesapeake Street – Construction traffic will NOT access the project site via Chesapeake street.

River Road – Construction activity along River Road will occur during the creation of the new entrance to the High School garage. In advance of this work, signage and barricades will be installed to notify general public in accordance with approved traffic control.

## Security + Badging

**All persons entering the Project Site are required to display a valid DAVIS hardhat sticker. DAVIS will issue the hard hat sticker to individuals after completion of the Safety Orientation prior to the start of work on their first day. All persons are required to wear issued DAVIS hardhat sticker and visible at ALL times.**

### Traffic Management

The traffic management plan has two main goals. First, to route construction traffic in such a way that it reduces traffic to residential streets, and second, allowing for separation of construction traffic/activities from the day-to-day traffic/access to the High School by restricting construction traffic along Davenport Street. The construction traffic route to/from the project site is predominantly by way of Wisconsin Avenue and Ellicott Street. The installation of the new garage entrance along River Road, once completed, will also provide additional access to the High School and assist with non-construction-related traffic flow.

### Adjacent Properties and Roadways

43rd Street – Construction traffic will access the site via Ellicott Street, not 43rd Street. When demolishing the 4815 43rd Street residence, access will be from within the project boundary and not 43rd Street. Work is scheduled to replace the existing gate/fence separating the 43rd street from the GDS property. During this work activity, additional security fencing will be installed to properly secure the project site.

Ellicott Street – Ellicott Street is the main access route to/from the project site. Reference Exhibit A, which identifies the path of travel from Wisconsin Avenue to Ellicott Street to the project site. All construction related traffic will arrive via Wisconsin Avenue, utilizing only the eastern portion of Ellicott

### Rodent Control

As required by DCRA for RAZE of all buildings, Vector Control will be administered, ensuring any rodents within the existing buildings are properly eradicated. During construction operations DAVIS will continue Vector Control as necessary, in addition to standard jobsite housekeeping. All construction debris, and debris from worker lunches will be confined to the designated break areas and identified dumpster locations. Limiting the locations for worker breaks, with debris/trash confined to the identified zone, will assist in keeping the jobsite clean.

### Security + Badging

All persons entering the Project Site are required to display a valid DAVIS hardhat sticker. DAVIS will issue the hard hat sticker to individuals after completion of the Safety Orientation prior to the start of work on their first day. All persons are required to wear issued DAVIS hardhat sticker and visible at ALL times.

### Tobacco Use

DAVIS has instituted a zero-tolerance tobacco-free policy on this Project Site. This policy bans tobacco use on the Project Site, Project Entrances and perimeter of the site. Any individuals found in violation of this policy will be escorted from the Project Site for the day and notification will be issued to their employer.

# Appendix - Construction Management Plan

## Schedule + Logistics

### Construction Schedule

The construction of the new Lower Middle School will commence Summer 2018 and conclude for the start of school September 2020. DAVIS is committed to minimizing construction activity, noise and any disruptions through the duration of the project. Noise control is critical as the project site is in close proximity to the adjacent High School and surrounding community homes. As per Department of Consumer and Regulatory Affairs (DCRA) noise regulations, construction activities will occur between the hours of 7:00am and 7:00pm, Monday through Saturday. Any and all vehicles parked on site outside of these times will do so with engines turned off. There will be no idle engines running outside of the project working hours. DAVIS will remain in open communication with the adjacent High School, coordinating quiet construction times to coordinate with periods of testing at the school throughout the school year. DAVIS is mindful of student arrival/departure times and adjacent community

Street, and exit the same. Construction traffic will NOT access the project site via west portion of Ellicott Street.

42nd Street – A secondary (temporary) access point will be established from the project site to 42nd street. This temporary access point will only be in operation during the mass excavation for the below grade building and will be closed once excavation operations for the building below grade levels are complete. Pedestrian access along 42nd street will be maintained throughout construction, via existing sidewalk currently between the existing Safeway building and 42nd street.

Chesapeake Street – Construction traffic will NOT access the project site via Chesapeake street.

River Road – Construction activity along River Road will occur during the creation of the new entrance to the High School garage. In advance of this work, signage and barricades will be installed to notify general public in accordance with approved traffic control.

## Tobacco Use

**DAVIS has instituted a zero-tolerance tobacco-free policy on this Project Site. This policy bans tobacco use on the Project Site, Project Entrances and perimeter of the site. Any individuals found in violation of this policy will be escorted from the Project Site for the day and notification will be issued to their employer.**

### Traffic Management

The traffic management plan has two main goals. First, to route construction traffic in such a way that it reduces traffic to residential streets, and second, allowing for separation of construction traffic/activities from the day-to-day traffic/access to the High School by restricting construction traffic along Davenport Street. The construction traffic route to/from the project site is predominantly by way of Wisconsin Avenue and Ellicott Street. The installation of the new garage entrance along River Road, once completed, will also provide additional access to the High School and assist with non-construction-related traffic flow.

### Adjacent Properties and Roadways

43rd Street – Construction traffic will access the site via Ellicott Street, not 43rd Street. When demolishing the 4815 43rd Street residence, access will be from within the project boundary and not 43rd Street. Work is scheduled to replace the existing gate/fence separating the 43rd street from the GDS property. During this work activity, additional security fencing will be installed to properly secure the project site.

Ellicott Street – Ellicott Street is the main access route to/from the project site. Reference Exhibit A, which identifies the path of travel from Wisconsin Avenue to Ellicott Street to the project site. All construction related traffic will arrive via Wisconsin Avenue, utilizing only the eastern portion of Ellicott

### Rodent Control

As required by DCRA for RAZE of all buildings, Vector Control will be administered, ensuring any rodents within the existing buildings are properly eradicated. During construction operations DAVIS will continue Vector Control as necessary, in addition to standard jobsite housekeeping. All construction debris, and debris from worker lunches will be confined to the designated break areas and identified dumpster locations. Limiting the locations for worker breaks, with debris/trash confined to the identified zone, will assist in keeping the jobsite clean.

### Security + Badging

All persons entering the Project Site are required to display a valid DAVIS hardhat sticker. DAVIS will issue the hard hat sticker to individuals after completion of the Safety Orientation prior to the start of work on their first day. All persons are required to wear issued DAVIS hardhat sticker and visible at ALL times.

### Tobacco Use

DAVIS has instituted a zero-tolerance tobacco-free policy on this Project Site. This policy bans tobacco use on the Project Site, Project Entrances and perimeter of the site. Any individuals found in violation of this policy will be escorted from the Project Site for the day and notification will be issued to their employer.



# Appendix - Communication Methodology

## What is on: [www.gds.org/schoolunification](http://www.gds.org/schoolunification)

### Before Town Hall

- Community is asked to submit questions, comments and concerns to [TalktoGDS@gds.org](mailto:TalktoGDS@gds.org) in advance\*
- Town Hall agenda will be uploaded to the School Unification web page a minimum of 24 hours in advance

### Town Hall

- Presentation based on the Town Hall agenda

### After Town Hall

- A summary or FAQ will be uploaded to the web page approximately five days after the Town Hall

### Monthly Update

- A past and current month's update of the general construction progress will be uploaded on the first Monday of each month

### Weekly Update

- Daily time lapse images will be updated every Wednesday