

Enrollment & Demographics

October 21, 2019

Enrollment & Demographics

- ❑ Enrollment Statistics
- ❑ Demographics
- ❑ Forecasting

Enrollment Statistics



2019-20
Current
Enrollment

31,106
students



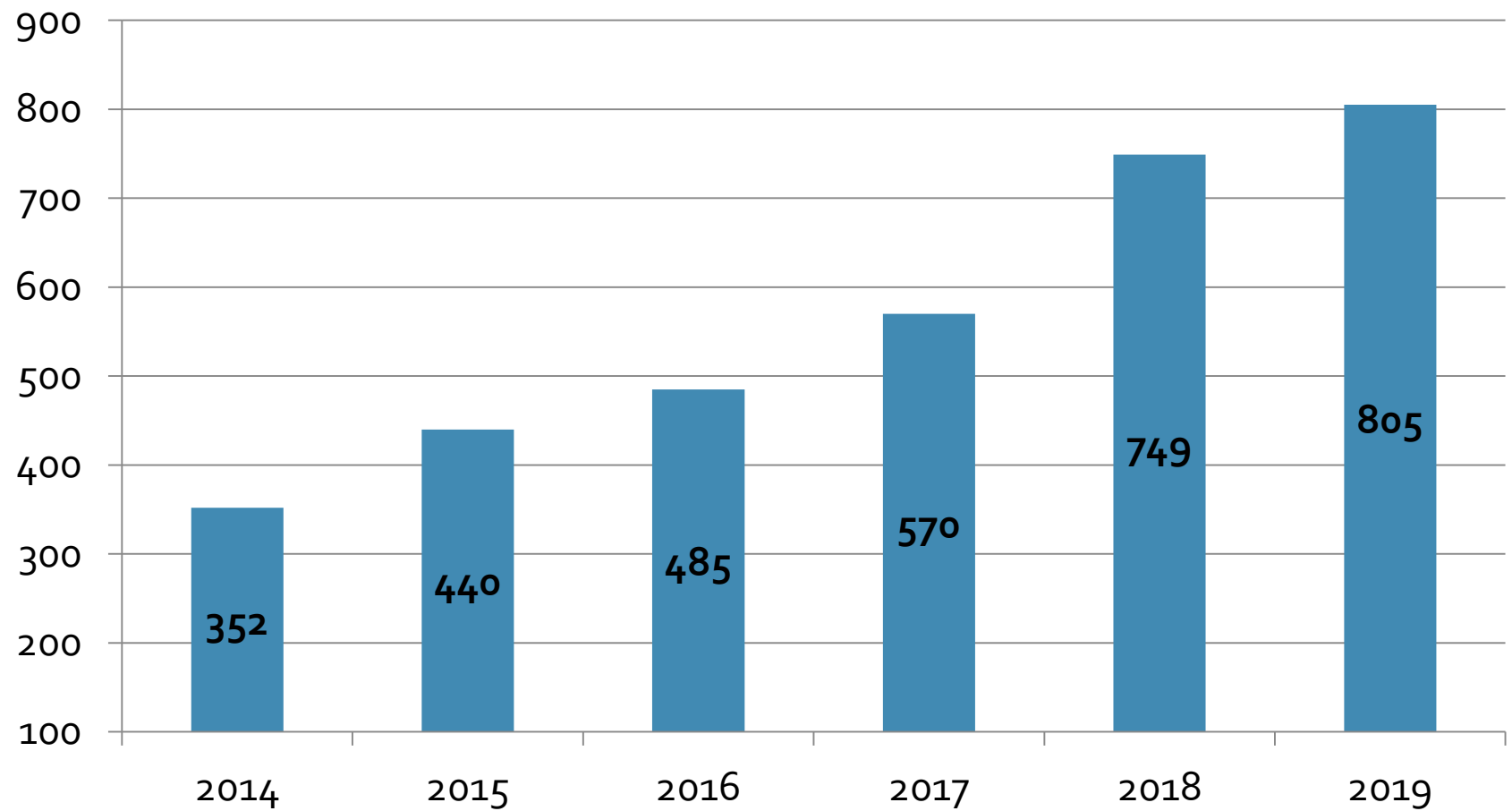
Enrollment – October 1 Headcount

	2014-15	2015-16	2016-17	2017-18	2018-19	2019-20
	<u>Actual</u>	<u>Actual</u>	<u>Actual</u>	<u>Actual</u>	<u>Actual</u>	<u>Actual</u>
Elementary (K-5)	13,323	13,801	14,508	14,774	14,930	15,348
Middle School (6-8)	6,160	6,301	6,623	6,838	7,041	7,329
High School (9-12)	7,033	7,228	7,381	7,494	7,568	7,893
Subtotal	26,516	27,330	28,512	29,106	29,539	30,570
Skills Center	84	423	404	406	368	478
EMK12	116	77	90	58	75	58
Total	26,716	27,830	29,006	29,570	29,982	31,106
Increase	668	1,114	1,176	564	412	1,124
Percentage Increase	2.6%	4.2%	4.2%	1.9%	1.4%	3.7%

Enrollment – Budget vs. Actual Headcount

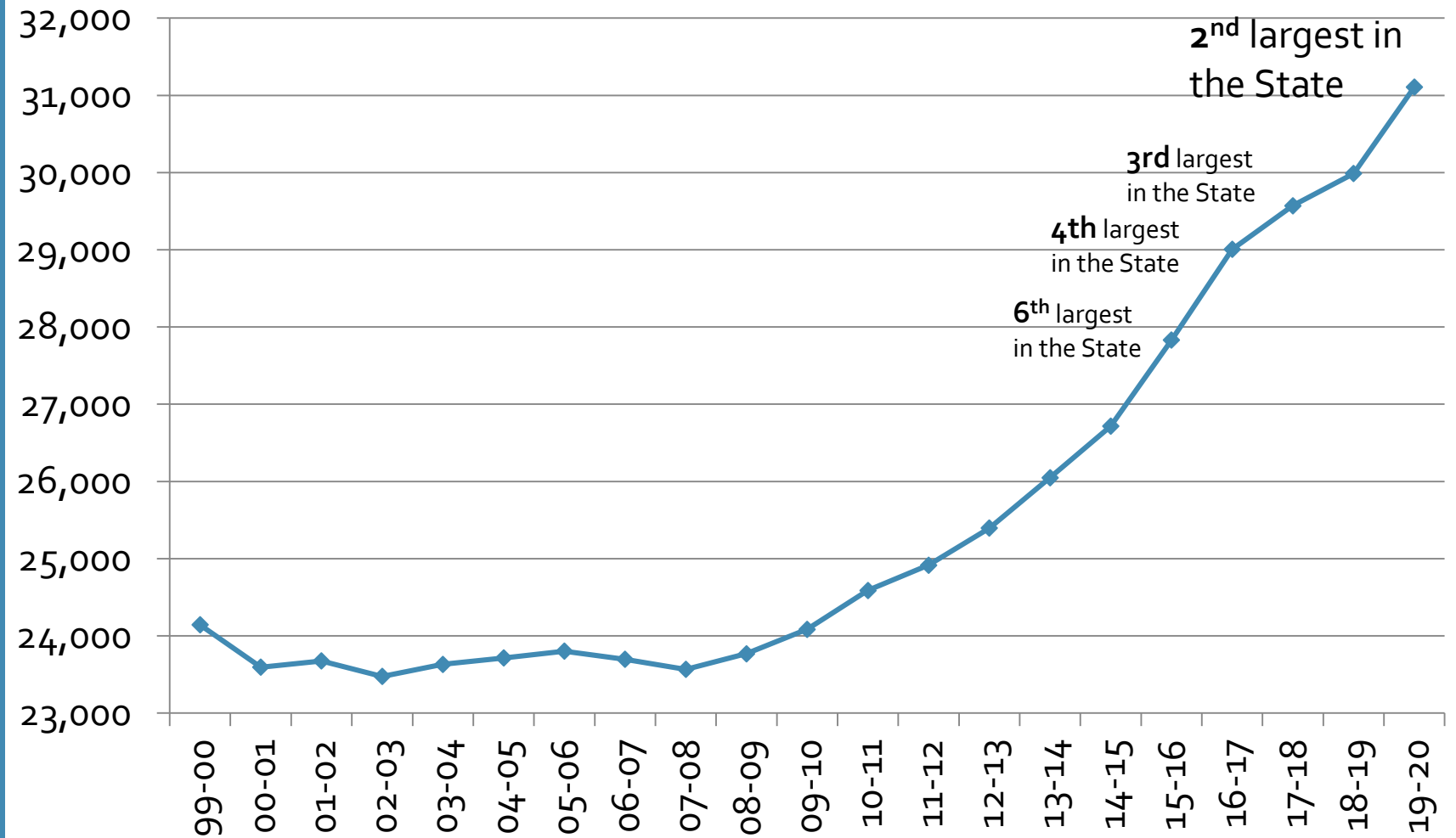
	2019-20	2019-20	
	<u>Budget</u>	<u>Actual</u>	<u>Change</u>
Elementary (K-5)	14,952	15,348	396
Middle School (6-8)	7,163	7,329	166
High School (9-12)	7,854	7,893	39
Subtotal	29,969	30,570	601
Skills Center	514	478	(36)
EMK12	60	58	(2)
Total	30,543	31,106	563

Running Start Enrollment



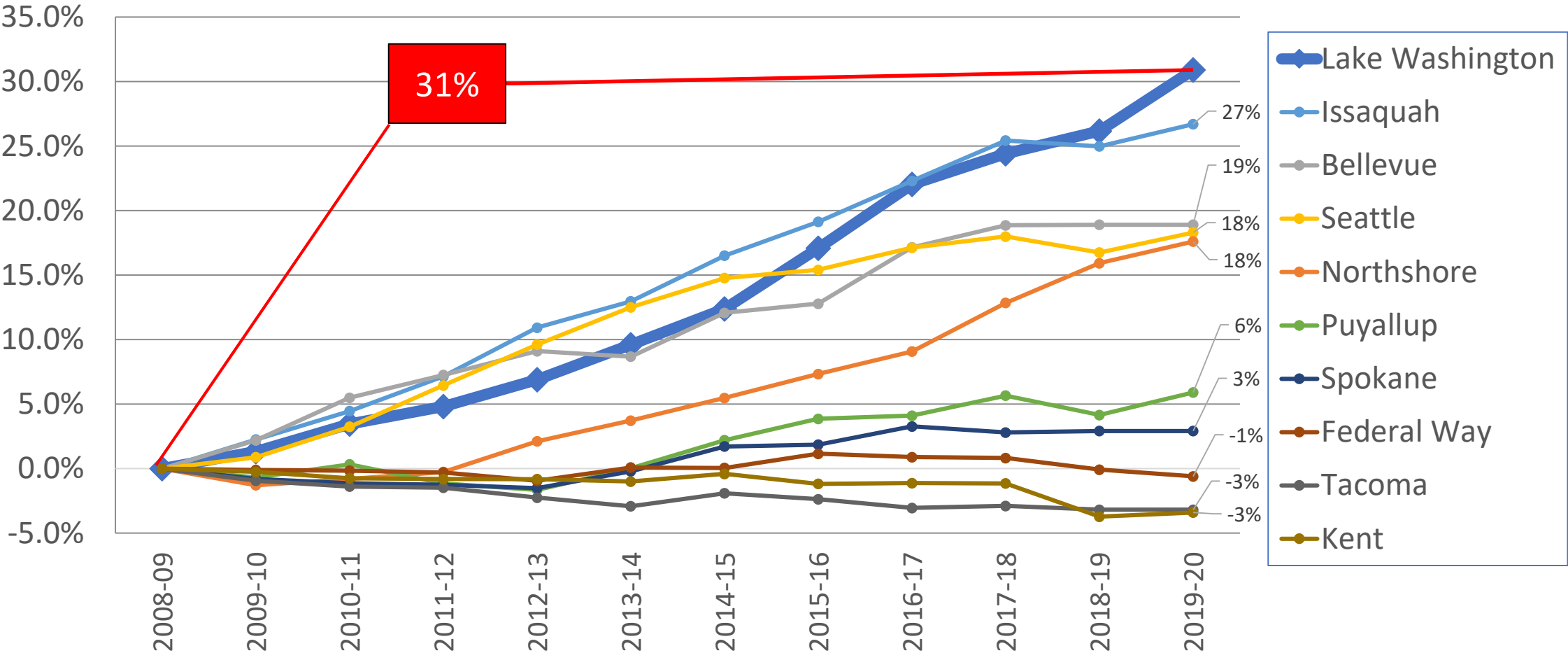
Lake Washington has gone from the 6th largest School District in the state to the 2nd largest in 5 years

Enrollment has increased **31%** since 2008



LWSD is one of the fastest growing school districts in the Puget Sound Area

Percentage Growth over 11-year period



Spokane is included as it is the 3rd largest school district in the state. Seattle is 1st, Lake Washington is 2nd, Tacoma is 4th

Historical Enrollment Growth

- The district has had **11 straight years of enrollment increases**
- From 2008 to 2019 the district's enrollment grew by an average of **667 students per year**
- This is the size of a **large elementary school each year**

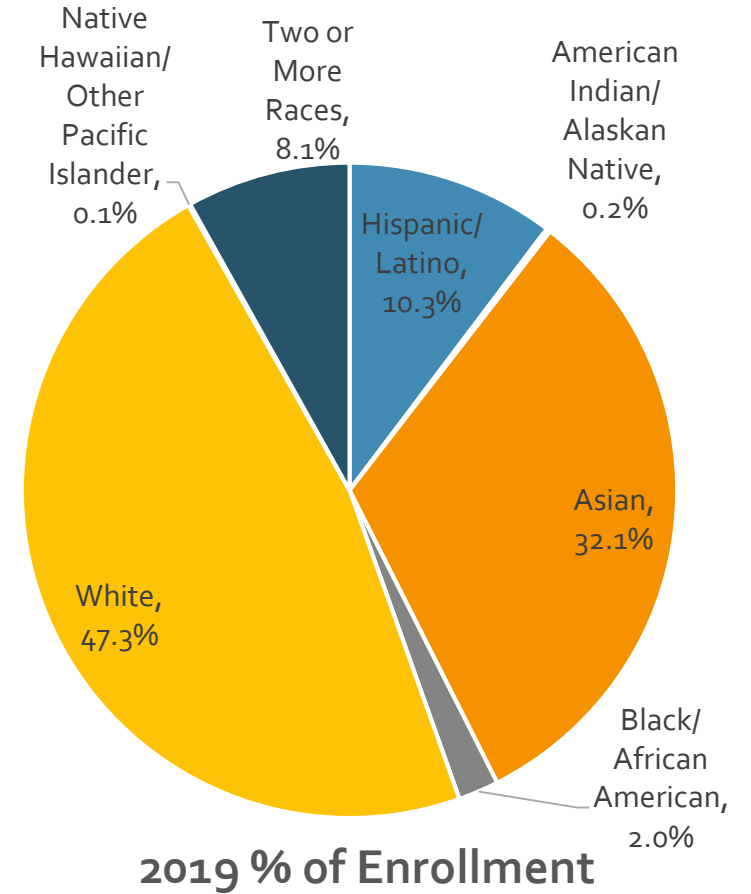
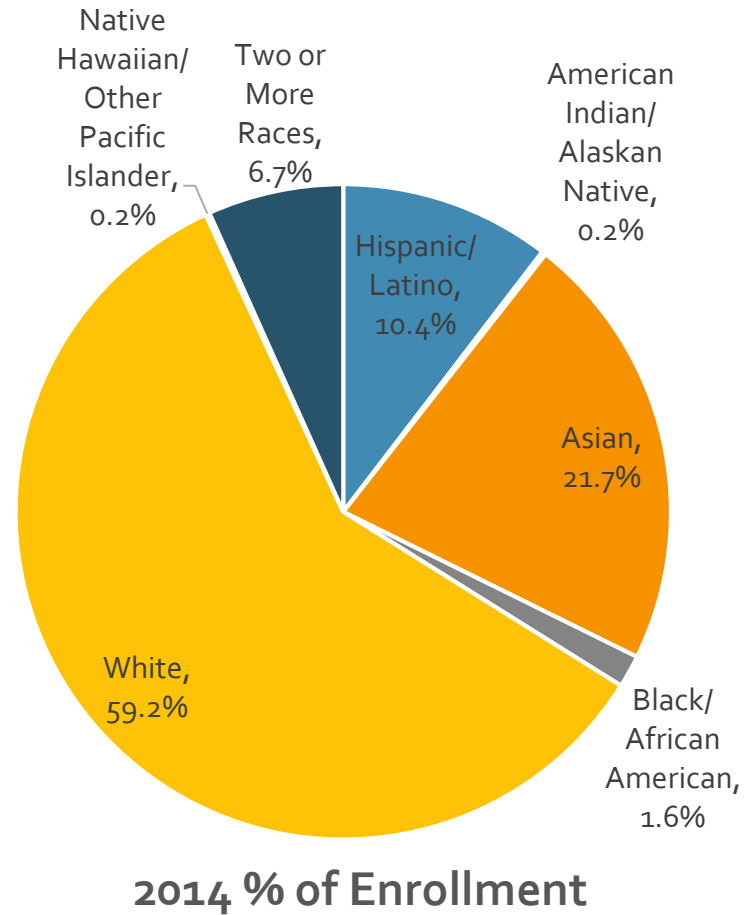
Enrollment – Six Largest Districts

	2014-15		2015-16		2016-17		2017-18		2018-19		2019-20	
	October Head	Rank	October Head	Rank	October Head	Rank	October Head	Rank	October Head	Rank	October Head	Rank
Seattle	52,053	1	52,300	1	53,091	1	53,385	1	52,947	1	53,628	1
Lake Washington	26,716	6	27,830	4	29,006	3	29,570	3	29,982	3	31,106	2
Spokane	30,179	2	30,220	2	30,640	2	30,500	2	30,532	2	30,539	3
Tacoma	28,420	3	28,303	3	28,113	4	28,139	4	28,062	4	28,202	4
Kent	26,723	5	26,512	5	26,529	6	26,523	5	25,833	5	25,913	5
Evergreen	26,868	4	26,381	6	26,447	5	26,056	6	25,630	6	25,273	6

Demographics



Ethnicity/Race Change in % of Total Enrollment



From District Ethnic report. 2019 is preliminary
% may not equal 100 due to rounding

EL Program

Year	Enrollment	% Increase	% of Total Enrollment
2019-20	3,174	5.80%	10.2%
2018-19	3,000	7.80%	10.0%
2017-18	2,782	1.90%	9.4%
2016-17	2,730	16.30%	9.4%
2015-16	2,347	14.80%	8.4%
2014-15	2,045	22.60%	7.7%

October P223 data.

Special Education Program

Year	Birth-2	Preschool	K-21	Total Enrollment	% Increase	% of Total Enrollment*
2019-20	283	230	3032	3,545	2.3%	9.7%
2018-19	275	236	2954	3,465	1.6%	9.9%
2017-18	271	210	2930	3,411	(0.7%)	9.9%
2016-17	255	225	2955	3,435	0.6%	10.2%
2015-16	237	218	2959	3,414	0.9%	10.6%
2014-15	219	235	2929	3,383	0.1%	11.0%

October P223 data. Includes Birth-2 and Preschool. *K-21 Special Education to Total K-12 enrollment

Free and Reduced Eligibility

Year	Eligibility	% Change	% of Total Enrollment
2019-20	3,259	(1.3%)	10.5%
2018-19	3,303	0.8%	11.0%
2017-18	3,276	(5.8%)	11.1%
2016-17	3,479	(3.5%)	12.0%
2015-16	3,606	(2.0%)	13.0%
2014-15	3,680	(8.0%)	13.8%

October data 2019 is preliminary

Forecasting

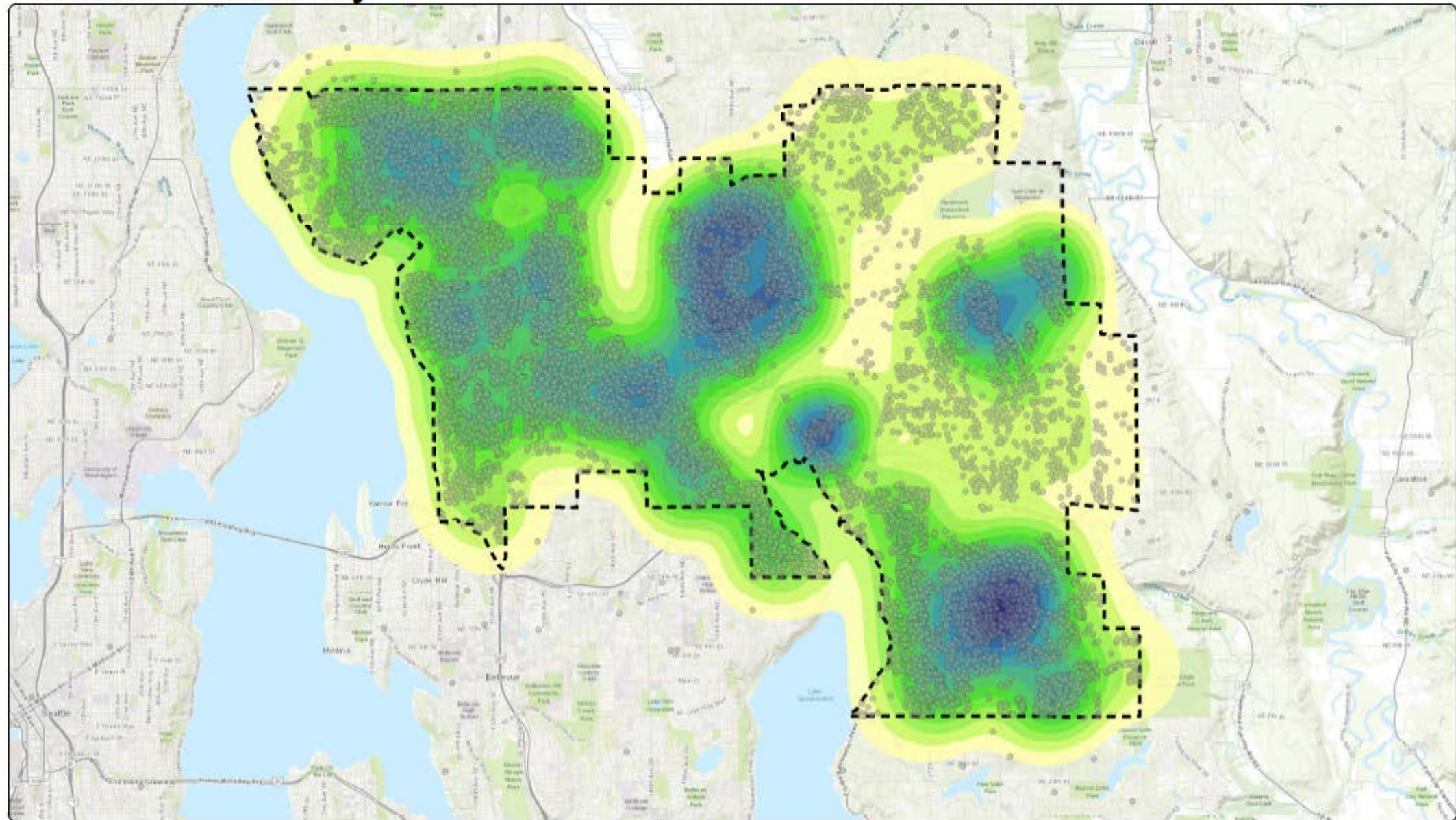


Enhanced Forecasting and Demographics

- The district has contracted with FLO Analytics to enhance the districts long-range enrollment projection work by:
- Using innovative mapping (GIS) and data analysis tools to provide visual representation of student enrollment
 - Current and historic Enrollment trends and demographics
 - Future Enrollment Projections
 - Land Use and Development Mapping
 - Assist with School Attendance Boundary Processes
- Work began in early summer and we expect to have enrollment forecast by January alongside the district long-range forecast



Student Density



0 0.25 0.5 1 Miles



Student Household



District Boundary



10/2019 Student Information System

