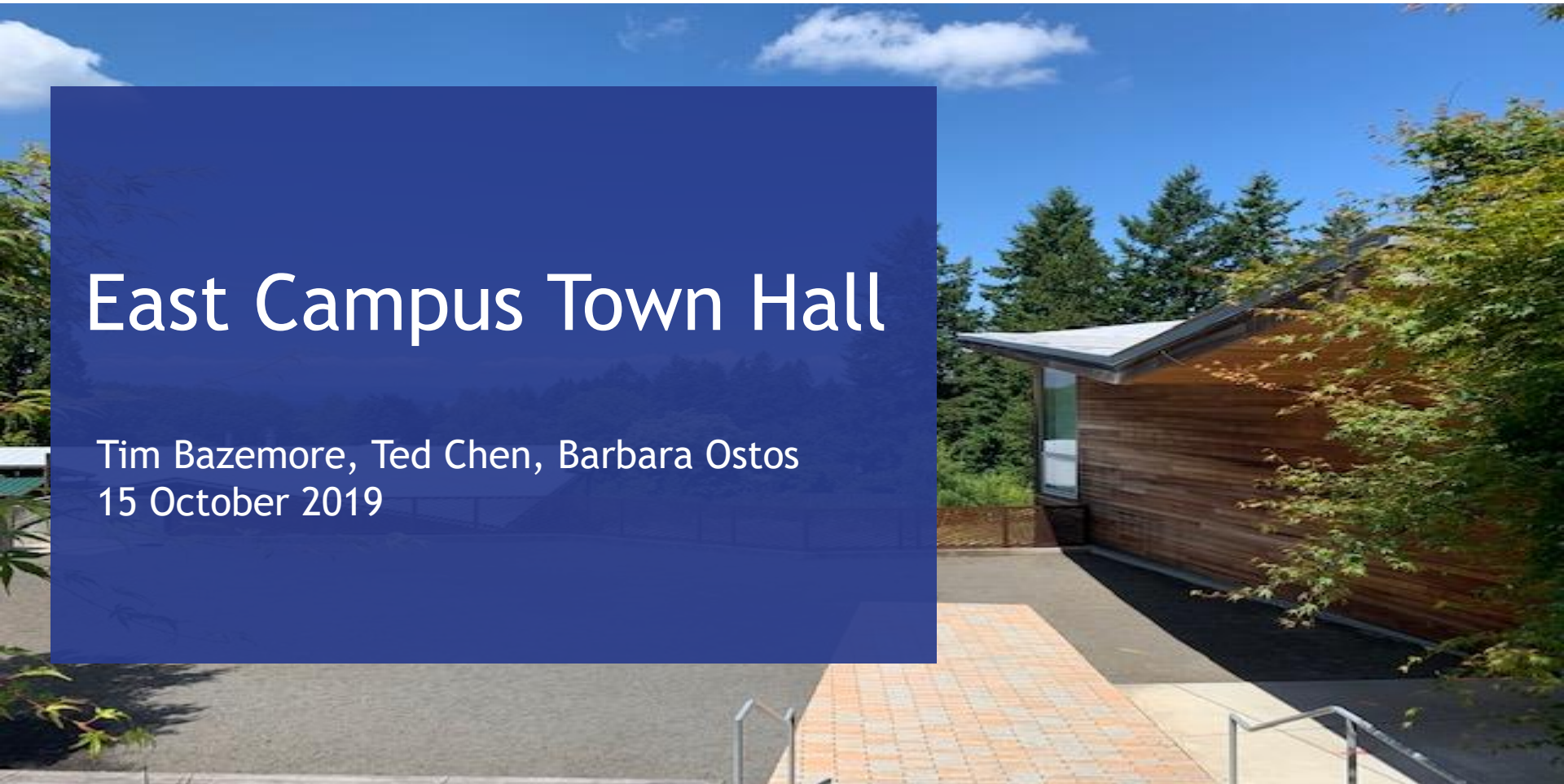




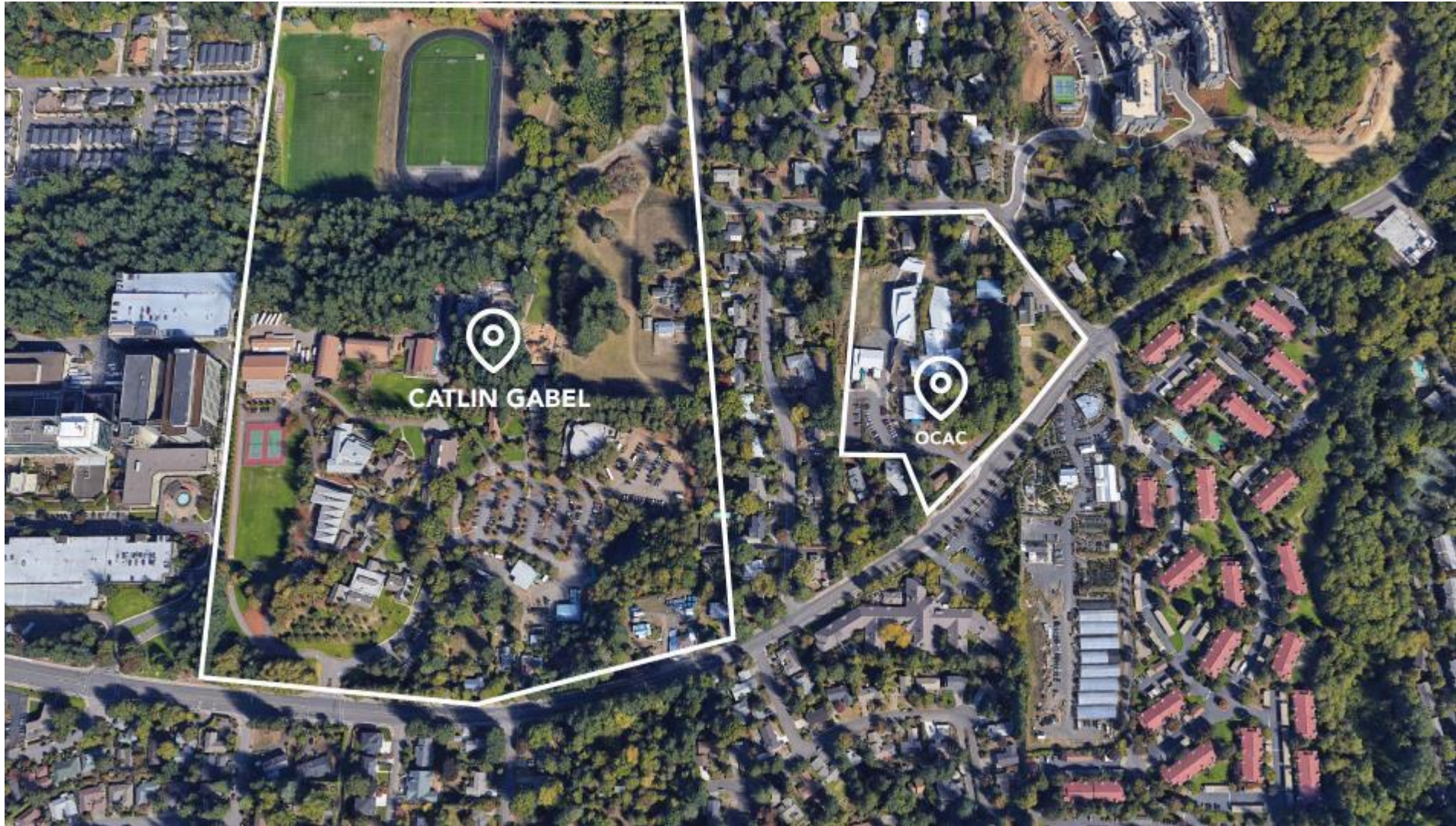
Catlin Gabel

East Campus Town Hall

Tim Bazemore, Ted Chen, Barbara Ostos
15 October 2019



Catlin Gabel's Main Campus and East Campus





New Middle School Campus

Community Arts



What do you hope to learn and discuss today?

Process

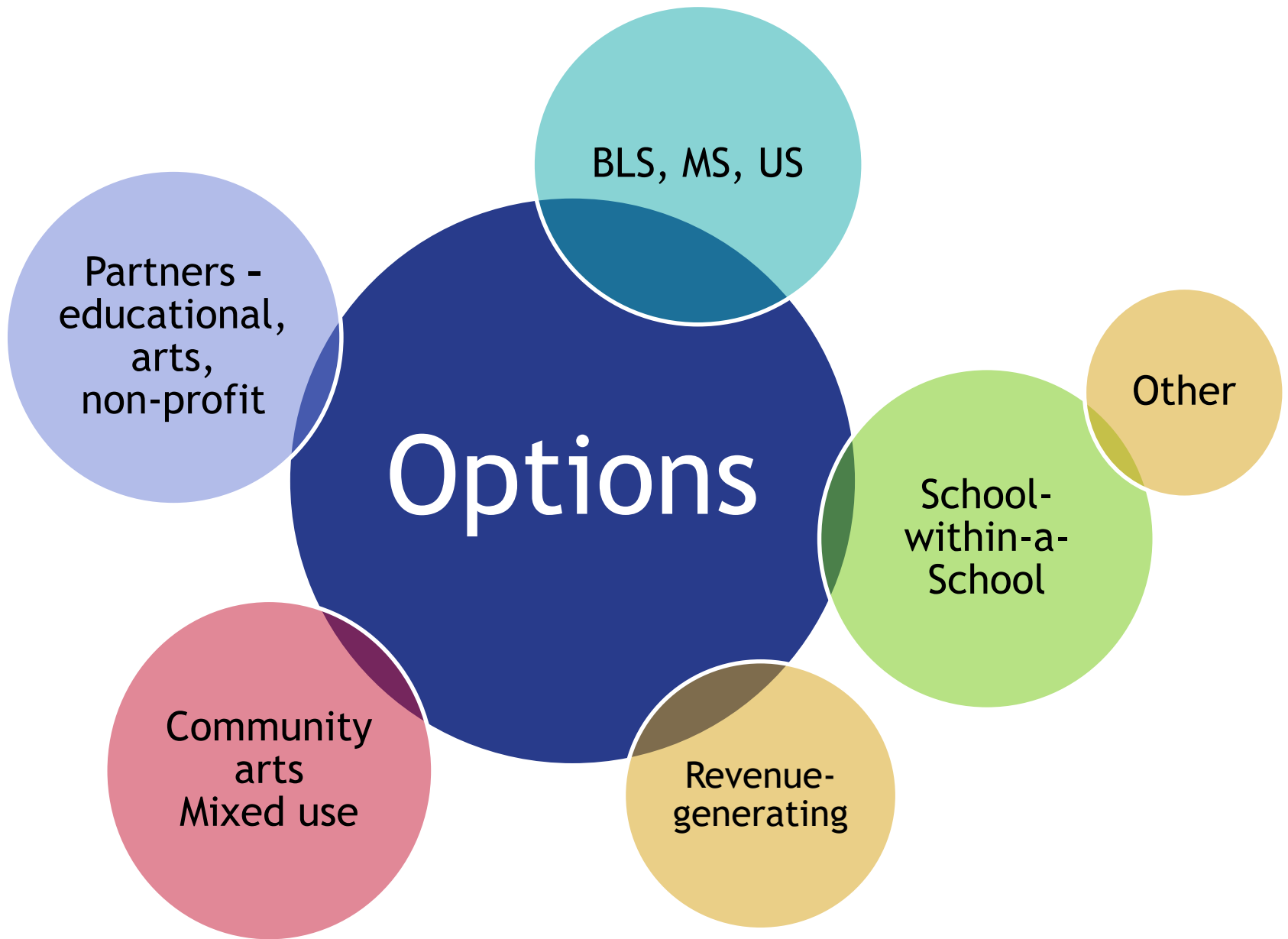
May 2019:
Community
visioning
sessions

**Summer
2019:**
Building
and space
analysis

**September
2019:**
Renovation
estimates
on both
campuses

**May/June
2019:**
Admin.
and Board
discussions

**Summer
2019:**
Divisional
needs
mapped to
EC spaces



Decision Criteria

- Best for all students
- Honor Master Plan Themes
- School culture
- Support enrollment growth
- Environmental impact
- Cost and funding
- Public purpose
- Parking and traffic needs
- Schedule and logistics



Why Middle School

- Unique age group, needs = unique campus experience
- Unique, student-friendly spaces on east campus
- 3 grades, 190 students - smallest division
- US too big to move, don't want split division
- LS space needs, Fir Grove and playground
- Least renovation, least parking of options
- MS building for US growth - wonderful opportunity for US
- School-within-school, for-profit, etc. not our mission
- Community engagement - arts, Touchmark, etc.

Questions to Resolve

- One-school culture
- Travel between campuses
- Access to PE/athletics and CAC
- Crossover students/teachers
- Food Service
- Shared main campus spaces
- Timeline and transition process

Main Campus Improvements



Barn Roof



Athletics and Wellness Center



Lower School

Enrollment Growth and Timeline



~100
students

Begin phase-
in Fall 2023(?)

Finances

Funding the
Campus
Purchase

Funding MS
Renovations,
Five-Year
Financial
Modeling

Funding the
Athletics and
Wellness
Center

Current Steps

- East Campus: maintenance and repairs, structural and environmental, master plan for MS
- Washington County: Land use, traffic, Leahy use and Leahy entrance
- Main Campus: Athletics and Wellness Center architect selected

Catlin Gabel's Main Campus and East Campus

