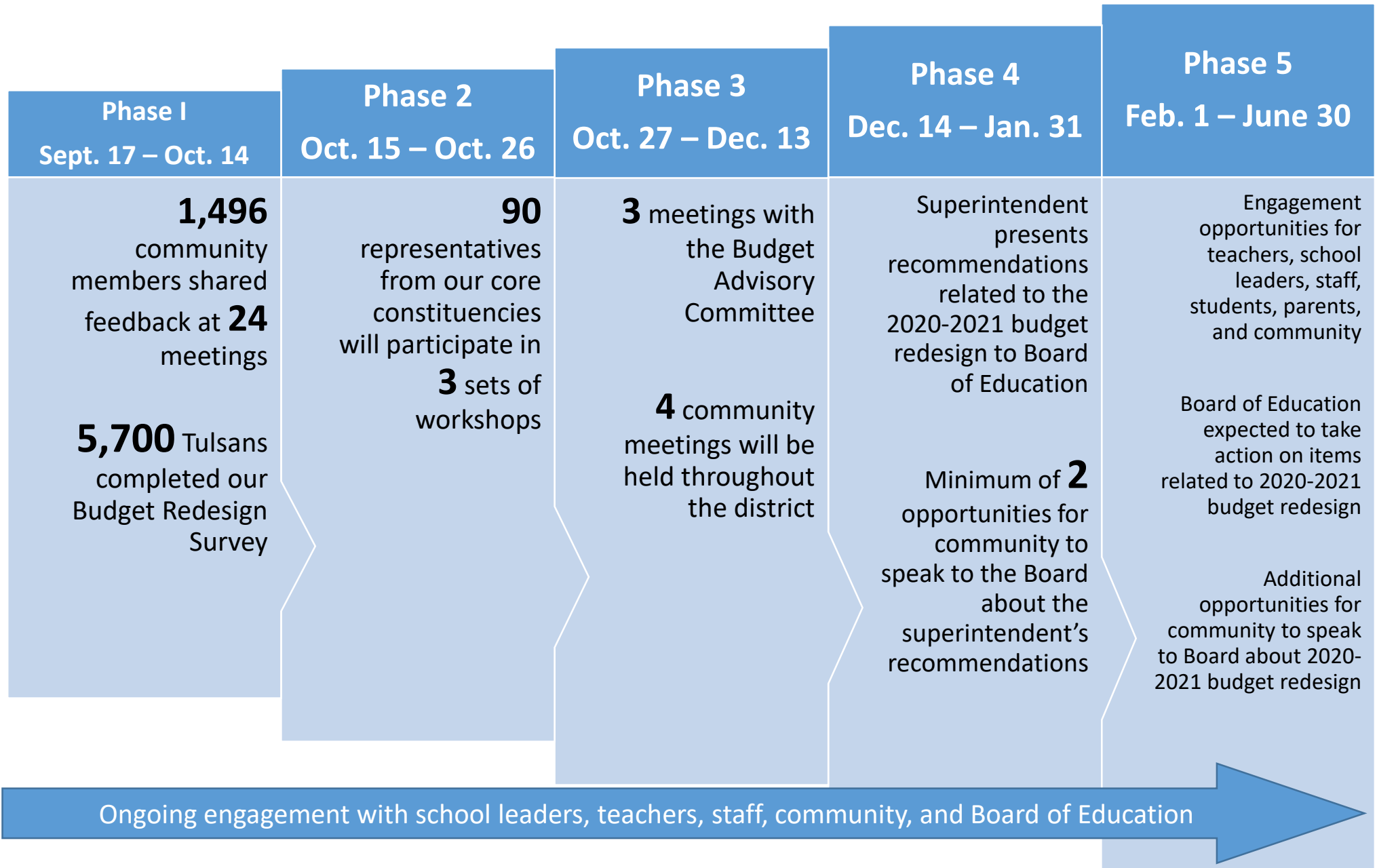


Shaping Our Future – Tulsa Public Schools Budget Redesign Community Engagement Overview



We believe that our community is essential

Phase 1 meetings and survey are open to all community members.

Phase 2 community workshops include representatives from our core constituencies: all principals, Tulsa Classroom Teachers Association Building Delegates, Board of Education, representatives from the American Federation of Teachers, the Budget Advisory Committee, Community Advisory Council, Superintendent's Student Cabinet and Teacher Cabinet, and the Tulsa Council of PTAs.

Phase 3 meetings of the Budget Advisory Council include a diverse group of 39 community and business leaders who will support Tulsa Public Schools by providing input and feedback on potential strategic investments and resource reallocations.