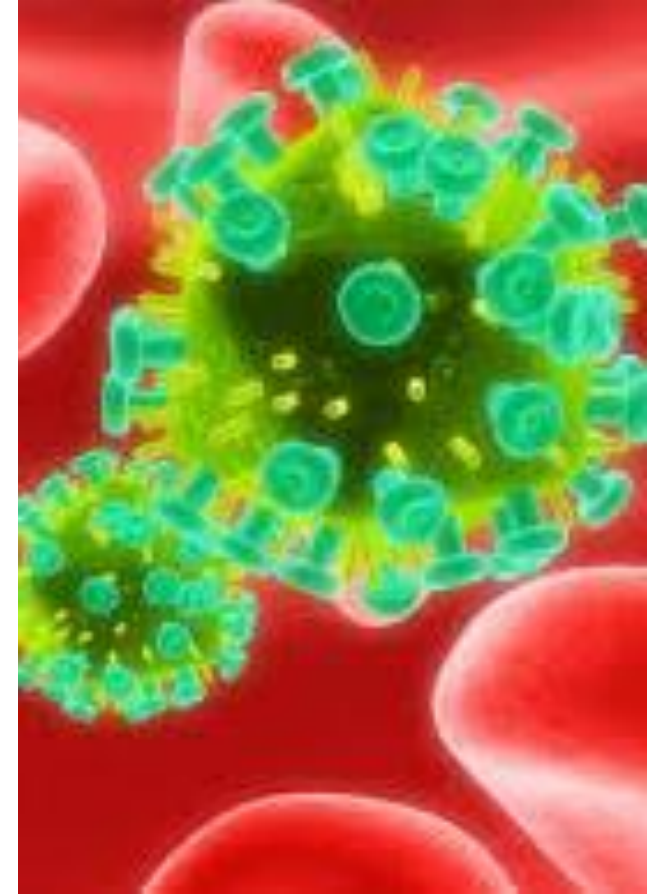




**EDEN PRAIRIE SCHOOLS**

**Inspiring each student every day**

**Bloodborne Pathogens and  
Infectious Agents Training  
1910.1030**



# Required Quiz

- There is a quiz for this training that must be completed as documentation that you have received the training.
- On the last slide of this presentation there is a link to the quiz.
- If you have any questions, please contact:
  - Kyle Fisher - Facilities and Safety Coordinator, [Kyle\\_fisher@edenpr.org](mailto:Kyle_fisher@edenpr.org)
  - Kay Erickson - Health and Safety Coordinator, [kerickson@edenpr.org](mailto:kerickson@edenpr.org)



# Why are you receiving this training?

- For your protection
- For your awareness



- MN OSHA required for all covered employees
  - Initial Job Assignment & annually thereafter

# Who is responsible for your safety?

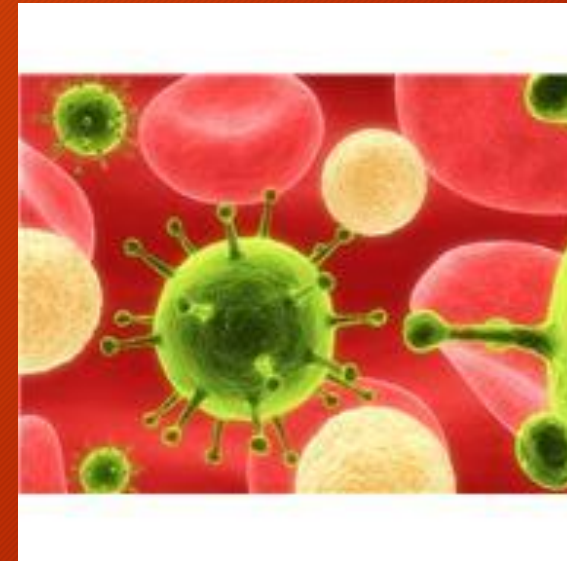
Your employer is required to provide you with the knowledge and tools needed to protect yourself and others from hazards in the workplace but...

**YOU ARE RESPONSIBLE FOR YOUR OWN SAFETY!**



# Infectious Diseases

A disease caused by a microorganism or other agent, such as a bacterium, fungus, or virus, that enters the body of an organism



# Common Infectious Agents

- Chicken pox (varicella-zoster virus)
- Conjunctivitis (Pink eye)
- Influenza (flu)
- Head lice (pediculosis)
- Human papillomavirus (HPV) (warts)
- MRSA (methicillin-resistant staphylococcus aureus)
- Pertussis (whooping cough)
- Strep Throat
- Bloodborne Pathogens

# Infectious Agents are Spread Through

- The air as small droplets
- Contact with feces
- Contact with the skin or mucus membranes (eyes, nose, mouth)
- Blood or other body fluids, for example, urine, saliva, breastmilk, semen and vaginal secretions



# Exposure Control Written Plan

- The BBP Program Administrator is Kyle Fisher
- The plan is maintained in the **Health Offices**
- The written plan identifies potential exposures along with appropriate responses
- Accessible to all employees & OSHA
- Reviewed/updated annually





# Who Does it Cover?

- All employees for whom exposure can be “reasonably anticipated” as part of their normal job duties.
- Employer responsible for evaluating potential for exposure and determining who is covered.

# What About You?

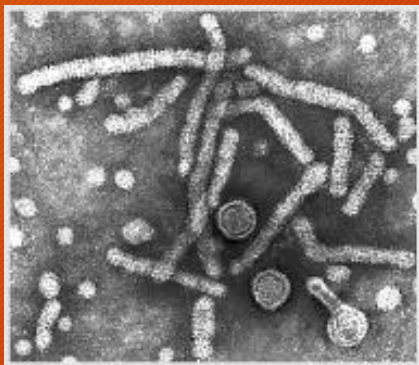
Employees typically covered under the Bloodborne Pathogen Program:

- Nurses
- Health Office Assistants
- Special Education Teachers/Paras
- Custodians
- Physical Education Teachers/Coaches
- Playground Assistants
- Early Education/Daycare Staff



# What is a Bloodborne Pathogen?

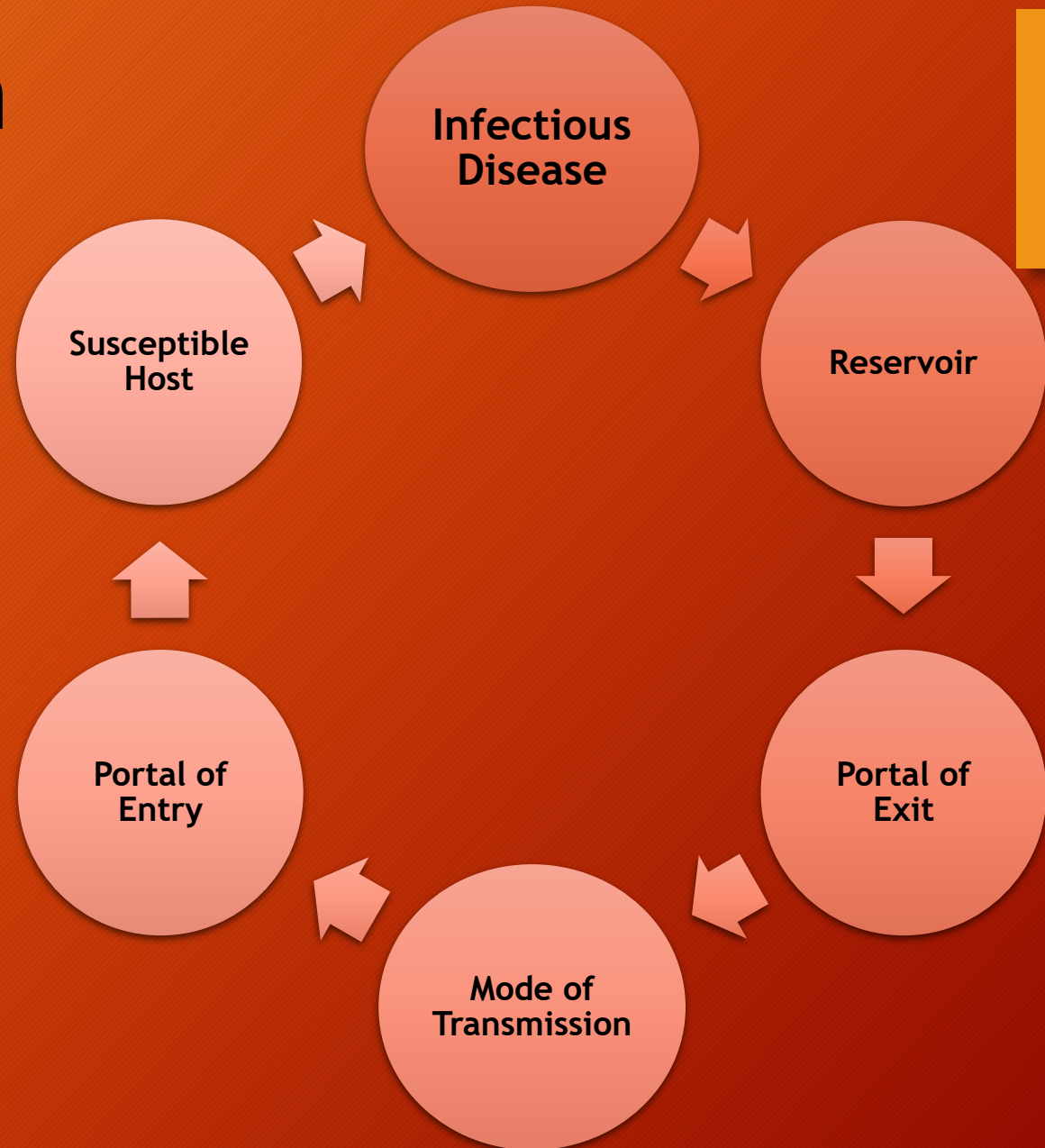
- Microscopic organisms that are carried in the blood and may cause disease in humans
- Bloodborne- transferred by blood
- Pathogen- micro-organisms that can cause disease in humans



# Chain of Infection

For an infection to develop,  
each link of the chain  
must be connected.

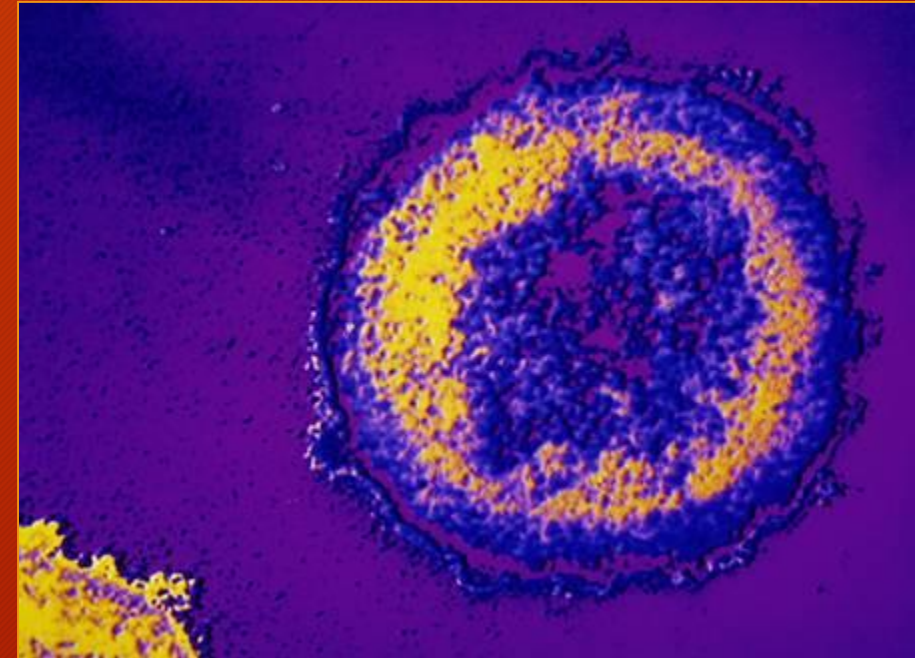
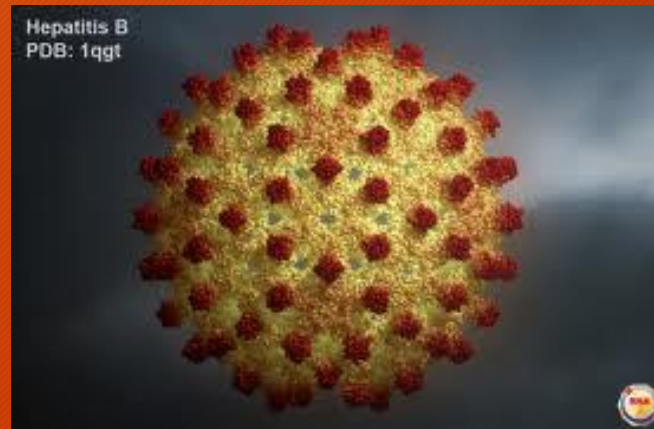
Breaking any link of the chain  
can stop the transmission  
of infection.





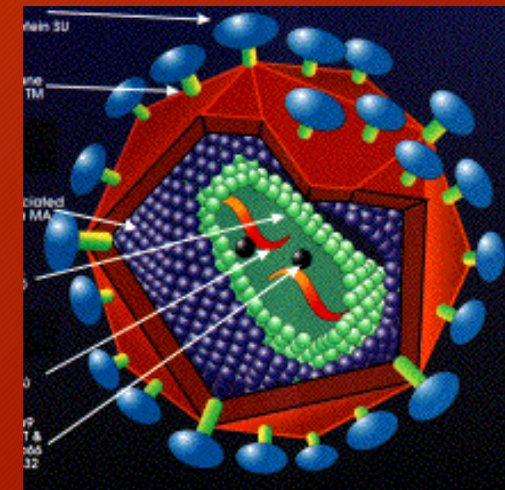
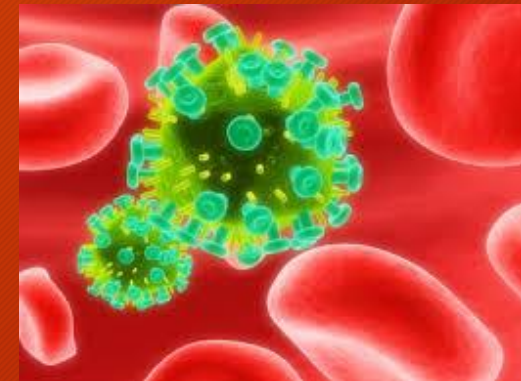
# What are some common Bloodborne Pathogen diseases?

- Hepatitis B (HBV)
- Hepatitis C (HCV)
- Human Immunodeficiency Virus (HIV)



# Human Immunodeficiency Virus (HIV)

- HIV is the virus that leads to AIDS.
- HIV depletes the immune system.
- HIV does not survive well outside the body.
- No threat on contracting HIV through casual contact.
- Initial symptoms are like the flu & sometimes no immediate symptoms.
- ***Risk of transmission:***
  - Needlestick- 0.3%
  - Splash/spray to mucous membranes- 0.09%





# Living with HIV/AIDS in MN

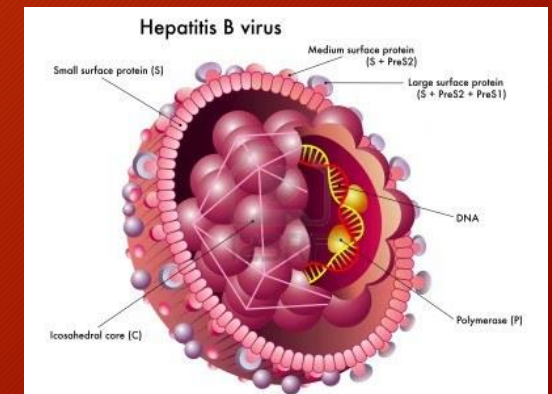
- As of December 31, 2017, 8,789 people are assumed alive and living in MN with HIV/AIDSs

- 4,751 living with HIV infection
- 4,038 living with AIDS



# Hepatitis B (HBV)

- May lead to chronic liver disease, liver cancer, and death
  - Vaccination available since 1982
  - **HBV can survive for at least one week in dried blood**
  - Symptoms can occur 1-9 months after exposure
- ***Symptoms include:***
    - jaundice
    - fatigue
    - abdominal pain
    - loss of appetite
    - intermittent nausea
    - vomiting





# Symptoms of Hepatitis B

- Fatigue
- Possible stomach pain
- Loss of appetite
- Nausea
- Jaundice
- Darkened urine
- Sometimes asymptomatic (~30%)

***1/3 of all HBV carriers don't know they are infected!***

# Hepatitis B Vaccination

- Series of three injections
- Mild to no side effects
- 95% effective when all doses taken
- Expected to be effective for 20 years



**If you are covered under the BBP plan and are interested in the vaccine, it will be provided by the district at no cost to you.**

# Hepatitis C (HCV)

- Attacks liver
- No vaccine
- 50-55% develop chronic liver disease
- New treatment for Chronic Hepatitis C - Harvoni. Treatment is having good results curing 96-99% of patients who have not been previously treated.



## Symptoms

- 80% of carriers are asymptomatic and may be for 20-30 years
- Fatigue
- Weight loss
- Nausea
- Depression





# Hepatitis B & C Statistics

- As of December 31, 2017, there are 23,779 people in MN living with chronic Hepatitis B infection.
- As of December 31, 2017, there are 34,720 people in MN living with Hepatitis C infection.

# What body fluids can contain Bloodborne Pathogens?



Blood and if blood is present in:

- Skin tissue
- Saliva
- Vomit
- Urine/Feces
- Semen or vaginal secretions
- Any other body fluid



# How is it passed from one person to another?

- Contact with another person's blood or bodily fluid that may contain blood
- Mucous membranes- eyes, mouth, nose
- Broken skin
- Contaminated sharps/needles



# Cleaning Procedures

- Wear protective gloves
- Use disposable towels to absorb spill
- Clean spill area with soap and water
- Use proper disinfectant - follow manufacturers instructions regarding kill/dwell time
- Dispose of waste in proper container

**BLOOD OR BODY FLUID SPILLS NEED TO BE CLEANED UP BY PROPERLY TRAINED PERSONNEL (CUSTODIAL STAFF) WHO HAVE THE PROPER EQUIPMENT AND SUPPLIES!!!**





# What precautions should you take to avoid infection?

- Wear Personal Protective Equipment
  - Gloves - when cleaning up
  - Gloves, safety glasses, mask, CPR mouth-to-mouth barriers - when performing first aid
- Treat all blood and bodily fluids as if they are contaminated
- Instruct injured person on self-care if possible
- Wash thoroughly during cleanup and decontamination
- Properly dispose of all contaminated material



# Universal Precautions

- *When rendering First Aid or cleaning up blood or bodily fluids.....*
- Treat all human blood and body fluids as infectious
  - No exceptions!
- At a minimum use disposable gloves & eye protection (if there is a potential for splashing).





# What should you know about PPE?

- Always check PPE for defects or tears before using.
- If PPE becomes torn or defective remove it and replace with new equipment.
- Remove PPE before leaving a contaminated area.
- Do not reuse disposable equipment.
- Dispose of contaminated PPE properly.



# What about hand washing?



- Wash hands immediately after removing PPE.
- Use a soft antibacterial soap.



- A hand sanitizer can be used but wash with soap and water as soon as possible.



# What should you do if you think you have been involved in a BBP exposure incident?



- An exposure incident is a specific incident of contact with potentially infectious bodily fluid.
- If there are no infiltrations of mucous membranes or open skin surfaces, it is not considered an incident.
- Report all incidents involving blood or bodily fluids to your supervisor and District Nurse.

# What is an Exposure?

- Blood contact with mucous membranes (eyes-nose-mouth)
- Blood contact with broken skin (Dermatitis, cuticles, cuts)
- Piercing mucous membranes or skin (Needle sticks, bites, cuts)





# Post-Exposure Procedures

## For Exposed Individuals:

- Wash exposed area thoroughly (15 minutes if possible).
- Report incident to Supervisor and District Nurse.
- Complete the 1<sup>st</sup> Report of Injury.
- Proceed to local health care provider for exam and follow-up.

# Recordkeeping

- *Medical Records & Exposure Incident Records*
  - Duration of employment + 30 years
- *Sharps Log*
  - Five years beyond completion of that calendar year
- *Training Records*
  - Three years





# Remember!



# Questions?

If you have any questions regarding this training, please contact:

Kyle Fisher

Facilities and Safety Coordinator

[Kyle\\_fisher@edenpr.org](mailto:Kyle_fisher@edenpr.org)

Kay Erickson

Health and Safety Coordinator

[kerickson@edenpr.org](mailto:kerickson@edenpr.org)

LINK TO THE REQUIRED QUIZ IS ON THE NEXT SLIDE



# REQUIRED QUIZ



**EDEN PRAIRIE SCHOOLS**

*Inspiring each student every day*

PLEASE CLICK ON THE LINK BELOW TO COMPLETE THE 10 QUESTION QUIZ. THE QUIZ DOCUMENTS THAT YOU HAVE COMPLETED THE TRAINING.

<https://forms.gle/iYiZJNEX1Uhu3b2Y8>