



**La Porte Independent School District
2014 Bond Program Status Report
March 28, 2017**



La Porte ISD 2014 Bond Program



ADMINISTRATION:

Superintendent:
Lloyd Graham

Deputy Superintendent:
Dr. Linda Wadleigh

Deputy Superintendent:
Mike Clausen

BOARD OF TRUSTEES:

Dee Anne Thomson (President)
David Janda (Vice President)
Lois Rogerson (Secretary)
Kathy Green
Phillip Hoot
Lee Wallace
Charlcya Wheeler

PROGRAM MANAGER:

Gallagher Construction Services
3501 Token Drive, Suite 100
Richardson, TX 75081

ARCHITECTS:

PBK Architects
11 Greenway Plaza 2210
Houston, TX 77046

IBI Group
455 East Medical Center Blvd., Suite 500
Houston, TX 77289

CONSTRUCTION MANAGERS AT RISK:

Tellepsen Builders
777 Benmar Dr Suite 400
Houston, TX 77060

Comex Corporation
9841 Spencer Hwy
La Porte, TX 77571

Morganti Texas, Inc.
350 N. Sam Houston Pkwy E
Houston, TX 77060



Lomax Elementary School Replacement



Architect: IBI Group

CM-at-Risk: Tellepsen Builders

Projected Total Cost: \$23,810,404

Square Footage: 108,500

Percent Complete: 100%

Substantial Completion: June 13, 2016

GMP Reconciliation:

Original GMP Amount \$22,000,000

Funds Returned to LPISD (\$448,500)

Final Contract Amount \$21,551,500





College Park Elementary School Additions and Renovations



Architect: IBI Group
CM-at-Risk: Comex Corporation
Projected Total Cost: \$8,133,747
Square Footage: 80,000
Percent Complete: 100%
Substantial Completion: May 10, 2016

GMP Reconciliation:
Original GMP Amount \$8,300,000
Funds Returned to LPISD (\$900,000)
Final Contract Amount \$7,400,000





La Porte Elementary School Renovations



Architect: IBI Group
CM-at-Risk: Tellepsen Builders
Projected Total Cost: \$2,191,154
Square Footage: 96,000
Percent Complete: 100%
Substantial Completion: August 14, 2015

GMP Reconciliation:
Original GMP Amount \$1,600,000
Funds Returned to LPISD (\$5,913)
Final Contract Amount \$1,594,087





Bayshore ES, Heritage ES, Reid ES, Rizzuto ES



Architect: IBI Group
CM-at-Risk: Tellepsen Builders
Projected Total Cost: \$2,548,554
Square Footage: N/A
Percent Complete: 100%
Substantial Completion: August 24, 2016

GMP Reconciliation:
Original GMP Amount \$2,661,116
Funds Returned to LPISD (\$539,262)
Final Contract Amount \$2,121,854





Baker 6th Grade Campus Replacement



Architect: IBI Group
CM-at-Risk: Tellepsen Builders
Projected Total Cost: \$29,060,702
Square Footage: 132,000
Percent Complete: 100%
Substantial Completion: August 19, 2016

GMP Reconciliation:
Original GMP Amount \$26,500,000
Funds Returned to LPISD (\$204,700)
Final Contract Amount \$26,295,300





La Porte Junior High School Additions and Renovations



Architect: IBI Group
CM-at-Risk: Tellepsen Builders
Projected Total Cost: \$16,634,680
Square Footage: 144,000
Percent Complete: 100%
Substantial Completion: August 24, 2016

GMP Reconciliation:
Original GMP Amount \$14,500,000
GMP Change Order #1 \$583,123
Funds Returned to LPISD (\$89,920)
Final Contract Amount \$14,993,203





Lomax Junior High School Renovations



Architect:	IBI Group	GMP Reconciliation:	
CM-at-Risk:	Comex Corporation	Original GMP Amount	\$5,300,000
Projected Total Cost:	\$5,629,289	Funds Returned to LPISD	(\$230,000)
Square Footage:	133,000	Final Contract Amount	\$5,070,000
Percent Complete:	100%		
Substantial Completion:	August 20, 2015		





LPISD Grounds Building



Architect: IBI Group

CM-at-Risk: Morganti Texas Inc.

Projected Total Cost: \$1,520,631

Square Footage: 17,110

Percent Complete: 100%

Substantial Completion: July 13, 2016

GMP Reconciliation:

Original GMP Amount \$1,549,416

Funds Returned to LPISD (\$128,552)

Final Contract Amount \$1,420,864

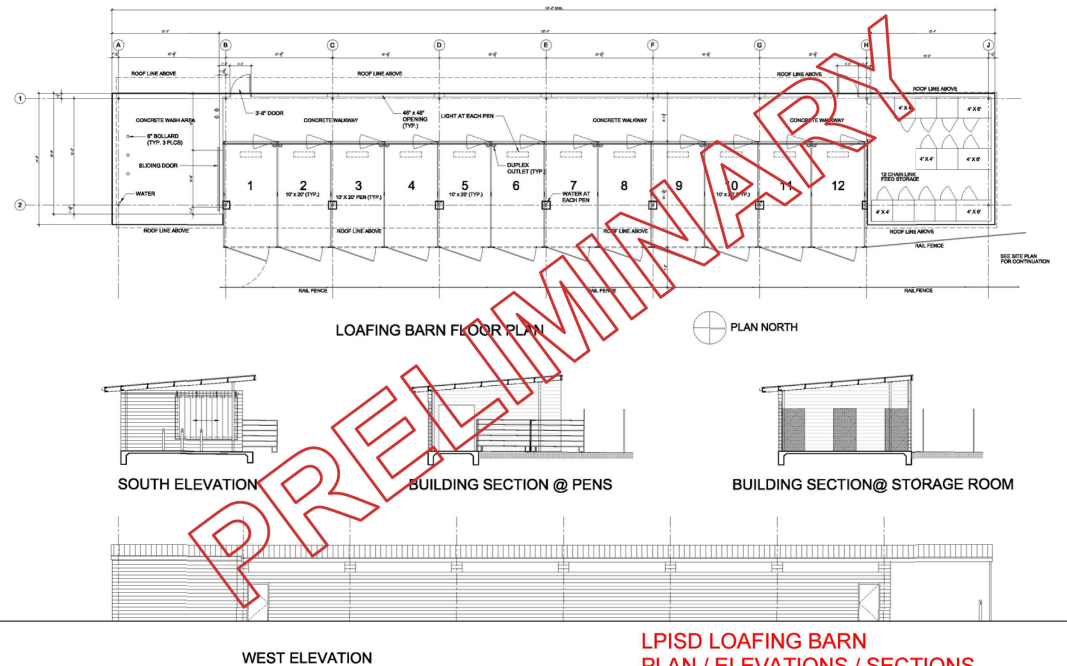




LPISD Loafing Barn



Architect: IBI Group
Contractor: TBD
Projected Budget: +/- \$500,000
Square Footage: +/- 4,000
Percent Complete: 0%
Substantial Completion: TBD



LPISD LOAFING BARN
PLAN / ELEVATIONS / SECTIONS
NO SCALE 12-21-16



La Porte High School Additions and Renovations



Architect: PBK Architects
CM-at-Risk: Tellepsen Builders
Projected Total Cost: \$111,403,941
Square Footage: 530,000
Percent Complete: 70%
Estimated Completion: September 2017 (April 2018 for Field House Renovation)

