



**ISD #15 St. Francis Area Schools
Building Projects
2017 - 2021**




Monday, May 20, 2019

Weekly Progress Report




East Bethel Elementary School

Anticipated Substantial Completion – August 16, 2019

Completed for Week Ending May 17, 2019:

-  Brick shipment for exterior walls
-  Weather barrier installation
-  Begin setting brick on exterior walls





Progress Planned for Week Ending May 24, 2019:

-  Continued brick installation on exterior walls
-  Excavation for fire protection tank
-  Begin setting structural steel






St. Francis Elementary School

Anticipated Substantial Completion (of the building) – January 2020

Completed for Week Ending May 17, 2019:

-  Set structural steel in area B
-  Continued footing and foundation for classroom addition exterior walls
-  Continued selective demolition of areas B & D as rooms become available
-  Continued mechanical, electrical, plumbing rough-ins

Progress Planned for Week Ending May 24, 2019:

-  Completed structural steel setting in area B
-  Completed footing and foundation for classroom addition for interior columns
-  Completed backfilling exterior walls
-  Continued selective demolition of areas B & D as rooms become available
-  Continued mechanical, electrical, plumbing rough-ins

Weekly Progress Report

St. Francis Middle School

Anticipated Substantial Completion – November 30, 2020

Completed for Week Ending May 17, 2019:

- ☒ Continuation of demolition in old cafeteria and adjacent work room area
- ☒ Selective classroom demolition in vacant rooms of area E
- ☒ Structural steel placement in Area A
- ☒ Begin interior masonry in Area A

Progress Planned for Week Ending May 24, 2019:

- ☒ Continuation of demolition in old cafeteria and adjacent work room area
- ☒ Continued masonry in Area A
- ☒ Finalize selective demolition in Area A
- ☒ Continued selective demolition in Area E vacant classrooms

St. Francis High School

Anticipated Substantial Completion – August 21, 2020

Completed for Week Ending May 17, 2019:

- ☒ Perform saw cutting concrete floors in locker room
- ☒ Begin mechanical, electrical rough-ins for classrooms in area J
- ☒ Continued demolition in locker rooms (area D)

Progress Planned for Week Ending May 24, 2019:

- ☒ Concrete floor removal from saw cutting in locker rooms
- ☒ Heavy equipment arrival onsite for fitness addition excavation
- ☒ Continued mechanical and electrical rough in in Area J classrooms

St. Francis Learning Center

Anticipated Substantial Completion – August 16, 2019

Completed for Week Ending May 17, 2019:

- ☒ Contractor submittals underway
- ☒ Contractor onsite verifications

Progress Planned for Week Ending May 24, 2019:

- ☒ Construction kick off meeting
- ☒ Continued contractor submittals

Weekly Progress Report

Progress Photos

Progress Photo: SFES Area B Demo



Progress Photo: SFES bus entry addition structural steel.



Progress Photo: SFES Classroom addition foundation wall progress



Progress Photo: EBES Classroom addition pre weather barrier.



Weekly Progress Report

Progress Photo: EBES weather barrier progress.



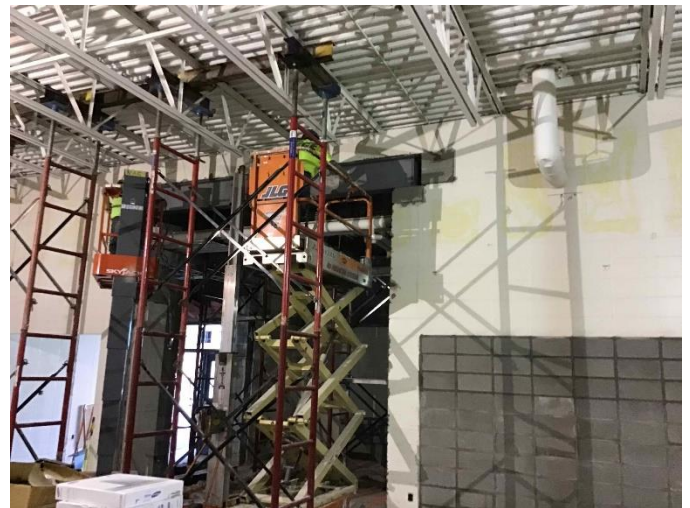
Progress Photo: SFMS Area A kitchen demo progress.



Progress Photo: EBES classroom addition exterior wall brick progress.



Progress Photo: SFMS Area A structural steel for new band room.



Weekly Progress Report

Progress Photo: SFMS Area A interior masonry install in new band room.



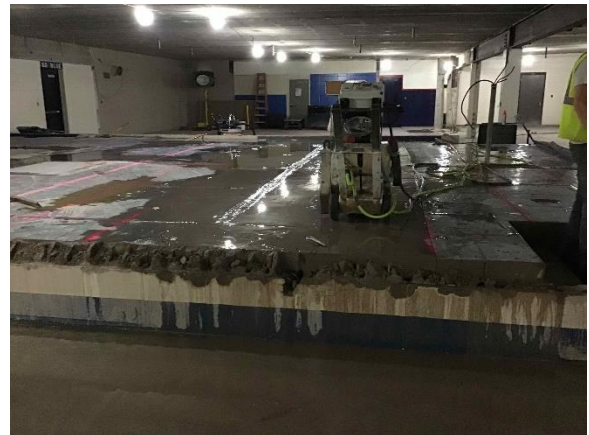
Progress Photo: SFHS Area C Locker Room floor cutting layout.



Progress Photo: SFHS Area C Locker Room demo progress.



Progress Photo: SFHS Area C Locker Room floor cutting progress.



End of Report