

Group 7

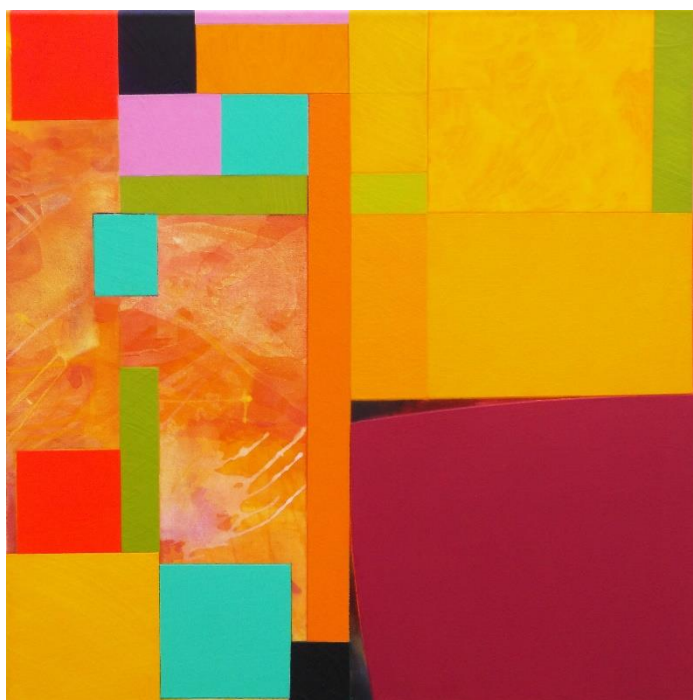
Atkinson Gallery, Millfield

Monday 2 September – Saturday 12 October 2019

Private View: Monday 2 September, 7-9pm

Group 7 is a group of Dorset based artists whose work covers a range of disciplines including printmaking, painting and drawing. Each with a distinctive style their work is united by the common use of bold and vibrant colours and strong mark making which feature across all the artists' work.

A number of the works have been created specifically for this exhibition ensuring the art on display covers a range of the most contemporary works produced by the group. Group 7 is made up of artists, Bonnie Brown, Martyn Brewster, Fran Donovan, Peter Symons, Ursula Leach, Michelle Griffiths and Brian Bishop.



Brian Bishop - Ko-Soe, 2015

FURTHER INFORMATION ON EXHIBITONS CAN BE OBTAINED FROM:

atkinsongallery@millfieldschool.com

www.atkinsongallery.co.uk

t. 01458 444322

www.facebook.com/atkinsongallery.co.uk

@galleryatkinson



MILLFIELD

Andrew Hardwick RWA

Atkinson Gallery, Millfield

Monday 4 November – Saturday 7 December 2019

Private View: Monday 4 November, 7-9pm



Andrew Hardwick is a Bristol based artist and a Royal West of England Academician. His studio is based on a farm where the River Severn turns into the sea; a landscape surrounded by industry and new housing estates. Hardwick's paintings give us a narrative of this landscape which he recalls from childhood explorations and adult observation, communicated to the viewer through layers of board, canvas, netting, wire and various paints supported by battens, which offer a purposely warped structure to the work which is not confined by the rectangle format.

His works protrude and recess, creating an undulating surface with gouged out negative spaces and artefacts embedded in the surface. Through his paintings Hardwick aims to give the viewer an experience of the landscape, to evoke emotion and a tangible reality in its raw form. His large-scale diptychs and triptychs will draw you away from the white space of the gallery wall and into their complex surfaces and layers.

FURTHER INFORMATION ON EXHIBITONS CAN BE OBTAINED FROM:

atkinsongallery@millfieldschool.com

www.atkinsongallery.co.uk

t. 01458 444322

www.facebook.com/atkinsongallery.co.uk

@galleryatkinson



MILLFIELD