

## **Press Release**

# **MA & Other Post Graduates 2015**

**Atkinson Gallery, Millfield**

**23 February – 28 March**

*Private View: Monday 23 February, 7-9pm*



*Sarah Smith, Elsewhere*

Proudly maintaining its ethos of promoting the next generation of artists, the **Atkinson Gallery** presents the annual **MA & Other Post Graduates** contemporary art show. Showcasing the work of students who express particularly fresh, innovative ideas, the exhibition reflects the talent and wide range of work being produced in art schools today.

The 2015 **MA & Other Post Graduates** show promises to be as exciting and diverse as previous years, with artists having been selected from 10 of the top art universities around the country. A



*Andy Mellors, a tale told by an idiot*

celebration of contemporary art, this exhibition provides the public with a unique opportunity to see current work in painting, photography, design, printmaking and sculpture.

**Andy Mellors'** installation addresses the diversity of calendar systems. Through the representation of patterns of daylight across a local year, measured in local time the work celebrates his own and other people's cultures. Each object is constructed from laser cut plywood rings. Each ring represents a day in the year for the location chosen and the diameter of the ring is related to the number of hours between sunrise and sunset, as measured in the time system for that location. The locations are the capital cities of countries that use different calendar systems. The objects are suspended so that equivalent days are at the same height. The title, which comes from Macbeth's last soliloquy, recognises the complexity of calendrical comparisons and the fact that the artist has only scratched the surface.

Deb Catesby's paintings bring the landscape alive through a rich palette of strong colours and heavy impasto which imbues the surface of the work with a sense of movement. She is one of the few artists in the show who represents a more traditional medium.



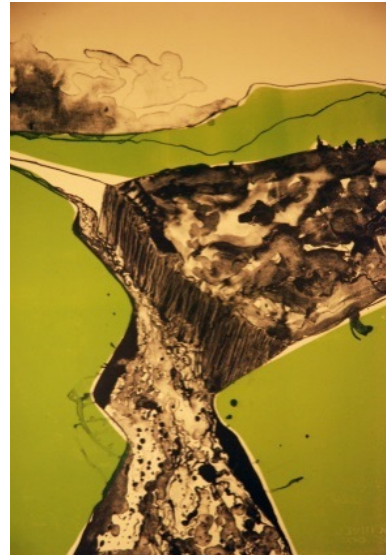
*Deb Catesby, Out of Eden I*



Kelly Hayes, *Ou-topos*

Using an interesting technique of printing her photographs onto aluminium, **Kelly Hayes** has been selected to exhibit from her series '*Ou-topos*'. Her work has been previously shown in *Northern Graduates 2014*, Curwen Gallery, London.

**Amanda Botha** from Aberystwyth University is represented in the show by two lithographs with monoprint from her series *Journey of Water and Time*.



Amanda Botha, *Journey of Water and Time*

Photographer **Sarah Smith** explains her series '*Displaced*':

*A series of still life images considers the last remaining objects to be removed from a home and the traces left behind after more than fifty years in residence. 'Displaced' provokes a subtle emotional contortion, igniting a memory or prompting the reconstruction of a memory from a long since abandoned childhood.*

The haunting image of a yellow bird is taken from her series '*Elsewhere*', of which the artist states: *It is within this infinite space of elsewhere that this series of images is located. The implicit silence of experiencing such immensity, through an endless sea or a vast landscape, captures our imagination and fuels our fantasy, allowing us to contemplate our own fleeting mortality.*



Sarah Smith, *Displaced (Listen)*

*Art Schools participating:*

*Aberystwyth University  
University of Gloucestershire  
Lincoln University  
Slade School of Fine Art*

*Brighton University  
UCLAN (Lancashire)  
University of Norwich*

*Falmouth University  
University of Leeds  
University of Portsmouth*

FURTHER INFORMATION ON THE EXHIBITION CAN BE OBTAINED FROM:

[atkinsongallery@millfieldschool.com](mailto:atkinsongallery@millfieldschool.com)

[www.atkinsongallery.co.uk](http://www.atkinsongallery.co.uk)

t. 01458 444322