

# Buffalo Creek Elementary & Treasure Forest Elementary School Renovations

## SBISD Board Workshop Meeting

# MEETING AGENDA

- + Welcome and Introductions
- + Summary: Project Advisory Team Meetings
- + Scheduled Scope of Work
- + Final Design:
  - Buffalo Creek Elementary School
  - Treasure Forest Elementary School

# PROJECT DESCRIPTION

- + Our charge is to bring the Buffalo Creek Elementary School and Treasure Forest Elementary School campuses as close to current district standards as possible and to approach upgrades to the campuses in a way that will serve SBISD and Buffalo Creek and Treasure Forest communities for the next twenty-years.
- + The purpose of our fact finding investigations, project advisory team meetings and visioning sessions was to pinpoint design goals and priorities.

# PROJECT ADVISORY TEAM CHARGE

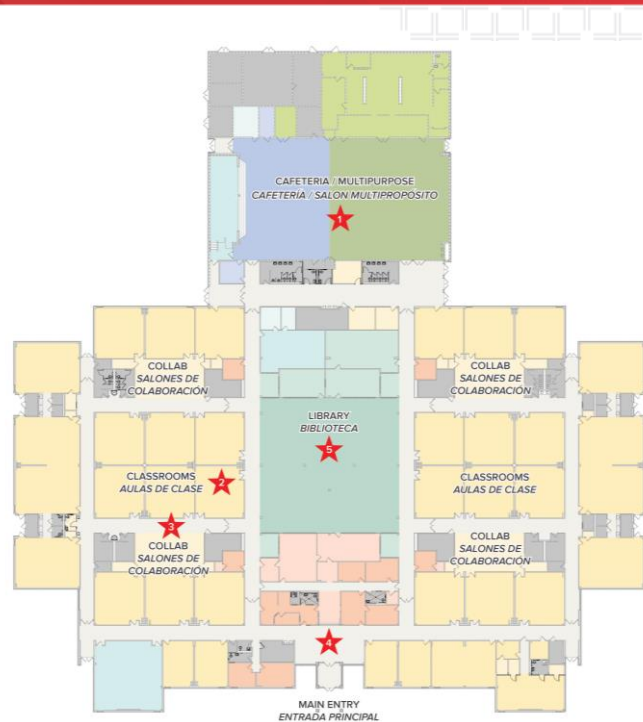
- + **Project Advisory Team (PAT)** – is a select group of parents, community members, school staff, SBISD personnel and Bond Committee liaison.
  - Each Project Advisory Team's (PAT) members are charged with providing input into planning and design development for their school's renovation project in the 2017 Bond Program.
  - The PAT works collaboratively and cooperatively with the architect and SBISD Project Manager to conceptualize, develop and refine the project's final goals and design.
  - The PAT met in a series of four meetings beginning in September 2018 and completing in November 2018.
  - The PAT reached its recommendations through consensus on a variety of proposed design areas.

# **SUMMARY: PAT MEETINGS**

# BUFFALO CREEK ELEMENTARY PAT MEETING #1 SEPTEMBER 11, 2018

## AGENDA

- School Tour
- Discuss list of initial goals gathered during the fact-finding meetings
- Presentation of initial floor plan studies
- Develop a list of renovation priorities

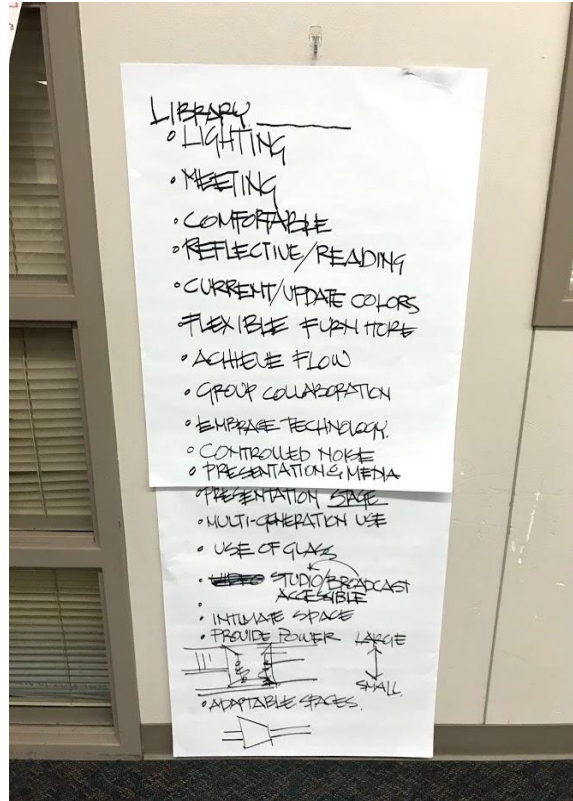




# BUFFALO CREEK ELEMENTARY PAT MEETING #2 SEPTEMBER 25, 2018

## AGENDA

- Examine District Standards
- Rank priorities from previous PAT Meeting
- Design Style Survey
- Design Charrette and Floor Plan Sketches



# BUFFALO CREEK ELEMENTARY PAT MEETING #3 OCTOBER 16, 2018

## AGENDA

- Review of Design Charrette Ideas
- Review Commonalities Between Charrettes and Initial Design Direction
- Preliminary Graphic Concepts for Collaboration Spaces
- Selection of Initial Colors and Materials

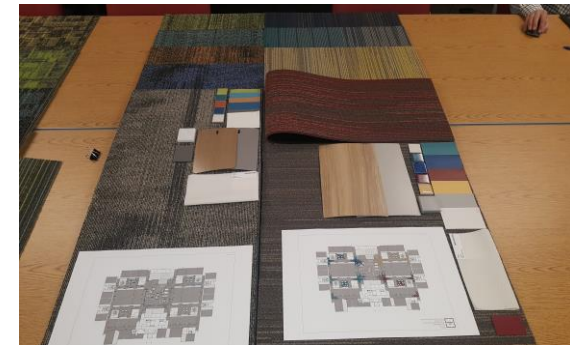




# BUFFALO CREEK ELEMENTARY PAT MEETING #4 NOVEMBER 14, 2018

## AGENDA

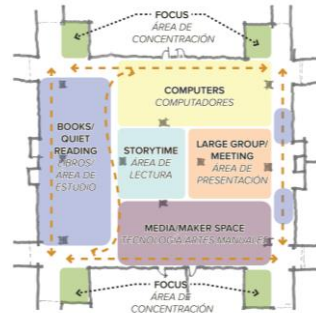
- Review Design Direction
- Present Final Floor Plans
- Present Final Renderings



# TREASURE FOREST ELEMENTARY PAT MEETING #1 SEPTEMBER 13, 2018

## AGENDA

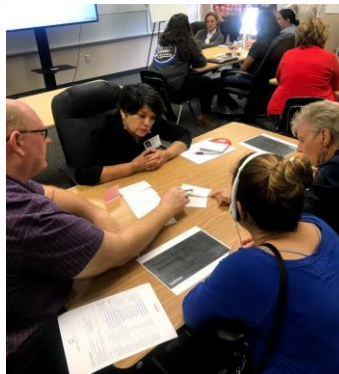
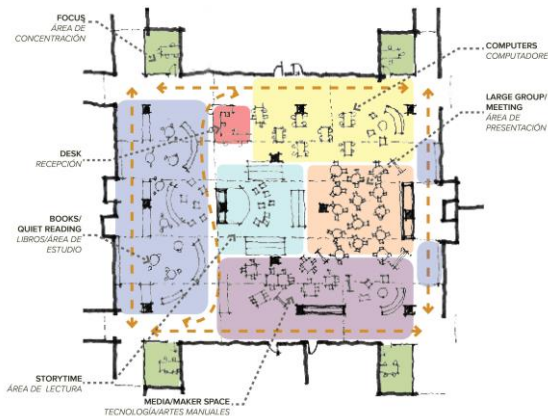
- Discuss existing building and how the facility operates as a learning environment
- Discuss list of initial goals gathered during the fact-finding meetings
- Presentation of initial floor plan studies
- Develop a list of renovation priorities



# TREASURE FOREST ELEMENTARY PAT MEETING #2 SEPTEMBER 27, 2018

## AGENDA

- Examine District Standards
- Rank priorities from previous PAT Meeting
- Design Style Survey
- Design Charrette and Floor Plan Sketches



LIBRARY FEATURES

1. SPACE TO READ,
2. FLEXIBLE SEATING
3. BUILT-IN.
  - NICHES/ NOOKS
  - PLATFORMS/ TREE HOUSE
4. DIVISION OF SPACES
5. VISIBILITY'S
6. TECHNOLOGY INTEGRATION
7. MAKER SPACE

# TREASURE FOREST ELEMENTARY PAT MEETING #3 OCTOBER 25, 2018

## AGENDA

- Review of Design Charrette Ideas
- Review Commonalities Between Charrettes and Initial Design Direction
- Preliminary Graphic Concepts for Collaboration Spaces
- Selection of Initial Colors and Materials

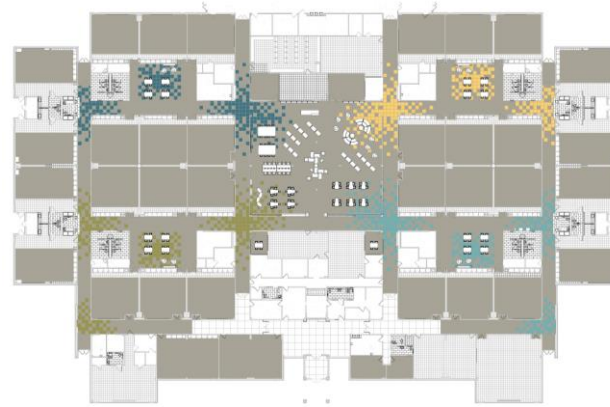




# TREASURE FOREST ELEMENTARY PAT MEETING #4 NOVEMBER 4, 2018

## AGENDA

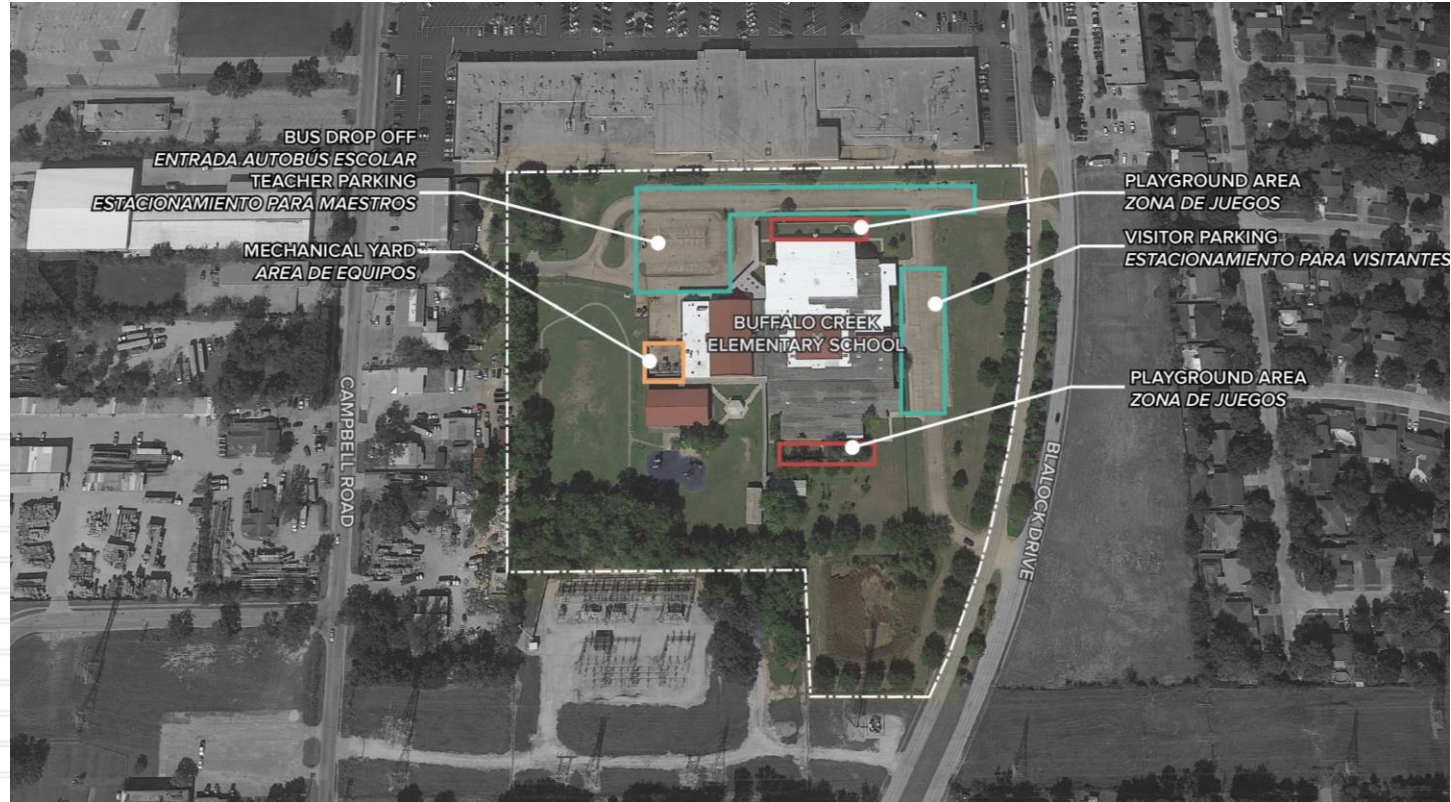
- Review Design Direction
- Present Final Floor Plans
- Present Final Renderings

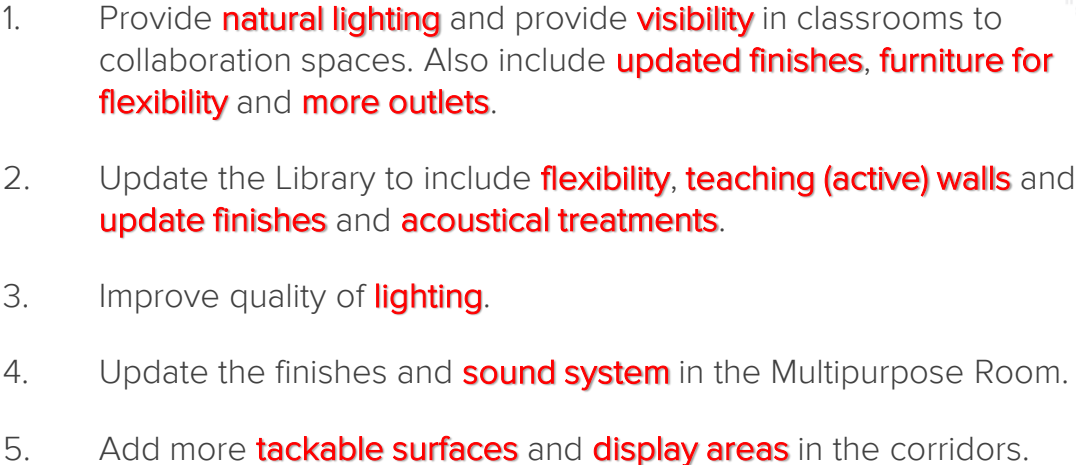


# **DESIGN RECOMMENDATIONS: BUFFALO CREEK ELEMENTARY SCHOOL**



# BUFFALO CREEK ELEMENTARY SITE MAP





# SCOPE OF WORK – BUFFALO CREEK ELEMENTARY SCHOOL

2019

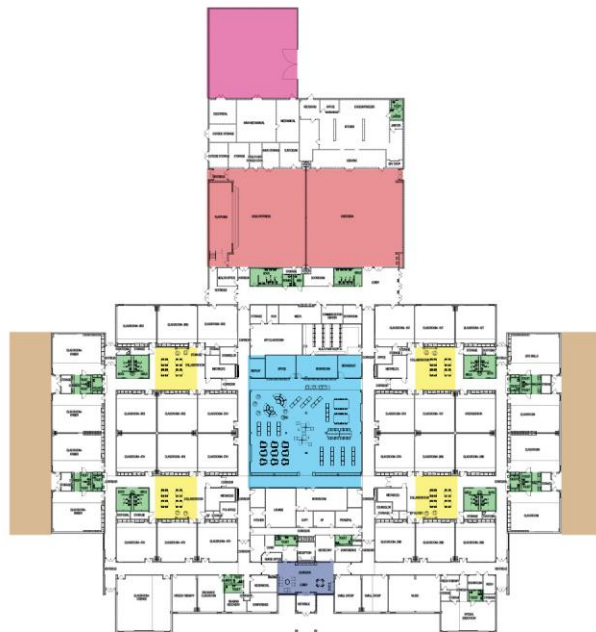
Feb. — April — June — Aug. — Oct. — Dec.

2020

Feb. — April — June — Aug. — Oct. — Dec.

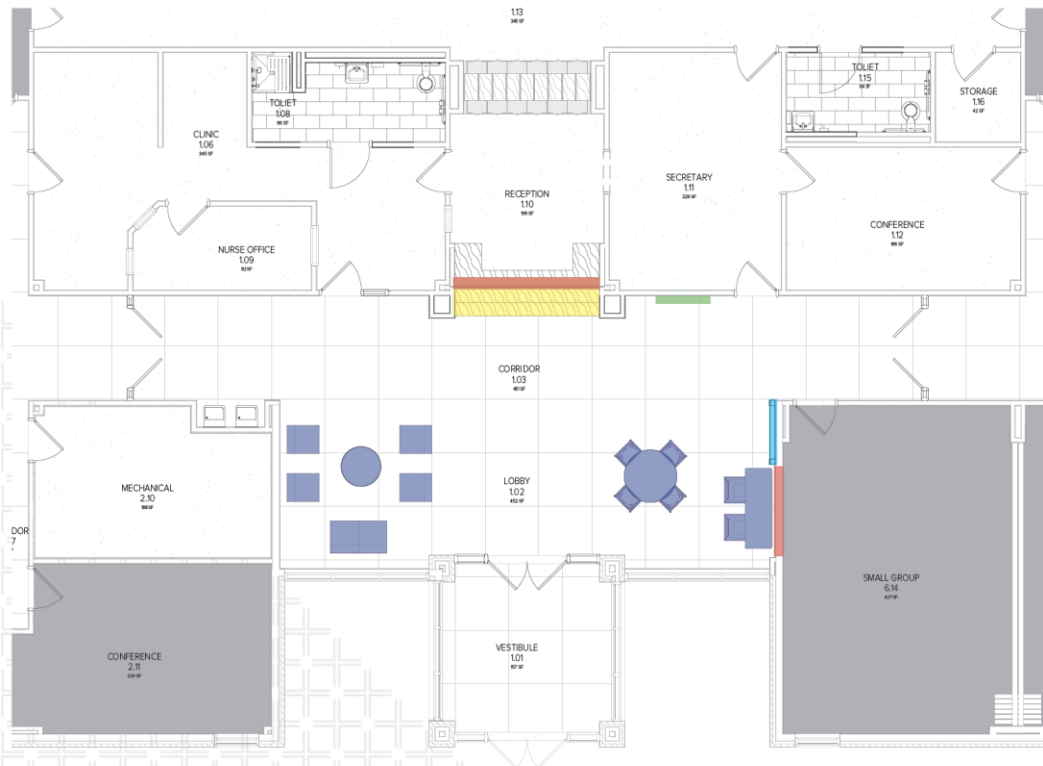
June 2019

August 2020



- Skylight Replacement & Library Renovation
- Clerestory Windows & Collaboration Renovation
- Restroom Renovation
- Cafeteria/Gym Renovation
- Entry Renovation
- Mechanical/HVAC Improvements
- Kindergarten Playground Equipment Replacement
- + Roof Replacement
- + Technology Improvements
- + Replace Existing Lay-In Ceilings
- + Site Improvements/Detention Pond

# BUFFALO CREEK ELEMENTARY FRONT ENTRY



- Tackable Wall/Display Area
- Graphic Wall
- New Reception Counter
- Digital Display
- Flexible Furniture



# BUFFALO CREEK ELEMENTARY FRONT ENTRY

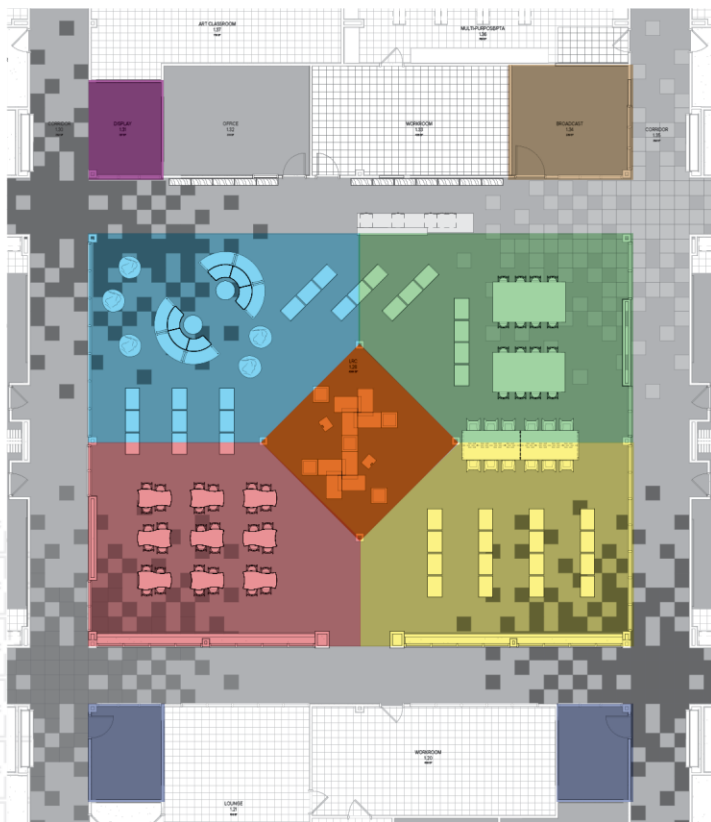


# BUFFALO CREEK ELEMENTARY FLOOR PATTERN





# BUFFALO CREEK ELEMENTARY LIBRARY

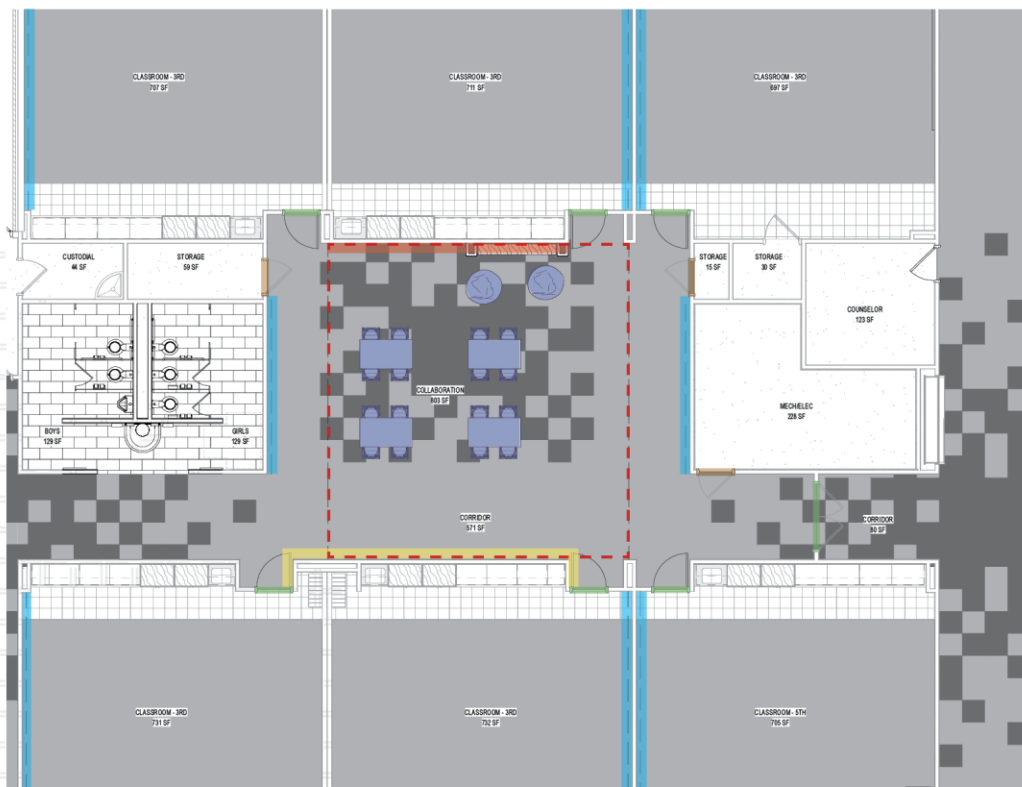


- Reading Zone
- Meeting Zone
- Stacks Zone
- Maker Space/Flexible Zone
- Flexible Seating Zone**
- Small Group Flex Space
- Broadcast Studio
- Art Display

# BUFFALO CREEK ELEMENTARY LIBRARY



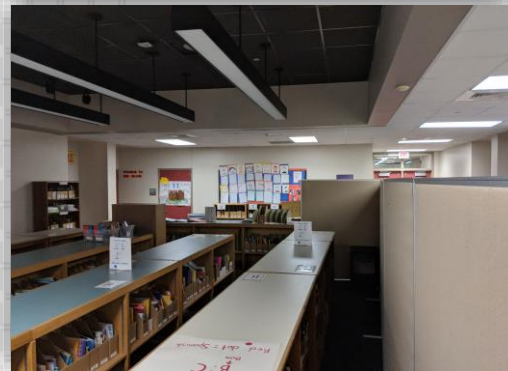
# BUFFALO CREEK ELEMENTARY COLLABORATION



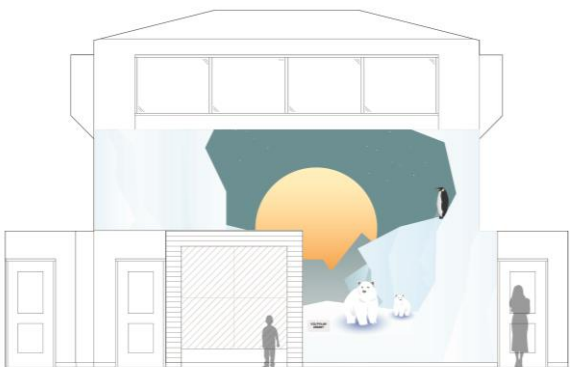
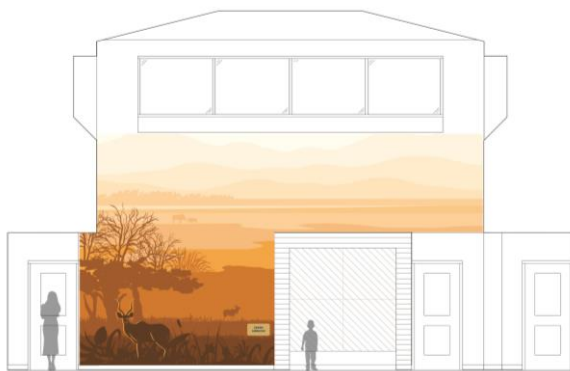
- Active Walls w/ Magnetic Markable Surface
- Graphic Wall
- Accent Paint Wall
- New Door Panel w/ Glazing
- New Door Panel
- Flexible Furniture
- Extents of New Clerestory



# BUFFALO CREEK ELEMENTARY COLLABORATION



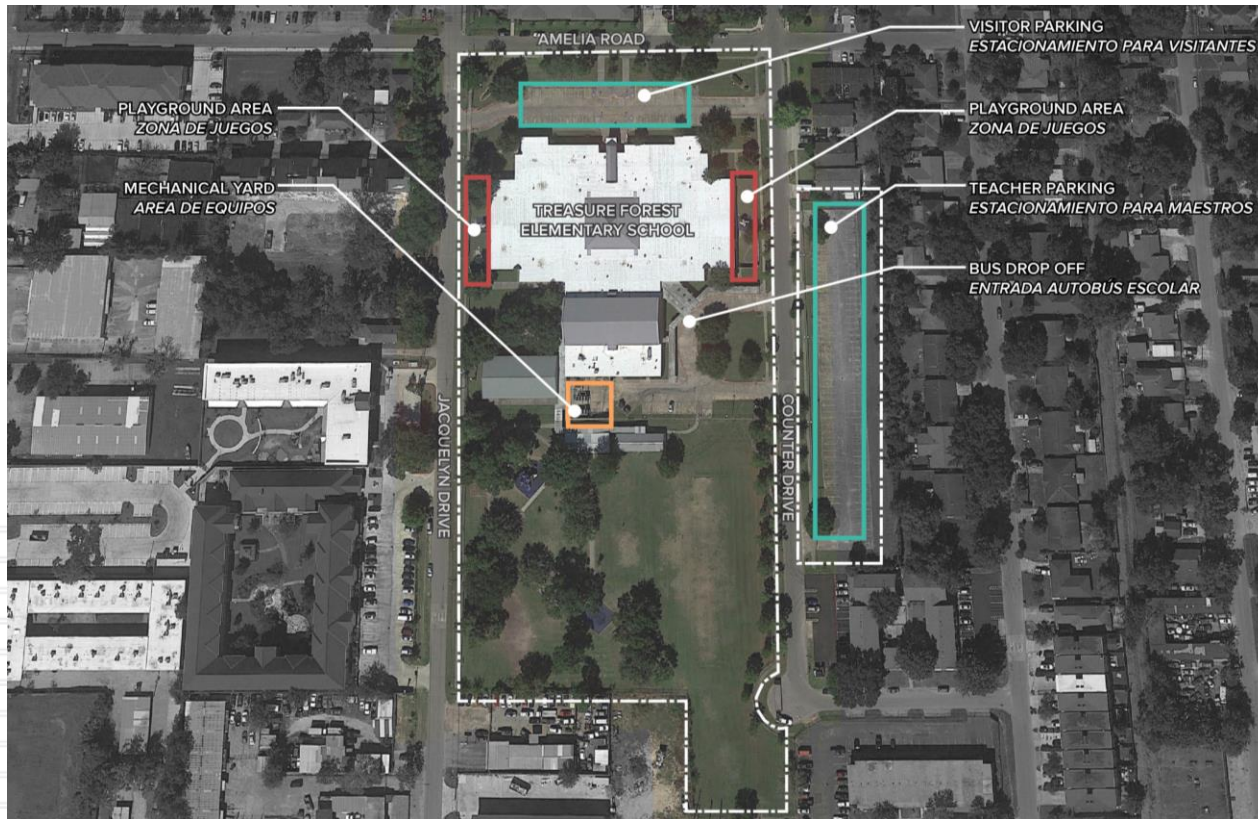
# BUFFALO CREEK ELEMENTARY GRAPHICS (BIOMES)



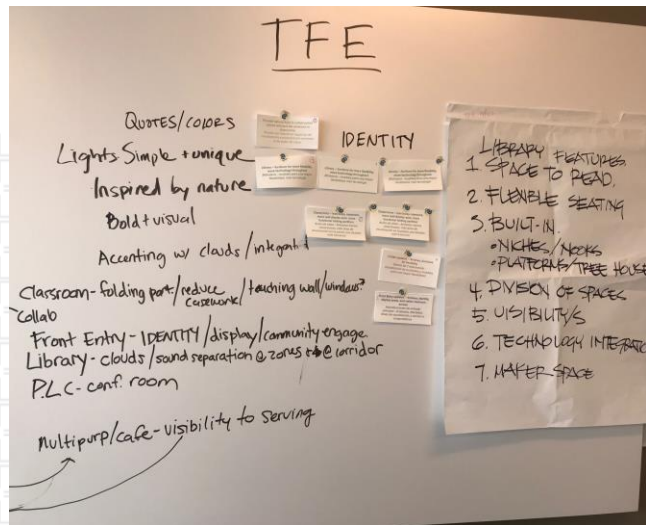
# **DESIGN RECOMMENDATIONS: TREASURE FOREST ELEMENTARY SCHOOL**



# TREASURE FOREST ELEMENTARY SITE MAP



# TREASURE FOREST ELEMENTARY PAT DESIGN PRIORITIES



1. Provide **natural lighting** and **windows** in collaboration spaces.
2. Update the Library with **flexibility** and more **technology**.
3. Add more **functionality** to walls in the classrooms.
4. Update **finishes** and **furniture for flexibility** in the collaboration spaces.
5. Update **finishes, identity, display areas**, and **visitor restroom access** *in front entry*.

# SCOPE OF WORK – TREASURE FOREST ELEMENTARY SCHOOL

2019

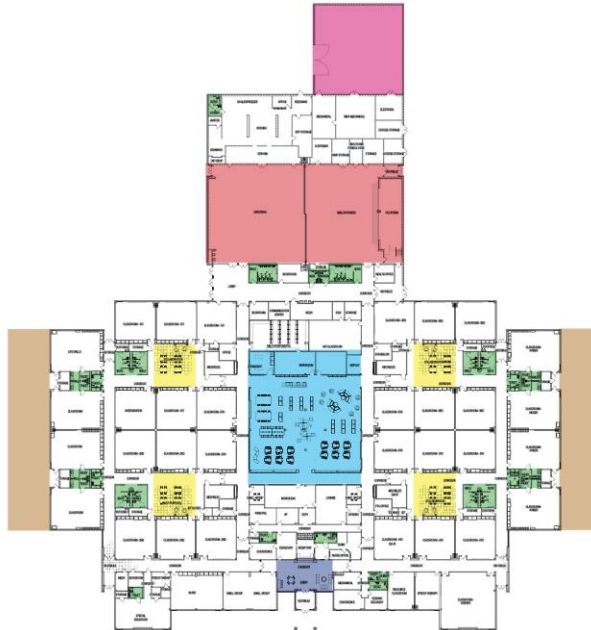
Feb. — April — June — Aug. — Oct. — Dec.

2020

Feb. — April — June — Aug. — Oct. — Dec.

June 2019

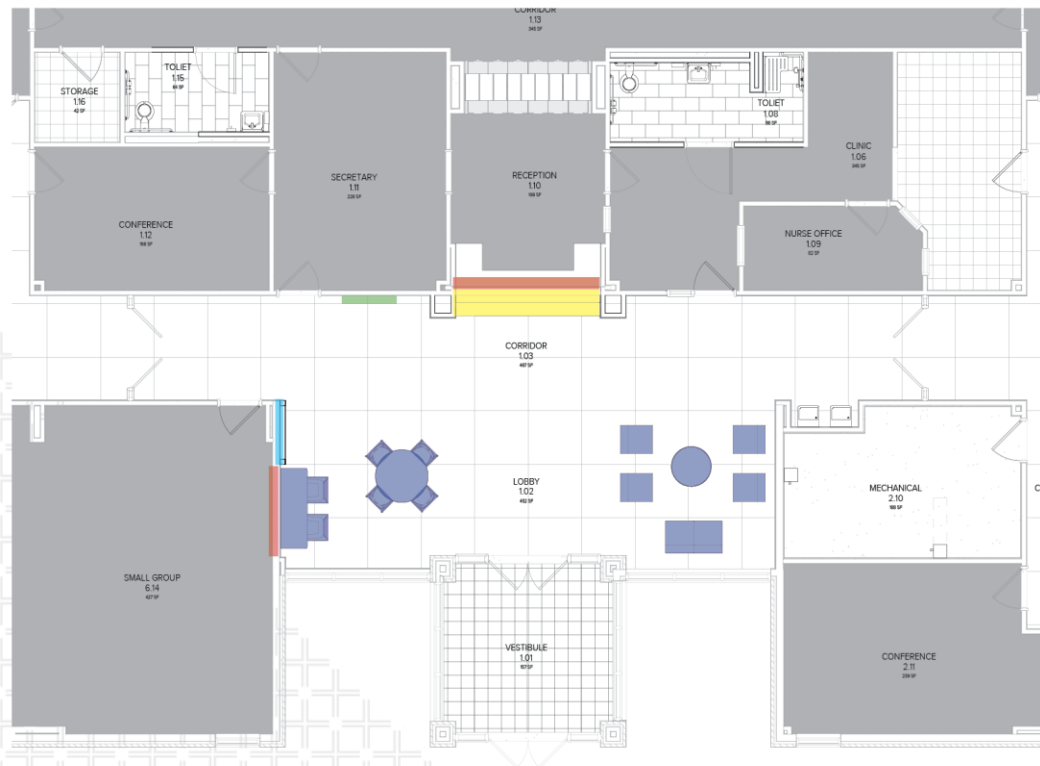
August 2020



- Skylight Replacement & Library Renovation
- Clerestory Windows & Collaboration Renovation
- Restroom Renovation
- Cafeteria/Gym Renovation
- Entry Renovation
- Mechanical/HVAC Improvements
- Kindergarten Playground Equipment Replacement

- + Roof Replacement
- + Technology Improvements
- + Replace Existing Lay-In Ceilings
- + Site Improvements/Teacher's Parking Lot

# TREASURE FOREST ELEMENTARY FRONT ENTRY



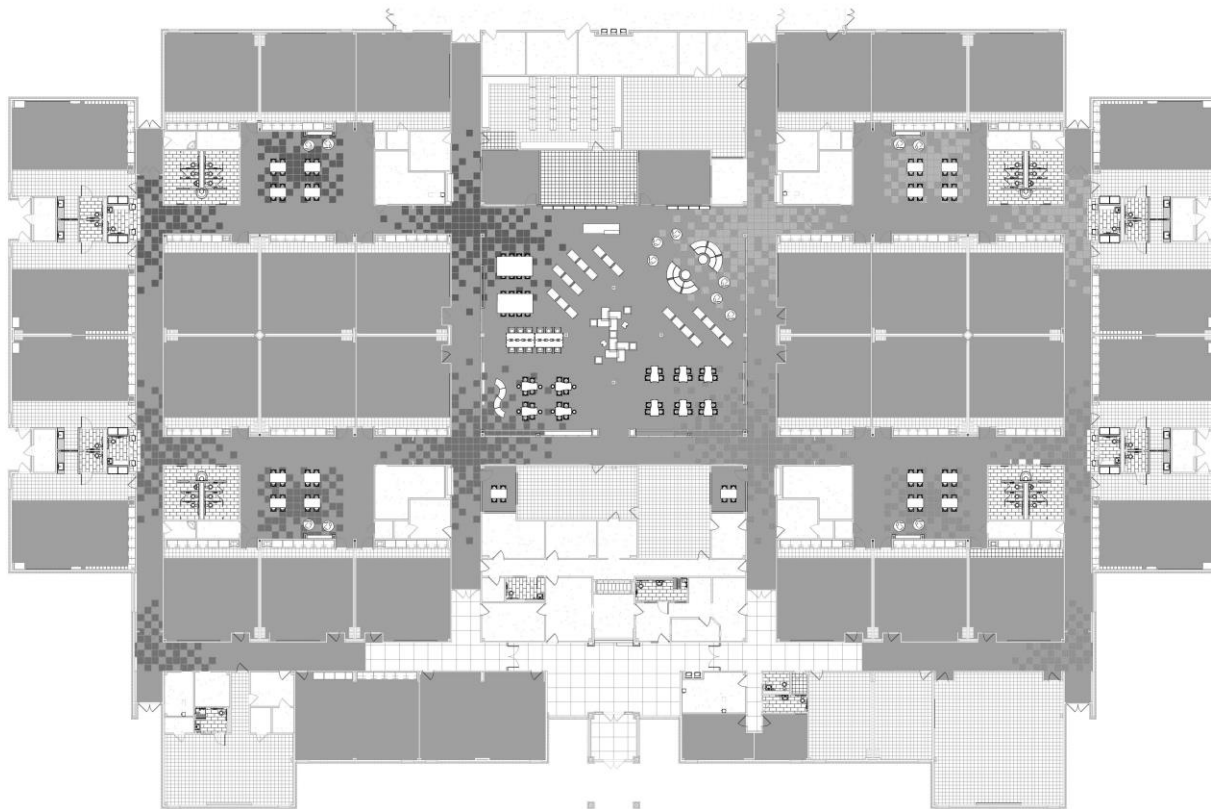
- Tackable Wall/Display Area
- Graphic Wall
- New Reception Counter
- Digital Display
- Flexible Furniture



# TREASURE FOREST ELEMENTARY FRONT ENTRY

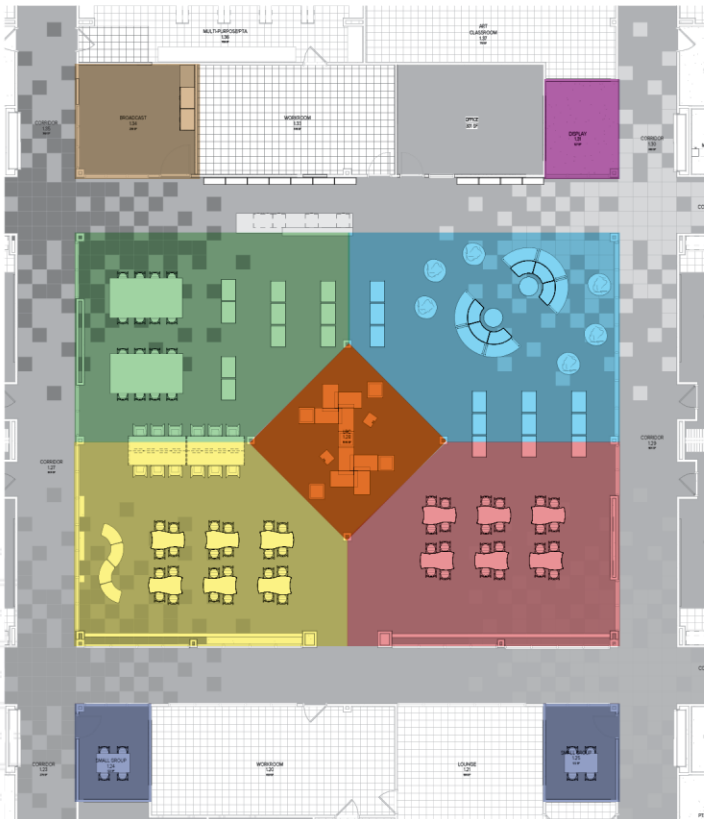


# TREASURE FOREST ELEMENTARY FLOOR PATTERN





# TREASURE FOREST ELEMENTARY LIBRARY



- Reading Zone
- Meeting Zone
- Teaching Zone
- Maker Space/Flexible Zone
- Flexible Seating Zone
- Small Group Flex Space
- Broadcast Studio
- Art Display

# TREASURE FOREST ELEMENTARY LIBRARY







# TREASURE FOREST ELEMENTARY COLLABORATION



# TREASURE FOREST ELEMENTARY GRAPHICS (WORDLE)





# DISCUSSION