

Sydenham School

OPEN DAYS

2019

Wednesday 18th September	9.30am
Tuesday 24th September	9.30am
Saturday 28th September	9.30am
Friday 4th October	9.30am



www.sydenham.lewisham.sch.uk
@sydenhamschool



Welcome



Gloria Lowe
Headteacher

“We are what we repeatedly do,
excellence then, is not an act, but a
habit”. (Aristotle)

Provision- Our School Facilities

- £24 million pound investment in new and refurbished facilities (2016)



- Superb outside spaces
- Excellent teaching spaces and specialist teaching rooms



Science and Design and Technology

- 10 Science labs
- 6 Design and Technology rooms
- 4 specialist Computer rooms.

The Performing Arts

- 2 Drama studios and a fully sprung Dance Studio
- An Activity (Gym) suite
- A full sized Sports Hall and an outside Multi Use Games Area
- Bespoke Art rooms, a kiln room and a dark room.



Other Facilities

- A fantastic library
- A Business Studies suite
- A Media suite equipped with apple macs and industry standard filming and recording equipment
- A Music recording studio

The 6th Form is housed on its own floor, complete with study and social spaces and specialist teaching rooms as well as a contemporary roof terrace.



The external facilities





Year 7 Courtyard



Amphitheatre



Science Pond



On safeguarding.....

- 'Leaders have cultivated an effective school-wide understanding of safeguarding that they refer to as the 'golden thread....'
- 'The school's focus upon supporting pupils' emotional and mental health is strong....'





Our ambitions for your child

Year 13 destinations last year included:

University of Cambridge
University of Cambridge
University of Oxford
University of Birmingham
University of Bristol
Cardiff University
University of Edinburgh
University of Edinburgh
University of Edinburgh
King's College London
University of Leeds
University of Nottingham
Queen Mary University of London
Queen Mary University of London
Royal Veterinary College University of London
University of Sheffield
SOAS University of London

Human, Social and Political Sciences
Human, Social and Political Sciences
Geography
History
Politics and International Relations
Journalism, Media and English Literature
Astrophysics
Physics
Biological Sciences (Genetics)
Medicine
Biology
Nursing
Chemical Engineering
Computer Science
Veterinary Medicine

Sociology with Criminology
History of Art





A Level Results

- 20% A* Grades
- 51% A*-B Grades
- 77% A*-C Grades
- 99% Pass Rate
- BTEC Results
- 65% Distinction/Distinction* Grades
- 94% Merit Grades or better













2019 Key Stage 4 Outcomes

Attainment 8 = 51 points

2018 National Average = 46.5 points

2018 Lewisham Average = 44.9 points

English Baccalaureate Average Grade = 4.62

2018 National Average = 4.04

2018 Lewisham Average = 3.99

**Progress 8 2018 (2019 not yet released by DfE) =
+0.22 (Above Average)**

*Sydenham School has had consistently positive
Progress 8 scores over the past four years.*

High Performance Learning

‘In HPL schools, students develop not only academic competence but also the values, attitudes and attributes that will serve them well in higher education, the workplace and their life’.



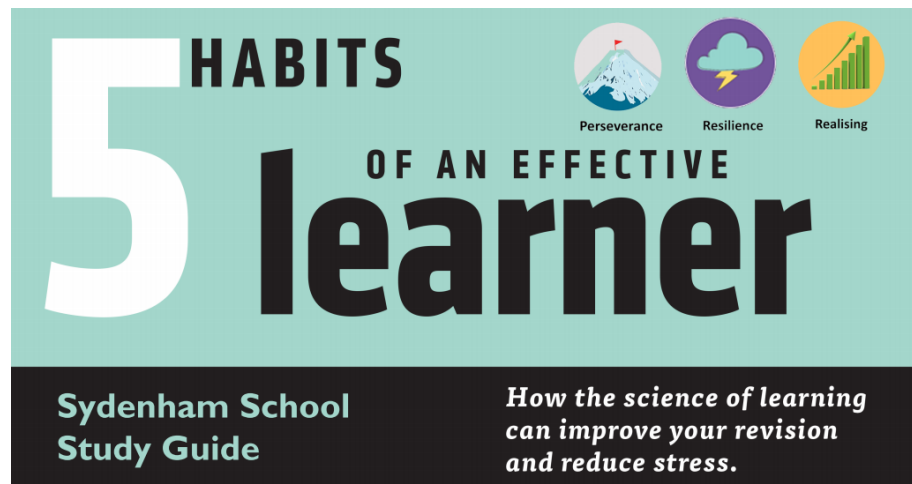
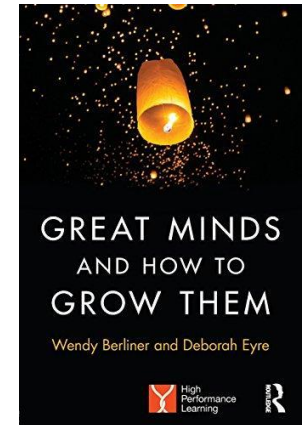
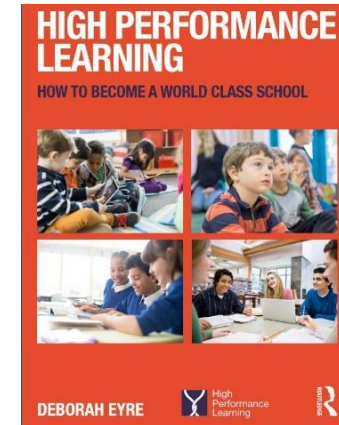


High Performance Learning



- Intelligence isn't fixed.
- High performers are made not born.

‘Great Minds and How to Grow Them’
by Wendy Berliner and Deborah Eyre





Rigorous, Broad and Balanced Curriculum

Ebacc Subjects:	Broad and Balanced Curriculum:
English	Religion, Philosophy and Ethics
Mathematics	Art
Science	Textiles
History	Physical Education
Geography	Personal, Social and Health Education
French, German or Spanish	Design Technology
Computing	Food Technology
Latin	Drama
	Dance



The Curriculum Beyond the Classroom



Concern for
Society





BATTLE OF 8 THE BANDS

12 BANDS BATTLE IT OUT. **DRAMA STUDIO. 18 JUL.**

2 ROUNDS. 2 SONGS. **7pm - 9.30pm.**

Botb

Child £1 | Adult £3 | Family £6

LIMBS & SALT
JOINT WINNERS OF BOTB7 2017

FOREVER

PRESENTED BY
Sydenham School

7PM

**W
I
N
T
E
R**

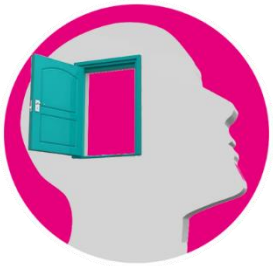
CONCERT

**06
DEC**

Main School Hall







Open Minded



Concern for
Society



Concern for





Concern for
Society



Resilience



Risk-Taking

A row of seven grey silhouettes of runners in various stages of a running stride, positioned above the title text.

1 MILE RUN

Held one morning per week for
all Year 7 and 8 students

*Research carried out by the
Universities of Edinburgh and
Stirling has found that 15
minutes of self-paced exercise
can significantly improve a
child's mood, attention and
memory – enhancing their
ability to learn.*

**“The Mile Run has made me
more active on a school morning
and makes me more awake and
energetic for my lessons.”**

Dare to be Challenged



High Performance Learning
Deliberate Practice Project



102 Years of Educating Young Women



“We are what we repeatedly
do, excellence then, is not an act, but
a habit”. (Aristotle)

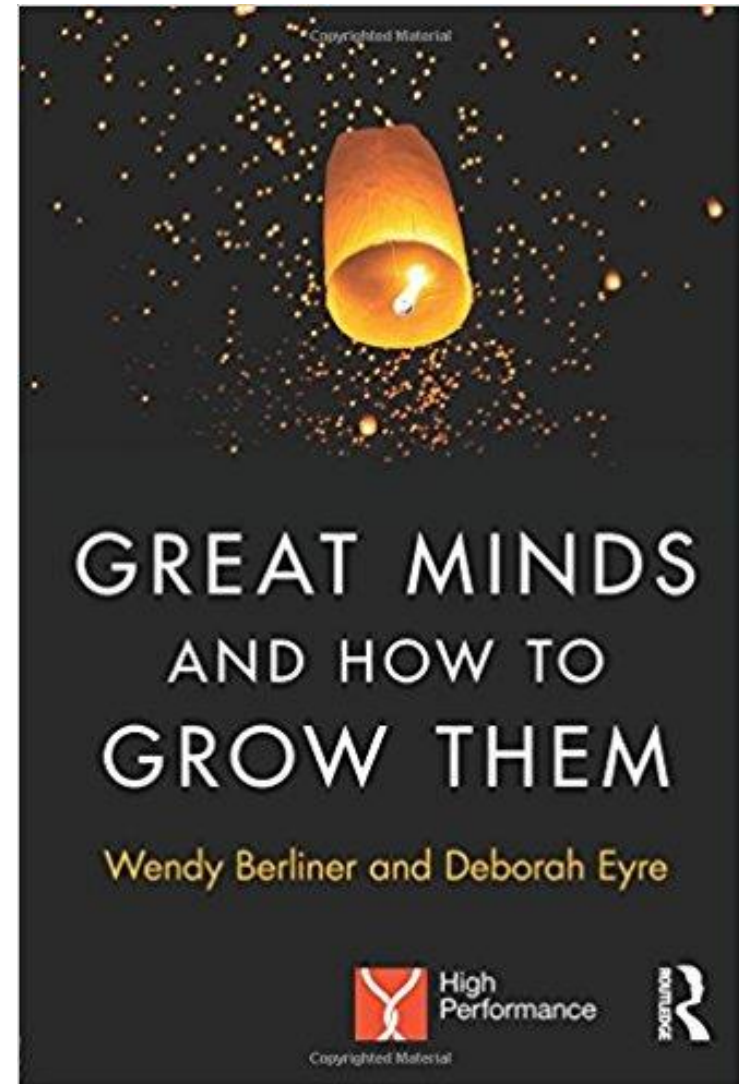
Supporting the Transition



Janet Emmanuel
Assistant Headteacher

Working in Partnership With Families

- ‘ Children don’t spend very much time, proportionately, in the classroom....teachers, no matter how good they are, rely to a significant extent on what goes on out of school in the child’s life if they are to succeed in helping a child fully develop their learning’.
- pp5- 6, Deborah Eyre and Wendy Berliner





What we do to support Year 7

- Tutor support and PSHE
- Phased introduction of homework
- Prefect System
- Step by Step and Inclusion Support
- Separate Key Stage 3 lunchtime
- Year 7 courtyard
- Library
- Assembly and tutor programme
- Approachable and supportive staff



YEAR 7 WELCOME PICNIC HORNIMAN GARDENS

behind the bandstand on the grass

1-2:30pm

SUN 22
SEPT

Please bring a picnic and join us!

Come and meet other
Year 7 families and be
welcomed into the
Sydenham School community.

Any questions please email
sydenhamschpta@gmail.com





Application Process

- Lewisham allocate the school place, not selective no test.
- Common application form
- Catchment area changes from year to year, we have students from all over and from different boroughs. last place offered under home to school distance was 1,751.02km
- If you would like your daughter to attend Sydenham put it down as first choice whatever borough you live in.
- Waiting list for those who do not get a place first time
- Primary school will provide you with details about the process