

High School Graduation to

Post-Secondary
Education to

WHAT??????



High School Graduation to

Post-Secondary
education to...

unemployment,
a job or
a fulfilling career?

All too often, students obtain a post-secondary education that is unrelated to employability or a viable income.



Texas Higher Education Misalignment at the Bachelor's Degree Level

Highest Paying 1 YR Post exit 2016 Bachelor's degree programs (CIP)	Most Graduates 2016 Bachelor degree programs (CIP)
1. Registered Nursing	1. Registered Nursing
2. Chemical Engineering	2. Multi-/Interdisciplinary Studies
3. Petroleum Engineering	3. Business Admin. & Management
4. Construction Eng. Technologies	4. Psychology, General
5. Electrical Engineering Techs	5. Biology, General
6. Computer/IT Administration	6. Health Ed. & Physical Fitness
7. Computer Science	7. Criminal Justice and Corrections
8. Computer Engineering	8. Accounting and Related Services
9. Electrical & Comm. Engineering	9. Financial Management
10. Civil Engineering	10. Liberal Arts & General Studies
11. Industrial Prod. Technologies	11. Marketing
12. Computer & Info. Sciences	12. Communication/Media Studies
13. Industrial Engineering	13. Mechanical Engineering

Student Debt: \$1.53+ trillion*



According to the U.S. Department of Education data, the ability to repay college loans depends more on whether a student graduates than on how much debt they are carrying or their major.

*Average new grad owes \$37,172

*44.2 million Americans with student loan debt

*Loan delinquency rate of 20% - 11% for Bachelor's completers

*Average monthly student loan payment (for borrower aged 20 to 30 years): \$393

*More than auto loans (\$1.1 trillion) or credit cards (\$911 billion)!!

Highest Earning Bachelor's Programs 2016 (4D CIP)

Bachelor's Graduates by Major (TX) (100+)	Grads	Earnings
1. Registered Nursing, Nursing Administration	10,453	\$67,318
2. Chemical Engineering	549	\$65,580
3. Petroleum Engineering	559	\$63,724
4. Construction Engineering Technologies	401	\$61,641
5. Electrical Engineering Technologies/Techs	142	\$57,070
6. Computer/IT Administration & Mgmt.	250	\$56,924
7. Computer Science	536	\$56,893
8. Computer Engineering	375	\$56,143
9. Electrical/Electronics & Comm. Engineering	1,214	\$55,869
10. Civil Engineering	819	\$54,266
11. Industrial Production Technologies	315	\$53,541
12. Computer & Information Sciences	1,880	\$53,406
13. Industrial Engineering	373	\$51,183
14. Computer Systems Analysis	192	\$50,950

Most Graduates: Bachelor's Programs 2016 (4D CIP)

Bachelor's Graduates by Major (TX)	Grads	Earnings
1. Registered Nursing, Nursing Administration	10,453	\$67,318
2. Multi-/Interdisciplinary Studies, Other	9,495	\$41,885
3. Business Administration, Mgmt./Operations	7,030	\$46,030
4. Psychology, General	6,140	\$25,623
5. Biology, General	5,438	\$23,420
6. Health and Physical Education/Fitness	5,001	\$25,103
7. Criminal Justice and Corrections	4,457	\$31,465
8. Accounting and Related Services	4,035	\$38,084
9. Finance & Financial Management Services	3,178	\$45,002
10. Liberal Arts, Humanities & General Studies	3,074	\$35,160
11. Marketing	2,834	\$37,566
12. Communication and Media Studies	2,513	\$29,685
13. Mechanical Engineering	2,065	\$49,639
14. English Language and Literature, General	2,061	\$29,166

What Becomes of Texas Psychology Graduates?

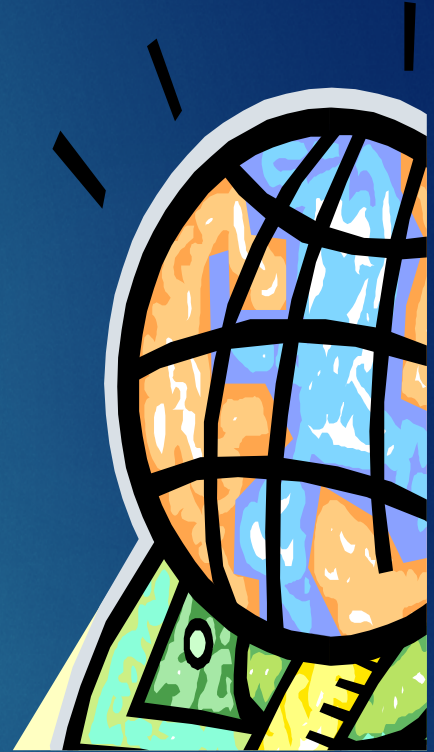
Occupational Title	Typical Education	PCT EMP
Counselors	Master's degree	7.7
Psychologists	Doctoral/Professional	6.3
Social Workers/Case Managers	Bachelor's degree	4.8
Elementary/MS Teachers	Bachelor's degree	4.1
Postsecondary Teachers	Doctoral/Professional	3.9
Misc. Therapists, Incl. Exercise Physiologists	Bachelor's degree	3.7
Misc. Managers, Incl. Funeral Service Mgrs.	Bachelor's degree	2.8
Registered Nurses	Bachelor's degree	2.7
Physicians And Surgeons	Doctoral/Professional	2.3
Secretaries/Admin Assistants	Some College, No Degree	2.2
Lawyers, Judges, Magistrates	Doctoral/Professional	2.1
Education Administrators	Master's degree	2.0
Human Resources Workers	Bachelor's degree	1.8
Medical & Health Services Managers	Bachelor's degree	1.7
Retail Salespersons	HS or GED	1.5

Highest Earning Associate's Programs 2016 (4D CIP)

Associate's Graduates by Major (TX) (50+)	Grads	Earnings
1. Fire Protection	243	\$67,261
2. Registered Nursing, Administration, Research	5,434	\$56,861
3. Electrical and Power Transmission Installers	128	\$56,639
4. Construction Engineering Technologies	80	\$56,110
5. Electromechanical & Instrumentation Techs	657	\$51,849
6. Quality Control & Safety Technologies	235	\$51,788
7. Physical Science Technologies/Technicians	1,029	\$48,209
8. Allied Health Diagnostic & Treatment Professions	2,282	\$43,190
9. Electrical Engineering Technologies	204	\$43,119
10. Industrial Production Technologies	264	\$41,724
11. Dental Support Services and Allied Professions	466	\$38,544
12. Drafting/Design Engineering Technologies	509	\$37,243
13. Heating, AC & Refrigeration Technologies	163	\$36,561
14. Health Services & Allied Health Sciences, Gen.	253	\$36,314

**High School Graduation to
post-secondary education
and a fulfilling career.**

How do students get there?



Questions to Consider When Exploring Careers PRIOR to Post-Secondary Decisions...



1. What careers relate to things I like to do?
 - <https://www.onetonline.org>
 - Naviance Career Cluster Finder & Interest Profiler
 - <https://TexasCareerCheck.com>
 - www.TexasGenuine.org
 - <https://www.16personalities.com>
2. What are the potential salaries of my careers of interest??
 - CareerOneStop.com
 - O*NetOnline.com (Wages & Employment section)
 - <https://TexasRealityCheck.com> Research careers by salary needed for desired lifestyles in Texas.
3. What is the job outlook??
 - O*NetOnline.org (Wages & Employment section)
4. How can I explore careers of interest prior to HS graduation??
5. What post-secondary education is needed to reach my career interest goals? What colleges or other post-secondary institutions provide the educational pathways for my career interests/goals?

CAREER CHAT!

After Graduation...

Then **What??** THIS??



Career Investigation
Information and Resources

or THIS????

Things to Consider When Exploring Careers:

1. What careers relate to your interests and what you love to do?
Career Interest Surveys [Naviance](#)
2. Salary potential. *Onetonline.org; [Naviance](#)*
3. Job outlook or job growth for favored careers. *Onetonline.org; [Naviance](#)*
4. Reaching my career goal: Where do I go? What colleges and universities provide education needed to reach career goals? What will it cost?
College research via college websites

Online Resources:

Career and Post-Secondary Research

-www.naviance.com

Career interest surveys, career information, colleges, college costs, scholarships and money, videos regarding careers and general interests and more.

-Texasgenuine.org

Career interest survey, career cluster information that provide specific career survey results. Includes salary range (in Texas) and education required with links to colleges providing post-secondary education in those areas. Links are also provided to Texas Reality Check, College for All Texans, Generation TX, Apply Texas and Financial Aid (FAFSA).

-www.onetonline.org

Comprehensive career information, including interest surveys, salary potential and job outlook by state and region.

-www.mynextmove.org

Also part of www.onetonline.org. Comprehensive career information, including interest surveys.

-www.careeronestop.org

Comprehensive career information, including interest surveys, post-secondary education and training required and colleges that provide those programs.

-<https://texascareercheck.com/>

A wealth of resources including an interest profiler survey, salary potential of your careers of interest (and many more) and projected job openings, access to information about post-secondary education, side-by-side school comparison feature, financial aid resources and much more!

-www.texasrealitycheck.com

A different approach to the interest surveys! In this survey, you will "buy stuff" for a sample month (car, housing, technology, entertainment, food, insurance, utilities, etc.). The cost for a year is determined. A list of careers with salaries that match is generated.

-www.16personalities.com

Personality style survey. Use the results to discover careers that relate to your personality style, along with other useful information.

- What are your ideas about careers in the future?
- Learn about SBISD career investigation opportunities through electives, and career prep internship programs. Plan ahead to free up space for more career focus electives and internships. (Summer school, SBISD Virtual Academy, Texas Tech ISD online HS courses)
- Participate in summer career camps (Universities, sports camps, etc., that offer exposure to your career fields of interest. Google summer career camps for many others.)
- Participate in summer jobs in career areas of interest
- Volunteer in career area businesses or industries that reflect your career interests.

Benefits of investigating careers while in high school (even earlier):

1. Find your career or career cluster focus
2. National professional certification opportunities
3. Early knowledge of education requirements to reach your career goal.
4. College selection process driven by your career focus.
5. Incorporate career focus experiences in college applications/essays.
6. Establish business and industry connections through networking
7. Learning how to learn... Learning where to turn... Learning where to earn.

What do career providers want?

Research online the career / employment sections of top companies and industries related to your careers of interest. Check their job descriptions and what they require of prospective employees.

Example: 3D Computer Animator

Industrial Light and Magic <https://jobs.lucasfilm.com/>

Pixar <http://www.pixar.com/careers>

(Some may also post names of colleges from which they have hired graduates for their positions.)

Find out what they want, then see what colleges provide that!

Paying for College Resources: Financial Aid for College

www.fastweb.com-Scholarship search website.

www.collegeforalltexas.com – a great resource that provides a great wealth of information for college bound students!

FAFSA-Free Application for Federal Student Aid for College!

Set up personal ID and password, and obtain information regarding types of financial aid available through the US government, and steps to take to obtain it. <https://fafsa.ed.gov/>



Want more information and assistance?


Contact Ms. Beverly Litton, Guthrie Center/Career Counselor

Beverly.Litton@springbranchisd.com 713-251-1303

9/26/19

www.onetonline.org

A great resource for Questions 1-4!!



O*NET OnLine

Occupation Quick Search:

Help Find Occupations Advanced Search Crosswalks Share O*NET Sites



Build your future with O*NET OnLine.

Welcome to your tool for career exploration and job analysis!

O*NET OnLine has detailed descriptions of the world of work for use by job seekers, workforce development and HR professionals, students, researchers, and more!

[What is O*NET?](#)

What's New?

New BLS wage information in O*NET websites

[Learn More](#)

Get O*NET news by [email](#) or [RSS](#).

I want to be a...

Start the career you've dreamed about, or find one you never imagined.

[Find It Now](#)

at My Next Move

ATTN: VETERANS

Put your military skills and experience to work in civilian life. Learn how at:

MY NEXT MOVE FOR VETERANS

[Get Started](#)

Hot Technologies

are frequently included in employer job postings.

[Learn More](#)



Occupation Search

[Keyword](#) or [O*NET-SOC Code](#):



Find Occupations

[Browse](#) groups of similar occupations to explore careers. Choose from industry, field of work, science area, and more.

Bright Outlook



Advanced Search

[Focus](#) on occupations that use a specific tool or software. Explore occupations that need your skills.

Browse by O*NET Data:



Crosswalks

[Connect](#) to a wealth of O*NET data. Enter a code or title from another classification to find the related O*NET-SOC occupation.

Apprenticeship

HB5

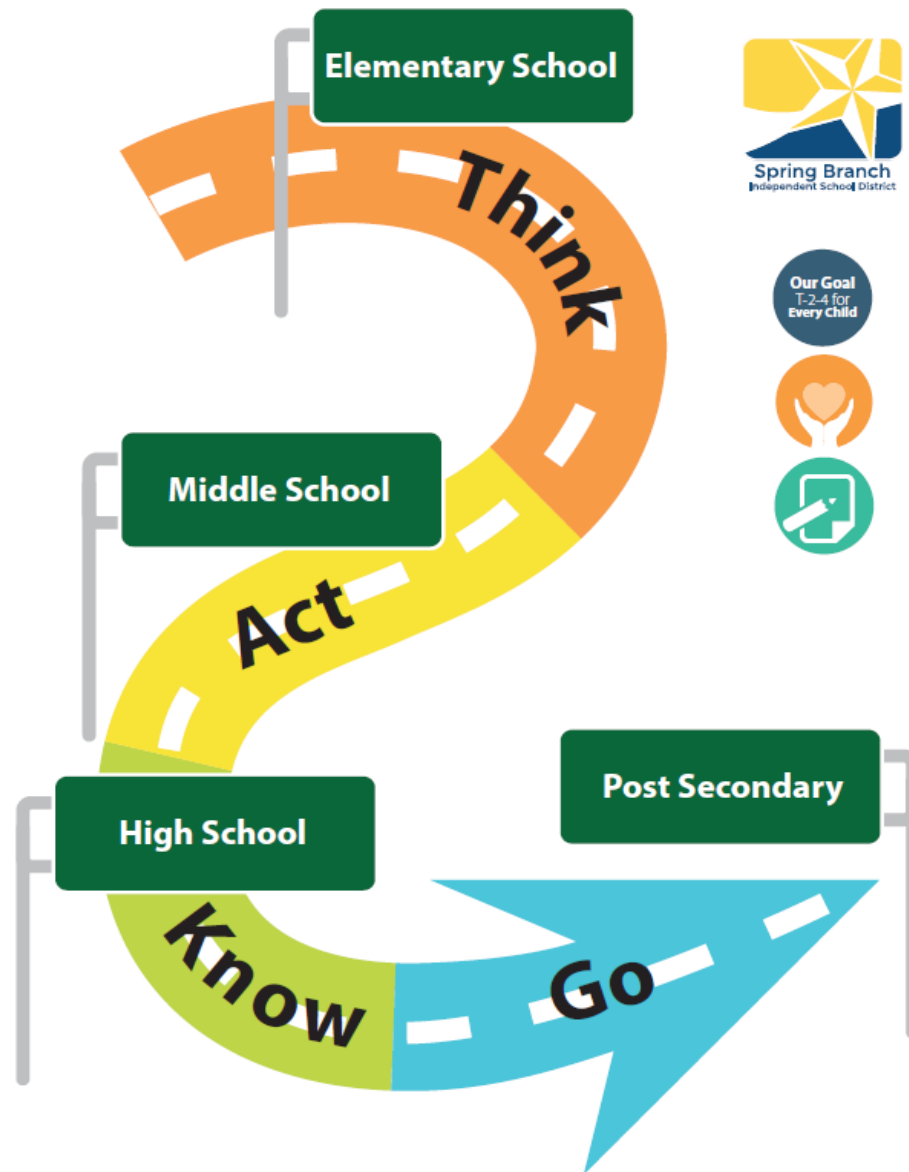


Elementary/Middle: Career Awareness

Middle : Exploration-Focus

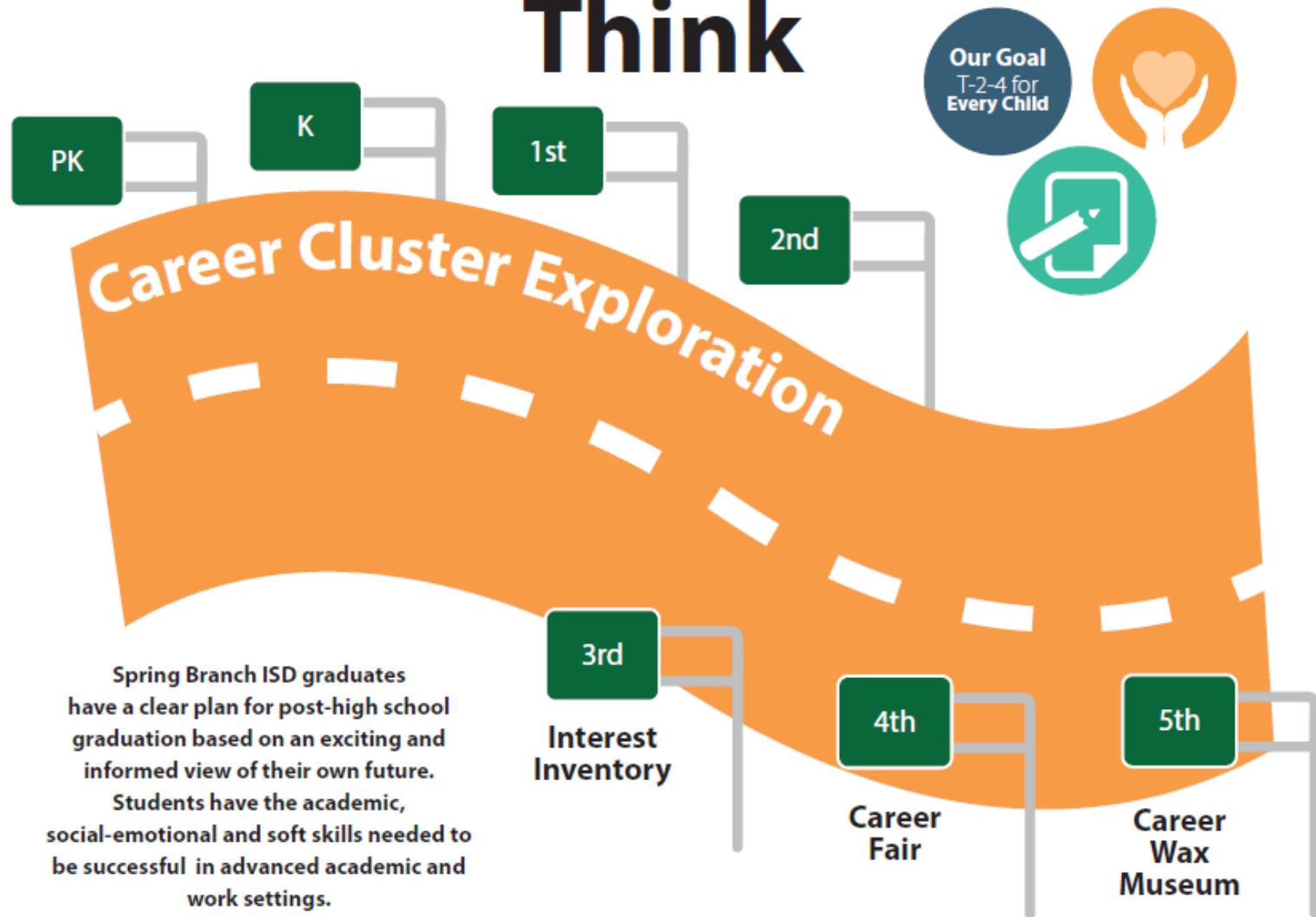
High School: Exploration-Focus-Direction

The Spring Branch ISD Career Education Initiative!!!



Spring Branch ISD graduates have a clear plan for post-high school graduation based on an exciting and informed view of their own future. Students have the academic, social-emotional and soft skills needed to be successful in advanced academic and work settings.

Elementary School Think





Middle School Act

Our Goal
T-2-4 for
Every Child



6th

**Career Key
Interest Inventory**

Spring Branch ISD graduates have a clear plan for post-high school graduation based on an exciting and informed view of their own future. Students have the academic, social-emotional and soft skills needed to be successful in advanced academic and work settings.

7th

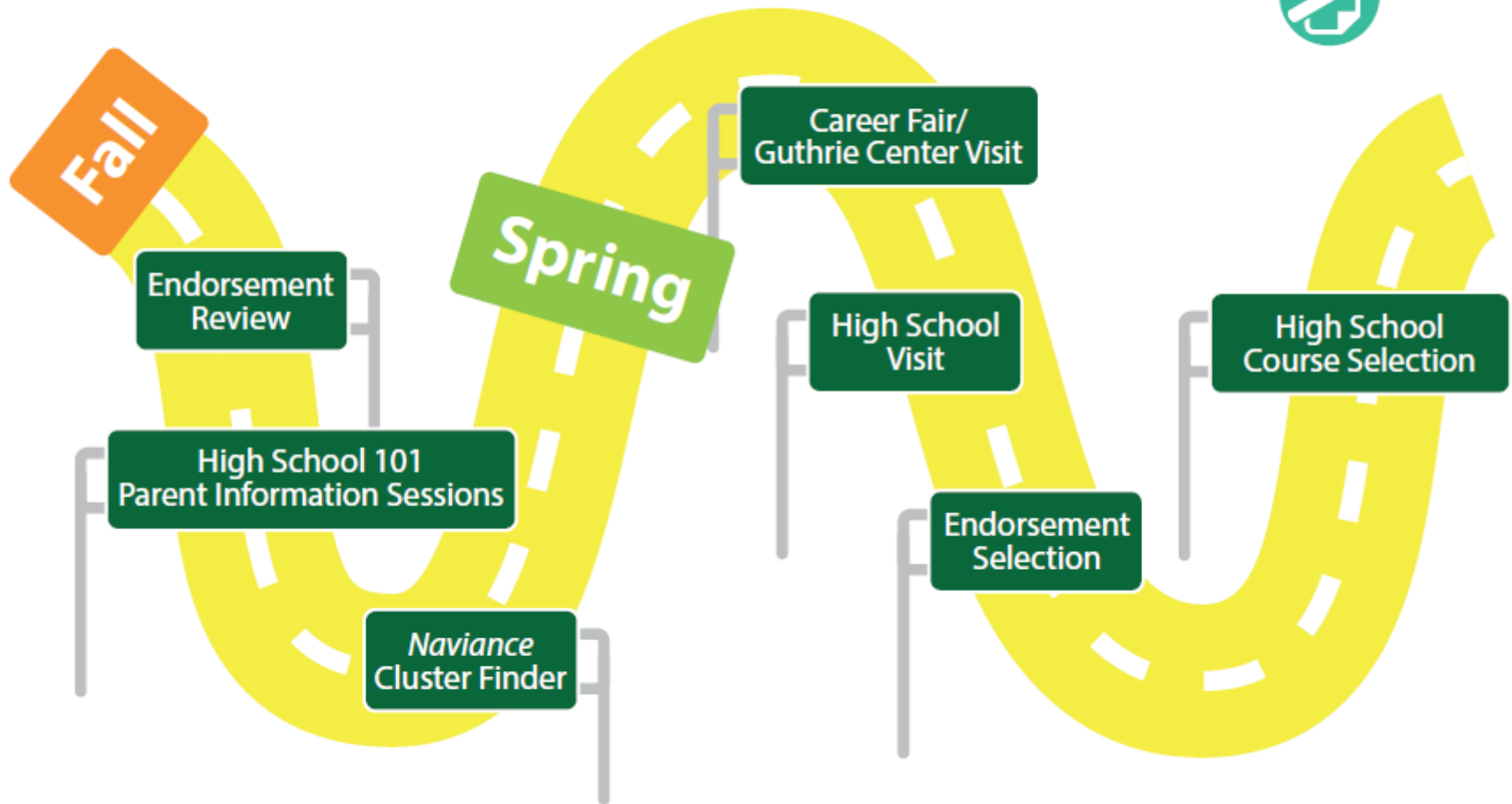
**Navigate Curriculum
Endorsement Modules**

8th

**Cluster Finder
Career Week Endorsement Selection**



8th Grade Act

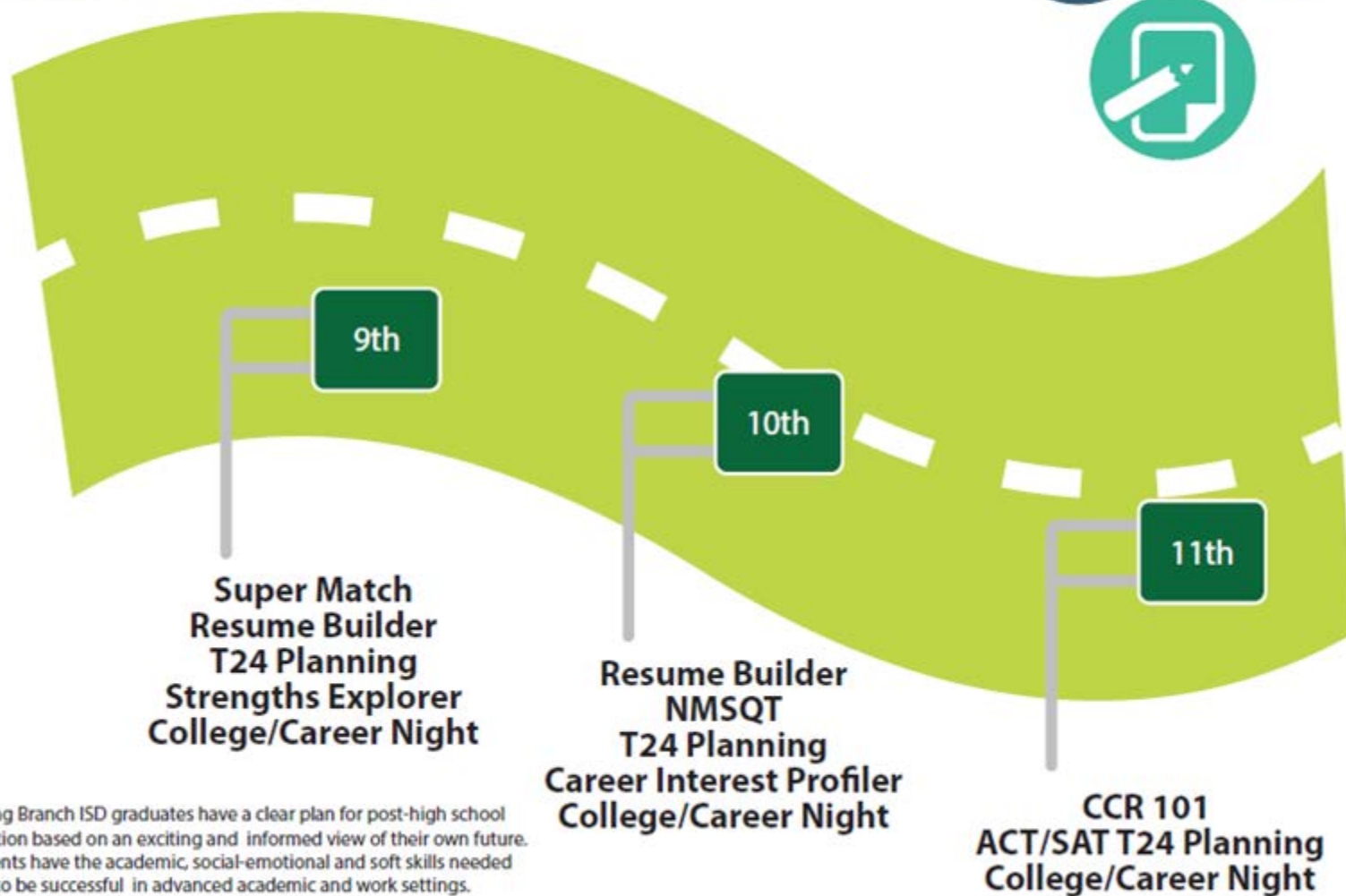


Spring Branch ISD graduates have a clear plan for post-high school graduation based on an exciting and informed view of their own future. Students have the academic, social-emotional and soft skills needed to be successful in advanced academic and work settings.



High School **Know**

Our Goal
T-2-4 for
Every Child





12th - Post-Secondary Go

Our Goal
T-2-4 for
Every Child



12th

Post-Secondary

T24 Launch

Spring Branch ISD graduates have a clear plan for post-high school graduation based on an exciting and informed view of their own future. Students have the academic, social-emotional and soft skills needed to be successful in advanced academic and work settings.

Alumni Supports



HB 5

Endorsements

Most high school
graduation endorsements
incorporate career focus opportunities.

Endorsement Categories



STEM: Science, Technology, Engineering, Math

Business & Industry

Public Services

Arts & Humanities

Multidisciplinary

Graduation Program – Overview

Foundation High School Program

A new, more flexible graduation program that allows students to pursue their interests is in place for all students who entered high school beginning in the 2014-2015 school year.

The program contains:

- A 22-credit Foundation Plan which is the core of the new Texas high school diploma
- Five endorsement options that allow students to focus on a related series of courses

Foundation Plan (22 credits)

English (4 credits)	English I	English II	English III	An advanced English course
Mathematics (3 credits)	Algebra I	Geometry	An advanced math course	
Science (3 credits)	Biology	Integrated Physics & Chemistry or an advanced science	An advanced science course	
Social Studies (3 credits)	W. History or W. Geography	U.S. History	U.S. Government (.5 credit)	Economics (.5 credit)
Languages other than English (2 credits)	2 credits in the same language or 2 credits in Computer Science			
Physical Education (1 credit)	Fine Arts (1 credit)	Electives (5 credits)		

Foundation Plan with Endorsements (26 credits)

Spring Branch ISD encourages every student to graduate with at least one endorsement.*

Select an endorsement below to view specific graduation requirements:



[STEM](#)



[Business/Industry](#)



[Public Services](#)



[Arts/Humanities](#)



[Multidisciplinary](#)

Enhancements

Additionally, a student may earn the Distinguished Level of Achievement and/or a Performance Acknowledgment for outstanding performance. The Distinguished Level of Achievement must be earned to be admitted to a Texas public university under the Top 10 percent automatic admission law.

Distinguished Level of Achievement	Performance Acknowledgments
• Foundation Program requirements	• dual credit course
• 4 credits in mathematics including Algebra II	• bilingualism and biliteracy
• 4 credits in science	• PSAT, ACT's PLAN, SAT, or ACT
• at least 1 endorsement	• Advanced Placement or International Baccalaureate exam
	• earning a nationally or internationally recognized business or industry certification or license

* A student entering 9th grade must indicate an endorsement he or she plans to follow. A student may change or add an endorsement at any time.

* A student may graduate without earning an endorsement if, after his or her sophomore year, the student's parent signs a form permitting the student to omit the endorsement requirement.

Source: Texas Education Agency Graduation Tool

Graduation Program
Overview section
from the SBISD
Course Catalog
of each
high school's
website.

Click on the Five
Endorsement names for
the graduation pathways.

The 16 Career Clusters



The Career and Technical Education Course descriptions in the 2019-2020 SBISD Course Catalog (pp. 80-103) are organized by Endorsements and Career Clusters.

Career Clusters were created by the US Govt. to organize careers:

- with similarities
- connections
- and are related to the cluster title category.

In the Endorsements, the Career & Technical Education (CTE) Pathways are categorized by Career Clusters. Pictured below are the CTE career clusters in the **Business & Industry Endorsement**.

Select one of the options below.

Language Arts Electives	<u>4 ELA elective credits</u> with 3 levels in the same area
Technology Applications	<u>4 credits</u>
Career & Technical Education	<u>Agriculture, Food & Natural Resources</u>
	<u>Architecture & Construction</u>
	<u>Arts, A/V Technology & Communications</u>
	<u>Business, Management & Administration</u>
	<u>Finance</u>
	<u>Hospitality & Tourism</u>
	<u>Information Technology</u>
	<u>Marketing</u>

Additional Credit Requirements

Business & Industry Endorsement Overview of the Ag., Food and Natural Resources Career Cluster Pathways

Agriculture, Food and Natural Resources (AFNR)

Earn the Business and Industry endorsement by completing four credits within the CTE AFNR Cluster, including one advanced course, as noted by **(ADV)**.

Animal Science Pathway

Course List:

- Principles of AFNR
- Small Animal Management
- Equine Science
- Livestock Production
- Vet Med Applications **(ADV)**
- Advanced Animal Science **(ADV)**
- Practicum in AFNR **(ADV)**

Plant Science Pathway

Course List:

- Principles of AFNR
- Landscape Design and Management
- Turf Grass Management
- Wildlife, Fisheries and Ecology Management
- Horticulture Science **(ADV)**
- Floral Design
- Advance Plant and Soil Science **(ADV)**
- Practicum in AFNR **(ADV)**

Oil and Gas Pathway

Course List:

- Principles of AFNR
- Agricultural Mechanics
- Oil and Gas Production I
- Oil and Gas Production II **(ADV)**
- Practicum in AFNR **(ADV)**

Course Selection Notes:

- All courses are taken through the Guthrie Center
- Some courses satisfy Math, Science or Fine Arts graduation requirements
- Additional agriculture courses may be available based on space for students to continue participation in FFA when pathway is complete
- A paid work experience in pathways may be available through the Guthrie Center Internship class

Certifications Available in Cluster:

- Certified Vet Assistant Level I
- OSHA 10
- International Association of Drilling Contractors Rig Pass
- Texas Florist High School Floral Certification
- Texas Hunter Education Certification
- Texas Boater Education Certification

Business & Industry Endorsement

The Animal Science Pathway Course Sequence within the Ag., Food & Natural Resource Career Cluster

Animal Science Pathway (Guthrie)

Earn the Business and Industry endorsement by completing four credits within the CTE AFNR Cluster, including one advanced course, as noted by **(ADV)**.

Principles of Agriculture, Food and Natural Resources (AFNR)

Course ID: CTAG10/13000200
Credit: 1.0 (1 Semester)

Study how food, clothing, shelter, transportation, medicine and modern-day conveniences rely on agricultural products. Explore how agriculture affects government and international trade.

Livestock Production

Course ID: CTAG11/13000300
Credit: 1.0 (1 Semester)

Explore an introduction to livestock production including anatomy, nutrition, health care and information specific to various species.

- **Rec PR: Principles AFNR**

Advanced Animal Science* (ADV)

Course ID: CTAG15/13000700
Credit: 1.0 (1 Semester)

Deepen knowledge in livestock industry through In-depth studies include animal industry, anatomy and physiology, and livestock husbandry.

- **PR: Small Animal Mgmt, Equine Science or Vet Med Applications**
- **PR: Biology and Chemistry or IPC, Algebra I and Geometry**

AND

Small Animal Management AND Equine Science

Course ID: CTAG12/13000400 & CTAG13/13000500
Credit: 1.0 (0.5 + 0.5) (1 Semester)

Develop knowledge and skills pertaining to the selection, nutrition, grooming, reproduction, health and management of small animals.

Study the science of horses including genetics, anatomy, physiology/nutrition, diseases, pests, and management practices.

- **Must be taken concurrently**

AND

Vet Med Applications (ADV)

Course ID: CTAG14/13000600
Credit: 1.0 (1 Semester)

Learn the basics of the veterinary medical profession and gain skills in handling a wide variety of animals, assisting clients, office management and legal issues. Study common ailments and treatments as well as emergency care techniques.

- **PR: Livestock Production or Small Animal Mgmt/Equine Science**

OR

Practicum in AFNR (ADV)

Course ID: CAG82 A&B/13002500
Credit: 2.0

Participate in a supervised practical application of AFNR through classroom learning and a paid or unpaid work experience. Acquire employability skills and experience for pursuit of career opportunities in AFNR.

Pathway Notes:

- Additional agriculture courses may be available based on space for students to continue participation in FFA when pathway is complete
- * Satisfies a high school Science graduation requirement
- A paid work experience in this pathway may be available through the Guthrie Center Internship class

Certification Available:
Certified Vet Assistant Level I

Benefits of exploring careers through HS CTE or other career focus electives:

1. Students gain “real world” experiences in their careers of interest.
2. Opportunities to discover career area passions they love... **or NOT**... prior to HS graduation! (Saves the expense of “exploring” in college.)
3. Opportunities for the individuals to explore varieties of careers within career clusters.
4. Many of the CTE electives can lead to internships with business and industries related to students’ career focus areas.
5. Many of the CTE programs prepare students for related professional certification exams regularly offered in colleges.
6. Career direction and focus is considered a benefit in the competitive admissions process for colleges and universities.
7. Having career direction enables students to focus post-secondary research on finding colleges that provide the education/training/connections needed to reach their career goals.

SBISD Career & Technical Education Programs by Endorsements and Career Clusters

in SBISD High Schools

STEM

Engineering

Business & Industry-

Arts, A/V Technology & Communications

Business, Management & Administration

Finance

Hospitality & Tourism

Information Technology

Manufacturing

Marketing

ALL Endorsements

Career Prep and Guthrie Internships

SBISD Career & Technical Education by Endorsement and Career Clusters in SBISD High Schools

Public Service

Education and Training

Health Science

Human Services

Law Public Safety, Corrections &
Security (includes NJROTC)

ALL Endorsements

Career Prep and Guthrie Internships

Science, Technology, Engineering, & Mathematics Endorsement

ST Engineering

BIOTECHNOLOGY

(State-Approved Advanced Science Course)

As a Biotechnology student, you will study the emerging fields of biotechnology such as agricultural, medical, regulatory, and forensics. You will have the opportunity to use sophisticated laboratory equipment, perform statistical analysis, and practice quality-control techniques. In addition, you will conduct laboratory and field investigations using scientific methods during investigations to make informed decisions to solve problems. Advanced Biotechnology students study a variety of topics that include structures and functions of cells, nucleic acids, proteins, and genetics.

Recommended Prerequisites: Biology and Chemistry

Schools: MHS, SWHS

Grades: 11-12

Credit/Course ID: 1 / 13036400 / CST12A & CST12B

Project Lead the Way (PLTW)—INTRODUCTION TO ENGINEERING DESIGN

This course teaches you the engineering design process through activities, problems, and projects. Topics include engineering notebooks, design processes, prototyping, technical sketching, measurement and statistics, 3D computer solid modeling, and reverse engineering. This is the prerequisite for all PLTW courses.

Schools: MHS, SWHS, SHS

Grades: 10-11

Credit/Course ID: 1 / N1303742 / CST51A & CST51B

Project Lead the Way (PLTW)—AEROSPACE ENGINEERING

Aerospace Engineering engages students in engineering design problems related to aerospace information systems, astronautics, rocketry, propulsion, the physics of space science, space life sciences, the biology of space science, principles of aeronautics, structures and materials, and systems engineering. Students will also have opportunities to learn and explore basic orbital mechanics, rocket design, environmental control and life support, and robotic system design for planetary exploration – real world scientific/aerospace projects and problems encountered by aerospace engineers.

Prerequisite: Successful completion of Introduction to Engineering Design

Schools: MHS, SWHS

Grades: 10-11

Credit/Course ID: 1 / N1303745 / CST71A & CST71B

Engineering Science/Project Lead the Way (PLTW)—PRINCIPLES OF ENGINEERING

(State-Approved Advanced Science Course)

Principles of Engineering introduces you to major concepts studied in a higher education engineering program. Topics include mechanisms, energy, statics, materials, kinematics, and computer control systems. You will develop problem-solving skills and apply your knowledge of math, science, and design to create solutions to various challenges, document your work, and communicate solutions.

Prerequisite: Successful completion of Introduction to Engineering Design and completion or concurrent enrollment in Algebra II

Schools: MHS, SWHS, SHS

Grades: 10-11

Credit/Course ID: 1 / 13037500 / CST52A & CST52B

Current CTE
course
descriptions
are located in
the Course
Catalog,
pp. 80-103.



THE Guthrie CENTER



Explore Careers While in High School!!!

SBISD Career & Technical Education Programs by Endorsements and Career Clusters at the GUTHRIE Center

Business & Industry

Agriculture, Food and Natural Resources

Architecture & Construction

Arts, A/V Technology & Communications

Hospitality & Tourism

Information Technology

Public Services

Health Science

Law, Public Safety, Corrections & Security

ALL Endorsements

Guthrie Internships

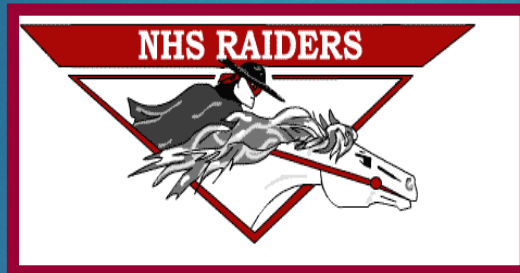
THE Guthrie CENTER

STUDENTS FROM EVERY SPRING BRANCH HIGH SCHOOL
HAVE ACCESS TO THE GUTHRIE CENTER COURSES !

Memorial



Northbrook



Spring Woods



Stratford



Westchester



Academy of Choice

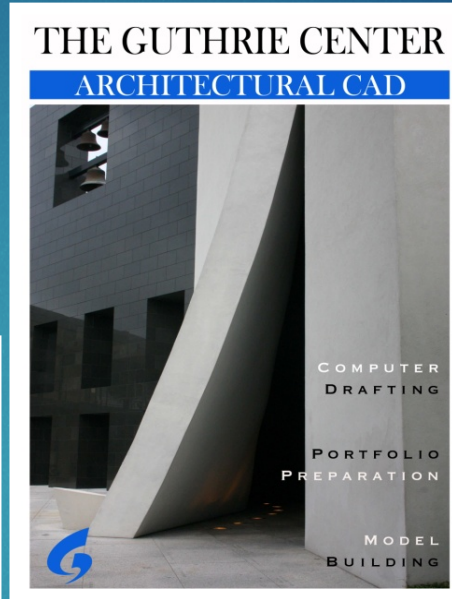


Yes Prep



Bus transportation is provided from the high schools to the GC and back!

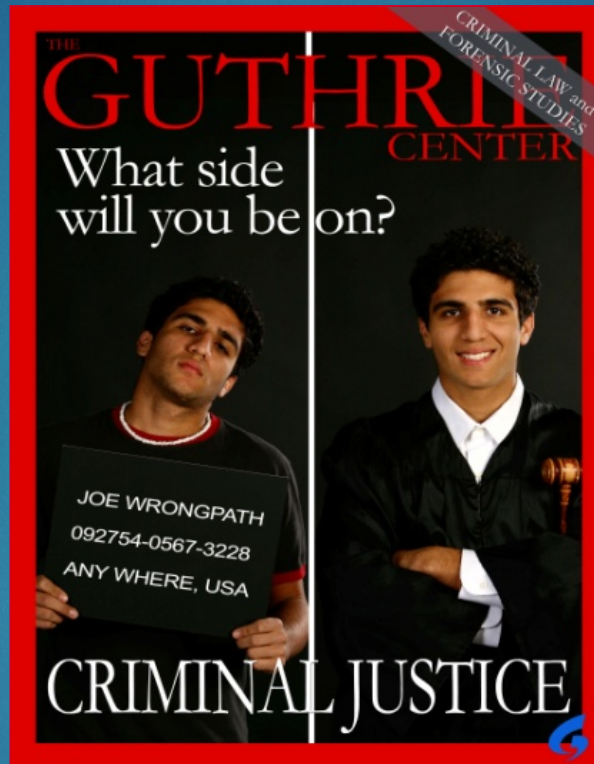
THE Guthrie CENTER



THE **Guthrie** CENTER THE **Guthrie** CENTER THE **Guthrie** CENTER THE **Guthrie** CENTER



THE Guthrie CENTER



THE **Guthrie** CENTER THE **Guthrie** CENTER THE **Guthrie** CENTER THE **Guthrie** CENTER



THE Guthrie CENTER



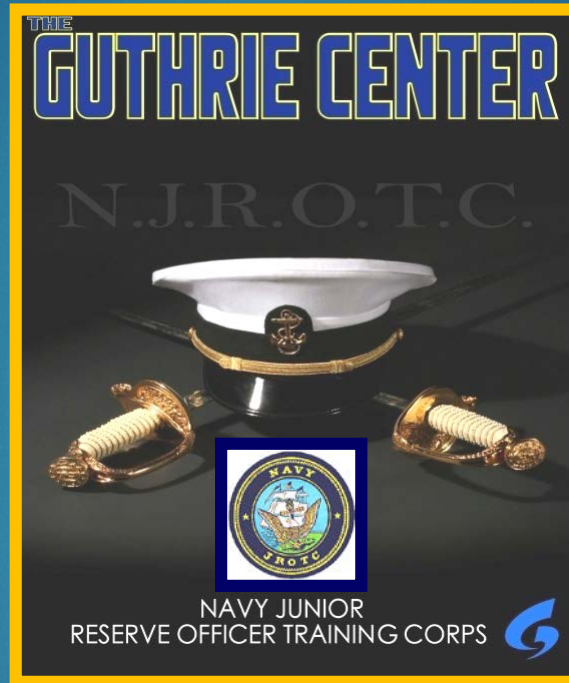
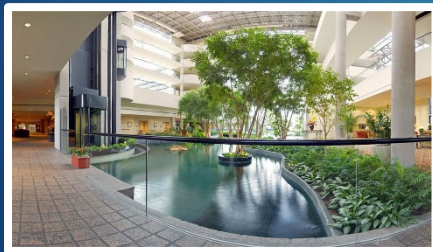
TRIO Electrical Technician Apprenticeship



THE **Guthrie** CENTER THE **Guthrie** CENTER THE **Guthrie** CENTER THE **Guthrie** CENTER



THE Guthrie CENTER



Distinguished Unit
With Academic Honors

PHARMACY TECH



THE **Guthrie** CENTER THE **Guthrie** CENTER THE **Guthrie** CENTER THE **Guthrie** CENTER



R

For detailed information about the Guthrie Center programs, check the CTE portion of the Course Catalog (pp. 80-103) on your high school website or go to

<http://guthriecenter.springbranchisd.com> .



THE Guthrie CENTER

THE Guthrie CENTER
Choose. Apply. Succeed.

NEWS | PROGRAMS | PEOPLE | IN THE ABOUT | GOALS | VIRTUAL | Q & A

EXCELLENCE

Our students receive the highest technical, professional and leadership skills training in a simulated workplace environment to prepare them for success in any future career.

PERSONALIZATION

If creative, technical, communication, leadership or service-oriented careers excite you, then our fifteen diverse program areas will open doors to hundreds of professional occupations.

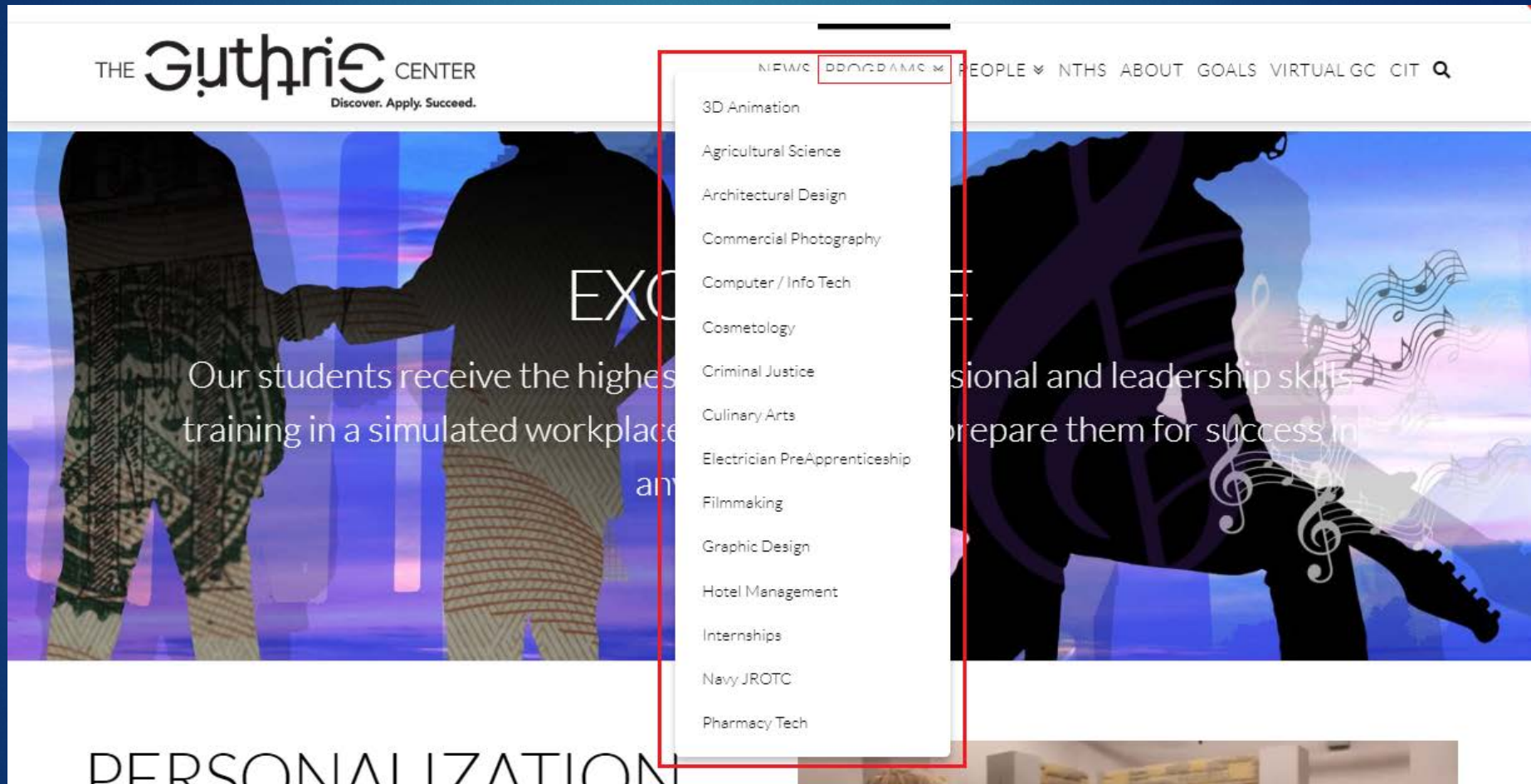


Choose Internships and Start Your Future.



<http://guthriecenter.springbranchisd.com>

THE Guthrie CENTER



The screenshot shows the homepage of The Guthrie Center. The header includes the logo "THE Guthrie CENTER" with the tagline "Discover. Apply. Succeed." and a navigation menu with links: NEWS, PROGRAMS, PEOPLE, PARTNERS, ABOUT, GOALS, VIRTUAL GC, and CONTACT. A red box highlights the "PROGRAMS" dropdown menu, which lists the following programs: 3D Animation, Agricultural Science, Architectural Design, Commercial Photography, Computer / Info Tech, Cosmetology, Criminal Justice, Culinary Arts, Electrician PreApprenticeship, Filmmaking, Graphic Design, Hotel Management, Internships, Navy JROTC, and Pharmacy Tech. The main content area features two large images. The left image shows two people in traditional African attire with the text "EXCELLENCE" and "Our students receive the highest quality training in a simulated workplace and...". The right image shows a person playing a guitar with musical notes and the text "Professional and leadership skills" and "prepare them for success in...". At the bottom, the word "PERSONALIZATION" is partially visible.

THE Guthrie CENTER
Discover. Apply. Succeed.

NEWS PROGRAMS PEOPLE PARTNERS ABOUT GOALS VIRTUAL GC CONTACT

3D Animation
Agricultural Science
Architectural Design
Commercial Photography
Computer / Info Tech
Cosmetology
Criminal Justice
Culinary Arts
Electrician PreApprenticeship
Filmmaking
Graphic Design
Hotel Management
Internships
Navy JROTC
Pharmacy Tech

EXCELLENCE

Our students receive the highest quality training in a simulated workplace and...

Professional and leadership skills
prepare them for success in...

PERSONALIZATION

<http://guthriecenter.springbranchisd.com>

THE Guthrie CENTER

Check it out for yourself!

Guthrie Center Community Tuesday

October 1st, 2019

5:00 pm-7:00 pm

Tour the Guthrie Center and visit with the instructors, explore the classrooms and labs, and see these exciting programs in person!

Open to students, parents, educators, business and industry, and other community members.

