



Economic Development Luncheon 2019

Presenting Sponsor

Gold Sponsor



Media Sponsor



Silver Sponsors



Economic Development Update

April 25, 2019

Mark K. McGovern
Director of Community Development

Kristen Gorski
Economic Development Specialist



Let's take a drive through town!



Starting in Corbin's Corner....





Delaware
**COMING
SOON**
RESTAURANT & BAR
85W FOLKHOUSCO











Heading to Elmwood (with a slight detour)







GOLDBERG LARKIN

FINANCIAL EMPOWERMENT
FOR PEOPLE IN TRANSITION

**TF Fuchs
Financial**

Wealth Management • Planning • Retirement

CCB Law
Costello, Coombes & Brown, LLP









Over to New Park Avenue







Welcome to

Open 7 days

Wagging Tails
Pet Resort & Spa
waggingtails.com • (860) 621-Pets

CT's First Indoor Dog Park

Daycare • Boarding • Grooming • Training
Cage Free Option • Pool • Transpawtation

Your pet's home, away from home!





Adams|Ahern

*Signage, Wayfinding + Architectural Graphics
Design, Planning, Fabrication + Installation*







What's new on Park Road?











Flash





Tidemark















**Let's go to Blue Back
Square.... by way of
Prospect and
Farmington Ave.**





deadbolt

BAR & GRILL



 **SPACES.**



THRIVENT®
Be Wise With Money™











So what's new in the Center?



 **Berkley Healthcare**
FINANCIAL LINES
| a Berkley Company



TRIFECTA BODY
BARREPILETES















The Law Offices of Richard A. Witt



**We're almost done!
Really.**



On to Bishops Corner.







west elevation



FLOAT
FORTY-ONE



ketamine
GREATER BOSTON

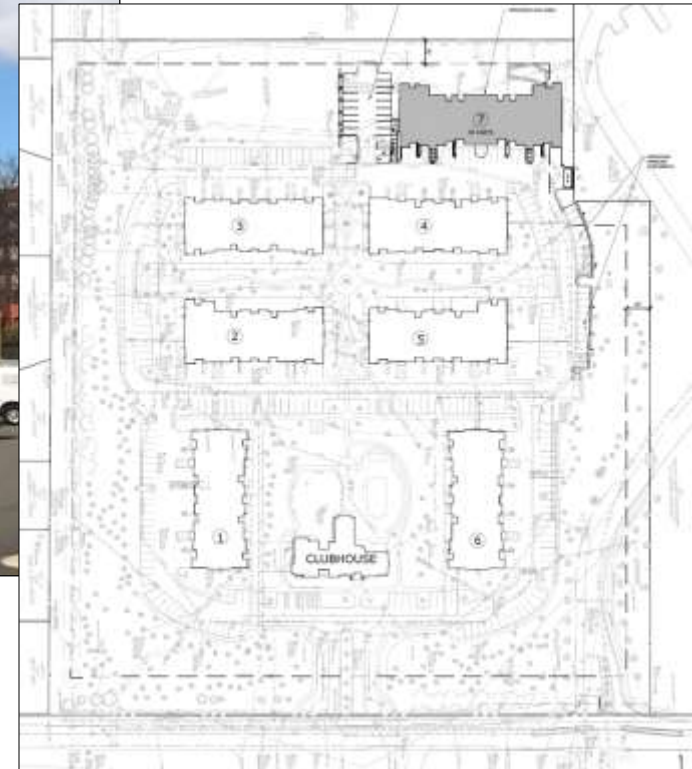


RCCA[®]
REGIONAL CANCER CARE ASSOCIATES

PBI | **PINNACLE**
BEHAVIORAL HEALTH







Hey Kristen, let's anticipate a question...



What's the status of the Ideanomics proposal?





What is a POCD?



WEST HARTFORD

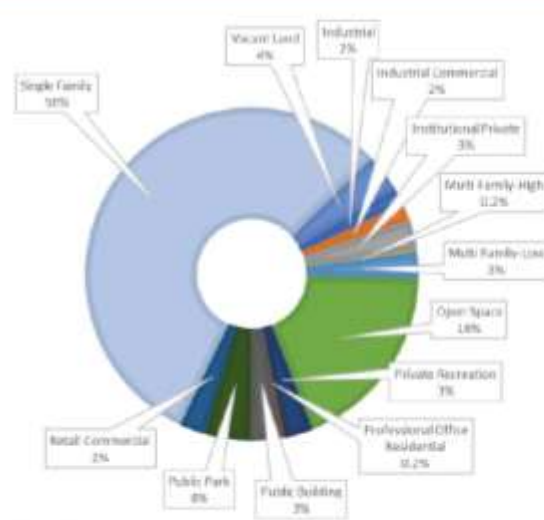


The Plan of Conservation and Development (POCD) is a road map for the future of the community. It identifies a long-term vision, goals, strategies and action steps necessary to support the Town's vision and goals. The plan covers areas such as economic development, housing, transportation, infrastructure, open space, environment, and Town services.





WEST HARTFORD'S LAND USE



FITZGERALD & HALLIDAY, INC.
Executive Planning, State & Local

Source: Town/State GIS data



How many people participated in the development of the POCD?





1. Bishops Corner
2. Center/Blue Back Square
3. Park Road
4. New Park Avenue
5. Elmwood Center
6. Corbin's Corner



What have we learned?

- Survey respondents were pro-growth
- Commercial creep is a concern
- Online vs. brick and mortar
- Experiential retail is growing
- Pedestrian/bicycle amenities are important
- Co-working is more than a trend
- Parking. Parking. Parking.



What's next in the POCD Process?

- Time to write a plan
- Final public comments
- Final comments from Town Council and Capitol Region Council of Governments
- Adoption by Town Plan & Zoning Commission



Questions?





Economic Development Luncheon 2019

Presenting Sponsor

Gold Sponsor



Media Sponsor



Silver Sponsors

