

# BURLINGTON HIGH SCHOOL

123 Cambridge Street, Burlington, MA 01803 • (781) 270-1853 • fax (781) 270-1841 • CEEB: 220470  
[burlingtonpublicschools.org](http://burlingtonpublicschools.org)

## School Profile 2019-2020 "Best Schools"- Boston Magazine 2018

### Administration:

Dr. Eric Conti, *Superintendent*  
Mark Sullivan, *Principal*

### Support Services Coordinator:

Joseph Attubato • [attubato@bpsk12.org](mailto:attubato@bpsk12.org)

### School Counselors:

Stephanie Diozzi • [diozzi@bpsk12.org](mailto:diozzi@bpsk12.org)  
Molly Leary • [leary@bpsk12.org](mailto:leary@bpsk12.org)  
Emily Minty • [eminty@bpsk12.org](mailto:eminty@bpsk12.org)  
Leisel Smith • [lsmith@bpsk12.org](mailto:lsmith@bpsk12.org)  
Gloria Wojtaszek • [wojtaszek@bpsk12.org](mailto:wojtaszek@bpsk12.org)

## COMMUNITY

Burlington is a dynamic, suburban New England town of approximately 26,000. Located 13 miles northwest of Boston in the middle of "America's Technology Highway", the I-95/ Route 128 inner-loop, Burlington is home to many of the region's finest healthcare, research and development, restaurants, and high tech companies, raising the daytime population to 150,000. Our diverse community is primarily composed of professional families vitally interested in supporting academic excellence.

## SCHOOL

Burlington High School is a diverse, public, 4-year college preparatory high school with a strong, 1:1 technology focus. The vast majority of its 95 teaching faculty and staff members hold advanced degrees of a master's degree or higher.

Burlington High School is validated by the Massachusetts Department of Education and is accredited by the New England Association of Schools and Colleges (NEASC).

Total Enrollment 2019-2020:	940
Class of 2019 (total):	248
Teacher-Student Ratio:	1:12

## GRADUATION REQUIREMENTS

The academic year is divided into 2 semesters. Semester courses receive 2.5 credits; year-long classes receive 5 credits.

**110 credits** are required for graduation and must include:

English . . . . .	4 yrs
Social Studies . . . . .	3 yrs
<i>(including US History I &amp; II; World History II)</i>	
Science . . (all are lab-based). . . . .	3 yrs
<i>(including 1 yr Life Science; 1 yr Physical Science)</i>	
<b>* AP science classes/ labs comprise 6 days/wk</b>	
Mathematics . . . . .	4 yrs
World Language . . . . .	2 yrs
Health . . . . .	2 semesters
Physical Education . . . . .	4 semesters
<i>Electives: 10 additional credits from arts, business, family/</i>	
<i>consumer science, and interdisciplinary areas</i>	

## CURRICULUM

BHS offers a broad selection of courses at varying instructional levels to meet the needs, abilities, and interests of all students. These include: Advanced Placement (AP), Honors (HON), College Prep I (CP1/CP), College Prep II (CPII) and Foundational (FOU).

### Advanced Placement

Beginning sophomore year, AP classes are available to students who meet strict academic guidelines and have teacher recommendations.

***Sophomores may only enroll in 1 AP course.***

# of AP Subjects:	20
# of AP Classes:	45
# of students enrolled:	275

### AP Courses Available

- Art: Studio Art
- Computer: Computer Science A, Computer Science Principles
- English: English Literature, English Language & Composition
- Foreign Language: Spanish Language, French
- Math: Calculus AB, Calculus BC, Statistics
- Science: Biology, Chemistry, Environmental Science, Physics C
- Social Studies: US History, World History, Human Geography, Psychology

### Dual Enrollment

Beginning junior year, dual enrollment classes are available to students who meet strict academic guidelines and have teacher recommendations. Agreements exist with Middlesex Community College and UMass Boston for Calculus, Psychology, Anatomy & Physiology, AP Literature, Latin V, and Intro to Programming (available to some sophomores).

***No additional GPA weight is given for Dual Enrollment classes.***

### SPECIAL PROGRAMS

Over 20 students participate in Virtual High School (VHS) courses at the AP, Honors, and CP levels ([www.GOVHS.org](http://www.GOVHS.org)).

## POST SECONDARY PLANS

	<u>2019</u>	<u>2018</u>	<u>2017</u>
4 Year colleges	77%	82%	81%
2 Year colleges	10%	9%	10%
Other schools	4%	1%	2%
<b>Total Education</b>	<b>91%</b>	<b>92%</b>	<b>93%</b>

\* Burlington High School does not rank students. \*

## CLASS of 2020 GPA PROFILE

(as of 9/2019)

**Mean GPA: 3.2512**      **Highest GPA: 4.55**  
**Lowest GPA: 0.82**

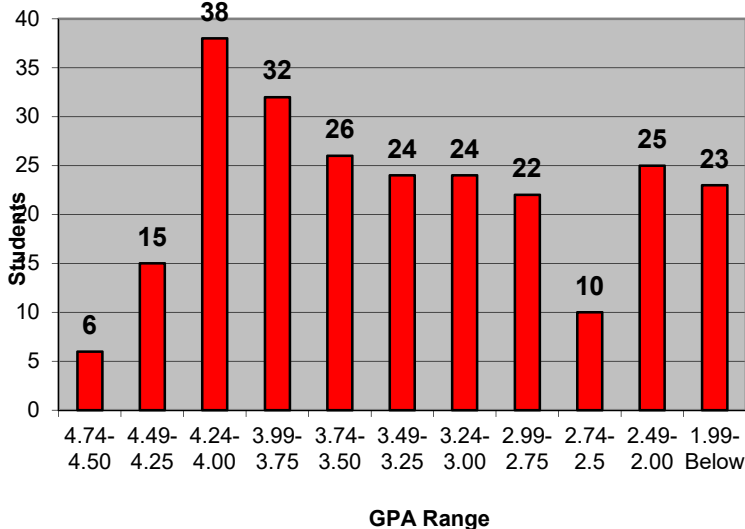
## GPA COMPUTATION

Cumulative grade point averages (GPA) include performance in all leveled, graded classes. Only courses taken at BHS during the regular academic year are included. GPAs are computed at the end of every school year and midway through senior year.

### Grading System & Weight Used to Determine GPA

<u>Mark</u>	<u>AP</u>	<u>Honors</u>	<u>CP I/CP II</u>
<b>A or A +</b>	5.0	4.5	4.0
<b>A-</b>	4.7	4.2	3.7
<b>B+</b>	4.3	3.8	3.3
<b>B</b>	4.0	3.5	3.0
<b>B -</b>	3.7	3.2	2.7
<b>C+</b>	3.3	2.8	2.3
<b>C</b>	3.0	2.5	2.0
<b>C-</b>	2.7	2.2	1.7
<b>D+</b>	2.3	1.8	1.3
<b>D</b>	2.0	1.5	1.0
<b>D-</b>	1.7	1.2	0.7
<b>F</b>	0.0	0.0	0.0

**Weighted 4.0 GPA Distribution**



## Demographics

Caucasian	67.7%
Asian	13.9%
African-American	6.6%
Multi-race/Hispanic	7.2%
Multi-race/Non-Hispanic	4.0%
Native American	0.5%

## STANDARDIZED TEST RESULTS

### National Merit Scholarship

<b>Class of 2020:</b>	6 Commended students
<b>Class of 2019:</b>	6 Commended students
<b>Class of 2018:</b>	8 Commended students

### SAT I: Reasoning Test

**Class of 2019 mean scores**

(54% of class tested with essay; 86% or 210 total students tested)

	<u>2019</u>	<u>2018</u>	<u>2017</u>
<b>EBRW- with essay</b>	<b>598</b>	<b>605</b>	<b>n/a</b>
Total	568	585	581
<b>Math- with essay</b>	<b>588</b>	<b>596</b>	<b>n/a</b>
Total	562	581	579

	<u>State Avg</u>	<u>National Avg</u>
<b>EBRW-with essay</b>	559	531
<b>Math</b>	561	528

### SAT Score Distribution

	<u>EBR</u>	<u>Math</u>
700-800	10%	9%
600-690	28%	21%
500-590	41%	50%
490-400	19%	18%
390-below	2%	3%

### AP Score Distribution

\* AP Tests are mandated for all AP students \*

	<u># Stud</u>	<u># Tests</u>	<u>5</u>	<u>4+</u>	<u>3+</u>
2019	239	467	20%	48%	83%
2018	240	462	17%	42%	71%
2017	240	463	15%	43%	71%

	<u>Scholars</u>	<u>Scholars w Honor</u>	<u>Scholars w Distinction</u>	<u>National Scholar</u>	<u>Internat'l Scholar</u>
2019	23	16	25	5	2
2018	32	17	19	1	0
2017	38	12	18	4	0

## Most Common Institutions Attended by BHS Students

Bentley University	Boston College	Boston University
Bridgewater State	Bryant University	Curry College
Endicott College	Fitchburg State	Framingham State
Mass College of Pharmacy	Merrimack College	Northeastern
Plymouth State	Roger Williams	Salem State
Suffolk University	UMass Amherst	UMass Boston
UMass Dartmouth	UMass Lowell	U New Hampshire
U Rhode Island	Westfield State	Wentworth Inst of Tech
Middlesex Comm College		

\* Provided by the National Student Clearinghouse, based on initial enrollment

*The mission of Burlington High School is to develop lifelong learners and engaged citizens who use creative and critical thinking, contribute to their community and who respect and understand human differences in an increasingly diverse and global society.*

Last Updated: 9/30/2019