



ELEVATE

Strategic Plan Connection: Facility Update
Board Meeting
September 23, 2019





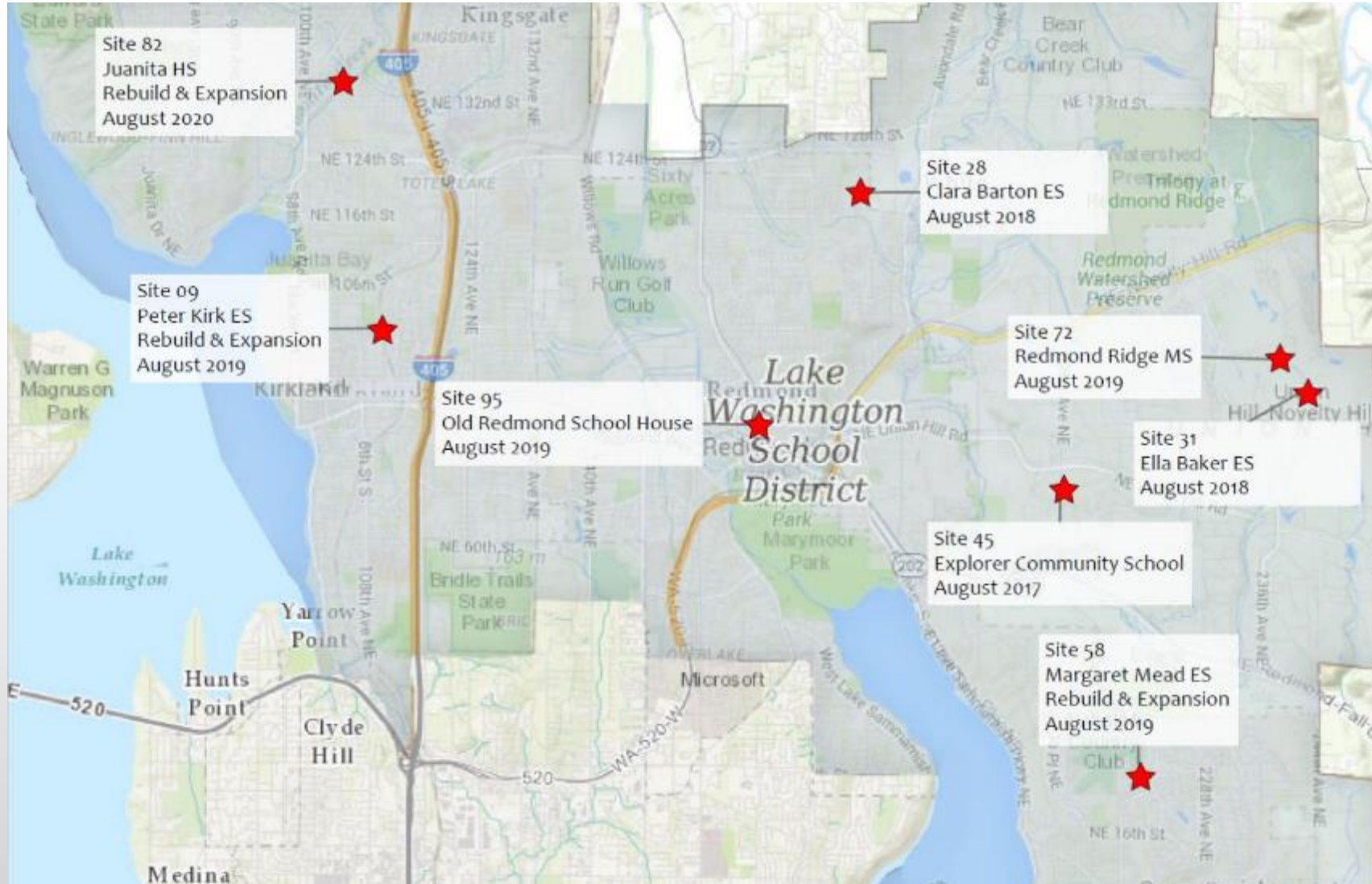
EFFECTIVE USE OF RESOURCES

We believe that using our resources responsibly and strategically will result in success for our students. As a publicly-funded organization, we must be efficient and effective in our use of public resources to ensure and maintain trust.

- **Facilities and Technology Systems**
- Transportation Systems
- Fiscal Responsibility

2016 Bond Projects Update

Project Sites





Juanita High School

Location: 10601 NE 132nd Street, Kirkland

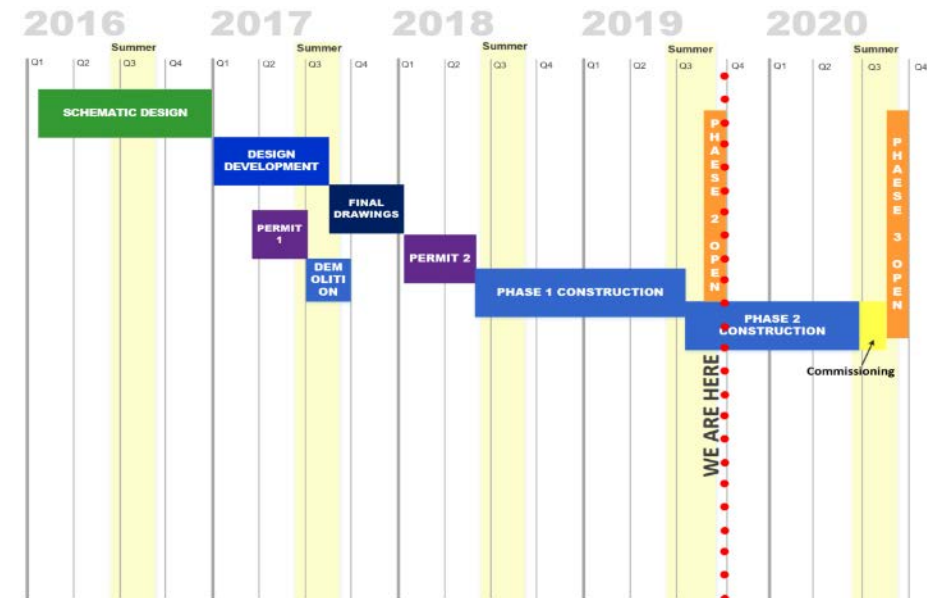
Square Footage: 219,364

*Fieldhouse & Pool remain "as is"

Capacity: 1,800 students (increase of 504)

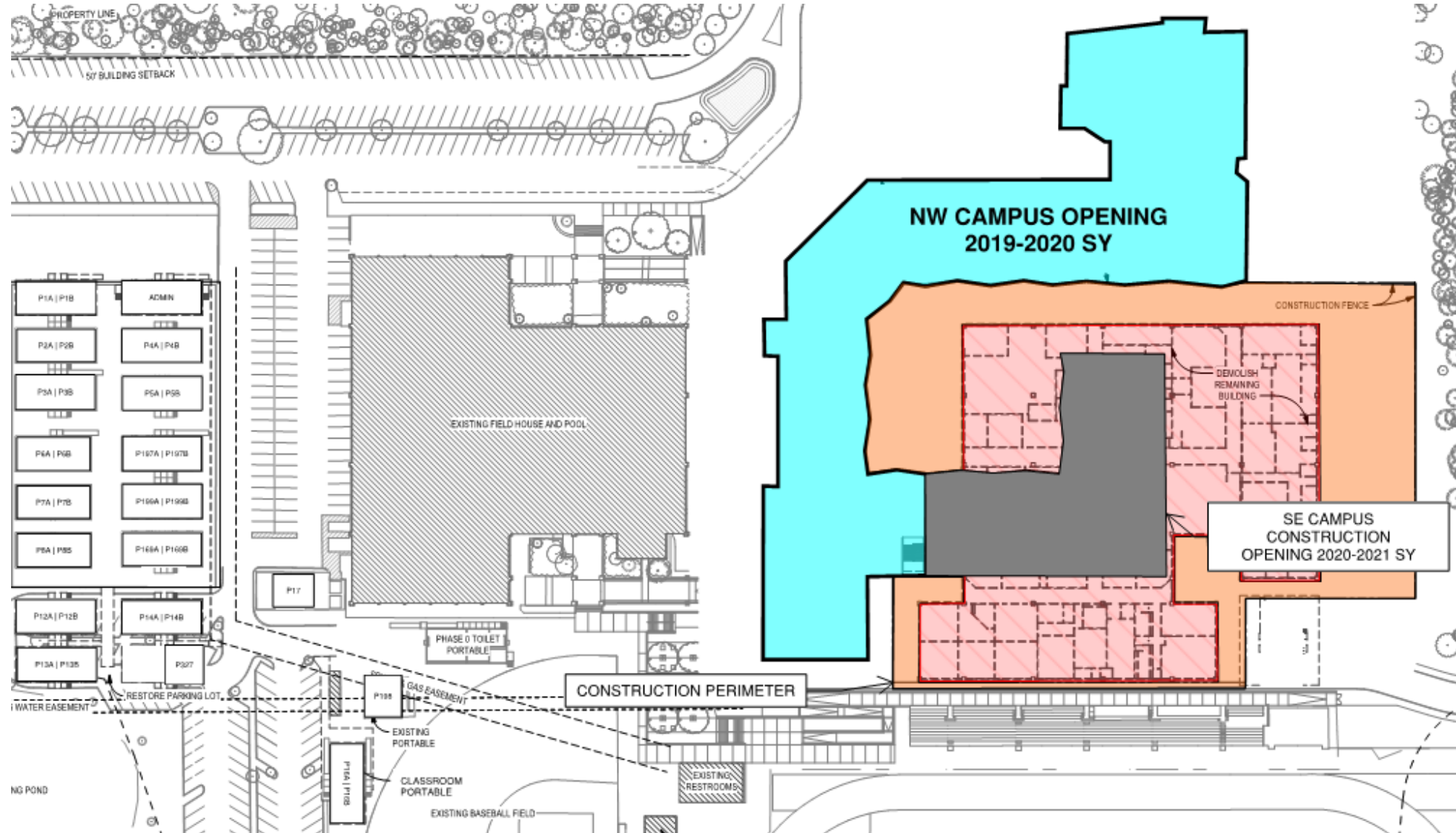
Spaces: 36 standard classrooms plus science labs, art, CTE, special education, instrumental & vocal music, library, theater, cafeteria

Planned Opening: September 2020 - one year early

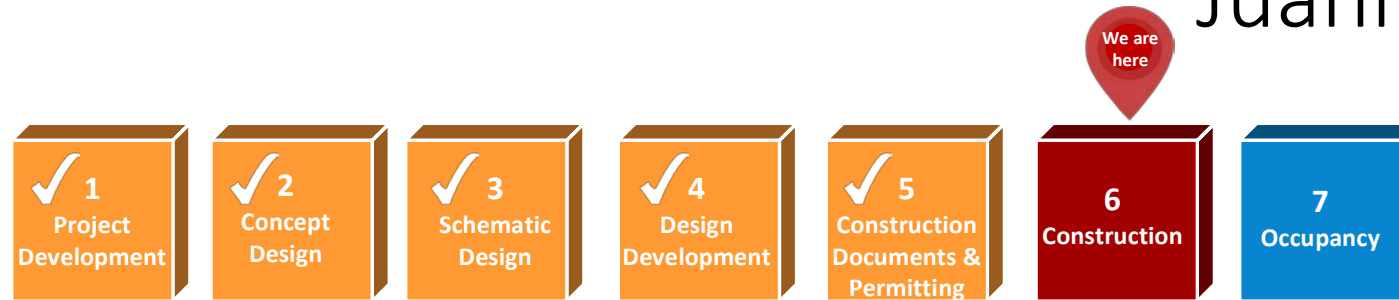


Finished Site Plan

Juanita High School



Juanita High School



Accomplishments

- Phase 1 temporary certificate of occupancy – July 2019
- Remaining existing academic building demolition complete – July 2019
- Staff move-in complete and building open
- Phase 2 concrete slab and building steel complete – September 2019

Upcoming

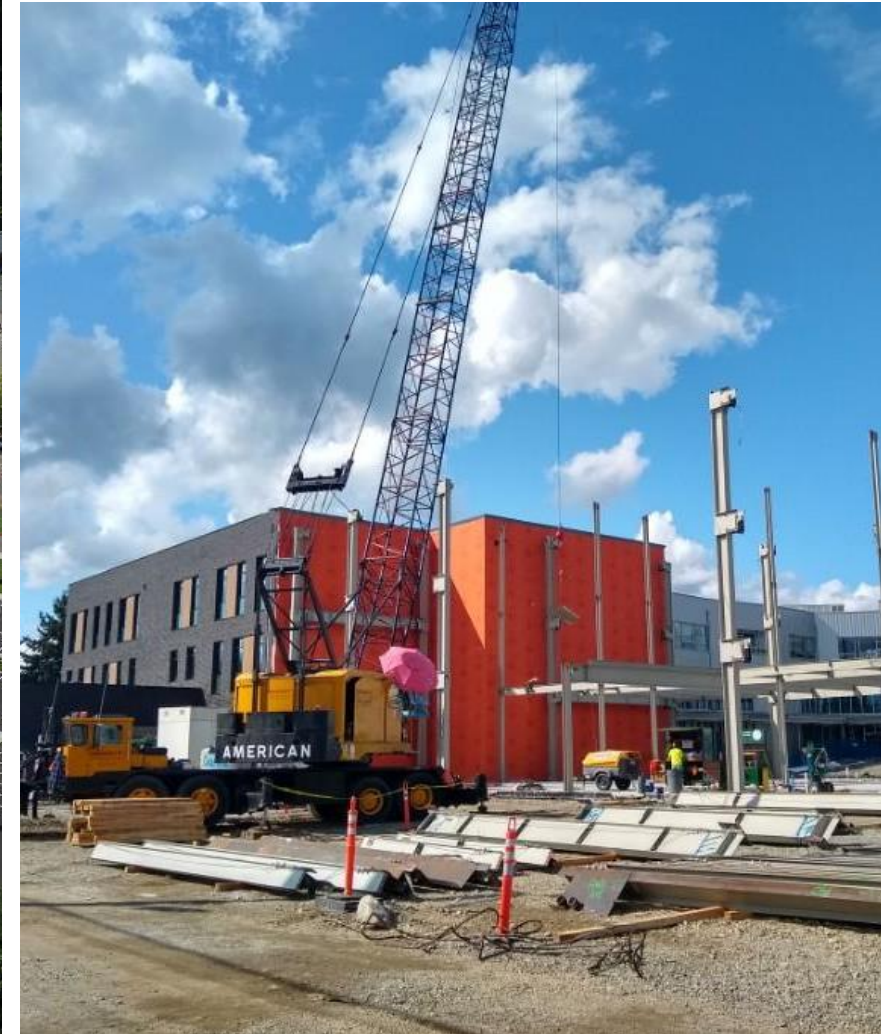
- Exterior framing begins – October 2019
- New ticket booth complete – October 2019
- Community Open House – October 26, 2019



Juanita High School



Juanita High School





Timberline Middle School

(New Middle School Redmond Ridge)

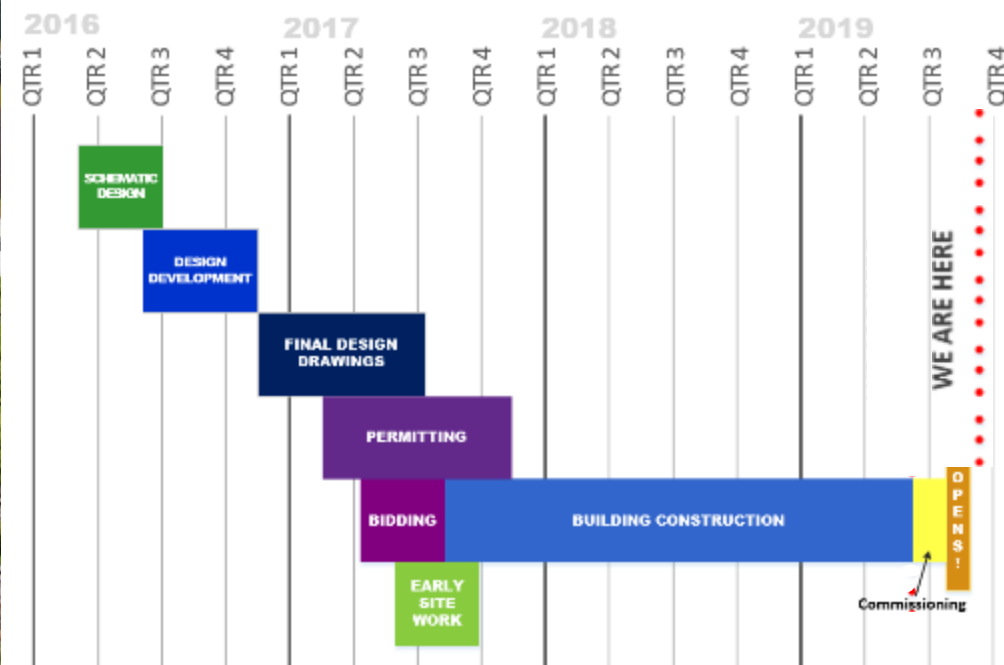
Location: 9900 Redmond Ridge Drive NE, Redmond

Square Footage: 134,762

Capacity: 900 students

Spaces: 24 standard classrooms plus instrumental and vocal music, special education, art, lab science, CTE, library, cafeteria/commons with stage, & gymnasium

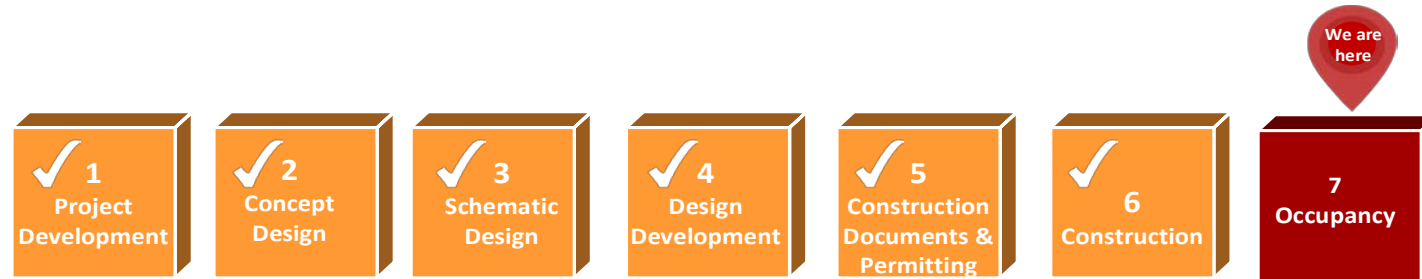
Opened: September 2019





Timberline Middle School

(New Middle School Redmond Ridge)



Accomplishments

- School Opened – September 2019
- Synthetic Track Install & Stripping – September 2019

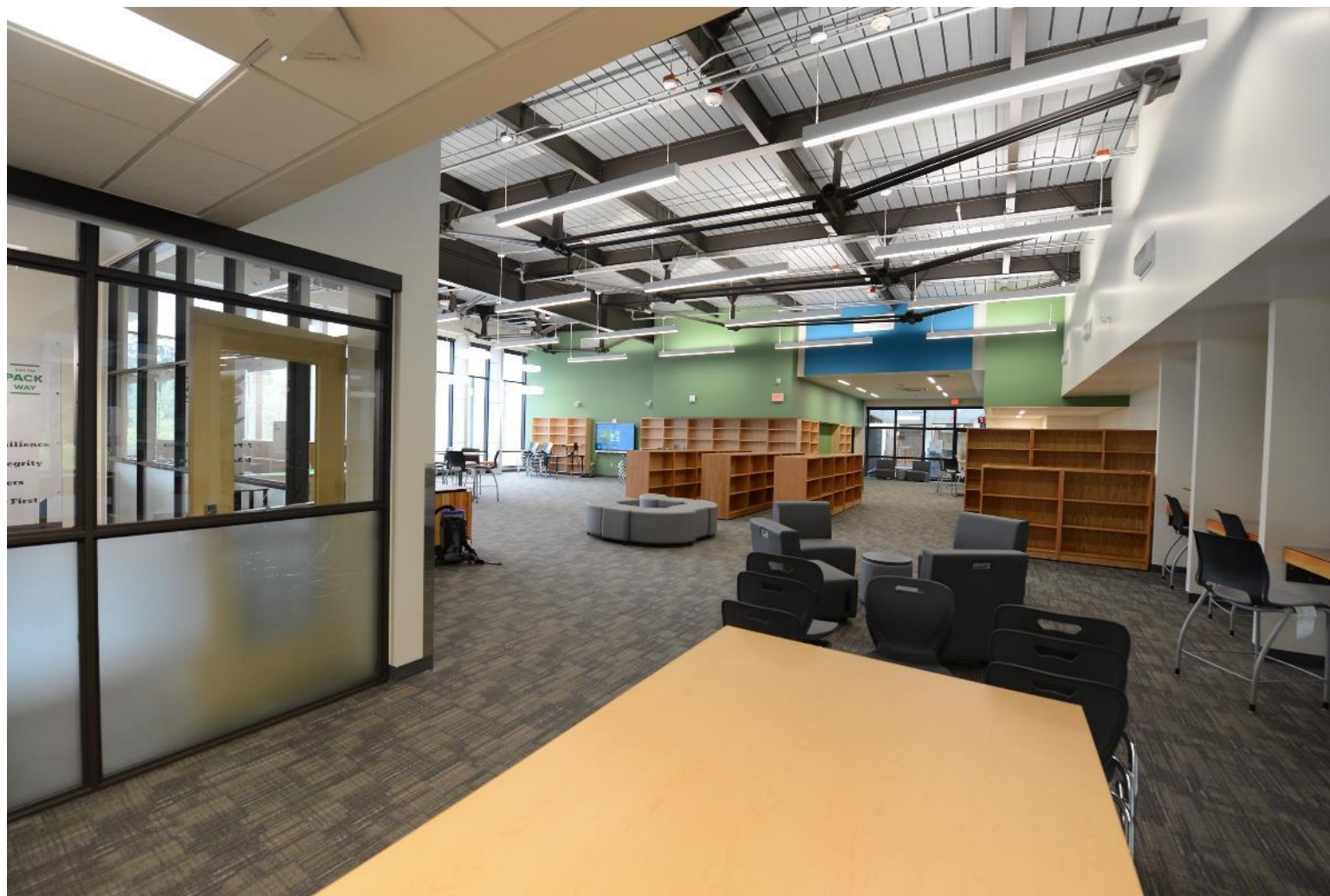
Upcoming

- CTE Space Culinary Classroom Completion – October 2019
- Community Open House – October 12, 2019



Timberline Middle School

(New Middle School Redmond Ridge)





Timberline Middle School

(New Middle School Redmond Ridge)





Peter Kirk Elementary School Rebuild & Enlarge

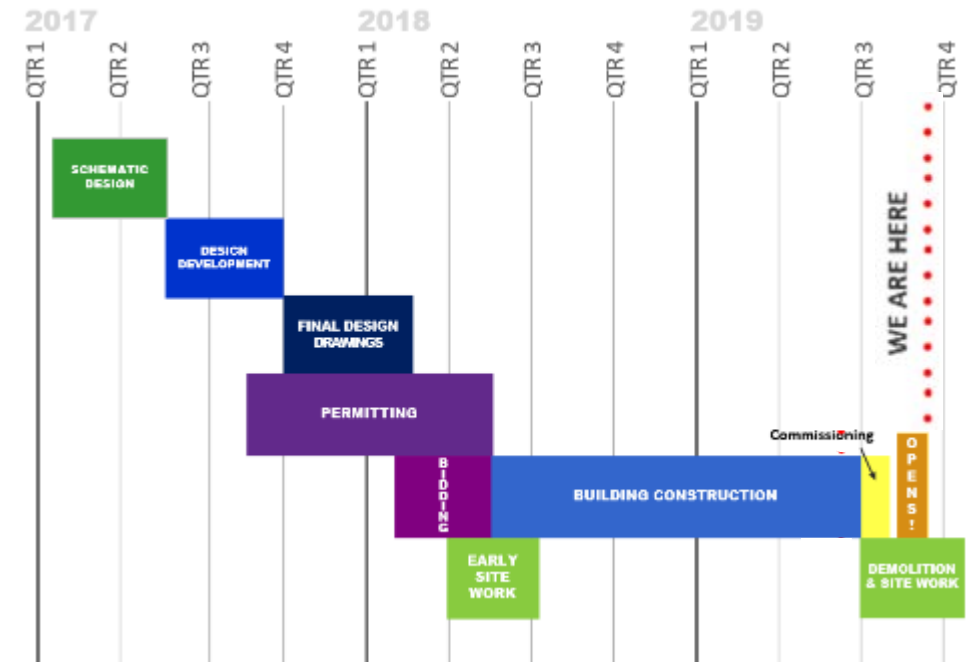
Location: 1312 - 6th Street, Kirkland

Square Footage: 78,236

Capacity: 690 (current student-teacher ratio)

Spaces: 30 standard classrooms plus music, art/science rooms, ELL/SN/special education, library, cafeteria/commons, gymnasium, & outdoor covered play area

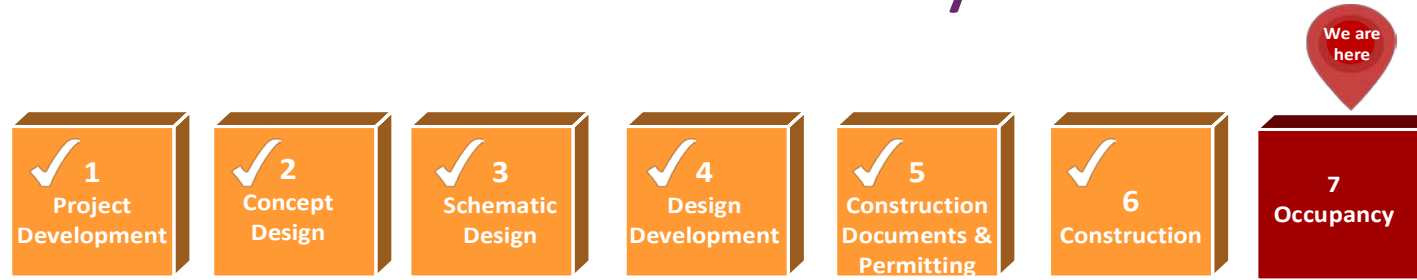
Opened: September 2019



Finished
Site Plan



Peter Kirk Elementary School Rebuild & Enlarge



Accomplishments

- School Opened – September 2019

Upcoming

- Playground, Playfield and Parking – October 2019
- Community Open House – October 24, 2019



Peter Kirk Elementary School Rebuild & Enlarge





Margaret Mead Elementary School Rebuild & Enlarge

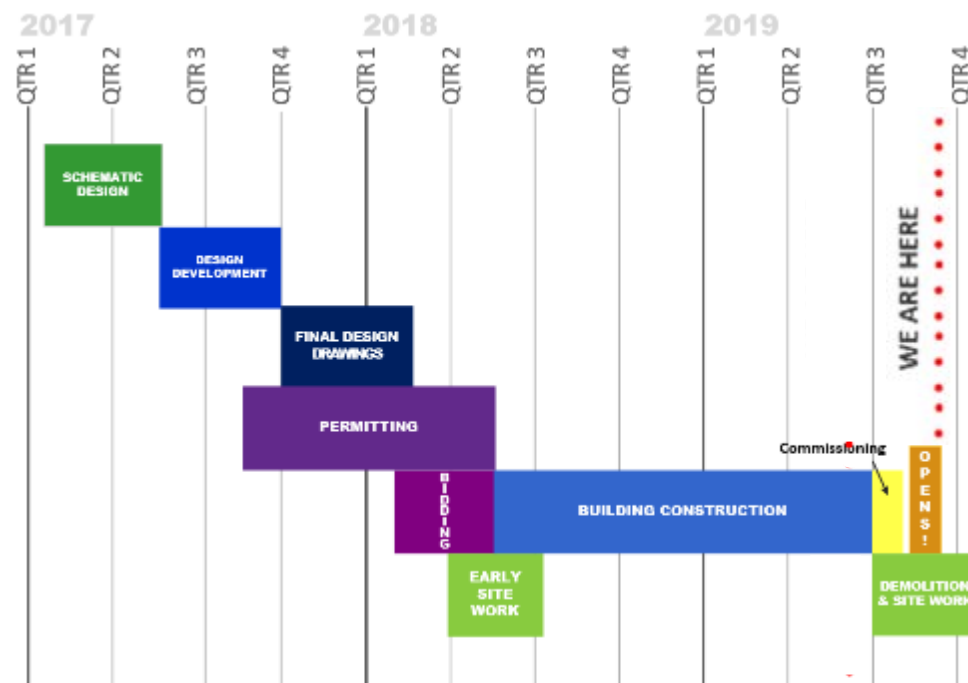
Location: 1725 - 216th Ave NE, Sammamish

Square Footage: 78,236

Capacity: 690 (current student-teacher ratio)

Spaces: 30 standard classrooms plus music, art/science rooms, ELL/SN/special education, library, cafeteria/commons, gymnasium, & outdoor covered play area

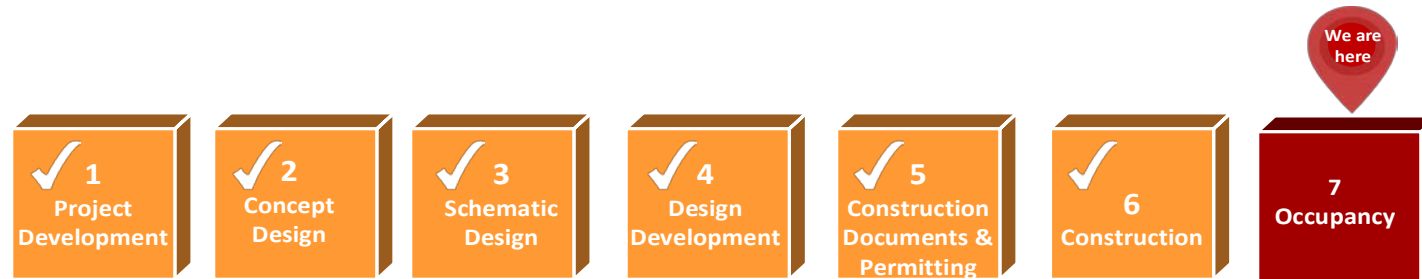
Opened: September 2019



Finished
Site Plan



Margaret Mead Elementary School Rebuild & Enlarge



Accomplishments

- School Opened – September 2019

Upcoming

- Playground, Playfield and Parking – October 2019
- Community Open House – November 14, 2019



Margaret Mead Elementary School Rebuild & Enlarge



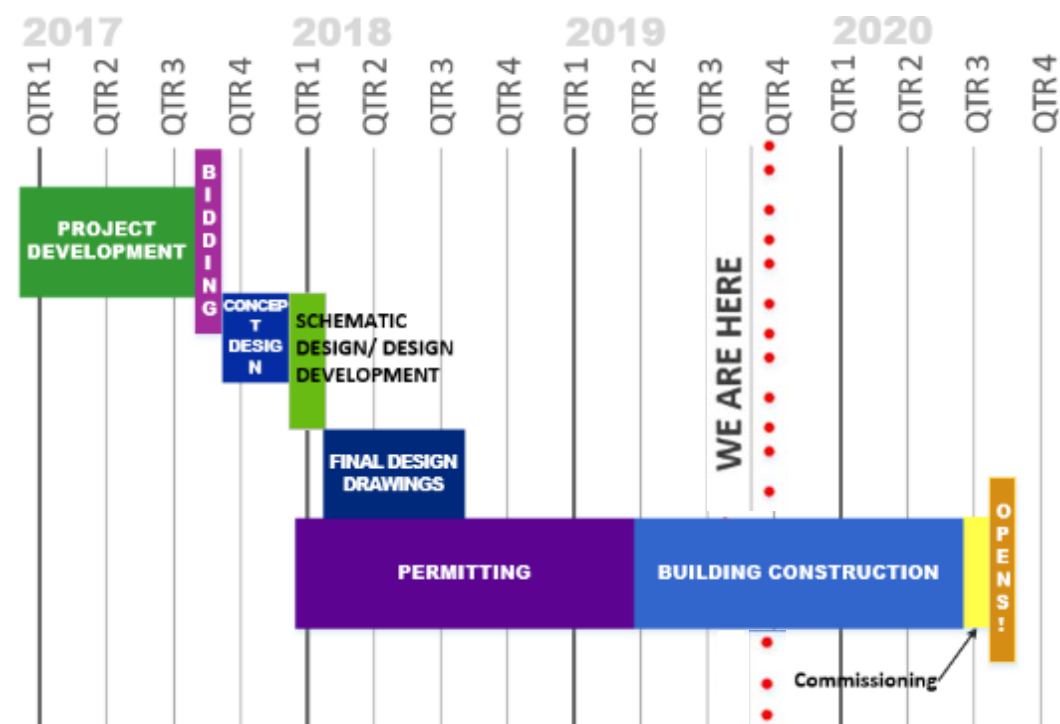
Old Redmond Schoolhouse

Location: 16600 NE 80th Street, Redmond

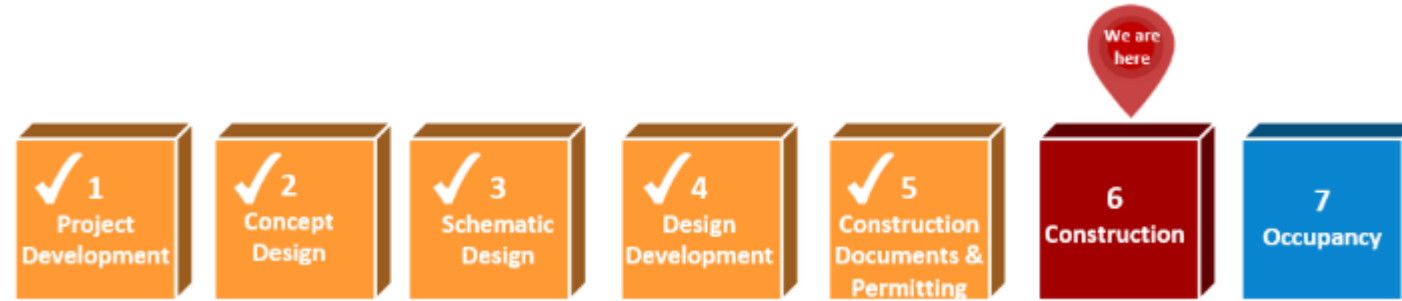
Square Footage: 40,000

Spaces: 10 preschool classrooms, gymnasium, cafeteria and commons

Planned Opening: September 2020



Old Redmond Schoolhouse



Accomplishments

- New roof installation in progress – September 2019
- Exterior masonry restoration in progress – September 2019

Upcoming

- Window and Exterior Cladding – October 2019
- Interior Improvements – November 2019

Old Redmond Schoolhouse



Completed Projects

Baker ES

Barton ES

Explorer



Opened 2018-2019
School Year



Opened 2018-2019
School Year

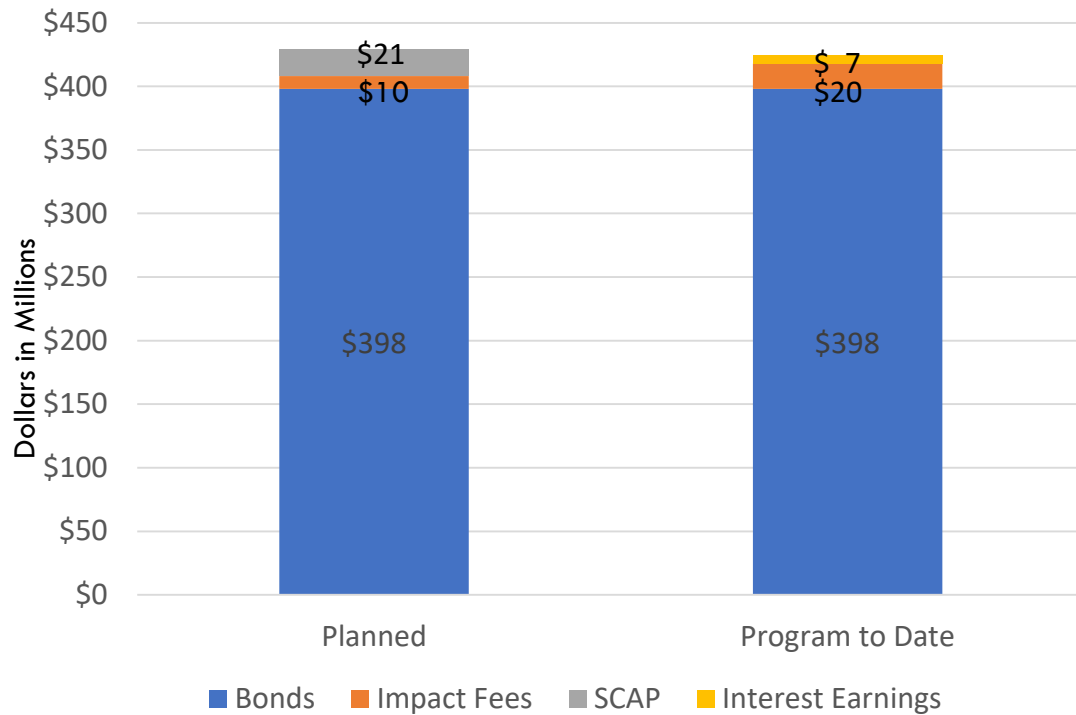


Opened 2017-2018
School Year

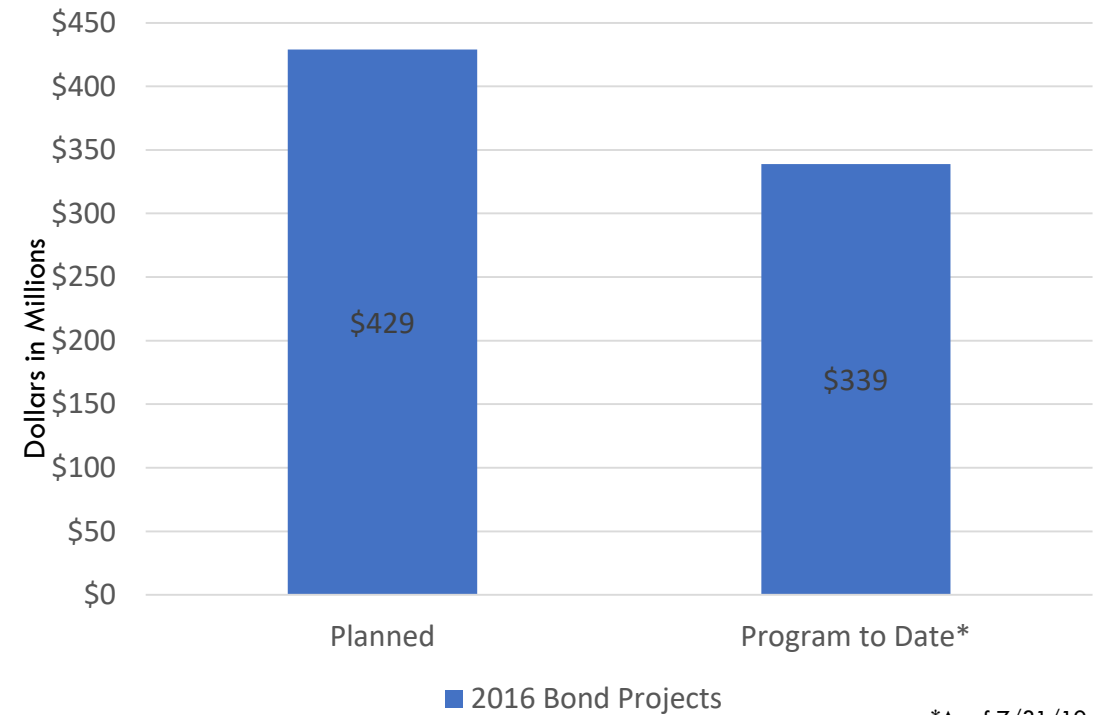


Program Cost Update

Program Revenues



Program Expenditures



*As of 7/31/19

Program Cost Update

OSPI approved State Construction Assistance Funds (SCAP) for Kirk, Mead and JHS projects – planned at \$21 million

- **Funds are received at end of projects**
- **Anticipate receiving funds over the next two years**



26 2018 4-year Capital Levy Projects

- Facilities

2019 Summer Projects

- Building Systems & Improvements
- Athletics, Fields, Site and Playground Improvements
- School & Program Improvements
- Code, Compliance, Health & Safety





Completed Projects - Summer 2019

Eastlake High School Classroom Conversions





Completed Projects - Summer 2019

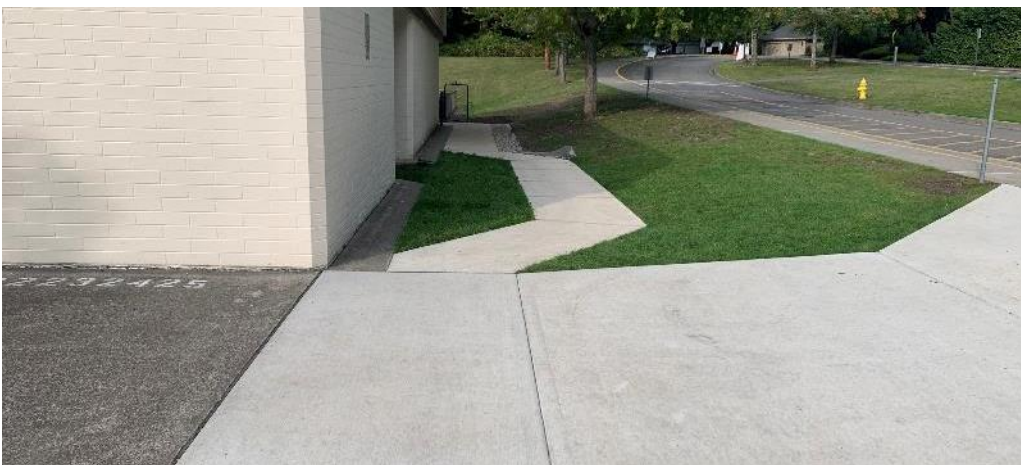
Multiple Site Roof Upgrades





Completed Projects - Summer 2019

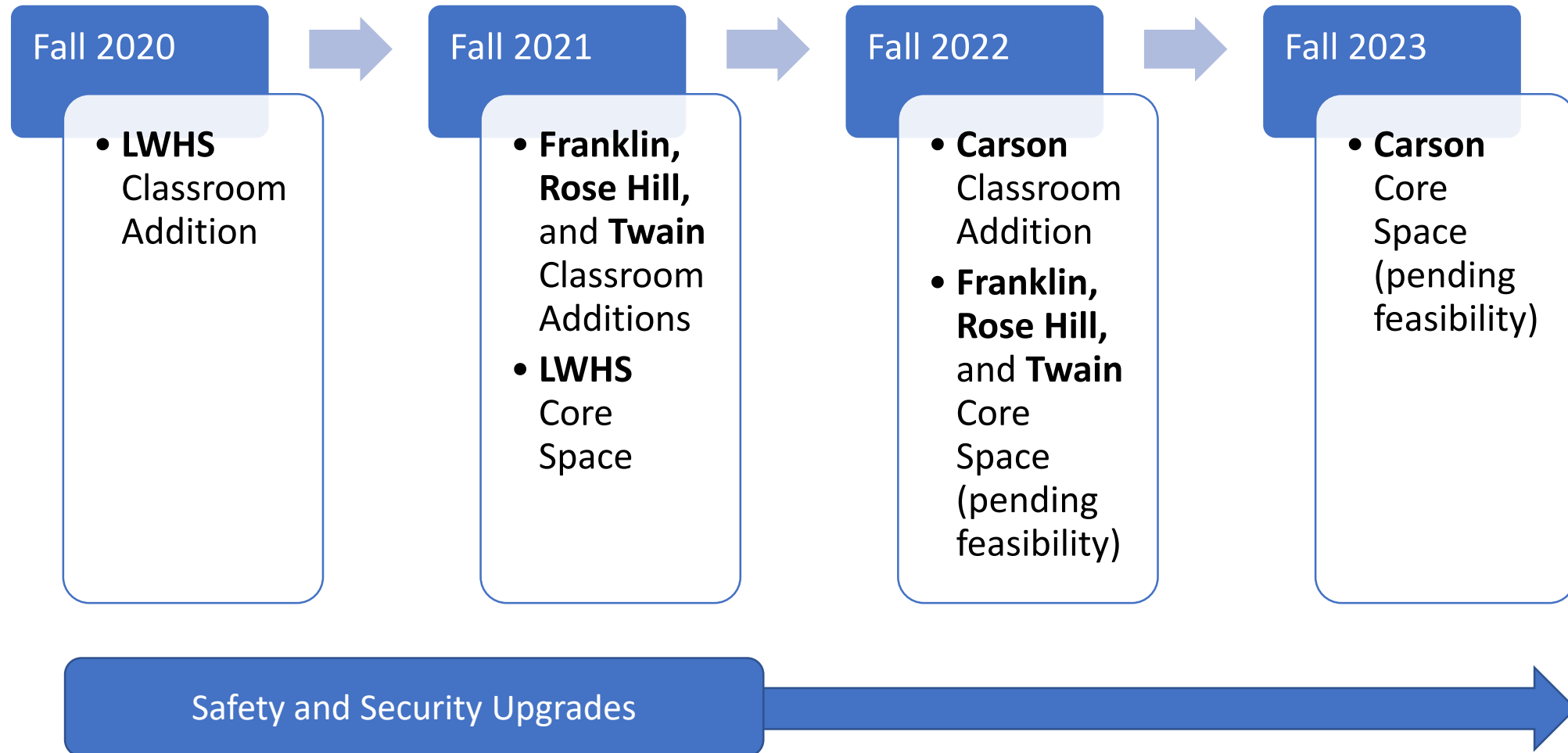
Rockwell Elementary School ADA Upgrades



2019 6-Year Capital Projects Levy Update

- Critical Projects for Growth – Permanent Classroom Additions at 5 schools
- Core Facilities/Common Spaces
- Safety and Security Upgrades

Project Timeline



Classroom Addition Project Locations

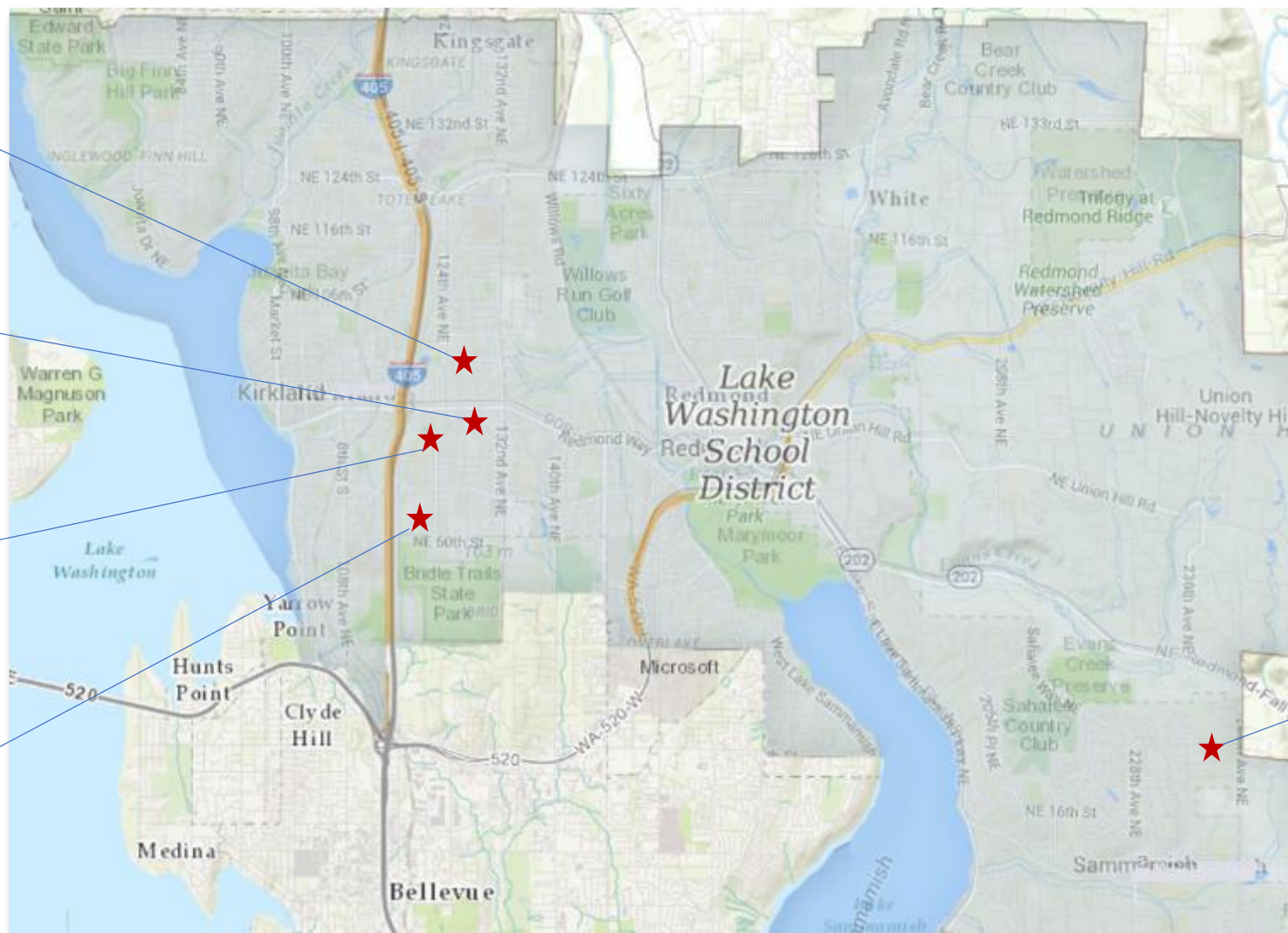
Twain Elementary
Addition – 4
Classrooms

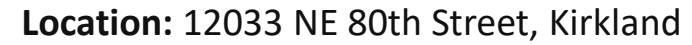
Rose Hill Elementary
Addition – 8
Classrooms

Lake Washington HS
Addition – 20
Classrooms + Core
Expansion

Franklin Elementary
Addition – 8
Classrooms

Carson Elementary
Addition – 4
Classrooms





Capacity: 531 permanent capacity. Net capacity 2,016

Planned Opening: September 2020

2018				2019				2020			
		Summer				Summer				Summer	
Q1	Q2	Q3	Q4	Q1	Q2	Q3	Q4	Q1	Q2	Q3	Q4
SCHEMATIC DESIGN						WE ARE HERE					
		DESIGN DEVELOPMENT									
				FINAL DRAWINGS							
					PERMIT						
					CONSTRUCTION						
											O P E N

Lake Washington High School Addition



Accomplishments

- Mobilization and Sitework: June 2019
- Bidding Complete: July 2019
- North Parking Lot Open: September 2019

Upcoming

- Concrete Slab: October 2019
- Steel Assembly: November 2019
- Building Envelope Enclosure: February 2020

Lake Washington High School Core Expansion



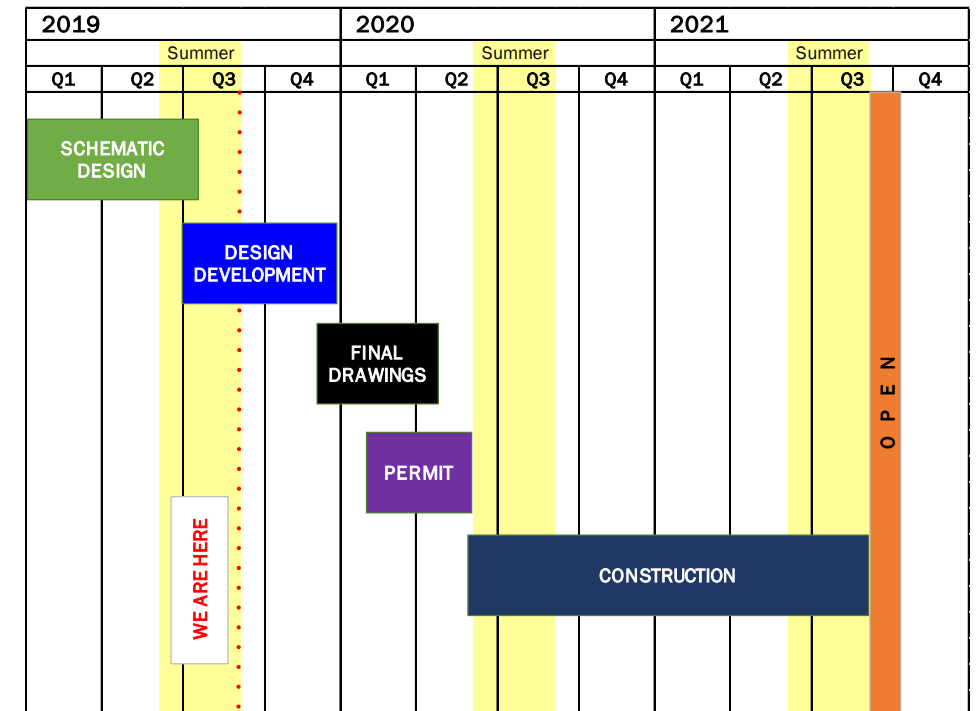
*Concept Design only

Location: 12033 NE 80th Street, Kirkland

Square Footage: Approximately 22,000

Spaces: New Auxiliary Gym and Commons Expansion

Planned Opening: September 2021



Lake Washington High School Core Expansion



Accomplishments

- Concept Design: May 2019
- Schematic Design: September 2019

Upcoming

- Design Development: October 2019
- Construction Documents: May 2020
- Project Bidding: February 2020
- Construction Phase: June 2020 – August 2021

Franklin – 8 Classrooms
Rose Hill – 8 Classrooms
Twain – 4 Classrooms

Elementary School Additions

Kirkland Area

Accomplishments

- Concept Design - May 2019
- Schematic Design - August 2019
- Pre-Submittal Meeting (Kirkland) - August 2019

Upcoming

- Informational Open Houses – November 2019
- Design Development - December 2019
- Construction Documents - June 2020
- Project Bidding - August 2020
- Construction Phase - July 2020 – August 2021

Accomplishments

- **Concept Design - May 2019**
- **Schematic Design - August 2019**

Upcoming

- **Preapplication Meeting (Sammamish) - March 2020**
- **Design Development - July 2020**
- **Construction Documents - February 2021**
- **Project Bidding - June 2021**
- **Construction Phase - July 2021 – August 2022**



Elementary School Additions

Core Expansion

- Concept Design: May - August 2019
- Once addition bids are finalized, available funds for core expansion will be determined – May 2020
- Continue feasibility study - May 2020

Safety and Security Upgrades



High School Secured Entry Modifications – Eastlake, Redmond, and Lake Washington High Schools

- **Concept Design underway**
- **Timing of Construction is to be determined**

Elementary School Security Cameras

- **Timing of Installation is to be determined**

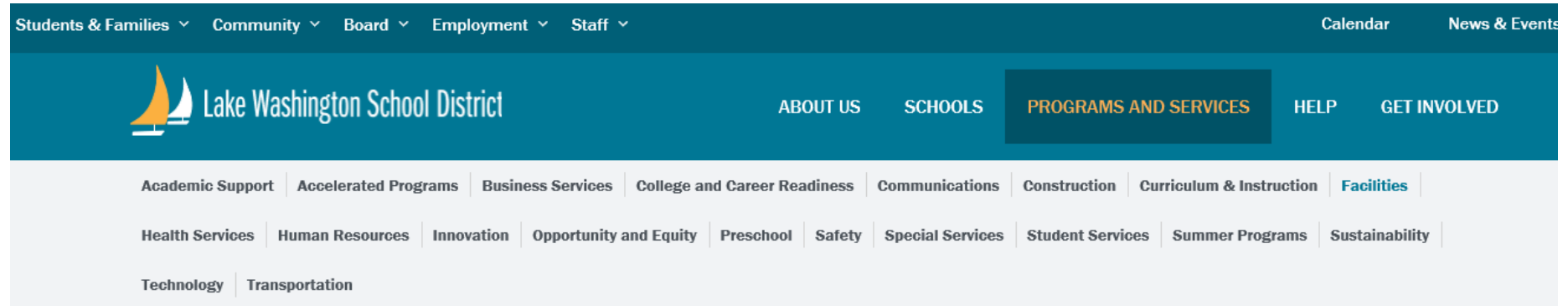
42 Communication

Communication

- Monthly Bond e-news updates
- Continued photography and video stories on projects posted on website, social media, etc.
- Facebook Live broadcasts showing milestones of construction
- Annual Bond progress information mailer sent to all district households each Fall
- Grand openings and Community Open Houses – October/November

www.lwsd.org/buildingonsuccess

More information



[HOME](#) > [PROGRAMS AND SERVICES](#) > [FACILITIES](#) > [CONSTRUCTION](#)

Construction

The district's growing enrollment is evidence that LWSD attracts families to the area it serves in Kirkland, Redmond and Sammamish, Washington. To serve that growing enrollment, the district is "Building on Success." That's the district's long-term plan to continue to build schools and to provide quality learning environments and experiences.

Current Construction: 2019 Capital Projects Levy

In April 2019, voters approved a capital projects levy that provides:

- Classroom space for 1,052 students by providing additions at five schools for a total of 44 new classrooms
- Expansion of commons and auxiliary gym space at Lake Washington High School (LWHS) and expansion of core facilities at the identified elementary schools where feasible.



HAVE QUESTIONS? LET'S TALK!
[CLICK HERE TO ASK QUESTIONS](#)

[SIGN UP FOR CONSTRUCTION EMAIL
UPDATES](#)

45 Building on Success

