



Early Years Centre outside play

What factors influence student achievement?

I have written before about John Hattie's Visible Learning research (<https://www.visiblelearningplus.com>) which looked at all education research and tried to draw up a list of what factors most impact student achievement. In 2017 he updated his research with some of the following findings being of interest to us at NIS.

The biggest impact is related to a teacher attribute, the most important one being the teachers' estimates of student achievement. In other words when teachers believe in the students' capacity to learn, when they believe in developing student talent and when they support their students their achievement is impacted. The most important factor for teaching and instructional strategies is the use of feedback given to students about their learning. Research suggests that students respond well to these personal interventions which are specific, timely and transparent.

The biggest impact for students on their achievement is related to their prior knowledge and background. That is to say that students who have done well in school A should do well after transitioning to school B. As we are a school with a transient community we meet students where they are and help them develop to new, higher levels of achievement. One factor that has a significant impact is if the students are involved in their own assessments, which involves them approximating their own achievement based on clear criteria. Although this may seem more obvious in the MYP and DP years this is also pertinent in Early Years where the children talk about their learning which is documented within our Reggio influenced programme.

Content

From Mr. McLellan	01~02
Welcome New Students	02
No Parking Notice	02
Fall MAP Assessments	03
Parent Access to School Campus	04
Library News	05
MS Counselling News	06
PS Variety Show	07
NIS Activities	08~09
Board Meeting Minutes	10
How to update passport info	11~14
Link for Lunch Menu, Swimming Pool	
Schedule & Community Events	15
PTA News	16
PTA Meeting Minutes	17~18
Trivia Night	19
Festival Weekend	20
Food Court Poster	21
September	22
Snow Japan 2020	23

Contact Information

Nanjing International School, Xue Heng Lu 8, Xian Lin College and University
Town, Qi Xia District, Nanjing, P.R. China, 210023

www.nischina.org

Tel: +86 25 8589 9111 Email: enquiries@nanjing-school.com

At a school level the most significant impact on student achievement is the school leadership. A school leadership that encourages collective teacher efficacy, a sense of collaboration and commitment to a clear mission and strategy is more likely to impact positively upon student achievement.

You may be wondering what student achievement actually is and how it is measured. My short answer is simple, although academic achievement is only one component of talent development it is essential in developing personal excellence.

Have a sensational September,

Laurie McLellan

lauriemclellan@nanjing-school.com

Upcoming Events:

The Upcoming Week is W5

Wednesday 11th September

Yearbook Mugshots

Friday 13th September

Mid Autumn Festival

NO SCHOOL

Saturday 14th September

EUCC Badminton @NIS

We are delighted to welcome these two new students to NIS this week!

Zachary	K2
Jerry	G6



IMPORTANT NOTICE : NO PARKING IN SCHOOL THIS WEEKEND

Due to our Festival Weekend with our Pfrang Music Night and NIC Welcome BBQ taking place over Saturday and Sunday there will be NO PARKING in school this weekend.

See poster in this bulletin for more information on these events.

Thank you for your understanding.

suenorthcott@nanjing-school.com

Fall MAP Assessments: September 16-27

Starting the week of September 16th, students in Grades 3- 10 will take the MAP (Measures of Academic Progress) assessments for Reading and Maths. These online tests are administered by NWEA (Northwest Evaluation Association:) <https://www.nwea.org/>.

“MAP assessments are adaptive, which means that every student gets a unique set of questions based on responses to previous questions. As the student answers correctly, the questions get harder; if the student answers incorrectly, the questions get easier. The purpose [...] is to determine what the student knows and is ready to learn next.”

(<https://www.nwea.org/blog/2017/12-common-questions-parents-ask-map-growth-assessment/>)

MAP provides us with assessment data twice annually that help track student growth and better ensure that learning is appropriate for the needs of each student.

Would you like to try a practice test? Click [here](#):

Both the username and password are: **grow**

Beyond these preparations, students should simply get a good sleep, eat a healthy breakfast, and come to school ready to give their best effort.

Reports will be sent home to parents in early October. If you have any questions, please feel free to contact me.

Kasson Bratton

Deputy Director-Learning

kassonbratton@nanjing-school.com

Campus Access for NIS PARENTS

Please refer to the access guidelines below. Their purpose is to maximize safety and student learning.

Centre Access for NIS PARENTS	
Access to NIS campus beyond the guard gate	<p>Monday through Saturday: 5:30am-9:30pm.</p> <p>Sunday: Scheduled activities or fitness room use.</p>
School Holidays	As posted in the Weekly Bulletin.
Fitness Room Access	5:30am-9:30pm daily, unless otherwise posted.
NIS Pool	During posted community swimming times. See weekly bulletin for details.
Centre Cafe	During posted opening times. Children in Grades PK-10 must be supervised.
Learning Spaces Access for NIS PARENTS (Beyond the internal security barrier)	
Outdoor Spaces (Spider Web, Courtyard Play Structures, Track, Pitch, Garden, etc.)	<p>Monday-Friday: Morning drop-off and from end of school day 6:00pm.</p> <p>Saturday: 7:30am-6:00pm.</p> <p>Sunday: For NIS-approved community activities only.</p>
NIS Gyms	Outside of the school day, for NIS-approved community activities only.
Library	<p>Monday-Friday: 7:45am-4:15pm.</p> <p>Saturday: As posted. See weekly bulletin for details.</p> <p>Children in Grades PK-9 must be supervised by a parent after 3:00pm.</p>
All Other Learning Spaces (Classrooms, Design Centre, Early Years Centre, PAC)	Student morning drop-off, by invitation of the teacher, and/or during scheduled events (i.e. Conferences, Open Houses, Scheduled Tours, Parent Coffees).
Cafeteria	30 Minutes after the end of the school day. Children must be supervised.
Pick-Up	Students should be picked up by parents from designated pick-up locations.
Bathrooms	Parents should only use adult bathrooms.

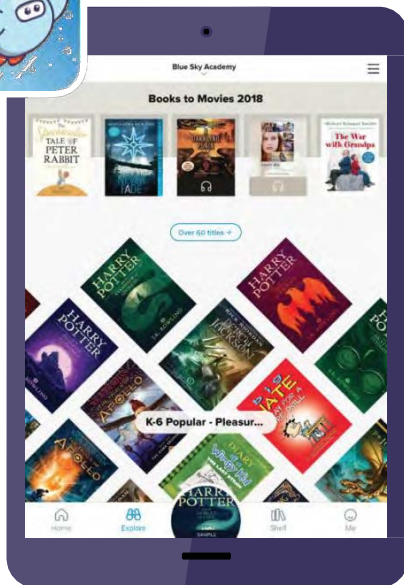
kassonbratton@Nanjing-school.com

Open a world of reading

For easy access, our school's setup code is

nanjingcn

Use your ID number as both username & password.



Sora

The student reading app

Get Sora and
start reading today!



To use on your laptop: visit <https://soraapp.com>

Brought to you by NIS and built with ❤️ by OverDrive.

See Mrs. Romero in the library for help or questions!
Parents need to be set up with an account first...students & teachers are ready to go!

Stuck in the Middle

The Ever Changing Brain.

Come join our discussion group to gain a better understanding of child brain development and how to help you navigate their changing needs.

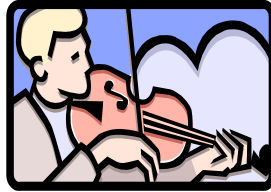
Why does my child act
this way?
Why does my child think
this way?
How can I better talk
with my child?



When: Thursday, September 12th @ 8:15

Where: Large Group Room

Who: Middle School Counselor, Lance Yuen



Event: Primary School Variety Show

Date: Friday 11th October, 2019

Time: 8:10am

Venue: NIS theatre.

Auditions will be held in the Performing Arts room during the second half of lunchtime at the following times:

Friday 6th September

Gr.5 students

Monday 9th September

Gr.4 students

Tuesday 10th September

Gr.3 students

Wednesday 11th September

Gr.2 students

Thursday 12th September

Gr.1 students

Talent Show Criteria:

- 1. Each act must be no longer than 2 minutes**
- 2. Make eye contact with your audience**
- 3. Have lots of facial, vocal and body expression if your act requires it**
- 4. It should be well rehearsed/polished**
- 5. Have fun!**

***The students will find out by the end of the day on Tuesday 17th September whether or not they have been successful.**

The PS Student Council wish all of the students auditioning the best of luck.



ACTIVITIES

Athletics

It is now coming up to Week 5 and CISSA Touch Rugby trip to Shanghai is fast approaching. As CISSA Touch Rugby comes to an end so CISSA Soccer will start. Middle School Soccer and ACAMIS Table Tennis are starting this coming week – there is still time to sign up!!



Swimming



Mini-Squad selection took place last Friday. The highest number of 'Minis' were recorded since last year, with 34 of them trying out.

Our 'littlies' are now spread over 2 groups so that the majority of swimmers have an opportunity to take part.

Our older students practiced their team building skills.

Community Activities

Please remember to pick up your payment slip. There are still a few seats available for some community activities like Tabata, HSK3 preparation course, English Beginners and for some swim lessons. The lessons will start next week (September 9th). Please feel free to contact me with your concerns or questions.

Your Community activity coordinator
Katja Schubert

	Payment Slip
Activity Name :	_____
Participant Name (in Capital) :	_____
Amount :	_____



Sign up on Veracross for the following volunteering opportunities:

- English Conversation Volunteers – Now
- Volunteers for the NIC Barbeque – Sep 8th
- Learning 2 student Volunteers – Oct 18-19th
- ACAMIS Volleyball Tournament Volunteers – Oct 24-26th
- PTA Autumn Festival – Nov 2nd
- Santa Fun Run – Nov 8th
- Royal Family Christmas Market – Nov 8-9th
- NIC Christmas Benefit Concert -Nov 30th
- NIS Invitational Basketball – Nov 30th

Updates

Coming up!

CISSA Touch Rugby @ Shanghai 20 – 21 Nov

NIS Volleyball Invitational @ NIS 21 Nov

Local Swim Meet @ NIS 21 Nov

Contact us:

dannyclarke@nanjing-school.com
annayuen@nanjing-school.com

kathrinlammers@nanjing-school.com
cac@nanjing-school.com



ACTIVITIES

ASAs, Clubs, Performing Arts, Service

We are always looking for new opportunities for your children. The catalogue for Cycle 2 will be published in October, so if you have an idea for an ASA, a Club or a Performing Arts or Service experience, then we would love to talk to you. Come share your passion with the students.



Reasons to do Service (Service as Action/CAS)

Service learning projects can help us understand that we have an important place in our community, in our world. We may all get busy with our lives; friends, family, sports or academics, and we forget that we are part of a larger community. Service reminds us all that we can develop a greater sense of responsibility, empathy, acceptance of diversity, and concern for others. It also helps us to lead more balanced lives. No matter what our age or our ability, we can all do something to help. If you would like ideas on how you and your family can help in the community, please stop by the Activities Office.



Grade 5 Discover China Information Session

Grade 5 parents are invited to a session to learn about what the students will do on their first Discover China. The session will take place on October 11th, after the PS Variety Show. More Information to come.

Grade 6-11 Discover China Parent Coffee Morning

Save the date! On Wednesday, October 9th, we would like to invite you to a general information session about your child's Discover China experience. We will provide itineraries, packing list and QR codes. It will take place from 8.10 – 9.00 am in the MS Large Group Room. We hope to see you there!



Travel Document

In Preparation for Discover China and all other overnight field trips, the Activities office is collecting copies of students' valid travel documentation. Foreign Students should email in a photo of their passport and valid Chinese visa to Ms. Anna. Students holding China, Hong Kong, Macau or Taiwan ID cards, must send in a photo of the front and the back of the card. Please do not hesitate to contact us in the Activity Office for clarifications.



NIS BOARD – MEETING

Date: August 28th 2019	Present: Andrea Raviolo, AR; Dylan Barnes-Loffi, DB; Julia Güsten, JG; Laurie McLellan, LM; Rachel Shin, RS; Sonia Jaeger, SJ; Yi Zhang, YZ; Angela Romero, ARo.	Status of Agenda Item: For Action by Board = ACT For Agreement by Consent = CNS For Information Only = FIO
Time: 6.30pm		
Location: Board Room		
	Apologies: Patrick Heckelmann, PH Invitee(s): Arek Owczarek, AO	
	Minutes: Angela Romero	
Agenda Item	Discussion/Conclusions	Action + Person(s) Responsible
1. Assign Board officers, committees & minute taker	Chair: JG Vice-chair: PH Finance Committee: AR, YZ, PH Governance: DB, RS, SJ Minute Taker: ARo Chair of Governance: DB Chair of Finance: AR Director Evaluation Committee: JG, YZ, SJ	CNS
2. Update on the HUB and campus development	AO updated the Board on changes in building regulations and the impact on campus development projects.	FIO
3. Director's Report	Laurie presented the report.	FIO
4. Visit to ISB and WAB	Will involve meetings with board members of those schools and other school personnel to see how the school mission & strategy has impacted the physical structures of the school.	FIO
5. Set next meeting dates	Finance: September 18, 2019 6:30pm Board Room Governance: October 9, 2019 8:00 am Laurie's office Board: September 23, 2019 6:30 pm Board Room Annual General Meeting: Sept. 27, 2019 8:15 am	CNS
6. Meeting Reflection	Members reflected positively about the meeting.	FIO
Minute Taker's Name: Angela Romero		



HOW TO UPDATE PASSPORT INFORMATION

Important information about passports and visas

Please update Veracross with current student passport and valid China visa details so the Activities Office can begin booking tickets and accommodations for Discover China Trip Week 2019.

All FOREIGN students must have a valid passport and a valid visa in order for the Activities Office to book flights, train tickets and hotels. Please note that a valid visa and/or entry stamp are essential for buying tickets and making hotel reservations.

Students who intend on using their CHINESE ID cards as their travel document are asked to send a photo or a scan of their ID Card via email to elaineliu@nanjing-school.com
HONG KONG, MACAU and TAIWANESE students are also asked to send photo or a scan of their Chinese Government issued ID passes to elaineliu@nanjing-school.com

Please see the pass samples views as below:



Chinese ID sample



Chinese government issued
pass sample for
Hongkong and Macau resident



Chinese government issued
pass sample for Taiwan resident

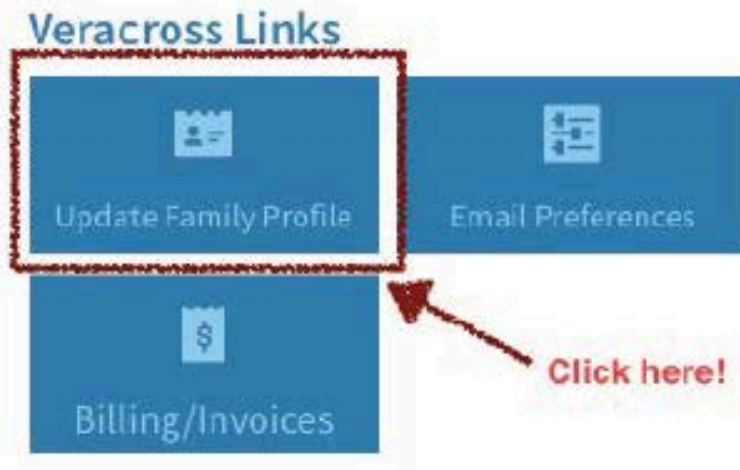
If your child/children hold Foreign Permanent Resident ID Card(s) 中华人民共和国外国人永久居留证 issued by Ministry of Public Security and you want use it/them as the travel documentation in Discover China Week, please send information via email elaineliu@nanjing-school.com

For FOREIGN passport holders ONLY: please refer to the instructions on how to update your passport and visa documentation.

Step 1:

Log into Veracross via <https://accounts.veracross.com/nis/portals/login>

Go to "Update Family Profile" then "Citizenships & Passports"

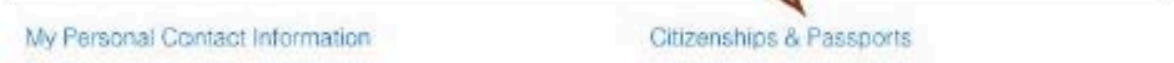


My Family: Information Review

Instructions

Please keep your information up to date. Thanks.

1. Click on the information tile to view the info. detail.
2. If you want to make change, please click on blue "Edit" button on the information window.
3. After you make change, please "Save".



Step 2:

Add or update passport information:

save x remove cancel

First Name

Country

Primary Citizenship? *

Passport Information:

Issue Date *

Expires On *

Passport Number *

**Indicates a required field*



Input passport Name, Country then chose Primary Citizenship "yes"

save x remove cancel

First Name

Country

Primary Citizenship? *

Passport Information:


Issue Date *

Expires On *

Passport Number *

**Indicates a required field*

Input all the * information here!!



Step 3:

Add or update China visa information :



Please complete the information update at your earliest convenience.
If you have any questions, please do not hesitate to contact the Activities Office.

Thank you for your understanding!

Anna Yuen, Activities Coordinator
annayuen@nanjing-school.com

Elaine Liu, Secretary to the Activities Coordinator
elaineliu@nanjing-school.com

Lunch Menu

<http://www.nischina.org/page.cfm?p=571>



Community Events

<http://www.nischina.org/page.cfm?p=534>



Swimming Pool Calendar

<http://www.nischina.org/page.cfm?p=585>



PTA NEWS

2019-2020

PTA COMMITTEE

President: Benedicte Thomasson
 Vice President: Yvonne Zollner
 Vice President: Gina Ryu
 Vice President: Ying Liu
 Treasurer: Gina Policelli
 Secretary: Jo Laycock

PTA EVENTS

Trivia Night - September 20th

**Coffee Morning - 8:15am
 September 25th**

PTA SHOP

PTA Shop Hours
Tuesday 2:00 - 3:00
Friday 2:30 - 3:30



• **PTA Trivia Night is Friday September 20th.** For a 100¥ you will get delicious food, one welcome drink, fun, games, friends and the chance to show off your trivia knowledge! This is an adults-only event. We will have tables of 6-8 people and you will answer trivia questions and compete for a trophy.

You don't need to organize a team before the night! Please note that the date printed in the NIS Calendar is not correct. Ticket sales will be in the NIS Foyer before and after school this week on Monday 9th and Wednesday 11th of September. See the Trivia Night poster for more information. We hope to see you there!

- **PTA Birthday Cupcakes** will be provided by the PTA on **September 11th** for all teachers and students with birthdays in August and September.
- **No school on Friday 13th of September** - enjoy mid-autumn Festival!
- **PTA Coffee morning** is coming up on **Wednesday September 25th** at 8:15am. Come along to hear teachers and members of our community talk about current issues in our school.

To join the volunteer group for any of our PTA events, please contact Benedicte Thomasson, Yvonne Zollner, Gina Policelli or Sue Northcott. Or contact us on at ptapresident@nanjing-school.com

Welcome and thanks to everyone for attending - Benedicte.

1. **Laurie:** Welcomed everyone. The current make up of the school is approximately 1/3 Korean, 1/5 ethnic Chinese and the rest is a mix. The level of English of these "non English speakers" is higher than previously. The Centre Cafe is the space for parents. Use it - chat, smile and get to know each other!
Find the person you need to speak to for your specific question - we are here to help you.
Let's have a superb year developing talent in our inclusive community!
2. **Kasson:** Introduced learning leadership team.
Please sign up for the upcoming Parent LED Conferences. The purpose is to learn more about your child, which is important for developing personal excellence.
Thanked the PTA for doing a great job. Research shows that when parents are involved in their children's education the outcomes are better.
3. **Gretchen:** Introduced counselling team including Sunmi Lee who helps as a bridge between nationalities as she is able to translate. They are here for the social and emotional wellbeing of all. The team will be at the next PTA meeting and would like to hear what we as parents would like to know more about and work on. Stop by and see us to chat!
4. **Adam & Junlah:** Will host a forum next Friday (30th) to discuss all things Primary School related including the fantastic new Early Years Centre .
5. **Joe:** The IT department has a new service window. Please try to come by after school if you need help as during the day they are very busy supporting the students.
6. **Benedicte & PTA team:** Excited to introduce this year's team and events. The PTA's aim is to encourage a positive connection between school and home and to help support all students, staff and parents. We want everyone to be included. Ying and Gina are delighted to help with Mandarin and Korean translation and involvement.
Find out what's going on by attending the PTA meetings and joining the "Unofficial Parents Group" on WeChat. All help is much appreciated - please sign the sheet being passed around if you would like to volunteer.
The PTA shop is open every Tuesday and Friday after school. Pre-order hoodies will arrive mid October.
Every student and teacher will receive a birthday cupcake from the PTA during their birthday month.
Suzy Walker and Cheryl Moen are the PTA teacher reps. They help organise teacher volunteers and are always willing to help and advise.
7. **Upcoming events:** ASA cycle one sign-ups open at 1pm today.
Trivia Night will be held on 20th Sept. We are excited to welcome all parents, teachers and staff to this evening of fun, games and trivia. Tickets will be on sale soon. Our very popular Mid Autumn Festival event will be held on 2nd Nov. - save the date!



8. Sue: This is a special day to welcome all our new families to our wonderful community (the thing that “leavers” say they miss the most!).

Please read the weekly bulletin (also available in Korean and Mandarin) - it contains very important information about what’s going on.

Please remember we are a NUT FREE school - see Annie at Chartwells if you need more information.

A Child Protection Workshop will take place this morning. Attendance is mandatory for all parents.

A Veracross help session for new parents will be held immediately afterwards.

Tomorrow morning there will be an iPad training session for new and grade 1 parents.

9. Sue - NIC: Early bird sign-up is currently taking place. 7-8th September will be the Festival Weekend - all are welcome, come along and meet new friends.

10. Katja - Community activities: Sign-ups start today at 4pm. (15 sessions for week-day activities and 10 sessions for Saturday activities.) This is a great way to learn new skills and make new friends. Katja’s office is on the 2nd floor of The Centre. Don’t hesitate to ask for help or offer up your talent for a new class!

11. Kathrin - Aquatics: Introduced some of the team and the different programs available (swim squads, ASAs and community activities). Please see the notice board outside the aquatics office or speak to one of the coaches for more details.

12. Charities: Representatives from each of the charities (Hopeful Hearts, Pfrang, Amy Yang and Ray of Light) explained their background stories, the work they do, how we can help and their upcoming events. Leaflets and cards were available on the tables. Further information can be found on the bulletin board in The Centre foyer.

13. Anna: Help is required with the painting of the production scenery, starting the last week in September. No experience is needed (paint by numbers!). See Anna Mathias to join the WeChat group if you can help.

14. Annie - Chartwells: Explained the lunch process for all students. Only parents and grade 11 & 12 students are allowed purchase from the Cafe. Please download the app to access your student’s account, view menus and add money.

Benedicte thanked everyone again for their attendance. Please contact any member of the committee with questions or if you would like to volunteer.

Minutes respectfully submitted by Jo Laycock.

THE PTA PRESENTS

Food
and
Drinks

Trivia Night

Make
new
Friends

FRIDAY SEPTEMBER 20TH
7:00 - 11:00PM
CENTRE CAFE

Games
and
Fun

Dress code
smart
casual

100 ¥

INCLUDES FINGER FOOD & A WELCOME DRINK

TICKETS AVAILABLE BEFORE AND AFTER SCHOOL:

WEDNESDAY SEP. 4, FRIDAY SEP. 6TH

MONDAY SEP. 9, WEDNESDAY SEP. 11, SEP. 13

MONDAY SEP.16, TUESDAY SEP. 17

MAKE YOUR OWN TEAM OR FORM ONE ON THE
NIGHT (6 - 8 PEOPLE)

FESTIVAL

hosted at

Nanjing International School
No 8 Xueheng Road · Qixia District

WEEKEND

SAT, Sept 7

6 pm until late



PFRANG MUSIC NIGHT

A relaxed and enjoyable night out with friends and a fundraiser for Pfrang Association.

- Live music featuring The Bad News Band
- International food court
- Raffle prizes

Admission

September 7th
6 pm

200 RMB

incl. 100 RMB food + drink voucher

Please bring your children on **Sunday** for the popular Pfrang Day children's games and entertainment.

For more information please contact:



Pfrang Association

www.pfrangassociation.org
pfrang@sharehousechina.com

SUN, Sept 8

12 - 4 pm



NIC MEMBERSHIP WELCOME BBQ

An afternoon for families and friends, to welcome returning and new members of the Nanjing International Club. Join us, together we share, care and enjoy!

- BBQ Buffet
- Information about NIC
- Kids activities

Admission

September 8th
12 - 4 pm

- New & returning members **FREE**
- Non-Members adults **250 RMB**
- Kids < 12 **100 RMB**
- Kids activities (parents to Pfrang!) **50 RMB**

NIC MEMBERSHIP FEES:

Full Year	Oct 1 - Oct 31	Early Bird
Family	RMB 1400	RMB 1200
Couple	RMB 1200	RMB 1000
Single	RMB 1000	RMB 800
Student	RMB 200	RMB 100

Pre-registration days at NIC
Aug 20, 27 + Sept 3 before and after school.



Get your Early Bird discount!

www.thenicclub.com



PFRANG LIVE MUSIC NIGHT & INTERNATIONAL FOOD COURT

**SATURDAY
SEPT. 7, 2019**

6PM -UNTIL LATE

**A RELAXED ADULT
EVENING WITH FRIENDS
AND FUNDRAISER FOR
PFRANG ASSOCIATION**

**ADMISSION
200 RMB
INCL. 100RMB FOOD &
DRINK VOUCHER**

**JOIN US AT NANJING
INTERNATIONAL
SCHOOL**

**MORE INFORMATION:
WWW.PFRANGASSOCIATION
PFRANG@SHAREHOUSECHINA.COM**



**BRING YOUR CHILDREN ON
SUNDAY FOR PFRANG DAY
CHILDREN'S GAMES AND
ENTERTAINMENT!**

**DOOGOOD
MUSIC**

**DOOGOOD
FOOD**





MAKE EVERY STEP COUNT

FROM 1ST TO 28TH SEPTEMBER
Step up to the challenge and walk
10 000 steps per day

All the money raised through registration
fees will be divided equally between the four
charities.

Registration fee 100 RMB per person

Weekly prizes

Email: tea@theniclub.com to register
and for more information

By paying the registration fee, you
agree to undertake this activity
at your own risk



SNOW JAPAN 2020

24 – 31 Jan 2020
Japan

Would you like to
learn how to ski or
snowboard?

**Then come join
the trip!!**

Families of all ages
and Gr 6 – 12
students of all abilities
welcome

Full 6 days
ski/board
package
¥11,000
(plus flights)

More information
and bookings -
contact



dannyclarke@nanjing-school.com

