



## Early Years Centre outside play

### 哪些是影响学生成就的因素

我以前写过关于John Hattie的《看得见的学习研究》一书，(<https://www.visiblelearningplus.com>) 这本书着眼于所有的教育研究并试图列出影响学生成就的最主要因素。2017年，他更新了他的研究，其中一些发现是我们NIS感兴趣的。

影响最大的是与教师属性有关，最重要的是教师对学生成绩的估计。也就是说，当教师相信学生的学习能力时，当他们相信培养学生的才能时，当他们支持学生时，成绩就会受到影响。教学策略中最重要的因素是对学生学习的反馈。研究表明，学生对这些具体的，及时的，透明的个人干预反映良好。

对学生成就影响最大的是与他们之前的知识和背景有关。也就是说在A学校成绩良好的学生在转到B校后，也应该表现良好。由于我们学校是一所流动性较大的学校，我们会与学生沟通，帮助他们向新的，更高的成就发展。一个有显著影响的因素是学生是否参与了他们自己的评估，也就是说他们根据标准来发展自己的成就以更接近标准。虽然这在MYP和DP似乎更为明显，但在我们的幼儿园Reggio影响项目中，孩子们讨论他们的学习时，也是息息相关的。在学校层面，对学生成绩影响最大的是学校领导层。一个能够鼓励教师集体效能感，合作意识和对明确使命和策略的承诺的学校领导班底更有可能影响学生的成就。

你可能会问学生的成就到底是什么，并且如何衡量。这是一个需要更长答案的大问题。我的答案很简单，这就是我们所说的个人卓越。学术成就只是个人发展的一个组成部分。

Have a sensational September,

Laurie McLellan

[lauriemclellan@nanjing-school.com](mailto:lauriemclellan@nanjing-school.com)



### Content

From Mr. McLellan	01~02
Welcome New Students	02
No Parking Notice	02
Fall MAP Assessments	03
Parent Access to School Campus	04
Library News	05
MS Counselling News	06
PS Variety Show	07
NIS Activities	08~09
Board Meeting Minutes	10
How to update passport info	11~14
Link for Lunch Menu, Swimming Pool	
Schedule & Community Events	15
PTA News	16
PTA Meeting Minutes	17~18
Trivia Night	19
Festival Weekend	20
Food Court Poster	21
September	22
Snow Japan 2020	23

### Contact Information

Nanjing International School, Xue Heng Lu 8, Xian Lin College and University Town, Qi Xia District, Nanjing, P.R. China, 210023

[www.nischina.org](http://www.nischina.org)

Tel: +86 25 8589 9111 Email: [enquiries@nanjing-school.com](mailto:enquiries@nanjing-school.com)



## Early Years Centre outside play

### What factors influence student achievement

일전에 John Hattie의 가시적 학습 연구(Visible Learning research)에 대해 쓴 적이 있었습니다.  
(<https://www.visiblelearningplus.com>)

이 연구는 전반적인 교육을 연구 한 후, 학생의 성취에 가장 영향을 미치는 요소들이 무엇인가에 대해 목록을 작성한 것입니다. 2017년에 다시 자신의 연구 결과를 다음과 같이 업데이트했는데 내용 중에 몇 가지 NIS가 관심 있어하는 내용이 있었습니다.

가장 큰 영향은 교사의 자질과 연관이 있습니다. 교사들의 학생의 성취도를 측정하는 교사의 자질을 말합니다. 즉, 교사가 학생의 학습 능력을 믿고, 학생이 가진 재능을 개발하도록 지원해 줄 때 학생들의 성취에 영향을 미칠 수 있다는 것입니다. 교육과 교육 지침에 있어 가장 중요한 요소는 학생에게 자신들의 학습에 대한 피드백을 이용하는 것입니다. 이 연구는 학생들은 구체적이고, 시의적절하며, 투명하게 개입을 할 경우 가장 잘 반응을 보인다고 설명합니다.

학생들의 성취에 가장 큰 영향을 주는 요소는 사전 지식과 배경과 관계가 깊습니다. 다시 말해 A학교에서 성취도가 높았던 학생은 B학교로 전학 후에도 잘 할 확률이 높다는 것입니다. 대부분의 학생들이 타 학교에서 NIS로, NIS에서 4년에서 혹은 더 짧게 혹은 더 길게 다니고 다시 타 학교로 옮기기 때문에, 우리는 학생들이 기존에 지니고 있는 자질, 재능을 받아들이고 새롭고 더 높은 성취를 이룰 수 있게 도와줍니다. 또 다른 중요한 요인은 학생들이 자신의 평가에 참여할 경우, 평가 기준에 근거해서 자신의 성과를 대략적으로 파악한다는 것입니다. 이는 MYP와 DP 과정에서 좀 더 명확하게 보이긴 하지만, NIS의 레지오 프로그램을 따르는 유치부에도 실재합니다.

학교가 학생들의 성취에 가장 큰 영향을 미치는 것은 스쿨 리더쉽입니다. 교사들의 역량, 협동심, 명확한 임무와 전략을 위한 노력 등을 권장하는 스쿨 리더쉽은 학생들의 성취도에 영향을 미칩니다.

여러분은 학생 성취도가 실질적으로 무엇이고 어떻게 측정되냐고 질문을 하실 겁니다. 이는 아주 긴 대답을 요하는 질문이지만, 이것이 바로 소위 우리가 말하는 개인의 우수성, 개인 역량(personal excellence)이라는 것입니다. 학업적 성과는 이 개인 발달의 한 요소일 뿐입니다.

Have a sensational September,

Laurie McLellan  
[lauriemclellan@nanjing-school.com](mailto:lauriemclellan@nanjing-school.com)

### Content

From Mr. McLellan	01~02
Welcome New Students	02
No Parking Notice	02
Fall MAP Assessments	03
Parent Access to School Campus	04
Library News	05
MS Counselling News	06
PS Variety Show	07
NIS Activities	08~09
Board Meeting Minutes	10
How to update passport info	11~14
Link for Lunch Menu, Swimming Pool	
Schedule & Community Events	15
PTA News	16
PTA Meeting Minutes	17~18
Trivia Night	19
Festival Weekend	20
Food Court Poster	21
September	22
Trivia Night	23
Snow Japan 2020	24

### Contact Information

Nanjing International School, Xue Heng Lu 8, Xian Lin College and University  
Town, Qi Xia District, Nanjing, P.R. China, 210023

[www.nischina.org](http://www.nischina.org)

Tel: +86 25 8589 9111 Email: [enquiries@nanjing-school.com](mailto:enquiries@nanjing-school.com)



We are delighted to welcome these two new students to NIS this week!

Zachary	K2
Jerry	G6

Upcoming Events:  
**The Upcoming Week is W5**  
Wednesday 11<sup>th</sup> September  
Yearbook Mugshots  
Friday 13<sup>th</sup> September  
Mid Autumn Festival  
**NO SCHOOL**  
Saturday 14<sup>th</sup> September  
EUCC Badminton @NIS



**IMPORTANT NOTICE : NO PARKING IN SCHOOL THIS WEEKEND**

Due to our Festival Weekend with our Pfrang Music Night and NIC Welcome BBQ taking place over Saturday and Sunday there will be NO PARKING in school this weekend.

See poster in this bulletin for more information on these events.

Thank you for your understanding.

[suenorthcott@nanjing-school.com](mailto:suenorthcott@nanjing-school.com)

# Fall MAP Assessments: September 16-27

Starting the week of September 16th, students in Grades 3- 10 will take the MAP (Measures of Academic Progress) assessments for Reading and Maths. These online tests are administered by NWEA (Northwest Evaluation Association:)  
<https://www.nwea.org/>.

“MAP assessments are adaptive, which means that every student gets a unique set of questions based on responses to previous questions. As the student answers correctly, the questions get harder; if the student answers incorrectly, the questions get easier. The purpose [...] is to determine what the student knows and is ready to learn next.”

(<https://www.nwea.org/blog/2017/12-common-questions-parents-ask-map-growth-assessment/>)

MAP provides us with assessment data twice annually that help track student growth and better ensure that learning is appropriate for the needs of each student.

Would you like to try a practice test? Click [here](#):

Both the username and password are: **grow**

Beyond these preparations, students should simply get a good sleep, eat a healthy breakfast, and come to school ready to give their best effort.

Reports will be sent home to parents in early October. If you have any questions, please feel free to contact me.

Kasson Bratton

Deputy Director-Learning

[kassonbratton@nanjing-school.com](mailto:kassonbratton@nanjing-school.com)

# 家长入校守则

请参阅以下入校指南。此目的是为了最大限度提高安全性以及学生的学习性。

活动中心	
进入 NIS 校园 (停车场及活动中心)	周一至周六：早 5:30 至晚 9:30 周日：日程安排的活动或者使用健身房
放假期间	详见学校每周简报
健身房	每天早 5:30 至晚 9:30，特殊情况另作通知。
游泳池	社区成员开放时间，详见每周简报。
活动中心咖啡厅	公布的开放时间。PK 至 10 年级的学生必须有家长监管。
NIS 家长对学习区域的访问（通过门禁系统之后的区域）	
户外区域（蜘蛛爬架，院内游乐设施，跑道，球场，花园等）	周一至周五：早上接送，下午 6 点放学前。 周六：早 7:30 至晚 6:00。 周日：只限 NIS 批准的社团活动
体育馆	非教学日，只限 NIS 批准的社团活动。
图书馆	周一至周五：早 7:45 至晚 4:15 周六：详见每周简报 PK 至 9 年级的学生下午三点后必须有家长监管。
其他学习区域（教室，设计中心，幼儿园区域，剧院）	早上送学生上学，老师的邀请，和／或日程安排的活动（例如，会议，开放时间，安排好的参观，家长会议）
餐厅	每天放学后 30 分钟（具体时间以每日放学时间为准）。学生必须有家长监管。
接放学	家长需在指定地点接学生放学。
卫生间	家长只能使用成人卫生间。



## NIS 학부모님들의 캠퍼스 출입 지침

아래의 캠퍼스 출입 가이드라인을 참고하세요. 학생들의 안전과 학습을 보장하기 위한 지침입니다.

### 학부모님들의 센터 출입 허용

<b>NIS 캠퍼스 출입</b> (주차장 & 센터빌딩)	월요일- 토요일 :오전 5:30-오후 9:30.  일요일: 사전 신청이 되어 있는 액티비티 활동과 피트니스 룸 사용시에만.
휴교일	Weekly Bulletin 에 공지에 따름.
피트니스 룸	매일 오전 5:30- 오후 9:30, (예외 시 별도 공지에 따름)
NIS 수영장	커뮤니티 수영 가능 시간은 사전 공지된 기간 동안에만 (세부 내용은 weekly bulletin 참고)
센터 카페	영업 시간 동안 단, PK-10 학년 학생들은 반드시 학부모 동반을 요함

### NIS 학부모님들의 러닝 스페이스 출입 (ID 카드 사용하는 출입문부터)

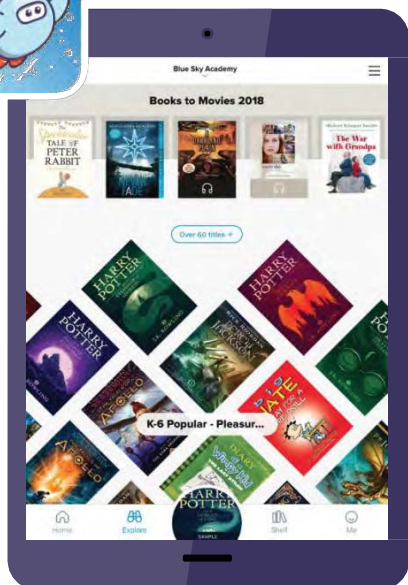
<b>외부 활동 공간</b> (Spider Web, Courtyard Play Structures, Track, Pitch, Garden, etc.)	월요일-금요일: 학생들 오전 등교 지원 시간부터 오후 6 시까지  토요일:오전 7:30- 오후 6:00.  일요일: NIS 가 승인한 커뮤니티 활동만 가능
NIS 체육관	하교 이후, NIS 가 승인한 커뮤니티 액티비티 활동만 가능
도서관	월요일-금요일: 오전 7:45- 오후 4:15.  토요일: 매주 Weekly bulletin 에 변경사항 사전 공지 됨  PK-9 학년 학생들은 오후 3 시 이후부터는 반드시 보호자가 동반해야 함
<b>그 외 기타 학습공간</b> (Classrooms, Design Centre, Early Years Centre, PAC)	학생들 오전 등교 지원, 교사 초청으로 예정된 행사 시 (컨퍼런스, 오픈 하우스, 학교가 주관하는 교내 투어 , 학부모 미팅 등).
카페테리아	하교 이후 30 분 동안. 학생은 보호자가 반드시 동반해야 함
픽업	반드시 지정된 픽업 장소에서만 가능
화장실	학부모님들은 반드시 성인용 화장실을 이용해야 함

# Open a world of reading

For easy access, our school's setup code is

**nanjingcn**

Use your ID number as both username & password.



## Sora

The student reading app

Get Sora and  
start reading today!



To use on your laptop: visit <https://soraapp.com>

Brought to you by NIS and built with ❤️ by OverDrive.

See Mrs. Romero in the library for help or questions!  
Parents need to be set up with an account first...students & teachers are ready to go!

# Stuck in the Middle

## The Ever Changing Brain.

Come join our discussion group to gain a better understanding of child brain development and how to help you navigate their changing needs.

Why does my child act  
this way?  
Why does my child think  
this way?  
How can I better talk  
with my child?

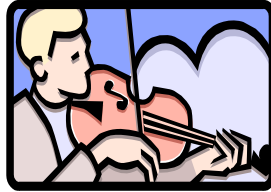


**When:** Thursday, September 12th @ 8:15

**Where:** Large Group Room

**Who:** Middle School Counselor, Lance Yuen





# **Event: Primary School Variety Show**

**Date: Friday 11<sup>th</sup> October, 2019**

**Time: 8:10am**

**Venue: NIS theatre.**

**Auditions will be held in the Performing Arts room during the second half of lunchtime at the following times:**

**Friday 6<sup>th</sup> September**

**Gr.5 students**

**Monday 9<sup>th</sup> September**

**Gr.4 students**

**Tuesday 10<sup>th</sup> September**

**Gr.3 students**

**Wednesday 11<sup>th</sup> September**

**Gr.2 students**

**Thursday 12<sup>th</sup> September**

**Gr.1 students**

## **Talent Show Criteria:**

- 1. Each act must be no longer than 2 minutes**
- 2. Make eye contact with your audience**
- 3. Have lots of facial, vocal and body expression if your act requires it**
- 4. It should be well rehearsed/polished**
- 5. Have fun!**

**\*The students will find out by the end of the day on Tuesday 17<sup>th</sup> September whether or not they have been successful.**

**The PS Student Council wish all of the students auditioning the best of luck.**

[heididean@nanjing-school.com](mailto:heididean@nanjing-school.com)



# ACTIVITIES

## Athletics

It is now coming up to Week 5 and CISSA Touch Rugby trip to Shanghai is fast approaching. As CISSA Touch Rugby comes to an end so CISSA Soccer will start. Middle School Soccer and ACAMIS Table Tennis are starting this coming week – there is still time to sign up!!



## Swimming



Mini-Squad selection took place last Friday. The highest number of 'Minis' were recorded since last year, with 34 of them trying out.

Our 'littlies' are now spread over 2 groups so that the majority of swimmers have an opportunity to take part.

Our older students practiced their team building skills.

## Community Activities

Please remember to pick up your payment slip. There are still a few seats available for some community activities like Tabata, HSK3 preparation course, English Beginners and for some swim lessons. The lessons will start next week (September 9<sup>th</sup>). Please feel free to contact me with your concerns or questions.

Your Community activity coordinator  
Katja Schubert

NIS Nanjing International School	
Payment Slip	
Activity Name :	
Participant Name (in Capital) :	
Amount :	

**Current  
Vacancies**

Sign up on Veracross for the following volunteering opportunities:

- English Conversation Volunteers – Now
- Volunteers for the NIC Barbeque – Sep 8<sup>th</sup>
- Learning 2 student Volunteers – Oct 18-19<sup>th</sup>
- ACAMIS Volleyball Tournament Volunteers – Oct 24-26<sup>th</sup>
- PTA Autumn Festival – Nov 2<sup>nd</sup>
- Santa Fun Run – Nov 8<sup>th</sup>
- Royal Family Christmas Market – Nov 8-9<sup>th</sup>
- NIC Christmas Benefit Concert -Nov 30<sup>th</sup>
- NIS Invitational Basketball – Nov 30<sup>th</sup>

## Updates

### Coming up!

CISSA Touch Rugby @ Shanghai 20 – 21 Nov  
NIS Volleyball Invitational @ NIS 21 Nov  
Local Swim Meet @ NIS 21 Nov

**Contact us:**

[dannyclarke@nanjing-school.com](mailto:dannyclarke@nanjing-school.com)  
[annayuen@nanjing-school.com](mailto:annayuen@nanjing-school.com)

[kathrinlammers@nanjing-school.com](mailto:kathrinlammers@nanjing-school.com)  
[cac@nanjing-school.com](mailto:cac@nanjing-school.com)



# ACTIVITIES

## ASAs, Clubs, Performing Arts, Service

We are always looking for new opportunities for your children. The catalogue for Cycle 2 will be published in October, so if you have an idea for an ASA, a Club or a Performing Arts or Service experience, then we would love to talk to you. Come share your passion with the students.



## Reasons to do Service (Service as Action/CAS)

Service learning projects can help us understand that we have an important place in our community, in our world. We may all get busy with our lives; friends, family, sports or academics, and we forget that we are part of a larger community. Service reminds us all that we can develop a greater sense of responsibility, empathy, acceptance of diversity, and concern for others. It also helps us to lead more balanced lives. No matter what our age or our ability, we can all do something to help. If you would like ideas on how you and your family can help in the community, please stop by the Activities Office.



## Grade 5 Discover China Information Session

Grade 5 parents are invited to a session to learn about what the students will do on their first Discover China. The session will take place on October 11<sup>th</sup>, after the PS Variety Show. More Information to come.

## Grade 6-11 Discover China Parent Coffee Morning

Save the date! On Wednesday, October 9<sup>th</sup>, we would like to invite you to a general information session about your child's Discover China experience. We will provide itineraries, packing list and QR codes. It will take place from 8.10 – 9.00 am in the MS Large Group Room. We hope to see you there!



## Travel Document

In Preparation for Discover China and all other overnight field trips, the Activities office is collecting copies of students' valid travel documentation. Foreign Students should email in a photo of their passport and valid Chinese visa to Ms. Anna. Students holding China, Hong Kong, Macau or Taiwan ID cards, must send in a photo of the front and the back of the card. Please do not hesitate to contact us in the Activity Office for clarifications.



NIS BOARD – MEETING		
Date: August 28th 2019	<b>Present:</b> Andrea Raviolo, AR; Dylan Barnes-Lotfi, DB; Julia Güsten, JG; Laurie McLellan, LM; Rachel Shin, RS; Sonia Jaeger, SJ; Yi Zhang, YZ; Angela Romero, ARo.  <b>Apologies:</b> Patrick Heckelmann, PH <b>Invitee(s):</b> Arek Owczarek, AO  <b>Minutes:</b> Angela Romero	<b>Status of Agenda Item:</b>  For <b>Action</b> by Board = <b>ACT</b> For Agreement by <b>Consent</b> = <b>CNS</b> For <b>Information</b> Only = <b>FIO</b>
Time: 6.30pm		
Location: Board Room		
Agenda Item	Discussion/Conclusions	Action + Person(s) Responsible
1. Assign Board officers, committees & minute taker	Chair: JG Vice-chair: PH Finance Committee: AR, YZ, PH Governance: DB, RS, SJ Minute Taker: ARo Chair of Governance: DB Chair of Finance: AR Director Evaluation Committee: JG, YZ, SJ	CNS
2. Update on the HUB and campus development	AO updated the Board on changes in building regulations and the impact on campus development projects.	FIO
3. Director's Report	Laurie presented the report.	FIO
4. Visit to ISB and WAB	Will involve meetings with board members of those schools and other school personnel to see how the school mission & strategy has impacted the physical structures of the school.	FIO
5. Set next meeting dates	Finance: September 18, 2019 6:30pm Board Room Governance: October 9, 2019 8:00 am Laurie's office Board: September 23, 2019 6:30 pm Board Room Annual General Meeting: Sept. 27, 2019 8:15 am	CNS
6. Meeting Reflection	Members reflected positively about the meeting.	FIO
<b>Minute Taker's Name:</b> Angela Romero		



# **HOW TO UPDATE PASSPORT INFORMATION**

## **Important information about passports and visas**

Please update Veracross with current student passport and valid China visa details so the Activities Office can begin booking tickets and accommodations for Discover China Trip Week 2019.

All FOREIGN students must have a valid passport and a valid visa in order for the Activities Office to book flights, train tickets and hotels. Please note that a valid visa and/or entry stamp are essential for buying tickets and making hotel reservations.

Students who intend on using their CHINESE ID cards as their travel document are asked to send a photo or a scan of their ID Card via email to [elaineliu@nanjing-school.com](mailto:elaineliu@nanjing-school.com)  
HONG KONG, MACAU and TAIWANESE students are also asked to send photo or a scan of their Chinese Government issued ID passes to [elaineliu@nanjing-school.com](mailto:elaineliu@nanjing-school.com)

Please see the pass samples views as below:



**Chinese ID sample**



**Chinese government issued  
pass sample for  
Hongkong and Macau resident**



**Chinese government issued  
pass sample for Taiwan resident**

If your child/children hold Foreign Permanent Resident ID Card(s) 中华人民共和国外国人永久居留证 issued by Ministry of Public Security and you want use it/them as the travel documentation in Discover China Week, please send information via email [elaineliu@nanjing-school.com](mailto:elaineliu@nanjing-school.com)

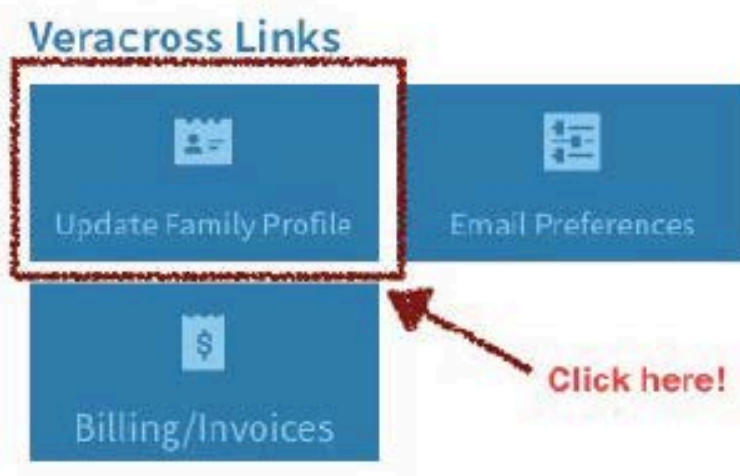


**For FOREIGN passport holders ONLY:** please refer to the instructions on how to update your passport and visa documentation.

## Step 1:

Log into Veracross via <https://accounts.veracross.com/nis/portals/login>

Go to "Update Family Profile" then "Citizenships & Passports"



Household Profile

Update Household Profile

Medical Profile

School Policies

## My Family: Information Review

### Instructions

Please keep your information up to date. Thanks.

1. Click on the information tile to view the info. detail.
2. If you want to make change, please click on blue "Edit" button on the information window.
3. After you make change, please "Save".

Review and Edit

Update Log

search actions

### MEDICAL INFORMATION

[Review Medical Profile](#)

View current profile and submit change requests

Click Here!

### FAMILY INFORMATION

[My Personal Contact Information](#)

[Citizenships & Passports](#)

## Step 2:

Add or update passport information:

save

x remove

cancel

First Name

Country

Primary Citizenship? \*

yes

Input passport Name, Country then chose Primary Citizenship "yes"

Passport Information:

Issue Date \*

Expires On \*

Passport Number \*

\*Indicates a required field

save

x remove

cancel

First Name

Country

Primary Citizenship? \*

yes

Input all the \* information here!!

Passport Information:

Issue Date \*

Expires On \*

Passport Number \*

\*Indicates a required field

### **Step 3:**

Add or update China visa information :

The screenshot shows a web interface for 'Citizenships & Passports' under the 'United States' category. A red callout bubble with the text 'Click here!' points to a link. Below this, the 'China Visas' section is highlighted, showing 'No visa information on file'. A form titled 'Updating "Expiration Date " is essential!' is displayed, featuring an 'edit' button and fields for 'Issue Date', 'Expiration Date', 'Visa Number', and 'Visa Notes'. A red arrow points from the callout bubble to the 'Expiration Date' field.

Citizenships & Passports  
United States. **Click here!**

**China Visas**  
No visa information on file

**Updating "Expiration Date " is essential!** **edit**

Issue Date	
Expiration Date	--
Visa Number	--
Visa Notes	--

Please complete the information update at your earliest convenience.  
If you have any questions, please do not hesitate to contact the Activities Office.

Thank you for your understanding!

Anna Yuen, Activities Coordinator  
[annayuen@nanjing-school.com](mailto:annayuen@nanjing-school.com)

Elaine Liu, Secretary to the Activities Coordinator  
[elaineliu@nanjing-school.com](mailto:elaineliu@nanjing-school.com)

# Lunch Menu

<http://www.nischina.org/page.cfm?p=571>



# Community Events

<http://www.nischina.org/page.cfm?p=534>



# Swimming Pool Calendar

<http://www.nischina.org/page.cfm?p=585>



# PTA NEWS

## 2019-2020

### PTA COMMITTEE

President: Benedicte Thomasson

Vice President: Yvonne Zollner

Vice President: Gina Ryu

Vice President: Ying Liu

Treasurer: Gina Policelli

Secretary: Jo Laycock

## PTA EVENTS

**Trivia Night - September 20th**

**Coffee Morning - 8:15am  
September 25th**

## PTA SHOP

**PTA Shop Hours**

**Tuesday 2:00 - 3:00**

**Friday 2:30 - 3:30**



• **PTA Trivia Night is Friday September 20th.** For a 100¥ you will get delicious food, one welcome drink, fun, games, friends and the chance to show off your trivia knowledge! This is an adults-only event. We will have tables of 6-8 people and you will answer trivia questions and compete for a trophy.

You don't need to organize a team before the night! Please note that the date printed in the NIS Calendar is not correct. Ticket sales will be in the NIS Foyer before and after school this week on Monday 9th and Wednesday 11th of September. See the Trivia Night poster for more information. We hope to see you there!

- **PTA Birthday Cupcakes** will be provided by the PTA on **September 11th** for all teachers and students with birthdays in August and September.
- **No school on Friday 13th of September** - enjoy mid-autumn Festival!
- **PTA Coffee morning** is coming up on **Wednesday September 25th** at 8:15am. Come along to hear teachers and members of our community talk about current issues in our school.

To join the volunteer group for any of our PTA events, please contact Benedicte Thomasson, Yvonne Zollner, Gina Policelli or Sue Northcott. Or contact us on at [ptapresident@nanjing-school.com](mailto:ptapresident@nanjing-school.com)



Welcome and thanks to everyone for attending – Benedicte.

1. **Laurie:** Welcomed everyone. The current make up of the school is approximately 1/3 Korean, 1/5 ethnic Chinese and the rest is a mix. The level of English of these “non English speakers” is higher than previously.  
The Centre Cafe is the space for parents. Use it – chat, smile and get to know each other!  
Find the person you need to speak to for your specific question – we are here to help you.  
Let’s have a superb year developing talent in our inclusive community!
2. **Kasson:** Introduced learning leadership team.  
Please sign up for the upcoming Parent LED Conferences. The purpose is to learn more about your child, which is important for developing personal excellence.  
Thanked the PTA for doing a great job. Research shows that when parents are involved in their children’s education the outcomes are better.
3. **Gretchen:** Introduced counselling team including Sunmi Lee who helps as a bridge between nationalities as she is able to translate. They are here for the social and emotional wellbeing of all. The team will be at the next PTA meeting and would like to hear what we as parents would like to know more about and work on. Stop by and see us to chat!
4. **Adam & Junlah:** Will host a forum next Friday (30th) to discuss all things Primary School related including the fantastic new Early Years Centre .
5. **Joe:** The IT department has a new service window. Please try to come by after school if you need help as during the day they are very busy supporting the students.
6. **Benedicte & PTA team:** Excited to introduce this year’s team and events. The PTA’s aim is to encourage a positive connection between school and home and to help support all students, staff and parents. We want everyone to be included. Ying and Gina are delighted to help with Mandarin and Korean translation and involvement.  
Find out what’s going on by attending the PTA meetings and joining the “Unofficial Parents Group” on WeChat. All help is much appreciated – please sign the sheet being passed around if you would like to volunteer.  
The PTA shop is open every Tuesday and Friday after school. Pre-order hoodies will arrive mid October.  
Every student and teacher will receive a birthday cupcake from the PTA during their birthday month.  
Suzy Walker and Cheryl Moen are the PTA teacher reps. They help organise teacher volunteers and are always willing to help and advise.
7. **Upcoming events:** ASA cycle one sign-ups open at 1pm today.  
Trivia Night will be held on 20th Sept. We are excited to welcome all parents, teachers and staff to this evening of fun, games and trivia. Tickets will be on sale soon. Our very popular Mid Autumn Festival event will be held on 2nd Nov. – save the date!

8. **Sue:** This is a special day to welcome all our new families to our wonderful community (the thing that “leavers” say they miss the most!).

Please read the weekly bulletin (also available in Korean and Mandarin ) – it contains very important information about what’s going on.

Please remember we are a NUT FREE school – see Annie at Chartwells if you need more information.

A Child Protection Workshop will take place this morning. Attendance is mandatory for all parents.

A Veracross help session for new parents will be held immediately afterwards.

Tomorrow morning there will be an iPad training session for new and grade 1 parents.

9. **Sue – NIC:** Early bird sign-up is currently taking place. 7-8th September will be the Festival Weekend – all are welcome, come along and meet new friends.

10. **Katja – Community activities:** Sign-ups start today at 4pm. (15 sessions for week-day activities and 10 sessions for Saturday activities.) This a great way to learn new skills and make new friends. Katja’s office is on the 2nd floor of The Centre. Don’t hesitate to ask for help or offer up your talent for a new class!

11. **Kathrin – Aquatics:** Introduced some of the team and the different programs available (swim squads, ASAs and community activities). Please see the notice board outside the aquatics office or speak to one of the coaches for more details.

12. **Charities:** Representatives from each of the charities (Hopeful Hearts, Pfrang, Amy Yang and Ray of Light) explained their background stories, the work they do, how we can help and their upcoming events. Leaflets and cards were available on the tables. Further information can be found on the bulletin board in The Centre foyer.

13. **Anna:** Help is required with the painting of the production scenery, starting the last week in September. No experience is needed (paint by numbers!). See Anna Mathias to join the WeChat group if you can help.

14. **Annie – Chartwells:** Explained the lunch process for all students. Only parents and grade 11 & 12 students are allowed purchase from the Cafe. Please download the app to access your student’s account, view menus and add money.

**Benedicte thanked everyone again for their attendance. Please contact any member of the committee with questions or if you would like to volunteer.**

Minutes respectfully submitted by Jo Laycock.

# FESTIVAL

hosted at

Nanjing International School  
No 8 Xueheng Road · Qixia District

# WEEKEND

## SAT, Sept 7

6 pm until late



## PFRANG MUSIC NIGHT

A relaxed and enjoyable night out with friends and a fundraiser for Pfrang Association.

- Live music featuring The Bad News Band
- International food court
- Raffle prizes

### Admission

September 7<sup>th</sup>  
6 pm

**200 RMB**

incl. 100 RMB food + drink voucher

Please bring your children on Sunday for the popular Pfrang Day children's games and entertainment.

For more  
information  
please contact:



**Pfrang  
Association**

[www.pfrangassociation.org](http://www.pfrangassociation.org)  
[pfrang@sharehousechina.com](mailto:pfrang@sharehousechina.com)

## SUN, Sept 8

12 - 4 pm



## NIC MEMBERSHIP WELCOME BBQ

An afternoon for families and friends, to welcome returning and new members of the Nanjing International Club. Join us, together we share, care and enjoy!

- BBQ Buffet
- Information about NIC
- Kids activities

### Admission

September 8<sup>th</sup>  
12 - 4 pm

• New & returning members	<b>FREE</b>
• Non-Members adults	<b>250 RMB</b>
• Kids < 12	<b>100 RMB</b>
• Kids activities (parents to Pfrang)	<b>50 RMB</b>

### NIC MEMBERSHIP FEES

Full Year	Oct 1 - Dec 31	Early Bird
Family	RMB 1400	RMB 1200
Couple	RMB 1200	RMB 1000
Single	RMB 1000	RMB 800
Student	RMB 200	RMB 100

Pre-registration days at NIC:  
Aug 20, 27 + Sept 3 before and after school.



[www.thenicclub.com](http://www.thenicclub.com)





# PFRANG LIVE MUSIC NIGHT & INTERNATIONAL FOOD COURT

**SATURDAY  
SEPT. 7, 2019**

**6PM -UNTIL LATE**

**A RELAXED ADULT  
EVENING WITH FRIENDS  
AND FUNDRAISER FOR  
PFRANG ASSOCIATION**

**ADMISSION  
200 RMB  
INCL. 100RMB FOOD &  
DRINK VOUCHER**

**JOIN US AT NANJING  
INTERNATIONAL  
SCHOOL**

**MORE INFORMATION:  
[WWW.PFRANGASSOCIATION](http://WWW.PFRANGASSOCIATION)  
[PFRANG@SHAREHOUSECHINA.COM](mailto:PFRANG@SHAREHOUSECHINA.COM)**



**BRING YOUR CHILDREN ON  
SUNDAY FOR PFRANG DAY  
CHILDREN'S GAMES AND  
ENTERTAINMENT!**

**GOOD  
MUSIC**





# MAKE EVERY STEP COUNT

FROM 1ST TO 28TH SEPTEMBER  
Step up to the challenge and walk  
10 000 steps per day

All the money raised through registration  
fees will be divided equally between the four  
charities.

Registration fee 100 RMB per person

Weekly prizes

Email: [tea@thenicclub.com](mailto:tea@thenicclub.com) to register  
and for more information

By paying the registration fee, you  
agree to undertake this activity  
at your own risk





# Save the Date

*Friday & Saturday*

*NOVEMBER 8TH & 9TH*



*FOR THE INCREDIBLE*

## Christmas Market

AT ROYAL FAMILY GARDEN

6 XIAN YIN BEI LU, QIXIA, NANJING

Inquiries: lotusklysner (WeChat)



# SNOW JAPAN 2020

24 – 31 Jan 2020  
Japan

Families of all ages  
and Gr 6 – 12  
students of all abilities  
welcome

Would you like to  
learn how to ski or  
snowboard?

**Then come join  
the trip!!**

Full 6 days  
ski/board  
package  
**¥11,000**  
(plus flights)

More information  
and bookings -  
contact



[dannyclarke@nanjing-school.com](mailto:dannyclarke@nanjing-school.com)