

Shawnee Mission School District Kansas Educational Systems Accreditation

District Site Council

April 2, 2019





Goals for Today...

- Review Building Improvement Plan Process
- Make connections between KESA and District Strategic Planning Process
- Engage in collaborative conversations & feedback - progress on Kansas Can Vision, State Board Goals, and definition of Success -Ready High School Graduate

KESA District Site Council (DSC)

Responsibilities Year 2

- Review building goals and action plans.
- Discuss progress in meeting the Kansans Can vision/goals and the definition of a success-ready high school graduate.
- Provide Feedback to develop system leadership action plan for each systemwide goal area.



School Improvement Plan Review

-Completed in Fall, 2018
by District Leadership
Team (DLT)

Outcome vs. Process Approach

- Do plans clearly identify measurable targets for student improvement?
- Do the targeted improvements articulate impact on student learning?
- How do targeted improvements relate to meeting Kansans Can vision/goals and the definition of a success-ready graduate?

Essential Elements of a Plan

- Goals should be student outcome focused.
- Goals should be written in SMART format.
 - SMART: Specific, Measurable, Achievable, Relevant, Time-Bound
- Are specific indicators identified for implementation to support achieving goals?
- Do indicators/goals link to the two identified focus areas (responsive culture & relationships)?
- At least one goal should address assessment measures.
 - Normative standards not growth only; priority standards connection
- Goal targets should be evident through 2022.
- Is professional learning evident in the plan?

Collaborative Conversation...What to look for

Review plans for essential elements.

Note strengths, areas for consideration, or questions.

What take-aways may help us develop system-wide goals for KESA?

Stakeholder Input:Thought Exchange

What are the skills our current first graders (Class of 2030) will need to be success-ready graduates?

Themes From Thought Exchange

Problem Solving & Critical Thinking
Communication Skills
Social Emotional Learning
Creative Thinking
Work Collaboration
Adapting to a Changing World
Reading and Literacy
Mathematics
Finance
Technology



KANSAS VISION FOR EDUCATION

Kansas leads the world in the success of each student.



Successful High School Graduate

A successful Kansas high school graduate has the

- Academic preparation,
- Cognitive preparation,
- Technical skills,
- Employability skills and
- Civic engagement

to be successful in postsecondary education, in the attainment of an industry recognized certification, or in the workforce, without the need for remediation.

RESULTS



Evidence-Based Practices

RELATIONSHIPS	RELEVANCE	RESPONSIVE CULTURE	RIGOR
Staff	Curriculum	Leadership	Career and Technical Education
Students	Instruction	Early Childhood	Professional Learning
Families	Student Engagement	District Climate	Resources
Community	Technology	Nutrition and Wellness	Data

Foundational Structures



Compliance

Follows state and federal laws and regulations



Teacher Licensure and Accreditation | Kansas State Department of Education | Landon State Office Building | 300 S.W. Jackson Street, Suite 108 | Topeka, Kansas 66612-1212 | (781) 354-2390 | www.ksde.org

The Kansas State Department of Education does not discriminate on the basis of race, color, national origin, sex, disability, or age in its programs and activities and provides equal access to the free public and other designated youth groups. The following persons have been designated to handle inquiries regarding the non-discrimination policies: KSDS General Counsel, Office of General Counsel, KSDS, Landon State Office Building, 300 S.W. Jackson, Suite 102, Topeka, KS 66612, (781) 354-2390.

Rev 04/11/2017



SHAWNEE MISSION
SCHOOL DISTRICT

Strategic Plan Draft Document



BELIEFS:

- Every individual has inherent worth and deserves to be valued and celebrated.
- A community's strength is derived from its diversity.
- Respecting a community's diversity and each individual's dignity demands equitable access.
- A thriving community meets the basic physical, social, and emotional needs of its members.
- Safe and caring relationships are essential for learning and growth.
- Acknowledged and appreciated individuals confidently engage and collaborate.
- Individuals of all abilities and experiences can achieve personal excellence.
- Ownership empowers each person to ignite their future.
- Effective communication is truthful, genuine, reciprocal, and respectful.

MISSION:

The mission of the Shawnee Mission School District, the bridge to unlimited possibilities yet to be discovered, is to ensure students construct their own foundation for success in life's endeavors through relevant, personalized learning experiences orchestrated by talented, compassionate educators and distinguished by:

- an inclusive culture
- an engaged community
- and robust opportunities that challenge learners to achieve their full potential.

OBJECTIVES:

Every student will achieve academic success through a challenging, relevant personalized learning plan.

OBJECTIVES:

Every student will develop and utilize personal resilience while mastering essential competencies that lead to college and career readiness.

OBJECTIVES:

Every student will develop interpersonal skills to be an engaged, empathetic member of the local and global community.

STRATEGIES:

We will reimagine teaching and learning to guarantee relevant opportunities for personalized learning experiences.

STRATEGIES:

We will relentlessly create a fully unified, equitable, and inclusive culture.

STRATEGIES:

We will create the climate to cultivate quality educators so they flourish in pursuit of our mission.

STRATEGIES:

We will design systems that support our mission and beliefs.

STRATEGIES:

We will strategically focus resources to support state-of-the-art facilities to accomplish our beliefs, mission, and objectives.

ACTION TEAMS...

DRAFT

PARAMETER:

We will make decisions with primary focus on what is best for our students' success in life.

PARAMETER:

We will honor our diversity and treat each person with dignity and respect.

PARAMETER:

We will practice responsible stewardship of all our resources and partner with our community to leverage resources.

PARAMETER:

We will not compromise our commitment to academic excellence.

PARAMETER:

We will recognize and incorporate our traditions of excellence and build our vision for the future upon these solid foundations.



Making Connections...

Essential Question: What connections do you see between Kansas Vision for Education and the DRAFT of the District Strategic Plan?

Reflection

Essential Question: What connections did you see between Kansas Vision for Education and the DRAFT of the District Strategic Plan?

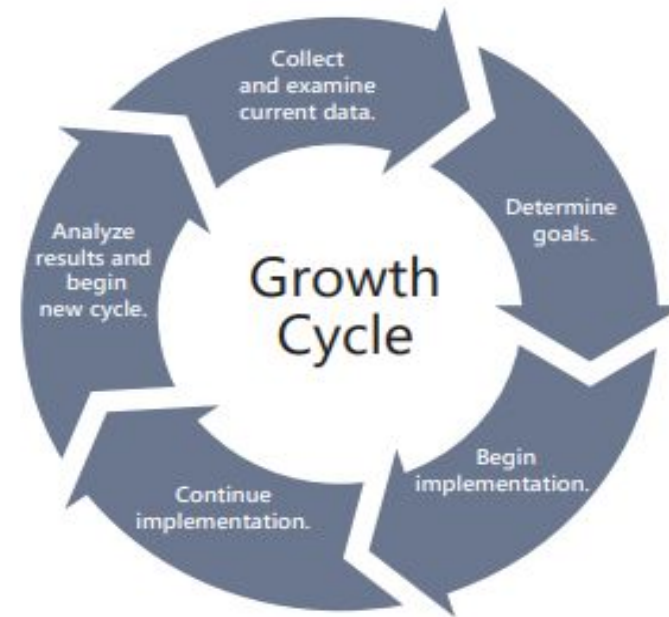


Outside Visitation Team (OVT)

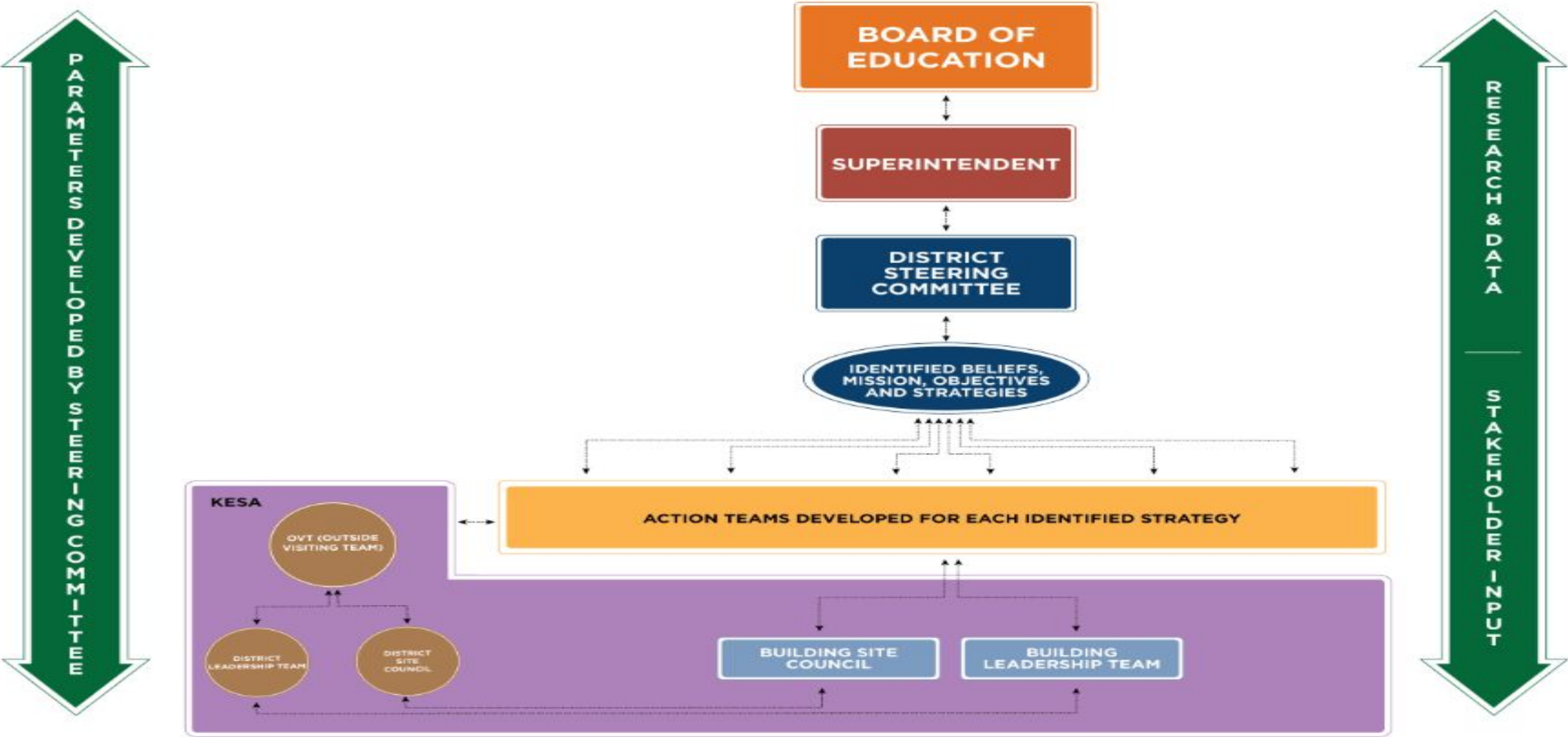
What does the process look like?

Outside Visitation

The bedrock of the KESA model is a quality improvement process grounded in best practices. To ensure fidelity to such a process, as well as transparency for stakeholders, outside visitation is key. In KESA, the Outside Visitation Team (OVT) is a group of education professionals charged with coaching, mentoring and supporting the system they are serving for the duration of the five-year accreditation cycle.



Planning Process



Purpose of OVT

Outside Visitation Team - Cycle Overview

	Year 1 in Cycle	Year 2 in Cycle	Year 3 in Cycle	Year 4 in cycle	Year 5 in Cycle
OVT chair	<ul style="list-style-type: none"> Schedule onsite visit to occur midspring. Attend onsite visit. Complete annual summary. 	<ul style="list-style-type: none"> Schedule onsite visit to occur midspring. Attend onsite visit. Complete annual summary. 	<ul style="list-style-type: none"> Schedule onsite visit to occur midspring. Attend onsite visit. Complete annual summary. 	<ul style="list-style-type: none"> Schedule onsite visit to occur midspring. Attend onsite visit. Complete annual summary. 	<ul style="list-style-type: none"> Schedule onsite visit to occur midspring. Attend onsite visit. Complete final annual summary.
OVT members	<ul style="list-style-type: none"> Attend onsite visit. 	<ul style="list-style-type: none"> Attend onsite visit. 	<ul style="list-style-type: none"> Attend onsite visit. 	<ul style="list-style-type: none"> Attend onsite visit. 	<ul style="list-style-type: none"> Attend onsite visit.
Tasks	<ul style="list-style-type: none"> Review needs assessment findings. Review current data supporting Results R. Discuss goal area selection. Identify items for system to address. Assist system in completing KESA Initial Report. 	<ul style="list-style-type: none"> Review goals. Review action plans. Provide support in specific areas as needed. Follow up on previously identified items. Identify items for system to address. 	<ul style="list-style-type: none"> Discuss implementation progress and any proposed changes to goals/action plans. Discuss potential artifacts/evidence for demonstrating growth. Follow up on previously identified items. Identify items for system to address. 	<ul style="list-style-type: none"> Review implementation progress. Discuss potential artifacts/evidence for demonstrating growth. Discuss Year Five. 	<ul style="list-style-type: none"> Final visit. Final analysis and discussion of direction for next cycle. System completes KESA Final Report. (Chair) Submit OVT final annual summary.

April 18, 2019



Questions?

Thank you for your time, commitment, and leadership in this process!



SHAWNEE MISSION

SCHOOL DISTRICT