

# Killingly Public Schools

## Achievement Data



2018-2019

### What is the district's **mission statement**?

It is the mission of the Killingly Public Schools to improve the quality of life and self esteem of all students. It will do so by:

1. Creating and maintaining an enthusiastic educational environment;
2. Challenging all students to achieve at their highest level;
3. Fostering respect for human differences;
4. Adjusting to an ever-changing world; and
5. Maintaining a partnership with the community.

### What is the district's **vision statement**?

The District's Vision Statement is set forth as the "Philosophy" which underlies its Mission. The Philosophy – as defined by the Board of Education - is as follows:

"The Board believes that the educational process in our schools should be supported by educators, students, parents/guardians, and the entire community, for a commitment to today's education is a commitment to society's future."

What are the district's core **beliefs or values**?

Killingly Public Schools believe that in our democratic society each person, without exception, is an important resource to our nation. We further believe that is the primary function of our schools to develop this resource to the greatest extent possible.

Our Schools must provide challenges and experiences, which continually foster the development of students' academic competencies, interests, abilities, and attitudes. Equipped with motivation skills, knowledge and values, individuals will be prepared to realize personal success and responsible citizenship.

# **Board of Education Goals**

Approved: 3/27/2019

## **Goal #1: Academic Achievement**

- A. Create a proficiency based learning system, ensuring equitable achievement opportunities for all students.
- B. Bring to life the KPS portrait of a graduate with students, staff, families and the community, ensuring all students are prepared for life success.

## **Goal #2: Talent Development**

KPS will recruit and retain highly effective professionals who are collaborative, respectful, supportive, reflective critical thinkers with an ability to connect to our student body.

## **Goal #3: Organizational Systems**

- A. Update facilities to provide a safe, healthy, adaptable learning environment conducive to student centered teaching and learning for the 21st century.
- B. Ensure Prek-12 students have access to progressive digital learning tools and the skill to utilize them, preparing them for future success.

## **Goal #4: School Culture & Climate**

- A. KPS will provide a safe, healthy and supportive environment for learning where students build resilience through the integration of social, emotional and academic skills.
- B. KPS will cultivate positive student, family, community partnerships that support learning, build pride and recognize the value for education.

**What percent of students are achieving at grade level in  
Reading, Writing, and Mathematics by grade level?**

**How will we measure progress towards each of the BOE  
goals in the coming school year?**

## STAR Reading Assessment 2018-2019

Grade	Number of Students	Fall Scaled Score	Spring Scaled Score	Change		Fall Percentile Rank	Spring Percentile Rank	Change
Second	162	180	343	163		31	54	23
Third	168	325	454	129		38	52	14
Fourth	154	472	565	93		48	50	2
Fifth	166	550	688	138		40	51	11
Sixth	162	684	791	107		44	47	3
Seventh	144	774	890	116		43	48	5
Eighth	157	890	974	84		44	45	1
Ninth	191	955	1014	59		41	43	2
Tenth	183	1061	1103	42		48	53	5
Eleventh	155	1088	1095	7		50	48	-2
District	1642	697.9	791.7	93.8		42.7	49.1	6.4

## STAR Reading Assessment Comparison 15/16 to 18/19

Grade	Percentile Rank 15/16	Percentile Rank 16/17	Percentile Rank 17/18	Percentile Rank 18/19	Median SGP 18/19
Second	58	51	53	54	68
Third	50	50	54	52	61
Fourth	60	49	48	50	43
Fifth	53	53	49	51	64
Sixth	54	50	45	47	59
Seventh	54	49	46	48	60
Eighth	52	48	44	45	57
Ninth	46	46	47	43	52
Tenth	42	47	50	53	53
Eleventh	49	45	48	48	42
District	51.8	48.8	48.4	49.1	55.9



## STAR Mathematics Assessment 2018-2019

Grade	Number of Students	Fall Scaled Score	Spring Scaled Score	Change		Fall Percentile Rank	Spring Percentile Rank	Change
Second	162	378	521	143		33	61	28
Third	168	515	620	105		56	66	10
Fourth	156	603	681	78		57	63	6
Fifth	164	667	712	45		55	53	-2
Sixth	162	703	757	54		43	48	5
Seventh	145	749	793	44		46	52	6
Eighth	158	780	813	33		46	49	3
Ninth	196	782	799	17		44	42	-2
Tenth	171	809	842	33		53	56	3
Eleventh	136	823	823	0		48	46	-2
District	1618	680.9	736.1	55.2		48.1	53.6	5.5

## STAR Mathematics Assessment Comparison 15/16 to 18/19

Grade	Percentile Rank 15/16	Percentile Rank 16/17	Percentile Rank 17/18	Percentile Rank 18/19	Median SGP 18/19
Second	67	56	62	61	59
Third	59	55	62	66	52
Fourth	63	50	64	63	47
Fifth	60	62	53	53	31
Sixth	59	56	56	48	50
Seventh	58	51	52	52	48
Eighth	54	50	49	49	50
Ninth	50	46	52	42	38
Tenth	52	51	52	56	48
Eleventh	55	45	49	46	40
District	57.7	52.2	55.1	53.6	46.3

## SBAC ELA Comparison 16/17-18/19

Grade	KPS Percent Scoring Level 3 and Above			CT
	2016-17	2017-18	2018-19	State Average 2018-19*
<b>3</b>	49%	54%	53%	54%
<b>4</b>	41%	44%	48%	55%
<b>5</b>	60%	54%	58%	58%
<b>6</b>	61%	65%	54%	55%
<b>7</b>	52%	63%	71%	56%
<b>8</b>	49%	57%	64%	56%
<b>All Grades</b>	52%	56.2%	58%	56%

**\*State Average not available at time of posting**

## SBAC Math Comparison 16/17-18/19

Grade	KPS Percent Scoring Level 3 and Above			CT
	2016-17	2017-18	2018-19	State Average 2018-19 *
<b>3</b>	37%	58 %	58%	55%
<b>4</b>	26%	47%	46%	53%
<b>5</b>	31%	22%	29%	47%
<b>6</b>	35%	43%	45%	45%
<b>7</b>	26%	36%	44%	46%
<b>8</b>	21%	23%	30%	44%
<b>All Grades</b>	29.3%	38.2%	42%	48%

**\*State Average not available at time of posting**

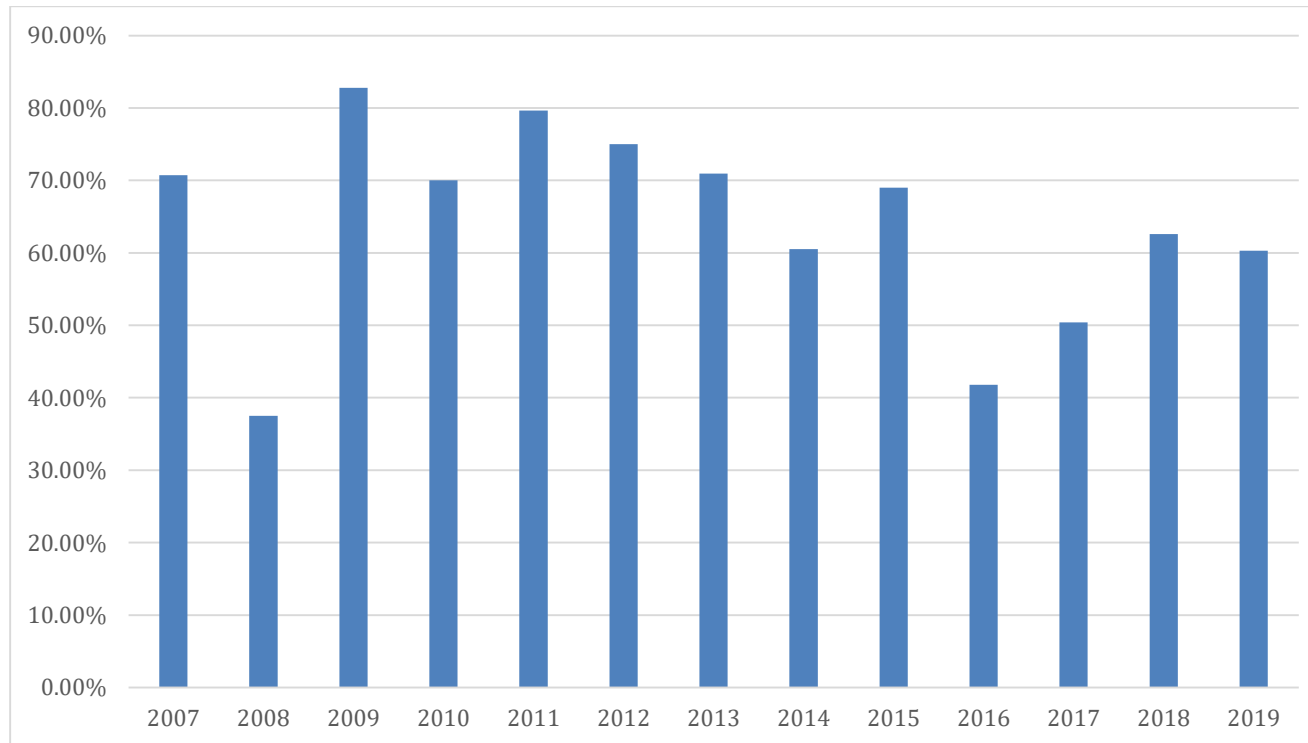
## Killingly High School Advanced Placement Results

**2007-2019**

KPS AP Results	Five	Four	Three	Two	One	Total	Passing %
2007	5	13	11	10	2	41	70.73%
2008	0	1	5	7	3	16	37.50%
2009	7	10	7	5	0	29	82.76%
2010	7	18	24	15	6	70	70.00%
2011	15	12	20	8	4	59	79.66%
2012	9	24	21	9	9	72	75.00%
2013	11	25	64	29	12	141	70.92%
2014	7	29	36	29	18	119	60.50%
2015	12	30	45	24	15	126	69.00%
2016	4	19	31	42	33	129	41.8 %
2017	2	13	42	38	18	113	50.4%
2018	8	21	53	36	13	131	62.6%
2019	14	30	32	41	9	126	60.3%
TOTAL	101	245	391	293	142	1172	62.9%

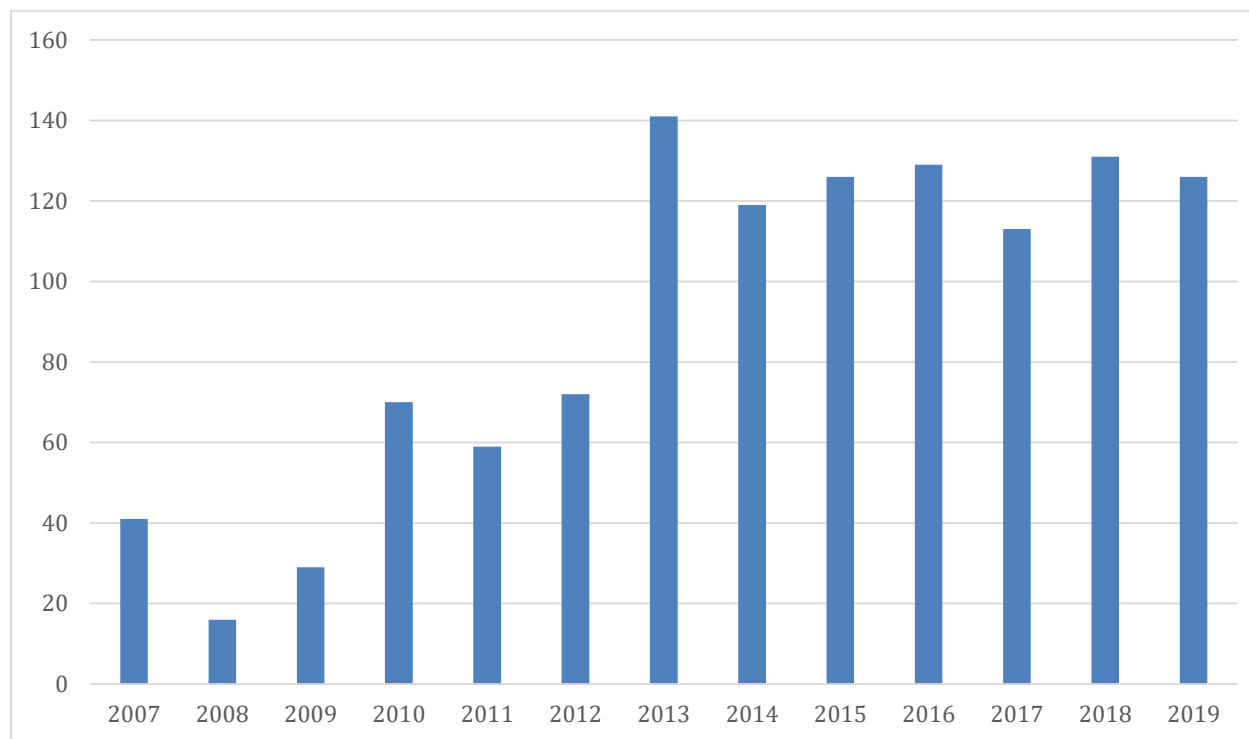
## KHS % Passing Advanced Placement Tests

2007-2019



## KHS Number of Students Taking Advanced Placement Tests

2007-2019



## SAT Day Scores 18-19

Subject	KHS Level 3 & 4 Met or Exceeded	State Level 3 & 4 Met or Exceeded	KHS Average Score	State Average Score
ELA	62.1%	61.6%	502	514
Math	25.0%	40.6%	475	500



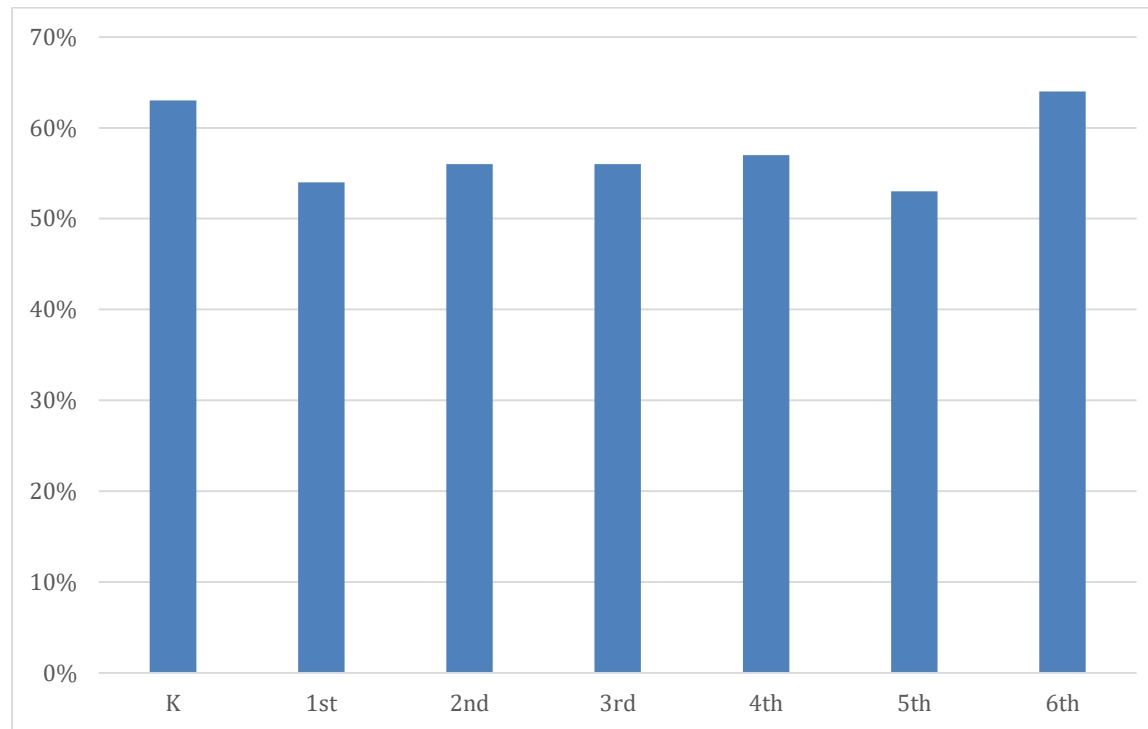
## Percent of Students at Grade Level in Reading

KPS 2018-19 Guided Reading Level Data			
Grade Level	Total Number of Students At/Above Goal	Total in Grade	Percent at Benchmark or Above
K	110	176	63%
1st	98	181	54%
2nd	93	165	56%
3rd	95	170	56%
4th	89	157	57%
5th	87	163	53%
6th	96	150	64%

## Percent of Students at Grade Level in Reading

<b>GRL</b> <b>Grade Level Comparison</b>					
	2014-15	2015-16	2016-17	2017-18	2018-19
K	76.3%	72.1%	65.0%	53%	63%
1st	56.4%	67.1%	40.2%	59%	54%
2nd	76.1%	70.5%	64.4%	62%	56%
3rd	76.5%	68.5%	58.9%	63%	56%
4th	71.6%	70.0%	55.8%	55%	57%
5th	58.6%	78.0%	45.3%	51%	53%
6th	88.8%	60.7%	44.7%	64%	64%

## Percent of Students at Grade Level in Reading 2018-19



# Killingly Public School Preschool

Goodyear Early Childhood Center  
Data Summary/Kindergarten Eligible Students Meeting Benchmark  
SY 2018-2019

<u>Language &amp; Literacy Domain</u>	% at Mastery
---------------------------------------	--------------

Recognition of Uppercase Letters	74%
----------------------------------	-----

Writing	77%
---------	-----

Concepts About Print	73%
----------------------	-----

Storytelling	58%
--------------	-----

<u>Early Mathematical Discovery Domain</u>	
--------------------------------------------	--

Recognition of Quantity	71%
-------------------------	-----

Cardinality	74%
-------------	-----

Number Operations	68%
-------------------	-----

### Four-Year Graduation Rates 2010-18

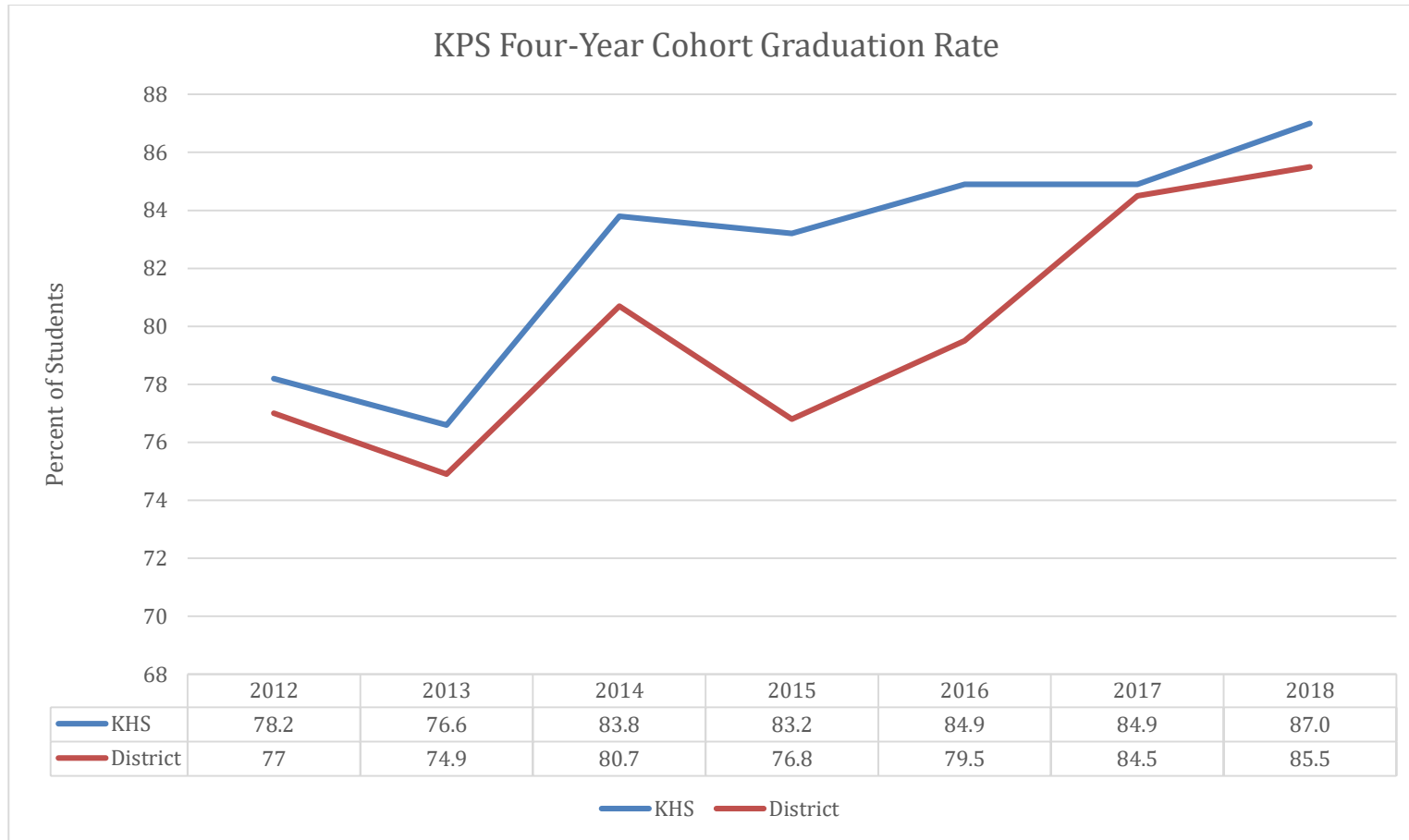
	2011-12	2012-13	2013-14	2014-15	2015-16	2016-17	2017-18
Killingly High School	78.2%	76.6%	83.8%	83.2%	84.9%	84.5%	87.0
Putnam High School	88.3%	80.4%	86.2%	*	97.0%	85.9%	
Plainfield High School	87.3%	84.7%	84.8%	81.9%	83.4%	84.9%	
Griswold High School	87.4%	88.0%	85.0%	90.9%	91.5%	93.0%	
Thompson High School	85.9%	90.6%	91.7%	*	*	87.7%	
Woodstock Academy	95.4%	96.4%	96.7%	98.6%	98.4%	94.1%	

## Four-Year Graduation Rates 2012-18

### Free/Reduced Lunch Eligibility

	Eligibility	2012	2013	2014	2015	2016	2017	2018
Killingly	Free	57.1%	67.1%	67.6%	51.9%	68.1%	78.6%	79.5%
	Reduced	80.8%	76.5%	84.0%	85.7%	90.0%	84.0%	77.9%
	Not Eligible	88.2%	79.6%	87.2%	93.3%	96.0%	88.9%	89.3%
Putnam	Free	*	*	80%	84.2%	94.3%	83.3%	
	Reduced	*	*	*	*	*	*	
	Not Eligible	84.4%	87.2%	*	*	100%	*	
Plainfield	Free	73.5%	75.0%	*	*	*	74.2%	
	Reduced	91.3%	83.3%	*	*	*	81.8%	
	Not Eligible	88.5%	89.0%	89.2%	92.6%	91.0%	94.0%	
Griswold	Free	77.5%	72.5%	*	*	86.7%	*	
	Reduced	77.3%	85.0%	*	*	*	*	
	Not Eligible	92.6%	92.7%	93.8%	95.3%	96.4%	97.7%	
* The data are suppressed to ensure confidentiality.								
* N/A is displayed when a category is not applicable for a district or school								

## KHS Graduation Rate Data 2012-2018



## KHS Graduation Rate Data 2015-2018

Category	4-Year Graduation Rate				Still Enrolled				Other			
YEAR	2015	2016	2017	2018	2015	2016	2017	2018	2015	2016	2017	2018
All Students	76.8	79.5	84.5	87.0	10.3	11.4	7.1	6.3	12.8	9.0	8.0	6.8
Hispanic	0	*	*	93.3	0	*	*	0	100	*	*	6.7
Non-Hispanic	77.2	*	*	86.4	10.74	*	*	6.8	12.4	*	*	6.8
Indian or Alaska Native	75.0	N/A	*	100.0	25.0	N/A	*	0	0	N/A	*	0
Asian	100	*	*	100.0	0	*	*	0	0	*	*	0
Black	100	*	*	83.3	0	*	*	16.7	2	*	*	0
White	75.8	81.7	86.2	86.5	11.0	9.1	6.1	6.4	13.2	9.1	7.1	7.1
Two or More Races	83.3	N/A	*	33.3	0	N/A	*	33.3	16.7	N/A	*	33.3
Male	71.7	75.4	75.4	81.8	13.1	14.0	14.0	10.2	15.2	10.5	10.5	8.0
Female	81.7	84.4	84.4	91.3	7.7	8.3	8.3	2.9	10.6	7.3	7.3	5.8
ELL	100	*	*	100.0	0	*	*	0	0	*	*	0
Non-ELL	76.5	*	*	86.9	10.5	*	*	6.3	13.0	*	*	6.8
Eligible For Lunch	59.2	*	*	82.2	19.4	*	*	6.8	21.4	*	*	11.0
Eligible For Free Lunch	51.9	61.2	61.2	81.0	22.1	21.2	21.2	7.9	26.0	17.6	17.6	11.1
Eligible For Reduced Lunch	85.7	82.6	82.6	90.0	9.5	*	*	0	4.8	*	*	10.0
Not Eligible For Lunch	93.3	94.1	94.1	89.9	1.9	*	*	5.9	4.8	*	*	4.2
Special Education	42.4	40.5	40.5	75.7	30.3	43.2	43.2	16.2	27.3	16.2	16.2	8.1
Non-Special Education	83.5	87.9	87.9	89.7	6.5	4.6	4.6	3.9	10.0	7.5	7.5	6.5



# **Special Education Data**

Local - Special Education Enrollment –KPS								
Grade	2011-12	2012-13	2013-14	2014-15	2015-16	2016-17	2017-18	2018-19
PK	49	46	44	50	25	56	58	56
K	24	25	18	26	20	17	32	27
1st	26	22	26	25	24	24	21	36
2nd	22	28	27	10	18	22	25	27
3rd	26	30	24	24	28	13	19	20
4th	18	29	25	19	23	29	14	18
5th	24	18	29	25	29	18	27	21
6th	37	24	15	28	28	27	17	29
7th	24	33	19	23	24	29	27	19
8th	30	27	26	15	11	28	32	25
9th	25	48	35	14	21	19	36	38
10th	28	20	23	38	37	18	15	28
11th	19	21	12	38	28	33	18	16
12th	14	17	17	27	22	31	29	15
Transition	-	-	-	3	3	5	8	10
<b>Total</b>	<b>317</b>	<b>342</b>	<b>340</b>	<b>365</b>	<b>341</b>	<b>369</b>	<b>378</b>	<b>385</b>

**Special Education Enrollment – Total OOD & Local**

<b>Grade</b>	<b>2011-12</b>	<b>2012-13</b>	<b>2013-14</b>	<b>2014-15</b>	<b>2015-16</b>	<b>2016-17</b>	<b>2017-18</b>	<b>2018-19</b>
<b>PK</b>	<b>49</b>	<b>46</b>	<b>45</b>	<b>52</b>	<b>26</b>	<b>57</b>	<b>59</b>	<b>58</b>
<b>K</b>	<b>26</b>	<b>29</b>	<b>22</b>	<b>28</b>	<b>21</b>	<b>18</b>	<b>34</b>	<b>28</b>
<b>1st</b>	<b>30</b>	<b>29</b>	<b>28</b>	<b>29</b>	<b>28</b>	<b>31</b>	<b>22</b>	<b>41</b>
<b>2nd</b>	<b>26</b>	<b>33</b>	<b>35</b>	<b>13</b>	<b>22</b>	<b>25</b>	<b>33</b>	<b>28</b>
<b>3rd</b>	<b>30</b>	<b>34</b>	<b>30</b>	<b>33</b>	<b>31</b>	<b>19</b>	<b>21</b>	<b>28</b>
<b>4th</b>	<b>23</b>	<b>35</b>	<b>31</b>	<b>26</b>	<b>32</b>	<b>31</b>	<b>18</b>	<b>23</b>
<b>5th</b>	<b>28</b>	<b>22</b>	<b>37</b>	<b>32</b>	<b>35</b>	<b>30</b>	<b>28</b>	<b>27</b>
<b>6th</b>	<b>39</b>	<b>30</b>	<b>23</b>	<b>36</b>	<b>35</b>	<b>37</b>	<b>29</b>	<b>30</b>
<b>7th</b>	<b>28</b>	<b>38</b>	<b>26</b>	<b>30</b>	<b>31</b>	<b>38</b>	<b>36</b>	<b>29</b>
<b>8th</b>	<b>35</b>	<b>34</b>	<b>35</b>	<b>24</b>	<b>17</b>	<b>36</b>	<b>44</b>	<b>35</b>
<b>9th</b>	<b>31</b>	<b>56</b>	<b>56</b>	<b>24</b>	<b>29</b>	<b>28</b>	<b>46</b>	<b>59</b>
<b>10th</b>	<b>41</b>	<b>30</b>	<b>42</b>	<b>55</b>	<b>46</b>	<b>30</b>	<b>24</b>	<b>38</b>
<b>11th</b>	<b>30</b>	<b>33</b>	<b>21</b>	<b>51</b>	<b>40</b>	<b>39</b>	<b>30</b>	<b>25</b>
<b>12th</b>	<b>36</b>	<b>35</b>	<b>39</b>	<b>38</b>	<b>44</b>	<b>42</b>	<b>36</b>	<b>22</b>
<b>Transition</b>	<b>-</b>	<b>-</b>	<b>16</b>	<b>14</b>	<b>11</b>	<b>16</b>	<b>22</b>	<b>25</b>
<b>Total</b>	<b>452</b>	<b>484</b>	<b>486</b>	<b>485</b>	<b>448</b>	<b>477</b>	<b>482</b>	<b>496</b>

### Special Education -Total Out of District Placement K-12

Grade	2015-2016		2016-2017		2017-2018		2018-2019	
	OOD	Sunrise	OOD	EASTCONN	OOD	EASTCONN	OOD	EASTCONN
PK	1	0	1	0	1	0	3	0
K	1		1	0	1	1	0	1
1st	4	3	3	4	1	0	2	3
2nd	4	2	0	3	3	5	1	0
3rd	3	0	3	3	0	2	3	5
4th	9	4	1	1	2	2	0	5
5th	6	2	2	10	1	0	3	4
6th	7	4	5	5	2	10	1	0
7th	7	4	2	7	4	5	5	6
8th	6	2	1	7	7	5	6	4
9th	8	2	3	6	5	5	19	2
10th	9	4	7	5	9	0	7	3
11th	12	5	3	3	8	4	8	1
12th	22	2	5	7	5	2	7	2
Transition	8	0	6	4	14	0	13	0
Total	106	34	43	65	63	41	78	36

# **KPS Attendance Data 2013-2019**

### KPS Attendance Data 2013-19

KPS	2013-2014	2014-2015	2015-2016	2016-2017	2017-2018	2018-2019
Attendance	94.16%	94.19%	94.30%	93.70%	93.9%	93.8%
Chronic	80.79%	79.91%	79.45%	79.7%	82.5%	82.9%
# of Chronic	313/2411	299/2538	368/2509	345/2299	300/2286	296/2273
% Chronic	12.8%	9.7%	11.3%	15.0%	13.1%	13.0%

### KPS Attendance Data 2013-2019

KHS	2013-2014	2014-2015	2015-2016	2016-2017	2017-2018	2018-2019
Attendance	94.16%	92.53%	92.29%	92.1%	92.4%	92.0%
Chronic	75.84%	77.63%	77.27%	76.6%	80.8%	88.7%
# of chronic	167/827	154/828	197/841	163/793	140/778	141/787
% Chronic	20.19%	18.60%	23.42%	20.6%	18.0%	17.9%

KIS	2013-2014	2014-2015	2015-2016	2016-2017	2017-2018	2018-2019
Attendance	95.13%	94.78%	95.04%	93.7%	94.4%	94.5%
Chronic	86.89%	83.07%	81.89%	80.5%	83.3%	84.7%
# of chronic	80/747	71/766	94/739	94/680	69/661	75/617
% of Chronic	10.71%	9.27%	12.72%	13.8%	10.4%	12.2%

KCS	2013-2014	2014-2015	2015-2016	2016-2017	2017-2018	2018-2019
Attendance	95.50%	95.25%	94.12%	94.7%	94.5%	94.5%
Chronic	85.01%	83.30%	82.28%	85.3%	85.2%	83.9%
# of chronic	29/397	33/415	60/419	42/337	39/346	36/370
% Chronic	7.30%	7.95%	14.32%	12.5%	11.3%	9.7%

KMS	2013-2014	2014-2015	2015-2016	2016-2017	2017-2018	2018-2019
Attendance	95.24%	95.20%	96.67%	94.8%	95.0%	95.3%
Chronic	86.47%	80.39%	84.79%	83.2%	83.4%	84.5%
# of chronic	37/440	41/529	17/509	46/489	34/501	36/499
% Chronic	8.41%	7.75%	3.34%	9.4%	6.8%	7.2%

## KPS Preschool Enrollment

<b>Enrollment Numbers</b>	<b>June 1, 2015</b>	<b>June 1, 2016</b>	<b>June 1, 2017</b>	<b>June 1, 2018</b>	<b>June 3, 2019</b>
<b>Pre-K</b>	<b>109</b>	<b>129</b>	<b>119</b>	<b>117</b>	<b>74</b>
<b>Pre-K Special Ed</b>	<b>51</b>	<b>39</b>	<b>54</b>	<b>57</b>	<b>57</b>
<b>Total</b>	<b>160</b>	<b>168</b>	<b>173</b>	<b>174</b>	<b>131</b>



Enrollment	4 year olds enrolled:	3 year olds enrolled:	Enrollment type:
Goodyear=131  KCS=31  Total=162	Goodyear=76  KCS=26  Total=102	Goodyear=55  KCS=5  Total=60	Full/School Day=101  Part Day=61

Enrolled with an IEP:	Current waiting list:	Utilizing Transportation:	Utilizing Meal Program:
Goodyear=57  KCS=5  Total=62 (38% of Total Enrollment)	3 year olds=38  4 year olds=49  Total=87	Goodyear=77  KCS=24  Total=101	<b>Breakfast</b> Goodyear=41 KCS=10  <b>Lunch</b> Goodyear=52  KCS=16

# **Discipline Data**

**2013-2019**

### KPS Discipline Totals

KIS	2012-2013	2013-2014	2014-2015	2015-2016	2016-2017	2017-2018	2018-2019
ISS	229	162	134	93	66	107	82
OSS	94	47	21	53	37	50	46
BUS	14	5	7	5	51	17	14
OFFICE	1387	880	546	665	566	589	401

KMS	2012-2013	2013-2014	2014-2015	2015-2016	2016-2017	2017-2018	2018-2019
ISS	2	2	6	6	15	7	12
OSS	5	11	7	1	4	3	14
BUS	3	5	2	3	41	47	49
OFFICE	127	114	146	254	309	383	422

KCS	2012-2013	2013-2014	2013-2014	2015-2016	2016-2017	2017-2018	2018-2019
ISS	0	7	5.5	7	1	2	1
OSS	5	8	19	8	6	2	9
BUS	0	0	4	6	76	13	3
OFFICE	355	279	240	143	494	522	203

KHS	2012-2013	2013-2014	2014-2015	2015-2016	2016-2017	2017-2018	2018-2019
ISS	959	802	642	518	346	387	391
OSS	60	26	10	20	46	61	51
BUS	0	0	0	4	0	3	13
OFFICE	584	736	1035	1151	1953	2466	1818

**KPS Office Referral Data 2015-2019**

<b>KPS</b>	<b>2014-2015</b>	<b>2015-2016</b>	<b>2016-2017</b>	<b>2017-2018</b>	<b>2018-2019</b>
<b>Office Referrals</b>	<b>1967</b>	<b>2213</b>	<b>3322</b>	<b>3960</b>	<b>2844</b>

# **Parent and Staff Survey Results**

## Parent Survey Data 18/19

	How often do you meet with teachers at your child's school? 5=weekly 1=Almost Never	How often do you know how your child is doing in school before you receive your child's report card?	How involved have you been with the PTO at your child's school? 5=Extremely Involved 1=Almost Never	In the past year, how often have you volunteered at your child's school? 5=Weekly 1=Almost Never	In the past year, how often have you visited your child's school (not including pick-up or drop-off)?
GECC	3.1	4.3	1.3	1.6	2.8
KCS	3.0	4.1	1.7	1.8	3.0
KMS	2.8	3.8	1.4	1.8	2.8
KIS	2.5	3.4	1.5	1.6	2.8
KHS	2.0	4.1	1.4	1.6	2.9
<b>Grand Total</b>	<b>2.4</b>	<b>4.1</b>	<b>1.5</b>	<b>1.7</b>	<b>2.9</b>
	How often does your child read for fun? 5=Almost all the time 1=Almost never	How much effort does your child put into school related tasks after school? 5=Tremendous effort 1=Almost no effort	How motivated is your child to learn the subjects covered in class? 5=Extremely motivated 1=Not at all motivated	When working on school activities at home, how easily is your child distracted? 1=Easily Distracted, 5=Not at all distracted	On average, how well does your child work independently on learning activities at home?
GECC	3.9	3.5	4	3.6	3.7
KCS	3.8	3.6	3.9	3.2	3.5
KMS	3.6	3.4	3.8	3.1	3.4
KIS	2.7	3.2	3.4	3.1	3.5
KHS	2.8	3.4	3.4	3.4	3.9
<b>Grand Total</b>	<b>3.1</b>	<b>3.4</b>	<b>3.6</b>	<b>3.2</b>	<b>3.6</b>

## Parent Survey Data 18-19

	How often does your child give up on learning activities that s/he finds hard? 1=All the time, 5=Almost Never	To what extent do you think that children enjoy going to your child's school?	How well do administrators at your child's school create a school environment that helps children learn?	Overall, how much respect do you think the children at your child's school have for the staff?	Overall, how much respect do you think teachers at your child's school have for the children?
GECC	3.4	4.3	4.5	4.7	4.7
KCS	3.6	4.1	4.2	4.4	4.3
KMS	3.4	3.8	4.2	4.3	4.3
KIS	3.5	3.2	3.7	3.7	3.7
KHS	3.7	3.2	3.4	3.6	3.5
<b>Grand Total</b>	<b>3.6</b>	<b>3.4</b>	<b>3.7</b>	<b>3.9</b>	<b>3.8</b>

Scale for how much of a problem are the following issues: 1=Very large problem, 5=No problem at all

	Childcare needs.	Transportation related challenges?	Concerns about getting to the school safely?	How busy your schedule is?	You are unsure in how to become a volunteer at your child's school.
GECC	4.6	4.6	4.9	3.3	3.5
KCS	4.1	4.6	4.8	3.0	4.4
KMS	4.4	4.8	4.9	3.0	4.6
KIS	4.6	4.6	4.7	3.2	4.3
KHS	4.8	4.6	4.7	3.2	4.2
<b>Grand Total</b>	<b>4.6</b>	<b>4.6</b>	<b>4.8</b>	<b>3.1</b>	<b>4.3</b>

## Parent Survey Data 18/19

	The school provides little information about involvement opportunities?	The school is not welcoming to parents?	You do not feel a sense of belonging with your child's school community?	Negative memories of your own school experience?	Your child does not want you to contact the school?	You worry that adults at the school will treat your child differently if you raise a concern?
GECC	3.7	4.8	4.5	4.8	4.9	4.7
KCS	4.3	4.7	4.5	4.7	4.9	4.6
KMS	4.5	4.8	4.6	4.7	4.9	4.6
KIS	4.0	4.4	4.2	4.7	4.6	4.2
KHS	3.7	4.3	4.1	4.6	4.4	3.9
<b>Grand Total</b>	<b>3.9</b>	<b>4.5</b>	<b>4.3</b>	<b>4.7</b>	<b>4.6</b>	<b>4.2</b>

	How often do you worry about violence at your child's school? 1=Almost Always, 5=Almost Never	If a student is bullied at your child's school, how difficult is it for him/her to get help from an adult? 1=Extremely Difficult, 5=Not At All Difficult	How likely is it that someone from your child's school will bully him/her online? 1=Extremely Likely, 5=Not At All Likely	Overall, how unsafe does your child feel at school? 1=Extremely Unsafe, 5=Not At All Unsafe	To what extent are drugs a problem at your child's school? 1=Very Large Problem, 5=Not A Problem At All
GECC	4.1	4.6	4.9	4.7	5.0
KCS	3.7	4.3	4.8	4.7	4.9
KMS	3.7	4.0	4.4	4.5	4.9
KIS	3.4	3.8	3.3	4.1	4.2
KHS	3	3.7	3.3	3.7	3.1
<b>Grand Total</b>	<b>3.3</b>	<b>3.9</b>	<b>3.7</b>	<b>4.1</b>	<b>4.0</b>



## Number of Responses

Building	Parent
GECC	16
KCS	70
KMS	83
KIS	151
KHS	215
<b>Total</b>	<b>535</b>