



SEPTEMBER

Jeff Mueller, printmaker

Artist's Reception 9/27 | FRI | 5:30-6:30 p.m.
 9/4-11/16 | Gallery

OCTOBER

Music Ensembles Concert

10/18 | FRI | 7:30 p.m. | Colony Hall Auditorium

Featuring music from student ensembles, orchestras, and choruses.

Wallingford Symphony Orchestra - Family Concert!

10/20 | SUN | 2:00 p.m. | Colony Hall Auditorium

A community open house for Ann and George Colony Hall, followed by WSO's 45th season premiere of "Disney Magic."



NOVEMBER

THE 25TH ANNUAL PUTNAM COUNTY SPELLING BEE

11/1-11/3 | FRI 7:30 p.m. | SAT 7:30 p.m. | SUN 2:00 p.m. | Joan Harris Gelb Theater (Chapel)

Six awkward spelling champions learn that winning (and losing) isn't everything in this student production of the 2005 Broadway musical comedy. Directed by Tracy James.

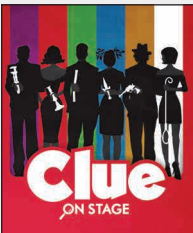


Music Recital (voice, piano)

11/10 | SUN | 2:00 p.m. | Colony Hall Recital Hall

Clue: On Stage

11/14-11/16 | THUR-SAT | 7:30 p.m. | Main Stage
 Adapted from the 1985 Paramount motion picture, based on the classic Hasbro board game, *Clue* is a madcap comedy that will keep you guessing until the final twist. Directed by Kate Doak.

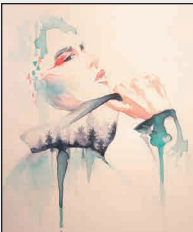


Music Recital (instrumental)

11/17 | SUN | 2:00 p.m. | Colony Hall Recital Hall

Music Faculty Concert

11/17 | SUN | 4:00 p.m. | Colony Hall Auditorium
 Free concert showcasing Choate's musicians. Donations to Music Lesson Scholarship Fund gratefully accepted.



DECEMBER

Student Artwork Exhibition

12/3 - 12/19 | Gallery

Featuring student artwork from all visual arts classes, created during the fall term.

Wallingford Symphony Orchestra - Annual Holiday Concert - Nutcracker Sweet

12/8 | SUN | 2:00 p.m. | Colony Hall Auditorium

Featuring New England Jazz Ensemble and the chorus from The Country School in Madison, CT.



Songs of Refuge and Resistance, featuring Theo Bleckmann and The Westerlies

12/13 | FRI | 7:30 p.m. | Colony Hall Auditorium

Grammy-nominated vocalist and composer Theo Bleckmann and brass quartet The Westerlies collaborate in this poignant music performance.

Lessons and Carols

12/15 | SUN | 5:00 p.m. | Seymour St. John Chapel

Annual holiday service of scripture and song with anthems sung by Choate choruses.



JANUARY

Jane Gustin, mixed media painter

1/13 - 2/15 | Gallery

Gift-Passion-Purpose Project: The Journey of a Woman in the Arts and Beyond

1/17 | FRI | 7:30p.m. | Main Stage

Dr. Tiffany Renée Jackson presents *Gift-Passion-Purpose Project: The Journey of a Woman in the Arts and Beyond*, a one-woman show based on her youth and adult life as a performer, fitness consultant/competitor, and educator. Dr. Jackson appeared on *America's Got Talent* as the opera singing bodybuilder, "Necessarydiva".



FEBRUARY

Fringe Festival

2/6-2/7 | THURS 7:00 p.m. | FRI 7:00 p.m. & 9:00 p.m. | Joan Harris Gelb Theater (Chapel)

Annual performing arts festival written, directed, and performed by Choate students. Produced by Kate Doak.

A Midsummer Night's Dream

2/13-2/15 | THURS-SAT | 7:30 p.m. | Main Stage

Love is love, in all its beauty and chaos, in this classic Shakespearean comedy, performed by Choate students. Despite marital squabbles between fairy royalty, and even the interference of misguided magical potions, true love prevails. A perfect confection for Valentine's Day! Directed by Tracy Ginder-Delventhal.



Music Recital (voice, piano)

2/16 | SUN | 1:00 p.m. | Colony Hall Recital Hall

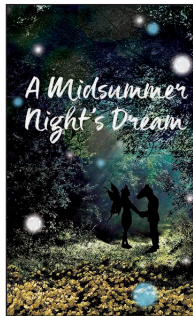
Music Recital (instrumental)

2/16 | SUN | 3:00 p.m. | Colony Hall Recital Hall

Instrumental Ensembles Concert

2/21 | FRI | 7:30 p.m. | Colony Hall Recital Hall

Featuring Choate's instrumental groups: Wind Ensemble, String Orchestra, Jazz Ensemble, and Symphony Orchestra.



Music Recital (chamber ensembles)

2/23 | SUN | 3:00 p.m. | Colony Hall Recital Hall

Choral Concert

2/29 | SAT | 8:30 p.m. | Seymour St. John Chapel
 Featuring Choate's Festival and Chamber Choruses.

MARCH

Wallingford Symphony Orchestra - Happy 250th Birthday, Ludwig van Beethoven

3/8 | SUN | 2:00 p.m. | Colony Hall Auditorium

Featuring pianist Kariné Poghosyan.



Student Artwork Exhibition

3/23-4/24 | Gallery

Featuring student artwork from all visual arts classes, created during the winter term.

Dance Concert

3/27-3/29 | FRI-SAT 7:30 p.m. | SUN 2:00 p.m. | Main Stage

Featuring dancers from Choate's Dance Program in student, faculty and guest choreography.





APRIL

American Ballet Theatre Studio Company

4/4 | SAT | 7:30 p.m. | Main Stage

American Ballet Theatre Studio Company brings the artistry and virtuosity of American Ballet Theatre to the Paul Mellon Arts Center Main Stage with this mixed program of beloved classical excerpts and daring new works, performed by dancers on the verge of international careers.

Wallingford Symphony Orchestra - Annual Spring Concert - Hungarian Night

4/25 | SAT | 7:30 p.m. | Colony Hall Auditorium

Beethoven's birthday celebration continues with musical selections performed by winners of the Mitchell Family Fund String Competition.



MAY

Choral Concert

5/8 | FRI | 7:30 p.m. | Seymour St. John Chapel

Featuring Choate's Festival and Chamber Chorus.

Music Recital (voice, piano, organ)

5/10 | SUN | 1:00 p.m. | Seymour St. John Chapel

Instrumental Ensembles Concert

5/15 | FRI | 7:00 p.m. | Colony Hall Auditorium

Featuring Choate's instrumental groups.

Music Recital (instrumental)

5/17 | SUN | 3:00 p.m. | Colony Hall Recital Hall



DISASTER!

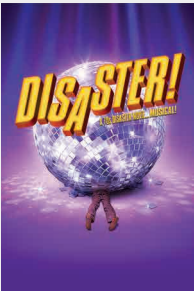
5/21-5/23 | THURS-SAT 7:30 | SAT 2:00 p.m. & 7:30 p.m. | Main Stage

Earthquakes, tidal waves, infernos and the unforgettable songs of the '70s take center stage in this year's student spring musical DISASTER!, a side-splitting homage to classic disaster films. Directed by Deighna DeRiu.

Arts Concentration Seniors' Exhibition

5/22 | FRI | 6:00 p.m.- 7:30 p.m. | Main Stage

Student work from visual artists in Choate's signature Arts Concentration Program.



Composers' Concert

5/26 | TUE | 5:00 p.m. | Colony Hall Recital Hall

Original compositions written by Choate music students and performed by a professional chamber ensemble.

Music Recital

5/29 | FRI | 5:00 p.m. | Colony Hall Recital Hall

Featuring student musicians in chamber and solo works.



JULY

Wallingford Symphony Orchestra - July 2020 Pops!

7/5 | SUN | 7:00 p.m. | Chapel Lawn

WSO's annual outdoor Pops Concert.

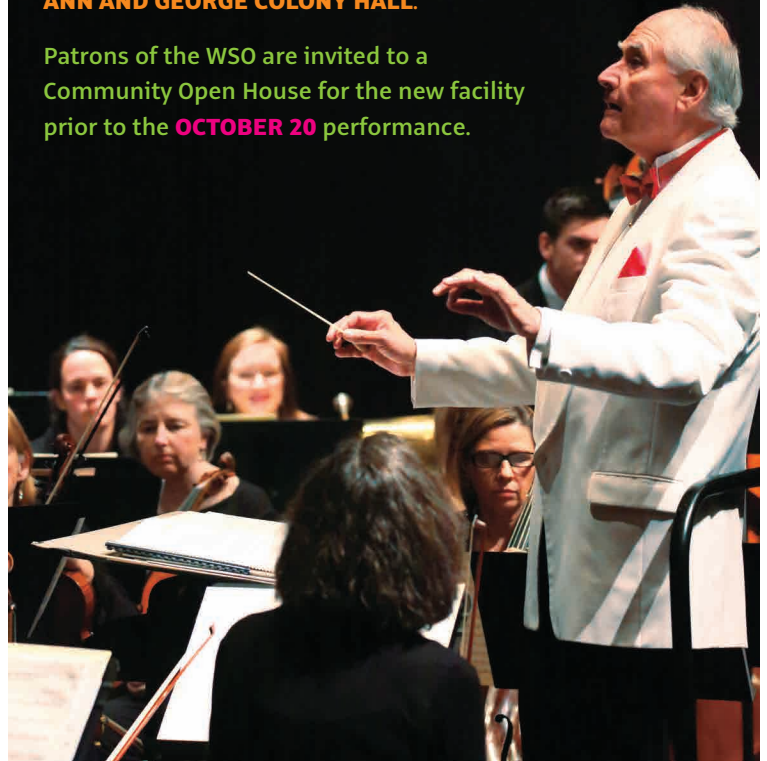
ALL TICKETED PERFORMANCES: \$15*

And the **PMAC Pass** can save you even more money when purchasing multiple tickets. Plus, we offer FREE admission to student recitals, student dance concerts, our annual festival *Lessons & Carols*, and all gallery exhibits. Choate Rosemary Hall believes in the importance of promoting art and community in its hometown of Wallingford, and encourages the PMAC to schedule free events that are open to the entire community. The School also subsidizes the expense of guest artist performances and student productions. *Wallingford Symphony Orchestra tickets excluded - Visit www.wallingfordsymphony.org for ticket pricing.

A special invitation for patrons of the Wallingford Symphony Orchestra...

The Wallingford Symphony Orchestra kicks off its 45th season in a new venue – **ANN AND GEORGE COLONY HALL.**

Patrons of the WSO are invited to a **Community Open House** for the new facility prior to the **OCTOBER 20** performance.



www.wallingfordsymphony.org



Creating Art & Building Community

PURCHASING TICKETS*

Tickets may be purchased online at www.choate.edu/boxoffice or by calling the Box Office at (203) 697-2398. MasterCard, Visa, Discover and American Express are accepted. Group discounts for parties of 8 or more are available, as is handicap seating (which must be reserved). Please contact the Box Office for more information.

Visit www.wallingfordsymphony.org to purchase tickets for Wallingford Symphony Orchestra events..

BOX OFFICE HOURS

The Box Office is located through the glass doors to the left. When school is in session, walk up hours are: Monday–Friday, 1:00–4:00 p.m. The Box Office is also open one hour prior to each performance.

THE PAUL MELLON ARTS CENTER

The Arts Center supports a wide range of artistic opportunities, accessible to all within the School and its neighboring communities thanks to free or modest admission fees. Since 1972, the Paul Mellon Arts Center has served as a creative hub, presenting guest artist, faculty, and student concerts, productions, exhibits, and more.