



GARRISON FOREST SCHOOL

300 Garrison Forest Road | Owings Mills, MD 21117 | p 410-559-3129 | f 410-559-3108
 CEEB 210580 | www.gfs.org

Christopher Hughes, Head of School
 Reema Khanchandani, Head of Upper School

Ann Marie Strauss, Director of College Counseling, annmariestrauss@gfs.org
 Stephanie Metruk, Associate Director of College Counseling, stephaniemetruk@gfs.org
 Lynn Lyon-Vaiden, College Counseling Coordinator, lynnlyonvaiden@gfs.org

SCHOOL PROFILE 2019–2020

THE SCHOOL

Garrison Forest School, founded in 1910, is a PreK–12 girls' day and boarding school, located on 100 acres with easy access to the Baltimore and Washington areas. It is accredited by the Middle States Association of Colleges and Secondary Schools and the Association of Independent Maryland Schools. 100% of our graduates are accepted to four year colleges and universities.

ENROLLMENT

Total – 523. Upper School – 215. Senior Class – 55. Garrison Forest School is a diverse community. 35% of the Upper School population identifies as students of color and 14% are international.

GRADUATION REQUIREMENTS FOR THE CLASS OF 2020				
English	4 credits	History	3 credits	It is expected that a student will carry at least five academic credits per semester and will graduate with a minimum of 22 credits.
Mathematics	3 credits	The Arts	2 credits	
Science	3 credits	Physical Education	2 credits	
Foreign/Classical Language	3 credits			

Advanced Placement (AP) Courses	Additional AP courses are offered through Online School for Girls.	
Biology	Computer Science Principles	Psychology
Calculus AB	English Literature	Spanish Language and Culture
Calculus BC	Environmental Science	Spanish Literature and Culture
Chemistry	French Language and Culture	Statistics
Chinese Language and Culture	Latin	US History

AP/Honors Courses Offered	Junior Year	Senior Year
15 AP courses	2 AP course limit*	3 AP course limit*
19 Honors courses	NO honors sections offered in English, History and Biology for Class of 2020; It is uncommon to take more than four honors courses due to scheduling constraints.	

*Exceptions to these limits are made rarely by formal request on an individual basis.

UPPER SCHOOL PROGRAM HIGHLIGHTS

Women in Science and Engineering (WISE) – an experiential research program for juniors and seniors in partnership with the Johns Hopkins University. WISE participants are paired with JHU faculty and work as a member of a research team. Placements are made in JHU's Whiting School of Engineering, Krieger School of Arts & Sciences, Bloomberg School of Public Health and the Johns Hopkins Archeological Museum. The project culminates in a final oral and written presentation for JHU and GFS faculty.

The Jenkins Fellows Program—endowed in 2005, the program empowers GFS students to promote and commit to global community service. Sophomores and juniors are invited to research opportunities and fellows are selected through a competitive application process. Jenkins Fellows immerse themselves in summer service and return to campus to present reflections on their experiences to the community. Jenkins Fellows serve as leaders of the student Service League Board for the remainder of their time at GFS. Recent projects include volunteering in an orphanage in Cambodia, working with Habitat for Humanity in Milwaukee, WI, volunteering in a hospital in the Czech Republic, mentoring children and working with tribal elders on the Northern Cheyenne Indian Reservation in Montana, and supporting young woman survivors of human trafficking in a Sicilian (Italy) community center.

Independent Senior Project (ISP)

Students participate in a two-week unpaid internship in a professional environment at the end of their senior year. Recent ISP sites include Smithsonian Institution, Under Armour, Roominate (Silicon Valley start-up), T. Rowe Price, Johns Hopkins Hospital, Special Olympics, Metropolitan Museum of Art, Baltimore Magazine, NASA's Goddard Space Center, Walt Disney Family Museum and Habitat for Humanity, as well as schools and other non-profit organizations.

COURSES AVAILABLE TO STUDENTS IN THE CLASS OF 2020

<p>ENGLISH English IV (AP) English I, II, III, IV Literature and Composition</p>	<p>Adv. Calculus and Linear Alg. (Post AP)</p> <p>SCIENCES (all w/lab) Biology (AP) Biology Physics (H) with Calculus Physics (H) Physics Chemistry (AP) Chemistry (H) Chemistry Environmental Science (AP) Biochemistry, Microbiology(H) Ecology, Evolutionary Biology Anatomy and Physiology Engineering Design The Science of Art (.5) WISE (.5)</p>	<p>LANGUAGES Chinese V (AP) Chinese II (H), III (H), IV (H) Chinese I, II, III, IV, V French Language (AP) French II (H), III (H), IV (H), V (H) French I, II, III, IV, V Latin (AP) Latin II (H), III (H), IV (H) Latin I, II, III, IV, V Latin Literature: Prose and Poetry (.5) Spanish Language (AP) Spanish Literature (AP) Spanish II (H), III(H), IV (H) Spanish I, II, III, IV, V Ind. Study in Ancient Greek</p>	<p>HISTORY World History I World History II US History (AP) US History Psychology (AP) Art History Developmental Psychology (.5) Economics (.5) Contemporary World Issues (.5) Recent American History (.5) World Religions (.5) Stopping Genocide (.5) Modern Africa (.5) Modern Middle East (.5) Modern Latin America (.5) Int'l. Perspectives: Women/Gender/Health (.5)</p>	<p>COMPUTER/ TECHNOLOGY Computer Science Principles (AP) Adv. Game Design (.5) Intro to Computer Prog.: Game Design (.5)</p>
<p>MATHEMATICS Algebra I Geometry with Algebraic Thinking Geometry Geometry/Trigonometry (H) Algebra II</p> <p>Algebra II /Trigonometry (H) Functions & Trigonometry Precalculus Precalculus (H) Statistics Statistics (AP) Calculus Calculus AB (AP) Calculus BC (AP)</p>				

THE ARTS: GFS enjoys a rich tradition in the arts. Our comprehensive arts curriculum offers breadth and depth in the fine and performing arts. In addition to the traditional offerings, the arts faculty provides STEM-relevant opportunities for hands-on learning, problem solving, and creativity through collaboration with our science, math, and computer science faculty. A complete list of courses in the arts can be found in our curriculum guide.

Online School for Girls: Garrison Forest School is an affiliate member of OSG. A student may supplement her curriculum by requesting to enroll in an online course through OSG if the course she seeks is not offered at GFS. Online enrollments are approved by the administration, as appropriate, on an individual basis.

GFS Policy for Reporting Disciplinary Infractions:

GFS expects all students to answer, with honesty, questions about discipline/honor infractions when asked on college applications. A Senior who receives a sanction of suspension is required by the School to notify colleges to which she is applying, has applied or has been accepted. The School will assist the student, at her request, in fulfilling this requirement.

If a student withdraws from GFS for any reason during the senior year, the school expects the student to notify, in writing, the colleges to which she has applied, been accepted or enrolled, of her decision to withdraw. GFS abides by the National Association of College Admissions Counselors (NACAC) Code of Ethical and Professional Practices (CEPP). In accordance with the CEPP, GFS will disclose to colleges a senior's change in enrollment either pre or post college admission.

SCHOLARSHIP RECOGNITION PROGRAMS

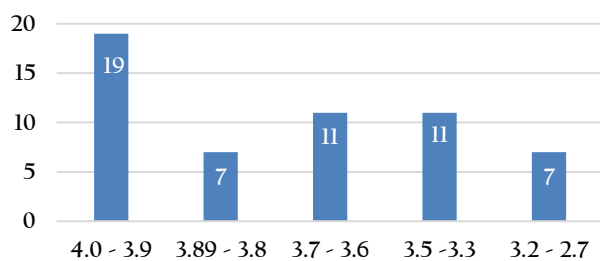
Class of 2019

National Merit Commended Scholars - 2

ADVANCED PLACEMENT RESULTS: 2019

Number of students taking an AP exam: 95
Total number of AP exams taken: 226
Percentage of students scoring 3 or above: 84%

GPA Distribution for the Class of 2020
(Includes all courses)



Class of 2019

MIDDLE 50% SAT

SAT Evidence Based Reading & Writing 600-700
SAT Math 560-740

MIDDLE 50% ACT

ACT Composite 25-30

UNWEIGHTED CUMULATIVE GPA:

Includes all courses in grades 9-11. 4.0 is the highest GPA.

Full Range of Class: 2.7 – 4.0 Median: 3.74

It is the policy of the school not to rank.

GRADING SCALE:

90—100	A- to A+	4.0
80—89	B- to B+	3.0—3.9
70—79	C- to C+	2.0—2.9
60—69	D- to D+	1.0—1.9

GRADE DISTRIBUTION FOR COURSES IN WHICH THE CLASS OF 2020 WERE ENROLLED												
	A+	A	A-	B+	B	B-	C+	C	C-	D+	D	TOTAL
Humanities												
English III	2	14	17	4	7	8	2	3				57
AP US History	1	8	8	4	2							23
US History		9	5	7	11	1	1					34
AP Art History	1											1
AP Macroeconomics, AP Microeconomics		1	1	1		1	1	1				6
History Electives	25	19	10	3	4	2						63
Mathematics												
Adv. Calculus & Linear Algebra	6	3	2		1							12
AP Calculus AB			1	4	4	2		1	1			13
AP Calculus BC		5	4		2		1					12
AP Statistics	2	4	2	1	4	3			1			17
Calculus		5		2	1	4	2					14
Precalculus (H)	1	6	2	3	6	3						21
Precalculus		3	3	4	5	2	4	2		1		24
Functions and Trigonometry				1	2			2	1		1	7
Algebra II/Trigonometry (H)	1	5	6	3	6	3	2					29
Algebra II		1	1	2		3	1	1		2		11
Science												
AP Biology		3	4	3	6	1						17
AP Chemistry		2	1	1				1				5
AP Environmental Science			1		3	1						5
BioChem/MicroBio (H)		2	8	5	2							17
Physics (H) with Calculus	2	5		1								8
Physics (H)	2	5	6	3	3	2	1					22
Physics		4	4	4	4	2	2	3	1			24
Ecology and Evolutionary Biology		3	3	4	2	3						15
Engineering Design			6	5	2							13
WISE	8	9	6						1			24
Foreign Language												
AP Latin	1				2							3
Latin Literature: Prose		3	3	4								10
AP French		1										1
French III, IV, IV(H), V(H)	1	3	2		3	3	1					13
Spanish II(H), III, III(H), IV, IV(H)	1	12	19	12	13	5	1		1			64
Chinese IV(H)		1				1						2
Computer/Technology												
AP Computer Science Principles		1	2	2	2	2	1					10
AP Computer Science A			1									1
Intro to Computer Programming	1	2		1	1							6

THREE YEAR SURVEY OF COLLEGE ACCEPTANCES

The 69 members of the Class of 2019 are planning to attend 53 different colleges.

Adrian College	Hartwick College	Roger Williams University	University of California, San Diego
Allegheny College	Haverford College	Rollins College	University of California, Santa Barbara
American University	*High Point University(2)	Rowan University	University of California, Santa Cruz
Appalachian State University	Hobart and William Smith Colleges	Rutgers University	*University of Colorado at Boulder
Arizona State University	Hofstra University	*Saint Joseph's University	University of Connecticut
Auburn University	*Howard Community College	Saint Michael's College	University of Delaware
Babson College	*Howard University	Salisbury University	University of Denver
Belmont University	*Indiana University	Sarah Lawrence College	University of Illinois
*Boston College	Ithaca College	Savannah College of Art and Design	*University of Kentucky
*Boston University	*James Madison University(2)	School of the Art Institute of Chicago	University of Lynchburg
Brandeis University	*Johns Hopkins University	School of Visual Arts	University of Maine
Bridgewater College	Johnson & Wales University	Seton Hall University	University of Mary Washington
*Bucknell University	Kenyon College	Sewanee: The University of the South	University of Maryland, Balt. Co.
*Carnegie Mellon University	Lafayette College	Skidmore College	University of Maryland, College Park
Carroll University (Wisconsin)	Lake Forest College	Southern Methodist University	University of Maryland, Inst. of Applied Agriculture
Case Western Reserve University	Lesley University	*Spelman College	*University of Massachusetts
Chapman University	Louisiana State University	St. John's University	University of Miami
Chatham University	Loyola University Chicago	St. Mary's College of Maryland	*University of Michigan
Clark Atlanta University	Loyola University Maryland	Stevenson University	University of Mississippi
Clark University	Loyola University New Orleans	*Swarthmore College	University of New Hampshire
*Clemson University	Lynn University	*Syracuse University	U. of North Carolina Wilmington
*Coastal Carolina University (2)	Macalester College	*Temple University	University of North Texas
*Colgate University	Maine College of Art	Texas A&M University	*University of Oregon
College of Charleston	Marist College	Texas Tech	University of Pennsylvania
College of William and Mary	Marquette University	*Texas Christian University (2)	*University of Pittsburgh
Colorado School of Mines	Marshall University	The American University of Paris	University of Rhode Island
Colorado State University	*Maryland Institute College of Art(2)	The Catholic University of America	University of Richmond
Connecticut College	Marymount University	The College of Wooster	*University of South Carolina (3)
Cornell University	Massachusetts Coll. of Art and Design	The George Washington University	University of South Carolina-Aiken
*Davidson College	McDaniel College	The New School	University of South Florida
Denison University	Miami University, Oxford	The Ohio State University	University of Southern California
DePaul University	Michigan State University	*The University of Alabama	*University of Vermont
Dickinson College	Monmouth University	The University of North Carolina at Chapel Hill	University of Virginia
Drew University	*Morgan State University	The University of Tampa	*University of Washington
*Drexel University (2)	Mount St. Mary's University	The University of Texas	University of Wisconsin
*East Carolina University	*New York University (2)	*Towson University(3)	Ursinus College
Eckerd College	*North Carolina A&T State Univ.	Trinity College	Vanderbilt University
Elizabethtown College	North Carolina State University	Trinity College Dublin	Vassar College
*Elon University(2)	*Northeastern University	Trinity University	*Villanova University
Emerson College	Ohio Wesleyan University	*Tufts University	Virginia Commonwealth University
Emory & Henry College	Old Dominion University	*Tulane University (2)	*Virginia Tech (3)
Emory University	Otterbein University	Tuskegee University	*Wake Forest University
Fairleigh Dickinson University	Pacific Northwest College of Art	Union College	*Washington and Lee University
Finlandia University	Pennsylvania State University	United States Naval Academy	Washington College
Florida A&M University	Pepperdine University	University of Arkansas	Washington University in St. Louis
Florida Southern College	Pratt Institute	*University of California, Berkeley	*Wellesley College
Florida State University	*Princeton University	University of California, Davis	Wesleyan University
Fordham University	Purdue University	University of California, Irvine	West Virginia University
*Franklin & Marshall College	Queens University of Charlotte	University of California, Los Angeles	Widener University
*Furman University	Rensselaer Polytechnic Institute		Xavier University of Louisiana
George Mason University	Rhodes College		
*Georgetown University	Roanoke College		
Georgia Inst. Of Technology	*Rochester Institute of Technology		
Gettysburg College			
Gordon College			
Goucher College			
Hamilton College			
*Hampton University			

Traditionally, 100% of Garrison Forest's graduates over the past three years have been accepted to four-year colleges and universities.

* Colleges entered by one or more students of the Class of 2019
The Class of 2019 applied to an average of 6.3 colleges each.