



WEST BLOOMFIELD SCHOOL DISTRICT
Educating Students to be their Best IN and FOR the World

PLANNING UPDATE

September 12, 2019



Architect of Record

Construction Manager

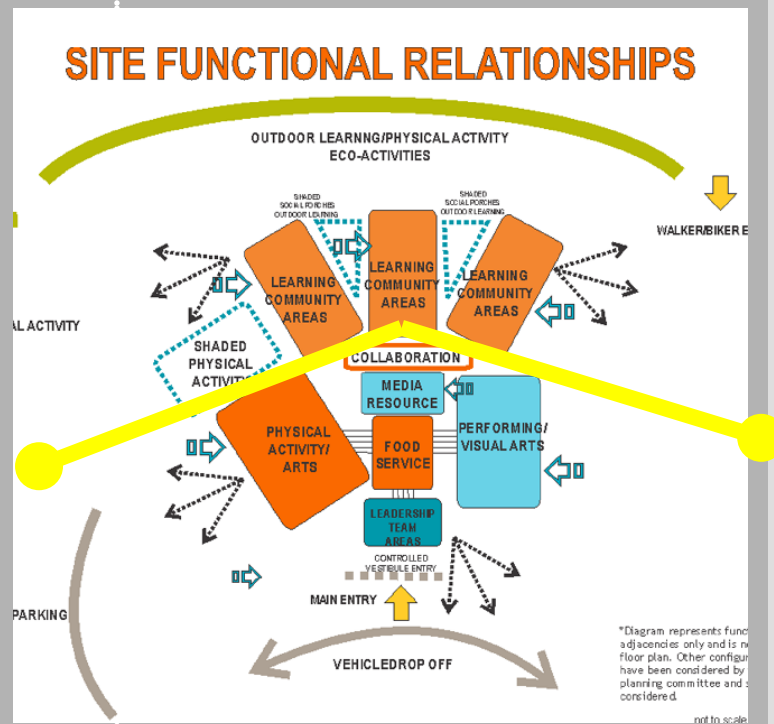
New West Bloomfield Middle School-Timeline

- 1. Site planning and design – BOE approval of bids 9/23/2019**
- 2. Building Planning and Design – November 18 out for bidding**
- 3. Start of construction (mass grading) – Fall 2019**
- 4. Grand opening – September 2022**



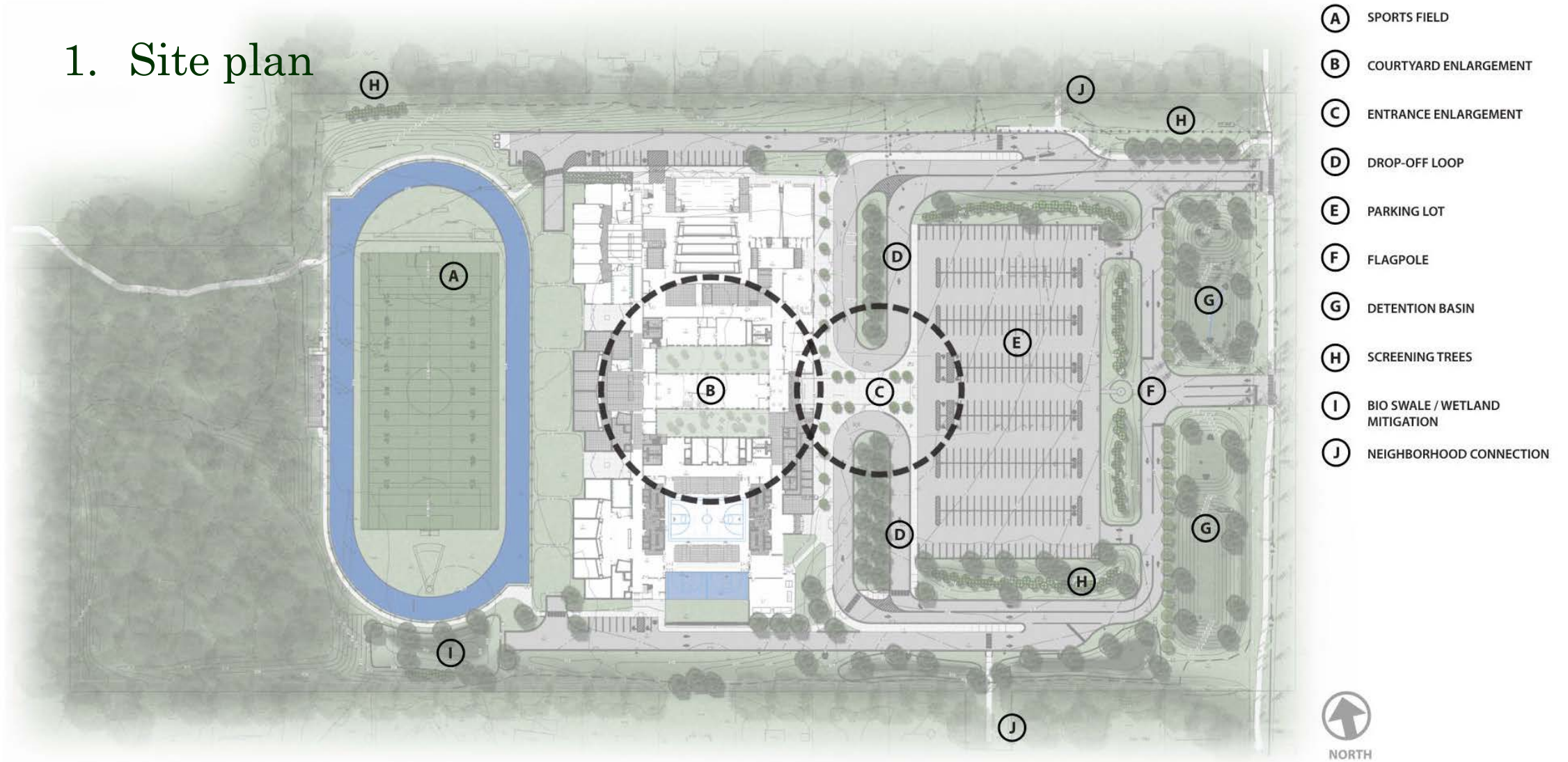
New West Bloomfield Middle School

1. Site conceptual plan



New West Bloomfield Middle School

1. Site plan



New West Bloomfield Middle School

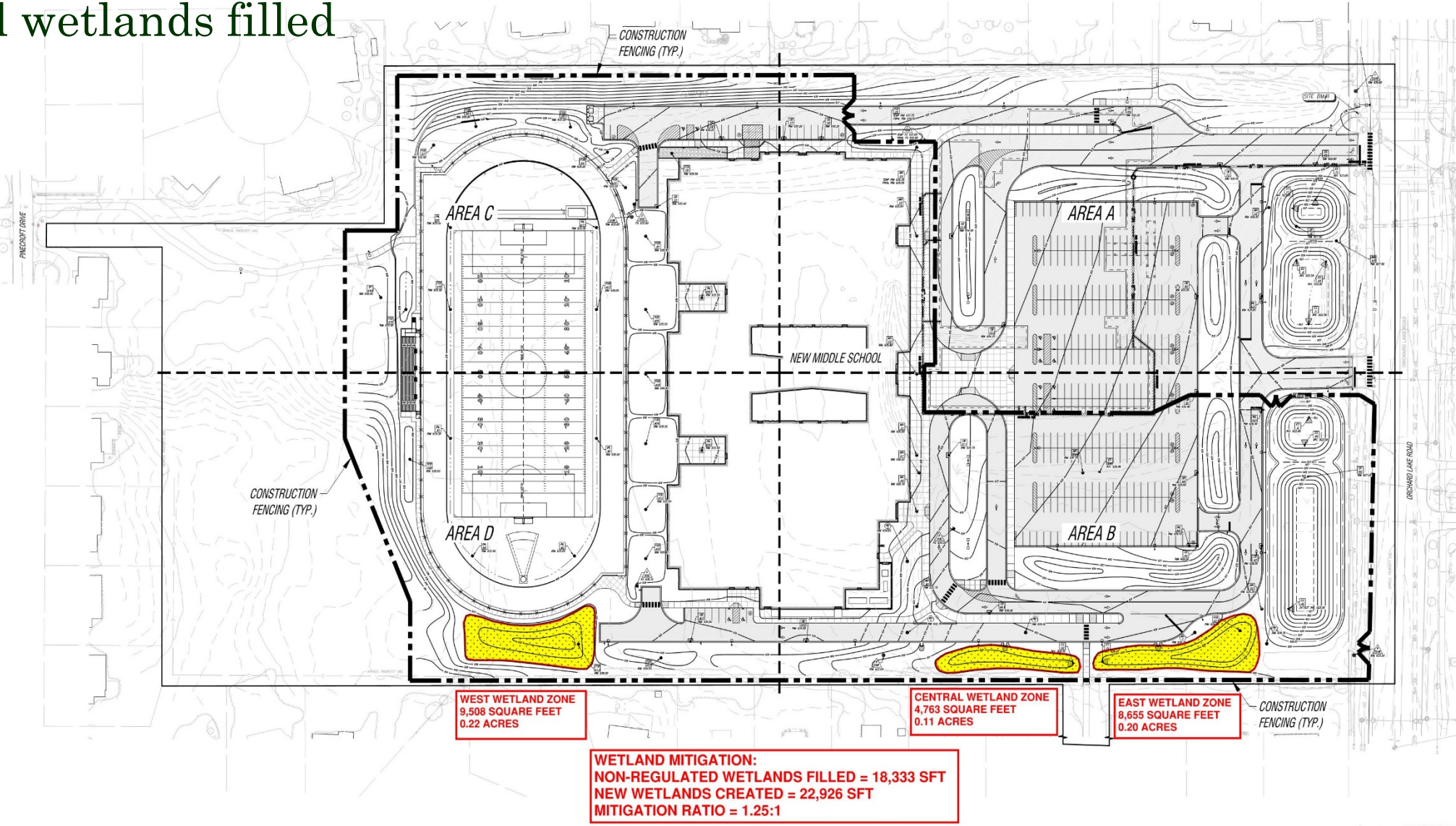
1. Plants

WEST BLOOMFIELD MIDDLE SCHOOL - PRELIMINARY LANDSCAPE DESIGN



New West Bloomfield Middle School

- 1. Wetland mitigation (1.25 for 1 mitigation plan)
- 2. .42 acres non-regulated wetlands filled



KEY PLAN

ISSUE DATE: 7/19/19
ISSUED FOR: BOIS

7/26/19 ADDENDUM 1
8/9/19 ADDENDUM 2
9/10/19 ADDENDUM 4

DRAWN: J. SERBINSKI
CHECKED: T. SOVEL
APPROVED: T. SOVEL

FRENCH associates
236 Mill Street
Rochester, MI 48307
P: 248.656.1377
F: 248.656.7746
© FRENCH ASSOCIATES, INC.

SPALDING DeDECKER
Engineering and Surveying
Excellence Since 1954
905 South Blvd. East
Rochester Hills, MI 48307
Phone: (248) 844-5400
Fax: (248) 844-5404
www.sda-eng.com
(800) 598-1800

PROJECT: WEST BLOOMFIELD SCHOOL DISTRICT WEST BLOOMFIELD MIDDLE SCHOOL
WEST BLOOMFIELD, MICHIGAN

SHEET: GENERAL GRADING PLAN

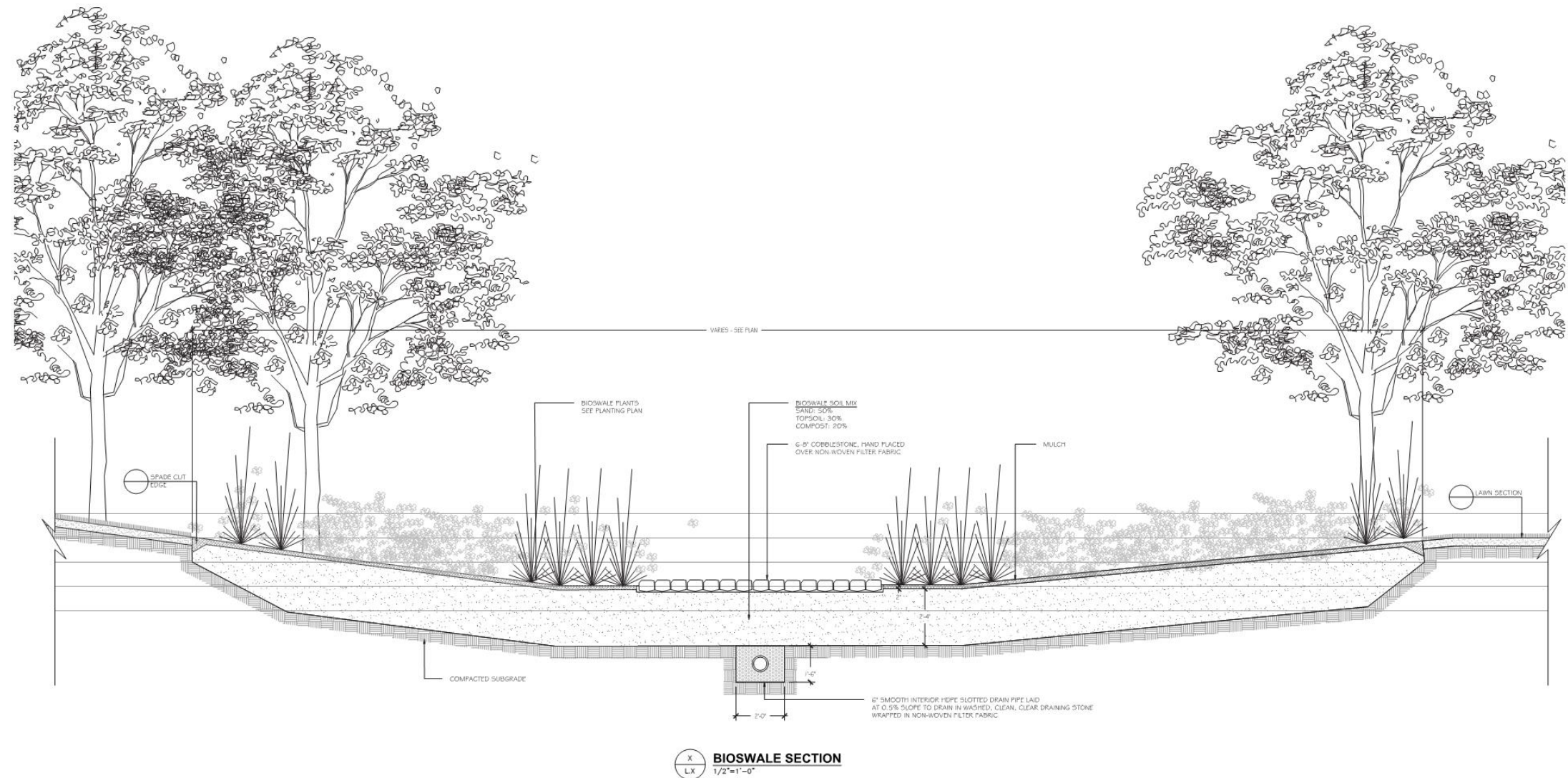
PROJECT NUMBER: FRENCH 2017-041
SD NP17-044
SHEET NUMBER: C1.19

3 WORKING DAYS BEFORE YOU DIG CALL MISS DIG. 1-800-482-7171

New West Bloomfield Middle School

1. Wetland mitigation (1.25 for 1 mitigation plan)

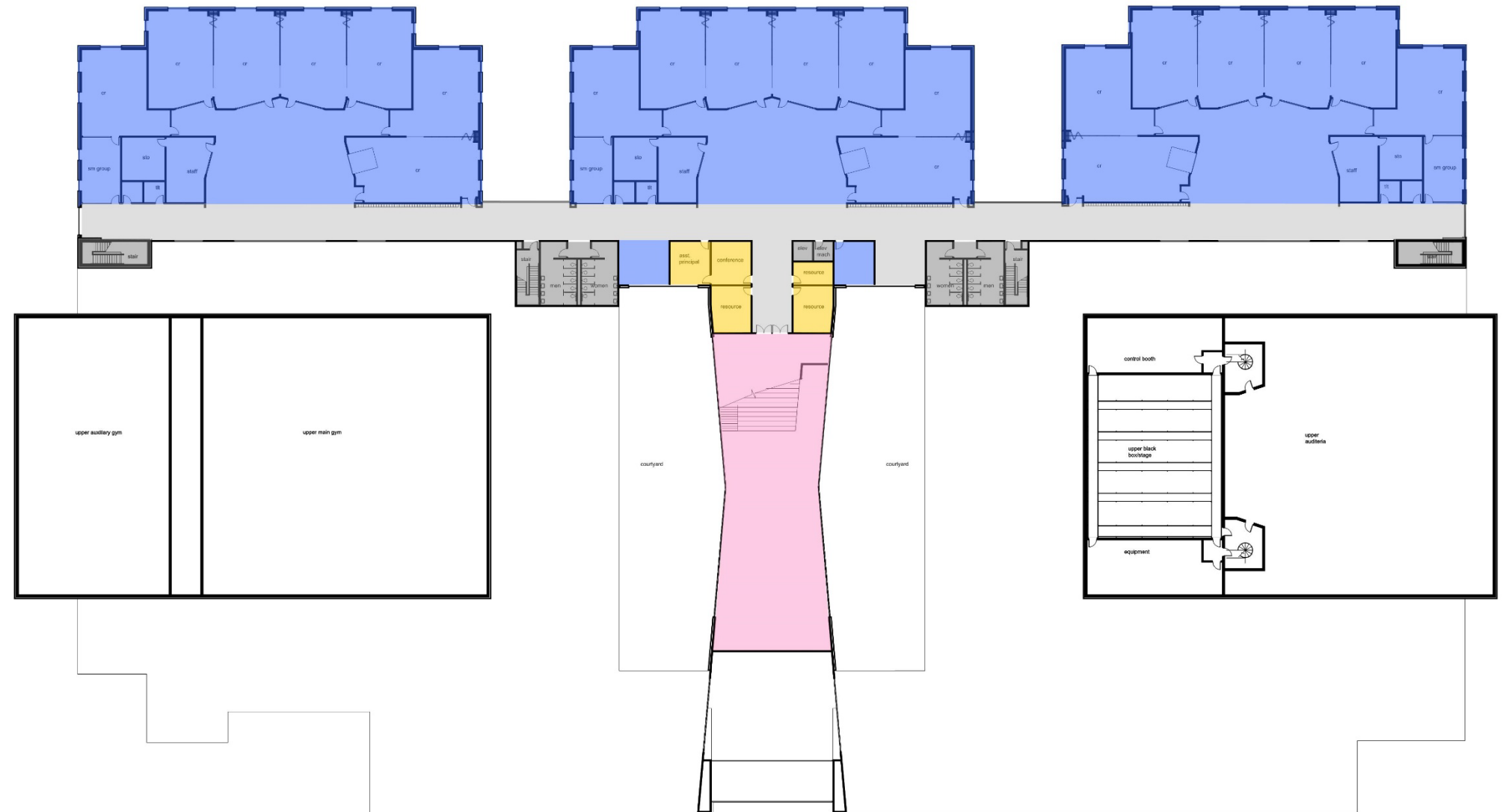
WEST BLOOMFIELD MIDDLE SCHOOL - PRELIMINARY LANDSCAPE DESIGN



New West Bloomfield Middle School – 1st Floor



New West Bloomfield Middle School-2nd Floor



AUCH

