

DEAR CENTERVILLE ELEMENTARY FAMILY,

WELCOME TO THE 2019-2020 SCHOOL YEAR AT CENTERVILLE ELEMENTARY! I AM SO VERY EXCITED TO BE STARTING A NEW JOURNEY AS YOUR PTA PRESIDENT AND TO BE WORKING WITH YOU AND THE BOARD TO BRING SOME AMAZING ACTIVITIES TO OUR CHILDREN. OUR SCHOOL AND YOUR PTA CAN ONLY BE SUCCESSFUL WITH YOUR HELP AND SUPPORT. FIRST, I AM HOPING THAT EVERY PARENT, GRANDPARENT, AND COMMUNITY LEADER WILL CONSIDER PAYING THE \$6 DUES AND BECOMING A MEMBER OF THE CENTERVILLE ELEMENTARY PTA. It TRULY TAKES A VILLAGE TO HELP RAISE OUR CHILDREN, AND WITH INCREASED MEMBERSHIP, WE ARE ABLE TO ADVOCATE FOR MORE FOR OUR SCHOOL AND OUR KIDS. WE ARE ALSO HOPING THAT EVERYONE WILL CONSIDER DONATING TIME AS A VOLUNTEER OR A MONETARY DONATION OF AT LEAST \$40 TO HELP FUND ALL THE ACTIVITIES WE SUPPORT FOR OUR CHILDREN AT CENTERVILLE ELEMENTARY. INSTEAD OF TRYING TO SELL CANDY BARS OR CAR WASHES, WE ARE HOPING THAT IF EVERYONE PITCHES IN, WE CAN HAVE EVERYTHING WE NEED TO MAKE THE 2019-2020 SCHOOL YEAR AMAZING. OUR CHILDREN NEED US TO BE THE SUPERHEROES IN THEIR STORY AND MAKE THEIR EXPERIENCE HERE AT CENTERVILLE AMAZING; SO, REMEMBER THAT NOT ALL SUPERHEROES WEAR CAPES!

THANK YOU!
MICHAEL BRAUN



Reflections Contest

Do you enjoy art, music, and dance or have an interest in writing, producing films and taking photos? Then join us and have fun unleashing your inner artist with PTA Reflections! This year's theme, "Heroes Around Me", calls for your own unique interpretation through the arts. Pick up guidelines and an entry form by the office or at <http://www.utahpta.org/reflections>. Entries must be submitted to the office by October 24th.

Centerville Elementary School

PTA Newsletter

August 2019

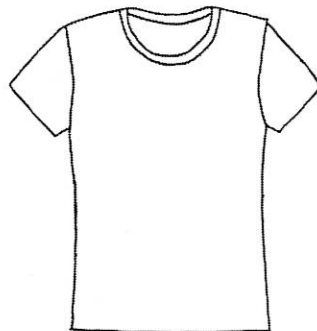


JOIN US!

Ways to become a member of Centerville Elementary PTA:

1. Sign in to your my DSD account. Click on "Payments", then "Optional Fees" and then add "PTA Membership Dues" and/or "PTA Donations" to your cart.
2. Visit and sign-up at the PTA table at any of the school events, anytime throughout the year!

Membership dues are \$6 per membership. We are also requesting PTA Donation of \$40 per family.



PTA T-SHIRTS

Support the School and the PTA
Wear them Proudly!
\$10 each



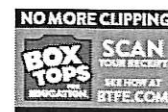
Dear Families,

The Box Tops for Education program is changing the way we can earn cash for our school!

Over the summer, participating brands have begun to change their packaging from the traditional Box Tops clip to the new Box Tops label.



SEE THIS...
CLIP IT



SEE THIS...
SCAN
YOUR RECEIPT

Going forward, instead of clipping from packages and checking expiration dates, all Box Tops will be earned digitally by scanning your receipt. The Box Tops for Education team has worked hard to build a NEW-and-improved, user-friendly Box Tops mobile app, available now.

The new app features state-of-the-art technology that allows you to scan your store receipt, find participating products and instantly add Box Tops to our school's earnings online.

BE SURE TO DOWNLOAD THE NEW APP
OR UPDATE YOUR EXISTING APP:



If you still have traditional Box Tops clips at home, make sure to send them to school. We will still earn cash for all clipped Box Tops until they expire. Better yet, you can "double dip" during the packaging transition by clipping traditional Box Tops AND scanning your store receipt containing participating products.

Thanks for helping our school get what it needs!

LEARN MORE ABOUT THESE CHANGES AT

BTFE.COM