

Spring Branch Independent School District \ \ Houston, Texas \ \ September 4<sup>th</sup>, 2019





### **PAT Meeting #08** (3:15pm to 4:45pm)

- Project Recap
- Architectural Process
- Guiding Principles
- Priorities
- New Auditorium Layout
- New Auditorium Exterior Development
- New Auditorium Interior Development
- PAT Review
- Next Steps
- Meeting Adjourned at 4:45pm

# Project Recap



**PAT 01**

**PAT 02**

**PAT 03**

**PAT 04**

**PAT 05**

**PAT 06**

**PAT 07**

**PAT 08**

**PAT 09**

02-28-2019

03-18-2019

04-03-2019

04-25-2019

05-16-2019

06-27-2019

08-21-2019

09-04-2019

TBD

**KICK-OFF**

**PROG**

**SD**

**SD**

**DD**

**DD**

**DD**

**DD**

**DD**

- Fact Finding Review
- Gather Data
- Establish Guiding Principles

- Floor Plan improvements
- Auditorium plan review
- Site Improvements

- Refine Layout Options
- Acoustical consultant

- Refine Auditorium Layout Options
- Volumetric exterior concepts

- Refine Layout Options
- Review Exterior Design

- Review Overall Design
- June 27<sup>th</sup>

- Auditorium Review (Layout, Exterior and Interior)

- Review Lobby, Clinic, Cafeteria, Locker areas

- Final Overall Review for Auditorium
- Final Overall review for Lobby, Clinic, Cafeteria, Locker Areas
- Review Material and Finishes



## Goal

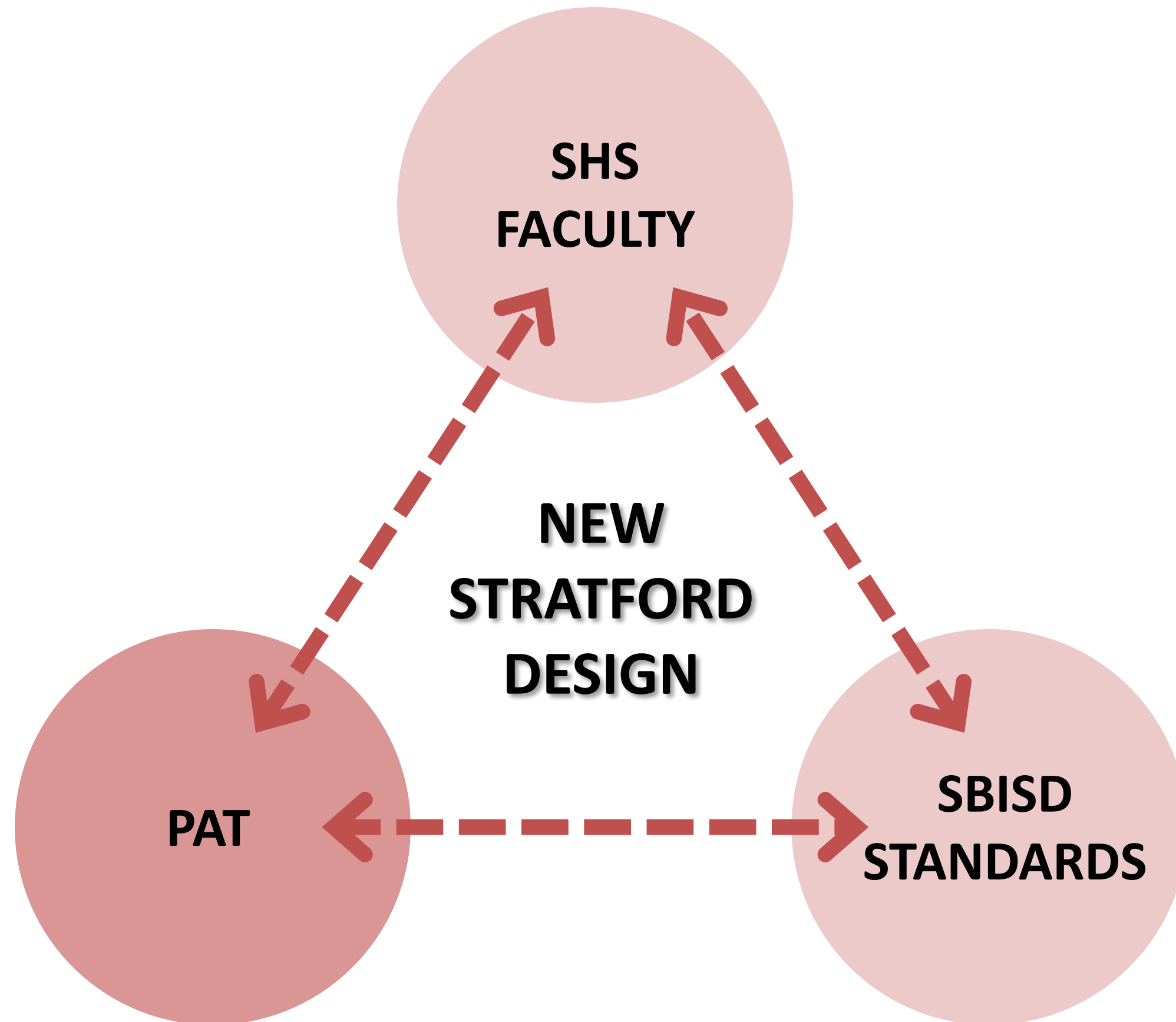
The goal of the PAT is to ensure that parents, staff and community members have the opportunity to take part in the planning and design of new schools. The PAT members will **serve as communicators** to and from the community during the schematic design and development phases of the project and participate in discussions that will lead to recommendations. The PAT concludes its work once construction begins.

## Charge

Each Project Advisory Team's (PAT) members are charged with **providing input into planning and design development** for their school's new construction or major renovation project in the 2017 Bond Program. The PAT will meet as needed throughout the project, from initial planning, through design to the start of construction. Meeting agendas and minutes will be posted on the school's bond project website.

- **New 1,000 seat Auditorium**
- **Mechanical/ HVAC System Upgrades;** for better comfort control in hallways and classrooms
- **Exterior/ Interior Upgrades:**
  - Safety and security (fire alarms, burglar and access control)
  - Meet Education Specifications (replacement of student furniture, evaluate lighting, door hardware, flooring)
  - Exterior power wash, building envelope
- **Site Improvements** (Safety lighting and parking pavement)
- **Roof Systems;** replacement
- **Athletic Upgrades;** (Resurface track, tennis courts, & field refurbishment. Upgrades will be addressed as needed)





- Involved **Community**
- School is a **Community** hub
- No meeting spaces on campus
- Desire **Openness**
- **Way-finding** is not organized
- No **open** look and feel
- Remove lockers
- Balance **true needs** of SHS



### Meeting Minutes

*Project Name: Stratford High School Renovations*  
*Project Number: 18148*  
*Owner: Spring Branch ISD*  
*Meeting Description: SHS - Meeting with Principal #1*

*Meeting Date and Time:*  
*Meeting Location: Stratford HS*  
*Owner's Designated Representative: Kris Drosche*  
*Report Date and Author: 11/15/2018 Max Buja*

1. Representatives from Campus: Principal, Social Studies, Science Representatives, & Foreign Language.
2. Travis outlined bond program and anticipated project scope. Refurbish, renovate, and replace particular items.
3. Replacement parking lot lighting (former solar lighting).
4. Major roof replacement project.
5. New classroom and teacher furniture (by separate project).
6. Turf athletic field (by PBK within project).
7. Athletic improvement budget (set aside for improvements now or in future).
8. New auditorium, possibly in location of existing auditorium or going in similar location.
9. Rusty Hess and SHS Fine Arts Group to be engaged about design process.
10. Design parameter for considerations: Detention, Displaced Parking.
11. Involved community – parent involvement is high.
12. Stratford Playhouse is popular and successful component.
13. Music and Fine Arts programs are popular.
14. Students ride bus to Guthrie.
15. Safety & Security there needs to be a way to work hand in hand with a very active campus.
16. The "back" of the school is the "front" and most activity (kid traffic) comes from back parking lots.
17. Front is for visitors.
18. School is a community hub. Constant activities on campus.
19. No meeting spaces on campus; one small conference room (10 people), the auditorium, and the library (the only in-between space). Mid-sized groups 15-20 people will need to go to library. This type of space would be desired by campus for LGI flexible usage.
20. Library gets "shut down" from students commonly for group meetings, testing, etc.
21. Idea suggested to convert auditorium to LGI and constructing auditorium in alternate location on site.
22. Desire to incorporate LGI space and flexible use.
23. SHS has a bit of an identity crisis being all "hallways and closed doors".
24. Pulse of community and campus is collaboration, small groups, clubs, and learning mentality.
25. Desire openness and flexible learning and community spaces.
26. Look at entry and entry identification in back where students/campus enter.
27. Less lockers or no lockers is desired. 50-75 total lockers currently utilized.
28. SHS has many teachers that float which is a burden on entire campus.
29. Close off entire library? Large group areas inside library?
30. SBAI, Spring Branch Academic Institute will need to be defined and PBK educated about this program.
31. Athletic facilities in dire need of renovations.
32. Both gyms and courts are in poor shape as are locker rooms.



1 | Page



flooring needs to be looked at and was noted to be in poor condition.  
select hallways – look at versus usable SF and environment.  
; not organized and ideal; would appreciate new signage.  
inance, Academy of Science and Engineering.  
if a "Club" important to potential and current students attending.  
Math are not adjacent to one another – look at program and layout of existing  
lubs are numerous and well participated in; however a clear lack of storage on  
; against community feel – departments are all "isolated" and rarely interact.  
and feel – too many interior hallways.  
is to create openness to improve benefit "look and feel" doors facing common areas  
; not others (such as social studies).  
ys and hall entries/doors to be more flexible.  
rovide multiple small flex areas and collaboration points with small groups, tables.  
roblems are prevalent. Electrical has gone down to half of school multiple times  
in gym have gone out multiple times.  
sroom conditions vary greatly.  
g with T&B should be reviewed.  
phy (related to art) journalism and business – Guthrie Center handles large  
h as cosmetology.  
ot organized ideally.  
'If you could make a change at SHS what would it be?'  
ition corridors and remove lockers to free up usable space.  
e enlarged meeting area on site for use by various groups/sizes. Move voting  
r? Signify prominence.  
se positive reasons to visit SHS reaching lower socio-economic constituency (with  
es, programs, group exercises, language, etc).  
al collaborative spaces for students to harbor ownership and responsibility.  
icing true needs of SHS in all areas of school vs excessively equipped auditorium.  
ure to be appropriate for collaboration, reconfiguration.  
ice security improvements interior and exterior to be effective and thoughtful to work  
w/campus.

t up with same group and potentially additional individuals.



2 | Page



- **Playhouse** season ticket holders
- **Auditorium** is central to campus
- Need an **LGI**
- Need **offices** and **storage**
- Floating teachers
- **Secure** main lobby
- Feels too **institutional**
- Create **Counselor** suite



### Meeting Minutes

<i>Project Name:</i> Stratford High School Renovations	<i>Meeting Date and Time:</i>
<i>Project Number:</i> 18148	<i>Meeting Location:</i> Stratford HS
<i>Owner:</i> Spring Branch ISD	<i>Owner's Designated Representative:</i> Kris Drasche
<i>Meeting Description:</i> SHS - Meeting with Principal #2	<i>Report Date and Author:</i> 1/22/2019 Max Buja



### Stratford HS Campus Review

1. Introductions
2. Travis, Kris – P&C
3. Chad, Principal
4. D. White, Counselor
5. Pam, Assoc. Principal
6. Lynne, Director SB Institute
7. Valerie, 9<sup>th</sup> Gr Principal
8. David, Director Tech Theater
9. Kristi Schaper, CTE Teacher
10. William Hall, Math & Engineering
11. Shelby, Librarian
12. Project Scope-Roof, Turf Field, Auditorium, Major Renovations & Interiors work.
13. Classroom Furniture (Future Separate Project).
14. Current 750 seat auditorium. Request and need to keep current auditorium seating during construction.
15. 500 participants in current programs.
16. Previous events there have had folding chairs brought inside the space to allow for additional seating.
17. Plays are "extra-curricular" because of other programs that students participate in.
18. Heavy participation from community.
19. Theater, Orchestra
20. Several hundred season ticket holders.
21. Gala fundraiser this week for Theater Booster Club (multiple enormous events) compete against varsity football events.
22. Auditorium is central to campus use and highly used.
23. UIL hosted events – every UIL events for one act plays and large events.
24. No current multipurpose space at SHS. Use auditorium, library, or dining space therefore auditorium is commonly occupied.
25. Parent meetings that coincide with production, rehearsals, or other events. The set is there and this results in limited usable space within auditorium.
26. Medium sized space ideally would house 100-150 people (multi-use space).



1 | Page

11000 KWAY PLAZA #2200 HOUSTON, TEXAS 77060 • 832-905-2600

ce of CTE but has been asked to leave – he has been moving around  
nd the Ag Center. ROTC, Culinary, Film, Cosmetology, Film Making,  
antage of all at Guthrie Center.  
for engineering dept.  
d requires replacement of select equipment.  
ve loop was added in previous renovation and while small made a

as – ramp is on the East side only 7 buses used limited bus for main  
buses throughout the day for other programs will use the front  
rop off on Fern Drive.  
ed except front door (as of last year) so front is active and students  
sd to walk around building to front door.  
problematic – no temporary classrooms except for 3<sup>rd</sup> rubber gym  
al needs. To get to rubber gym you have to go outside then back  
hat line to protect pedestrians from main building out to the 3<sup>rd</sup>  
unlocked. Canopy would be wanted/helpful. All PE classes are  
PE students are affected.  
th a gap in between (one class)  
rpose room, frequently used, commonly shut down. Technology  
eacher luncheons, students eat.  
library varying use but up to almost 100. Fire Marshal limit at 72.  
testing, and regular testing.  
as 3 classrooms and a small work based utility area. Pretty old and

or severe autistic only at select campuses throughout district.  
ed,  
1, of varied age, and poorly supports student useage and function.  
osed off with many doors and hallways constricting spaces.  
hout campus to help wayfinding, campus pride, organization.  
s to make the school less institutional  
tc. scattered throughout building.  
r, 90 degree turns can we "SOFTEN" the campus?  
it SHS:  
ited / LGI for larger group  
pace, & Storage Added

id Intimate Auditorium Integrated in Campus (Not on an Island)  
g Auditorium – capture smaller targets and needs throughout

- Better clearly identify where you enter Stratford. Large auditorium with 3 larger group spaces.
- Need added storage. Get rid of or use multiple balconies.
- Classrooms and LGI added.



3 | Page

11000 KWAY PLAZA #2200 HOUSTON, TEXAS 77060 • 832-905-2600



On behalf of the entire **PRK** Team, we thank you for this opportunity!  
 "Committed to Learning. Working Together. Enriching Lives." - SHS



### Stratford High School Additions and Renovations

#### Rating of the Fact-Finding Items

- A Heavy Community involvement
- A School is a community "hub", constant activity on campus
- A Auditorium central to campus, highly used
- A Performing arts program very popular, equal to football
- B Several hundred season ticket holders for the Playhouse
- B UIL hosted events in the Auditorium
- A Front entry lacks presence towards street
- A Back entry is heavy used (students), front only visitors/ parents
- A Balance security with campus openness and student flow
- A School doors locked all day
- A No secure vestibule
- A 3rd gym/ training room exterior access only
- B School lacks clear way-finding
- Define school academies - not in this scope
- B Parents and visitors "lost" in campus
- A STORAGE FOR SPORTS (STUDENTS EQUIPMENT) ON MAIN FLOOR (E.G. GOLF CLUBS) - THEY HAVE TO USE THEM AT THE END OF THE SCHOOL DAY.
- A Accessible to all (auditorium / cafeteria etc)
- B Better parking out in the front of the building. There is never open parking for parents for pick up.
- A/C Enter around parking areas (Tr / Sr lots)?
- B Staircases - some open / some closed.  
 ↳ better staircase in the cafeteria area - would look & function so much better

- B School lacks gathering areas
- A Incorporate large and medium instructional areas
- B Desire openness and interconnectedness across campus
- A Provide flexible and collaborative areas
- A Create spaces that harbor ownership and responsibility
- B Provide flexible furniture to enhance collaboration
- A Lack storage across campus (see below) → perhaps join storage / make a new space with the third gym (make it secure)
- A Need additional admin offices
- A Create counselor suite
- A Remove lockers, underutilized (50 to 75 units used) → use to create classrooms
- A 8 teachers are currently "floating"
- C SBAI (Spring Branch Academic Institute) specific needs
- A Several HVAC issues across the campus
- A Technology upgrades needed across campus

#### Additional Comments

A Technology & electrical etc

go together

perhaps join storage / make a new space with the third gym (make it secure)

A "if" they could "go anywhere" comment  
 IF SBAI does not utilize the SPS staff why do they not use the space @ SPS? There is space (or was) at that campus & then the students are with their age peers & bus costs. Just curious...

#### Priority Legend

On the left of each Fact-Finding statement, please rate from A to B (A being the highest priority and C being the lowest priority)

- A = High Priority
- B = Medium Priority
- C = Low Priority

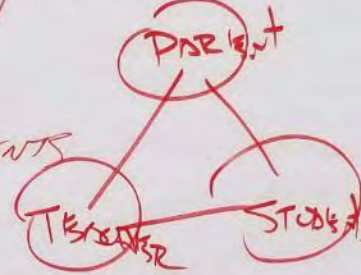


11 Greenway Plaza  
 22nd Floor  
 Houston, Texas 77046

800.938.7272  
 PRK.com

WHAT MAKES SHS<sup>SI</sup> STRATFORD?

- COMMUNITY / FAMILY  
 "BLOOD RUNS GREEN"
- SUPPORT  
 TEACHERS / STAFF / PARENTS  
 COMMUNITY
- SMALL TOWN IDENTITY  
 ALUMNI GROWTH / PRESENCE  
 \* WELCOMING BACK
- FAMILY TIES THROUGHOUT SBISD
- APPROACH: LONG TERM, LONG LASTING
- GOING TO HAVE LUNCH NEXT YR → SPACE





\* <sup>STRAT</sup> CAREFUL w/ UTILIZATION OF CIRC.  
SPACES - HEAVILY TRAFFICKED STUDENTS,  
NOT A "ROOM" BUT GRAPHICS/FLEXIBILITY?

\* GET CONDITIONED AIR INTO CIRC.  
SPACE CURRENTLY NOT

\* LIBRARY SPACE CAN BE RE-PROGRAMMED  
OR MORE EFFICIENTLY USED AS FLEX  
& COLLABORATION SPACE - MORE COST EFFECTIVE?

\* SNACK BAR NOT UTILIZED - STORAGE  
NOW - CAN BE RECAPTURED.

\* LAYERED SAFETY  
CAMPUS WIDE - INSIDE & OUT

\* REVISE/REMOVE/LESS EMPHASIS  
ON "SPECIAL FOCUS ON FINE ARTS"  
(GUIDING PRINCIPLE)

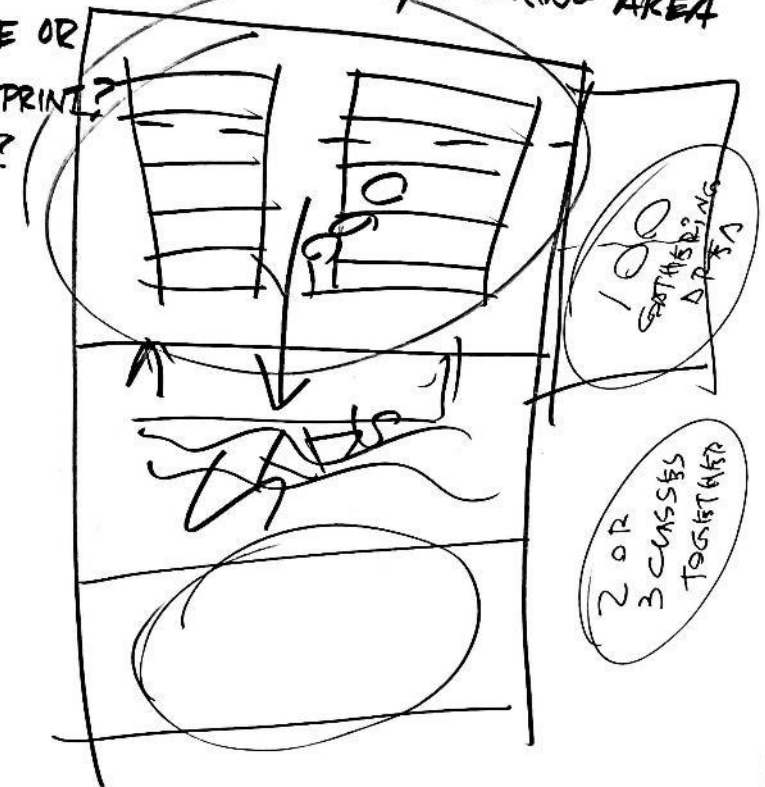
\* SEPARATE ACADEMIES FROM "WAY-FINDING"  
SIGNAGE VS SPACES & COLLABORATION

\* ATHLETIC IMPROVEMENTS IDENTIFIED

\* IDENTIFY BOND SCOPE PREREQUISITES  
w/ PRIORITY SUMMARY

\* AUDITORIUM REPLACEMENT VS 2ND "NEW"  
BUILDING SET IN STONE? BOND ITEM

\* LOOK AT SECONDARY SMALL LGI/GATHERING AREA  
w/ SAME OR  
SIM. FOOTPRINT?  
OCC. ± 100?



### STRATFORD PAT 3

- VESTIBULE SEEMS VERY SMALL
- VESTIBULE IS STUDENT GATHERING AREA.
- IF WE ARE MAKING SECURE VEST... CAN WE REMOVE BACK WALL? RE: 10/17
- PEOPLE GO STRAIGHT TO ATTENDANCE & CLINIC INSTEAD OF VISITORS TAG.
- ENCLOSED ONTO EXTERIOR TO GAIN VESTIBULE SPACE?
- RESTROOMS IN ADMIN. AREA ARE USED BY EVERYONE. MAKE THEM GENDER NEUTRAL.
- MAIL ROOM IN ADMIN AREA CAN GO ON 2ND FLOOR

- RECEPTION MORE OPEN? \*FRISCO
- CAN WE JUMP FENCE?
- CAN RAMP BE INTEGRATED ON STAIRS?
- 1 HR LUNCH
- 1 TO 1 DEVICES
- CAFETERIA USED FOR END OF YEAR BANQUETS.
- PRESENTATION AREA IN STUDENT COMMONS.
- OPERABLE PARTITIONS? RE: JARED SKETCH
- CAFETERIA... IS GATHERING SPACE. ~~FAREPT NOT TO SEE~~
- ORCHESTRA PIT IN AUDITORIUM
- PIT VS STEP DOWN...
- STUDY VIEWS

~~OTHER~~ TICKET BOX LOCATION  
OF A LOT OF ELDERLY



PAT #4 SHS

- ACCESS + ENTRY <sup>QTY & PRIMARY</sup> <sup>OFF OF</sup> DARTYASH.  
CONSIDER FERN IMPORTANCE - (LESS PARKING)
- ACCESSIBLE ENTRY FROM W- LOT  
& AT FRONT ELEVATION?
- KEEP MAIN BLDG. ENTRY IMPORTANCE
- LOOK AT WIDENING/WIDEN OF DRIVE  
ENTRY OFF FERN TO PARKING LOT
- LOOK AT "OPEN SPACE" BTW AUDIT./SCHOOL
- ORCH. PIT BEING REVIEWED, DATA  
GATHERED TO BRING TO SR. STAFF
- SECURE SERVICE YARD USED BY STUDENTS

- DESIRE COVERED AREA AT SERVICE YARD  
FOR STUDENT + PROJECT USE
- FACULTY ENTRY FROM PARKING LOTS  
CURRENTLY HAVE DOOR FOB
- HVAC/CATWALK/MEZZANINE VOLUME
- EXISTING COL. OF TREES DESIRED TO REMAIN
- OVERALL CONCEPT GREAT - BE  
AWARE OF "OPEN COURTYARD" CREATED COULD  
BE BETTER UTILIZED.
- WELCOMING DARTYASH. FACADE & FEEL.
- DETENTION OPTIONS FOR IMPERVIOUS SURFACES?
- MERGE + BLEND NEW ADDITION w/ EXISTING
- LARGE FACADE FACING D. ASHFORD MATERIALS TIE TO EXIST.

- ADVERTISE/HIGHLIGHT THRU GRAPHICS  
w/ PRIDE AND TASTE ON LARGE WALL
- SIMPLE & ELEGANT → FROSTWOOD STONE  
ELEVATIONS, CONTEXT, MATERIALS.
- LOOK AT MATERIALS & EXIST BLDG TO CONSIDER WORKING  
"BACKWARDS" TO TIE TO STRATFORD BLDG/MATERIALS/FEEL

A	Priorities	B	C
Campus Security		"Floating" teachers	Fix stairs and elevator
Auditorium		lack of storage	Way finding
HVAC		renovate lockers	Addit'l Admin offices
Gathering areas		Counselor suite	SABI

Exterior

Plaza - open  
open feel  
lights adding to open feel  
brightness  
seeing in - transparency  
curve shape  
tie-in to existing building  
glass  
community  
warm feeling  
welcoming

Interior

comfortable seats  
pang wall  
wood  
warm  
professional  
wood tones  
seating on 3 sides - thrust style  
rich colors  
deep  
uplighting on walls  
focus on stage  
curve elements  
intimate and open  
high ceiling  
lights



A	B	C	D
2	11	1	0

Massing

Columns for option B  
brick all the way up  
reduce depth of blades  
materials of canopy and columns

logo in A  
wall in B more connected to existing  
name and no name options on wall

2	12	0
---	----	---

like openness of front



PAT #07 SHS

- ° SCHOOL LOBBY
  - RAMP / DOOR ENTRY
- ° CONTROL BOOTH
  - ° ENCLOSE
  - ° SMALL AUDIO MIX
- ° STAGE DEPTH
- ° DRILL TEAM STAGE
  - ° SIZE
- ° ORCHESTRA
  - SCENE SHOP
  - BEHIND THE SCENE NOW
  - WITH MONITORS, CAT5 CABLE
- ° MAKE-UP ROOM
  - DBL DOORS

- TICKET/CONCESSION WINDOWS
- BUSY - HEAVY TRAFFIC
  - COVERING ON WEST SIDE FOR TICKETING
  - SECURITY FOR PEOPLE COMING IN @ EVENING
  - GREET ROOM

### EXTERIOR

- PLAZA - SELL BRICKS (USED EXISTING?)

### INTERIOR

- SHOWCASE <sup>VISUAL</sup> ART
- PICTURES
- SELLS OF OTHER THINGS

- MULTI-USE OF STAGE
  - ° PRESENTATIONS, CEREMONY ETC.

### OPTION A

- DARK RED - RICHER
- LIKE WALLS (MOVEMENT)
- DARK CLG - LOVE • VERTICAL LIGHTS
- OPULENT / IMPRESSIVE ON SIDE WALL
- DARK STAGE

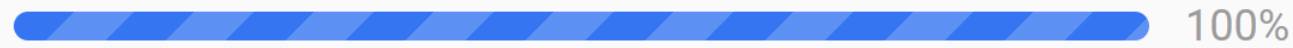
### OPTION C

- DIFFERENT ELEMENTS
- DISLIKE BRICK

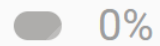
Are we going in the right direction on the Auditorium Lobby?

017

Yes



No



Do you agree with the overall design (layout, exterior and interior) for the new Stratford Auditorium and support spaces?

009

Yes



No



What is the preferred option for the Auditorium interior?

016

A



B



C



Are we going in the right direction for the Stratford High School Additions & Renovations Design after PAT 07?

008

Yes



No

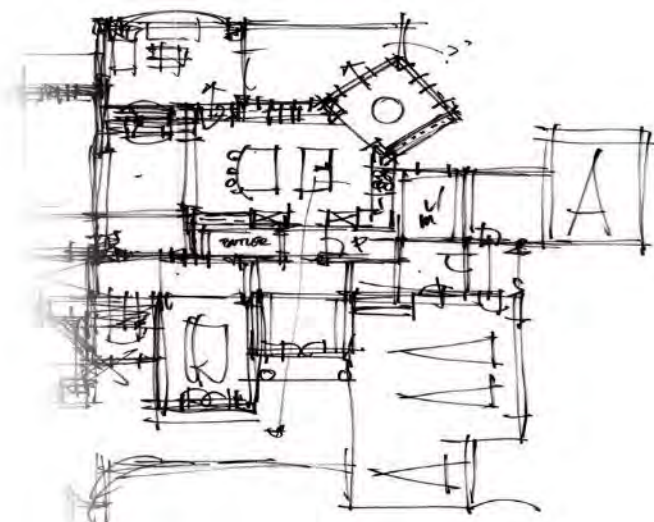
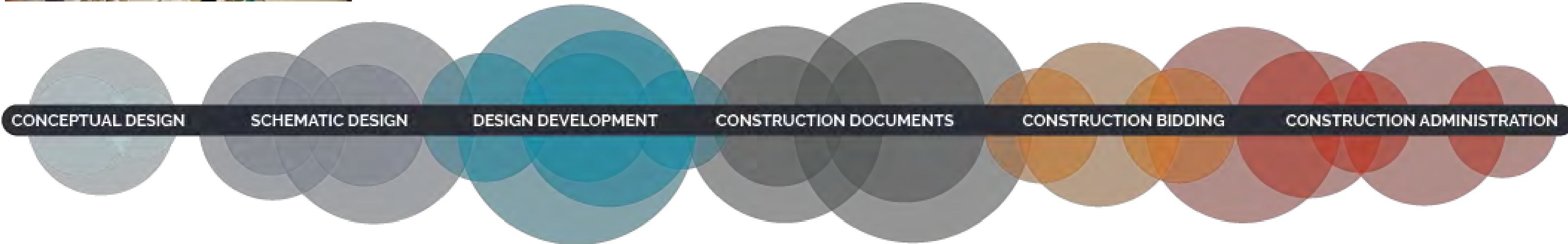
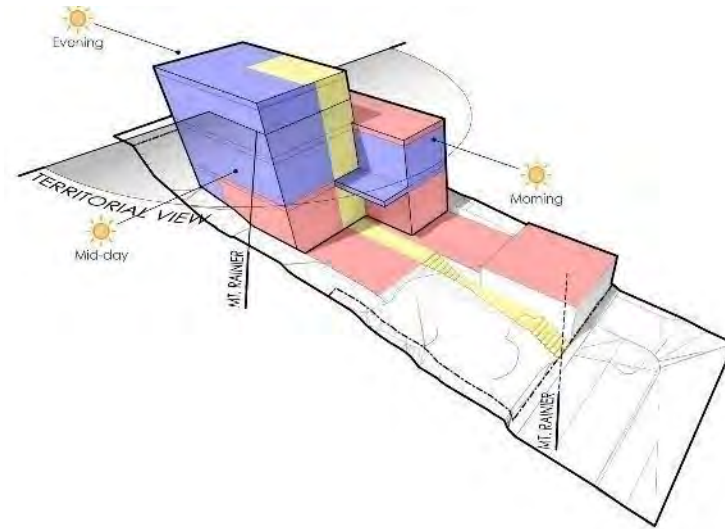








# Architectural Process





# Guiding Principles





### **Community Involvement for Success**

Neighborhood Institution that offers opportunities to all and hosts a wide arrange of community engagements.

### **An Environment of Academic Excellence**

Uphold and evolve higher educational performance through the introduction of versatile and flexible gathering areas.

### **A Place for Everyone**

Create an environment that celebrates everyone and provides accessibility to all.

### **Safety Fosters Success**

A secure campus that fosters an environment where students, teachers and staff can succeed.

### **A Culture of Tradition and Pride**

Maintain the traditions that provide a sense of pride and honor to the school and community.

# Priorities



## Priority A

- **Campus Security**
- **HVAC/ Tech Campus Enhancement**
- **Gathering Areas, Openness and Interconnectedness**
- **New Auditorium/ Community “Hub”**

## Priority B

- **Remove Lockers**
- **“Floating” Teachers Issues**
- **Lack of Storage**
- **Counselor Suite**

## Priority C

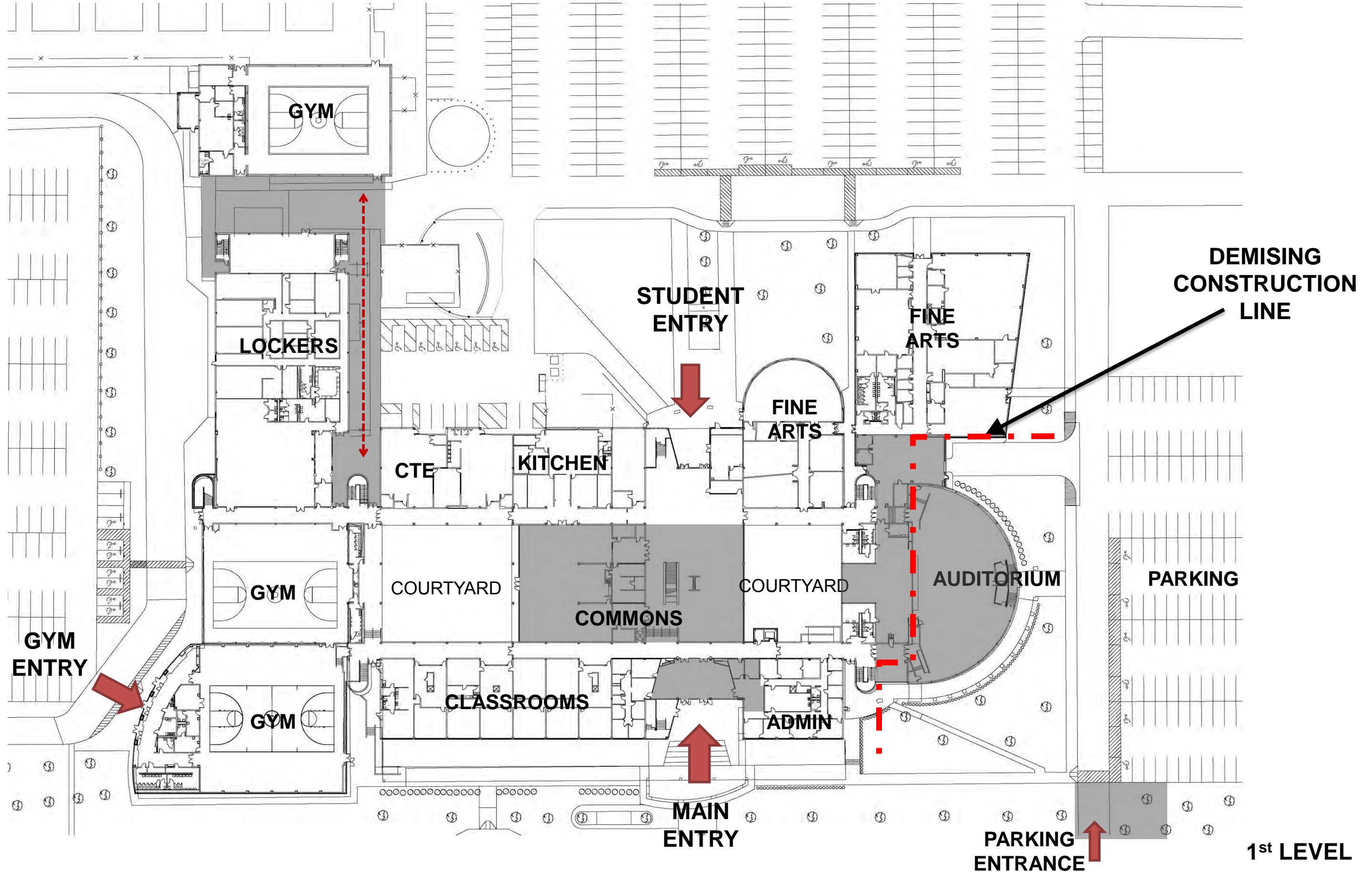
- **Additional Admin Offices**
- **Way-finding/ Academies**
- **Fix Stairs and Elevator**
- **SBAI needs**

# Overall Campus



# Stratford High School Additions and Renovations

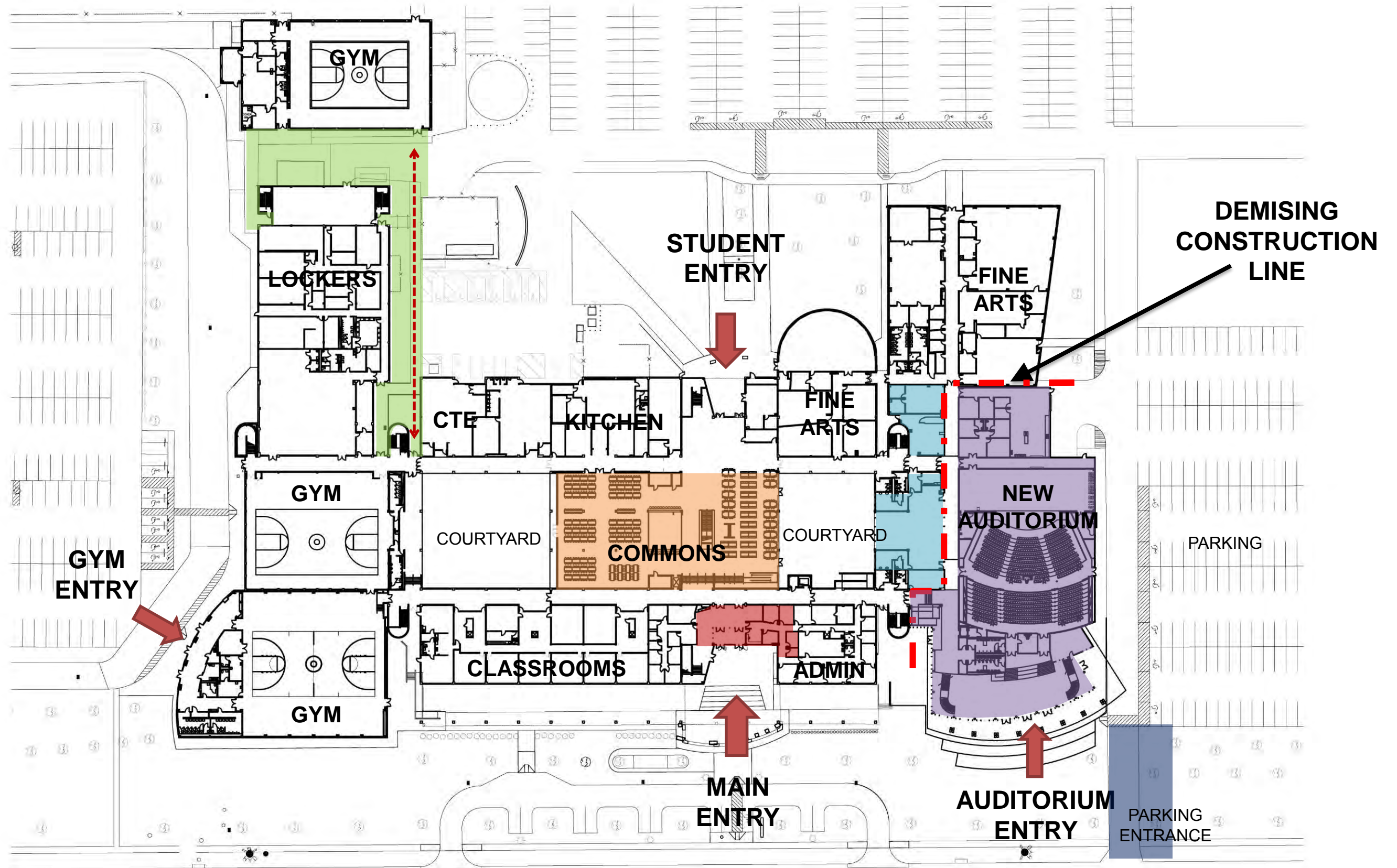
## Existing 1<sup>st</sup> Level Floor Plan





# Stratford High School Additions and Renovations

## Proposed 1<sup>st</sup> Level Floor Plan Layout

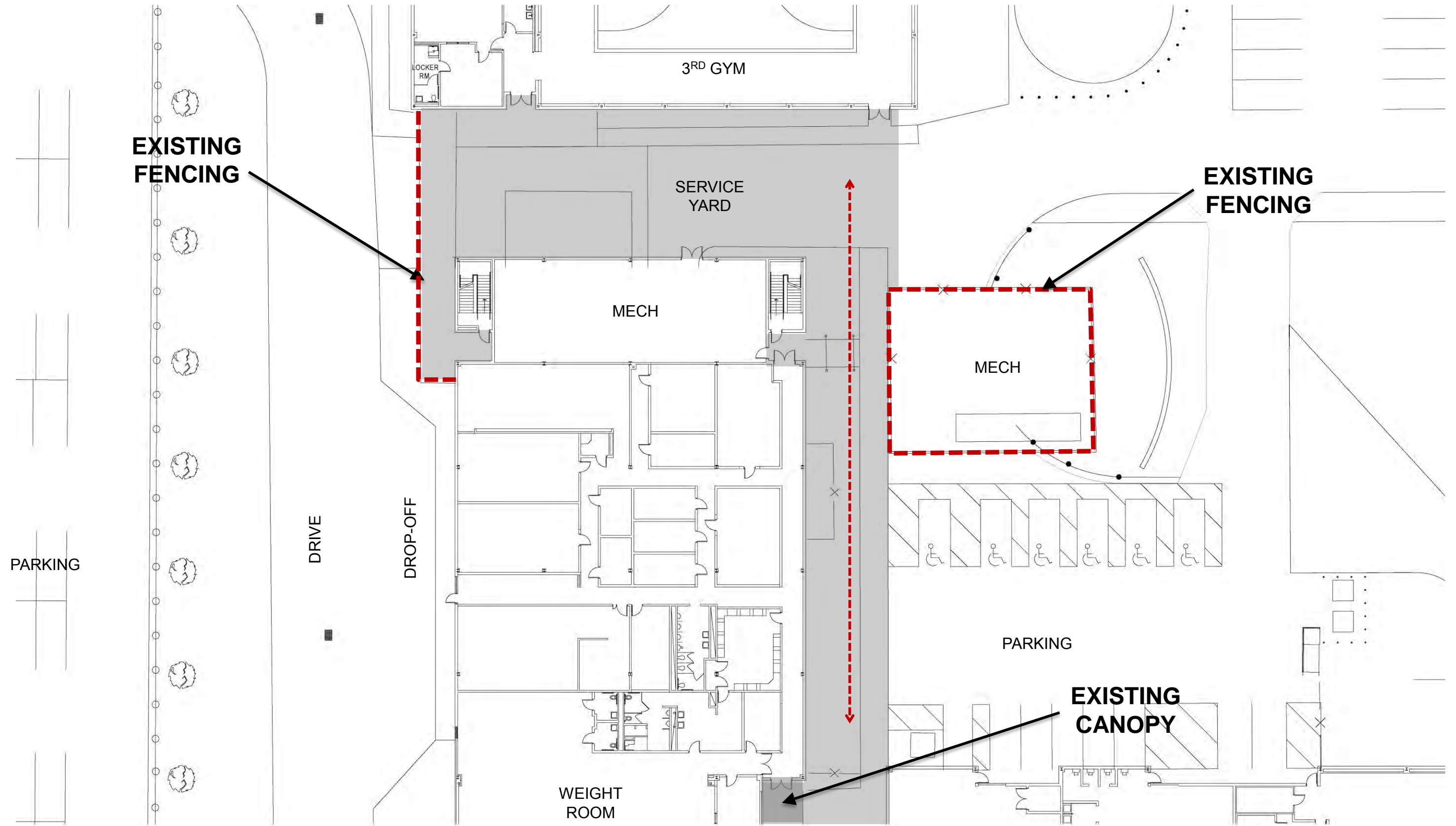




# Gym Secure Access

# Stratford High School Additions and Renovations

## Existing 3<sup>rd</sup> Gym Area





# Stratford High School Additions and Renovations

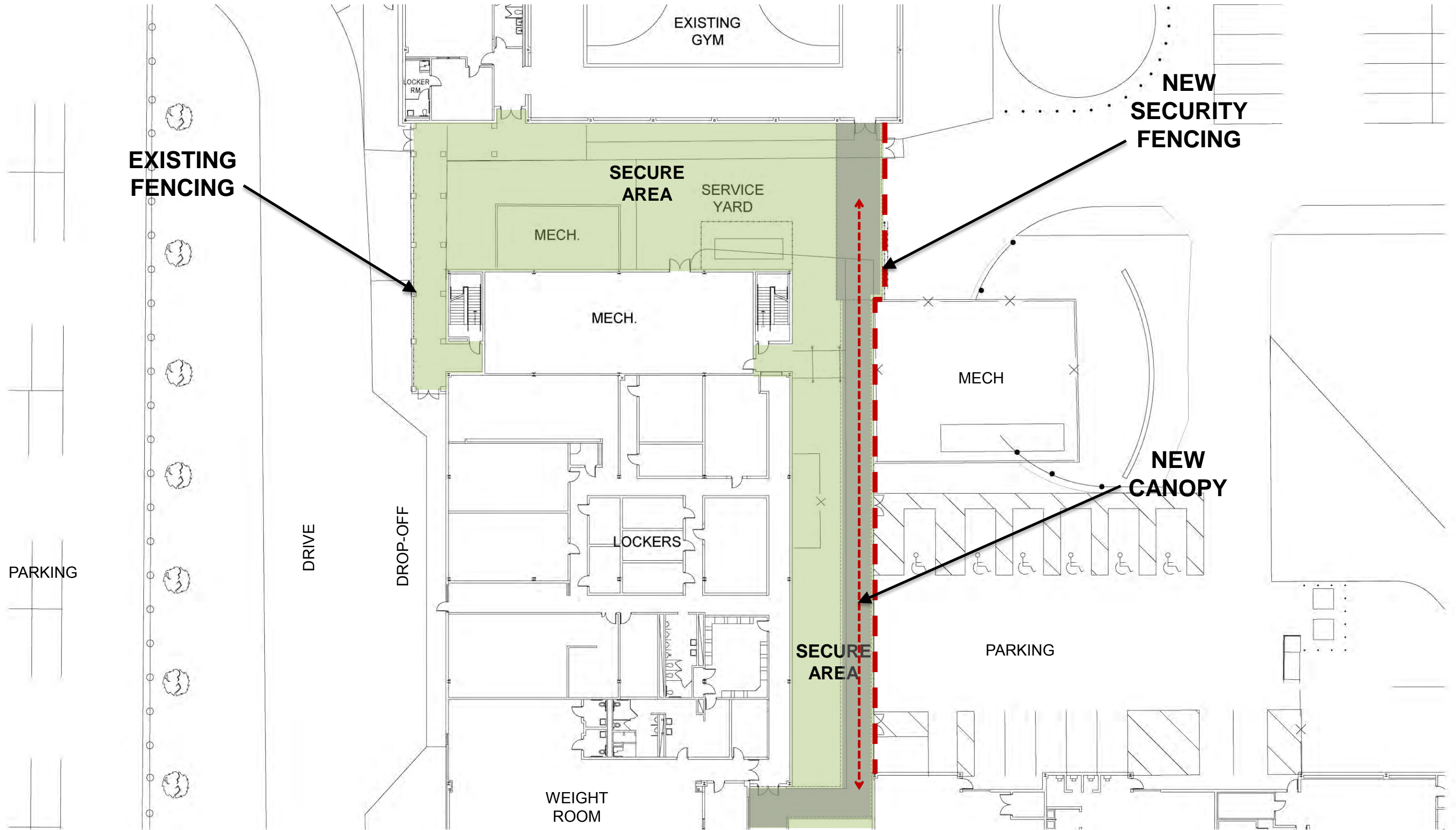
## 3<sup>rd</sup> Gym Secure Area - Photos





# Stratford High School Additions and Renovations

## Proposed Floor Plan Layout – 3<sup>rd</sup> Gym Secure Area

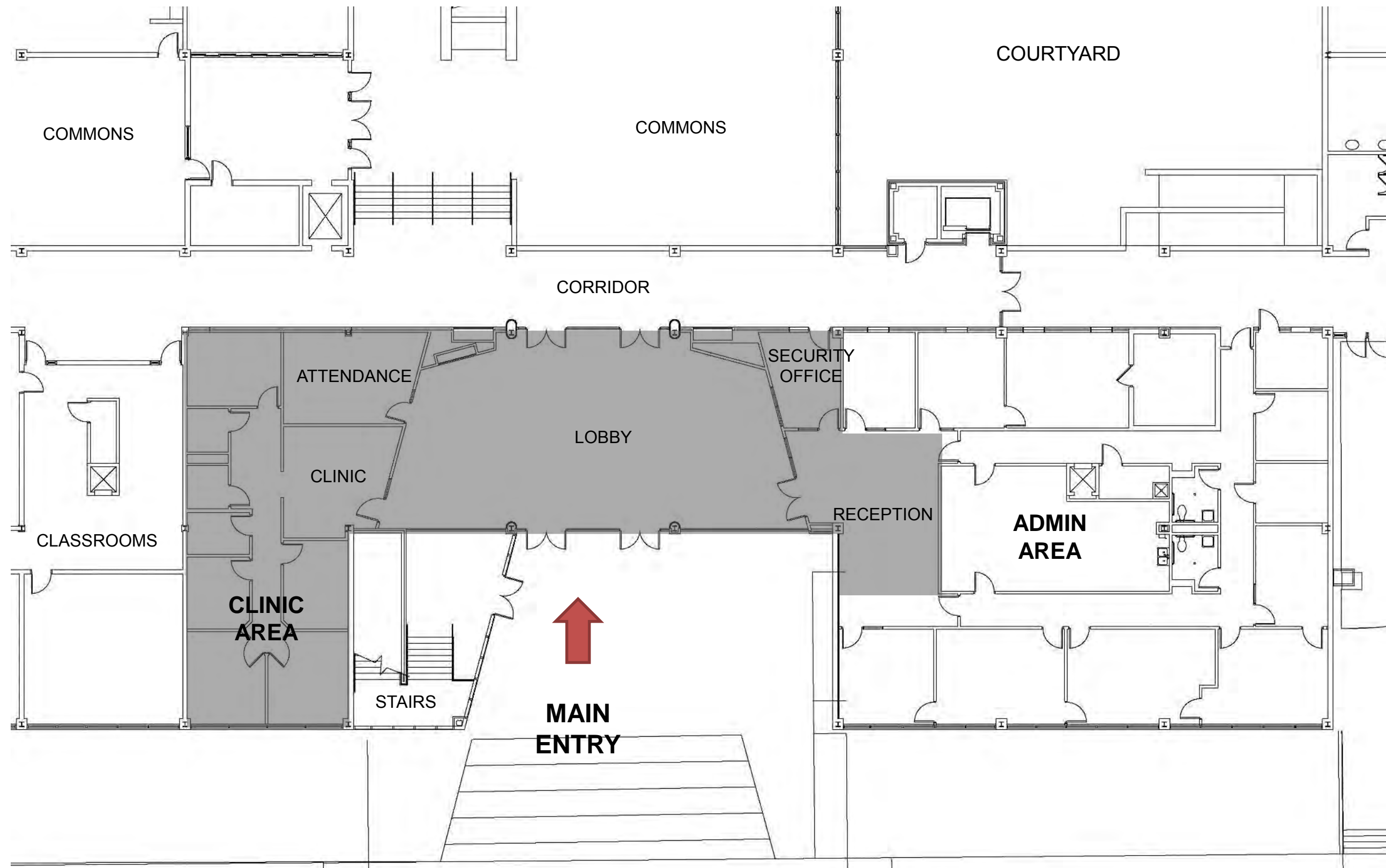


# Main Entry Area



# Stratford High School Additions and Renovations

## Existing Main Entry











Spring Branch ISD



Fort Bend ISD

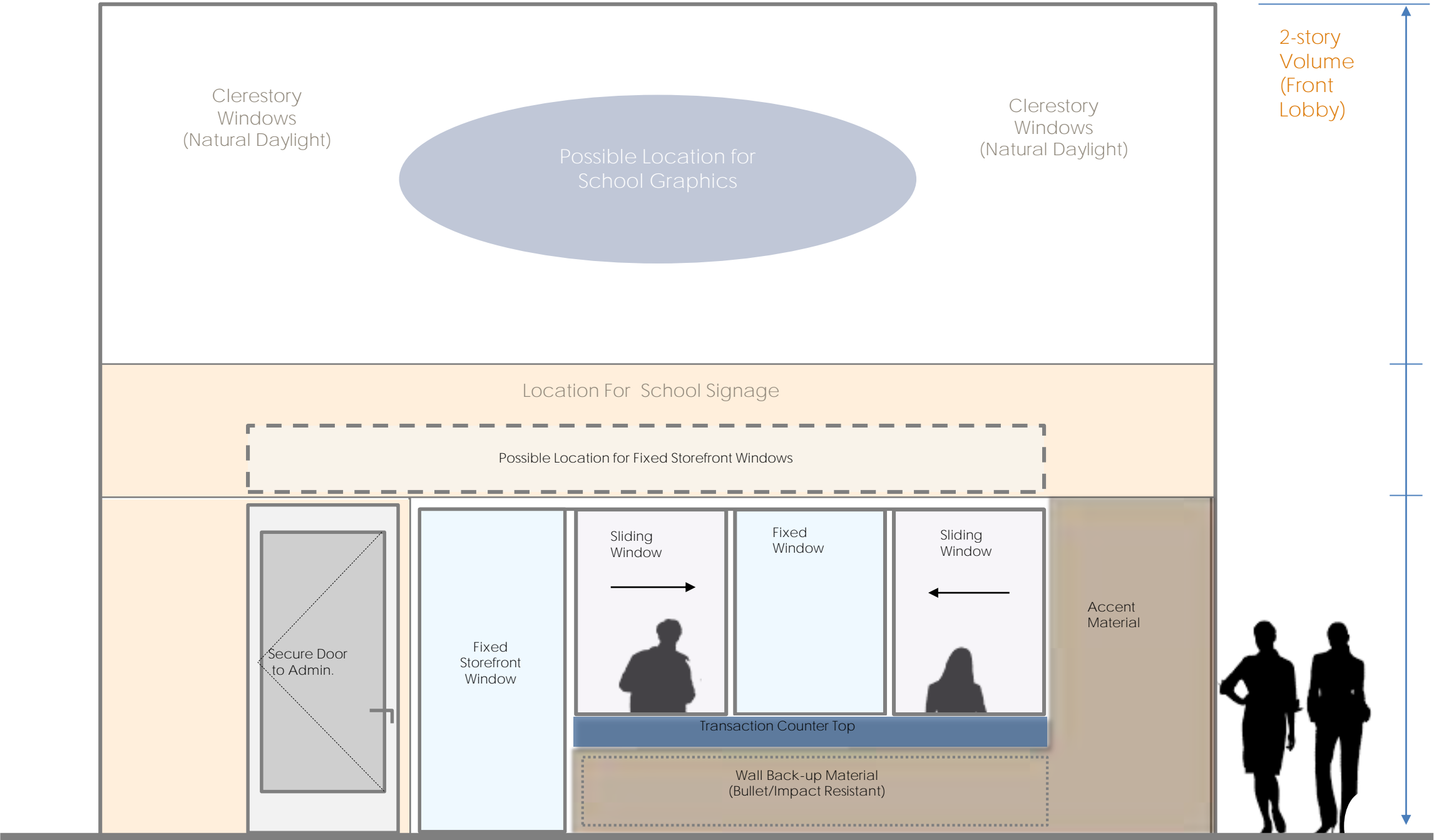


### Visitor Sign-in at Reception Desk

- Sliding Window at Transaction Counter  
3 Glass Panes at Counter  
2 Sliding Panes + 1 Fixed Panel
- Wall w/ Transaction Window  
≥ 60% Transparency  
Interior Finish Materials, Varies
- Design Expression = Campus Response  
Site / Building Layout  
Campus Community Context

### Window / Glazing Protection

- Security Film (Impact Resistant)  
SBISD Direction in July 2018



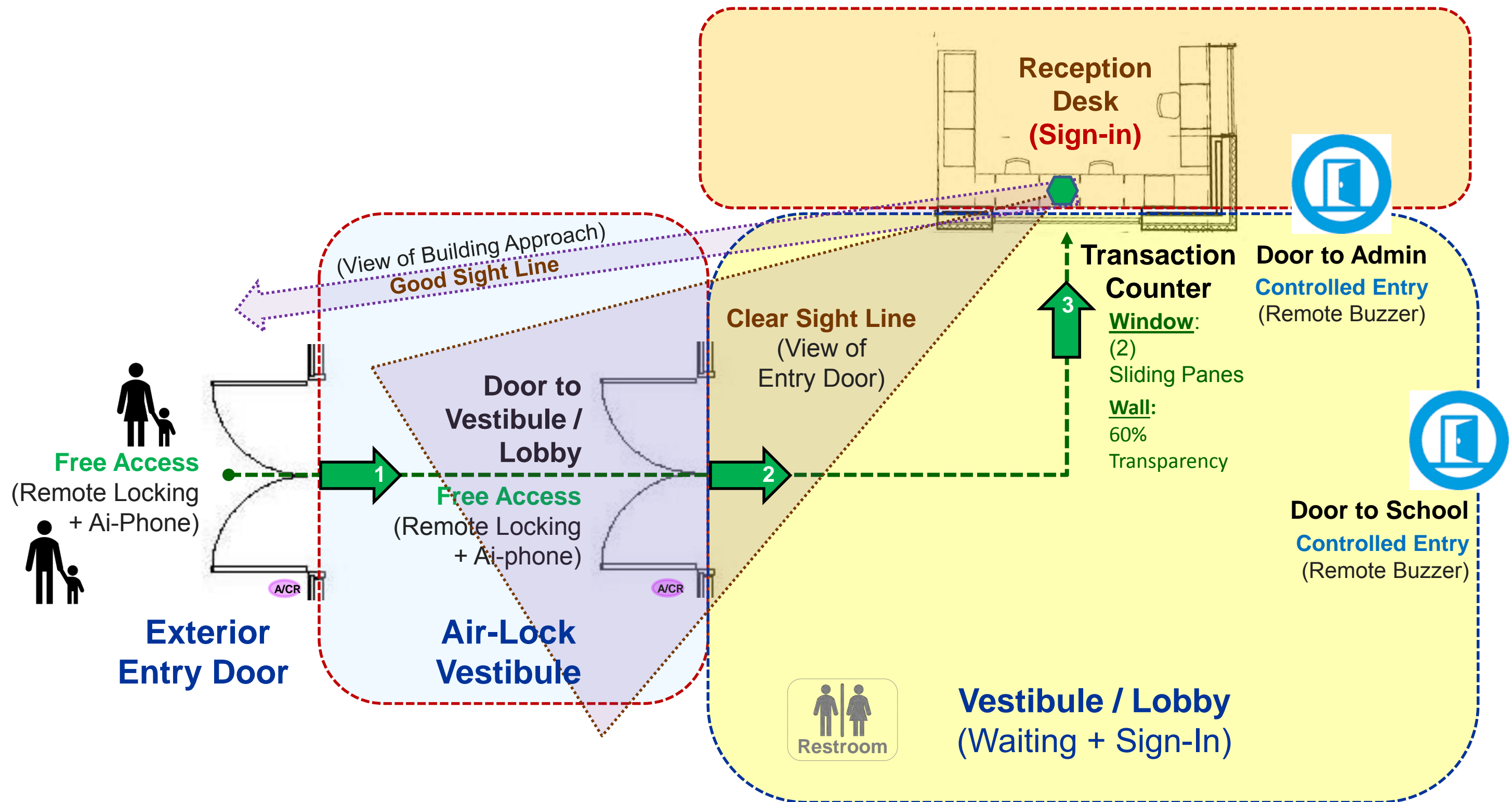
**Elevation for Reception Wall at Front Lobby**

Minimum 60% Glass / Transparency area



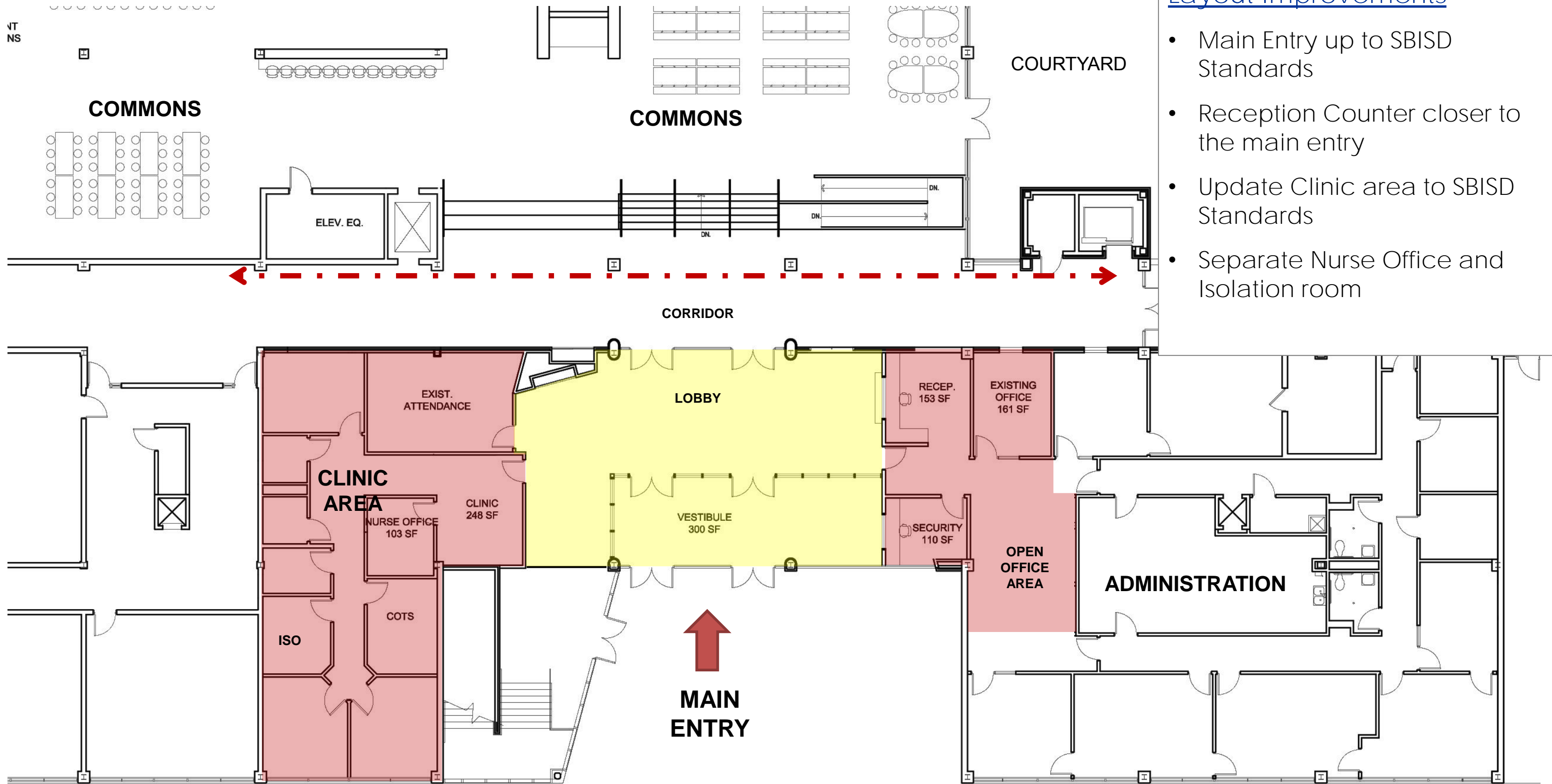
# Stratford High School Additions and Renovations

## SBISD STANDARD – SCHOOL MAIN ENTRY SEQUENCE



# Stratford High School Additions and Renovations

## Proposed Floor Plan Layout – Main Entry



### Layout Improvements

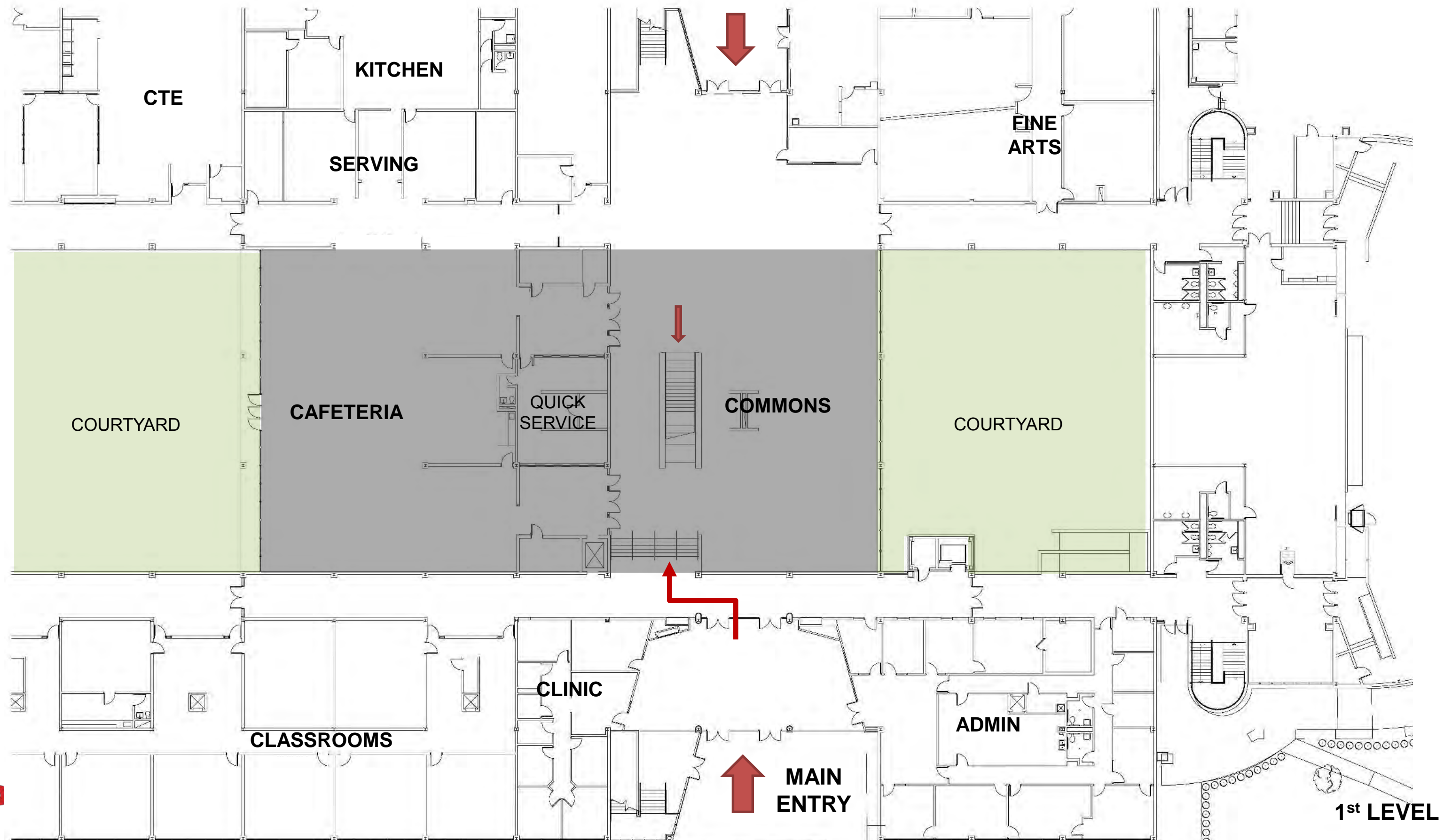
- Main Entry up to SBISD Standards
- Reception Counter closer to the main entry
- Update Clinic area to SBISD Standards
- Separate Nurse Office and Isolation room



# Dining Commons

# Stratford High School Additions and Renovations

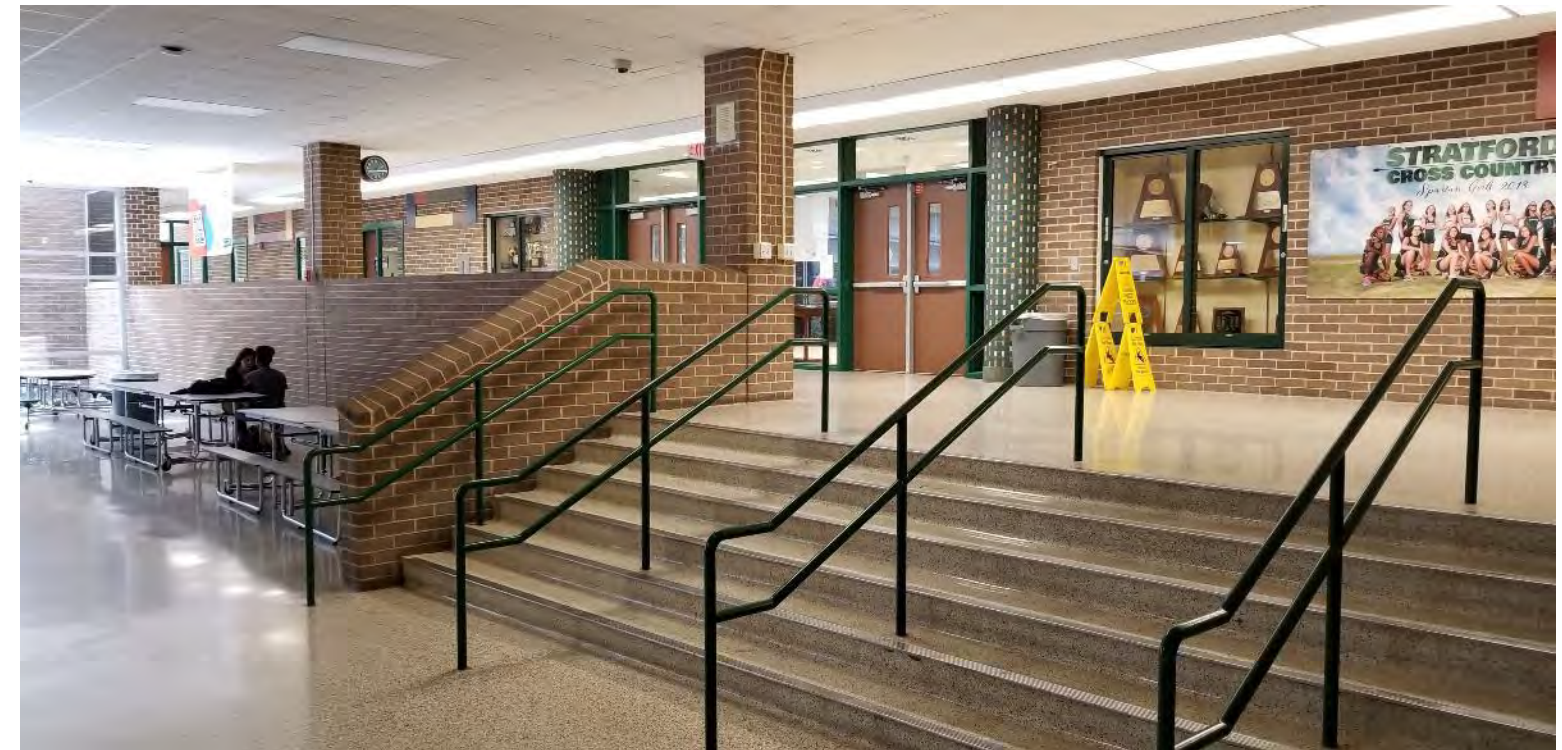
## Existing Student Commons





# Stratford High School Additions and Renovations

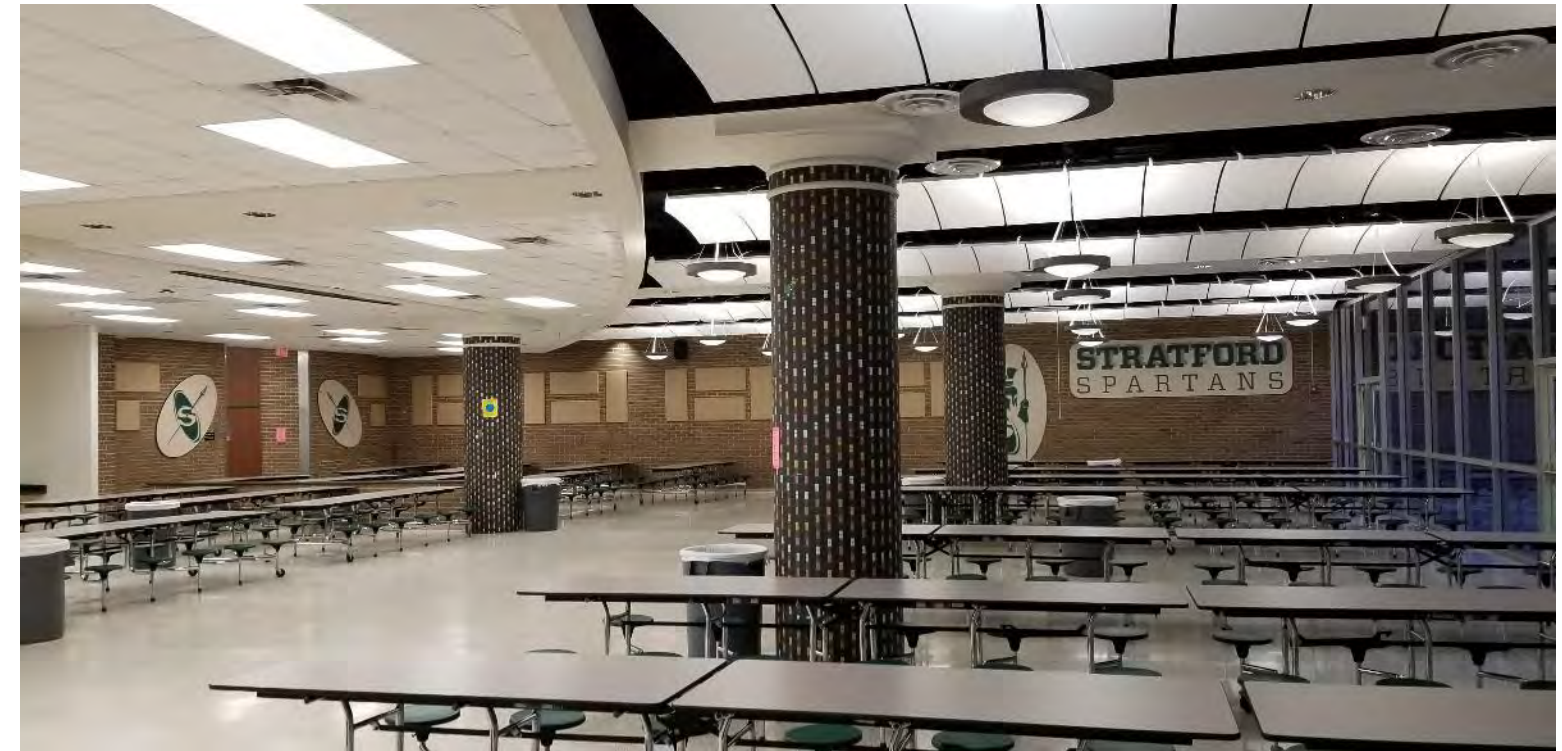
## Existing Student Commons - Photos



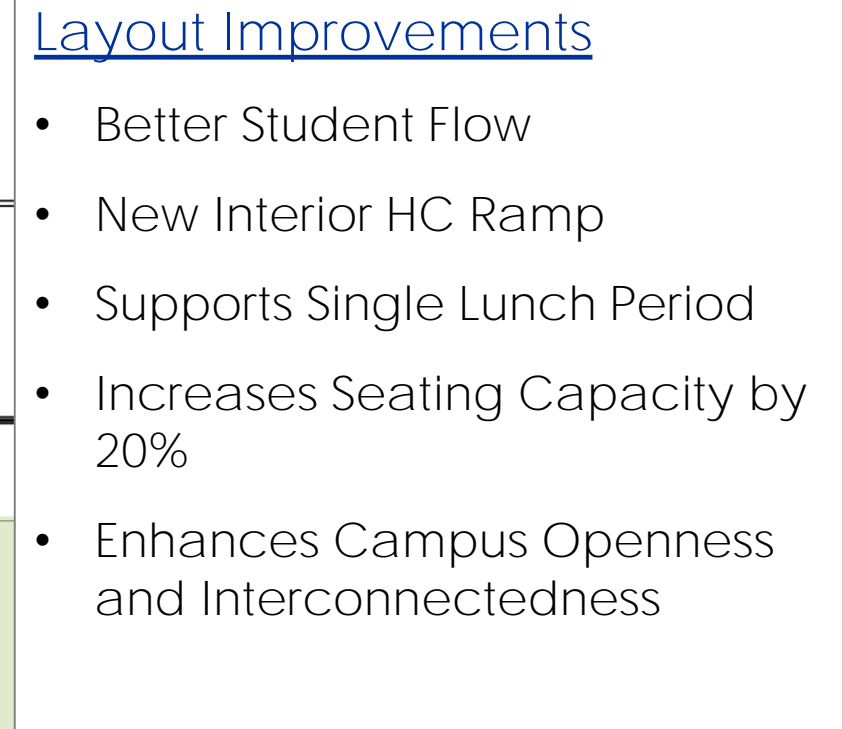


# Stratford High School Additions and Renovations

## Existing Student Commons - Photos





















# Stratford High School Additions and Renovations

## Dining Commons Interior Development



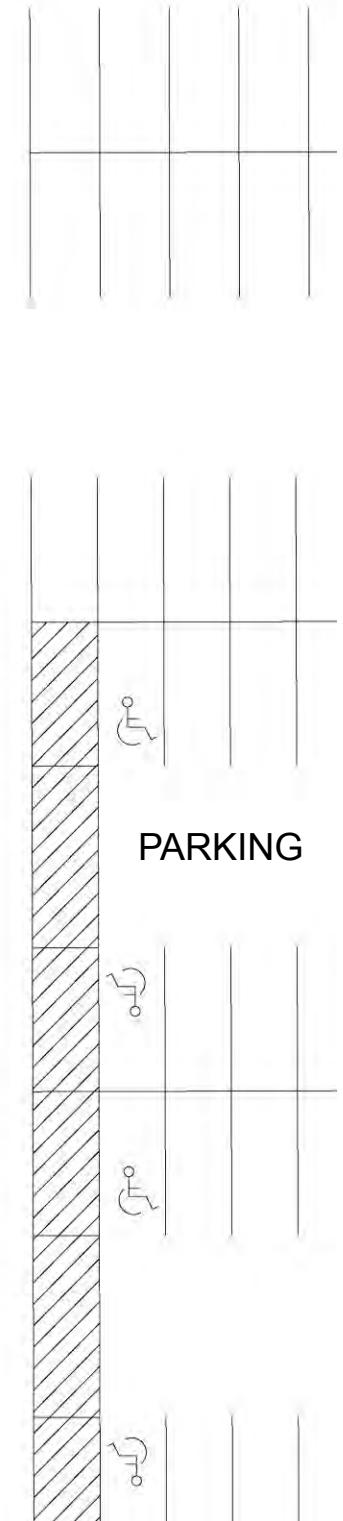
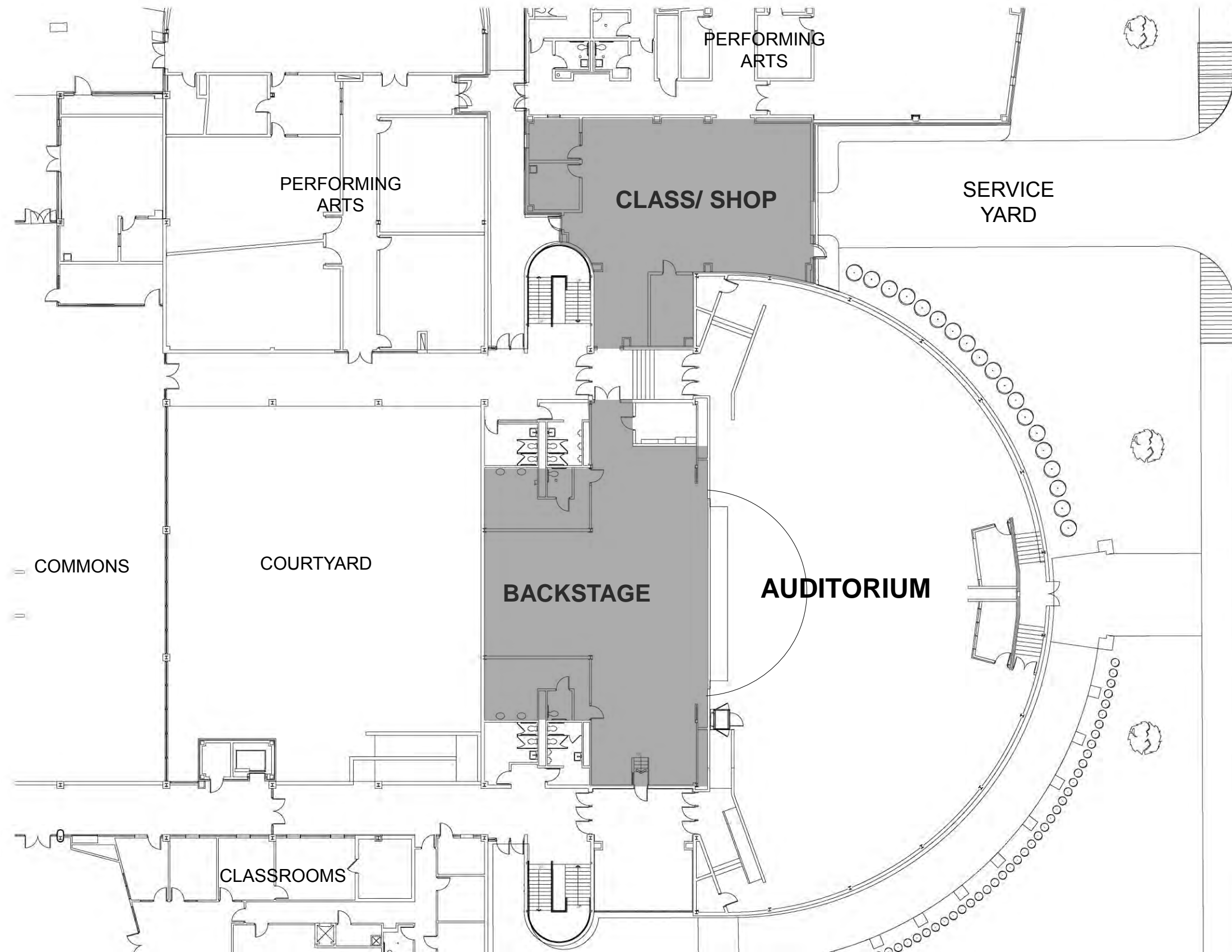


# Repurposed Areas



# Stratford High School Additions and Renovations

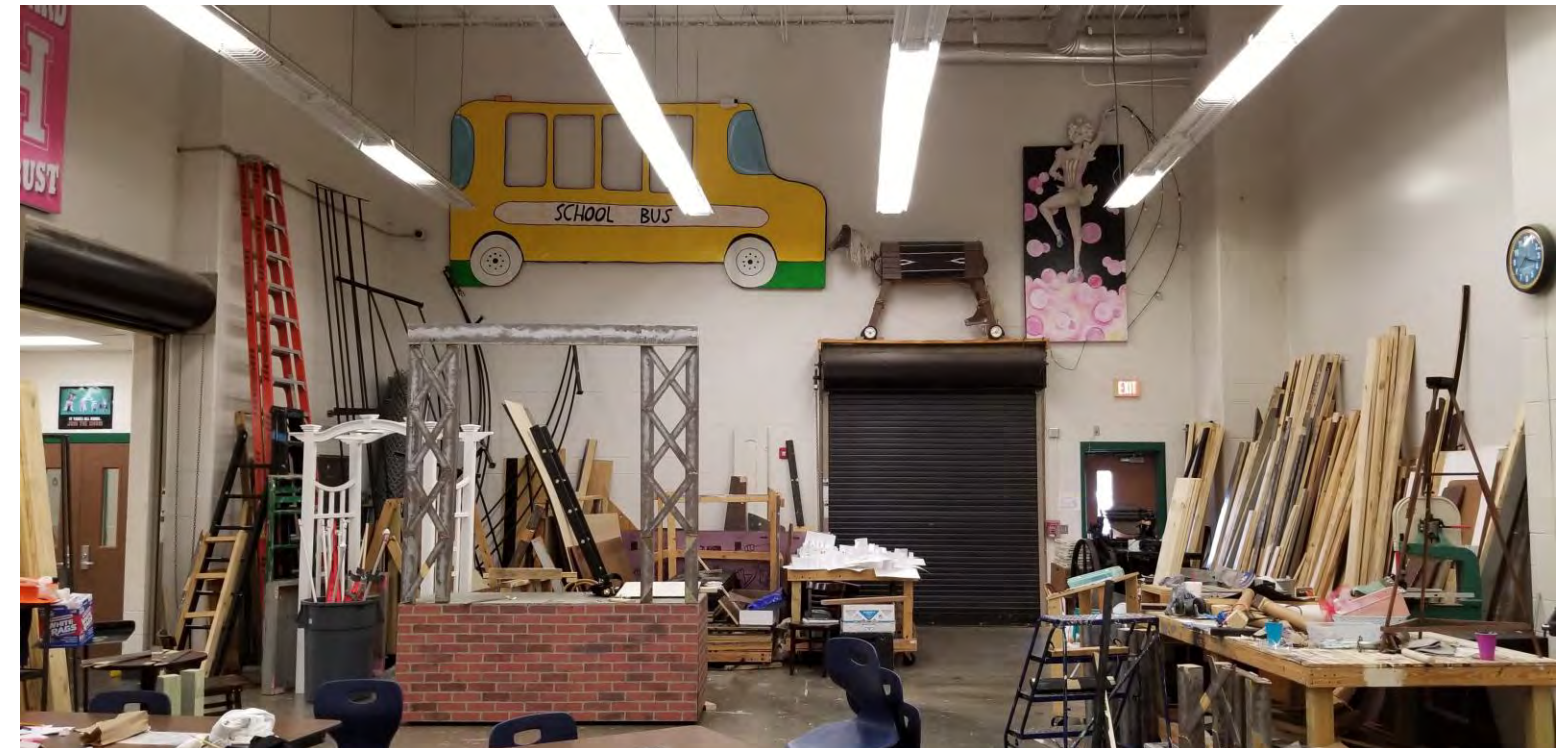
## Existing Repurposed Areas





# Stratford High School Additions and Renovations

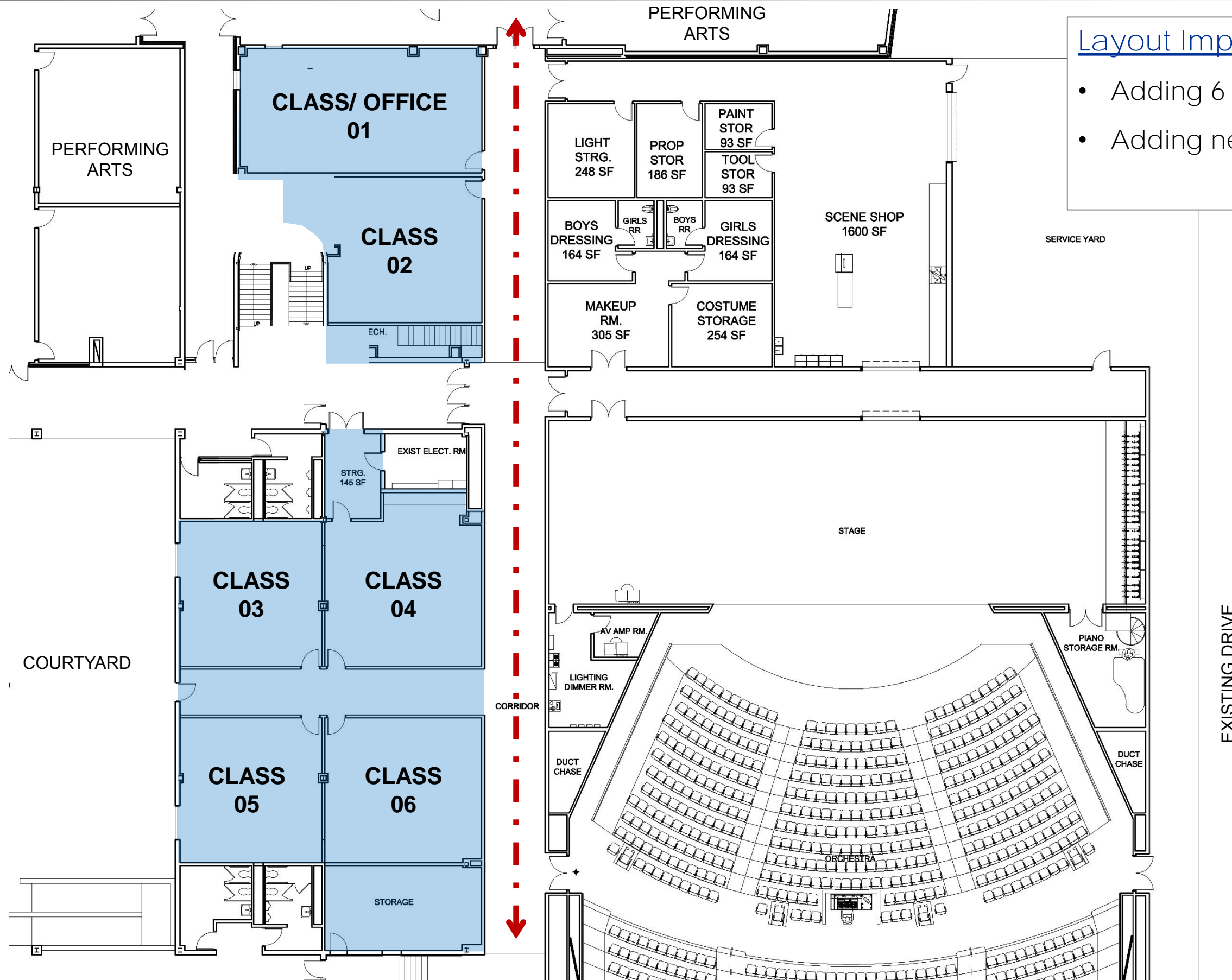
## Existing Repurposed Areas - Photos





# Stratford High School Additions and Renovations

## Proposed Floor Plan Layout – Repurposed Area



### Layout Improvements

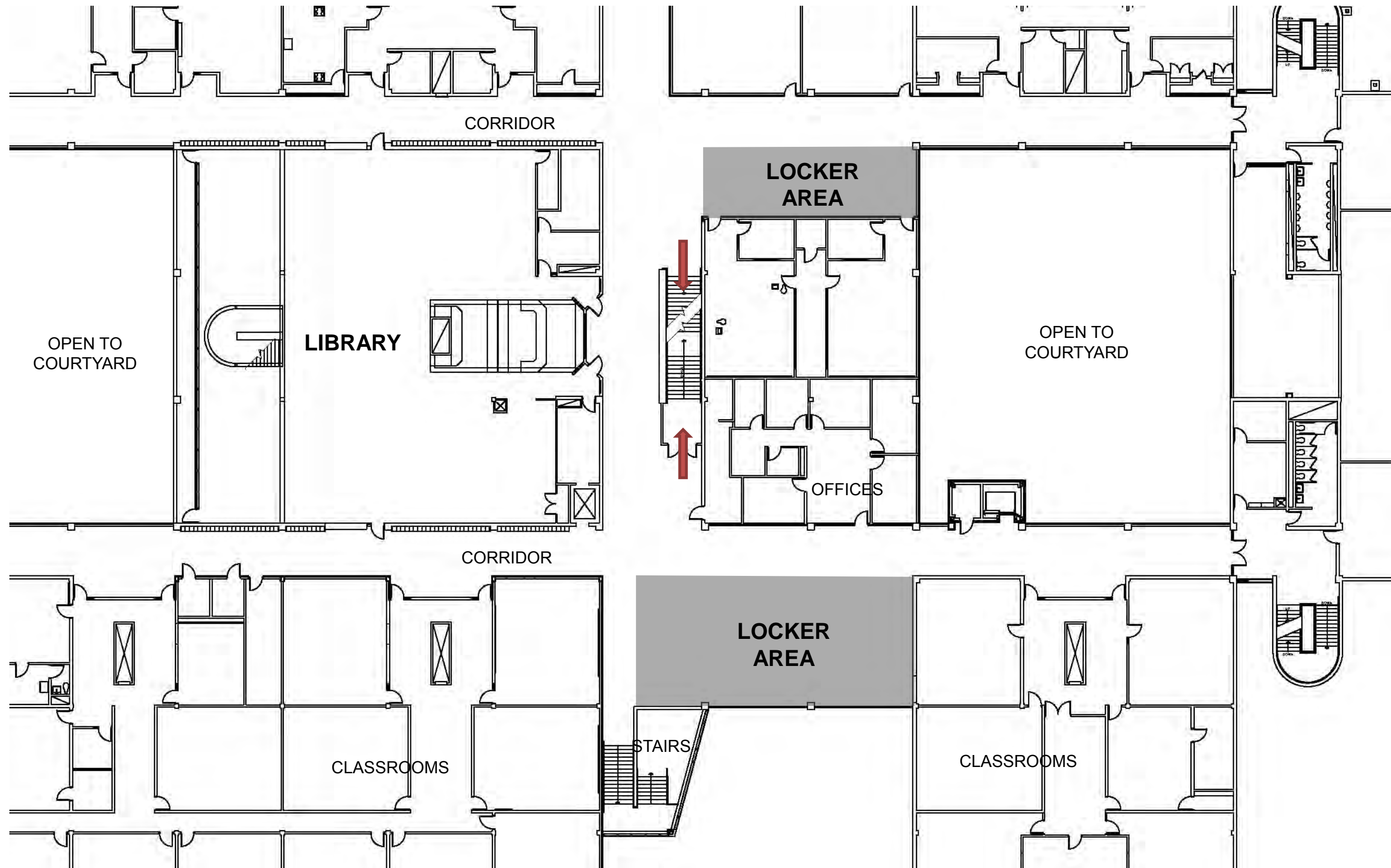
- Adding 6 new Classrooms
- Adding new Storage



# Locker Areas (2<sup>nd</sup> and 3<sup>rd</sup> Levels)

# Stratford High School Additions and Renovations

## Existing 2<sup>nd</sup> Level Repurposed Locker Area





# Stratford High School Additions and Renovations

## Existing 2<sup>nd</sup> Level Repurposed Locker Area - Photos





# Stratford High School Additions and Renovations

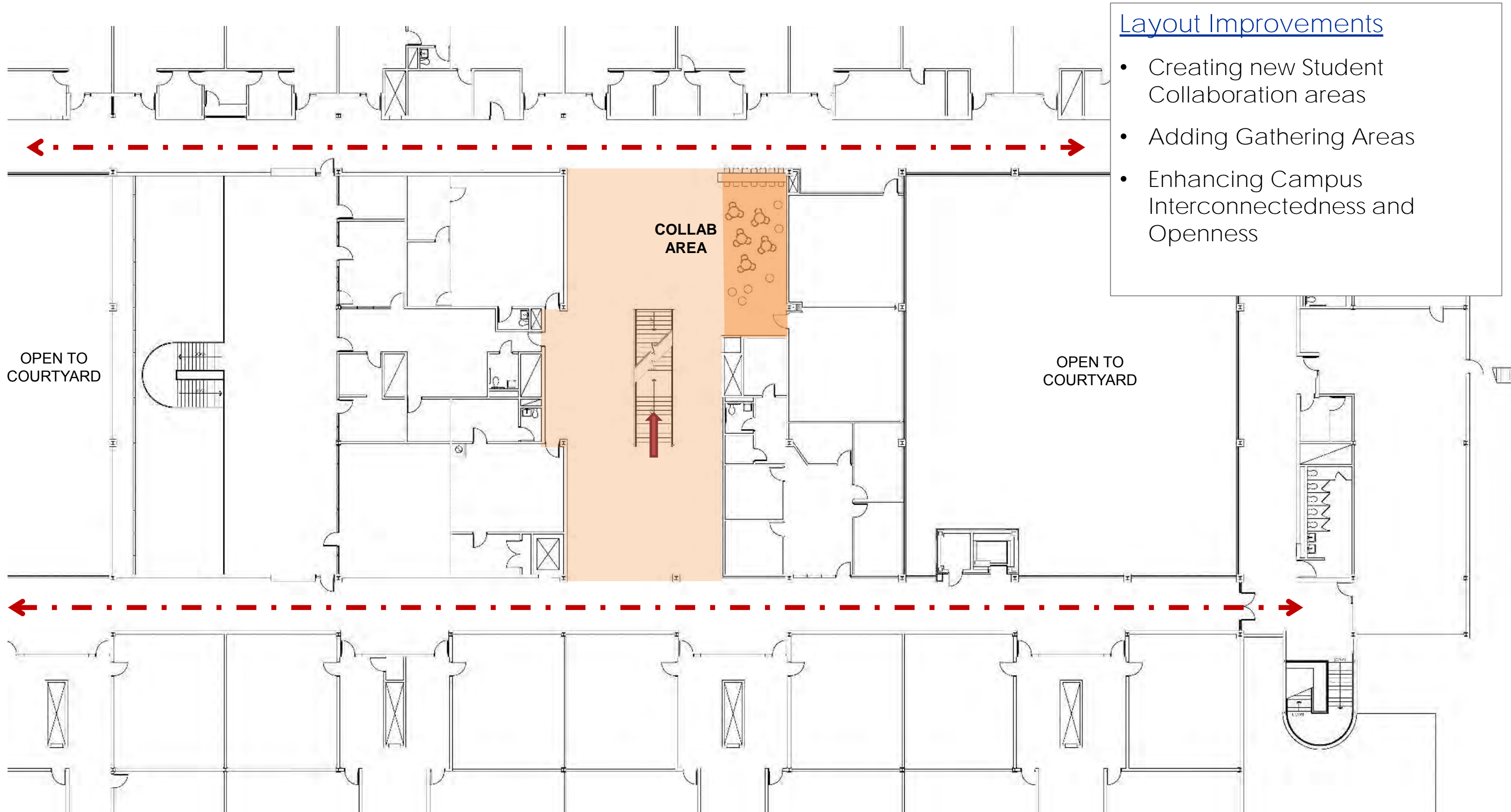
## Proposed Floor Plan Layout – 2<sup>nd</sup> Level Repurposed Locker Area





# Stratford High School Additions and Renovations

## Proposed Floor Plan Layout – 3<sup>rd</sup> Level Repurposed Locker Area



### Layout Improvements

- Creating new Student Collaboration areas
- Adding Gathering Areas
- Enhancing Campus Interconnectedness and Openness

# PAT 08 Review



- Log in to: **slido.com**
  - Enter Code: **XX**
- 1. Are we going in the right direction for the overall layouts for the following areas:**
- **Gym Secure Access**
  - **Main Entry Access/ Admin/ Clinic**
  - **Dining Commons**
  - **Repurposed Areas**
  - **Locker Areas (2<sup>nd</sup> and 3<sup>rd</sup> Level)**

- Log in to: **slido.com**
- Enter Code: **XX**

**1. Are we going in the right direction for the Stratford High School Additions and Renovations Design after PAT 08?**



# Next Steps



# Stratford High School Additions and Renovations

## PAT MEETING SCHEDULE

<b>PAT 01</b>	<b>PAT 02</b>	<b>PAT 03</b>	<b>PAT 04</b>	<b>PAT 05</b>	<b>PAT 06</b>	<b>PAT 07</b>	<b>PAT 08</b>	<b>PAT 09</b>
02-28-2019	03-18-2019	04-03-2019	04-25-2019	05-16-2019	06-27-2019	08-21-2019	09-04-2019	TBD
<b>KICK-OFF</b>	<b>PROG</b>	<b>SD</b>	<b>SD</b>	<b>DD</b>	<b>DD</b>	<b>DD</b>	<b>DD</b>	<b>DD</b>
<ul style="list-style-type: none"><li>• Fact Finding Review</li><li>• Gather Data</li><li>• Establish Guiding Principles</li></ul>	<ul style="list-style-type: none"><li>• Floor Plan improvements</li><li>• Auditorium plan review</li><li>• Site Improvements</li></ul>	<ul style="list-style-type: none"><li>• Refine Layout Options</li><li>• Acoustical consultant</li></ul>	<ul style="list-style-type: none"><li>• Refine Auditorium Layout Options</li><li>• Volumetric exterior concepts</li></ul>	<ul style="list-style-type: none"><li>• Refine Layout Options</li><li>• Review Exterior Design</li></ul>	<ul style="list-style-type: none"><li>• Review Overall Design</li><li>• June 27<sup>th</sup></li></ul>	<ul style="list-style-type: none"><li>• Auditorium Review (Layout, Exterior and Interior)</li></ul>	<ul style="list-style-type: none"><li>• Review Lobby, Clinic, Cafeteria, Locker areas</li></ul>	<ul style="list-style-type: none"><li>• Final Overall Review for Auditorium</li><li>• Final Overall review for Lobby, Clinic, Cafeteria, Locker Areas</li><li>• Review Material and Finishes</li></ul>







**Thank You!**

