



# Antelope Valley Region Community Resource Guide

---

# About Us

The National Center for Youth Law envisions a future where each and every young person in foster care, experiencing homelessness, or under the jurisdiction of probation, graduates from high school with a wide array of possibilities for their future. We join in solidarity with a growing movement across the country to ensure equitable opportunities and outcomes for ALL young people.

To achieve this shared vision, it is imperative that leaders from multiple public systems – child welfare, education, mental health, probation, judicial agencies, and the rich landscape of community organizations – band together with persistence and collaboration to build the conditions under which:

- **Children and youth** are engaged in learning, empowered to create futures they are excited about, and have champions in their corner for the long run.
- **Parents, family members, mentors, and other trusted adults** are fully invested in their role as education champions and are consistently and meaningfully supported.
- **System and community leaders** collaborate deeply on a shared vision that lifts up the voices of young people and helps realize equitable opportunities and outcomes for all students.
- **Professionals** working directly with young people in support of their education are appreciated, supported, and connected with one another.

## Using this Resource Guide

In support of this vision, we have compiled a Community Resource Guide of available programming and services for young people in the Antelope Valley. This guide can be utilized by community members or service providers to connect young people, especially those in foster care, with programs, services, and other community resources. Resources are categorized by type and may appear more than once throughout the Community Resource Guide, in each of the relevant service categories.

Recognizing the fluidity in available programming and services, this Community Resource Guide will exist electronically and can be continually updated for ongoing accuracy.



# Organization & Program Descriptions

# Organization & Program Descriptions

ORGANIZATION	PROGRAM	DESCRIPTION
Access		Service is provided within 3/4 mile on either side of a fixed route bus or rail line. Access Paratransit operates seven days a week, 24 hours of the day in most areas of Los Angeles County. It is a shared ride service that is curb-to-curb and utilizes a fleet of small buses, mini-vans and taxis. Fares are distance-based and range from \$2.75 to \$3.50 for each one-way trip. Beyond the Curb service (pick up at different location) available to those who are eligible. Access customers are eligible for the Free Fare program, so they can ride most bus and rail systems within Los Angeles County, including Metrolink, for free. Just present the green Access Rider ID Card as fare when you board. You don't have to register, and using the Free Fare program does not affect your eligibility for Access paratransit.
Advancing Communities Together	Antelope Valley Youth Build (AVYB)	Leadership development program that offers opportunity youth from the ages 18 and above an accredited high school diploma through our education partner YouthBuild Charter School of California. The purpose is to offer youth a safe, supportive, and structured learning environment as well as helping them rebuild their communities and their lives. Participants spend 6 – 24 months in the program dividing their time between hands on construction learning utilizing Building & Trades Multi Craft Core Curriculum (MC3), career training, and project based learning.
Alafia Mental Health Institute		Hours: Monday - Friday 8:30 am - 5:00 pm. Contact provider to begin phone intake. Provider may have waiting list. Youth in care will need minute order or DCFS 179 form . Services provided: 0-5 mental health services, crisis intervention, prevention and early intervention (PEI), medication support, mental health services, psychiatry specialized foster care, targeted case management (TCM).
America's Job Center of California		This Job Center is the Antelope Valley Workforce Development Consortium that offers an array of services to both employers and job seekers which is comprised of the South Valley and Antelope Valley Work Source Centers. The Workforce Innovation and Opportunity Act (WIOA) of 2014 enacted a comprehensive youth employment program for serving eligible youth, ages 14 - 24, who face barriers to education, training, and employment.
American Health Services LLC		Programs/Services: Narcotics replacement therapy, counseling, and suboxone (FDA approved treatment for opioid addiction).
Antelope Valley College	Foster & Kinship Care Education	Office Hours (as of fall 2018): Monday – Friday, 8:00 am – noon.
Antelope Valley College	STAR Mentoring Program	STAR (Student Transfer and Academic Retention) is a Federal Student Support Services program. It's designed to identify promising students and provide instructional support services above and beyond what is currently being offered. No cost. Services include: Academic, goal setting and career counseling; progress monitoring and personal support through regular meetings; a limited amount of supplemental grant aid scholarships; cultural enrichment activities; peer/ faculty mentoring; priority registration; 4-year college visits and transfer assistance; study skills, supplemental instruction and tutoring; computer literacy and research skills; Summer Bridge program; academic enrichment class; financial aid and scholarship application assistance. Transportation provided for off-site four year campus visits. No cost.

ORGANIZATION	PROGRAM	DESCRIPTION
Antelope Valley Community Clinic	EOPS & CARE	Extended Opportunity Programs and Services (EOPS) is a California Community College program to assist educationally disadvantaged students with financial need who want to attend college. The Antelope Valley College EOPS program receives state and district funds to recruit, enroll, and support these students that may not otherwise seek higher education. One-on-one counseling, early registration, tutoring, grants, campus visits and clerical services are provided. No cost.
	Guardian Scholars Foster Youth	The Guardian Scholars Program aims to connect current and former foster youth with a support system to help develop the tools needed to succeed in, through, and beyond college. AVC Guardian Scholars works to: encourage students to participate in interesting and/or beneficial activities, events, or programs; support students concerning academic, personal, mental, and/or emotional well-being; provide enriching activities and create a scholarly community that supports success. No cost.
	Learning Center: General Tutoring	Offers free subject tutoring, test preparation workshops and orientations for the Learning Center format. Students are limited to a maximum of two hours of tutoring each week. They are limited to one hour in one subject and an additional hour in a second subject. The two-hour limit does not include services that are provided in other programs in the Learning Center. Appointments usually aren't filled on the same day the appointment is requested. Links to Reading Center, Math Center, Writing Center and other support services can be found online. EOPS, STAR and Guardian Scholars also extend tutoring services to those enrolled in their programs; more information can be found under the mentorship tab on their website.
	Library	Youth over the age of 14 are not allowed on the second floor of the library. Youth have access to computer, internet, printing, and support from on campus librarian. Youth can request a non-student card to check out books from the library. The cost is \$10 per school year. Guardian must provide a valid identification card when requesting a card. Library Hours: Please call to get the most recent schedule, as the library hours change periodically.
Antelope Valley Community Clinic		Provides services for physical, mental and oral health care needs. Medi-Cal, Medi-Cal HMO & other commercial plans are accepted. For those without insurance, fees are based on income. AVCC is a Federally Qualified Health Center (FQHC) and your Patient-Centered Medical Home (PCMH). Services: Primary care, dental services, mental health, pediatrics, urgent care, patient center medical home, Lancaster adult day health care, detox services.
	Lancaster location	Services: Primary Care, Mental Health, Psychiatry, Podiatry, Endocrinology and Cardiology. Hours of Operation: Monday through Friday, 7:30 am – 5:00 pm (extended hours Tuesday and Thursday until 6:30 pm based on availability). Lab Hours: Monday – Friday, 7:30 am – 3:30 pm. Dental Clinic Hours of Operation: Monday – Friday, 7:30am – 5:30 pm. Urgent Care/Walk-in clinic is for conditions that require prompt attention, but do not pose an immediate, serious threat to your health or life. Hours of Operation: Open every day 7:30 am – 8:00 pm.
	Palmdale location (47th St.)	Services: Primary Care, Mental Health, Psychiatry. Hours of Operation: Monday – Friday, 7:30 am – 5:00 pm; Saturday, 8:00 am – 8:00 pm.

# Organization & Program Descriptions

ORGANIZATION	PROGRAM	DESCRIPTION
	Palmdale location (East Palmdale Blvd.)	Services: Primary Care, Mental Health, Psychiatry. Hours of Operation: Monday through Friday, 7:30 am – 5:00 pm (extended hours Wednesday until 8:00 pm). Lab Hours: Monday – Friday, 7:30 am – 3:30 pm. Dental Clinic Hours of Operation: Monday – Friday, 7:30am – 5:00 pm.
Antelope Valley Health Neighborhood	Operation Motherhood - Moms Supporting Moms	Meets every Tuesday at 10:00 am. To join or refer someone call: (213) 334-0653. Facilitated by Theion and Michelle.
Antelope Valley Partners for Health	Welcome Baby Program	Welcome Baby is a voluntary, universal home visitation program offered at no cost to all mothers giving birth, or planning to give birth at participating hospitals in Los Angeles County. The program includes trained professionals who work with patients on site at the hospitals and in their homes. Registered Nurses, Parent Coaches and Hospital Liaisons provide individual support and information on topics like parenting and early child development, bonding and attachment, and assistance on issues such as basic health care, nutrition, breastfeeding and home safety.
	Lactation Center & Breastfeeding Support Group	Lactation support group meets Mondays, 10:00 am - 11:30 am.
	United We Mentor	This is a mentorship program that helps empower youth in the AV to make positive life choices through the use of group mentoring sessions and workshops. Workshops consist of guided group activities that encourage laughter, fun and getting to know each other. Mentees practice communication skills, conflict resolution, life skills and best practices to build self-confidence. No cost. Note: they are no longer providing service due to a lack of funding, however they plan to re-extend service when funding permits.
	Healthy Families of America	Direct case management and home-visitations services using the Healthy Families America evidence-based model, a prevention program designed to promote positive parenting, enhance child health and development, and prevent child abuse and neglect.
Antelope Valley Hospital		Full service, acute care hospital. Offers the Antelope Valley the only trauma center, pediatric unit, NICU, inpatient mental health care, labor and deliver, accredited chest pain center/STEMI receiving center, advanced primary stroke center and comprehensive community cancer center.
	Teen Volunteer Program	Youth must complete an application and have caregiver sign as well. They must have a letter of Recommendation from a teacher, family friend or co-worker (if applicable) and must attach their current grades or report card. A 100 hour commitment is required if volunteering for program. Youth usually complete this in 10 months.
Antelope Valley Kidz Connection		Medi-Cal accepted. To access services, CSW needs to speak with Service Linkage Special (SLS) within DCFS office to make referral. This is the only way to obtain services at this location. Services: 0-5 Mental Health Services, Mental Health Services, Psychological Testing, Specialized Foster Care, Targeted Case Management (TCM).
Antelope Valley Transit Authority		Fares: One way trip (full: \$1.50, reduced: 0.75); 4-hour pass (full: \$2, reduced: \$1); day pass (full: \$5, reduced: \$2.50); weekly pass (full: \$15, reduced: \$7.50); 31 day pass (full: \$50, reduced: \$25). Local Transit Hours: Monday through Friday from 5:00 am to 12:45 am, Saturday from 6:00 am to 11:45 pm, and Sunday from 6:30 am to 8:45 pm. Visit the website for the local transit service map, AVTA schedules and routes.

ORGANIZATION	PROGRAM	DESCRIPTION
Antelope Valley Union High School District	Palmdale High School	Tutoring services provided in the library, Monday – Friday (except Wednesday), 2:45 pm - 3:45 pm.
	Eastside High School	Tutoring services provided in the library, Monday, Tuesday, Thursday, 3:01 pm - 4:01 pm.
	Highland High School	Please see website for updated schedule.
	Lancaster High School	Tutoring services provided in the library, Monday, Tuesday, Wednesday, Thursday, 2:45 pm - 3:45pm (select Wednesdays from 1:05 pm - 2:05 pm).
	Online Resources	See Sylvan AVUHSD, linkage to district online resources and linkage to student walkthroughs.
	Link Crew	Link Crew is a freshman transition program that welcomes incoming freshmen and makes them feel comfortable and supported throughout the first year of their high school experience. Link Crew trains incoming juniors and seniors to support and be positive role models for incoming 9th graders.
Antelope Valley Work Source Center		Provides services for the job seeker, including: Workshops on resume development, interview skills and networking; Small group and one-on-one coaching, career counseling and job search support; Access to job listings and on-site employer recruitments; Job training programs for eligible clients; Free access to computers, internet, fax and phones; Referrals to community partners for additional supportive services; Special programs for youth; Custom services for veterans; Weekly hiring events; Recruiting and Screening of Applicants; Skills Assessments; Support for Job Fairs and Open Houses; Referrals to Training Providers for Occupational Skills Training Customized Training Programs; No Fee Internet-Based Automated System to Place Job Openings; Access to Job Leads; Job Seeking and employment preparation workshop; Resume Creation; Job Club.
AV Tutoring		Offers K-12, college and test prep assistance. Only renders service through home and community visits. Fee: \$35 an hour.
Barnes Aviation		Barnes Aviation is a full service FBO conveniently located in the Antelope Valley at William J. Fox Airport providing flight training, aircraft rental and maintenance. Programs Offered: Private Pilot Certificate, Commercial Pilot Certificate, Flight Instructor, Tail Wheel Pilot Training, Aerobatic Training, Flight Training, Aircraft Rental, Aircraft Maintenance, Oxygen Service, Weather and Flight Planning, Hangar Space, Major Repairs and Aircraft Rebuilding.
Bartz-Altadonna Community Health Center		Nonprofit patient centered trauma informed primary care services. Services: primary care, HIV, hepatitis C, women's health, reproductive health and family planning, OB/GYN, pediatrics, psychiatry, counseling, one day intensive grief and loss workshops, art therapy, alcohol and drug dependency, medically assisted treatment and parenting. Health Center Hours: Monday – Friday, 7:30 am - 6:30 pm; Saturday, 9:00 am - 6:00 pm. Office Hours: Monday – Friday, 8:00am - 5:00pm.
		Offers parenting classes, reproductive health and family planning, OB/Gyn, and women's health services.
Boys and Girls Club AV	Homework Assistance	\$25 a year for assistance and access to other club features.
	Foster Friends	Mentors youth in care through SELF model (strength, endurance, love, and friendship). Participants come together with other youth in care and have a platform to discuss positive/negative experiences with peers, goal set and engage in fun activities. Meets twice a week. Cost is \$25 a calendar year, provides admittance to all BGC/V programs.

# Organization & Program Descriptions

ORGANIZATION	PROGRAM	DESCRIPTION
Brandman University		Bachelor's Degree: Applied Studies, Business, Communications, Criminal Justice, Legal, Data Analytics & GIS, Human Resources, Information Technology, Leadership, Psychology & Counseling, Social Work, Sociology, Teaching & Education. Master's Degree: Business, Data Analytics & GIS, Healthcare, Human Resources, Leadership, Psychology & Counseling, Education Credentials & Authorizations: Leadership, Teaching & Education.
Breakthrough Parenting		10-week course, court approved, and participants receive a letter of completion.
California State University Bakersfield	Antelope Valley Satellite Campus	8 undergraduate degrees: Business Administration: Accounting, General Business, Management; Child, Adolescent and Family Studies; Criminal Justice; Rn to BSN (online); Sociology: Traditional, Human Services; Liberal Studies: Traditional, IBEST, ISPED; Interdisciplinary Studies; Natural Science Foundation. 6 graduate degrees: Business Administration (MBA), Education Administration (MA), Special Education (MA), Master of Social Work (MSW), Administration (MSA) (online), Curriculum and Instruction (MA) (online); Teaching Credential: Multiple Subject, Single Subject, Special Education.
Care Net Women's Resource Center of North County		Provides pregnancy decision/options consultations. Cost-free. Youth are able to schedule and attend appointments on their own. Consultations can include education regarding youth's reproductive and health rights.
CASA of Los Angeles County		CASA can take referrals from outside parties or anyone who knows a youth and thinks they could benefit. To refer a youth for a CASA, do one of the following: (a) drop-in to the office and complete referral in person, (b) call CASA directly, or (c) contact referrals@casala.org.
Change Lanes Youth Support Services		Programs/Services offered: Outpatient drug treatment, NA 12-step offered every Tuesday at 12:30 pm.
Child and Family Guidance Center		Programs/Services: crisis intervention, field capable clinical services (FCCS), medication support, mental health services (MHS), psychological testing, specialized foster care, targeted case management (TCM), therapeutic behavioral services (TBS), wraparound services, full service partnership (FSP).
Children's Bureau of Southern California	Black Infant Health Program – Antelope Valley	Provides 10-week parenting classes. Program provides mental health referrals, 1-on-1 services, pre-natal care and post-natal care. Participants learn proven strategies to reduce stress and develop life skills. This is accomplished through a group-based approach with complementary case management. Weekly group sessions help women build social support, access their strengths, make positive choices and set health-promoting goals. The goal of the BIH Program is to improve African-American infant and maternal health, as well as decrease health and social inequities for women and infants.
	Partnerships for Families	Provides assistance with child care options, housing referrals, parent training, substance abuse services, domestic violence services, parent self-help, income support services, mental health services, vocational development services, and more.
		Mental Health services for ages 5-17. Caregiver needs to call to request service. For youth in foster care placement paperwork and minute order is needed. CSW can provide this information.

ORGANIZATION	PROGRAM	DESCRIPTION
Children's Center of Antelope Valley		Hours: Monday – Friday 8:00 am – 6:00 pm (including for walk-ins). Medical and PPO insurance accepted. Referral form can be completed or caregiver could call to request services. Programs/Services: 0-5 mental health services, community outreach, crisis intervention medication support, mental health services (MHS), prevention and early intervention (PEI) specialized foster care, therapeutic behavioral services (TBS).
City of Lancaster	Recreation	Visit website to access the activity guide and registration link.
	Volunteer Opportunities	Volunteer interest forms are available at the reception desk in City Hall, or on the website to download.
City of Palmdale	Palmdale City Library	The website can be assessed in Spanish. The website allows to renew rentals online. There is a activity calendar posted on the website. The library offers online tutoring that can be accessed from a home computer. To apply for a library card go to the library with a caregiver with a valid ID showing the current address, if the address is not current on the ID bring in a utility bill. Foster parents must bring notice from the department saying they are the foster parent for the child. Library Hours: Mon – Thurs, 10:00 am - 8:00 pm; Fri – Sun 10:00 am – 5:00 pm.
	Recreation	Visit website to access the activity guide and registration link.
	Volunteers: Court Ordered Service	The City accepts Court Referred Community Service in the following programs. A referral must be completed from the Volunteer Center of Los Angeles prior to registering with a City program.
	Administrative Services Community Programs	The City does accept community service participants from GAIN (Greater Avenues to Independence) based upon program needs. Participant should be aware that they must complete a program interview and background check prior to acceptance.
	Volunteers: Service Learning	Interns: The City accepts student learners and interns based upon availability. Students should contact the city well in advance if they have a specific department or program they would like to intern for. Service Hours: Student learners completing school required hours (20 hours or less) that are 16 years of age or older may contact SAVES. Available Hours: Monday – Thursday, 7:30 am – 6:00 pm. Service Project: Student learners are encouraged to develop service projects based on their individual interests.
Clinica Medica Mi Familia		Services: physical exams, x-rays, ultrasound, TB test, CT scans, urgent care, and orthopedic medicine.
Clinica Mi Pueblo		No appointment necessary. Services include: General medicine consultation, specialty consultation, laboratory, pharmacy, diagnostic studies. Hours: Monday – Friday, 9:00 am – 6:00 pm; Saturday, 9:00 am – 3:00 pm. Last patient received 15 minutes prior to closing.
Clinical Training Institute		Programs Offered: Phlebotomy Technician, Pharmacy Technician, Medical Biller/Coder, Medical Assistant.
Contractors State License Schools		California State License Services (CSLS) is the largest school in California devoted to the Construction professional. CSLS helps its students pass the exam to become licensed contractors in the State of California. Programs Offered: Home Inspection Courses, Estimating for Construction, Blueprint Reading, ICC Certification, EPA – RRP Certification
Cycles of Change Recovery Services		Programs/Services: 12-step, bio sound therapy alcohol rehab program, addiction intervention, detox, residential treatment, family therapy, outpatient program and extended care.
Desert Winds Church		The church offers hot meals every Tuesday from 6:00 pm – 7:00 pm.

# Organization & Program Descriptions

ORGANIZATION	PROGRAM	DESCRIPTION
Design for Change Recovery Services		Holistic rehab center.
East West Urgent Care		Services: Urgent care services to treat common illnesses and injuries, sports and primary physicals, on site labs, vaccinations and immunizations. Hours: Monday – Friday, 9:00 am – 7:00 pm and Saturday, 10:00 am – 3:00 pm.
Family First Family Medical Practice		Services: Pediatrics, geriatrics, men and women's health, professional medical exams. Patients are accepted with and without insurance. Hours: Monday – Friday, 8:00 am – 5:00 pm.
Family Urgent Care and Industrial Medical		Services: family practice, urgent care, orthopedic injuries, stem cell treatment. Hours: Monday – Friday, 9:00 am – 6:00 pm.
Grace Resource Center		Grace Resources, Inc. is an interdenominational para-church social service agency that adheres to the Christian Faith. GRI, Inc. is not a church nor is it under the authority or direction of any church or denomination. GRI does not mandate any religious beliefs or activities from any client as a requirement for services. Provides resources for community members. Can provide pregnant and parenting mothers with emergency baby supplies (diapers, wipes and formula every 14 days). Resources available on drop-in basis. Adults not needed for youth to receive supplies. Hours: Monday – Friday, 9:30 am – 4:00 pm.
	Volunteer Opportunities	Volunteers are needed for the hot meal service on Wednesday and Friday, 5:00 pm – 8:00 pm and Sundays, 12:00 pm – 3:00 pm. Volunteers can show up to volunteer without signing up as long as documented hours are not needed. If a volunteer needs documented hours; contact Matthew Buck to schedule a meeting Monday – Friday, 9:30 am – 4:30 pm.
	Food Pantry	The food pantry is open on Tuesdays and Thursdays at 10:00 am and 1:00 pm. It is important to be on time and to bring ID. They have gently used closed, diapers, wipes, and formula available at times. They offer volunteer and community hours to youth. The center also offers hot meals three days a week, Sunday at 1:30 pm, Wednesday at 9:00 am, 12:00 pm, 5:30 pm, and on Friday at 6:00 pm.
Great Commission Worship Center		Free food is given away every 2nd and 4th Friday of the month from 9:00 am – 2:00 pm.
Hathaway Sycamores Child And Family Services		Hours: Monday – Friday 8:30 am – 5:00 pm. Programs/Services: 0-5 mental health services community outreach services, wraparound, TAY FSP, intensive field capable clinical services (IFCCS), co-occurring disorders, prevention and early intervention (PEI), medication support mental health services (MHS), psychological testing, therapeutic behavioral services (TBS).
Helping Hands Feeding Children		Please bring empty bags to pick up food. They offer monthly community activities such as ice cream socials, need to call to inquire what is going on throughout the month. They offer clothing, and school supplies when available. The pantry is open every 2nd and 4th Saturday of the month from 10:00 am – 11:00 am. They also provide food on an emergency basis from Tuesday – Friday, 9:00 am – 11:00 am.
High Desert Medical College		Clinical Medical Assisting, Dental Assisting, Medical Administrative Assisting, Pharmacy Technician, Ultrasound Technician, Vocational Nursing.
High Desert Medical Group		Services: 24 hour nurse advice line, primary care provider, specialty services, urgent care. Medi-Cal is accepted if the following the patient is a member of the following plan: HealthNet, HealthNet Expansion, LA Care, or LA Care Expansion.

ORGANIZATION	PROGRAM	DESCRIPTION
HopSkipDrive		Fares vary depending on trip. Carpool is available for lower cost. Check estimate of cost online. Rides are available for various things, such as to and from school, sport events, and activities.
Inner Circle	Children's Advocacy Center	Provides a safe and supportive place where abuse concerns can be explored. Forensic interviews, family advocacy and mental health services.
Job Corps		Various locations. Program provides housing while in program. Job Corps is the nation's largest career technical training and education program for young people ages 16 through 24. Students can earn a high school diploma, a high school equivalency credential, or college credits through Job Corps. Job Corps offers career technical training in more than 100 career areas. Students receive housing, meals, basic health care, a living allowance, training, and preparation for a career, all at no cost. For up to 21 months after graduation, a career transition counselor will help students make the transition from Job Corps into the real world. Spanish and English brochures are available.
Kaiser Permanente	Palmdale Medical Offices	Services: Pharmacy. No emergency care, no after hours, no urgent care.
	Lancaster Medical Offices	Services: Pharmacy, urgent care. No emergency care, no after hours.
	Antelope Valley Medical Offices	Services: Pharmacy. No emergency care, no after hours, no urgent care.
	Behavioral Health	Hours: Monday – Friday, 8:30 am – 5:00 pm. Services: Behavioral health services. No emergency care, no pharmacy, no after hours, no urgent care.
Lancaster Beauty School		Programs Offered: Cosmetology, Barbering, Advance Manicurist, Esthetician, Teacher Training.
Lancaster School District	Armargosa Creek Middle School	One hour of Math and Language Arts tutoring will be offered after school, enrichment tutoring may be offered as well.
	Endeavour Middle School	One hour of tutoring will be offered after school up to 3 days a week. Transportation will also be provided for students who normally take the bus to and from school.
	Piute Middle School	After school tutoring offered once a week. RISE After School Program provides homework assistance and child care until 5:30 pm. This is a resource that fills up quick, but foster youth are priority registrants. Registration begins in May of each year and students enrolled must re-enlist on an annual basis. Tutoring is offered on Wednesday, 3:00 pm – 4:00 pm, Room 33.
	New Vista Middle School	ACES Tutoring, students must sign up to participate. Offered Monday, Wednesday, Thursday, 3:00 pm – 4:00 pm.
	Online Resources	LSD Online textbook publishers provide online resources as well to reinforce and support instruction. 6th-8th Language Arts, Math, and Social Studies McDougal Littell (choose the appropriate grade and subject). 6th-8th Science Glencoe (choose California Programs and then appropriate grade level).
Lancaster Sheriff's Station	VIDA (Vital Intervention and Directional Alternatives)	Vital Intervention and Directional Alternatives (VIDA) is a structured 16-week program for non-violent, at-risk youth between the ages of 11 and 17½. Complete the online form to begin the process. Youth completes intake interview with trained VIDA staff members. During the interview, the applicant's risk level is assessed to determine if the youth meets the program's criteria. Participation includes home visits and school visits, mid-week and Saturday meetings. Caregiver participation is required at some of the meetings. \$75 fee to participate in this program.

# Organization & Program Descriptions

ORGANIZATION	PROGRAM	DESCRIPTION
Lancaster United Methodist Church		Volunteers may be needed to help serve lunch to individuals who are homeless on Mondays and Thursdays at noon. If interested, schedule a meeting with Marie Anne to sign up to volunteer.
Little Rock Community Clinic		Services: Primary care services to patients in the community of Littlerock and surrounding areas. Hours: Tuesday and Thursday, 8:00 am - 4:30 pm.
LogistiCare		LogistiCare manages and arranges for non-emergency medical transportation only. To arrange transportation: utilize the reservation phone number that corresponds to the member's insurance. To activate a will call return ride or to inquire about the ETA of a pick-up: utilize the Where's My Ride (WMR) number that corresponds to the member's insurance. Medical Transportation services are available Monday - Friday, 7:00 am - 7:00 pm.
Los Angeles County	Lancaster Library	The library offers free online live tutoring in both English and Spanish. The tutoring is offered for K-12 students, college students, and adult learners. They also offer online courses through lynda.com. They offer a calendar at the site for the activities that are happening throughout the month. This is a Los Angeles County library so if the student has previously been issued a library card through a Los Angeles County Library they can use that card, to replace a card the charge is \$3. To apply for a new card an application must be filled out and brought with the guardian to the library with a valid identification card. Cards are issued the same day and ready to use. Library Hours: Mon - Wed, 10:00 am - 8:00 pm; Thurs - Sat, 9:00 am - 5:00 pm; Sun, 1:00 pm - 5:00 pm.
	Littlerock Library	The website gives calendar of the activities that offered at the library throughout the month. The library offers free online live tutoring in both English and Spanish. The tutoring is offered for K-12 students, college students, and adult learners. They also offered online courses through lynda.com. This is a Los Angeles County library so if the student has previously been issued a library card through a Los Angeles County Library they can use that card, to replace a card the charge is \$3. To apply for a new card an application must be filled out and brought with the guardian to the library with a valid identification card. Cards are issued the same day and ready to use. Library Hours: Mon - Tues, 11:00 am - 7:00 pm; Wed - Sat, 9:00 am - 5:00 pm; Sun, closed.
	Quartz Hill Library	The library offers volunteer opportunities for youth. Youth have access to printing and making copies to complete school assignments. The website gives calendar of the activities that offered at the library throughout the month. The library offers free online live tutoring in both English and Spanish learners. The tutoring is offered for K-12 students, college students, and adult learners. They also offered online courses through lynda.com. This is a Los Angeles County library so if the student has previously been issued a library card through a Los Angeles County Library they can use that card, to replace a card the charge is \$3. To apply for a new card an application must be filled out and brought with the guardian to the library with a valid identification card. Cards are issued the same day and ready to use Library Hours: Mon, 9:00 am - 5:00 pm; Tue - Wed, 10:00 am - 8:00 pm; Thu - Sat, 9:00 am - 5:00 pm; Sun, closed.

ORGANIZATION	PROGRAM	DESCRIPTION
Los Angeles County Animal Care Center (Animal Shelter)		A short-term volunteering program is not available. Due to the amount of training required, the care center is unable to accommodate volunteers wishing to complete community service hours for school or another organization. Volunteers must be able to commit to a minimum of 2 hours per week and make a 9 month commitment to the animal care center at which they will volunteer. Volunteer Coordinators are available at each site.
Los Angeles County Department of Children and Family Services (DCFS)		Palmdale and Lancaster Regional Offices.
	Military Veteran Program	The Department of Children and Family Services - Military Veteran Program (DCFS MVP) consists of DCFS employees who have prior or current military service. Representatives from DCFS MVP voluntarily share their own experience in the military in order to provide direction and support for foster youth considering a career in the armed forces. The goal is to assist the youth with considering whether the military is appropriate and in their best interest.
	Child Protection Hotline	800-540-4000
	Cultural Broker Program	The African American Population in LA County is 8% however, DCFS African American caseloads is 24%. In an effort to decrease these numbers DCFS is partnering with the community in many ways, one particular way has been the Volunteer Cultural Broker Program, DCFS is reaching out to the community for help in healing our families. VCB's are advocates, mediators, negotiators, and liaisons that bridge the cultural gap between DCFS and families. The Mission of the Volunteer Cultural Broker (VCB) Program is to empower and advocate for African American children by promoting safety, enhancing effective teaming and engagement and eliminating cultural misunderstandings that lead to disproportionality and disparity for African American children and families.
	Parents in Partnership	In collaboration with DCFS, Parent Partners will use their experience to help support, educate and empower parents in their efforts to successfully navigate the DCFS system.
Los Angeles County Department of Mental Health	Transition Age Youth (TAY) Division	The Enhanced Emergency Shelter Program contained in the Mental Health Services Act (MHSA) Plan will serve the immediate and urgent housing needs of the Seriously Emotionally Disturbed (SED)/Severely Persistently Mentally Ill (SPMI) TAY population.
Los Angeles County Department of Parks and Recreations		To register for activities: click the park hyperlink or start with the find a park near you searchbar, select the activity on the park page, then register.
	Apollo Community Regional Park	Hours: sunrise to sunset.
	George Lane Park	Hours: sunrise to sunset.
	Jackie Robinson Park	Hours: sunrise to sunset.
Los Angeles County Department of Public Social Services		Open to the public Monday - Friday, 8:00 am - 5:00 pm.
Los Angeles County Library	Partnership with Tutor.com	Students have access to live tutors online. Visit library website and click Tutor.com under the Digital Library tab. Free with library card number.



# Organization & Program Descriptions

ORGANIZATION	PROGRAM	DESCRIPTION
	General Volunteer Opportunities	To volunteer at any of the below listed LA County Libraries, youth must complete an application and take it to the desired library. Various tasks are assigned. Please see below for library specific information.
	Volunteer Opportunities: Quartz Hill Library	Hours: Monday, 9:00 am – 5:00 pm; Tuesday – Wednesday, 10:00 am – 8:00 pm; Thursday – Saturday, 9:00 am – 5:00 pm. Youth will be required to complete Live Scan. This is free when completed in the main office in Santa Clarita. On occasions the Live Scan can be completed at the Quartz Hill Library. Tasks vary.
	Volunteer Opportunities: Littlerock Library	Hours: Monday – Tuesday, 11:00 am – 7:00 pm; Wednesday – Saturday, 9:00 am – 5:00 pm. Finger printing is needed if volunteers are over the age of 14 years old. Once application is submitted, youth will be contacted to move forward with fingerprinting process.
	Volunteer Opportunities: Lancaster Library	Hours: Monday – Wednesday, 10:00 am – 8:00 pm; Thursday – Saturday, 9:00 am – 5:00 pm; Sunday, 1:00 pm – 5:00 pm.
Los Angeles County Office of Education	Foster Youth Coordinating Services Coordinating Programs Tutoring	Students may be eligible to receive up to 20 hours of academic support with a review for potential additional hours, which may end prior to end of the fiscal year (June 30, 2019). Services are designed to be one-on-one in-home tutoring with adult supervision.
Los Angeles Training Institute for Alcohol & Drug Counseling		Programs Offered: Alcohol and Drug Counselor Certificate Program and continuing education units for counselors.
Masada Homes		Hours: Monday – Friday, 8:30 am – 5:30 pm. Programs/Services: 0-5 mental health services, community outreach prevention and early intervention (PEI), medication support, psychiatry services, school-based services, targeted case management (TCM), full service partnership (FSP), wraparound services.
Mental Health America		The nation's leading community-based nonprofit dedicated to addressing the needs of those living with mental illness. Hours: 9:00 am - 4:30 pm
Military Recruitment Offices		Antelope Valley Offices: U.S. Army Recruitment Office, U.S. Navy Recruitment Office, U.S. Air Force Recruitment Office, U.S. Marine Corps Recruitment Office.
North LA County CARES Mentoring Circle		Non-profit organization that focuses on the emotional, social, academic and professional development of children and the wellness of adults who mentor and parent them. Geared toward African-American children however does not exclude any group of children. Volunteer mentors are recruited, trained, deployed and supported throughout their mentoring tenure.
Nurse Family Partnership		Assistance for pregnant women. Registered nurses provide home visits, referrals, and support to families from pregnancy up until the child turns 2 years old.
Optimist Youth Homes and Family Services		Hours: Monday – Friday, 9:00 am – 5:00 pm. Programs/Services: community outreach, medication support, mental health services (MHS), targeted case management (TCM), full services partnership (FSP).
Palmdale 7th Day Adventist Church Community		The church offers food to Palmdale residents on the 1st and 3rd Thursday of the month. They are able to provide baby formula on most days. If in need of food on an emergency basis, please contact the pastor directly.
Palmdale City Library	Volunteer Opportunities	Live scan and background check is required. When volunteering a time commitment is required. For available opportunities at Library visit website.

ORGANIZATION	PROGRAM	DESCRIPTION
Palmdale Regional Hospital		Services: Rehabilitation, oncology, neurology, surgery, urology, respiratory services, diabetes management, pharmacy, otolaryngology, emergency services, stroke care, weight loss surgery, wound care, cardiology, radiology, gastroenterology, laboratory services, orthopedics.
Palmdale Sheriff's Station	VIDA (Vital Intervention and Directional Alternatives)	16-week program for non-violent, at-risk youth between the ages of 11 and 17½.
	AV CERT (Community Emergency Response Team) Program	Training is designed to cover the following: Disaster Preparedness, Fire Safety, Disaster Medical Operations - Triage and Treating Life Threatening Injuries, Disaster Medical Operations - Assessment, Treatment, and Hygiene, Light Search and Rescue, Team Organization, Disaster Psychology, Terrorism and CERT, Final Exercise. An email is sent to participants about new trainings available. Training is held in various locations throughout the Antelope Valley. To sign up, call (661) 537-2901 and ask to be added to the training email. Please view the online flyer for additional information.
Pathways Community Services		Hours: Monday – Friday, 9:00 am – 5:00 pm. Programs/Services: community outreach, intensive in-home services, medication support, mental health services (MHS), targeted case management (TCM).
Pen or Pencil		A dropout reduction, mentoring, crime prevention and service learning program. No cost.
Penny Lane Centers		Hours: Monday – Thursday, 8:00 am – 8:00 pm; Friday, 8:00 am – 6:00 pm. For services: CSW can refer or caregiver can call to schedule intake. Minute order is needed. Programs/Services: 0-5 mental health services, CalWORKS, community outreach, dual diagnosis, medication support, mental health services (MHS), psychological testing, specialized foster care, therapeutic behavioral services (TBS), wraparound services, school-based services, juvenile justice.
	Transitional Age Youth (TAY) Drop-in Center (The Yellow Submarine)	The drop-in center provides a safe space for youth. The center offers: hygiene products, showers, food, bus passes, hot meals and laundry services during hours of operation to meet basic needs. Also has a case manager on-site to assist with linkage to services such as mental health, employment, housing, etc. Center hours: Tuesday – Friday, 1:00 pm - 7:00 pm; Saturday, 8:00 am - 8:00 pm. Hours for hot meals: Tuesday – Friday hot dinner is served from 5:00 pm - 6:00 pm. On Saturdays breakfast is served from 8:00 am - 11:00 am, lunch 1:00 - 2:00 pm and dinner from 5:00 pm - 6:00 pm.
	Domestic Violence Education and Support Group	Meets every Thursday 10:00 am – 11:30 am. Free childcare may be provided.
	Parenting Class at Court Yard Lancaster	16-week parenting classes program for pregnant/parenting youth. Child care provided during class.
	Nurturing Parenting Program	16-week court-approved parenting classes. Addresses: positive ways to handle anger and stress; building empathy and self-worth in your child; and alternatives to spanking. Free childcare will be provided to those admitted into the class, limited space available. Refreshments and snacks will be provided during class. Class meets weekly on Wednesdays (English class from 9:30 am – 11:30 am, Spanish class from 1:00 pm – 3:00 pm).

# Organization & Program Descriptions

ORGANIZATION	PROGRAM	DESCRIPTION
Personal Involvement Center, Inc.		Hours: Monday – Friday, 8:00 am – 5:00 pm. Contact provider for intake. Medi-Cal accepted. Programs/Services: targeted case management, mental health services (MHS), medication support, crisis intervention, wraparound services.
Planned Parenthood		Abortion Referrals, Birth Control, HIV Testing, Men's Health Care, Morning-After Pill (Emergency Contraception), Pregnancy Testing & Services, STD Testing, Treatment & Vaccines and Women's Health Care. Services are provided with or without health insurance coverage. Open Monday – Friday, 8:00 am – 5:00 pm; Saturday, 8:00 am – 4:00 pm.
Probation Department	Independent Living Services for Probation Foster Youth	Services are based on need and availability of funding.
Project Fatherhood		Project Fatherhood is a support group specifically dedicated and open to men (age 16+) who play any kind of father figure role in society.
Saddle Up Therapeutic Riding Stables		Volunteer needs include: Horse Leaders: Must have previous horse experience and be at least 15 years old. Leaders must be very calm and enjoy being around horses. Must be able to walk for up to an hour. Some running may be involved if a team is trotting a horse. Sidewalkers: No previous experience required. Must be at least 15 years old and able to walk for up to an hour. Stable Hands: Given the nature of horses, there is always a need to clean the stalls, tack and groom the horses. Saddle Up would like to have a consistent time commitment. Available times Tuesday, Wednesday, Friday, 2:00 pm – 5:00 pm; Saturday, 8:00 am – 12:00 pm.
The Salvation Army	Emergency Shelter	
	The Way In	69-bed program. Programs provide a variety of supportive services and aim to assist individuals in becoming self-sufficient and securing permanent housing. Program services consist of: case management, life skills instruction, employment preparation, referrals to educational programs, group and individual counseling, medical referrals, social and recreational activities. Services assist unaccompanied transitional aged youth develop life skills, increase income, save money, become self-sufficient and transition into permanent housing.
		Offers hot meals and shower program. If the person has a valid picture ID, they are encouraged to bring it but it is not required. This location offers hot meals on Mon, Tue, Wed, and Fri. Lunch is offered from 11:00 am – 12:00 pm and dinner from 3:00 – 4:00 pm.
San Joaquin Valley College		Medical & Dental: Medical Assistant, Medical Office, Pharmacy Technology. Technical & Industrial: Heating, Ventilation, Air Conditioning & Refrigeration. Business & Criminal Justice: Business Administration, Criminal Justice: Corrections.
SAVES (South Antelope Valley Emergency Services)		SAVES helps sustain the lives of thousands of people by assisting them with nutritious food, education and referrals in cooperation with other agencies. Hours: Monday - Thursday, 9:00 am – 6:00 pm. Must complete an application and orientation.

ORGANIZATION	PROGRAM	DESCRIPTION
	Discounted transportation coupon	The Transportation Assistance Program provides transportation for medical appointments, food shopping and job interviews. Qualified clients can receive up to two bus passes per adult in a household that does not own a car, and four bus passes per senior, issued every 30 days. This program is offered in collaboration with the International Institute of Los Angeles's Immediate Needs Transportation Program. Service Hours: Monday – Thursday 9:00 am - 12:00 pm and 1:00 pm - 4:00 pm, closed Friday.
	Food Programs	Provides emergency food to people who are homeless and/or undocumented. People who are currently receiving CalWORKS, CalFresh or General Relief are NOT eligible to receive assistance. They provide food to last a family a week (depending on the size of the family). They also provide hotel vouchers to families with children crisis situations. The agency gives holiday baskets and back to school materials. Hours: Monday – Thursday, 9:00 am – 12:00 pm and 1:00 – 4:00 pm.
Sierra Urgent Care		Medical services available at both locations: Disease Management, Family Practice, Internal Medicine, Lab Draw, Patient Services, Pediatrics, Preventative Care, Women's Health and X-Ray. 10th Street West Hours: Monday – Friday, 8:00 am – 8:00 pm; Saturday – Sunday, 9:00 am – 5:00 pm. Trade Center Drive Walk-in Clinic Hours: 8:00 am – 9:00 pm, 7 days a week, 365 days a year.
South Valley Work Source Center		Hours: Monday – Friday, 8:30 am - 4:30 pm (open until 6:30 pm on Wednesday); 3rd Saturday, 9:00 am - 1:00 pm.
St. Vincent de Paul Lancaster		The program consist of receiving food at the home every 6 to 8 weeks, participating in prayer, and check-ins. They also offer free hair cuts, and offer emergency food and clothing to members of the community that are experiencing homelessness once a week. When available they provide hygiene items. Hours: Free haircuts on Monday mornings from 8:30 am – 11:30 am. Hot breakfast on Mondays, Tuesdays, Wednesdays and Saturdays from 9:00 am – 9:30 am.
Student Transportation of America		North America's safest independent provider of school bus transportation services.
Summit Urgent Care		Services: Urgent care that treats the most common illnesses, injuries, physicals and vaccinations, acute non-emergency medical problems. Hours: 8:00 am – 8:00 pm, 7 days per week.
Sylvan Learning Center	AVUHSD SES Off Site Tutoring	Offers K-12 and test prep assistance. AVUHSD Fees: 20 hours free for students approved by AVUHSD, or \$48 an hour for k-8 students/standard enrollment. Tutoring Hours: Monday - Friday 3:30 pm - 6:30 pm, Saturday 9:30 am - 12:30 pm. Additional AVUHSD Partnership Information: No cap on approvals; Applications are generally dispersed during September and October via school flyer; Math, Reading and SAT Prep available; iPad and in person service provided.
Tarzana Treatment Center	Mental Health Services	Hours: Monday – Friday, 8:00 am – 5:00 pm. Speak to intake department for services. Various insurances are accepted. Medi-Cal is accepted. Programs/Services: Mental health services (MHS), crisis intervention, community outreach services, support services, targeted case management (TCM), individual and group services, relapse prevention and education, family participation, drug testing.

# Organization & Program Descriptions

ORGANIZATION	PROGRAM	DESCRIPTION
	Substance Treatment	Programs/Services: substance abuse assessments, inpatient drug and alcohol treatment (medical detox and psychiatric services), residential drug and alcohol treatment (adult, youth, women and children), outpatient drug and alcohol treatment (intensive outpatient program, adult and youth services, mental health counseling), day treatment/partial hospitalization (adult, youth, women and children), supportive housing (sober living and transitional housing), family medical care, court referred programs (drug diversion and drug court), community education services, and drug testing.
	We Exist Program	We Exist is a new LA County Department of Mental Health (DMH) funded program dedicated to expanding access and improving services for LGBTQ2I2-S transition age youth (TAY) and their families/caregivers. Free services for all individuals ages 16-25, including peer support groups, family/caregiver support groups, and referrals.
	Antelope Valley – Family Medical Clinic	Services: Primary Medical Care.
Tessie Cleveland Community Services		Hours: Monday – Friday, 8:00 am - 5:00 pm. For outpatient services – only Tuesday or Friday – first come, first served – recommended to be there at 8:00 am. Only 8 people accepted per day. Caregiver must bring ID, minute order, Medi-Cal card, placement paperwork, and child. Programs/Services: targeted case management (TCM), mental health services (MHS), medication support, crisis intervention, field based therapy, wraparound services, full services partnership (FSP).
United Methodist Church		Only offers hot lunches on Mondays and Thursdays at noon.
University of Antelope Valley		Master Degree Programs: Master's in Business Administration (MBA), Master's in Criminal Justice, Master's in Education. Certificate Programs: Culinary Arts & Restaurant Management, Emergency Medical Technician (EMT), Massage Therapy, Medical Assistant, Medical Billing & Coding, Paramedic, Pharmacy Technician, Professional Baking & Pastry, Vocational Nursing. Bachelor Degree Programs: Business Management, Communication Studies, Criminal Justice, Electrical Engineering, Health Fitness Specialist, Healthcare Management, Hospitality Management, Nursing (RN to BSN), Psychology, Sports Management. Online Programs: Master's in Business Administration (MBA), Master's in Criminal Justice, Bachelor's in Business Management, Bachelor's in Criminal Justice, Nursing (RN to BSN), Associate of Allied Health, Associate of Business Management, Associate of Paramedic Science, Medical Billing & Coding. Associate Degree Programs: Allied Health, Business Management, Fire Science, Healthcare Management, Hospitality Management, Paramedic Science.

ORGANIZATION	PROGRAM	DESCRIPTION
University of Phoenix		Program levels range from associates degree to doctoral degrees in various fields such as: Business, Communication, Criminal Justice, Education, Healthcare, Human Resources, Nursing Sciences, Technology. Classes are offered on campus and online.
Valley Oasis		Services include: a shelter, DVHF (Domestic Violence Housing First), thrift store, CalWORKs assistance (case management, legal services), Kayla's Place for Children, sexual assault response services, and a hotline.
VIP Family Care		Services: Pediatric Care, Geriatric Care, Family Practice Care, X-ray Scanning, Echocardiogram Testing, Bone Density Screening, Cardiac Treadmill Stress Testing, Preventative Cardiovascular Care, Health & Diabetes, Women's Healthcare & Weight Management, Ultrasound Screening, Lab & Bloodwork: Cholesterol & Triglyceride Profiles, Urinalysis, Hemoglobin. Hours : Monday – Friday, 8:00 am – 6:00 pm.
Western Pacific Medical Corp – Lancaster		The mission of Western Pacific Med Corp is to provide evidence based narcotic treatment services to any eligible person seeking them. These services shall be provided in a cost effective, high quality, humane, culturally sensitive, and non-discriminatory manner.
Women, Infants and Children (WIC) Supplemental Nutrition Program – Antelope Valley		Nutrition education, breastfeeding support, referrals and vouchers for healthy foods to families that meet the income guidelines, for children 0-5 years old.
Wraparound Services	California Mentor, Children's Bureau, Child and Family Guidance Center, Hathaway Sycamores, Masada Homes, Penny Lane Centers, Personal Involvement Center, Tarzana Treatment Center, Tessie Cleveland Community Services	There are currently nine agencies in the Antelope Valley providing Wrap services. Services include therapy, referral and psychiatry. The team provides services in the home that are structured around the needs of the family. Youth must have an open DCFS case or been placed on either formal or information. Children may also be receiving services through post-adoptive services. Post-adoptive services are up 18 months and for youth in the juvenile system 12 months, unless they have a DCFS open case. Referrals are made by the CSW, probation officer, treating therapist, or by a Wrap team who is already providing services to another youth in the home. Services are billed to Medi-Cal.





# Services

# Basic Needs



## Food Resources

### Desert Winds Church

The church offers hot meals every Tuesday from 6:00 pm – 7:00 pm.

### Grace Resource Center

The food pantry is open on Tuesdays and Thursdays at 10:00 am and 1:00 pm. It is important to be on time and to bring ID. They have gently used closed, diapers, wipes, and formula available at times. They offer volunteer and community hours to youth. The center also offers hot meals three days a week, Sunday at 1:30 pm, Wednesday at 9:00 am, 12:00 pm, 5:30 pm, and on Friday at 6:00 pm.

### Great Commission Worship Center

Free food is given away every 2nd and 4th Friday of the month from 9:00 am – 2:00 pm.

### Helping Hands Feeding Children

Please bring empty bags to pick up food. They offer monthly community activities such as ice cream socials, need to call to inquire what is going on throughout the month. They offer clothing, and school supplies when available. The pantry is open every 2nd and 4th Saturday of the month from 10:00 am – 11:00 am. They also provide food on an emergency basis from Tuesday – Friday, 9:00 am – 11:00 am.

### Los Angeles County Department of Public Social Services

Open to the public Monday – Friday, 8:00 am – 5:00 pm.

### Palmdale 7th Day Adventist Church Community

The church offers food to Palmdale residents on the 1st and 3rd Thursday of the month. They are able to provide baby formula on most days. If in need of food on an emergency basis, please contact the pastor directly.

Please bring a verification of residence and a valid ID.

### Penny Lane Centers

The center offers snacks and hot meals. They offer laundry services, showers, case management, linkages, transportation assistance and access to internet and computers.

Hot dinner is served on Tuesdays, Wednesdays, Thursdays, Fridays from 4:00 pm – 6:00 pm. On Saturdays breakfast is served from 8:00 am – 11:00 am, lunch 1:00 – 2:00 pm and dinner from 5:00 pm – 8:00 pm.

Eligibility: Youth between the age of 16 – 25.

### Salvation Army

Offers hot meals and shower program. If the person has a valid picture ID, they are encouraged to bring it but it is not required. This location offers hot meals on Mon, Tue, Wed, and Fri. Lunch is offered from 11:00 am – 12:00 pm and dinner from 3:00 – 4:00 pm.

### SAVES (South Antelope Valley Emergency Services)

Provides emergency food to people who are homeless and/or undocumented. People who are currently receiving CalWORKs, CalFresh or General Relief are NOT eligible to receive assistance.

# Basic Needs

They provide food to last a family a week (depending on the size of the family). They also provide hotel vouchers to families with children crisis situations. The agency gives holiday baskets and back to school materials.

Hours: Monday – Thursday, 9:00 am – 12:00 pm and 1:00 – 4:00 pm.

Must provide an ID, social security card, and proof of residency.

## St. Vincent de Paul Lancaster

The program consist of receiving food at the home every 6 to 8 weeks, participating in prayer, and check-ins. They also offer free hair cuts, and offer emergency food and clothing to members of the community that are experiencing homelessness once a week. When available they provide hygiene items.

Hours: Free haircuts on Monday mornings from 8:30 am – 11:30 am. Hot breakfast on Mondays, Tuesdays, Wednesdays and Saturdays from 9:00 am – 9:30 am.

Eligibility: Offers a food program for residences of Lancaster or Quartz Hill only, who have children in the home under the age of 18. In addition, they offer a food program for elderly individuals who live in the Lancaster and Quartz Hill area.

## United Methodist Church

Only offers hot lunches on Mondays and Thursdays at noon.

## Transportation

*For transportation needs to and from school for students in foster care, please contact the student's Children's Social Worker (CSW) and/or youth.education.support@dcsf.lacounty.gov.*

*For transportation needs to and from school for students experiencing homelessness/housing instability, please contact the McKinney Vento liaison at the student's respective school district.*

## Access

Service is provided within 3/4 mile on either side of a fixed route bus or rail line. Access Paratransit operates seven days a week, 24 hours of the day in most areas of Los Angeles County. It is a shared ride service that is curb-to-curb and utilizes a fleet of small buses, mini-vans and taxis. Fares are distance-based and range from \$2.75 to \$3.50 for each one-way trip.

Beyond the Curb service (pick up at different location) available to those who are eligible.

Access customers are eligible for the Free Fare program, so they can ride most bus and rail systems within Los Angeles County, including Metrolink, for free. Just present the green Access Rider ID Card as fare when you board. You don't have to register, and using the Free Fare program does not affect your eligibility for Access paratransit.

Eligibility: Participants must apply and qualify for this service. Visit the website to begin the application process.

## Antelope Valley Transit Authority

Fares: One way trip (full: \$1.50, reduced: 0.75); 4-hour pass (full: \$2, reduced: \$1); day pass (full: \$5, reduced: \$2.50); weekly pass (full: \$15, reduced: \$7.50); 31 day pass (full: \$50, reduced: \$25).

Local Transit Hours: Monday through Friday from 5:00 am to 12:45 am, Saturday from 6:00 am to 11:45 pm, and Sunday from 6:30 am to 8:45 pm.

Visit the website for the local transit service map, AVTA schedules and routes.

Eligibility: Reduced tap cards are available for K-12 students and college/vocational students. Follow the instructions online to apply. Senior/Disabled Passengers must have a Senior/Disabled TAP photo I.D. card to qualify for a reduced fare.

## HopSkipDrive

Fares vary depending on trip. Carpool is available for lower cost. Check estimate of cost online. Rides are available for various things, such as to and from school, sport events, and activities.

## LogistiCare

LogistiCare manages and arranges for non-emergency medical transportation only.

To arrange transportation: utilize the Reservation phone number that corresponds to the member's insurance.

To activate a will call return ride or to inquire about the ETA of a pick-up: utilize the Where's My Ride (WMR) number that corresponds to the member's insurance.

Medical Transportation services are available Monday – Friday, 7:00 am – 7:00 pm.

## SAVES (offers coupon for discounted transportation)

The Transportation Assistance Program provides transportation for medical appointments, food shopping and job interviews. Qualified clients can receive up to two bus passes per adult in a household that does not own a car, and four bus passes per senior, issued every 30 days. This program is offered in collaboration with the International Institute of Los Angeles's Immediate Needs Transportation Program.

Service Hours: Monday – Thursday 9:00 am - 12:00 pm and 1:00 pm - 4:00 pm, closed Friday.

This program is available for qualifying youth. They will need to have a TAP card and will need to bring proof of income.

## Student Transportation of America

Only take referrals from the Regional Center.

Eligibility: Transports adults 18+ that have an intellectual disability.

# Child Welfare Services



## Antelope Valley College

### Foster & Kinship Care Education

Office Hours (as of fall 2018): Monday – Friday, 8:00 am – noon.

## CASA of Los Angeles County

CASA can take referrals from outside parties or anyone who knows a youth and thinks they could benefit. To refer a youth for a CASA, do one of the following: (a) drop-in to the office and complete referral in person, (b) call CASA directly, or (c) contact referrals@casala.org.

CASA of LA serves youth from ages 0-21, currently living in Los Angeles County and who have an open dependency case at the Edmund D. Edleman Children's Court or the Alfred J. McCourtney Juvenile Justice Center.

## Children's Advocacy Center

Provides a safe and supportive place where abuse concerns can be explored. Forensic interviews, family advocacy and mental health services.

## Los Angeles County Department of Children and Family Services (DCFS)

Palmdale Regional Office

Lancaster Regional Office

Child Protection Hotline

### Parents in Partnership

Description: Parent Partners will use their experience to help support, educate and empower parents in their efforts to successfully navigate the DCFS system. The program includes: lobby and community outreach, a warm line, parent orientations and parent support groups.

### Cultural Broker Program

The African American Population in LA County is 8% however, DCFS African American caseloads is 24%. In an effort to decrease these numbers DCFS is partnering with the community in many ways, one particular way has been the Volunteer Cultural Broker Program, DCFS is reaching out to the community for help in healing our families. VCB's are advocates, mediators, negotiators, and liaisons that bridge the cultural gap between DCFS and families. The Mission of the Volunteer Cultural Broker (VCB) Program is to empower and advocate for African American children by promoting safety, enhancing effective teaming and engagement and eliminating cultural misunderstandings that lead to disproportionality and disparity for African American children and families.

Eligibility: To become a VCB you must be an African American, fill out an application, submit a resume, be fingerprinted, commit for 1 year and receive training.



# Health & Wellness



## Antelope Valley Hospital

Full service, acute care hospital. Offers the Antelope Valley the only trauma center, pediatric unit, NICU, inpatient mental health care, labor and deliver, accredited chest pain center/STEMI receiving center, advanced primary stroke center and comprehensive community cancer center.

## Palmdale Regional Hospital

Services: Rehabilitation, oncology, neurology, surgery, urology, respiratory services, diabetes management, pharmacy, otolaryngology, emergency services, stroke care, weight loss surgery, wound care, cardiology, radiology, gastroenterology, laboratory services, orthopedics.

## Bartz-Altadonna Community Health Center

Nonprofit patient centered trauma informed primary care services. Services: primary care, HIV, hepatitis C, women's health, reproductive health and family planning, OB/GYN, pediatrics, psychiatry, counseling, one day intensive grief and loss workshops, art therapy, alcohol and drug dependency, medically assisted treatment and parenting.

Health Center Hours: Monday – Friday, 7:30 am - 6:30 pm; Saturday, 9:00 am - 6:00 pm.

Office Hours: Monday – Friday, 8:00am - 5:00pm.

## Antelope Valley Community Clinic

Provides services for physical, mental and oral health care needs. Medi-Cal, Medi-Cal HMO & other commercial plans are accepted. For those without insurance, fees are based on income. AVCC is a Federally Qualified Health Center (FQHC) and your Patient-Centered Medical Home (PCMH).

Services: Primary care, dental services, mental health, pediatrics, urgent care, patient center medical home, Lancaster adult day health care, detox services.

## Antelope Valley Community Clinic

### Lancaster location

Services: Primary Care, Mental Health, Psychiatry, Podiatry, Endocrinology and Cardiology.

Hours of Operation: Monday through Friday, 7:30 am – 5:00 pm (extended hours Tuesday and Thursday until 6:30 pm based on availability).

Lab Hours: Monday – Friday, 7:30 am – 3:30 pm.

Dental Clinic Hours of Operation: Monday – Friday, 7:30am – 5:30 pm.

Urgent Care/Walk-in clinic is for conditions that require prompt attention, but do not pose an immediate, serious threat to your health or life. Hours of Operation: Open every day 7:30 am – 8:00 pm.

# Health & Wellness

## Palmdale location

Services: Primary Care, Mental Health, Psychiatry.

Hours of Operation: Monday – Friday, 7:30 am – 5:00 pm; Saturday, 8:00 am – 8:00 pm.

## Palmdale location

Services: Primary Care, Mental Health, Psychiatry.

Hours of Operation: Monday through Friday, 7:30 am – 5:00 pm (extended hours Wednesday until 8:00 pm).

Lab Hours: Monday – Friday, 7:30 am – 3:30 pm.

Dental Clinic Hours of Operation: Monday – Friday, 7:30am – 5:00 pm.

## Tarzana Treatment Center

### Antelope Valley – Family Medical Clinic

Services: Primary Medical Care.

## Little Rock Community Clinic

Services: Primary care services to patients in the community of Littlerock and surrounding areas.

Hours: Tuesday and Thursday, 8:00 am - 4:30 pm.

## Sierra Urgent Care

Medical services available at both locations: Disease Management, Family Practice, Internal Medicine, Lab Draw, Patient Services, Pediatrics, Preventative Care, Women's Health and X-Ray.

10th Street West Hours: Monday – Friday, 8:00 am – 8:00 pm; Saturday – Sunday, 9:00 am – 5:00 pm.

Trade Center Drive Walk-in Clinic Hours: 8:00 am – 9:00 pm, 7 days a week, 365 days a year.

## Kaiser

### Palmdale Medical Offices

Services: Pharmacy. No emergency care, no after hours, no urgent care.

### Lancaster Medical Offices

Services: Pharmacy, urgent care. No emergency care, no after hours.

### Antelope Valley Medical Offices

Services: Pharmacy. No emergency care, no after hours, no urgent care.

## High Desert Medical Group

Services: 24 hour nurse advice line, primary care provider, specialty services, urgent care. Medi-Cal is accepted if the following the patient is a member of the following plan: HealthNet, HealthNet Expansion, LA Care, or LA Care Expansion.

## VIP Family Care

Services: Pediatric Care, Geriatric Care, Family Practice Care, X-ray Scanning, Echocardiogram Testing, Bone Density Screening, Cardiac Treadmill Stress Testing, Preventative Cardiovascular Care, Health & Diabetes, Women's Healthcare & Weight Management, Ultrasound Screening, Lab & Bloodwork: Cholesterol & Triglyceride Profiles, Urinalysis, Hemoglobin.

Hours : Monday – Friday, 8:00 am – 6:00 pm.

## Clinica mi Pueblo

No appointment necessary. Services include: General medicine consultation, specialty consultation, laboratory, pharmacy, diagnostic studies.

Hours: Monday – Friday, 9:00 am – 6:00 pm; Saturday, 9:00 am – 3:00 pm. Last patient received 15 minutes prior to closing.

## Family First Family Medical Practice

Services: Pediatrics, geriatrics, men and women's health, professional medical exams.

Patients are accepted with and without insurance.

Hours: Monday – Friday, 8:00 am – 5:00 pm.

## Family Urgent Care and Industrial Medical

Services: family practice, urgent care, orthopedic injuries, stem cell treatment.

Hours: Monday – Friday, 9:00 am – 6:00 pm.

## Summit Urgent Care

Services: Urgent care that treats the most common illnesses, injuries, physicals and vaccinations, acute non-emergency medical problems.

Hours: 8:00 am – 8:00 pm, 7 days per week.

## East West Urgent Care

Services: Urgent care services to treat common illnesses and injuries, sports and primary physicals, on site labs, vaccinations and immunizations.

Hours: Monday – Friday, 9:00 am – 7:00 pm and Saturday, 10:00 am – 3:00 pm.

## Clinica Medica Mi Familia

Services: physical exams, x-rays, ultrasound, TB test, CT scans, urgent care, and orthopedic medicine.

## Penny Lane Centers

### Domestic Violence Education and Support Group

Meets every Thursday 10:00 am – 11:30 am. Free childcare may be provided.

# Housing



## Mental Health America

Hours: 9:00 am - 4:30 pm

## Salvation Army

### Emergency Shelter

#### The Way In

69-bed program. Programs provide a variety of supportive services and aim to assist individuals in becoming self-sufficient and securing permanent housing.

Program services consist of: case management, life skills instruction, employment preparation, referrals to educational programs, group and individual counseling, medical referrals, social and recreational activities.

Services assist unaccompanied transitional aged youth develop life skills, increase income, save money, become self-sufficient and transition into permanent housing.

Eligibility: Youth ages 18-24 experiencing homelessness or housing instability.

## Valley Oasis

Services include: a shelter, DVHF (Domestic Violence Housing First), thrift store, CalWORKs assistance (case management, legal services), Kayla's Place for Children, sexual assault response services, and a hotline.

# Law Enforcement Programs



## Lancaster Sheriff's Station

### VIDA (Vital Intervention and Directional Alternatives)

Vital Intervention and Directional Alternatives (VIDA) is a structured 16-week program for non-violent, at-risk youth between the ages of 11 and 17½. Complete the online form to begin the process. Youth completes intake interview with trained VIDA staff members. During the interview, the applicant's risk level is assessed to determine if the youth meets the program's criteria. Participation includes home visits and school visits, mid-week and Saturday meetings. Caregiver participation is required at some of the meetings. \$75 fee to participate in this program.

Eligibility: Non-violent, at-risk youth between the ages of 11 and 17½.

## Palmdale Sheriff's Station

### VIDA (Vital Intervention and Directional Alternatives)

See description above.

Eligibility: Non-violent, at-risk youth between the ages of 11 and 17½.

## Palmdale Sheriff's Station

### AV CERT (Community Emergency Response Team) Program

Training is designed to cover the following: Disaster Preparedness, Fire Safety, Disaster Medical Operations - Triage and Treating Life Threatening Injuries, Disaster Medical Operations - Assessment, Treatment, and Hygiene, Light Search and Rescue, Team Organization, Disaster Psychology, Terrorism and CERT, Final Exercise. An email is sent to participants about new trainings available. Training is held in various locations throughout the Antelope Valley.

To sign up, call (661) 537-2901 and ask to be added to the training email. Please view the online flyer for additional information.

Eligibility: Training is open to ages 16 years and above. An adult needs to accompany minors to any training courses. The adult does not have to be a parent or caregiver. Most training classes are free. Some may have a cost.

# Library Services

## Antelope Valley College

### Library

Youth over the age of 14 are not allowed on the second floor of the library. Youth have access to computer, internet, printing, and support from on campus librarian. Youth can request a non-student card to check out books from the library. The cost is \$10 per school year. Guardian must provide a valid identification card when requesting a card.

Library Hours: Please call to get the most recent schedule, as the library hours change periodically.

## City of Palmdale

### Palmdale City Library

The website can be assessed in Spanish. The website allows to renew rentals online. There is a activity calendar posted on the website. The library offers online tutoring that can be accessed from a home computer.

To apply for a library card go to the library with a caregiver with a valid ID showing the current address, if the address is not current on the ID bring in a utility bill. Foster parents must bring notice from the department saying they are the foster parent for the child. Library Hours: Mon – Thurs, 10:00 am - 8:00 pm; Fri – Sun 10:00 am – 5:00 pm.

## Los Angeles County

### Lancaster Library

The library offers free online live tutoring in both English and Spanish. The tutoring is offered for K-12 students, college students, and adult learners. They also offer online courses through lynda.com. They offer a calendar at the site for the activities that are happening throughout the month.

This is a Los Angeles County library so if the student has previously been issued a library card through a Los Angeles County Library they can use that card, to replace a card the charge is \$3. To apply for a new card an application must be filled out and brought with the guardian to the library with a valid identification card. Cards are issued the same day and ready to use.

Library Hours: Mon – Wed, 10:00 am - 8:00 pm; Thurs – Sat, 9:00 am - 5:00 pm; Sun, 1:00 pm - 5:00 pm.

### Little Rock Library

The website gives a calendar of the activities that offered at the library throughout the month. The library offers free online live tutoring in both English and Spanish. The tutoring is offered for K-12 students, college students, and adult learners. They also offer online courses through lynda.com.

This is a Los Angeles County library so if the student has previously been issued a library card through a Los Angeles County Library they can use that card, to replace a card the charge is \$3. To apply for a new card an application must be filled out and brought with



the guardian to the library with a valid identification card. Cards are issued the same day and ready to use.

Library Hours: Mon – Tues, 11:00 am - 7:00 pm; Wed – Sat, 9:00 am - 5:00 pm; Sun, closed.

### Quartz Hill Library

The library offers volunteer opportunity for youth. Youth have access to printing and making copies to complete school assignments. The website gives a calendar of the activities that offered at the library throughout the month. The library offers free online live tutoring for both English and Spanish learners. The tutoring is offered for K-12 students, college students, and adult learners. They also offer online courses through lynda.com.

This is a Los Angeles County library so if the student has previously been issued a library card through a Los Angeles County Library they can use that card, to replace a card the charge is \$3. To apply for a new card an application must be filled out and brought with the guardian to the library with a valid identification card. Cards are issued the same day and ready to use.

Library Hours: Mon, 9:00 am – 5:00 pm; Tue – Wed, 10:00 am – 8:00 pm; Thu – Sat, 9:00 am – 5:00 pm; Sun, closed.

# Mental Health Providers



## Lancaster

### Alafia Mental Health Institute

Hours: Monday - Friday 8:30 am - 5:00 pm.

Contact provider to begin phone intake. Provider may have waiting list. Youth in care will need minute order or DCFS 179 form . Services provided: 0-5 mental health services, crisis intervention, prevention and early intervention (PEI), medication support, mental health services, psychiatry specialized foster care, targeted case management (TCM).

Eligibility: Only Medi-Cal accepted.

### Children's Bureau of Southern California

Mental Health services for ages 5-17. Caregiver needs to call to request service. For youth in foster care placement paperwork and minute order is needed. CSW can provide this information.

Eligibility: Youth ages 5 to 17. Only Medi-Cal accepted.

### Children's Center of Antelope Valley

Hours: Monday – Friday 8:00 am – 6:00 pm (including for walk-ins). Medical and PPO insurance accepted. Referral form can be completed or caregiver could call to request services.

Programs/Services: 0-5 mental health services, community outreach, crisis intervention medication support, mental health services (MHS), prevention and early intervention (PEI) specialized foster care, therapeutic behavioral services (TBS).

### Hathaway Sycamores Child And Family Services

Hours: Monday – Friday 8:30 am - 5:00 pm.

Programs/Services: 0-5 mental health services community outreach services, wraparound, TAY FSP, intensive field capable clinical services (IFCCS), co-occurring disorders, prevention and early intervention (PEI), medication support mental health services (MHS), psychological testing, therapeutic behavioral services (TBS).

Eligibility: Medi-Cal Only. Will need minute order.

### Kaiser Permanente Behavioral Health

Hours: Monday – Friday, 8:30 am - 5:00 pm.

Services: Behavioral health services. No emergency care, no pharmacy, no after hours, no urgent care.

### Masada Homes

Hours: Monday – Friday, 8:30 am - 5:30 pm.

Programs/Services: 0-5 mental health services, community outreach prevention and early intervention (PEI), medication support, psychiatry services, school-based services, targeted case management (TCM), full service partnership (FSP), wraparound services.

Eligibility: Medi-Cal Only. Will need minute order. Provider can contact CSW for required documents.

# Mental Health Providers

## **Pathways Community Services**

Hours: Monday – Friday, 9:00 am – 5:00 pm.

Programs/Services: community outreach, intensive in-home services, medication support, mental health services (MHS), targeted case management (TCM).

Eligibility: Medi-Cal Only. CSW can refer or caregiver can call to start process. Minute Order needed.

## **Penny Lane Centers**

Hours: Monday – Thursday, 8:00 am – 8:00 pm; Friday, 8:00 am – 6:00 pm.

For services: CSW can refer or caregiver can call to schedule intake. Minute order is needed.

Programs/Services: 0-5 mental health services, CalWORKS, community outreach, dual diagnosis, medication support, mental health services (MHS), psychological testing, specialized foster care, therapeutic behavioral services (TBS), wraparound services, school-based services, juvenile justice.

## **Personal Involvement Center, Inc.**

Hours: Monday – Friday, 8:00 am – 5:00 pm.

Contact provider for intake. Medi-Cal accepted.

Programs/Services: targeted case management, mental health services (MHS), medication support, crisis intervention, wraparound services.

## **Tarzana Treatment Center**

Hours: Monday – Friday, 8:00 am – 5:00 pm.

Speak to intake department for services. Various insurances are accepted. Medi-Cal is accepted.

Programs/Services: Mental health services (MHS), crisis intervention, community outreach services, support services, targeted case management (TCM), individual and group services, relapse prevention and education, family participation, drug testing.

## **Palmdale**

### **Antelope Valley Kidz Connection**

Medi-Cal accepted. To access services, CSW needs to speak with Service Linkage Special (SLS) within DCFS office to make referral. This is the only way to obtain services at this location.

Services: 0-5 Mental Health Services, Mental Health Services, Psychological Testing, Specialized Foster Care, Targeted Case Management (TCM).

Eligibility: Services for children and Transition Aged Youth (TAY).

### **Child and Family Guidance Center**

Programs/Services: crisis intervention, field capable clinical services (FCCS), medication support, mental health services (MHS), psychological testing, specialized foster care, targeted case management (TCM), therapeutic behavioral services (TBS), wraparound services, full service partnership (FSP).

Contact provider to begin phone intake. Youth in care will need minute order or DCFS 179 form. CSW also refer to services. Only Medi-Cal accepted.

## **Children's Bureau of Southern California**

Caregiver needs to call to request service. For youth in foster care placement paperwork and minute order is needed. CSW can provide this information.

Eligibility: Ages 5-17. Only Medi-Cal accepted.

## **Optimist Youth Homes-Palmdale**

Hours: Monday – Friday, 9:00 am – 5:00 pm.

Programs/Services: community outreach, medication support, mental health services (MHS), targeted case management (TCM), full services partnership (FSP).

Eligibility: Medi-Cal Only. For services, caregiver needs to complete referral form. Minute Order is needed.

## **Tessie Cleveland Community Services**

Hours: Monday – Friday, 8:00 am - 5:00 pm.

For outpatient services – only Tuesday or Friday – first come, first served – recommended to be there at 8:00 am. Only 8 people accepted per day.

Caregiver must bring ID, minute order, Medi-Cal card, placement paperwork, and child.

Programs/Services: targeted case management (TCM), mental health services (MHS), medication support, crisis intervention, field based therapy, wraparound services, full services partnership (FSP).

Eligibility: Medi-Cal only.

## **Wraparound Services**

- California Mentor, Children's Bureau
- Child and Family Guidance Center
- Hathaway Sycamores
- Masada Homes
- Penny Lane Centers
- Personal Involvement Center
- Tarzana Treatment Center
- Tessie Cleveland Community Services

There are currently nine agencies in the Antelope Valley providing Wrap services. Services include therapy, referral to psychiatry. The team provides services in the home that are structured around the needs of the family. Youth must have an open DCFS case or been placed on either formal or information. Children may also be receiving services through post-adoptive services. Post-adoptive services are up 18 months and for youth in the juvenile system 12 months, unless they have a DCFS open case. Referrals are made by the CSW, probation officer, treating therapist, or by a Wrap team who is already providing services to another youth in the home. Services are billed to Medi-Cal.

# Mentorship Programs

## Antelope Valley College

### STAR Mentoring Program

STAR (Student Transfer and Academic Retention) is a Federal Student Support Services program. It's designed to identify promising students and provide instructional support services above and beyond what is currently being offered. No cost.

Services include: Academic, goal setting and career counseling; progress monitoring and personal support through regular meetings; a limited amount of supplemental grant aid scholarships; cultural enrichment activities; peer/faculty mentoring; priority registration; 4-year college visits and transfer assistance; study skills, supplemental instruction and tutoring; computer literacy and research skills; Summer Bridge program; academic enrichment class; financial aid and scholarship application assistance. Transportation provided for off-site four year campus visits. No cost.

Eligibility: STAR Application must be submitted before the conclusion of the first week of Fall/Spring Semester. Only Accepts 170 students per year including those already receiving service, however youth in care are given some priority over other applicants. Accepts incoming college freshmen. Must be a full-time student (+12 credits) to qualify, (+9 credits) for OSD.

### EOPS & CARE

Extended Opportunity Programs and Services (EOPS) is a California Community College program to assist educationally disadvantaged students with financial need who want to attend college. The Antelope Valley College EOPS program receives state and district funds to recruit, enroll, and support these students that may not otherwise seek higher education. One-on-one counseling, early registration, tutoring, grants, campus visits and clerical services are provided. No cost.

Eligibility: There are six basic requirements that must be met when determining eligibility for EOPS: financial need, unmet need, full-time student status, California resident, non-college graduate, and educational disadvantage.

### Guardian Scholars Foster Youth

The Guardian Scholars Program aims to connect current and former foster youth with a support system to help develop the tools needed to succeed in, through, and beyond college.

AVC Guardian Scholars works to: encourage students to participate in interesting and/or beneficial activities, events, or programs; support students concerning academic, personal, mental, and/or emotional well-being; provide enriching activities and create a scholarly community that supports success. No cost.

Eligibility: Current and former youth in foster care.

## Antelope Valley Health Partners

### United We Mentor

This is a mentorship program that helps empower youth in the AV to make positive life choices through the use of group mentoring sessions and workshops. Workshops consist of guided group activities that encourage laughter, fun and getting to know each other. Mentees practice communication skills, conflict resolution, life skills and best practices to build self-confidence. No cost.

Note: they are no longer providing service due to a lack of funding, however they plan to re-extend service when funding permits.

Eligibility: Mentoring for youth ages 7-17. Mentors must be age 18 and up and must commit to 1 year.

## AVUHSD

### Link Crew

Link Crew is a freshman transition program that welcomes incoming freshmen and makes them feel comfortable and supported throughout the first year of their high school experience. Link Crew trains incoming juniors and seniors to support and be positive role models for incoming 9th graders.

Eligibility: Enrolled at a school in the Antelope Valley Union High School District.

## Boys and Girls Club AV

### Foster Friends

Mentors youth in care through SELF model (strength, endurance, love, and friendship). Participants come together with other youth in care and have a platform to discuss positive/negative experiences with peers, goal set and engage in fun activities. Meets twice a week. Cost is \$25 a calendar year, provides admittance to all BGCAV programs.

Eligibility: Current and former youth in foster care.

## Pen or Pencil

A dropout reduction, mentoring, crime prevention and service learning program. No cost.



# Postsecondary

## Antelope Valley College

Fully accredited community college. AVC takes pride in providing a quality, comprehensive education for a wide variety of learners.

## Barnes Aviation

Barnes Aviation is a full service FBO conveniently located in the Antelope Valley at William J. Fox Airport providing flight training, aircraft rental and maintenance.

Programs Offered: Private Pilot Certificate, Commercial Pilot Certificate, Flight Instructor, Tail Wheel Pilot Training, Aerobic Training, Flight Training, Aircraft Rental, Aircraft Maintenance, Oxygen Service, Weather and Flight Planning, Hangar Space, Major Repairs and Aircraft Rebuilding.

## Brandman University

Bachelor's Degree: Applied Studies, Business, Communications, Criminal Justice, Legal, Data Analytics & GIS, Human Resources, Information Technology, Leadership, Psychology & Counseling, Social Work, Sociology, Teaching & Education.

Master's Degree: Business, Data Analytics & GIS, Healthcare, Human Resources, Leadership, Psychology & Counseling, Education Credentials & Authorizations: Leadership, Teaching & Education.

## California State University Bakersfield- Antelope Valley Satellite Campus

8 undergraduate degrees: Business Administration: Accounting, General Business, Management; Child, Adolescent and Family Studies; Criminal Justice; Rn to BSN (online); Sociology: Traditional, Human Services; Liberal Studies: Traditional, IBEST, ISPED; Interdisciplinary Studies; Natural Science Foundation.

6 graduate degrees: Business Administration (MBA), Education Administration (MA), Special Education (MA), Master of Social Work (MSW), Administration (MSA) (online), Curriculum and Instruction (MA) (online); Teaching Credential: Multiple Subject, Single Subject, Special Education.

## Clinical Training Institute

Programs Offered: Phlebotomy Technician, Pharmacy Technician, Medical Biller/Coder, Medical Assistant.

## Contractors State License Schools

California State License Services (CSLS) is the largest school in California devoted to the Construction professional. CSLS helps its students pass the exam to become licensed contractors in the State of California.

Programs Offered: Home Inspection Courses, Estimating for Construction, Blueprint Reading, ICC Certification, EPA – RRP Certification.

## High Desert Medical College

Clinical Medical Assisting, Dental Assisting, Medical Administrative Assisting, Pharmacy Technician, Ultrasound Technician, Vocational Nursing.

## Lancaster Beauty School

Programs Offered: Cosmetology, Barbering, Advance Manicurist, Esthetician, Teacher Training.

## Los Angeles Training Institute for Alcohol & Drug Counseling

Programs Offered: Alcohol and Drug Counselor Certificate Program and continuing education units for counselors.

## San Joaquin Valley College

Medical & Dental: Medical Assistant, Medical Office, Pharmacy Technology.

Technical & Industrial: Heating, Ventilation, Air Conditioning & Refrigeration.

Business & Criminal Justice: Business Administration, Criminal Justice: Corrections.

## University of Antelope Valley

Master Degree Programs: Master's in Business Administration (MBA), Master's in Criminal Justice, Master's in Education.

Certificate Programs: Culinary Arts & Restaurant Management, Emergency Medical Technician (EMT), Massage Therapy, Medical Assistant, Medical Billing & Coding, Paramedic, Pharmacy Technician, Professional Baking & Pastry, Vocational Nursing.

Bachelor Degree Programs: Business Management, Communication Studies, Criminal Justice, Electrical Engineering, Health Fitness Specialist, Healthcare Management, Hospitality Management, Nursing (RN to BSN), Psychology, Sports Management.

Online Programs: Master's in Business Administration (MBA), Master's in Criminal Justice, Bachelor's in Business Management, Bachelor's in Criminal Justice, Nursing (RN to BSN), Associate of Allied Health, Associate of Business Management, Associate of Paramedic Science, Medical Billing & Coding.

Associate Degree Programs: Allied Health, Business Management, Fire Science, Healthcare Management, Hospitality Management, Paramedic Science.

## University of Phoenix

Program levels range from associates degree to doctoral degrees in various fields such as: Business, Communication, Criminal Justice, Education, Healthcare, Human Resources, Nursing Sciences, Technology. Classes are offered on campus and online.

# Pregnant & Parenting Services



## Antelope Valley Health Neighborhood

### Operation Motherhood - Moms Supporting Moms

Meets every Tuesday at 10:00 am. To join or refer someone call: (213) 334-0653. Facilitated by Theion and Michelle.

## Antelope Valley Partners for Health

### Welcome Baby Program

Welcome Baby is a voluntary, universal home visitation program offered at no cost to all mothers giving birth, or planning to give birth at participating hospitals in Los Angeles County. The program includes trained professionals who work with patients on site at the hospitals and in their homes. Registered Nurses, Parent Coaches and Hospital Liaisons provide individual support and information on topics like parenting and early child development, bonding and attachment, and assistance on issues such as basic health care, nutrition, breastfeeding and home safety.

Eligibility: Pregnant and parenting mothers, no age restrictions. Pregnancy must be less than 38 weeks prenatal to enroll or a mother can enroll while bedside at a hospital. The program is available to all families regardless of risk factors or socio-economic status and is voluntary; clients can decline enrollment or discontinue services at any time.

### Lactation Center & Breastfeeding Support Group

Lactation Support Group meets Mondays, 10:00 am - 11:30 am.

## Healthy Families of America

Direct case management and home-visitation services using the Healthy Families America evidence-based model, a prevention program designed to promote positive parenting, enhance child health and development, and prevent child abuse and neglect.

Eligibility: At-risk parents that are pregnant or have a newborn up to 3 months old, families wanting home visitation services. Clients must live in either the Lancaster or Palmdale Best Start Community.

## Bartz-Altadonna Community Health Center

Offers parenting classes, reproductive health and family planning, OB/Gyn, and women's health services.

## Breakthrough Parenting

10-week course, court approved, and participants receive a letter of completion.

## Care Net Women's Resource Center of North County

Provides pregnancy decision/options consultations. Cost-free. Youth are able to schedule and attend appointments on their own. Consultations can include education regarding youth's reproductive and health rights.

No age restrictions. Highly recommended to bring a picture ID (can be school issued ID).

# Pregnant & Parenting Services

## Children's Bureau

### Partnerships for Families

Provides assistance with child care options, housing referrals, parent training, substance abuse services, domestic violence services, parent self-help, income support services, mental health services, vocational development services, and more.

### Black Infant Health Program – Antelope Valley

Provides 10-week parenting classes. Program provides mental health referrals, 1-on-1 services, pre-natal care and post-natal care. Participants learn proven strategies to reduce stress and develop life skills. This is accomplished through a group-based approach with complementary case management. Weekly group sessions help women build social support, access their strengths, make positive choices and set health-promoting goals.

The goal of the BIH Program is to improve African-American infant and maternal health, as well as decrease health and social inequities for women and infants.

Must be age 18+ or an Emancipated youth. To enroll, must be under 30 weeks pregnant. Women can come in person for enrollment or be referred through Kaiser. Community liaisons also visit WIC offices to enroll women who are interested.

## Grace Resources, Inc.

Grace Resources, Inc. is an interdenominational para-church social service agency that adheres to the Christian Faith. GRI, Inc. is not a church nor is it under the authority or direction of any church or denomination. GRI does not mandate any religious beliefs or activities from any client as a requirement for services.

Provides resources for community members. Can provide pregnant and parenting mothers with emergency baby supplies (diapers, wipes and formula every 14 days). Resources available on drop-in basis. Adults not needed for youth to receive supplies. Hours: Monday – Friday, 9:30 am - 4:00 pm.

## Los Angeles County Department of Children and Family Services (DCFS)

### Parents in Partnership

Parent Partners will use their experience to help support, educate and empower parents in their efforts to successfully navigate the DCFS system. The program includes: lobby and community outreach, a warm line, parent orientations and parent support groups.

## Nurse Family Partnership

Assistance for pregnant women. Registered nurses provide home visits, referrals, and support to families from pregnancy up until the child turns 2 years old.

Women must be pregnant for the first time, and be 24 or fewer weeks pregnant. Must meet income requirements. Services available in the AV.

## Penny Lane Centers

### Parenting Class at Court Yard Lancaster

16-week parenting classes program for pregnant/parenting youth. Child care provided during class.

### Nurturing Parenting Program

16-week court-approved parenting classes. Addresses: positive ways to handle anger and stress; building empathy and self-worth in your child; and alternatives to spanking. Free childcare will be provided to those admitted into the class, limited space available. Refreshments and snacks will be provided during class. Class meets weekly on Wednesdays (English class from 9:30 am – 11:30 am, Spanish class from 1:00 pm – 3:00 pm).

## Planned Parenthood

Abortion Referrals, Birth Control, HIV Testing, Men's Health Care, Morning-After Pill (Emergency Contraception), Pregnancy Testing & Services, STD Testing, Treatment & Vaccines and Women's Health Care.

Services are provided with or without health insurance coverage.

Open Monday – Friday, 8:00 am – 5:00 pm; Saturday, 8:00 am – 4:00 pm.

## Project Fatherhood

An evidence based community program that helps fathers learn the tools to participate actively in the rearing and ensuring the well being of their children.

Hours: Children's Bureau Program Location: Tuesdays, 9:00 am - 11:00 am; Optimist Youth Homes & Family Services Location: Thursdays, 3:00 pm - 5:00 pm; Pennylane Centers location: Tuesdays, 4:30 pm - 6:00 pm.

## Women, Infants and Children (WIC) Supplemental Nutrition Program – Antelope Valley

Nutrition education, breastfeeding support, referrals and vouchers for healthy foods to families that meet the income guidelines, for children 0-5 years old.

Eligibility: Women who are pregnant, breastfeeding, or just had a baby. Children under 5 years old (including foster children). Families with low to medium income (working families may qualify).

# Substance Treatment



## American Health Services LLC

Programs/Services: Narcotics replacement therapy, counseling, and suboxone (FDA approved treatment for opioid addiction).

## Change Lanes Youth Support Services

Programs/Services offered: Outpatient drug treatment, NA 12-step offered every Tuesday at 12:30 pm.

## Cycles of Change Recovery Services

Programs/Services: 12-step, bio sound therapy alcohol rehab program, addiction intervention, detox, residential treatment, family therapy, outpatient program and extended care.

Eligibility: This program serves adults only, does not accept Medi-Cal and has no waitlist because it is privately owned. If their Palmdale location is full, you can access services in the Valley area.

## Design for Change Recovery Services

Holistic rehab center.

## Tarzana Treatment Center

Programs/Services: substance abuse assessments, inpatient drug and alcohol treatment (medical detox and psychiatric services), residential drug and alcohol treatment (adult, youth, women and children), outpatient drug and alcohol treatment (intensive outpatient program, adult and youth services, mental health counseling), day treatment/partial hospitalization (adult, youth, women and children), supportive housing (sober living and transitional housing), family medical care, court referred programs (drug diversion and drug court), community education services, and drug testing.

## Western Pacific Medical Corp – Lancaster

The mission of Western Pacific Med Corp is to provide evidence based narcotic treatment services to any eligible person seeking them. These services shall be provided in a cost effective, high quality, humane, culturally sensitive, and non-discriminatory manner.

# Tutoring Services

Please note that this is not a comprehensive list of school site tutoring in the region. The sites listed below are those that have formal partnerships with the National Center for Youth Law. Visit the district's website for a more comprehensive list of services.

## Antelope Valley College

### Learning Center: General Tutoring

Offers free subject tutoring, test preparation workshops and orientations for the Learning Center format. Students are limited to a maximum of two hours of tutoring each week. They are limited to one hour in one subject and an additional hour in a second subject. The two-hour limit does not include services that are provided in other programs in the Learning Center.

Appointments usually aren't filled on the same day the appointment is requested. Links to Reading Center, Math Center, Writing Center and other support services can be found online. EOPS, STAR and Guardian Scholars also extend tutoring services to those enrolled in their programs; more information can be found under the mentorship tab on their website.

## Antelope Valley Union High School District

### Palmdale High School

Tutoring services provided in the library, Monday – Friday (except Wednesday), 2:45 pm - 3:45 pm.

### Eastside High School

Tutoring services provided in the library, Monday, Tuesday, Thursday, 3:01 pm - 4:01 pm.

### Lancaster High School

Tutoring services provided in the library, Monday, Tuesday, Wednesday, Thursday, 2:45 pm - 3:45pm (select Wednesdays from 1:05 pm - 2:05 pm).

### Highland High School

Tutoring services provided in the student union on Monday-Thursday after school. Other tutoring services provided Monday-Friday, 6:30 am - 7:24 am and Tuesday/Thursday, 2:45 pm - 3:45 pm.

## AV Tutoring

Offers K-12, college and test prep assistance. Only renders service through home and community visits. Fee: \$35 an hour

## Boys and Girls Club AV

### Homework Assistance

\$25 a year for assistance and access to other club features.

## Lancaster School District

### Armargosa Creek Middle School

One hour of Math and Language Arts tutoring will be offered after school, enrichment tutoring may be offered as well.

### Endeavour Middle School

One hour of tutoring will be offered after school up to 3 days a week. Transportation will also be provided for students who normally take the bus to and from school.

### Piute Middle School

After school tutoring offered once a week. RISE After School Program provides homework assistance and child care until 5:30 pm. This is a resource that fills up quick, but foster youth are priority registrants. Registration begins in May of each year and students enrolled must re-enlist on an annual basis. Tutoring is offered on Wednesday, 3:00 pm - 4:00 pm, Room 33.

### New Vista Middle School

ACES Tutoring, students must sign up to participate. Offered Monday, Wednesday, Thursday, 3 - 4pm.

### Online Resources

LSD Online textbook publishers provide online resources as well to reinforce and support instruction. 6th-8th Language Arts, Math, and Social Studies McDougal Littell (choose the appropriate grade and subject). 6th-8th Science Glencoe (choose California Programs).

## Los Angeles County Library

### Partnership with Tutor.com

Students have access to live tutors online. Visit library website and click Tutor.com under the Digital Library tab. Free with library card number.

## Los Angeles County Office of Education

### Foster Youth Coordinating Services Coordinating Programs Tutoring

Students may be eligible to receive up to 20 hours of academic support with a review for potential additional hours, which may end prior to end of the fiscal year (June 30, 2019).

Services are designed to be one-on-one in-home tutoring with adult supervision.

Funding for Foster Youth Services can only be used for students (ages 5-21) residing within Los Angeles County who have an open DCFS/Dependency court or an open Probation/Delinquency court case, living in a suitable placement.

We do not service students in Kin-GAP (Kinship Guardianship Assistance Payment Program) at this time.

## Sylvan Learning Center

### AVUHSD SES Off Site Tutoring

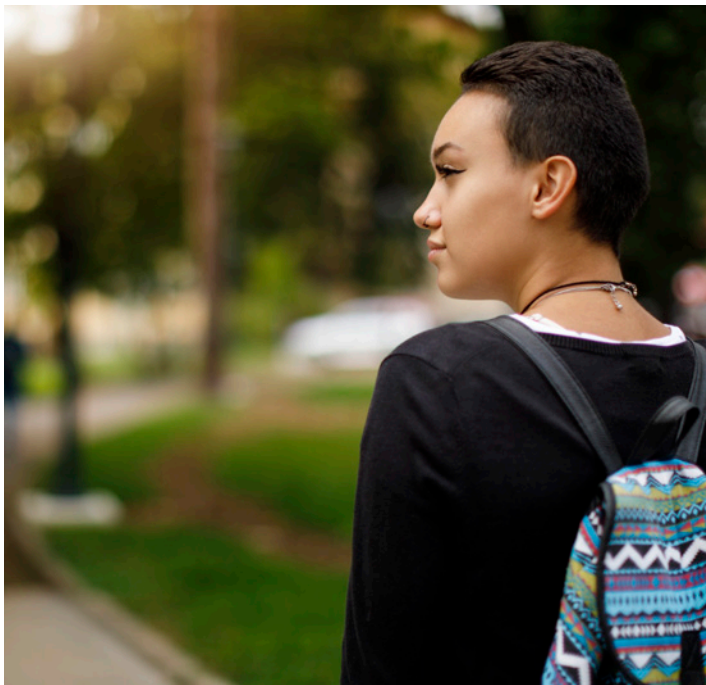
Offers K-12 and test prep assistance.

AVUHSD Fees: 20 hours free for students approved by AVUHSD, or \$48 an hour for k-8 students/standard enrollment.

Tutoring Hours: Monday - Friday 3:30 pm - 6:30 pm, Saturday 9:30 am - 12:30 pm.

Additional AVUHSD Partnership Information: No cap on approvals; Applications are generally dispersed during September and October via school flyer; Math, Reading and SAT Prep available; iPad and in person service provided.

# Transition Age Youth Services



## County of Los Angeles

### DMH Transition Age Youth (TAY) Division

The Enhanced Emergency Shelter Program contained in the Mental Health Services Act (MHSA) Plan will serve the immediate and urgent housing needs of the Seriously Emotionally Disturbed (SED)/ Severely Persistently Mentally Ill (SPMI) TAY population.

Eligibility: Must be TAY, ages 18-25, SED/SPMI, indigent, homeless or at imminent risk of homelessness, does not have any income, benefits, or any other resources to pay for shelter, and is not a danger to self, others, or gravely disabled. The Enhanced Emergency Shelter Program for TAY targets those youth who can otherwise live independently in the community and have minimal supervision needs. Youth who are under LPS conservatorship are not eligible for this program.

### Department of Child and Family Services (DCFS)

Please visit website or reach out to department contacts to access resources.

### Penny Lane Centers

#### Transitional Age Youth (TAY) Drop in Center (The Yellow Submarine)

The drop-in center provides a safe space for youth.

The center offers: hygiene products, showers, food, bus passes, hot meals and laundry services during hours of operation to meet basic needs. Also has a case manager on-site to assist with linkage to services such as mental health, employment, housing, etc.

Center hours: Tuesday – Friday, 1:00 pm - 7:00 pm; Saturday, 8:00 am - 8:00 pm.

Hours for hot meals: Tuesday – Friday hot dinner is served from 5:00 pm - 6:00 pm. On Saturdays breakfast is served from 8:00 am - 11:00 am, lunch 1:00 - 2:00 pm and dinner from 5:00 pm - 6:00 pm.

Youth between the age of 16 to 25.

## Probation Department

### Independent Living Services for Probation Foster Youth

Services are based on need and availability of funding.

Eligibility: Must have a probation placement, and over the age of 16 up to age 21 (even after case closure). Only an ILP/Transition Coordinator can verify eligibility.

However, if a youth is between the ages of 16- 20, they may be eligible for Independent Living Program (ILP) services if one of the following applies: (a) were/are in a foster care placement at any time from age 16 – 18\*; or (b) were/are under a legal guardianship with a relative (KinGAP) and received/are receiving KinGAP services between the ages of 16 to 18 years of age; or (c) were/are in a Dependency Court granted non-related legal guardianship that was granted on or after 8th birthday. These guidelines apply to DCFS and Probation foster youth.

\*This does not include youth placed in detention facilities, locked facilities, forestry camps, training schools, facilities that are primarily for the detention of youth who are adjudicated, delinquent, medical and psychiatric facilities, voluntary placements, wraparound program participants, youth placed pursuant to an individualized education program and guardianship placements in which the youth is not a dependent or ward of the court.

## Tarzana Treatment Center

### We Exist Program

We Exist is a new LA County Department of Mental Health (DMH) funded program dedicated to expanding access and improving services for LGBTI2-S transition age youth (TAY) and their families/caregivers. Free services for all individuals ages 16-25, including peer support groups, family/caregiver support groups, and referrals.

## The Salvation Army

### The Way In

Service Planning Area 1 (Antelope Valley) has a Transitional Housing Program (Scattered-Site Model – where youth are supported at various locations, not all youth in program are housed at the same site). The goal is to assist unaccompanied transitional aged youth to develop life skills, increase income, save money, become self-sufficient and transition into permanent housing.

There is also a Youth Family Reconnection Program (designed to reconnect Transitional Age Youth (TAY) with family and/or building/strengthening positive relationships with adults. The YFR program is a form of family intervention intended to support youth who desire to reconnect and strengthen their relationship with family or other supportive adults).

Dinner is provided Monday – Friday, 6:30 - 8:00 pm.

# Volunteer Opportunities



## Antelope Valley Hospital

### Teen Volunteer Program

Youth must complete an application and have caregiver sign as well. They must have a letter of Recommendation from a teacher, family friend or co-worker (if applicable) and must attach their current grades or report card. A 100 hour commitment is required if volunteering for program. Youth usually complete this in 10 months.

Eligibility: Must be in high school and 15 or older.

## City of Lancaster

### Volunteer Opportunities

Volunteer interest forms are available at the reception desk in City Hall, or on the website to download.

## City of Palmdale

### Administrative Services Community Programs

The City does accept community service participants from GAIN (Greater Avenues to Independence) based upon program needs. Participant should be aware that they must complete a program interview and background check prior to acceptance.

## City of Palmdale Volunteers

### Service Learning

Interns: The City accepts student learners and interns based upon availability. Students should contact the city well in advance if they have a specific department or program they would like to intern for. Service Hours: Student learners completing school required hours (20 hours or less) that are 16 years of age or older may contact SAVES. Available Hours: Monday – Thursday, 7:30 am – 6:00 pm. Service Project: Student learners are encouraged to develop service projects based on their individual interests.

### Court Ordered Service

The City accepts Court Referred Community Service in the following programs. A referral must be completed from the Volunteer Center of Los Angeles prior to registering with a City program.

## Grace Resource Center

Volunteers are needed for the hot meal service on Wednesday and Friday, 5:00 pm - 8:00 pm and Sundays, 12:00 pm – 3:00 pm. Volunteers can show up to volunteer without signing up as long as documented hours are not needed. If a volunteer needs documented hours; contact Matthew Buck to schedule a meeting Monday – Friday, 9:30 am – 4:30 pm.

Eligibility: Volunteers must be ages 14 and over.

# Volunteer Opportunities

## Lancaster United Methodist Church

Volunteers may be needed to help serve lunch to individuals who are homeless on Mondays and Thursdays at noon. If interested, schedule a meeting with Marie Anne to sign up to volunteer.

## Los Angeles County Animal Care Center (Animal Shelter)

A short-term volunteering program is not available. Due to the amount of training required, the care center is unable to accommodate volunteers wishing to complete community service hours for school or another organization. Volunteers must be able to commit to a minimum of 2 hours per week and make a 9 month commitment to the animal care center at which they will volunteer. Volunteer Coordinators are available at each site.

Eligibility: Must be at least 16 years of age to volunteer.

## Los Angeles County Library Volunteer Opportunities

To volunteer at any of the below listed LA County Libraries, youth must complete an application and take it to the desired library. Various tasks are assigned. Please see below for library specific information.

## Los Angeles County Library Volunteer Opportunities

### Quartz Hill Library

Hours: Monday, 9:00 am – 5:00 pm; Tuesday – Wednesday, 10:00 am – 8:00 pm; Thursday – Saturday, 9:00 am – 5:00 pm.

Youth will be required to complete Live Scan. This is free when completed in the main office in Santa Clarita. On occasions the Live Scan can be completed at the Quartz Hill Library. Tasks vary.

Eligibility: Volunteers must be 16 and older. Middle school aged youth can complete volunteer opportunities if they have required volunteer hours.

## Los Angeles County Library Volunteer Opportunities

### Little Rock Library

Hours: Monday – Tuesday, 11:00 am – 7:00 pm; Wednesday – Saturday, 9:00 am – 5:00 pm.

Finger printing is needed if volunteers are over the age of 14 years old. Once application is submitted, youth will be contacted to move forward with fingerprinting process.

Eligibility: No age minimum as long as youth can complete task they are assigned.

## Lancaster Library

Hours: Monday – Wednesday, 10:00 am – 8:00 pm; Thursday – Saturday, 9:00 am – 5:00 pm; Sunday, 1:00 pm – 5:00 pm.

Eligibility: Volunteers must be 14 years or older.

## North LA County CARES Mentoring Circle

Non-profit organization that focuses on the emotional, social, academic and professional development of children and the wellness of adults who mentor and parent them. Geared toward African-American children however does not exclude any group of children. Volunteer mentors are recruited, trained, deployed and supported throughout their mentoring tenure.

Programs include: The Rising, HBCU Rising, University for Parents, Community Circles.

Eligibility: For ages 18 or older.

## Palmdale City Library

Live scan and background check is required. When volunteering a time commitment is required. For available opportunities at Library visit website.

Eligibility: Youth 16 and older need to sign up to be a volunteer.

## Saddle Up Therapeutic Riding Stables

Volunteer needs include:

Horse Leaders: Must have previous horse experience and be at least 15 years old. Leaders must be very calm and enjoy being around horses. Must be able to walk for up to an hour. Some running may be involved if a team is trotting a horse.

Sidewalkers: No previous experience required. Must be at least 15 years old and able to walk for up to an hour.

Stable Hands: Given the nature of horses, there is always a need to clean the stalls, tack and groom the horses.

Saddle Up would like to have a consistent time commitment. Available times Tuesday, Wednesday, Friday, 2:00 pm – 5:00 pm; Saturday, 8:00 am – 12:00 pm.

Eligibility: Ages 15 years and up.

## SAVES

Hours: Monday - Thursday, 9:00 am – 6:00 pm.

Must complete an application and orientation.

Eligibility: Ages 16 and older can go on their own. If under 16, youth must be accompanied by an adult at all times.



# Workplace Development

## Advancing Communities Together

### Antelope Valley Youth Build (AVYB)

Leadership development program that offers opportunity youth from the ages 18 and above an accredited high school diploma through our education partner YouthBuild Charter School of California. The purpose is to offer youth a safe, supportive, and structured learning environment as well as helping them rebuild their communities and their lives. Participants spend 6 – 24 months in the program dividing their time between hands on construction learning utilizing Building & Trades Multi Craft Core Curriculum (MC3), career training, and project based learning.

Eligibility: Opportunity youth ages 18+. Must complete an application. There is a \$20 application fee.

### America's Job Center of California

This Job Center is the Antelope Valley Workforce Development Consortium that offers an array of services to both employers and job seekers which is comprised of the South Valley and Antelope Valley Work Source Centers. The Workforce Innovation and Opportunity Act (WIOA) of 2014 enacted a comprehensive youth employment program for serving eligible youth, ages 14 - 24, who face barriers to education, training, and employment.

Eligibility: Youth with little to no work experience must take The World of Work (WOW) Training, a 20 hour training program. Job placement and services are available for youth 14 - 24 years. The Lancaster office has orientation on Wednesdays at 3:00pm. Youth needs to be registered and needs to be scheduled for the orientation since they do fill up quickly. Visit <https://jobs.ca.gov/> to register. Youth can also go to the Job Center with the required documents for help to register.

### Antelope Valley Work Source Center

Provides services for the job seeker, including: Workshops on resume development, interview skills and networking; Small group and one-on-one coaching, career counseling and job search support; Access to job listings and on-site employer recruitments; Job training programs for eligible clients; Free access to computers, internet, fax and phones; Referrals to community partners for additional supportive services; Special programs for youth; Custom services for veterans; Weekly hiring events; Recruiting and Screening of Applicants; Skills Assessments; Support for Job Fairs and Open Houses; Referrals to Training Providers for Occupational Skills Training Customized Training Programs; No Fee Internet-Based Automated System to Place Job Openings; Access to Job Leads; Job Seeking and employment preparation workshop; Resume Creation; Job Club.

Eligibility: Right to Work documents needed - Valid CA Driver's License/Identification; Original Social Security Card.

## Department of Children and Family Services

### Military Veteran Program

The Department of Children and Family Services - Military Veteran Program (DCFS MVP) consists of DCFS employees who have



prior or current military service. Representatives from DCFS MVP voluntarily share their own experience in the military in order to provide direction and support for foster youth considering a career in the armed forces. The goal is to assist the youth with considering whether the military is appropriate and in their best interest.

### Job Corps

Various locations. Program provides housing while in program. Job Corps is the nation's largest career technical training and education program for young people ages 16 through 24. Students can earn a high school diploma, a high school equivalency credential, or college credits through Job Corps. Job Corps offers career technical training in more than 100 career areas. Students receive housing, meals, basic health care, a living allowance, training, and preparation for a career, all at no cost. For up to 21 months after graduation, a career transition counselor will help students make the transition from Job Corps into the real world. Spanish and English brochures are available.

Eligibility: Youth must be between ages 16-24 and be considered low income. Must complete an online application.

### Military Recruitment Offices

Antelope Valley Offices: U.S. Army Recruitment Office, U.S. Navy Recruitment Office, U.S. Air Force Recruitment Office, U.S. Marine Corps Recruitment Office.

### South Valley Work Source Center

Hours: Monday – Friday, 8:30 am - 4:30 pm (open until 6:30 pm on Wednesday); 3rd Saturday, 9:00 am - 1:00 pm.

# Youth Activities



## City of Lancaster

### Recreation

Visit website to access the activity guide and registration link.

## City of Palmdale

### Recreation

Visit website to access the activity guide and registration link.

## Los Angeles County Department of Parks and Receptions

To register for activities: click the park hyperlink or start with the find a park near you searchbar, select the activity on the park page, then register.

### Apollo Community Regional Park

Hours: sunrise to sunset.

### George Lane Park

Hours: sunrise to sunset.

### Jackie Robinson Park

Hours: sunrise to sunset.



# Contact Information

# Contact Information

ORGANIZATION	PROGRAM	ADDRESS / PHONE / EMAIL	WEBSITE
AB 490 Liaisons	Acton Agua Dulce School District	32248 Crown Valley Road Acton, CA 93510 General: (661) 269-0750   Fax: (661) 269-0849 AB490 Liaison: Amanda Fischer (661) 269-0849 ext.106 afischer@aadusd.k12.ca.us AB 490 Liaison: Paulette Buechner (661) 269-5999 ext.108 pbuechner@aadusd.k12.ca.us	
	Antelope Valley Learning Academy (Home School Program)	37212 47th St East, Palmdale, CA 93550 AB490 Liaison: Melinda Price (661) 494-1892 mprice@avlearning.org	
	Antelope Valley Union High School District	44811 North Sierra Hwy, Lancaster, CA 93534 General: (661) 948-7655   Fax: (661) 949-6292 AB 490 Liaison: Cheri Kreitz (661) 729-2321 ext.127 ckreitz@avhsd.org	
	Assurance Learning Academy	43145 Business Center Pkwy, Suite 102-103, Lancaster, CA 93535-4564 General: (877) 360-LEARN AB490 Liaison: Zuly Quezada (661) 494-2868 zquezada@assurancelearning.org	
	Desert Sands Charter School	44130 20th Street West, Lancaster, CA 93534 General: (877) 360-LEARN AB490 Liaison: Leesa Becaria (661) 349-6738 lbecaria@avhsd.org	
	Eastside School District	45006 30th Street East, Lancaster, CA 93535 General: (661) 952-1200   Fax: (661) 952-1232 AB490 Liaison: Margo Deal (661) 952-1225 mdeal@eastsideusd.org	
	Gorman School District	49847 Gorman School Rd, Gorman, CA 93243 General: (661) 248-6441   Fax: (661) 248-0604 AB490 Liaison: Johannes Andrews ext. 123 jandrews@lw.lacoe.edu	
	Hughes-Elizabeth Lakes	16633 Elizabeth Lake Road, Lake Hughes, CA 93532 General (661) 724-1231   Fax (661) 724-1231 AB490 Liaison: Dr. Lor Slaven (661) 724-1231 lslaven@heluesd.org	
	iLEAD Lancaster Charter	2110 W. Avenue K, Lancaster, CA 93536 General: (661) 494-7442   Fax: (866) 323-8394 AB490 Liaison: Laura Henriquez (661) 722-4287 laura.henriquez@ileadcharterschool.org	
	Keppel School District	34004 128th St E, Pearblossom, CA 93553 General: (661) 944-2155   Fax: (661) 911-3175 AB490 Liaison: Ward Lunneborg (661) 944-2372 wlunneborg@keppel.k12.ca.us	

# Contact Information

ORGANIZATION	PROGRAM	ADDRESS / PHONE / EMAIL	WEBSITE
	Lancaster School District	44711 Cedar Ave, Lancaster, CA 93534 General: (661) 948-46612   Fax: (661) 726-5457 AB 490 Liaison: Julie Eutsler (661) 940-4355 eutslerj@lancsd.org AB490 Liaison: Trish Wilson (661) 940-4355 wilsont@lancsd.org	
	Life Source International Charter	44339 Beech Ave, Lancaster, CA 93534 General: (661) 579-2970   Fax: (661) 579-2977 AB 490 Liaison: Deberae Culpepper (661) 579-2970 culpepperd@lifsourcecharterschool.org	
	Palmdale School District	39139 10th Street East, Palmdale, CA 93550 General: (661) 947-7191   Fax: (661) 537-6157 AB490 Liaison: Aaron Yoscovitz (661) 456-1462 ayoscovitz@palmdalesd.org	
	Westside School District	41914 50th Street West, Quartz Hill, CA 93536 General: (661) 722-0716   Fax: (661) 722-104 AB 490 Liaison: Kristin Gellinck-Frye (661) 722-0716 ext. 75305 k.gellinckfrye@westside.k12.ca.us	
	Wilsona School District	18050 East Avenue O, Palmdale, California 93591 General: (661) 264-1111   Fax: (661) 261-3259 AB490 Liaison: Annette Rego ext. 7216 arego@wilsona.k12.ca.us AB490 Liaison: Denisia Loero ext. 7205 dloera@wilsona.k12.ca.us	
Access		(800) 883-1295	<a href="https://accessla.org/home/">https://accessla.org/home/</a>
Advancing Communities Together	Antelope Valley Youth Build (AVYB)	38626 9th St E, Palmdale, CA 93550	<a href="http://www.advancingcommunitiesav.org/Antelope-Valley-Youthbuild">http://www.advancingcommunitiesav.org/Antelope-Valley-Youthbuild</a>
Alafia Mental Health Institute		43845 10th St West St 213 Lancaster, CA 93532 (661) 940-9094	<a href="http://www.cihssinc.org/">http://www.cihssinc.org/</a>
America's Job Center of California			<a href="https://jobs.ca.gov/">https://jobs.ca.gov/</a>
American Health Services LLC		2720 East Palmdale Blvd Suite 128-129, Palmdale, CA 93550 (661) 947-3333	<a href="http://www.americanhealthservices.org/">http://www.americanhealthservices.org/</a>
Antelope Valley College		Campus Address: 3041 West Avenue K, Lancaster, CA 93536 Main Phone: (661) 722-6300	<a href="https://www.avc.edu/sites/default/files/catalog/catalog.pdf">https://www.avc.edu/sites/default/files/catalog/catalog.pdf</a>
	Foster & Kinship Care Education	Office: CDC 118 (661) 722-6300 x6497	
	STAR Mentoring Program	Antelope Valley College Student Services, STAR Office, SSV 208 Saundra Cooley, STAR Student Support Services Program Director, Office SSV211 (Student Services Building) (661) 722-6300 x6084 scooley3@avc.edu	General Website: <a href="https://www.avc.edu/student-services/star">https://www.avc.edu/student-services/star</a> STAR Application: <a href="https://www.avc.edu/sites/default/files/student-services/star/application.pdf">https://www.avc.edu/sites/default/files/student-services/star/application.pdf</a>
	EOPS & CARE	Antelope Valley College Student Services, STAR Office, SSV 227 Rashitta Brown-Elize, EOPS Director, Office: SSV 227 Ext 6314 rbrownelize@avc.edu	<a href="https://www.avc.edu/student-services/eopscare">https://www.avc.edu/student-services/eopscare</a>

# Contact Information

ORGANIZATION	PROGRAM	ADDRESS / PHONE / EMAIL	WEBSITE
	Guardian Scholars Foster Youth	Antelope Valley College, Student Services, SSV 180 Tyneisha Stearns, Student Equity Program Specialist, Office: SSV 180 Ext 6156 tsteans@avc.edu	
	Learning Center: General Tutoring	Raquel Trejo, General Tutoring and Supplemental Instruction Tutorial Specialist Ext 6862 (Ext 6233 Department Contact) rtrejo4@avc.edu	<a href="https://www.avc.edu/studentservices/lc/general tutoring">https://www.avc.edu/studentservices/lc/general tutoring</a>
	Library	3041 W Ave. K, Lancaster, CA 93536	<a href="https://www.avc.edu/student services/library">https://www.avc.edu/student services/library</a>
Antelope Valley Community Clinic			<a href="https://avclinic.org/">https://avclinic.org/</a>
	Lancaster location	45104 10th St West, Lancaster, CA 93534	
	Palmdale location	37926 47th St E, Palmdale, CA 93552	
	Palmdale location	2151 East Palmdale Blvd, Palmdale, CA 93550	
Antelope Valley Health Neighborhood	Operation Motherhood - Moms Supporting Moms	44226 10th Street West, Lancaster, CA 93534 (213) 334-0653	
Antelope Valley Partners for Health	Welcome Baby Program	Main AVPH line: (661) 942-4719	<a href="http://www.avph.org/campaign/welcome-baby/">http://www.avph.org/campaign/welcome-baby/</a>
	Lactation Center & Breastfeeding Support Group		<a href="http://www.avph.org/campaign/lactation-center/">http://www.avph.org/campaign/lactation-center/</a>
	United We Mentor	44226 10th St. West, Lancaster, CA 93534 Cheyenne Capella, Director of Program Development (661) 942-4719 x107 Ccapell@avph.org	<a href="http://www.avph.org/campaign/united-we-mentor/">http://www.avph.org/campaign/united-we-mentor/</a>
	Healthy Families of America		<a href="http://www.avph.org/campaign/healthy-families-america/">http://www.avph.org/campaign/healthy-families-america/</a>
Antelope Valley Hospital		1600 West Avenue J, Lancaster, CA 93534 (661) 949-5000	<a href="https://www.avhospital.org/">https://www.avhospital.org/</a>
	Teen Volunteer Program	(661) 949-5105	<a href="https://www.avhospital.org/About/TeenVolunteer">https://www.avhospital.org/About/TeenVolunteer</a>
Antelope Valley Juvenile Probation Office		43917 Division Street, Lancaster, CA 93535 Phone: (661) 582-7000   Fax: (661) 723-1031 Office Hours: Monday-Friday, 8:00 am – 5:00 pm Katrina Wade, Transition Coordinator (323) 485-4631 Katrina.Wade@probation.lacounty.gov	
Antelope Valley Kidz Connection		2323 E Palmdale Blvd. Palmdale CA, 93550. (661) 265-8627	<a href="https://locator.lacounty.gov/health/Location/3181372/antelope-valley-kidz-connection">https://locator.lacounty.gov/health/Location/3181372/antelope-valley-kidz-connection</a>
Antelope Valley Transit Authority		42210 6th Street West, Lancaster, CA 93534 Office Hours: Monday – Friday, 8:00 am – 6:00 pm. Open 8:00 am – 2:00 pm on the last Saturday of each month for pass sales. (661) 945-9445	<a href="http://www.avta.com/">http://www.avta.com/</a>
Antelope Valley Union High School District	Palmdale High School	2137 E Ave R, Palmdale, CA 93550 (661) 273-1093	
	Eastside High School	44811 North Sierra Hwy, Lancaster, CA 93534 (661) 946-3800	
	Lancaster High School	44900 N. Division Street, Lancaster, CA 93535 (661) 726-7649	
	Highland High School	39055 25th Street West, Palmdale, CA 93551 (661) 538-0304	
	Online Resources		<a href="https://www.avdistrict.org/academics/resources">https://www.avdistrict.org/academics/resources</a>
	Link Crew	See school websites for more information.	
Antelope Valley Work Source Center		1420 W. Avenue I, Lancaster, CA 93534 (661) 726-4128	

# Contact Information

ORGANIZATION	PROGRAM	ADDRESS / PHONE / EMAIL	WEBSITE
AV Tutoring		(661) 430-9002	
Barnes Aviation		4555 West Avenue G Lancaster, CA 93536 (661) 948-4048	<a href="https://www.barnesaviation.com/">https://www.barnesaviation.com/</a>
Bartz-Altadonna Community Health Center		43322 Gingham Ave Suite 105, Lancaster, CA 93535 (661) 874-4050	<a href="http://www.bartz-altadonna-chc.org/services/">http://www.bartz-altadonna-chc.org/services/</a>
Boys and Girls Club AV	Homework Assistance	Lancaster: 45404 N. Division Street Lancaster, CA 93535 Palmdale: 815 Ave Q-6 E, Palmdale, CA 93550 Klarryssa Garza, Site Coordinator (661) 267-2582	
	Foster Friends	Lancaster Location Clarissa Garza, Site Coordinator (661) 267-2582	<a href="https://www.avbgc.org/foster-friends">https://www.avbgc.org/foster-friends</a>
Brandman University			<a href="https://www.brandman.edu/about-brandman/campus/antelope-valley">https://www.brandman.edu/about-brandman/campus/antelope-valley</a>
Breakthrough Parenting		Piute Wellness House 45534 5th Street East, Lancaster, CA 93535 12:00 pm – 2:00 pm Grace Resource Center 45134 Sierra Highway, Lancaster, CA 93534 5:30 pm – 7:30 pm	
California Mentor	Wraparound Services	1529 E Palmdale Blvd. Suite 212 Palmdale, CA 93550 (661) 526-5061	<a href="http://www.ca-mentor.com/who-we-are">http://www.ca-mentor.com/who-we-are</a>
California State University Bakersfield	Antelope Valley Satellite Campus	43909 30th Street West Lancaster, CA 93536 (661) 952-5000	
Care Net Women's Resource Center of North County		44733 10th Street West, Lancaster, CA 93534 (661) 729-4277	<a href="https://avcarenet.com/">https://avcarenet.com/</a>
CASA of Los Angeles County		Antelope Valley Office: 1040 West Avenue J, Room 1130, Lancaster, CA 93534 (661) 723-2272	
Change Lanes Youth Support Services		43845 10th Street West Suite 1-D, Lancaster, CA 93534 (661) 948-2555	Services Offered: <a href="http://www.changelanes.org/services_programs">http://www.changelanes.org/services_programs</a> Referral Form: <a href="http://www.changelanes.org/referral_form">http://www.changelanes.org/referral_form</a>
Child and Family Guidance Center		40005 10th St West, STE. 106 Palmdale, CA 93551 (661) 265-8627	<a href="https://www.childguidance.org/">https://www.childguidance.org/</a>
Children's Bureau of Southern California	Partnerships for Families	4404 16th St W Suite 208, Lancaster, CA 93534 (661) 951-2191	<a href="https://www.all4kids.org/programs/antelope-valley-services/">https://www.all4kids.org/programs/antelope-valley-services/</a>
	Mental Health Services	1529 E Palmdale Blvd # 210, Palmdale, CA 93550 (661) 272-9996  921 W Avenue J C, Lancaster, CA 93534 (661) 949-0131	<a href="https://www.all4kids.org/">https://www.all4kids.org/</a>
	Black Infant Health Program – Antelope Valley	915 W. Avenue J, Lancaster, CA, 93534 (661) 341-3057	
Children's Center of Antelope Valley		45111 Fern Ave. Lancaster, CA 93534 (661) 949-1206	<a href="http://www.ccav.org/">http://www.ccav.org/</a>
City of Lancaster	Recreation		<a href="https://www.cityoflanasterca.org/about-us/departments-services/parks-recreation-arts/recreation">https://www.cityoflanasterca.org/about-us/departments-services/parks-recreation-arts/recreation</a>
	Volunteer Opportunities	44933 Fern Avenue, Lancaster, CA 93534 Senior HR Analyst, Mayra Montero (661) 723-6014 volunteer@cityoflanasterca.org	
City of Palmdale	Palmdale City Library	700 E Palmdale Blvd, Palmdale, CA 93550 (661) 267-5600	<a href="http://www.cityofpalmdale.org/library">http://www.cityofpalmdale.org/library</a>
	Recreation		<a href="http://www.cityofpalmdale.org/Residents/Recreation-and-Culture">http://www.cityofpalmdale.org/Residents/Recreation-and-Culture</a>

# Contact Information

ORGANIZATION	PROGRAM	ADDRESS / PHONE / EMAIL	WEBSITE
	Volunteers: Court Ordered Service & Service Learning	Volunteer Los Angeles - Antelope Valley Office (661) 974-7576 City of Palmdale Maintenance Department (661) 267-5338 South Antelope Valley Emergency Services (SAVES) (661) 267-5191	
	Administrative Services Community Programs	823 East Avenue Q-9, Suite A, Palmdale, CA 93550 (661) 267-5473 For placement availability please contact Community Programs (661) 267-5665 engage@cityofpalmdale.org	<a href="http://www.cityofpalmdale.org/Volunteer">http://www.cityofpalmdale.org/Volunteer</a>
Clinica Medica Mi Familia		2520 East Palmdale Blvd Suite A, Palmdale, CA 93550 (661) 266-0800	<a href="http://www.clinicamifamilia.com/">http://www.clinicamifamilia.com/</a>
Clinica Mi Pueblo		343 East Palmdale Blvd, Palmdale, CA 93550 (661) 266-8551	<a href="https://clinicamiapueblo.com/?lang=en">https://clinicamiapueblo.com/?lang=en</a>
Clinical Training Institute		43801 15th Street West Lancaster, CA 93534 (661) 889-7171	<a href="https://www.clinicaltraininginst.com/">https://www.clinicaltraininginst.com/</a>
Contractors State License Schools		1122 West Avenue L-12 Lancaster, CA 93534 (661) 951-9895	<a href="https://www.contractorslicensingschools.com/">https://www.contractorslicensingschools.com/</a>
Cycles of Change Recovery Services		39860 West 27th Street, Palmdale, CA 93551 (877) 361-1728 or (661) 800-4828 for intake	<a href="https://cyclesofchangerecovery.com/">https://cyclesofchangerecovery.com/</a>
Desert Winds Church		38117 13th Street East, Palmdale, CA 93550 (661) 266-3400	<a href="https://dwccav.org/get-involved/">https://dwccav.org/get-involved/</a>
Design for Change Recovery Services		1066 East Avenue J, Lancaster, CA 93535 (661) 942-1026	<a href="https://designforchangerecovery.com/">https://designforchangerecovery.com/</a>
East West Urgent Care		38345 30th Street East B-1A, Palmdale, CA 93550 (661) 310-3388	<a href="http://www.eastwesturgentcare.com/">http://www.eastwesturgentcare.com/</a>
Family First Family Medical Practice		42135 10th St W Ste 201, Lancaster, CA 93534 (661) 341-3800	<a href="https://familyfirstmedgroup.com/">https://familyfirstmedgroup.com/</a>
Family Urgent Care and Industrial Medical		412 West Avenue J, Lancaster, CA 93534 (661) 723-3375	
Grace Resource Center		45134 Sierra Hwy, Lancaster, CA 93534 (661) 940-5272	<a href="http://graceresources.org/volunteer-information/">http://graceresources.org/volunteer-information/</a>
		45134 N. Sierra Highway, Lancaster, CA 93534 (661) 940-5272	<a href="http://graceresources.org/">http://graceresources.org/</a>
Great Commission Worship Center		10346 East Avenue R, Littlerock, CA 93543 (661) 944-3700	
Hathaway Sycamores Child And Family Services		44738 Sierra Highway Lancaster, CA 93534 (661) 942-5749	<a href="http://www.hathaway-sycamores.org/">http://www.hathaway-sycamores.org/</a>
Helping Hands Feeding Children		154 East Ave I, Lancaster, CA 93534 (661) 317-5915	<a href="http://gnlsecretary.wixsite.com/helpinghandsfeeding">http://gnlsecretary.wixsite.com/helpinghandsfeeding</a>
High Desert Medical College		701 West Avenue K Suite 123 Lancaster, CA 93534 (888) 633-4362	
High Desert Medical Group		43839 15th Street West, Lancaster, CA 93534 (661) 945-5984	<a href="http://hdmg.net/wordpress/">http://hdmg.net/wordpress/</a>
HopSkipDrive			<a href="https://www.hopskipdrive.com/">https://www.hopskipdrive.com/</a>
Inner Circle	Children's Advocacy Center	1216 West Avenue J Suite 500, Lancaster, CA 93534 (661) 230-5059	
Job Corps		(800) 733-5627	General website: <a href="https://www.jobcorps.gov/students">https://www.jobcorps.gov/students</a> Application: <a href="https://recruiting.jobcorps.gov/Form/StudentApplication">https://recruiting.jobcorps.gov/Form/StudentApplication</a>
Kaiser Permanente	Palmdale Medical Offices	4502 E. Avenue S, Palmdale, CA 93552 General line: 1-877-554-4404 (toll free)	
	Lancaster Medical Offices	43112 15th St. West, Lancaster, CA 93534	



# Contact Information

ORGANIZATION	PROGRAM	ADDRESS / PHONE / EMAIL	WEBSITE
	Antelope Valley Medical Offices	615 W. Avenue L, Lancaster, CA 93534	
	Behavioral Health	44444 20th St. West, Lancaster, CA 93534 (661) 951-0070	<a href="https://healthy.kaiserpermanente.org/southern-california/facilities/Behavioral-Health-100175">https://healthy.kaiserpermanente.org/southern-california/facilities/Behavioral-Health-100175</a>
Lancaster Beauty School		44646 10th Street West Lancaster, CA 93534 (661) 948-1672	<a href="http://www.lancasterbeautyschool.com/">http://www.lancasterbeautyschool.com/</a>
Lancaster School District	Armargosa Creek Middle School	44333 27th Street West Lancaster, CA 93536 (661) 729-6064 Marina Scates, Site Counselor scatesm@lancsd.org Melissa Zangerle, Site Counselor zangerlem@lancsd.org	
	Endeavour Middle School	43755 45th Street West Lancaster, CA 93536 Christine Clark, Site Counselor (661) 943-8270	
	Piute Middle School	425 East Ave H-11 Lancaster, CA 93535 Rachel Hollers, RISE Assistant Program Director (661) 607-1693	
	New Vista Middle School	753 East A753 East Ave K-2 Lancaster, CA 93535 (661) 726-4271	
	Online Resources	Lancaster, CA 93535	<a href="http://www.classzone.com/cz/index.htm">http://www.classzone.com/cz/index.htm</a> <a href="http://www.glencoe.com/sites/california/student/science/index.html">http://www.glencoe.com/sites/california/student/science/index.html</a>
Lancaster Sheriff's Station	VIDA (Vital Intervention and Directional Alternatives)	Lancaster Court, 1040 West Avenue J, Lancaster, CA 93535 (661) 949-6585	<a href="https://www.vida.la/">https://www.vida.la/</a>
Lancaster United Methodist Church		918 W. Ave. J Lancaster, CA 93534 (661) 942-0419	<a href="http://www.lancasterunited.org/">http://www.lancasterunited.org/</a>
Little Rock Community Clinic		201 Pearblossom Hwy, Littlerock, CA 93543 General Phone: (661) 471-4000 Appointments: (661) 471-4400	
LogistiCare			<a href="http://www.logisticare.com/transportation/">http://www.logisticare.com/transportation/</a> Services covered by health plans: <a href="https://facilityinfo.logisticare.com/Portals/203/Downloads/Phone%20Lists%20for%20FAQ%20page%20030215%20v2%20030615.pdf?ver=2015-03-17-114036-000">https://facilityinfo.logisticare.com/Portals/203/Downloads/Phone%20Lists%20for%20FAQ%20page%20030215%20v2%20030615.pdf?ver=2015-03-17-114036-000</a>
Los Angeles County	Lancaster Library	601 W Lancaster Blvd., Lancaster, CA 93534 (661) 948-5029	<a href="https://lacountylibrary.org/">https://lacountylibrary.org/</a>
	Littlerock Library	35119 80th St E., Littlerock, CA 93543 (661) 944-4138	
	Quartz Hill Library	5040 Ave M-2, Quartz Hill, CA 93536 (661) 943-2454	<a href="https://lacountylibrary.org/quartz-hill-library/">https://lacountylibrary.org/quartz-hill-library/</a>
Los Angeles County Animal Care Center (Animal Shelter)		Palmdale Animal Care Center 38550 Sierra Hwy Palmdale, CA 93550 (661) 575-2888	<a href="http://animalcare.lacounty.gov/youth-and-school-community-service-volunteering/">http://animalcare.lacounty.gov/youth-and-school-community-service-volunteering/</a>
		Lancaster Animal Shelter 5210 W Ave I, Lancaster, CA 93536 (661) 940-4191	
Los Angeles County Department of Children and Family Services (DCFS)	Military Veteran Program	dcfsmvp@dcfs.lacounty.gov	<a href="http://lacdcfs.org/mvp/">http://lacdcfs.org/mvp/</a>
	Lancaster Regional Office	300 East Avenue K-6, Lancaster, CA 93534 Reception: (661) 471-1001	
	Palmdale Regional Office	39959 Sierra Highway Suite 150, Palmdale, CA 93550 Reception: (661) 223-4200	
	Child Protection Hotline	(800) 540-4000	
	Cultural Broker Program	A'isha Davison (213) 514-1245 davisae@dcfs.lacounty.gov	

# Contact Information

ORGANIZATION	PROGRAM	ADDRESS / PHONE / EMAIL	WEBSITE
	Transition Age Resources	Greg Breuer (213) 351-0187 breugr@dcfs.lacounty.gov	Main Website: <a href="http://ilponline.org/">http://ilponline.org/</a> THP PLUS and Other Housing Application for Emancipation Status: <a href="http://file.lacounty.gov/SDSInter/dcfs/docs/1007006_DCFS6085,THP-PlusApplicationandAuthorization101416.pdf">http://file.lacounty.gov/SDSInter/dcfs/docs/1007006_DCFS6085,THP-PlusApplicationandAuthorization101416.pdf</a> . Transitional Housing Placement Plus Foster Care (THP+FC) Application: <a href="http://file.lacounty.gov/SDSInter/dcfs/docs/223115_DCFS6083,THP+FCApplication082216.pdf">http://file.lacounty.gov/SDSInter/dcfs/docs/223115_DCFS6083,THP+FCApplication082216.pdf</a>
	Parents in Partnership	PIPinfo@dcfs.lacounty.gov	<a href="http://lacdcfs.org/PIP_Eng/index_RE.html">http://lacdcfs.org/PIP_Eng/index_RE.html</a>
	Probation Coordination	176 Holston Drive, Lancaster CA, 93535 Transition Coordinator (213) 514-0119 Bobbi Ewell, Community Worker (661) 471-1230 ewelbo@dcfs.lacounty.gov  39959 Sierra Highway, Palmdale, CA 93550 Ayoka Chapple, Transition Coordinator (661) 723-0244 Leroy Mealancon, Community Worker (661) 223-4275 mealal@dcfs.lacounty.gov	
Los Angeles County Department of Mental Health	Transition Age Youth (TAY) Division	Belen Camacho-Fuller, LCSW, M.H.Clinical Program Manager II (213) 351-7737 bfuller@dmh.lacounty.gov Mary Romero, LCSW, M.H.Clinical Program Manager III (213) 738-4644 mromero@dmh.lacounty.gov Sarah Brock Chavez, Navigator (213) 248-8620 Nathalie Exconde, Housing Specialist (213) 334-5751	
Los Angeles County Department of Parks and Recreation	Apollo Community Regional Park	4555 W.Ave. G, Lancaster, CA 93536 General: (661) 940-7701	<a href="http://parks.lacounty.gov/apollo-community-regional-park/">http://parks.lacounty.gov/apollo-community-regional-park/</a>
	George Lane Park	5520 W.Ave. L-8, Lancaster, CA 93536 General: (661) 722-7780 Pool: (661) 722-4301	<a href="http://parks.lacounty.gov/george-lane-park/">http://parks.lacounty.gov/george-lane-park/</a>
	Jackie Robinson Park	8773 E.Ave. R, Littlerock, CA 93543 General: (661) 944-2880	<a href="http://parks.lacounty.gov/jackie-robinson-park/">http://parks.lacounty.gov/jackie-robinson-park/</a>
Los Angeles County Department of Public Social Services		349-B E. Ave. K-6, Lancaster, CA 93535 Participant Help Line: (626) 569-1399 or (310) 258-7400	<a href="http://my.dps.lacounty.gov/dps/offices/default.cfm?orgid=403">http://my.dps.lacounty.gov/dps/offices/default.cfm?orgid=403</a>
Los Angeles County Library	General Volunteer Opportunities		<a href="https://lacountylibrary.org/volunteer/">https://lacountylibrary.org/volunteer/</a>
	Volunteer Opportunities: Littlerock Library	35119 80th St East Littlerock, CA 93543 (661) 944-4138	
	Partnership with Tutor.com		<a href="https://lacountylibrary.org/">https://lacountylibrary.org/</a>
	Volunteer Opportunities: Quartz Hill Library	5040 Ave M-2, Quartz Hill, CA 93536 (661) 943-2454	<a href="https://lacountylibrary.org/quartz-hill-library/">https://lacountylibrary.org/quartz-hill-library/</a>
	Volunteer Opportunities: Lancaster Library	601 W Lancaster Blvd Lancaster, CA 93534 (661) 948-5029	<a href="https://lacountylibrary.org/lancaster-library/">https://lacountylibrary.org/lancaster-library/</a>
Los Angeles County Office of Education	Foster Youth Coordinating Services Coordinating Programs Tutoring	Co-located at Palmdale DCFS Office Gabriella Watkins (661) 223-4143 Watkins_Gabriella@lacoedu.edu Co-located at Lancaster DCFS Office Maria Diera (661) 471-1285 Diera_Maria@lacoedu.edu	<a href="https://www.lacoedu.edu/Student-Services/Homeless-Children-Youth/Foster-Youth/Tutoring">https://www.lacoedu.edu/Student-Services/Homeless-Children-Youth/Foster-Youth/Tutoring</a>
Los Angeles Training Institute for Alcohol & Drug Counseling		1543 E Palmdale Blvd Suite G Palmdale, CA 93550 (661) 947-9094	

# Contact Information

ORGANIZATION	PROGRAM	ADDRESS / PHONE / EMAIL	WEBSITE
Masada Homes		314 East Ave. K-4, STE. 104 Lancaster, CA 93535 (661) 726-5500	<a href="https://masadahomes.org/">https://masadahomes.org/</a>
Mental Health America		506 W. Jackman Street, Lancaster, CA 93534 (661) 726-2850	<a href="http://www.mentalhealthamerica.net/">http://www.mentalhealthamerica.net/</a>
Military Recruitment Offices		44509 Valley Central Way Lancaster, CA 93536 U.S. Air Force Recruitment Office: (661) 273-8541 U.S. Army Recruitment Office: (661) 945-3631 U.S. Marine Corps Recruitment Office: (661) 942-1513 U.S. Navy Recruitment Office: (661) 942-6111	
North LA County CARES Mentoring Circle		3053 Rancho Vista Blvd, Suite H-236 Palmdale, CA 93552 Gwen Cole (661) 450-8322	<a href="http://www.caresmentoring.org/index.php/affiliates">http://www.caresmentoring.org/index.php/affiliates</a>
Nurse Family Partnership		Darla Cole (contact for referrals and general information) (213) 639-6449	<a href="http://www.nursefamilypartnership.org/">http://www.nursefamilypartnership.org/</a>
Optimist Youth Homes and Family Services		520 West Palmdale Blvd. STE. D Palmdale, CA 93551 (661) 575-8395	<a href="https://www.oyhfs.org/">https://www.oyhfs.org/</a>
Palmdale 7th Day Adventist Church Community		1758 East Ave R, Palmdale, CA 93559 Pastor Jose Gutierrez (661) 947-8496	<a href="http://palmdale22.adventistchurchconnect.org/">http://palmdale22.adventistchurchconnect.org/</a>
Palmdale City Library		700 East Palmdale Blvd. Palmdale, CA 93550 (661) 267-5600	<a href="http://www.cityofpalmdale.org/Library">http://www.cityofpalmdale.org/Library</a>
Palmdale Regional Hospital		38600 Medical Center Drive, Palmdale 93551 (661) 382-5000	<a href="https://www.palmdaleregional.com/">https://www.palmdaleregional.com/</a>
Palmdale Sheriff's Station	VIDA (Vital Intervention and Directional Alternatives)	750 E Ave Q, Palmdale, CA 93550 (661) 272-2400	<a href="https://www.vida.la/">https://www.vida.la/</a>
	AV CERT (Community Emergency Response Team) Program	(661) 537-2901	<a href="http://www.antelopevalleycert.com/">http://www.antelopevalleycert.com/</a>
Pathways Community Services		44285 Lowtree St. Lancaster, CA 93534 Phone: (661) 341-3900   Fax: (661) 341-3904	<a href="http://www.pathways.com/">http://www.pathways.com/</a>
Pen or Pencil		National Alliance of Faith and Justice, 422 Landsford St., Lancaster, CA 93535 (661) 944-4129 x43	<a href="http://www.penorpencilmovement.org/#">http://www.penorpencilmovement.org/#</a>
Penny Lane Centers		43520 Division St. Lancaster, CA 93534 (661) 266-4783	<a href="http://www.pennylane.org/wpennylane/">http://www.pennylane.org/wpennylane/</a>
	Transitional Age Youth (TAY) Drop-in Center (The Yellow Submarine)	43520 Division Street, Lancaster, CA 93535	
	Domestic Violence Education and Support Group	(661) 206-0385	
	Parenting Class at Court Yard Lancaster	43423 Division St. Suite 102, Lancaster, CA 93535 To enroll, call (661) 206-6295.	
	Nurturing Parenting Program	43423 Division Street Suite 102, Lancaster, CA 93535 Allison Mercado (661) 206-0385 (661) 361-1822	
Personal Involvement Center, Inc.		44200 Lowtree Avenue, Suite 102 Lancaster, CA 93534 (661) 418-5093	<a href="http://personalinvolvementcenter.com/">http://personalinvolvementcenter.com/</a>

Planned Parenthood		533 East Palmdale Blvd Suite 533-A1, Palmdale, CA 93550 (800) 576-5544	<a href="https://www.plannedparenthood.org/health-center/california/palmdale/93550/antelope-valley-health-center-4054-90070">https://www.plannedparenthood.org/health-center/california/palmdale/93550/antelope-valley-health-center-4054-90070</a>
Probation Department	Independent Living Services for Probation Foster Youth	Youth Development Services (YSD) 3530 Wilshire Blvd. Suite 400, Los Angeles, CA 90010 (877) 694-5741 or (213) 351-0100 / 0101 youthds@dcfs.lacounty.gov	<a href="http://ilponline.org/">http://ilponline.org/</a>
Project Fatherhood		915 West Avenue J, Lancaster, CA 93534 Keith Blyn (661) 471-1061 BlynK@dcfs.lacounty.gov	
Saddle Up Therapeutic Riding Stables		41455 20th St W, Palmdale, CA 93551 (661) 267-2730 Sandy Johnson, Volunteer Coordinator saddleupvolunteer@gmail.com	<a href="http://avsaddleup.org/">http://avsaddleup.org/</a>
The Salvation Army	Emergency Shelter	45150 60th St W, Lancaster, CA 93534 (661) 723-4873	<a href="https://antelopevalleysalvationarmy.org/">https://antelopevalleysalvationarmy.org/</a>
	The Way In	44340 Lowtree Suite 105, Lancaster, CA 93535 (323) 573-0441	<a href="https://thewayin.salvationarmy.org/the_way_in_us_west/about-us">https://thewayin.salvationarmy.org/the_way_in_us_west/about-us</a>
	Food Programs	44517 N Sierra Hwy, Lancaster, CA 93534 (661) 948-3418	<a href="https://www.salvationarmyusa.org/usn/cure-hunger/">https://www.salvationarmyusa.org/usn/cure-hunger/</a>
San Joaquin Valley College		42135 10th Street West Suite 147 Lancaster, CA 93534 (661) 974-8282	
SAVES (South Antelope Valley Emergency Services)	Discounted transportation coupon	Main Office: 1002 East Avenue Q-12, Palmdale, CA 93550 Phone Hours: Monday – Thursday from 8:30 am - 5:30 pm, closed Friday. Main Phone: (661) 267-5191	
	Volunteer Program		<a href="http://www.cityofpalmdale.org/Residents/SAVES/Get-Involved">http://www.cityofpalmdale.org/Residents/SAVES/Get-Involved</a>
	Food Programs		<a href="http://www.cityofpalmdale.org/Residents/SAVES/Food-Programs">http://www.cityofpalmdale.org/Residents/SAVES/Food-Programs</a>
Sierra Urgent Care		44469 10th St W, Lancaster, CA 93534 (661) 945-9411 39115 Trade Center Drive, Palmdale, CA 93551 (661) 273-9550	
South Valley Work Source Center		38510 Sierra Highway, Palmdale, CA 93550 (661) 265-7421	
St. Vincent de Paul Lancaster		25058 Trevor Ave Suite B, Lancaster, CA 93534 (661) 942-3222	<a href="https://sites.google.com/view/saint-vincent-de-paul-olc">https://sites.google.com/view/saint-vincent-de-paul-olc</a>
Student Transportation of America		42138 7th St W, Lancaster, CA 93534 (661) 418-2597	<a href="https://www.ridesta.com/">https://www.ridesta.com/</a>
Summit Urgent Care		38656 Medical Center Dr C, Palmdale, CA 93551 (661) 273-7100	<a href="http://summiturgentcare.com/">http://summiturgentcare.com/</a>
Sylvan Learning Center	AVUHSD SES Off Site Tutoring	2311 10th St W, Lancaster, CA 93534 Kerry Apia, Sylvan Center Director (661) 524-0402 Kristina Duggan, AVUSD SES Approvals Kduggan@avhsd.org	
Tarzana Treatment Center		44447 10th Street West, Lancaster, CA 93534 (661) 945-9421 44443 10th Street West, Lancaster, CA 93534 (818) 996-1051	<a href="https://www.tarzanatc.org/">https://www.tarzanatc.org/</a>
	We Exist Program	Pennylane TAY Drop in Center (818) 654-3950 x7192 Rebecca Russell, Program Coordinator rrussell@tarzanatc.org	
	Antelope Valley – Family Medical Clinic	907 West Lancaster Blvd., Lancaster, CA 93534 (661) 723-4829	
Tessie Cleveland Community Services		450 W Palmdale Blvd, Palmdale, CA 93551 (323) 586-7333	<a href="https://www.tccsc.org/">https://www.tccsc.org/</a>
United Methodist Church		918 West Avenue J, Lancaster, CA 93534 (661) 942-0419	<a href="http://www.lancasterunited.org/">http://www.lancasterunited.org/</a>

University of Antelope Valley		44055 North Sierra Highway Lancaster, CA 93534 (661) 726-1911	<a href="https://www.uav.edu/">https://www.uav.edu/</a>
University of Phoenix		1202 W. Avenue J Lancaster, CA 93534 (844) 937-8679	<a href="https://www.phoenix.edu/">https://www.phoenix.edu/</a>
Valley Oasis		Main Office: (661) 942-2758 DVHF (Domestic Violence Housing First): (661) 945-6736 Valley Oasis Thrift Store: (661) 266-1948 Kayla's Place Services for Children: (661) 949-3269 Sexual Assault Response Services: (661) 949-6143 Hotline: (661) 723-7273	<a href="http://www.valleyoasis.org/index.php">http://www.valleyoasis.org/index.php</a>
VIP Family Care		1359 W. Avenue J, Lancaster, CA 93534 Bea Triplett, Office Manager (661) 726-5000	<a href="http://www.vipfamilycare.com/index4.html">http://www.vipfamilycare.com/index4.html</a>
Western Pacific Medical Corp – Lancaster		45335 North Sierra Highway, Lancaster, CA 93534 Program Manager: Shonda Celestine (661) 949-8599	<a href="http://westpacmed.com/index.asp">http://westpacmed.com/index.asp</a>
Women, Infants and Children (WIC) Supplemental Nutrition Program – Antelope Valley		Lancaster: 701 West Ave K, Suite 108 (661) 949-5805 Palmdale: 2247 East Palmdale Blvd., Suite A (661) 726-6300	<a href="http://www.wicworks.ca.gov/">http://www.wicworks.ca.gov/</a>
Wraparound Services	California Mentor, Children's Bureau, Child and Family Guidance Center, Hathaway Sycamores, Masada Homes, Penny Lane Centers, Personal Involvement Center, Tarzana Treatment Center, Tessie Cleveland Community Services	Please see various program location listings.	Please see various program websites.

## National Center for Youth Law Antelope Valley Contact Information

**Margaret Olmos, FosterEd California Director**

[molmos@youthlaw.org](mailto:molmos@youthlaw.org)

**Kawena Cole, Program Manager**

[kcole@youthlaw.org](mailto:kcole@youthlaw.org)

**Christal Heard, Education Liaison**

[cheard@youthlaw.org](mailto:cheard@youthlaw.org)

**Giselle Ramos, Education Liaison**

[gramos@youthlaw.org](mailto:gramos@youthlaw.org)

**Joanne Rodriguez, Education Liaison**

[jrodriguez@youthlaw.org](mailto:jrodriguez@youthlaw.org)

**Shelby Bambrick, Education Liaison**

[sbambrick@youthlaw.org](mailto:sbambrick@youthlaw.org)





## National Center for Youth Law

405 14th Street,  
15th Floor  
Oakland, CA 94612  
(510) 835-8098

[www.youthlaw.org](http://www.youthlaw.org)  
[info@youthlaw.org](mailto:info@youthlaw.org)