



First PTA Coffee Morning

家长的参与对学生的成功至关重要

当南京国际学校在10年前建造这座活动中心的时候，它也是作为一个社区中心建立的。这是对我们基本目标之一的回应，我们的基本目标是将NIS作为一个连接刚到中国的新家庭的桥梁。当时我们也不确定它将如何发展。许多学校喜欢与家长保持一定距离，而我们不是。继PTA咖啡早餐会之后，我们为家长提供了儿童保护研讨会以及IT培训。我们知道我们的学生父母受过良好教育，但我们也需要确保他们对我们工作的方式有所了解。

新学年第一次PTA咖啡早餐会上，我们非常开心地迎来家长教师协会的新领导。现场气氛欢欣热烈，无论是新入学的学生家长还是假期后返校的学生家长都热情地参加了这次早餐会，这代表着我校来自不同国家与地区，不同年龄孩子的家长们都很重视且非常乐意参与到多元化的学校生活中来。

本周我向自己发出挑战，选择我今年行动的三大基石。他们是**培养人才**，创造**第三教师**（学习环境至关重要的概念）以及**学生主张**。

试想一下，回到20年前你工作的地方，是否还会一样？现代教育的一大讽刺之处在于，如此多的成年人希望它与20年前一样。我想让学校与众不同，有趣并充满活力。我希望它能激发你们的好奇心，而不仅仅是孩子们的好奇心。我们被今天和明天的兴奋所驱使，尽管我们被过去告知我们并不想生活在那里。

Have an awesome August.

Laurie McLellan

lauriemclellan@nanjing-school.com

Content

From Mr. McLellan	01~02
SMS Notice	02
NIS Primary Parent Forum	02
Access to School Campus	03
Parent Led Conferences	04
Introduction to the MYP	05
G10 PPP Workshop	06
PS Variety Show	07
NIS Activities	08
Outdoor Survival	09
Parkour	10
Link for Lunch Menu, Swimming Pool	
Schedule & Community Events	11
MS/US Production Auditions	12
PTA News	13
Festival Weekend	14
Food Court Poster	15
Snow Japan 2020	16
September	17

Contact Information

Nanjing International School, Xue Heng Lu 8, Xian Lin College and University Town, Qi Xia District, Nanjing, P.R. China, 210023

www.nischina.org

Tel: +86 25 8589 9111 Email: enquiries@nanjing-school.com





First PTA Coffee Morning

Parent engagement is critical to student success

10년 전 NIS가 센터 건물을 지을 때, 센터는 커뮤니티의 중심이었습니다. 이는 NIS가 중국에 새로 온 가정에게 가교역할을 하겠다는 기본 목표에 부응하고자 함이었습니다. 당시는 이 계획이 어떻게 발전할 지에 대해 확신하지 못했었습니다. 많은 학교들의 시스템은 다소 학부모님들과 약간의 거리를 두려고 하지만, NIS는 다릅니다. PTA 커피모닝에 이어서 학부모님들을 위한 아동보호에 관한 워크숍과 IT 트레이닝을 가졌었습니다. 학부모님들이 이미 훌륭한 교육을 받으신 분들임을 알지만, NIS에서 어떻게 교육을 하는지 한번 더 알려드려야 했기 때문입니다.

새로운 PTA 임원들에 대한 큰 함성이 커피 모닝에서 울려 퍼졌습니다. 신입생 그리고 재학생 학부모님들의 놀라운 참여율이었을 뿐 아니라, 환영, 실천 그리고 폭넓은 학년과 다양한 국가에서 울리는 참여의 목소리였습니다.

금주에 저는 한해 동안 행동의 근간이 될 세가지 초석을 마련했습니다. 이 세가지는 바로 재능 개발, 제3의 교사(학습 환경의 중요한 역할), 그리고 학생의 입장을 지지하는 것입니다.

20년 전의 여러분의 직장을 상상해 보십시오. 지금과 같은가요? 그런데 현재 교육의 가장 큰 아이러니중의 하나가 많은 어른들이 20년 전과 같기를 원한다는 점입니다.

저는 NIS가 색다르고, 흥미로우며, 역동적으로 느껴졌으면 좋겠습니다. 그리고 아이들만의 호기심이 아닌 여러분의 호기심에도 자극을 주길 바랍니다. 비록 과거에서부터 우리의 모습이 이루어졌지만, 우리는 오늘 그리고 내일에 대한 기대감으로 살아갑니다.

Have an awesome August.

Laurie McLellan

lauriemclellan@nanjing-school.com



Content

From Mr. McLellan	01~02
SMS Notice	02
NIS Primary Parent Forum	02
Access to School Campus	03
Parent Led Conferences	04
Introduction to the MYP	05
G10 PPP Workshop	06
PS Variety Show	07
NIS Activities	08
Outdoor Survival	09
Parkour	10
Link for Lunch Menu, Swimming Pool	
Schedule & Community Events	11
MS/US Production Auditions	12
PTA News	13
Festival Weekend	14
Food Court Poster	15
Snow Japan 2020	16
September	17

Contact Information

Nanjing International School, Xue Heng Lu 8, Xian Lin College and University
Town, Qi Xia District, Nanjing, P.R. China, 210023

www.nischina.org

Tel: +86 25 8589 9111 Email: enquiries@nanjing-school.com

短信测试通知

南京国际学校将于8月28日周三下午2点进行群发短信测试，短信内容为：

“NIS Code TEST for ALL SCHOOL - this is a test of our SMS system”

如果您的手机未收到此测试短信，请查看Veracross页面右栏并点击”

Update my Household Profile” 更新您的联系方式

让我们在不大会发生的紧急情况下联系到您是非常重要的。

如您仍有问题，请联系我们。

Wendyhuang@nanjing-school.com

Upcoming Events:

The Upcoming Week is W3

Monday 26th August

ASA Cycle 1 begins

Tuesday 27th August

Parent Led Conference Afternoon

Wednesday 28th August

Gr11 Retreat

Gr11 Team Building

Thursday 29th August

Introduction to MYP Parents G6-10

Gr10 Personal Project Work Shop

Gr11 Retreat

Gr11 Team Building

Friday 30th August

MS/US Student Council Camp

PS Parent Forum

Saturday 31st August

Board Retreat

Sunday 1st September

Board Retreat

NIS Primary Parent Forum

- Join us to hear the story of the start to the new school year.

- Friday August 30th
- 9:00am-10:00am
- Large Group Room

- This is a great opportunity to also come and share your inquiries about the Primary School.



adamdodge@nanjing-school.com

IMPORTANT REMINDER

Campus Access for Students

Safe use of our facilities is of the utmost importance. Please refer to the access guidelines below.

"Supervised" means that students have a responsible adult from this NIS community with them.

"Scheduled" means that the activity has been formally organized or approved by NIS.

Campus Access by NIS Students

School Days	7:45am-3:15pm (<i>exception: supervised and/or scheduled activities or fitness room access</i>)
Weekends and Holidays	Scheduled and/or Supervised activities only
Fitness Room Access	<u>Grade 10-12 Students only</u> Weekdays: 5:30am-7:45am and 3:00pm-9:30pm Saturday and Sunday: 5:30am-9:30pm
Overall Student Access	Students may only be on-campus for the regular school day, scheduled and/or supervised activities, and/or to use the fitness room (G.10-12). No Student will be allowed access to campus between 10:00pm-5:00am.

Specifics	Who?	When?
Centre Cafe	Grade 11-12 students and Parent-supervised children	Outside of class times and during the Café's hours of operation, only
Cafeteria	All Students	During the school day as scheduled and after-school until 4:15pm, only if waiting for NIS-scheduled activities*
Gyms	All Students	During class, supervised breaks, and for scheduled and supervised activities, only
Design Centres		
Outdoor Areas		
Fitness Room	Grade 10-12 Students	5:30am-9:30pm
E-Bikes/Powered Scooters	Grade 10-12 Students	With a helmet!

Campus Access by NIS Alumni- Must follow NIS Visitor Code of Conduct

Not living in Nanjing, but visiting the school.	Have temporary status as a community member, not to exceed one week. Access to gym, community swim sessions, café, Ok.
Alumni residing in Nanjing with siblings/parents at NIS	Have community member status while family member is enrolled in or employed by NIS. Access to gym, community swim, café, etc. Ok.
Alumni in Nanjing without siblings/parents at NIS	Visitor Status. Can visit teachers at break/lunch. Must sign-in and obtain visitor sticker. No gym or pool access.

*Students in **Grades 4-9** who participate in NIS activities starting at 4:20pm may wait in the **cafeteria from 3:15pm – 4:15pm**. **All** other PK-Grade 10 students must be *directly* supervised in this space.

Questions? Please contact Mr. Kasson Bratton, Deputy Director-Learning

kassonbratton@nanjing-school.com

SPECIAL EVENT: PARENT LED CONFERENCES



Every student is unique, and brings his or her own talents and interests, thoughts and cares, to school each day.

In recognizing the individuality of each child, during Week 3 we will hold **Parent Led Conferences**. By listening to parents, who know their children best, we will be able to support your children better in their learning journey at NIS.

You will receive more information about sign-ups soon. Typically, Primary meetings may take place Monday through Thursday; most MS/US meetings will take place **Tuesday afternoon August 27th**.

Please note that there will be **no lessons** on Tuesday **afternoon from 1:30pm**.

LUNCH & BUSES on the day

Lunch will be provided for students as usual on Tuesday. For those families whose children take the **Home Caught bus** in the afternoon, buses will leave NIS at 1:30pm. Otherwise, parents should pick up their children at 1:20pm at the usual pick-up locations. There is no change to the Pre-K schedule on this day.

Should my child attend?

Yes! Your child is the focus of the conference.

What should you expect?

Here are some questions that will guide our meetings:

What do you feel we Need to know : <ul style="list-style-type: none">- What especially delights your child?- If overwhelmed, how does your child cope?- What was your experience like in this grade?- How do you remember that year of school?	What are you Excited about : <ul style="list-style-type: none">- What are your child's strengths and interests?- What are you and your child looking forward to this year?
What Suggestions do you have in helping me to know your child better: <ul style="list-style-type: none">- Is there a question you hope I'll ask you about your child?	Worried about : <ul style="list-style-type: none">- What are your fears or concerns about your child in this grade level?

Please contact your child's Teacher/Advisor or relevant Head of Section with questions.

See you then!

Mr. Adam Dodge
Head of Primary

Ms. Ruth Clarke
Head of Middle School

Ms. Katie Ham
Head of Upper School



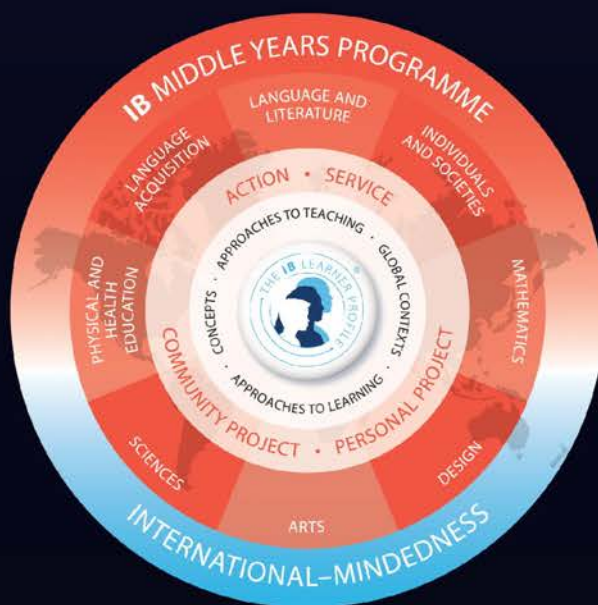
INTRODUCTION TO THE MYP

29 AUG 2019
MSUS LGR
08:15

**8.15: INTRODUCTION TO
THE MYP FOR ALL MYP PARENTS
GRADES 6-10**

**9AM: COFFEE BREAK AND PARENTS
OF STUDENTS G6-9 LEAVE**

9.15AM: PP PARENT WORKSHOP FOR G10 PARENTS

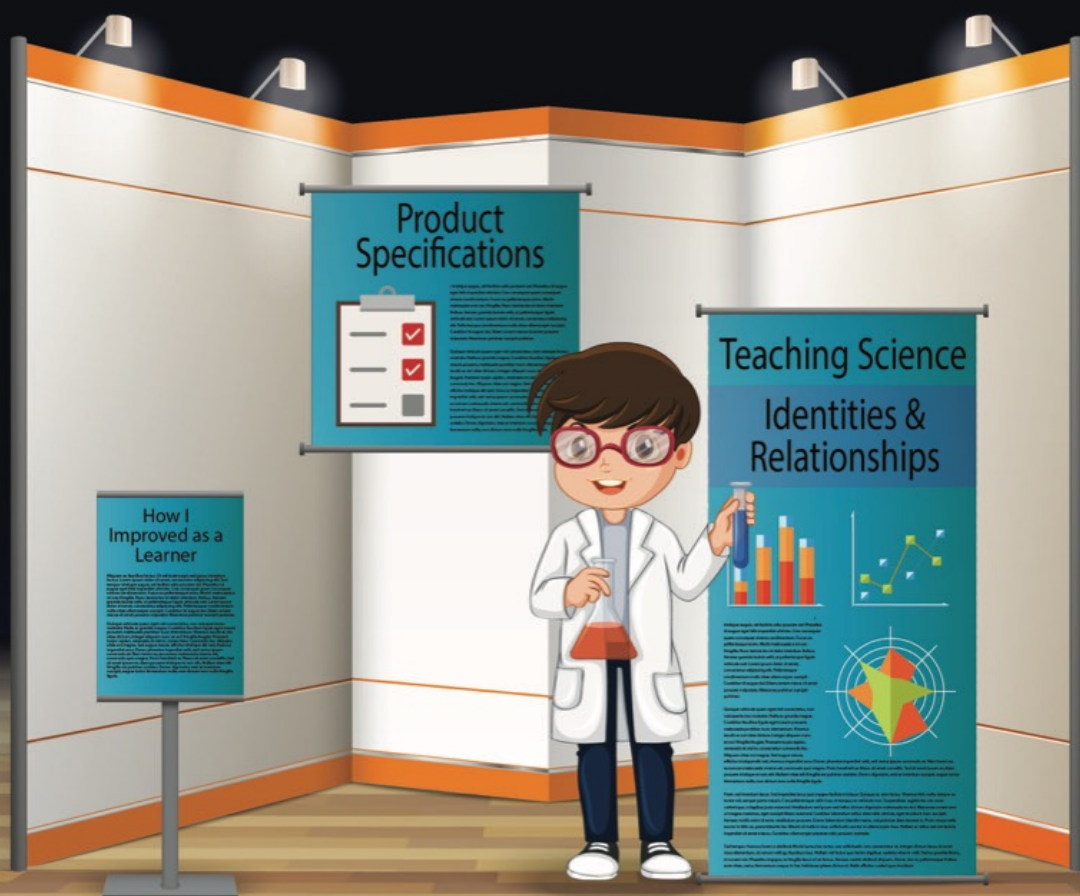




GRADE 10 PERSONAL PROJECT PARENT WORKSHOP

29 AUG 2019
MSUS LGR
09:15

WHAT IS A PP?
WHY IS IT IMPORTANT?
HOW DOES IT WORK?
HOW CAN I BEST SUPPORT MY CHILD?





Event: Primary School Variety Show

Date: Friday 11th October, 2019

Time: 8:10am

Venue: NIS theatre.

Auditions will be held in the Performing Arts room during the second half of lunchtime at the following times:

Friday 6th September

Gr.5 students

Monday 9th September

Gr.4 students

Tuesday 10th September

Gr.3 students

Wednesday 11th September

Gr.2 students

Thursday 12th September

Gr.1 students

Talent Show Criteria:

- 1. Each act must be no longer than 2 minutes**
- 2. Make eye contact with your audience**
- 3. Have lots of facial, vocal and body expression if your act requires it**
- 4. It should be well rehearsed/polished**
- 5. Have fun!**

***The students will find out by the end of the day on Tuesday 17th September whether or not they have been successful!**

The PS Student Council wish all of the students auditioning the best of luck.



ACTIVITIES

Swimming

Early morning swim team practices start with a cracker. Alex C. will be presenting on what it is like to be a student-athlete (swimmer) at University and how to juggle training and school work.



If you are a Gold, Silver or Bronze swimmer you are invited to come to morning practice on Monday 26th of August to attend the early morning swim session, the presentation and the team breakfast afterwards.



Athletics

As we enter Week 3, our Athletics program is now getting into full swing. CISSA Touch Rugby and ACAMIS Volleyball are both now running and Cross Country practices will start this coming week. On the horizon is CISSA Soccer and ACAMIS Table Tennis – watch out for the bulletin notices for sign ups.



After School Activities

Cycle 1 ASAs and Clubs will begin on August 26th

Children in grades 1 and 2 who have signed up for ASAs will be collected from their classroom and taken to the ASA venue. After the session, children must be collected by a parent, a designated adult or older sibling. Children who take the school bus will be collected by an Ayl and escorted to the bus. Students in grades 3-5 will go to the designated venue on their own.

Please note that Gymnastics will start on Tuesday, September 10th.



Discover China 2019

We are well underway with the planning of our 10 Discover China Trips. All trips in grades 6-11 will have a new Service Component added. Please ensure your child's travel documentation and visa information are updated on Veracross. Current and valid travel information is needed for train, plane and hotel reservations.



Volunteering

Please check the Daily Bulletin for upcoming volunteering opportunities at school.



Contact us:

dannyclarke@nanjing-school.com
annayuen@nanjing-school.com

kathrinlammers@nanjing-school.com
cac@nanjing-school.com

outdoor SURVIVAL



Are you a Middle or Upper School student interested in learning and mentoring Primary School students in...

- Camping skills
- Knot tying
- Setting up a shelter
- Orientation with a map and compass
- How to build and cook on a campfire
- First Aid
- Teamwork and Leadership skills

Why choose Outdoor Survival?

- Could count towards Service
- Could count towards the Global Citizen Diploma



An Outdoor Survival Club will begin in Cycle 2

For more information contact or visit Mr. Lee (leemayes@nanjing-school.com)





Are you a Middle or Upper School student interested in...

- Learning Parkour and getting strong, fit and flexible?
- Mentoring Primary students in Parkour
- Designing and building a Parkour course? (client project G9 & G10 - Product Design)

Why choose Parkour?

- Could count towards Service
- Could count towards the Global Citizen Diploma

A Parkour Club will begin in cycle 2.

For more information contact or visit Mr. Lee (leemayesa@nanjing-school.com)



Lunch Menu

<http://www.nischina.org/page.cfm?p=571>



Community Events

<http://www.nischina.org/page.cfm?p=534>



Swimming Pool Calendar

<http://www.nischina.org/page.cfm?p=585>



LITTLE SHOP OF HORRORS

Auditions in M251:

Wed, Aug 21
12:50 - 1:20

Thurs, Aug 22
3:15 - 4:15

Call-Backs
Sat, August 24
9:00 - 12:00



Please see a Music or Drama teacher for more information.

PTA NEWS

2019-2020

PTA COMMITTEE

President: Benedicte Thomasson
 Vice President: Yvonne Zollner
 Vice President: Gina Ryu
 Vice President: Ying Liu
 Treasurer: Gina Policelli
 Secretary: Jo Laycock

PTA EVENTS

Trivia Night - September 20th

Coffee Morning - 8:15am
 September 25th

PTA SHOP

PTA Shop Hours

Tuesday 2:00 - 3:00

Friday 2:30 - 3:30



Our first **Coffee Morning** of this school year was a big success. Thank you to all who attended & presented at this event.

Thank you to everyone who has provided their contact details to the PTA to be included on the list of volunteers. If you haven't done this

already, please send us an email at ptapresent@nanjing-school.com.

- **PTA Shop** sales were excellent this week - thank you for your support!
- **Trivia Night** will be **Friday 20th September!** More details will be announced soon. Start getting your brainiest buddies together for a fun night at NIS!
- **PTA Birthday Cupcakes** will be provided by the PTA on **September 11th** for all teachers and students with birthdays in August and September.
- **The Autumn Festival** is scheduled for **Saturday, November 2nd**. Event planning will begin soon. Parent volunteers are encouraged to help with the planning and at the event with Food, Games, Decorations, Volunteers and Tickets. Please consider joining the planning and as a volunteer for this FUN event!



To join the volunteer group for any of our PTA events, please contact Benedicte Thomasson, Yvonne Zollner, Gina Policelli or Sue Northcott. Or contact us on at ptapresident@nanjing-school.com

FESTIVAL WEEKEND

hosted at
Nanjing International School
No 8 Xueheng Road · Qixia District

SAT, Sept 7

6 pm until late



PFRANG MUSIC NIGHT

A relaxed and enjoyable night out with friends and a fundraiser for Pfrang Association.

- Live music featuring The Bad News Band
- International food court
- Raffle prizes

Admission

September 7th
6 pm

200 RMB

incl. 100 RMB food + drink voucher

Please bring your children on **Sunday** for the popular Pfrang Day children's games and entertainment.

For more
information
please contact:



**Pfrang
Association**

www.pfrangassociation.org
pfrang@sharehousechina.com

SUN, Sept 8

12 - 4 pm



NIC MEMBERSHIP WELCOME BBQ

An afternoon for families and friends, to welcome returning and new members of the Nanjing International Club. Join us, together we share, care and enjoy!

- BBQ Buffet
- Information about NIC
- Kids activities

Admission

September 8th
12 - 4 pm

• New & returning members	FREE
• Non-Members adults	250 RMB
• Kids < 12	100 RMB
• Kids activities (parents to Pfrang)	50 RMB

NIC MEMBERSHIP FEES:

Full Year	Oct 1 - Dec 31	Early Bird
Family	RMB 1400	RMB 1200
Couple	RMB 1200	RMB 1000
Single	RMB 1000	RMB 800
Student	RMB 200	RMB 100

Pre-registration days at NIC:
Aug 20, 27 + Sept 3 before and after school.



www.thenicclub.com



PFRANG LIVE MUSIC NIGHT & INTERNATIONAL FOOD COURT

**SATURDAY
SEPT. 7, 2019**

6PM -UNTIL LATE

**A RELAXED ADULT
EVENING WITH FRIENDS
AND FUNDRAISER FOR
PFRANG ASSOCIATION**

**ADMISSION
200 RMB
INCL. 100RMB FOOD &
DRINK VOUCHER**

**JOIN US AT NANJING
INTERNATIONAL
SCHOOL**

**MORE INFORMATION:
WWW.PFRANGASSOCIATION
PFRANG@SHAREHOUSECHINA.COM**



**BRING YOUR CHILDREN ON
SUNDAY FOR PFRANG DAY
CHILDREN'S GAMES AND
ENTERTAINMENT!**

**GOOD
MUSIC**





SNOW JAPAN 2020

24 – 31 Jan 2020
Japan

Families of all ages
and Gr 6 – 12
students of all abilities
welcome

Would you like to
learn how to ski or
snowboard?

**Then come join
the trip!!**

Full 6 days
ski/board
package
¥11,000
(plus flights)

More information
and bookings -
contact



dannyclarke@nanjing-school.com



MAKE EVERY STEP COUNT

FROM 1ST TO 28TH SEPTEMBER
Step up to the challenge and walk
10 000 steps per day

All the money raised through registration
fees will be divided equally between the four
charities.

Registration fee 100 RMB per person

Weekly prizes

Email: tea@thenicclub.com to register
and for more information

By paying the registration fee, you
agree to undertake this activity
at your own risk

