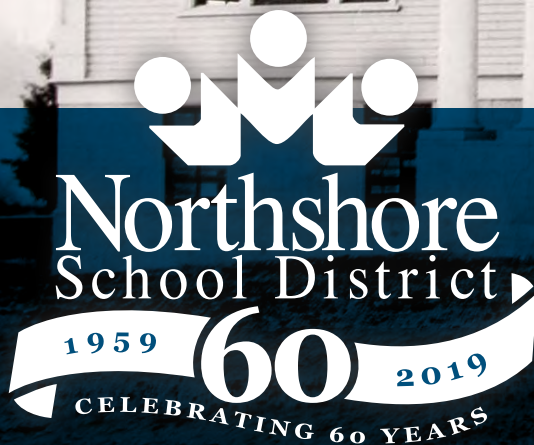




2019-20 CALENDAR



Celebrating Northshore...
then and now

Strengthening Our Community Through Excellence in Education

How it all began...

Public education has enjoyed the unique support of Northshore during the past 141 years when Susan Woodin opened her Woodinville home in 1878 to nine pupils taught by an itinerant schoolmaster. Three years later Woodinville parents constructed a small log school on the west bank of the Sammamish River, and in 1885 Bothell patrons built a one-room school house for their children on Main Street.

Today's Northshore School District is a meld of 12 such rural school districts that once dotted the area. Kenmore, Grace, North Creek, Derby/Hollywood, Paradise Lake, #101, Bear Creek, Cottage Lake, Bartelson and Fernwood districts joined Bothell and Woodinville in providing area students with an elementary education. High school age students would ride a boat into Seattle for high school services, boarding with Seattle families during the week and returning home on the weekends. The districts operated independently of each other until Bothell established a high school in 1907, whereupon they began contracting with Bothell for high school services.

Bothell was the education center for what is now Northshore. Over the years, most of the surrounding districts either dissolved and were annexed by, or consolidated with Bothell #46. Paradise Lake joined Cottage Lake in 1904, which in turn consolidated with Woodinville #23 to become Woodinville District #213 in 1931.

Rapid growth and contracting with Bothell for high school education services was taking its toll on the strained finances of Woodinville district, so Woodinville board members began consolidation discussions with Bothell. In February, 1959, both communities gave the merger idea an 85% yes vote in a consolidation election. On March 1, 1959, the State of Washington Superintendent of Public Instruction Office officially designated Northshore School District #417.

Today the Northshore School District serves almost 23,000 students through preschool programs, grades K-12 and the Adult Transition Program. The District encompasses the cities of Bothell, Kenmore and Woodinville and areas of unincorporated King and Snohomish counties.

COVER PHOTO: Bothell School #3, opened in 1907 and was the first school in the Northshore area to provide classes for grades 1-12. Grades 1-3 were located in the basement, grades 4-8 on the main floor, and grades 9-12 on the upper floor.

CREDITS: Washington State Archives, Retired Northshore School District Communications Director Terri Malinowski's article "The Past 75 Years of Northshore Education", Northshore School District archived records and Northshore Citizen/Bothell Kenmore Reporter Newspaper.



Kenmore Elementary students 1915



WA Anderson Junior High band 1959/ Fourth of July parade



Inglemoor High School Class of 2019

Who we are today...

District Leadership

Welcome to the 2019-20 school year in the Northshore School District.

Here in Northshore, we provide a rigorous educational program to challenge students and build strong foundational skills that will prepare them for postsecondary success in a global society.

Our mission: Strengthening Our Community Through Excellence in Education. We are achieving this through our new Strategic Plan, approved by the School Board in June 2017, that defines our clear strategic goals, details how we will measure these goals and identifies instructional techniques that will bring them to life in the classroom. The goals are supported by four building blocks that frame our strategies.

This calendar/planner provides you with important information about programs, opportunities and resources to assist you in supporting your child's education. We welcome your partnership in providing a supportive learning environment to help your child achieve academic excellence, and we appreciate your support of Northshore schools. Please contact me if I can be of any assistance.

Have a joyful and successful school year!

Dr. Michelle Reid

Superintendent

425.408.7701

superintendent@nsd.org

Twitter: @northshore_supt

The Northshore School District Board of Directors and staff appreciate your interest in Northshore public schools.

The Board of Directors consists of five members elected to serve, without compensation, for overlapping terms of four years each. While all school board members are elected from the district at large and represent the entire district, each school board position must come from one of five school board director districts. The board can better represent its constituents when you and others observe the board in action, express opinions and raise questions. Public participation and open lines of communication are vital to the educational success of our students.

School Board meeting information

School Board meetings are held on the second and fourth Mondays of the month at 4 p.m. and 7 p.m., respectively. The board will hold only one meeting in December and July. Board meetings are held in the Dr. G. E. Ricketts Board Room located in the Northshore School District Administrative Center, 3330 Monte Villa Pkwy., Bothell, WA 98021. Board-related items, including agendas, minutes and board meeting videos, are posted online at www.nsd.org/schoolboard. For questions about agenda items or upcoming meetings, please call 425.408.7701, or connect with us at www.nsd.org.

Strategic Plan Goals

GOAL 1 » Success in the early years

GOAL 2 » Responsible, resilient, empathetic learners

GOAL 3 » Growth for every student, elimination of outcome and opportunity gaps

GOAL 4 » Innovative, creative, critical thinkers

GOAL 5 » Ready for lifelong success after graduation

More details about our 2017-22 Strategic Plan can be found at www.nsd.org/strategicplan



Board of Directors

Jacqueline McGourty

DISTRICT 1

MEMBER, Term expires 2021

425.408.7683, sbdistrict1@nsd.org

Bob Swain

DISTRICT 2

MEMBER, Term expires 2019

425.408.7687, sbdistrict2@nsd.org

David Cogan

DISTRICT 3

VICE PRESIDENT, Term expires 2019

425.408.7689, sbdistrict3@nsd.org

Sandy Hayes

DISTRICT 4

PRESIDENT, Term expires 2021

425.408.7690, sbdistrict4@nsd.org

Amy Cast

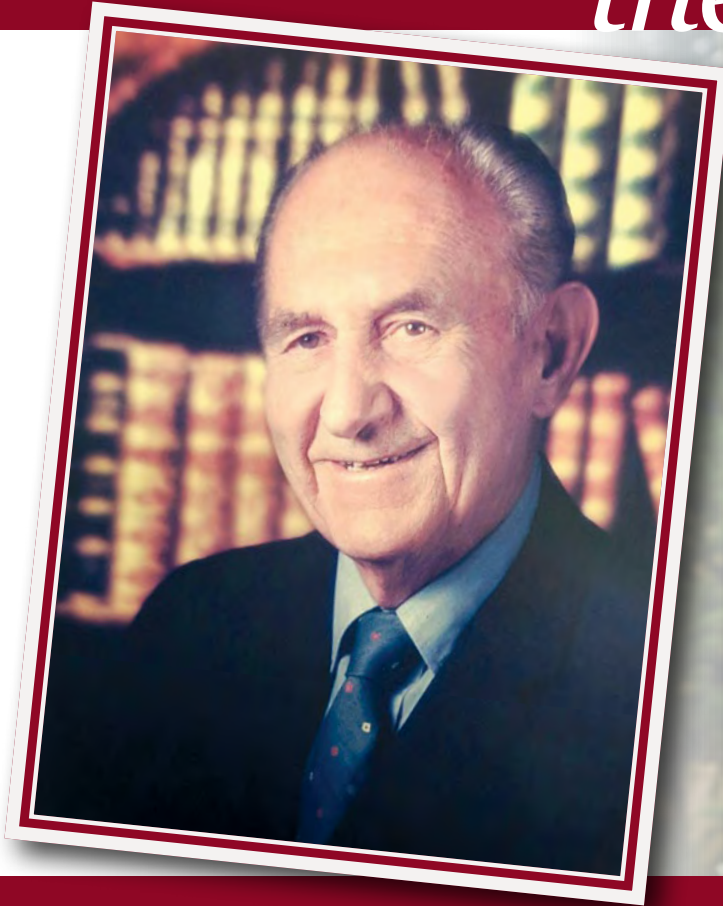
DISTRICT 5

MEMBER, Term expires 2021

425.408.7691, sbdistrict5@nsd.org

Left to Right: Dr. Michelle Reid, Vice President David Cogan, President Sandy Hayes, Amy Cast, Jacqueline McGourty, and Bob Swain

Celebrating Northshore... *then and now*



Times of rapid growth and construction...

Julian Karp was hired as Superintendent of Bothell Public Schools in 1954. During his tenure he took the school district through two decades of growth cycles, a major consolidation and considerable school construction before he retired.

The little district in 1954 consisted of one high school, one junior high school and two elementary schools

with a student population of 2,537. Bothell and Woodinville districts consolidated in 1959, and by 1973 a booming student population of 10,504 quickly turned it into a larger district boasting two high schools, four junior high schools, nine elementary schools and a center for handicapped students.

Dr. Michelle Reid was hired as Superintendent of Northshore Schools in 2016 and is the District's current superintendent. Since 1973, Northshore School District continued growing and currently has a student population of almost 23,000 students served by 34 schools and programs.



The Fall of 2020 will see Northshore School District open a new elementary school and a 30 classroom building to be shared by Skyview Middle and Canyon Creek Elementary schools. Additionally, a new concert hall with classroom and instruction space at Inglemoor High School is in design development. These new spaces are made possible by the generous support of our Northshore community, who voted to approve the 2018 bond.

SEPTEMBER 2019

www.nsd.org

SUNDAY	MONDAY	TUESDAY	WEDNESDAY	THURSDAY	FRIDAY	SATURDAY
1	2 LABOR DAY	3	4 FIRST DAY OF SCHOOL FOR GRADES 1-5, 6, 9, SAS	5 FIRST DAY OF SCHOOL FOR GRADES 7-8, 10-12	6	7
8	9 STAGGERED START FOR KTGN FOR GROUP A (check with your school) School Board Meeting 4 p.m.	10 STAGGERED START FOR KTGN FOR GROUP B (check with your school) FIRST DAY OF CLASSES FOR NORTHSORE NETWORKS *ASHURA	11 Patriot Day - Flags at Half Staff Wednesday Early Release	12 Woodinville HS Curriculum Night, 6:30 p.m.	13	14
15	16 FIRST DAY OF SCHOOL FOR SORENSON ECC	17 Constitution & Citizenship Day observed	18 Wednesday Early Release	19 Inglesmoor HS Curriculum Night, 6 p.m.	20	21
22	23 School Board Meeting 7 p.m. FIRST DAY OF AUTUMN	24	25 Wednesday Early Release	26 North Creek HS Curriculum Night, 6 p.m.	27	28
29	30 *ROSH HASHANAH ENDS OCT. 1	AUGUST 2019 S M T W T F S 1 2 3 4 5 6 7 8 9 10 11 12 13 14 15 16 17 18 19 20 21 22 23 24 25 26 27 28 29 30 31		OCTOBER 2019 S M T W T F S 1 2 3 4 5 6 7 8 9 10 11 12 13 14 15 16 17 18 19 20 21 22 23 24 25 26 27 28 29 30 31		

* Begins at sundown of previous day/ends at sundown

Celebrating Northshore... *then and now*



1974 female bus drivers in Northshore / photo courtesy of Northshore Citizen newspaper

The wheels on the bus go round and round...

Do you know that October is National School Bus Safety month? And, did you know that in 1962 Lillian Ayers was hired as the first female school bus driver for Northshore School District and was also the first female school bus driver in the state of Washington?

Today Northshore's Transportation drivers are 127 strong and 78 of those drivers (61%) are women.

OCTOBER 2019

www.nsd.org

SUNDAY	MONDAY	TUESDAY	WEDNESDAY	THURSDAY	FRIDAY	SATURDAY
		1 Bus Emergency Evacuation Drill: early EM	2 Bus Emergency Evacuation Drill: late EM Wednesday Early Release	3 Bus Emergency Evacuation Drill: MS, SAS, out of district Bothell HS Curriculum Night, 6:30 p.m. SAS Open House / Curriculum Night, 7 p.m.	4 Bus Emergency Evacuation Drill: HS	5
6	7 Northshore Networks Open House, 4-6 p.m.	8	9 Bus Emergency Evacuation Drill: SECC Wednesday Early Release *YOM KIPPUR	10	11	12
13	14 Indigenous Peoples' Day School Board Meeting 4 p.m.	15	16 Wednesday Early Release	17	18	19
20	21 Conversations w/Board (Spanish), Canyon Park MS Library, 7 p.m.	22 PACE Open House/Info Nights, Lockwood ES, Wellington ES, and Woodmoor ES, 7 p.m.	23 Wednesday Early Release	24	25	26
27 DIWALI	28 School Board Meeting 7 p.m.	29 BIRTH OF BAB	30 Wednesday Early Release	31	SEPTEMBER 2019 S M T W T F S 1 2 3 4 5 6 7 8 9 10 11 12 13 14 15 16 17 18 19 20 21 22 23 24 25 26 27 28 29 30	NOVEMBER 2019 S M T W T F S 1 2 3 4 5 6 7 8 9 10 11 12 13 14 15 16 17 18 19 20 21 22 23 24 25 26 27 28 29 30

* Begins at sundown of previous day/ends at sundown

Celebrating Northshore... *then and now*



In 1959, the only state-sanctioned sports girls could participate in were coed golf and tennis. The Bothell High School Girls Athletic Association promoted an "after-school sports" club including trampoline, volleyball, table tennis, bowling, basketball, badminton and tumbling. Mostly the girls played each other, but some teams competed in an AAU (Amateur Athletic Union) league.

With the advent of Title IX in 1972, high school girls could now compete in a myriad of WIAA sanctioned sports and activities.

During the 2018-19 school year, Northshore celebrated three high school girls who won WIAA 4A state championships: North Creek swimmer Gabby Dang, 50 meter freestyle and 100 meter butterfly (state record); Bothell gymnast Cora Taylor, bars; and North Creek track and field athlete Natalie Homer, javelin. In addition, Inglemoor fastpitch outfielder O'nalisa Hall was named to the 4A Washington State Softball Coaches Association all-state team.

All 2018-19 athlete photos courtesy of Bothell Kenmore Reporter newspaper

NOVEMBER 2019

www.nsd.org

SUNDAY	MONDAY	TUESDAY	WEDNESDAY	THURSDAY	FRIDAY	SATURDAY
<p>OCTOBER 2019</p> <p>S M T W T F S</p> <p>6 7 8 9 10 11 12</p> <p>13 14 15 16 17 18 19</p> <p>20 21 22 23 24 25 26</p> <p>27 28 29 30 31</p>	<p>DECEMBER 2019</p> <p>S M T W T F S</p> <p>1 2 3 4 5 6 7</p> <p>8 9 10 11 12 13 14</p> <p>15 16 17 18 19 20 21</p> <p>22 23 24 25 26 27 28</p> <p>29 30 31</p>				<p>1</p> <p>First Quarter Ends</p>	<p>2</p>
<p>3</p> <p>Daylight Savings Time - Set Clocks BACK One Hour</p>	<p>4</p>	<p>5</p> <p>General Election - REMEMBER TO VOTE</p>	<p>6</p> <p>Wednesday Early Release</p>	<p>7</p>	<p>8</p>	<p>9</p>
<p>10</p>	<p>11</p> <p>VETERANS DAY OBSERVED NO SCHOOL</p>	<p>12</p> <p>School Board Meeting 4 p.m.</p>	<p>13</p> <p>Wednesday Early Release</p>	<p>14</p>	<p>15</p>	<p>16</p>
<p>17</p>	<p>18</p>	<p>19</p>	<p>20</p> <p>Wednesday Early Release</p>	<p>21</p> <p>ELEMENTARY CONFERENCES/ Elementary Early Dismissal</p>	<p>22</p> <p>ELEMENTARY CONFERENCES/ Elementary Early Dismissal</p>	<p>23</p>
<p>24</p>	<p>25</p> <p>ELEMENTARY CONFERENCES/ Elementary Early Dismissal</p> <p>School Board Meeting 7 p.m.</p>	<p>26</p> <p>ELEMENTARY CONFERENCES/ Elementary Early Dismissal</p>	<p>27</p> <p>ELEMENTARY CONFERENCES/ Elementary Early Dismissal</p>	<p>28</p> <p>THANKSGIVING DAY NO SCHOOL</p>	<p>29</p> <p>THANKSGIVING BREAK NO SCHOOL</p>	<p>30</p>

Celebrating Northshore... *then and now*



During the 1959-60 school year, Northshore began offering Saturday classes for accelerated students, and by 1971, 185 students participated in the Saturday classes.

Today, Northshore offers highly capable services during the school day in each elementary and middle school, serving 3,529 students in grades 1-8.

DECEMBER 2019

www.nsd.org

SUNDAY	MONDAY	TUESDAY	WEDNESDAY	THURSDAY	FRIDAY	SATURDAY
1	2 Conversations w/Board, Kenmore MS Library, 7 p.m.	3	4 Wednesday Early Release	5	6	7 Pearl Harbor Remembrance Day - Flags at Half Staff
8	9 School Board Meeting 4 p.m.	10	11 Wednesday Early Release	12	13	14
15	16	17	18 Wednesday Early Release	19	20	21 FIRST DAY OF WINTER
22	23 WINTER BREAK NO SCHOOL *HANUKKAH ENDS DEC. 30	24 WINTER BREAK NO SCHOOL	25 WINTER BREAK NO SCHOOL CHRISTMAS	26 WINTER BREAK NO SCHOOL KWANZAA ENDS JAN. 1	27 WINTER BREAK NO SCHOOL	28
29	30 WINTER BREAK NO SCHOOL	31 WINTER BREAK NO SCHOOL	NOVEMBER 2019 S M T W T F S 1 2 3 4 5 6 7 8 9 10 11 12 13 14 15 16 17 18 19 20 21 22 23 24 25 26 27 28 29 30	JANUARY 2020 S M T W T F S 1 2 3 4 5 6 7 8 9 10 11 12 13 14 15 16 17 18 19 20 21 22 23 24 25 26 27 28 29 30 31		

* Begins at sundown of previous day/ends at sundown

Celebrating Northshore... *then and now*



Refurbishing the old, building the new...

Woodinville School District #213 consisted of Woodinville and Cottage Lake elementary schools. Woodinville area high school students attended Bothell High School.

Woodinville Elementary School students were moved to Cottage Lake in 1962 and the building became a center for handicapped students. The C.O. Sorenson Early Childhood Center moved from the downtown Woodinville site to its new Bothell site in 2002. Today the City of Woodinville is including the historic school building in its revitalization plan for downtown Woodinville.

Northshore's Elementary #21 is currently under construction and is slated to open in the Fall of 2020. The new elementary school, which was made possible by the Northshore community voting yes on the 2018 bond, will help ease the growing population in the north end of our school district.

JANUARY 2020

www.nsd.org

SUNDAY	MONDAY	TUESDAY	WEDNESDAY	THURSDAY	FRIDAY	SATURDAY
	DECEMBER 2019 S M T W T F S 1 2 3 4 5 6 7 8 9 10 11 12 13 14 15 16 17 18 19 20 21 22 23 24 25 26 27 28 29 30 31	FEBRUARY 2020 S M T W T F S 1 2 3 4 5 6 7 8 9 10 11 12 13 14 15 16 17 18 19 20 21 22 23 24 25 26 27 28 29	1 NEW YEAR'S DAY NO SCHOOL	2 WINTER BREAK NO SCHOOL	3 WINTER BREAK NO SCHOOL	4
5	6 SCHOOL RESUMES	7 ORTHODOX CHRISTMAS	8 Wednesday Early Release	9	10	11
12	13 School Board Meeting 4 p.m.	14	15 Wednesday Early Release	16 Temperence and Good Citizenship Day	17	18
19	20 MARTIN LUTHER KING, JR. DAY NO SCHOOL	21	22 Wednesday Early Release	23	24 First Semester Ends	25 CHINESE (LUNAR) NEW YEAR
26	27 NON-STUDENT DAY/ GRADING DAY NO SCHOOL School Board Meeting 7 p.m.	28	29 Wednesday Early Release	30	31	

Celebrating Northshore... *then and now*



The Bothell High School Cougar band, under the direction of Bernie Ackerman, played for President Kennedy at the University of Washington Centennial (1961) and at the Seattle World Fair (1962) bringing both national and international recognition to the program.

The Woodinville High School Symphony Orchestra, under the direction of Loren Tanksley, was one of four groups selected from across the nation to perform in the National Instrumental Festival at Carnegie Hall on Feb. 24, 2019.

FEBRUARY 2020

www.nsd.org

SUNDAY	MONDAY	TUESDAY	WEDNESDAY	THURSDAY	FRIDAY	SATURDAY
				JANUARY 2020 S M T W T F S 1 2 3 4 5 6 7 8 9 10 11 12 13 14 15 16 17 18 19 20 21 22 23 24 25 26 27 28 29 30 31	MARCH 2020 S M T W T F S 1 2 3 4 5 6 7 8 9 10 11 12 13 14 15 16 17 18 19 20 21 22 23 24 25 26 27 28 29 30 31	1
2	3	4 Bus Emergency Evacuation Drill: early EM	5 Bus Emergency Evacuation Drill: late EM Wednesday Early Release	6 Bus Emergency Evacuation Drill: MS, SAS, out of district	7 Bus Emergency Evacuation Drill: HS ELEMENTARY CONFERENCES/ Elementary Early Dismissal	8
9	10 School Board Meeting 4 p.m.	11 Bus Emergency Evacuation Drill: SECC	12 Wednesday Early Release	13	14	15
16	17 PRESIDENTS' DAY NO SCHOOL	18 MID WINTER BREAK NO SCHOOL	19 MID WINTER BREAK NO SCHOOL	20 MID WINTER BREAK NO SCHOOL	21 MID WINTER BREAK NO SCHOOL	22
23	24 School Board Meeting 7 p.m.	25	26 Wednesday Early Release ASH WEDNESDAY	27	28	29

Celebrating Northshore... *then and now*



In 1959, Northshore appointed Bothell High School Band Director Bernie Ackerman as district music director. In 1965 Northshore began an elementary strings music program.

Today's comprehensive elementary band and orchestra program is free to all Northshore students in grades 4 and 5, offering courses in first- and second-year strings and first-year band.

MARCH 2020

www.nsd.org

SUNDAY	MONDAY	TUESDAY	WEDNESDAY	THURSDAY	FRIDAY	SATURDAY
1	2 Conversations w/Board, Timbercrest MS Library, 7 p.m. IB Information Night for Class of 2024, NPAC, 7 p.m. ORTHODOX LENT BEGINS	3	4 Wednesday Early Release	5	6	7
8 Daylight Saving Time - Set Clocks AHEAD One Hour	9 School Board Meeting 4 p.m.	10	11 Wednesday Early Release	12	13	14
15	16	17	18 Wednesday Early Release Kindergarten Orientation, NPAC, 7 p.m.	19 FIRST DAY OF SPRING	20 *BAHÁ'Í NEW YEAR'S DAY	21
22	23 School Board Meeting 7 p.m.	24	25 Wednesday Early Release	26	27	28
29	30	31	FEBRUARY 2020 S M T W T F S 1 2 3 4 5 6 7 8 9 10 11 12 13 14 15 16 17 18 19 20 21 22 23 24 25 26 27 28 29	APRIL 2020 S M T W T F S 1 2 3 4 5 6 7 8 9 10 11 12 13 14 15 16 17 18 19 20 21 22 23 24 25 26 27 28 29 30		

* Begins at sundown of previous day/ends at sundown

Celebrating Northshore... *then and now*



In 1960, Northshore hired one fulltime developmental teacher for each school. Today Northshore employs 164 special education teachers and over 370 special education paraeducators for grades Pre-school, K-12 and the Adult Transition Program.

APRIL 2020

www.nsd.org

SUNDAY	MONDAY	TUESDAY	WEDNESDAY	THURSDAY	FRIDAY	SATURDAY
	MARCH 2020 S M T W T F S 1 2 3 4 5 6 7 8 9 10 11 12 13 14 15 16 17 18 19 20 21 22 23 24 25 26 27 28 29 30 31	MAY 2020 S M T W T F S 1 2 3 4 5 6 7 8 9 10 11 12 13 14 15 16 17 18 19 20 21 22 23 24 25 26 27 28 29 30 31	1 Wednesday Early Release	2	3 Third Quarter Ends	4
5	6 SPRING BREAK NO SCHOOL	7 SPRING BREAK NO SCHOOL	8 SPRING BREAK NO SCHOOL	9 SPRING BREAK NO SCHOOL *PASSOVER ENDS APRIL 16	10 SPRING BREAK NO SCHOOL GOOD FRIDAY	11
12 EASTER	13 School Board Meeting 4 p.m.	14	15 Wednesday Early Release	16	17 ORTHODOX GOOD FRIDAY	18
19 ORTHODOX EASTER	20 Conversations w/Board, Skyview MS Library, 7 p.m.	21	22 Wednesday Early Release	23 *RAMADAN ENDS MAY 23	24	25
26	27 School Board Meeting 7 p.m.	28 NINTH DAY OF RIVDAN	29 Wednesday Early Release	30		

* Begins at sundown of previous day/ends at sundown

Celebrating Northshore... *then and now*



1965 photo courtesy of
Northshore Citizen newspaper



**Heigh ho, Heigh ho, it's
off to camp we go...**

In 1965, a new outdoor environmental education program for all fifth-graders took them each spring for three days to Camp Casey located on Whidbey Island. Since 2010, Northshore fifth-graders attend Camp Cedar Springs located in the Lake Stevens area.

MAY 2020

www.nsd.org

SUNDAY	MONDAY	TUESDAY	WEDNESDAY	THURSDAY	FRIDAY	SATURDAY
			APRIL 2020 S M T W T F S 1 2 3 4 5 6 7 8 9 10 11 12 13 14 15 16 17 18 19 20 21 22 23 24 25 26 27 28 29 30	JUNE 2020 S M T W T F S 1 2 3 4 5 6 7 8 9 10 11 12 13 14 15 16 17 18 19 20 21 22 23 24 25 26 27 28 29 30	1 TWELFTH DAY OF RIVDAN	2
3	4	5	6 Wednesday Early Release	7	8	9
10 Mother's Day	11 School Board Meeting 4 p.m.	12	13 Wednesday Early Release	14 C.P. and Dorothy Johnson Humanitarian Awards - NPAC	15 Peace Officers Memorial Day - Flags at Half Staff	16
17	18	19	20 Wednesday Early Release	21	22	23 DECLARATION OF BAB
24 *EID AL FITR	25 MEMORIAL DAY NO SCHOOL	26 School Board Meeting 7 p.m.	27 Wednesday Early Release	28 ASCENSION OF BAHĀ'U'LLAH	29	30
31						

* Begins at sundown of previous day/ends at sundown

Celebrating Northshore... *then and now*



The Bothell High School Class of 1959, Northshore School District's first graduating class, had 165 graduates. Sandra Peterson was the Valedictorian with a 3.824 GPA.

More than 1,500 students graduated from the Northshore School District in 2019, representing Bothell, Inglemoor, North Creek and Woodinville high schools; Northshore Networks and the Secondary Academy for Success; and the Adult Transition Program.

Also in 2019, North Creek High School celebrated their first graduating class of 323 students. North Creek Valedictorians included Ian Burnett, Trisha Dani, Rachel Green, Natalie Holmer, Shea Hoogerwerf, Logan Milandin, Kyle Mumma, Sigrun Payne and Vrishabhadev Sathish Kumar, all with a 4.0 GPA.

JUNE 2020

www.nsd.org

SUNDAY	MONDAY	TUESDAY	WEDNESDAY	THURSDAY	FRIDAY	SATURDAY
	1	2	3 Wednesday Early Release	4 District Retirement Celebration	5	6
7	8 School Board Meeting 4 p.m.	9 ATP Programs Graduation, Location TBD	10	11 SAS/Northshore Networks Graduations, NPAC	12	13
14 Flag Day	15 HIGH SCHOOL GRADUATIONS Angel of the Winds Arena, Everett Bothell 3:30 p.m. / North Creek 7:00 p.m.	16 HIGH SCHOOL GRADUATIONS Angel of the Winds Arena, Everett Woodinville 3:30 p.m. / Inglemoor 7:00 p.m.	17	18 LAST DAY OF SCHOOL	19 NON-STUDENT DAY/ GRADING DAY	20 FIRST DAY OF SUMMER
21 Father's Day	22 School Board Meeting 7 p.m.	23	24	25	26	27
28	29	30	MAY 2020 S M T W T F S 1 2 3 4 5 6 7 8 9 10 11 12 13 14 15 16 17 18 19 20 21 22 23 24 25 26 27 28 29 30 31	JULY 2020 S M T W T F S 1 2 3 4 5 6 7 8 9 10 11 12 13 14 15 16 17 18 19 20 21 22 23 24 25 26 27 28 29 30 31		

JULY 2020

www.nsd.org

SUNDAY	MONDAY	TUESDAY	WEDNESDAY	THURSDAY	FRIDAY	SATURDAY
	JUNE 2020 S M T W T F S 1 2 3 4 5 6 7 8 9 10 11 12 13 14 15 16 17 18 19 20 21 22 23 24 25 26 27 28 29 30	AUGUST 2020 S M T W T F S 1 2 3 4 5 6 7 8 9 10 11 12 13 14 15 16 17 18 19 20 21 22 23 24 25 26 27 28 29 30 31	1	2 FOURTH OF JULY BREAK DISTRICT OFFICES CLOSED	3 FOURTH OF JULY BREAK DISTRICT OFFICES CLOSED	4 FOURTH OF JULY
5	6	7	8	9	10	11
12	13 School Board Meeting 4 p.m.	14	15	16	17	18
19	20	21	22	23	24	25
26	27	28	29	30	31 *EID AL-ADHA	

* Begins at sundown of previous day/ends at sundown

AUGUST 2020

www.nsd.org

SUNDAY	MONDAY	TUESDAY	WEDNESDAY	THURSDAY	FRIDAY	SATURDAY
				JULY 2020 S M T W T F S 1 2 3 4 5 6 7 8 9 10 11 12 13 14 15 16 17 18 19 20 21 22 23 24 25 26 27 28 29 30 31	SEPTEMBER 2020 S M T W T F S 1 2 3 4 5 6 7 8 9 10 11 12 13 14 15 16 17 18 19 20 21 22 23 24 25 26 27 28 29 30	1
2	3	4	5	6	7	8
9	10 School Board Meeting 4 p.m.	11	12	13	14	15
16	17	18	19	20	21	22
23	24 School Board Meeting 7 p.m.	25	26	27	28	29
30	31					

* Begins at sundown of previous day/ends at sundown

Elementary	Address	Office Phone	Start/End Time	Wednesday Release	Attendance Phone
Arrowhead	6725 NE Arrowhead Drive, Kenmore, WA 98028	425.408.4000	9:25 a.m.–3:55 p.m.	9:25 a.m.–2:25 p.m.	425.408.4000
Bear Creek	18101 Avondale Road NE, Woodinville, WA 98077	425.408.4100	9:20 a.m.–3:50 p.m.	9:20 a.m.–2:20 p.m.	425.408.4100
Canyon Creek	21400 35th Avenue SE, Bothell, WA 98021	425.408.5700	9:10 a.m.–3:40 p.m.	9:10 a.m.–2:10 p.m.	425.408.5710
Cottage Lake	15940 Avondale Road NE, Woodinville, WA 98077	425.408.4200	9:30 a.m.–4:00 p.m.	9:30 a.m.–2:30 p.m.	425.408.4200
Crystal Springs	21615 9th Avenue SE, Bothell, WA 98021	425.408.4300	9:30 a.m.–4:00 p.m.	9:30 a.m.–2:30 p.m.	425.408.4300
East Ridge	22150 NE 156th Place, Woodinville, WA 98077	425.408.4400	9:20 a.m.–3:50 p.m.	9:20 a.m.–2:20 p.m.	425.408.4410
Fernwood	3933 Jewell Road, Bothell, WA 98012	425.408.4500	9:00 a.m.–3:30 p.m.	9:00 a.m.–2:00 p.m.	425.408.4500
Frank Love	303 224th Street SW, Bothell, WA 98021	425.408.4600	9:10 a.m.–3:40 p.m.	9:10 a.m.–2:10 p.m.	425.408.4600
Hollywood Hill	17110 148th Avenue NE, Woodinville, WA 98072	425.408.4700	9:25 a.m.–3:55 p.m.	9:25 a.m.–2:25 p.m.	425.408.4700
Kenmore	19121 71st Avenue NE, Kenmore, WA 98028	425.408.4800	9:05 a.m.–3:35 p.m.	9:05 a.m.–2:05 p.m.	425.408.4800
Kokanee	23710 57th Avenue SE, Woodinville, WA 98072	425.408.4900	9:30 a.m.–4:00 p.m.	9:30 a.m.–2:30 p.m.	425.408.4900
Lockwood	24118 Lockwood Road, Bothell, WA 98021	425.408.5800	9:30 a.m.–4:00 p.m.	9:30 a.m.–2:30 p.m.	425.408.5800
Maywood Hills	19510 104th Avenue NE, Bothell, WA 98011	425.408.5000	9:00 a.m.–3:30 p.m.	9:00 a.m.–2:00 p.m.	425.408.5000
Moorlands	15115 84th Avenue NE, Kenmore, WA 98028	425.408.5100	9:05 a.m.–3:35 p.m.	9:05 a.m.–2:05 p.m.	425.408.5100
Shelton View	23400 5th Avenue W, Bothell, WA 98021	425.408.5200	9:30 a.m.–4:00 p.m.	9:30 a.m.–2:30 p.m.	425.408.5200
Sunrise	14075 172nd Avenue NE, Redmond, WA 98052	425.408.5300	9:20 a.m.–3:50 p.m.	9:20 a.m.–2:20 p.m.	425.408.5300
Wellington	16501 NE 195th Street, Woodinville, WA 98072	425.408.5900	9:25 a.m.–3:55 p.m.	9:25 a.m.–2:25 p.m.	425.408.5900
Westhill	19515 88th Avenue NE, Bothell, WA 98011	425.408.5500	9:30 a.m.–4:00 p.m.	9:30 a.m.–2:30 p.m.	425.408.5500
Woodin	12950 NE 195th Street, Bothell, WA 98011	425.408.5400	9:10 a.m.–3:40 p.m.	9:10 a.m.–2:10 p.m.	425.408.5400
Woodmoor	12225 NE 160th, Bothell, WA 98011	425.408.5600	9:30 a.m.–4:00 p.m.	9:30 a.m.–2:30 p.m.	425.408.5610

Middle School	Address	Office Phone	Start/End Time	Wednesday Release	Attendance Phone
Canyon Park	23723 23rd Avenue SE, Bothell, WA 98021	425.408.6300	8:30 a.m.–3:05 p.m.	8:30 a.m.–1:35 p.m.	425.408.6310
Kenmore	20323 66th Avenue NE, Kenmore, WA 98028	425.408.6400	8:30 a.m.–3:05 p.m.	8:30 a.m.–1:35 p.m.	425.408.6410
Leota	19301 168th Avenue NE, Woodinville, WA 98072	425.408.6500	8:35 a.m.–3:10 p.m.	8:35 a.m.–1:40 p.m.	425.408.6510
Northshore	12101 NE 160th Street, Bothell, WA 98011	425.408.6700	8:30 a.m.–3:05 p.m.	8:30 a.m.–1:35 p.m.	425.408.6710
Skyview	21404 35th Avenue SE, Bothell, WA 98021	425.408.6800	8:30 a.m.–3:05 p.m.	8:30 a.m.–1:35 p.m.	425.408.6810
Timbercrest	19115 215th Way NE, Woodinville, WA 98077	425.408.6900	8:40 a.m.–3:15 p.m.	8:40 a.m.–1:45 p.m.	425.408.6910

High School	Address	Office Phone	Start/End Time	Wednesday Release	Attendance Phone
Bothell	9130 NE 180th Street, Bothell, WA 98011	425.408.7000	7:30 a.m.–2:35 p.m.	7:30 a.m.–1:05 p.m.	425.408.7010
Inglesmoor	15500 Simonds Road NE, Kenmore, WA 98028	425.408.7200	7:30 a.m.–2:35 p.m.	7:30 a.m.–1:05 p.m.	425.408.7210
North Creek	3613 191st PL SE, Bothell, WA 98012	425.408.8800	7:30 a.m.–2:35 p.m.	7:30 a.m.–1:05 p.m.	425.408.8810
Woodinville	19819 136th Avenue NE, Woodinville, WA 98072	425.408.7400	7:30 a.m.–2:35 p.m.	7:30 a.m.–1:05 p.m.	425.408.7410
SAS	22107 23rd Drive SE, Bothell, WA 98021	425.408.6600	7:55 a.m.–2:30 p.m.	7:35 a.m.–1:00 p.m.	425.408.6610

Special Programs	Address	Office Phone	Start/End Time	Wednesday Release	4/5 Day Program
Sorenson ECC	19705 88th Avenue NE, Bothell, WA 98011	425.408.5570	8:00–10:30 a.m. 12:00–2:30 p.m.	No School	M, T, Th, F
Northshore Networks	3330 Monte Villa Parkway, Bothell, WA 98021	425.408.4175	NA	NA	NA

Start/end times for 2019-20

As of this print date, Elementary Conferences early release times and Last Day of School release times are yet to be finalized. Please check with your school.

District Programs with No School on Wednesdays

Early Childhood Programs	Start/End Time
Cottage Lake Preschool	9:30 a.m.–12:00 p.m. 1:30–4:00 p.m.
Hollywood Hill ECEAP	10:20 a.m.–1:50 p.m.
Hollywood Hill Phonology	9:25–11:55 a.m. 1:25–3:55 p.m.
Kenmore Head Start	10:20 a.m.–1:50 p.m.
Adult Transition Programs	Start/End Time
ATP Networks	8:00 a.m.–1:30 p.m. 10:00 a.m.–3:30 p.m.
ATP Pathways	7:45 a.m.–2:20 p.m.



Emergency information

Emergencies such as inclement weather, power outages and hazardous road conditions can alter school schedules and affect bus transportation. The decision to close or delay schools is made by the superintendent as early as possible, usually around 5:30 a.m. Early dismissals will occur only if delay in dismissal significantly increases hazards. In the event an early dismissal is required, it is important that you have a plan for your student.

The decision to close schools or delay start times will be announced on www.flashalert.net, most radio and television stations and the district website. Families will be notified using the district's emergency messaging systems and mobile app. You may also call the district information line at 425.408.6001, beginning at 6 a.m., for school closure information.

Emergency make up days will be added to the end of the school year. If "Northshore School District #417" is not mentioned during the newscast, it means schools are open, with buses operating as normally as possible. If Northshore is mentioned, one of the following situations will be announced:

1. "2 HOURS LATE, NORMAL BUS ROUTES" MEANS:

- Buses start 2 hours late on normal routes
- School starts 2 hours late with regular full day dismissal time
- All before-school activities cancelled
- All partial programs cancelled
- No ATP Networks, Sorenson ECC, Head Start, Early Childhood Education and Assistance program, or preschool/pre-k programs, no in-district CTE satellite shuttles
- No out-of-district transportation
- No elementary band/orchestra
- No zero-period classes

2. "2 HOURS LATE, SNOW (LIMITED OR ALTERNATE) BUS ROUTES" MEANS:

- Buses start 2 hours late on snow (limited or alternate) routes. Visit www.nsd.org/bus to find snow routes.
- School starts 2 hours late with regular full day dismissal time
- All before-school activities cancelled
- All partial programs cancelled
- No ATP Networks, Sorenson ECC, Head Start, Early Childhood Education and Assistance program, or preschool/pre-k programs, no in-district CTE satellite shuttles
- No out-of-district transportation
- No elementary band/orchestra
- No zero-period classes

3. "ON TIME, SNOW (LIMITED OR ALTERNATE) BUS ROUTES" MEANS:

- Buses start at normal time on snow (limited or alternate) routes. Visit www.nsd.org/bus to find snow routes.

4. "CLOSED" MEANS:

- All district schools closed
- No after-school/evening activities, athletics, or band/orchestra

Snow (limited or alternate) bus route locations are available online at www.nsd.org/bus, or by contacting the Transportation Department, 425.408.7900. Changing conditions may cause the district to alter the status of school. Listen to radio and television for the latest information. Copies of suggested Walking Area Maps are available online at www.nsd.org/bus or by contacting the Transportation Department at transportation@nsd.org or 425.408.7900.

STAFF QUALIFICATIONS

Pursuant to Every Student Succeeds Act (ESSA), you may request the professional qualifications of your child's classroom teacher(s) or paraeducators by contacting your child's school. The Northshore School District will provide you with the information as soon as possible upon request. Thank you for your interest and involvement in your child's education.

STUDENT ASSESSMENT

Northshore School District uses a variety of assessments to fulfill state and federal accountability, to screen and progress monitor students, to inform instruction, and aid in academic placement guidance. State testing measures student achievement in Math and English Language Arts Common Core State Standards. Other content areas align with state learning standards. For the 2019-20 school year, the Washington Comprehensive Assessment Program will consist of the English Language Arts and Math Smarter Balanced Assessments and the Washington Comprehensive Assessment in Science (WCAS). For some identified IEP students, the Washington Access to Instruction and Measurement (WA-AIM) will be administered instead of Smarter Balanced/WCAS assessments. For English language learners, the English Language Proficiency Assessment for 21st Century Skills (ELPA21), or the World-Class Instructional Design and Assessment (WIDA) for highly impacted special education students, will be administered to determine their proficiency in English.

SMARTER BALANCED AND WASHINGTON COMPREHENSIVE ASSESSMENT OF SCIENCE (WCAS)

The Smarter Balanced Assessment assesses English Language Arts (ELA) and Mathematics and is required by state law for grades 3-8 and 10. The WCAS exam is administered in grades 5, 8, and 11. In addition, 10th graders take the ELA and Mathematics Smarter Balanced assessments to satisfy the state assessment graduation requirements. Students in high school who receive a level 3 or 4 on the Smarter Balanced assessments will not need to take placement exams for entrance to Washington State colleges and universities. Students who need a passing score have the opportunity for re-takes and/or alternatives to the test.

SCHOOL AND DISTRICT PERFORMANCE DATA

The Every Student Succeeds Act (ESSA), also known as the "No Child Left Behind Act of 2001" (NCLB), requires all schools, school districts and states to publish "report cards" highlighting their progress. They provide data on the Washington Comprehensive Assessment Program by gender, disability, economics, English proficiency, migrant/bilingual status, as well as school demographics, graduation and dropout rates for secondary students and school improvement plans. This information is available on the district website at www.nsd.org/schoolperformancereports.

STUDENT INJURIES AND INSURANCE COVERAGE

The health and safety of our students is one of our most important concerns. Even so, accidents may and do happen and the resulting medical bills (ambulance transport, surgery, etc.) can be very expensive. However, many families are unaware that the district does not carry insurance for these costs and cannot assume responsibility for them. Typically, if your child gets hurt during school activities you, as the parent or guardian, are responsible for any medical expenses. This includes students participating in athletics. Please make certain your family insurance plan covers athletic participation.

Annually, as a service, we provide information to all parents and guardians on an optional student accident insurance plan. This coverage plan is used by many school districts across the state and is administered by Myers-Stevens & Toohey, Inc. If you are interested in more information, please visit our website or you can go directly to the Myers website at myers-stevens.com (or phone them at 800.827.4695).

SAFE SCHOOLS ALERT

Students, staff, and members of the community can report concerns anonymously by using the SafeSchools Alert.

- Email: 1414@alert1.us
- Phone: 855.521.2665
- Text: 855.521.2665
- Online: <http://1414.alert1.us>

STUDENT SAFETY

The safety of staff, students and parents is Northshore's top priority. The district is committed to providing positive and productive school and work environments that are free from discrimination, harassment (including sexual harassment), intimidation or bullying. More information and resources regarding safe interaction with students is available on the district's website at nsd.org.

Northshore continues to take proactive measures to protect the safety of all students and staff. The district works closely with first responders to assure district plans are made in concert with all other local emergency preparedness plans. The district and all schools have safety and security plans in place.

REPORTING SUSPICIOUS ACTIVITY

Northshore students, staff or community members should report suspicious activities in and around our schools by calling 9-1-1 and the district's 24-hour emergency number, 425.485.9535. Anonymous reports can be made to the district by using the SafeSchools Alert.

DISTRICT MESSAGE SYSTEM

The district uses an automated message system to quickly send alerts to families. For major announcements and in the event of a school or district emergency, the district or school will likely call and send text messages as well as emailing and send an app notification. The system only works if your contact numbers and emails are current in the student information system. Please update your contact information annually with your child's school. You may also download our mobile app. Instructions are available on our website at www.nsd.org/mobileapp.

Student information

WEEKLY COLLABORATION SCHEDULE

The district will implement a weekly early release on Wednesdays beginning September 11, to support better instructional needs. Please refer to the school directory chart for early release times. Early release will occur on the following Wednesdays during the 2019-20 school year: September 11, 18, 25; October 2, 9, 16, 23, 30; November 6, 13, 20; December 4, 11, 18; January 8, 15, 22, 29; February 5, 12, 26; March 4, 11, 18, 25; April 1, 15, 22, 29; May 6, 13, 20, 27; and June 3.

REGISTRATION

Students may register year-round (except July) at the school they will be attending. Attendance area is based on residency address. Check the district website, www.nsd.org to determine your child's attendance area by clicking the "Schools" button, then "Find my school".

REQUIRED REGISTRATION DOCUMENTS: proof of child's birth date (birth certificate or passport), proof of residency, list of immunizations and withdrawal sheet or report card from previous school (grades 6-12 only). Students entering kindergarten or first grade must be five or six years old on or before Aug. 31 (dependent of grade entering.)

WAIVERS

OUT OF DISTRICT: Families who reside in another district and would like to attend Northshore School District must complete the choice transfer form available from their resident district. Families will need to reapply every year.

IN DISTRICT: Families who live within the geographic boundaries of the Northshore School District and want to attend a Northshore school other than their assigned neighborhood school must complete a waiver. The waiver form is available online at www.nsd.org/waivers or through the Office of Student Services, 425.408.7725.

VARIANCE: Families who live within the geographical boundaries of the Northshore School District and want to attend a school in another district must complete a release form. The release form is available online at www.nsd.org/waivers or through the Office of Student Services, 425.408.7725.

MCKINNEY-VENTO: The McKinney-Vento Act is federal legislation that has been in effect since 1987 to support homeless children and youth experiencing homelessness. The McKinney-Vento Act defines "homeless children and youth" as individuals who lack a fixed, regular and adequate nighttime residence. The intent of the McKinney-Vento Act is to ensure that homeless children and youth enroll and succeed in school. For more information about Northshore's Homeless Services, please visit www.nsd.org/homelesservices.

WHAT IS CHILD FIND?

The process of locating and evaluating children with disabilities is referred to as "Child Find." The Individuals with Disabilities Education Act (IDEA) requires all school districts to locate, evaluate and provide services for individuals age birth to 21, who may have a disability. Contact the principal or school psychologist at your home school if you:

- Have questions about whether your child has a disability
- Are concerned about your infant, toddler, or preschooler's development
- Know your child has a disability and are looking for appropriate educational services
- Would like to know how to help your school-age child succeed in school

You can also contact the district's Special Education office at 425.408.7733 for assistance. Any student or child whether or not enrolled in school may be referred for a special education evaluation by parents, district staff or other persons knowledgeable about the student. The school team will invite you to a meeting to discuss your concerns and devise a plan of action. A special education evaluation may be recommended at this time. If your child is not yet school age, please contact the Sorensen Early Childhood Center at 425.408.5570.

KINDERGARTEN

Parents should register their prospective kindergarten students for the 2020-21 school year at their designated elementary school beginning mid-January of 2020. Check your home school's website for specific registration dates and kindergarten events. Northshore will host a Kindergarten Orientation on March 18, 2020, 7:00 p.m. at the Northshore Performing Arts Center.

ENROLLING STUDENTS WITH MEDICAL CONDITIONS

Contact Student Health Services, 425.408.7728, if your child has a medical condition that requires:

- Medication at school that are injected (except epinephrine-auto-injectors), suppository, or nasal administration
- Assistance with a procedure during the school day, such as blood sugars, catheterization, or G-tube feedings

STUDENT MEDICATIONS/LIFE THREATENING CONDITIONS

When students are required to take medications during school, both over-the-counter and prescription, the school office must have:

- A medication authorization form signed by the parent and licensed health care provider. This form is available at your school or on the district website, www.nsd.org/medications.
- Medication delivered to school by the parent in a properly labeled prescription container or original bottle.

Students with a life-threatening condition (LTC) must, by law, have signed medication orders and a school nursing care plan in place before they attend school. School safety procedures for students with severe food allergies can be found at www.nsd.org/healthservices. Contact your school nurse for more information.

IMMUNIZATIONS

As of July 28, 2019, a new state law removes the personal and philosophical option to exempt children from the MMR vaccine required for school and child care attendance. Medical and religious exemptions are not affected by this new law. Based on this new law, parents/guardians will need to provide updated healthcare provider immunization paperwork at or before the start of the 2019-20 school year, starting on Wednesday, September 4, 2019. Children without a medical or religious exemption will need two doses of MMR vaccine to be allowed into school. In summary, personal/philosophical exemptions for MMR are no longer valid, students need healthcare provider verified proof of MMR vaccination by the first day of school, and children not compliant with state vaccine requirements may be excluded from school.

FOOD SERVICE

All schools offer breakfast and lunch. Menus are available online along with nutritional information at www.nsd.org/meals. Milk is included in the price of a full meal. Cartons of milk can also be purchased separately. A la carte items are also available at middle and high schools.

FREE AND REDUCED-PRICE BREAKFAST AND LUNCH

Parents whose income falls within guidelines set by the U.S. Department of Agriculture should apply for free or reduced-price meals. All students who qualify for reduced meals can receive a breakfast at no charge. Students K-3 who qualify for reduced meals will also be served lunch at no charge. Applications are available after July 1. You can apply online or download an application at www.nsd.org/meals or pick up a paper application from school or district's Food Services offices. To have an application mailed to you, call the Food Services Office at 425.408.7657.

PAYING FOR SCHOOL MEALS

Parents may pay online with a Visa (credit/debit), MasterCard or Discover card using a secure Internet site called PayPAMS. There is a \$1.95 charge for each payment transaction. To set up an online payment account, visit www.PayPAMS.com. There will be no charge for parents to sign their students up with PayPAMS in order to check student balances or view cafeteria purchases. Parents can pay by cash or check (made out to Northshore School District) at the school. There is no fee for paying with cash or check.

LOW BALANCE NOTIFICATIONS/ TRACKING MEAL BALANCES

Families with a registered PayPAMS account or those with the Northshore School District mobile app will receive low balance notifications by phone. You can track your student's meal balance with the Northshore School District Mobile App. The mobile app is free and available in the App Store or Google Play (iOS or Android only) by searching for "Northshore School District". The district's Mobile App webpage at www.nsd.org/mobileapp provides more information about this feature and offers step-by-step login instructions. You can also view your student's meal account balance, at no charge, with PayPAMS by going online or with the Mobile App at www.PayPAMS.com.

PAY ONLINE FOR STUDENT FEES, FINES, AND SALES

Parents may pay for student fees, fines and make other purchases online with a credit card using the Online Payment (TouchBase) program <https://schoolsales.nsd.org/>. Use your school-issued TouchBase username and password to access the program.

RIDING THE BUS TO SCHOOL

Transportation information and forms for the 2019-20 school year can be found online at www.nsd.org/bus. This information includes bus stop locator (Elink), special needs services, student safety and conduct forms, bus pass, Emergency/Snow, suggested walking area maps, and more. The bus stop locator, E-Link, helps you determine a student's assigned bus number, stop location and estimated pick-up time within the school service area. All students are required to be at their bus stop five (5) minutes in advance of the posted bus arrival time and Kindergarten and Special Ed students must be met by a parent/guardian at the bus stop. Bus stop locations will be available on Elink the end of August. Information for specialized programs (Preschool, HiCAP, Special Ed) can be located under the advanced tab. Waiver students are not assigned/eligible for transportation but may inquire about bus space availability using the Transportation Inquiry Form located on the website. Forms will be processed starting the end of October and may take several weeks before the assessment is completed. If you need assistance accessing bus stops and/or additional information, contact Transportation at transportation@nsd.org.

Información Del Estudiante

PROGRAMA SEMANAL DE COLABORACIÓN

El distrito implementará un día de colaboración a la semana, en el cual habrá salida temprana de clases. Estos días serán los días miércoles, a partir del 11 de septiembre, con el fin de brindar mejor apoyo a las necesidades docentes. Por favor refiérase a la tabla que se incluye en el directorio escolar para las fechas y horas de las salidas tempranas. En general, los miércoles programados en el año escolar 2018-19 son: Septiembre 11, 18, 25; Octubre 2, 9, 16, 23, 30; Noviembre 6, 13, 20; Diciembre 4, 11, 18; Enero 8, 15, 22, 29; Febrero 5, 12, 26; Marzo 4, 11, 18, 25; Abril 1, 15, 22, 29; Mayo 6, 13, 20, 27; y Junio 3.

INSCRIPCIONES

Los estudiantes se podrán inscribir durante todo el año (a excepción de Julio) a la escuela que estará asistiendo. El área de asistencia está basada en la dirección donde se reside. Llame al Departamento de Transporte al 425.408.7900 o consulte el sitio web de distrito en www.nsd.org/nsdtransportation, para determinar el área de asistencia de su hijo(a).

DOCUMENTOS REQUERIDOS PARA LA INSCRIPCIÓN: Comprobante de fecha de nacimiento del niño, acta de nacimiento o pasaporte, comprobante de domicilio, lista de vacunas o inmunizaciones y hoja de baja o boleta de calificaciones de la escuela anterior (para los grados del 6to al 12vo solamente). Los estudiantes que ingresen al jardín de niños (kindergarten) o al primer grado deberán tener cinco años o seis años cumplidos antes del 31 de agosto (dependiendo del grado a ingresar).

EXENCIONES (WAIVERS)

PARA ALUMNOS FUERA DEL DISTRITO: Las familias que residan en otro distrito y les gustaría asistir al Distrito Escolar de Northshore deberán completar el formulario de elección de transferencia (choice transfer) disponible en su distrito de residencia. Las familias necesitarán estar reapiando durante cada año.

PARA ALUMNOS EN EL DISTRITO: Las familias que viven dentro de los límites geográficos del Distrito Escolar de Northshore y quieren asistir a una escuela de Northshore diferente a la que tienen asignada por su zona de residencia, deberán completar una exención. Los formularios de las exenciones están en línea en www.nsd.org/waivers o en las oficinas de Servicios Estudiantiles al 425.408.7725.

ALUMNOS DEL DISTRITO PARA ASISTIR A OTRO DISTRITO (VARIANCE): Las familias que vivan dentro de los límites geográficos del Distrito Escolar de Northshore y quieren asistir a una escuela en otro distrito deberán completar el formulario de liberación (release form). Este formulario está disponible en línea en www.nsd.org/waivers o en las oficinas de Servicios Estudiantiles al 425.408.7725.

LEY MCKINNEY VENTO: La Ley McKinney-Vento es una legislación federal que define a "los niños y jóvenes sin hogar" como individuos que carecen de una residencia regular y adecuada para pasar la noche. El intento de esta ley es de asegurarse que los niños y jóvenes sin hogar se inscriban y tengan éxito en la escuela. Para mayores informes sobre los Servicios de Indigentes de Northshore, por favor consulte www.nsd.org/homelesssservices.

¿QUÉ ES "CHILD FIND"?

El proceso de localizar y evaluar a los niños con discapacidades se conoce como "Child Find". La Ley de Educación para Individuos con Discapacidades (IDEA) exige a todos los distritos escolares que localicen, evalúen y ofrezcan servicios para las personas con edades de recién nacidos hasta los 21 años, que cuenten con una discapacidad. Comuníquese con el director o psicólogo escolar en su escuela si usted:

- Tiene preguntas sobre si su hijo(a) tiene una discapacidad
- Está preocupado sobre el desarrollo de su infante, menor o alumno en preescolar
- Sabe que su hijo(a) tiene una discapacidad y está buscando servicios educativos adecuados.
- Le gustaría saber cómo ayudar a su hijo(a) en edad escolar a que le vaya bien en la escuela.

También puede contactarse con la oficina de Educación Especial para asistencia al 425.408.7733. Cualquier estudiante o niño esté o no inscrito en la escuela puede ser remitido por los padres, personal escolar u otra persona conocedora de su estudiante para que le hagan una evaluación para educación especial. El equipo escolar lo invitará a tener una reunión para platicar sobre sus inquietudes y formular un plan de acción. Una evaluación de educación especial podrá ser recomendada en dicha reunión. Si su hijo(a) no tiene la edad escolar, por favor contáctese con Sorensen Early Childhood Center al 425.408.5570.

KINDER

Los padres deberán inscribir a sus futuros alumnos prospectos para el kinder para el año escolar 2020-2021 en su escuela primaria designada a partir de mediados de enero del 2020. Las fechas específicas serán publicadas en línea en nsd.org para diciembre de 2018. Northshore llevará a cabo una sesión de Orientación para el Kinder el 18 de marzo de 20120 en el Centro de Artes Escénicas (Performing Arts Center) de Northshore.

INSCRIPCIÓN DE ESTUDIANTES CON CONDICIONES MÉDICAS

Comuníquese con los Servicios de Salud Estudiantil (Contact Student Health Services) al 425.408.7728, si su hijo(a) tiene una condición médica que requiera de:

- Medicamento en la escuela que sea inyectado (excepto los auto inyectores de epinefrina), los supositorios o la administración nasal
- Asistencia con un procedimiento durante el día de clases, como el azúcar en la sangre, cateterismo o aplicación de tubos gástricos para alimentación (G-tubes).

MEDICAMENTO DEL ESTUDIANTE/ CONDICIONES DE SALUD POTENCIALMENTE MORTALES

Cuando se requiere que un estudiante tome medicamento durante el horario escolar, ya sea con o sin prescripción médica, la oficina escolar deberá tener:

- Un formulario de autorización médica firmado por sus padres y un profesional de la salud con licencia. Este formulario está disponible en su escuela o en el sitio web del distrito en www.nsd.org/medications.
- El medicamento entregado a la escuela por parte de los padres deberá estar en un frasco adecuadamente etiquetado o en su envase original.

Los estudiantes con condiciones de salud potencialmente mortales (LTC) deben, por ley, tener órdenes médicas firmadas y un plan de cuidado de la enfermería escolar antes de que inicien su asistencia a la escuela.

Los procedimientos de seguridad escolar para los estudiantes con alergias muy severas pueden ser consultados en la página web en Health and School Nurse Services/Food Allergies, o contactándose con la enfermera escolar para mayores informes.

VACUNACIÓN

A partir del 28 de julio de 2019, una nueva ley estatal quita la opción de excepción personal y filosófica de vacunación para los niños para las vacunas MMR requerida para la asistencia a las escuelas y a los cuidados infantiles. Las excepciones médicas y religiosas no son afectadas por esta nueva ley. Con este nuevo decreto, los padres/tutores necesitarán proporcionar documentos actualizados de las inmunizaciones de su proveedor de salud antes de que comience el ciclo escolar 2019-20, que es el miércoles 4 de septiembre de 2019. Los niños sin una excepción médica o religiosa necesitarán dos dosis de la vacuna MMR para poder ser admitidos en la escuela.

En resumen, las excepciones personales y filosóficas para las vacunas MMR ya no son válidas, y los estudiantes necesitarán comprobantes de su vacunación de MMR para antes del primer día escolar. Los niños que no cumplan con este requisito estatal podrán ser excluidos de no asistir a la escuela.

SERVICIOS DE ALIMENTOS

Todas las escuelas ofrecen desayunos y almuerzos (lonches). Los menús se encuentran disponibles junto con información nutricional en www.nsd.org/meals. La leche se incluye dentro del precio de la comida, aunque tanto la leche como los jugos pueden también ser comprados por separado. Los productos "a la carte", o sea a la carta, están disponibles en las secundarias y preparatorias.

DESAYUNOS Y LONCHES GRATUITOS Y DE PRECIOS REDUCIDOS

Los padres que tengan ingresos que cumplan con los lineamientos establecidos por el Departamento de Agricultura de EEUU, deberán aplicar para obtener comidas gratuitas o de precios reducidos. Todos los estudiantes que califiquen para los precios reducidos, podrán recibir un desayuno sin costo alguno. Los estudiantes en grados K al 3ro que califiquen para precios reducidos en comidas también se les servirán lonches sin costo alguno. Las aplicaciones estarán disponibles a partir del 1 de julio. Puede aplicar en línea o descargar la solicitud en www.nsd.org/meals, o recoger una versión impresa en papel en su escuela o en las oficinas distritales de Servicios de Alimentos (Food Services). Para que le enviemos una solicitud por correo, llame a Servicios de Alimentos al 425.408.7657.

PARA HACER LOS PAGOS DE LAS COMIDAS ESCOLARES

Los padres pueden hacer sus pagos en línea con una tarjeta Visa (crédito o débito), MasterCard o Discover usando un sitio de internet seguro denominado PayPAMS. Se aplican cargos de \$1.95 por cada transacción de pago. Para establecer una cuenta de pagos en línea, visite www.PayPAMS.com. Los padres pueden hacer sus pagos en efectivo o con cheque (a nombre de Northshore School District) directo en la escuela. No hay cargos por hacer pagos en efectivo o con cheque.

NOTIFICACIONES POR BALANCES BAJOS/ MONITOREO DE BALANCES EN COMIDAS

Las familias con una cuenta registrada de PayPAMS o las que cuenten con la aplicación móvil de Northshore School District, recibirán notificaciones cuando su balance esté bajo. También podrán monitorear el balance de sus estudiantes con la aplicación móvil. Esta aplicación es gratis y está disponible en App Store o en Google Play (iOS o Android únicamente). Busque "Northshore School District". La página web para la App móvil está en www.nsd.org/mobileapp, la cual ofrece más información sobre sus características y ofrece instrucciones paso a paso para ingresar. También puede consultar su balance de comidas, sin costo alguno, con PayPAMS en línea o con la App móvil en www.PayPAMS.com.

PAGOS EN LÍNEA PARA CUOTAS ESTUDIANTILES, MULTAS Y VENTAS

Los padres podrán hacer sus pagos de cuotas estudiantiles, multas y hacer compras en línea con una tarjeta de crédito usando el programa Online Payment (TouchBase) en <https://schoolsales.nsd.org/>. Utilice su nombre de usuario y contraseña proporcionados por la escuela para TouchBase para acceder al programa.

VIAJANDO EN EL AUTOBÚS ESCOLAR

La información y formularios de transporte para el año escolar 2019-20 pueden ser consultados en www.nsd.org/bus. Esta información incluye el localizador de las paradas (Elink), los servicios de necesidades especiales, los formularios de seguridad y conducta infantil, los pases de autobús, emergencia/nieve, mapas de áreas sugeridas para caminar y más. El localizador, e-link, ayuda a determinar el número de autobús asignado al estudiante, paradas de autobuses y el tiempo estimado para recoger al estudiante dentro del área de servicio escolar. Todos los estudiantes requieren estar cinco (5) minutos antes de la hora marcada de llegada en la parada del autobús, y los estudiantes del kinder y educación especial deberán ser recibidos por sus padres o tutores en la parada del autobús. Las paradas de autobús están disponibles en Elink a finales de agosto. La información para los programas especializados (preescolar, HiCAP, educación especial) pueden ser localizados en la pestaña "advanced". Los estudiantes con exención (waiver) no están asignados o califican para el transporte, pero pueden indagar sobre la disponibilidad de espacio usando el formulario de consulta de transporte (inquiry form) localizada en este sitio web. Los formularios serán procesados a finales de octubre antes de que las evaluaciones sean completadas. Si necesita asistencia para acceder las paradas de autobús y/u otra información adicional, contacte a transportation en transportation@nsd.org.

Release of student information

Federal law prohibits schools from releasing student information without permission, except for what is termed "directory information." Directory information about students may be released by the District without parental consent. The District will not release directory information for commercial purposes.

Directory information includes the following: name; personal residence and email addresses; telephone listings; date of birth, most recent/previous school attended; dates of attendance; enrollment status; major field of study; image (photo, video, audio); recognition, diplomas and awards received; participation in officially recognized activities and sports; and weight and height of members of athletic teams. Release of student directory information is guided by Board Policy 3250.

Images of students are sometimes used in printed, web or video-based district or school-produced materials or for use by the news media. Published photos in yearbooks, student/school newspapers, school handbooks, etc., and the electronic media, including websites, are considered public domain and can be reproduced by the media.

Parents/guardians who do not want their student's directory information released must complete and return a Permission to Withhold Directory Information form to their child's school by October 1. The form is available at www.nsd.org and in school offices. This form should be submitted annually to your student's school office on or before October 1 of the current school year. Forms will be accepted after the deadline, but the District cannot be responsible for the release of Directory Information if the Permission to Withhold Student Information form is received after the October 1 deadline of the current school year. Extractions of Directory Information to non-district persons or outside organizations will not be processed between the first day of school and October 1 of the current school year.

The withhold directory restriction will remain on your student's record for the current school year. Families will have the opportunity to subscribe yearly. The district will honor your request to withhold the information as listed, but cannot assume responsibility for contacting you for subsequent permission to release that information. Should you initially decide to withhold Student Directory Information, you may authorize the cancellation of your request at any time during the current school year.

Please use one form for each child in your household. Forms can be downloaded from the district website, www.nsd.org, or obtained in the office of all schools. Forms must be submitted each year your child is enrolled. Students who are 18 years or older may submit this notification themselves.

OBTAINING STUDENT RECORDS

Parents and eligible students have the right to:

1. Inspect and review the student's education records;
2. Request the amendment of student education records to ensure that they are not inaccurate, misleading or otherwise in violation of the student's privacy or other rights;
3. Consent to most disclosures of personally identifiable information from education records; (see release of student information) except to the extent that the Family Education Rights and Privacy Act (FERPA) and the regulations in this part authorize disclosure without consent. One exception, which permits disclosure without consent, is disclosure to school officials with legitimate educational interests. A school official is a person employed by the District as an administrator, supervisor, instructor, or support staff member (including health or medical staff and law enforcement unit personnel); a person serving on the School Board; a person or company with whom the District has outsourced services or functions it would otherwise use its own employees to perform (such as an attorney, auditor, medical consultant or therapist.) A school official has a legitimate educational interest if the official needs to review an education record in order to fulfill his or her professional responsibility;
4. File a complaint with the U.S. Department of Education concerning alleged failures to comply with the Family Education Rights and Privacy Act (FERPA);
5. Obtain a copy of School Board Policy 3600 Student Records. A copy of this policy is available by request at any school or the offices of the Regional Assistant Superintendents located at the district's Administrative Center, 3330 Monte Villa Parkway, Bothell, WA 98021-8972.

DISTRICT NEWS AND INFORMATION

Northshore School District has resources to update you on the latest district news and information. Please contact the Communications Department, 425.408.7670, if you have any questions or need additional assistance.

- **District Information Line** 425.408.6001
- **Bilingual Message Line** 425.408.6014
- **Spanish Information Line** 425.408.6024
- **District website** nsd.org
- **District E-newsletter** nsd.org/connections
- **District Newsletter** nsd.org/community
- **District E-fliers** nsd.org/efliers
- Follow us on Facebook and Twitter

RESOLVING A CONCERN

Concerns can be most accurately and efficiently addressed by those closest to the problem. The board encourages you to follow the steps outlined below, proceeding to the next level as necessary. If you need help determining the appropriate person to call, please call the Communications Department at 425.408.7670

SCHOOL RELATED CONCERN

Discuss with the teacher/staff member involved

Principal

Regional Assistant Superintendents,
Superintendent or designee

Present to the School Board through the
formal citizen's complaint procedure*

DISTRICT CONCERN

Appropriate District Department

Superintendent or designee

Present to the School Board through the
formal citizen's complaint procedure.*

**Forms available in the Superintendent's Office*

Using technology at school

We live in a global and digital world—a world changed by technology and new ideas about how we communicate with one another and exchange information. As a result, students must develop the research, information fluency, and technology skills that will allow them to be successful, safe and ethical in this digital world. For this reason, students are provided computer access privileges at school, as well as access to the Internet, email, digital communication and collaboration tools, online learning spaces and electronic educational resources. These resources, tools and equipment are essential to teaching and learning.

The guidelines for responsible use of these tools are outlined in School Board Procedure 2022P. (see the procedure at <https://goo.gl/mPQ1qD>.) Standard applications and accounts are configured for student use, but are not limited to:

ACTIVE DIRECTORY

Each student is given an account in Active Directory that they will use to log on to any district-owned computer within the district network and provide them with access to a cloud-based folder where their important documents and projects can be stored. These credentials are also used to access our Library Catalog, Google Apps for Education (GAPE) environment and other educational systems.

NORTHSHORE GOOGLE APPS FOR EDUCATION ENVIRONMENT

This education-focused Google Apps environment is hosted by Google and managed by the district. This collection of online applications provides students with a Google email account, calendar and access to GoogleDrive, where students can create, share and publish documents, spreadsheets, presentations and other artifacts for their learning. The district creates and manages user accounts, manages access to applications and email based on grade level organizations, and manages permissions. Email accounts the district creates for elementary students can only communicate with other email accounts created by the district. GAPE accounts are covered by more restrictive data privacy practices

than “regular” Google accounts, including a restriction on advertising and the use of student data for advertising purposes. At any time, a student’s account can be reviewed for content and accounts should only ever be used for school-related work.

ONLINE CURRICULUM SYSTEMS

Most of the curriculum adopted in the district is accompanied by or depends on access to an online system where content and assessments are stored. Many of these systems require students to have a unique account created for them which allows them to access supplemental video content, take quizzes and strengthen their understanding about the ideas in the content area. For district-wide curriculum, the district creates and manages these accounts. In these cases, the terms of use and privacy policies are reviewed before providing any student account data to the vendor.

Under the Federal Children’s Internet Protection Act (CIPA), the district is required to filter Internet access and to teach online safety. The district takes your student’s safety and privacy very seriously and makes every effort to supervise and monitor student technology use. We use Internet filtering software to block access to content that is obscene, pornographic or harmful to minors. We provide instruction to all students in the area of Digital Citizenship through use of district-approved curriculum from Common Sense Media.

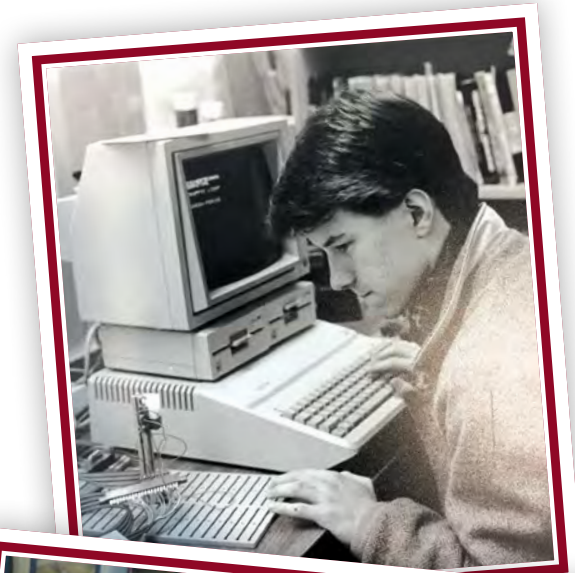
Given all of these factors, parents or guardians still do have the right to terminate their student’s access to electronic tools and resources by signing the District Technology Opt-Out form. <http://bit.ly/31QS5KD> (El formulario también está disponible en español <http://bit.ly/2LdEVS8>) A printed copy of the form can be obtained from your school’s office manager.

If you do not want your student to use district technology resources, please be aware that your decision to eliminate access to these tools may significantly affect your student’s ability to work collaboratively with his or her peers on class assignments and projects, and may impact the development of skills necessary to live and work in this increasingly digital world.

Only complete the form if you choose for your student NOT to use district technology. Return the signed form to your school and schedule an appointment to discuss this with your principal or designated school administrator. After meeting with your

administrator, the opt-out request will remain in effect for one school year, and expires at the end of this school year. To keep this opt-out request in effect, you must complete a new form every year.

If no documentation is on file, it will be assumed that permission has been granted for access to the Internet, GAPE (including email), Online Curriculum services, and other online applications and services that have been selected for use by the district, your child’s school, or your child’s teacher. Questions about the opt-out request can be directed to your school’s principal.



District programs

ADVANCED PLACEMENT (AP)

Advanced Placement classes provide college-level coursework for any student with the desire and willingness to work hard. Any student with the desire and willingness to work hard may enroll in the variety of AP classes offered at each high school. These courses provide rigor in a student's schedule and thorough coverage of a content area that students may find particularly interesting. AP courses are open enrollment and students may self-select classes to take each year. Completion of two AP courses satisfies a high school graduation requirement for students in the graduating class of 2016 and beyond.

ATHLETICS

Information for both middle and high schools, driving directions and participation forms are available to download on the district website, www.nsd.org/nsdathletics.

CAREER AND COLLEGE READINESS / 425.408.7711

The Career and College Readiness (formerly Career and Technical Education) program partners rigorous core curriculum with exploration of career pathways using industry-based standards to prepare students for postsecondary education and to meet the dynamic demands of the global economy. Students have the opportunity to explore career pathways in arts and communications, business and marketing, social services and education, science and technology, health services, and technology preparation. Please contact the counseling office of your child's school for more information.

COLLEGE IN THE HIGH SCHOOL

Students have the opportunity to take college courses taught by high school teachers and earn college credit at the same time from area colleges such as Cascadia College or the University of Washington. Students who choose to take courses for college/university credit pay the college/university fee and meet all content requirements in addition to the high school course content. Students earning college/university credits will receive a grade and transcript from the college/university. Specific courses vary by high school. Please contact a high school counselor for details on College in the High School courses. Completion of two College in the High School courses satisfies a high school graduation requirement for students in the graduating class of 2016 and beyond.

DUAL LANGUAGE PROGRAM / 425.408.5400

Woodin Elementary School provides a dual language program where students from different language backgrounds learn English and Spanish together through intentionally planned instruction. The program follows a 50-50 model, meaning that starting in kindergarten, 50% of instruction occurs in Spanish and the other 50% is delivered in English. Approximately half of our students come from dominant Spanish speaking families, with the other half from dominant English speaking families. Students learn in an integrated setting serving as language models for each other and learning from one another. Our goal is for students to develop grade level competency while becoming bilingual, biliterate and bicultural. Please contact Principal Dawn Bowers dbowers@nsd.org, ELL Coach Sarah Phillips sphillips@nsd.org or Dual Language Representative Elizabeth Jette ejette@nsd.org, 425.408.5400, for more information about the program and enrollment process.

HIGHLY CAPABLE PROGRAM / 425.408.7713

The Northshore School District Highly Capable Program provides a continuum of services for students identified as most highly capable in grades K-12. Selection is based on multiple measures, which may include academic achievement in reading comprehension and/or applied math concepts, performance on cognitive abilities tests, and creativity measures. Service options vary at different grade levels and are based on the areas in which a student is found eligible. For more information, please visit the Highly Capable website at www.hicap@nsd.org.

INTERNATIONAL BACCALAUREATE (IB) PROGRAM / 425.408.7355

The district IB Program located at Inglemoor High School is a rigorous, internationally recognized course of study open to all interested students in the Northshore School District. IB is designed to provide students with a foundation of in-depth learning in six subject areas. During the final two years of high school, students are uniquely challenged to meet high standards in every class. Expectations include self-directed and disciplined study, research, critical analysis of information and effective oral and written communication.

MIDDLE SCHOOL CHALLENGE PROGRAM

The Middle School Challenge Program provides a rigorous curriculum in English, Math, Science and Social Studies for students in grades 6-8. All sixth-graders will be enrolled in Challenge English/Language Arts, Math and Science. Students' math enrollment will match their current math trajectory. Challenge courses are considered open enrollment for students in seventh- and eighth-grade, therefore any student with the curiosity for learning and a willingness to work hard may self-select Challenge courses during the Middle School course registration process each spring.

NORTHSHORE NETWORKS / 425.408.4175

Northshore Networks is a teacher, parent and student contract partnership delivered in a once-a-week consulting model. Northshore Networks serves grades 1-12. For grades 7-12, additional academic support is provided in required weekly and bi-weekly classes. Teachers collaborate with students and parents to design and implement a customized curriculum consistent with district and state guidelines, high school graduation requirements and each student's individual learning needs. Northshore Networks is housed at the NSD Administrative Center at 3330 Monte Villa Pkwy, Bothell, WA 98021.

PACE-PARENTS ACTIVE IN COOPERATIVE EDUCATION

PACE is a family-based, alternative program for grades 1-5 emphasizing parent involvement. On a space-available basis, PACE is open to children whose parents commit to a minimum of 80 hours program assistance a year, per family, to support classrooms and student enrichment. An information night for the 2020-21 school year will be held on Oct. 22, 2019, 7 p.m.

RUNNING START

High school juniors and seniors who show a readiness for college-level classes have the opportunity to attend a community college and receive high school and college credit at the same time under the Running Start program. Interested students should contact their high school counselor for more information.

SECONDARY ACADEMY FOR SUCCESS / 425.408.6600

Secondary Academy for Success (SAS) is Northshore's options high school, grades 9-12, for students seeking an alternative to the traditional secondary school. SAS is a highly successful program that helps students in a small school setting complete the required courses consistent with district and state guidelines, and all high school graduation requirements. Service learning, student leadership, environmental awareness, music and business partnerships and career integration highlight the SAS learning program. SAS is located at 22107 23rd DR S.E., Bothell, WA 98021.

SPECIAL EDUCATION / 425.408.7733

The Special Education program serves students from birth through twenty-one years of age. Instructional and support services are delivered by special education teachers, school psychologists, speech language pathologists, behavior specialists, occupational therapists, physical therapists, and educational assistants. In compliance with federal and state law, students with disabilities are served in the least restrictive environment to the maximum extent possible.

SORENSEN AND COTTAGE LAKE SPECIAL NEEDS PRESCHOOL PROGRAMS / 425.408.5570

Sorenson and Cottage Lake special needs preschools provide developmentally appropriate programs and services for eligible students ages 3-5 who may have a developmental delay in motor, communication, cognitive, social-emotional or adaptive skills.

STEM-SCIENCE, TECHNOLOGY, ENGINEERING AND MATHEMATICS

Students have the opportunity to explore STEM courses in high demand fields of study such as environmental technology/renewable energy, biomedical sciences, engineering, information technology and robotics through the Career and College Readiness Program. Acquisition of core skills in exploration, problem solving, discovery, critical thinking, teamwork and innovation is the focus of STEM programs. Please contact the counseling office of your child's school for more information.

TECH PREP

The Career and Technical Education (CTE) program provides courses at each high school that offer Tech Prep credit. These CTE courses combine academic and professional strands and are designed to give students a head start on the way to a community or technical college degree. Please contact a high school counselor or career specialist about details on Tech Prep credit programs. Completion of two Tech Prep courses satisfies a high school graduation requirement for students in the graduating class of 2016 and beyond.

Partnerships support student achievement

WHEN PARENTS PARTICIPATE, CHILDREN SUCCEED

Research shows that the more families participate in the education of their children, the better those students achieve in school. When schools, families and communities work together to support student learning, children generally achieve better grades and test scores, have better attendance, complete homework, show higher aspirations and motivation toward school, make better transitions and are more likely to graduate.

Here are some ways you can help your child be successful academically:

- Make education a priority.
- Ensure children attend school regularly, on time and prepared to learn.
- Establish regular routines at home that support good sleep, a healthy diet and daily exercise.
- Incorporate homework into the daily routine and provide a comfortable place for your child to study that is free from distractions.
- Limit the use of TV and video games.
- Be available to listen, talk, read and assist with homework.
- Show interest in schoolwork and out-of-school activities.
- Attend parent-teacher conferences and school events.
- Set standards of respectful behavior and value hard work, learning and responsibility.
- Establish clear, ongoing two-way communication with the school, especially if your child is having trouble with homework or not doing well on tests or progress reports.
- Volunteer at school to share your interests, skills and time.
- Offer praise and recognition for progress and accomplishments.

VOLUNTEERS MAKE A DIFFERENCE

Parent and community involvement in a student's education contribute to a successful school experience and has a positive impact on student achievement. We welcome parent and community volunteers to help as tutors, mentors, classroom speakers, committee advisors or assistants on special projects.

HOW CAN I HELP?

- Work with small groups with reading, writing, math, spelling, etc.
- Work with individual children—practice facts, read, assist with writing, computers
- Share personal talents, skills, interests or careers
- Provide mentor support to a student
- Become an elementary school art docent

HOW DO I START?

Individuals who volunteer for the Northshore School District need to complete the volunteer application. Parents and family members, please contact your child's school. Community members, please contact the partnerships and volunteer coordinator at partnerships@nsd.org or 425.408.7673. More information is available at <https://www.nsd.org/get-involved>.

PTA/PTSA

Each Northshore school has a PTA or PTSA made up of volunteers working for all children. These volunteers provide a wide variety of programs and activities to enhance student learning and encourage parent involvement. Visit the Northshore Council PTSA website, <http://www.northshorecouncilptsa.org>, for more information.

BUSINESSES MAKE GREAT PARTNERS

Higher standards in schools require advocates throughout the community. Our business, faith-based and civic representatives recognize that strong schools strengthen our community.

Our community partners demonstrate support for our schools through a variety of ways:

- Provide classroom presentations and speakers for career awareness
- Serve as mentors to students at school
- Donate funds, resources and employee hours
- Support school efforts to meet higher performance goals
- Ensure legislative support for consistent school funding, facilities and teacher training
- Welcome students to learn, observe, intern or complete service-learning projects

We encourage everyone in our community to become an active participant in education. For more information, contact the partnerships and volunteer coordinator at partnerships@nsd.org or 425.408.7673.

NORTHSHORE SCHOOLS FOUNDATION

Northshore Schools Foundation fills in the gaps by funding relevant and impactful programs and services that promote engaged learning and lifelong success for all Northshore students, at every school in the district. The Northshore Schools Foundation is a non-profit charitable fundraising organization that operates separately from NSD thanks to generous contributions from parents, community members, local businesses and corporations. Learn more at www.nsdfoundation.org.

SUPPORT YOUR CHILD'S EDUCATION - VOTE

Use your right to vote and help make a positive impact on your child's education. You can register to vote by going to the following website: <http://www.sos.wa.gov/elections/myvote/olvr.html>.

KEY ELECTION DATE: NOVEMBER 5 - GENERAL ELECTION

To be eligible to vote, you must be registered at least 30 days in advance of an election. Your application must be postmarked by the 30-day cutoff or it will not become effective until after the election. Remember to vote.

ACCOMMODATIONS STATEMENT

The Northshore School District will make every effort to provide accessibility to events, meetings and programs to individuals with disabilities. Please contact the building principal where the activity is occurring or Director of Human Resources, ADA officer, at 425.408.7622 to request special accommodations.

EQUAL OPPORTUNITY EMPLOYER

Northshore School District will provide equal employment opportunity and treatment for all applicants and staff in recruitment, hiring retention, assignment, transfer, promotion and training. Such equal employment opportunity shall be provided without discrimination with respect to age, sex, marital status, sexual orientation including gender expression or identity, race, creed, religion, color, national origin, honorably discharged veteran or military status, the presence of any sensory, mental, or physical disability or the use of a trained dog guide or service animal by a person with a disability. The following employee(s) have been designated to handle questions and complaints of alleged unlawful discrimination: Director of Human Resources (Title IX, ADA, and Civil Rights Compliance), Director of Student Services (Section 504), 3330 Monte Villa Parkway, Bothell, WA 98021, (425) 408-6000.



2018-19 PTSA leadership

Important telephone numbers and websites

DISTRICT INFORMATION:

Main District Number	425.408.6000
Information Line (recorded)	425.408.6001
Bilingual Message Line	425.408.6014
Spanish Language Information Line	425.408.6024
Athletic Fields Rain-Out-Line	425.408.6020
Website	www.nsd.org

DISTRICT DEPARTMENTS

Athletics	425.408.7624
Alternative Programs	
■ Northshore Networks	425.408.4175
■ Secondary Academy for Success	425.408.6600
■ Sorenson Early Childhood Center	425.408.5570
■ Summer School, Secondary (May-Aug.)	425.408.6011
Business and Finance	425.408.7630
Communications	425.408.7670
Community Partnerships/Volunteers	425.408.7673
Early Childhood Education	425.408.5570
Elementary Education	425.408.7705
Equity and Diversity	425.408.7722
Facilities Rental	425.408.7810
Food Services	425.408.7654
Health Services	425.408.7728
Human Resources	425.408.7601
Instructional Support & Services	
■ State Assessments	425.408.7665
■ Career & College Readiness	425.408.7711
■ Curriculum, Instruction & Assessment, K-5	425.408.7714
■ Curriculum, Instruction & Assessment 6-12	425.408.7712
■ Highly Capable Program Services	425.408.7713
■ Instructional Technology	425.408.7755
■ Music Programs (elementary before-school)	425.408.XXXX
Safety and Security	425.408.7745
Secondary Education	425.408.7703
Special Services	425.408.7709
■ Categorical Programs	425.408.7709
■ Special Education (elementary)	425.408.7736
■ Special Education (secondary)	425.408.7735

Student Services/Discipline	425.408.7725
Superintendent	425.408.7701
Support Services	425.408.7801
Technology	425.408.7750
Transportation	425.408.7900

ACTIVITIES & YOUTH ORGANIZATIONS

Bothell Cougar Junior Football	bcjfa.org
Scouts BSA	206.725.5200
Boys & Girls Club, Kirkland	425.827.0132
Camp Fire	206.461.8550
4-H - King County	206.263.1923
4-H - Snohomish County	425.357.6044
Girl Scouts, Western Washington	800.541.9852
Little Leagues	
■ North Lake	northlakell.org
■ North Bothell	northbothelllittleleague.org
■ Northshore	northshorell.com
■ Woodinville	woodinvillelittleleague.com
Northshore Girls Slowpitch and	
Softball Assn.	info@ngssa.com
Northshore YMCA	425.485.9797
Northshore Youth Basketball Assn.	nybahoops.com
Northshore Youth Soccer Assn.	425.486.5106
.....	office@northshoresoccer.org

GOVERNMENT

City of Brier	425.775.5440
City of Bothell	425.806.6100
City of Kenmore	425.398.8900
City of Woodinville	425.489.2700
King County Council	206.477.1000
King County Sheriff	206.296.3311
Snohomish County	425.388.3411
Snohomish County Sheriff	425.388.3393

HUMAN SERVICES

Information and referrals to health and	
human services	211
Community Resources	nsd.org/communityresources
ARC of King County	206.364.6337
Health Point	425.486.0658
Center for Human Services	206.362.7282
Child Care Resources/Seattle	206.329.1011
Community Health Access Program	206.296.0100
.....	800.756.5437

EvergreenHealth	
■ Kirkland	425.899.1000
■ Woodinville	425.481.6363
Hopelink, Kirkland	425.889.7880
King County Health Dept.	206.296.4600
Northshore Family Center	425.205.2004
Northshore Public Health Center	206.263.2850
Northshore Senior Center	425.487.2441
Northshore Youth & Family Services	425.485.6541
Snohomish Health District-Healthy Kids	425.339.5200
Within Reach	206.284.2465
Woodinville Fire & Life Safety	425.483.2131

LIBRARIES

Bothell	425.486.7811
Kenmore	425.486.8747
Kingsgate	425.821.7686
Woodinville	425.788.0733

NORTHSHORE COUNCIL PTSA

Northshore Council PTSA	northshorecouncilptsa.com
-------------------------------	--

SEPAC

SEPAC	sepacnsd.org
-------------	--

NORTHSHORE SCHOOLS FOUNDATION

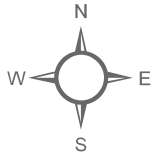
Supports Northshore student learning opportunities	425.408.7680
--	--------------

PARKS

Bothell (City of) Parks & Recreation	425.806.6760
King Co. Parks	206.296.4232
Redmond (City of) Parks	425.556.2300
Woodinville (City of) Parks & Recreation	425.489.2700
Kenmore (City of) Parks & Recreation	425.398.8900

EMERGENCY & CRISIS

Emergency Police, Fire, Medical Aid	911
Children Protective Services	800.379.3395
.....	206.691.2300
Lifewire (Domestic Violence Hotline)	800.827.8840
.....	425.746.1940
King County Crisis Clinic	211 / 206.461.3222
Washington Poison Center	800.222.1222
Snohomish Co. Care Crisis Line	425.258.4357
.....	800.584.3578



EDMONDS DISTRICT

EVERETT DISTRICT

SNOHOMISH DISTRICT

Administrative/Resources

- 96 Administration Building
- 99 Support Services
- 86 Transportation Center

High Schools

- 71 Bothell High School
- 72 Inglemoor High School
- 74 North Creek High School
- 81 Northshore Networks
- 59 Secondary Academy for Success
- 73 Woodinville High School

Middle Schools

- 43 Canyon Park Middle School
- 42 Kenmore Middle School
- 46 Leota Middle School
- 47 Northshore Middle School
- 44 Skyview Middle School
- 45 Timbercrest Middle School

Elementary Schools

- 1 Arrowhead Elementary
- 25 Bear Creek Elementary
- 20 Canyon Creek Elementary
- 3 Cottage Lake Elementary
- 4 Crystal Springs Elementary
- 14 East Ridge Elementary
- 23 Fernwood Elementary
- 19 Frank Love Elementary
- 22 Hollywood Hill Elementary
- 5 Kenmore Elementary
- 15 Kokanee Elementary
- 9 Lockwood Elementary
- 6 Maywood Hills Elementary
- 10 Moorlands Elementary
- 11 Shelton View Elementary
- 31 Sorenson Early Childhood Ctr
- 24 Sunrise Elementary
- 21 Wellington Elementary
- 7 Westhill Elementary
- 13 Woodin Elementary
- 26 Woodmoor Elementary

MONROE DISTRICT

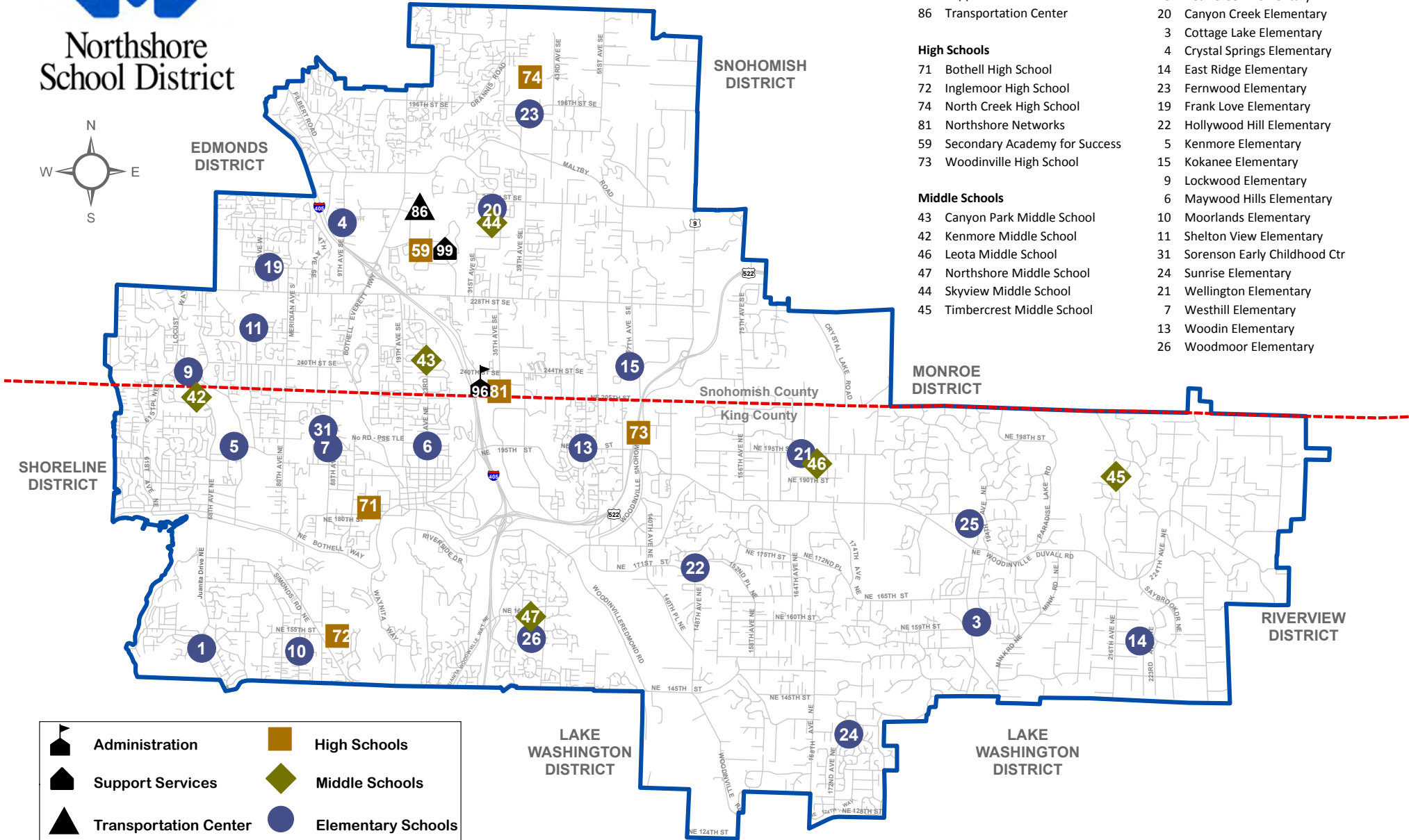
RIVERVIEW DISTRICT

SHORELINE DISTRICT

LAKE WASHINGTON DISTRICT

LAKE WASHINGTON DISTRICT

	Administration		High Schools
	Support Services		Middle Schools
	Transportation Center		Elementary Schools





Northshore School District No. 417

3330 Monte Villa Parkway
Bothell, WA 98021- 8972
425.408.6000

English Information Line.....425.408.6001
Bilingual Message Line.....425.408.6014
Spanish Information Line.....425.408.6024
Athletic Fields Rain-Out Line.....425.408.6020

www.nsd.org

Follow us:

 @northshoreschooldistrict

 @northshore_sd  @northshore_supt

 @teamnorthshore

INTERPRETER/TRANSLATION SERVICES FOR PARENTS

Your child's education is very important. As the parent/guardian of a Northshore student, you have the right to participate in your child's education, including communicating with teachers and staff about your child. Northshore offers interpreter and translation services to parents free of charge. We encourage you to tell someone at your child's school if you need an interpreter or a translation. Please contact your school office or 425-408-6014 if you have any questions or concerns about Northshore's language services.

貴子弟的教育是很重要的, 基於您是 Northshore 的家長/監護人, 您有參與 貴子弟教育的權利, 包括與老師及職員做學生方面的溝通, 所有的口譯及筆譯服務對家長都是免費的. Northshore 校方鼓勵您若需要口譯員服務及筆譯服務請告知 任何校方人士, Northshore 若你有其它這方面的問題或任何擔憂, 請聯絡學校辦公室或致電辦公室, 425-408-6014.

귀댁 자녀의 교육이 매우 중요합니다. Northshore 노스쇼어학군의 학생 학부모/보호자로서, 귀하께서는, 귀자녀에 관해서 교사와 임원들과 대화하는 것도 포함하여, 귀자녀의 교육에 개입할 권리가 있습니다. Northshore 노스쇼어에서는 '학부모님께' '통번역' '서비스'를 '무료'로 '제공'하고 '있습니다.' '만일' '귀하께서' '통번역이' '필요'하시면 '서슴치' '마시고' '귀자녀' '학교에' '있는' '누구에게'

연락하시기를 격려드립니다. Northshore만일 노스쇼어 언어 서비스에 대해서 질문이나 우려가 있으시면 귀학교나 (425)408-6014로 연락 바랍니다.

మతీపలీల చదువు చాలా పర్రాముఖ్యమైనదీ. Northshore వోడ్యూర్యోధోయొక్క తలీలందడోరులు/ సంరక్షకునోగో మతీకుమారునో/కుమార్తొయొక్క ఉపాధ్యాయులు మరొయ్య సోబబందోతో పలీల చదువు వోషయమలై సంభాషించడానోక మోరు హక్కకు కలగోయనోనారు. Northshore తలీలందడోరుల క్కొరకు దుబాసోలక అనువాద సవలను ఉచితంగా అందోసోతుందో. మతీపలీలలు అభ్యయసించో పాఠశాలవద్ద మోరు అవసరమలైన దుబాసోలక అనువాదక సవలను గూర్చో మోతో తలీయజ్యయమనో మోమములను పర్రోత సహసోతునోనాము. Northshore పాఠశాల యొక్క భాషా సవల నోమతీతో మతీకు ఏవలైనా పరశ్శనలు లోదా అందోజనలునోనటోలలైతో, దయచోసో మో పాఠశాల అసోసునందు సంపరదించడో లక 425-408-6014 కాల చోయడో.

Образование вашего ребенка имеет большое значение. Являясь родителем / опекуном ученика округа Northshore, вы имеете право на участие в его образовании, в том числе на общение с учителями и персоналом школы по вопросам, касающимся вашего ребенка. Школьный округ Northshore предлагает родителям бесплатные услуги устного и письменного перевода. Если вам требуется помощь устного или письменного переводчика, сообщите об этом кому-либо из персонала школы, в которой

учится ваш ребенок. Свяжитесь с администрацией школы или со по телефону 425-408-6014, если у вас возникнут какие-либо вопросы или трудности со службой переводов Northshore.

Sự giáo dục của con quý vị là rất quan trọng. Là phụ huynh/người giám hộ của học sinh Northshore, quý vị có quyền tham gia chương trình giáo dục của con mình, gồm có việc liên lạc với giáo viên và nhân viên liên quan đến con quý vị. Northshore cung cấp dịch vụ thông dịch và biên dịch miễn phí cho phụ huynh. Chúng tôi khuyến khích quý vị nên thông báo cho một nhân viên tại trường học của con quý vị nếu quý vị cần thông dịch viên hoặc tài liệu dịch. Vui lòng liên hệ văn phòng nhà trường hoặc qua số 425-408-6014 nếu quý vị có bất kỳ thắc mắc hay quan ngại nào về các dịch vụ ngôn ngữ của Northshore.

La educación de su hijo(a) es muy importante. Como padre/tutor de un alumno de Northshore, usted tiene derecho a participar en la educación de su hijo(a), esto incluye comunicarse con los profesores y el personal para hablar sobre su hijo(a). Northshore ofrece servicios de traducción e interpretación sin costo para los padres. Si usted necesita un intérprete o una traducción por favor coméntelo con alguien de la escuela donde estudia su hijo(a). Por favor contacte a la dirección de la escuela o a al 425-408-6014 si tiene preguntas o inquietudes relacionadas con los servicios de traducción e interpretación de Northshore.

NON-PROFIT
U.S. POSTAGE
PAID
Permit #6
Bothell, WA