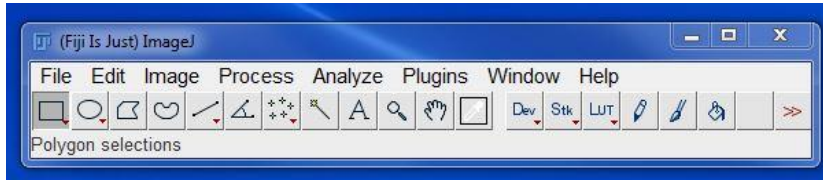
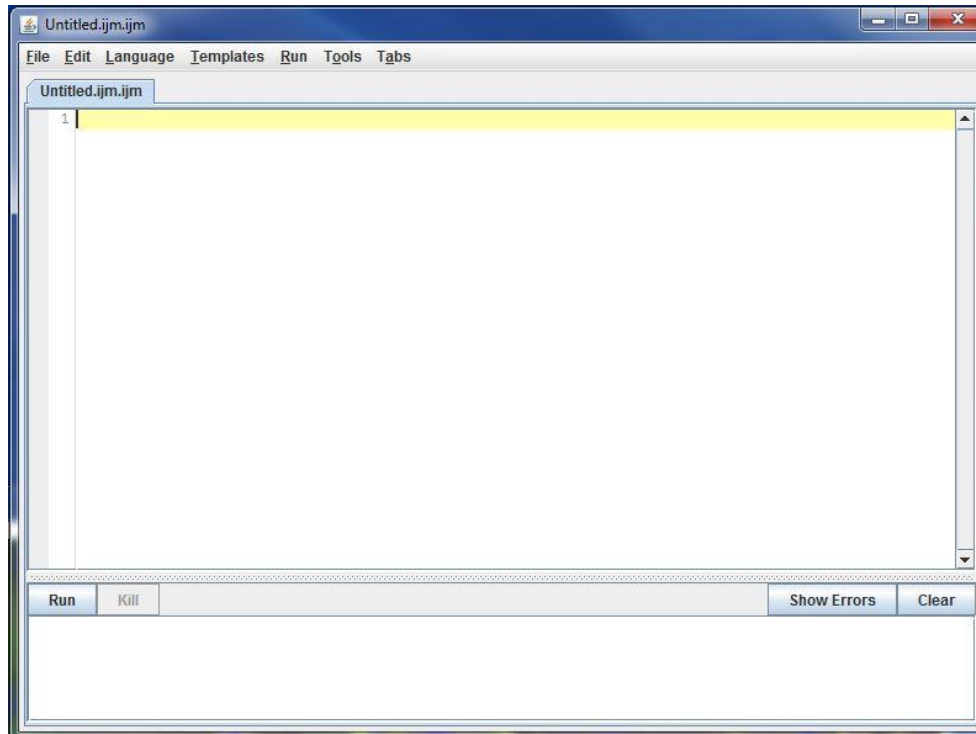


## How to make a zoomed-in inset into your image (for publication)

1. Go to website: [https://imagej.nih.gov/ij/macros/tools/Zoom in Images and Stacks.txt](https://imagej.nih.gov/ij/macros/tools/Zoom%20in%20Images%20and%20Stacks.txt)
2. Copy the content in this website (Please copy everything).
3. Then open your ImageJ or FIJI.



4. Next, simultaneously press "Ctrl"+ "Shift"+ "n" on the keyboard, this will open an editor's window as shown bellow.

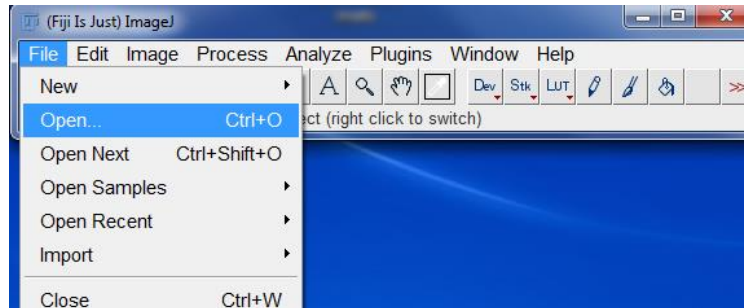


5. Past (Ctrl+V) everything you have copied from the website in step 1 in to the editor's window.

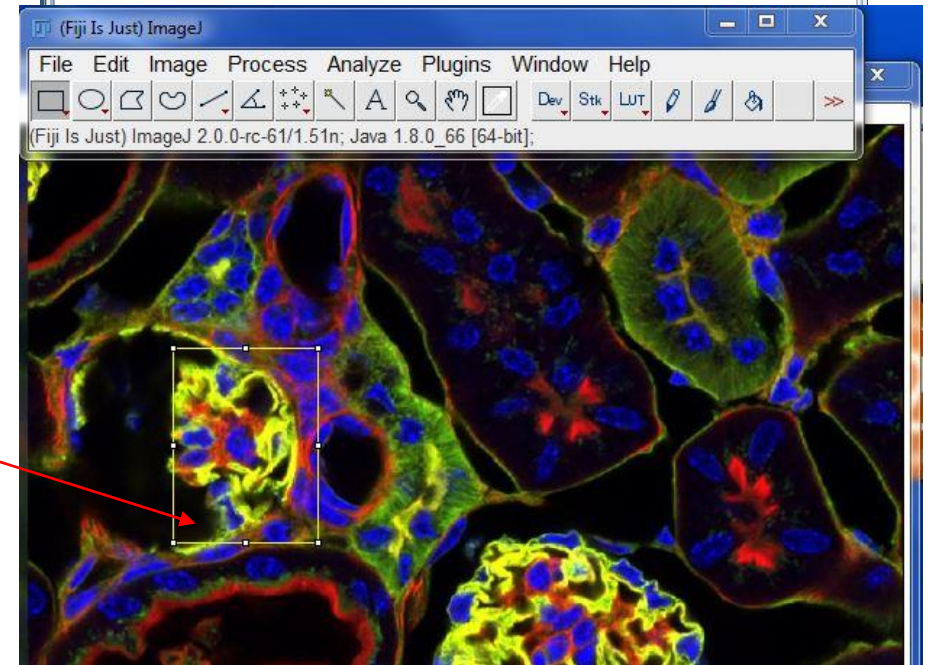
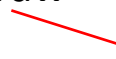
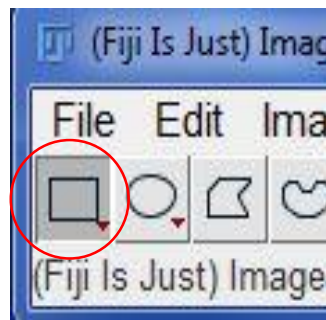


```
12 // - click to apply the choice
13 //
14 //
15 // Author: Gilles Carpentier, Faculte des Sciences et
16 // Technologie, Universite Paris Est Creteil Val de Marne, France
17 // More information on the "image.bio.methods" web site at the http://image.bio.methods.free.fr/image
18 //
19 var zoomValue=2, suf="-zoom", red=0, green=0, blue=0, surOr1=1, surZoom=2,click=1;
20 var showDestination=1, showInitialSelection=1, FSlice=1, TSlice=1;
21
22 macro "Zoom in Images and Stacks Action Tool - C222Da9Cfff000D01D02D03D0a0b0cD0d0e0fD10D11D12D1D0"
23 requires("1.44j");
24 setBatchMode (true);
25 if (selectionType() != 0) exit ("This tool requires a rectangular selection");
26 getDimensions(width, height, channels, slices, frames);
27 getSelectionBounds(x, y, widthSel, heightSel);
28 movieID = getImageID(); movieName = getTitle();
29 getCurentColors (); currentSlice=getSliceNumber(); FSlice=currentSlice; //TSlice=slices;
30 run("Add Selection...", "stroke=green width=1 fill=none new");
31 run("Select None");
32 ok=-1;
33 settings (ok,widthSel, width, heightSel, height, slices, currentSlice);
```

6. Next, open an image from Image J or FIJI. Do not close your editor's window.



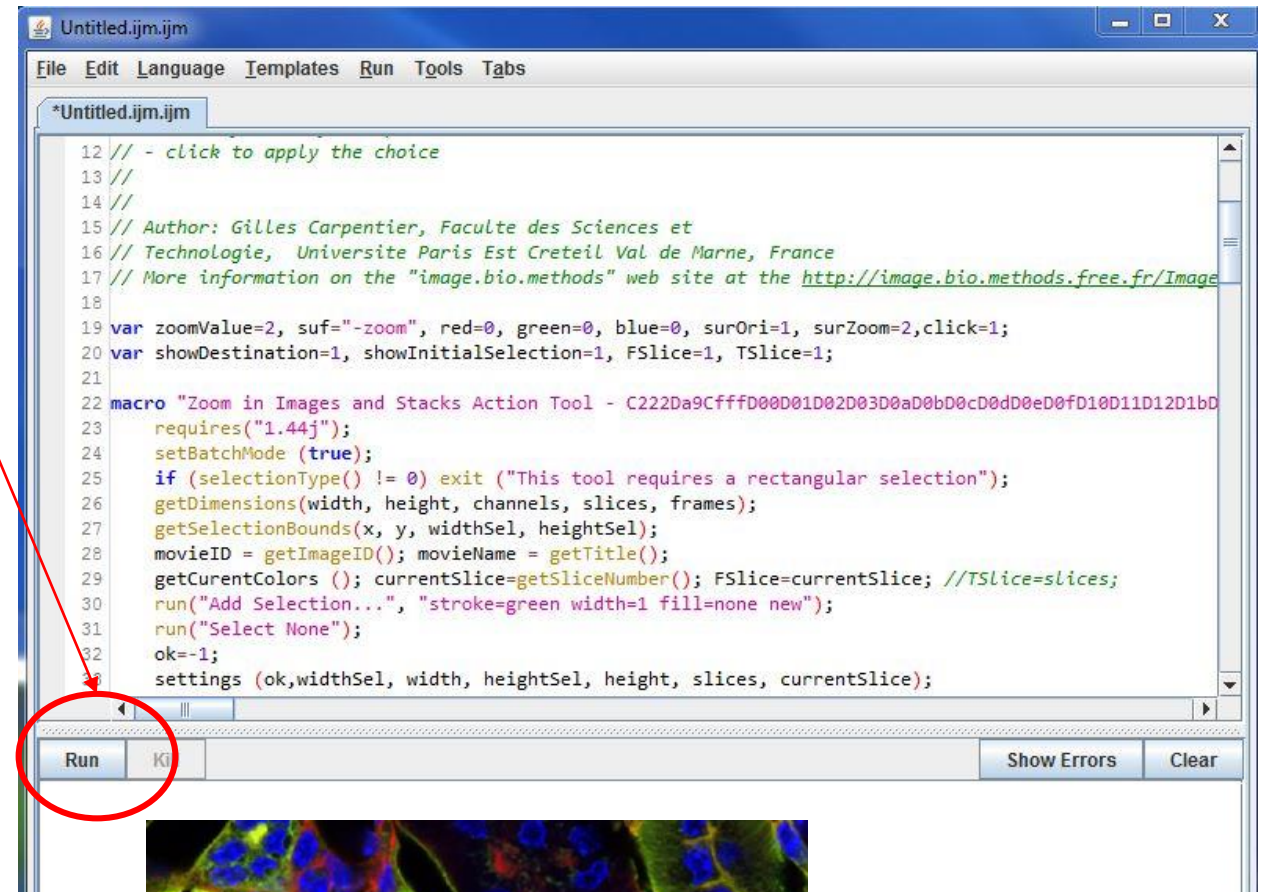
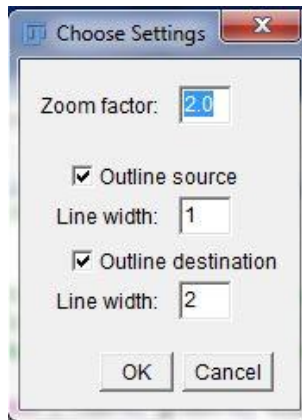
7. Select the Rectangular ROI (region of interest) in Image J and draw an ROI in the opened image



Author: Chaowei Shang, 2017

8. Then go to the editor's window and click **Run**

9. Next, a Choose Settings window will pop up. This allows you to select the zoom in factor, and the thickness of the border of the ROI. Click **OK** after adjusting the settings.



10. After clicking **OK**, you will see a red rectangular in your image, this shows you where your zoomed-in inset will be positioned.

11. Move your cursor around to place the red rectangular to your desired position, and left click on your mouse. Now your inset will show in the image.

12. Save your new image.

