

A high-angle, wide shot of a large crowd of students walking along a paved path that curves through a lush, green campus. The path is lined with tall, mature trees on the left and a grassy area with some plants on the right. In the background, a brick building with large windows is visible. The students are dressed in casual attire, and many are carrying backpacks. The overall atmosphere is vibrant and active.

**OPEN your mind**  
to the possibilities



Oregon  
Episcopal  
School

# OPEN TO CONNECTING



**Oregon Episcopal School prepares students for higher education and lifelong learning.** Since 1869, our mission has been to inspire intellectual, physical, social, emotional, artistic, and spiritual growth so that students realize their power for good as citizens of local and world communities.



#### **Student Relationships.**

With approximately 315 students in our Upper School, students really get to know one another. School begins with team-building trips to the beach or mountains, so friendships can form before classes begin.



**Wellness.** We support a holistic approach to well-being and academic engagement. Exam week reflects our commitment to mindfulness, and is often accompanied by tea and snacks, yoga sessions, and bunny petting time.



**Teacher Relationships.** Our average class size of 14 enables students to develop meaningful connections with our knowledgeable, passionate, and approachable faculty.



**Gathering and Reflection.** Our Upper School community gathers daily to collaborate on campus issues, thoughtfully discuss world events, and celebrate accomplishments. It is a lived expression of how much we support one another.

# OPEN TO NEW LIVING EXPERIENCES



**Home Away from Home.** Students share a light-filled, comfortable room with one roommate. They join smaller Dorm Families that gather regularly for dinner and warm conversations.



**Our Residential Life Program attracts boarding students from all over the world who share their unique cultures and perspectives.** Our international student community is led by an incredibly caring group of faculty dorm parents who ensure that students feel loved and supported.



**Diversity and Inclusion.** Whether discussing macroeconomics with a roommate from Thailand, working on a service learning project with a friend from Jamaica, or executing soccer drills with a peer from Japan, our students are continually learning with—and from—one another.



**Empathy and Support.** With 10 dorm parents, our 60 boarding students are fully supported. Our Dorm Academic Resource Team offers additional academic guidance throughout the school year.



**Enduring Friendships.** The close relationships that develop here continue beyond our students' years at OES. Our alumni enjoy having friends to visit around the world.

# OPEN TO EXPERIENTIAL LEARNING



## Inquiry and Exploration

Our students engage deeply with the subjects they're learning, and take an empowered role in the evolution of their own education.

Hands-on, discussion-based, project-oriented learning happens inside and outside the classroom.

**Scientific Research.** When it comes to advanced scientific research, our students are determined, regularly representing OES at competitive expos like the International Science and Engineering Fair. Students dive into an annual science research project based on their specific areas of interest.



### Service Learning.

We inspire students to explore their power for good, connect to the world around them, create ways to help others, and commit to lifelong service. We aspire to opening hearts and changing lives forever.



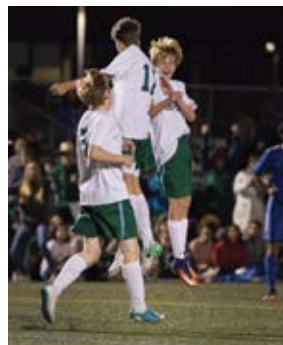
### Trips and Activities.

The Pacific Northwest is known for its natural beauty. There are many opportunities for students to go hiking, rafting, rock climbing, snowboarding, surfing and more. OES students have a choice of over 30 extracurricular activities including Aikido, Model United Nations, Greenhouse, Business Club, Robotics, Ukulele, Mock Trial, Stagecraft, Speech and Debate, Yoga, Yearbook and Coding.

## WINTERIM ADVENTURES

Upper School students and faculty work together to develop classes and experiences that take them anywhere from dogsledding in Minnesota to practicing conversational French in Paris. Winterim is a chance for students to follow their passions, learn new skills, and work with peers and teachers in unique situations.





# OPEN TO ATHLETICISM



## A sense of belonging is essential.

Our no-cut sports policy ensures that every student who wants to play, gets to play, whatever the sport, and feels the joy of being part of a team. Our growing athletics program offers countless opportunities for self-confidence and leadership. Sports include: soccer, cross country, volleyball, basketball, skiing, tennis, track, lacrosse, golf, and fencing.



SINCE 2005, THE  
**AARDVARKS**  
HAVE BROUGHT HOME

**46**

STATE TEAM  
CHAMPIONSHIPS

**34**

STATE INDIVIDUAL  
CHAMPIONSHIPS

**59**

DISTRICT  
TEAM  
CHAMPIONSHIPS

**54**

DISTRICT  
INDIVIDUAL  
CHAMPIONSHIPS



## Supporting artistic vision and expression.

OES students have access to a music recording studio, media lab, woodshop, darkroom, ceramics studio, apparel construction area, 3D printers, and multiple creative spaces.

Our music program celebrates symphonic and jazz bands, concert and *a capella* choirs, and a music production class. Our thriving theater arts program hosts several productions throughout the school year, culminating in our annual spring “One Acts,” where student-written plays are selected for full production.

# OPEN TO CREATIVE EXPLORATION



# OPEN TO LIMITLESS OPPORTUNITY



**What does the future hold for OES graduates?** Anything. Everything. Our college counselors help students navigate high school with an eye toward what comes next, and partner with students and parents to identify colleges that pique students' interests and support their goals. Students are front and center in the process. Wherever they go, our alumni build the kind of lives only open minds can imagine.

## Recent graduates have attended:

Barnard College	New York University
Bates College	Northeastern University
Boston University	Northwestern University
Brown University	Occidental College
California Polytechnic State University	Oregon State University
University of California, Berkeley	University of Oregon
University of California, Los Angeles	Pitzer College
Carnegie Mellon	Pomona College
Case Western Reserve	University of Portland
Chapman University	Princeton University
University of Colorado, Boulder	University of Puget Sound
Colorado College	Purdue University
Cornell University	Rhode Island School of Design
Dartmouth College	University of Rochester
Davidson College	University of San Diego
Deep Springs College	Santa Clara University
University of Denver	Scripps College
Emory University	University of Southern California
Gonzaga University	Stanford University
Grinnell College	Swarthmore College
Harvard College	Syracuse University
Harvey Mudd College	The New School
Howard University	Tufts University
Loyola Marymount University	Vassar College
Macalester College	Wake Forest University
Massachusetts Institute of Technology	University of Washington
University of Michigan	Wesleyan University
Middlebury College	Whitman College



## School Profile

- Established 1869
- Pre-K to Grade 12
- Independent, co-ed, day/boarding
- 870 students, including 60 boarding students
- Student-to-Faculty ratio: 7:1
- Average class size: 14
- Mascot: Aardvark



## OES Campus

- 59 wooded acres with two wetland areas
- Stores and restaurants within walking distance
- 7-minute drive to shopping mall
- 15-minute drive to downtown Portland
- 25-minute drive to Portland International Airport
- On-campus ropes course, nature trails, gardens, greenhouse, and multiple indoor and outdoor athletic facilities



## Portland, Oregon

- Located on the West Coast, south of Seattle
- Four seasons with mild winters
- Known for its natural beauty
- Mountains and ocean an hour away
- Diverse outdoor adventures
- Rich arts, food, and sports scene



# EXPLORE OES

## QUESTIONS?

For more information or to schedule a visit, contact the OES Admissions Office at 503-768-3115 or [admit@oes.edu](mailto:admit@oes.edu)

## READY TO APPLY?

Find information and step-by-step instructions at [oes.edu/apply](https://oes.edu/apply).