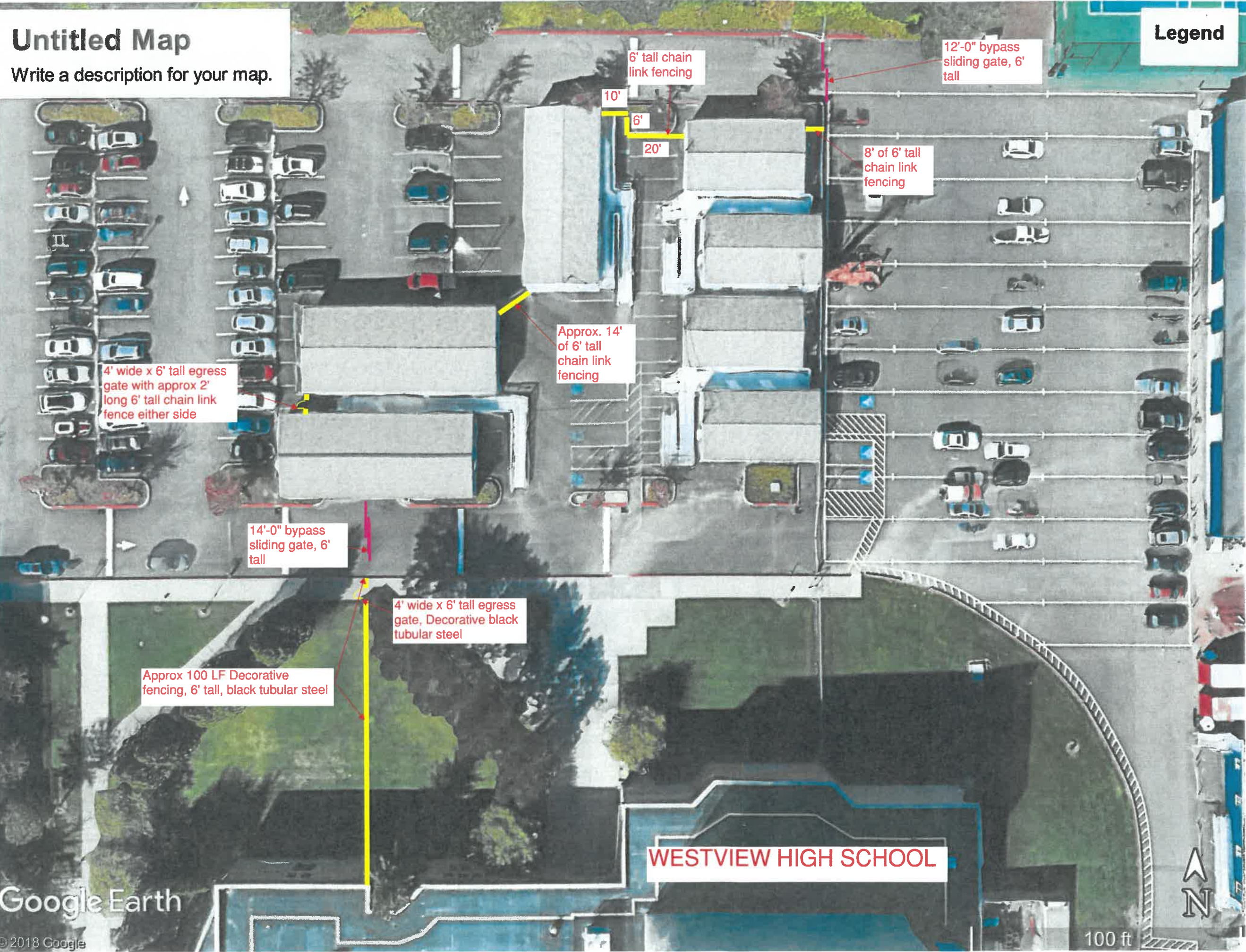


Untitled Map

Write a description for your map.

Legend



Untitled Map

Write a description for your map.

WESTVIEW HIGH SCHOOL

Legend

4200 NW 185th Ave, Portland, OR 972

Approx 38' of 6'
tall decorative
tube steel fencing

20' long
sliding gate 6'
tall

Google Earth

© 2018 Google



100 ft

SUNSET HIGH SCHOOL

CURB RETURN DATA:

C1	R = 30.00' L = 15.53' Δ = 29.66
C2	R = 30.00' L = 15.53' Δ = 29.66
C3	R = 28.00' L = 43.98' Δ = 90.00

CONSTRUCTION NOTES:

- 1 SAWCUT AND REMOVE EXISTING ASPHALT AND CONCRETE.
- 2 CONSTRUCT STANDARD CURB PER DETAIL ON SHEET C4.0.
- 3 INSTALL ASPHALT SECTION PER DETAIL ON SHEET C4.0.
- 4 CONSTRUCT CONCRETE SIDEWALK PER DETAIL ON SHEET C4.0.
- 5 INSTALL INLET PROTECTION PER DETAIL ON SHEET C4.3.
- 6 REMOVE EXISTING ASPHALT SPEED BUMP.
- 7 INSTALL SPEED BUMP PER DETAIL ON SHEET C4.2.
- 8 PROTECT EXISTING TREES. INSTALL 4' ORANGE FENCE AT EDGE OF ROOT ZONE OR AS ARBORIST RECOMMENDS. SEE DETAIL ON SHEET C4.3. CALL ARBORIST IF TREE ROOTS ARE ENCOUNTERED.
- 9 EXISTING CURB TO REMAIN.
- 10 EXISTING COLUMNS TO BE REMOVED.
- 11 CONCRETE TRUCK WASH OUT BASIN PER DETAIL ON SHEET C4.3.
- 13 CONSTRUCT HANDICAP RAMP WITH TRUNCATED DOMES PER DETAIL ON SHEET C4.0.
- 15 CONSTRUCT CONCRETE STAIR AND HANDRAIL. SEE ARCHITECT SHEET A2.13A FOR MORE INFORMATION.

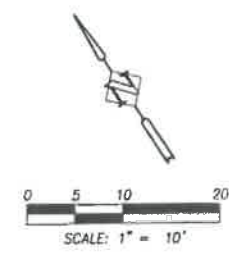
EROSION CONTROL NOTES:

1. CONTRACTOR SHALL INSTALL AND MAINTAIN EROSION / SEDIMENTATION CONTROL DURING CONSTRUCTION (ANY TIME OF THE YEAR), PER THE EROSION PREVENTION AND SEDIMENT CONTROL PLANNING AND DESIGN MANUAL, DATED DEC. 2000 AND CLEAN WATER SERVICES DESIGN AND CONSTRUCTION STANDARDS, R&O 07-20, CHAPTER 6.
2. APPROVAL OF THIS EROSION / SEDIMENTATION CONTROL (ESC) PLAN DOES NOT CONSTITUTE AN APPROVAL OF PERMANENT ROAD OR DRAINAGE DESIGN (E.G., SIZE AND LOCATION OF ROADS, PIPES, RESTRICTIONS, CHANNELS, RETENTION FACILITIES, UTILITIES, ETC.).
3. THE IMPLEMENTATION OF THESE ESC PLANS AND CONSTRUCTION, MAINTENANCE, REPLACEMENT AND UPGRADING OF THESE ESC FACILITIES IS THE RESPONSIBILITY OF THE CONTRACTOR UNTIL ALL CONSTRUCTION IS COMPLETED AND APPROVED BY THE CITY OF BEAVERTON AND VEGETATION / LANDSCAPING IS ESTABLISHED. THE DEVELOPER SHALL BE RESPONSIBLE FOR MAINTENANCE OF ESC AFTER THE PROJECT IS APPROVED AND UNTIL THE LOTS ARE SOLD.
4. THE BOUNDARIES OF THE CLEARING LIMITS SHOWN ON THIS PLAN SHALL BE CLEARLY FLAGGED IN THE FIELD PRIOR TO CONSTRUCTION. DURING THE CONSTRUCTION PERIOD, NO DISTURBANCE BEYOND THE FLAGGED CLEARING SHALL BE PERMITTED. THE FLAGGING SHALL BE MAINTAINED BY THE APPLICANT / CONTRACTOR FOR THE DURATION OF THE CONSTRUCTION.
5. THE ESC FACILITIES SHOWN ON THIS PLAN MUST BE CONSTRUCTED IN CONJUNCTION WITH ALL CLEARING AND GRADING ACTIVITIES, AND IN SUCH A MANNER AS TO INSURE THAT SEDIMENT AND SEDIMENT-LADEN WATER DOES NOT ENTER THE DRAINAGE SYSTEM, ROADWAYS, OR VIOLATE APPLICABLE WATER STANDARDS.
6. THE ESC FACILITIES SHOWN ON THIS PLAN ARE MINIMUM REQUIREMENTS FOR ANTICIPATED SITE CONDITIONS. DURING CONSTRUCTION PERIOD, THESE ESC FACILITIES SHALL BE UPGRADED AS NEEDED FOR UNEXPECTED STORM EVENTS AND TO ENSURE THAT SEDIMENT AND SEDIMENT-LADEN WATER DOES NOT LEAVE THE SITE.
7. THE ESC FACILITIES SHALL BE INSPECTED DAILY BY THE APPLICANT / CONTRACTOR AND MAINTAINED AS NECESSARY TO ENSURE THEIR CONTINUED FUNCTIONING.
8. THE ESC FACILITIES ON INACTIVE SITES SHALL BE INSPECTED AND MAINTAINED A MINIMUM OF ONCE EVERY TWO WEEKS OR WITHIN 24 HOURS FOLLOWING A STORM EVENT.
9. REMOVAL OF TRAPPED SEDIMENT IN A SEDIMENT BASIN OR SEDIMENT TRAP MUST OCCUR WHEN THE SEDIMENT RETENTION CAPACITY HAS BEEN REDUCED BY FIFTY (50) PERCENT AND AT COMPLETION OF PROJECT.
10. STABILIZED GRAVEL ENTRANCES SHALL BE INSTALLED AT THE BEGINNING OF CONSTRUCTION AND MAINTAINED FOR THE DURATION OF THE PROJECT. ADDITIONAL MEASURES MAY BE REQUIRED TO INSURE THAT ALL PAVED AREAS ARE KEPT CLEAN FOR THE DURATION OF THE PROJECT.
11. STORM DRAIN INLETS, BASINS AND AREA DRAINS SHALL BE PROTECTED UNTIL PAVEMENT SURFACES ARE COMPLETED AND/OR VEGETATION IS RE-ESTABLISHED.
12. PAVEMENT SURFACES AND VEGETATION ARE TO BE PLACED AS RAPIDLY AS POSSIBLE.
13. SEEDING SHALL BE PERFORMED NO LATER THAN SEPTEMBER 1ST FOR EACH PHASE OF CONSTRUCTION.
14. IF THERE ARE EXPOSED SOILS, OR SOILS ARE NOT FULLY ESTABLISHED FROM OCTOBER 1ST THROUGH MAY 31ST, THE WET WEATHER EROSION CONTROL MEASURES WILL BE IN EFFECT. SEE CHAPTER 6 OF THE EROSION PREVENTION AND SEDIMENT CONTROL PLANNING AND DESIGN MANUAL FOR REQUIREMENTS.
15. ESC MEASURES SHALL BE REMOVED BY THE DEVELOPER / OWNER WHEN VEGETATION IS FULLY ESTABLISHED.
16. NOTIFY CITY OF BEAVERTON CONSTRUCTION INSPECTOR 24 HOURS PRIOR TO ANY WORK ON THIS SITE.

WET WEATHER EROSION CONTROL

ON SEPTEMBER 1ST OF EACH YEAR, IF THERE ARE EXPOSED SOILS, DISTURBED AREAS, OR GROUND-COVER VEGETATION NOT FULLY ESTABLISHED SUFFICIENT TO PREVENT EROSION, A SPECIFIC EROSION CONTROL PLAN SHALL BE PREPARED BASED ON THE EXISTING AND EXPECTED SITE CONDITIONS USING THE WET WEATHER EROSION PREVENTION MEASURES (SEE EROSION PREVENTION AND SEDIMENT CONTROL PLANNING AND DESIGN MANUAL CHAPTER 4 FOR REQUIREMENTS). FOR SURFACE WATER FACILITIES, FIBER MATTING SHALL BE INSTALLED IN ALL AREAS EXPOSED TO WATER FLOW OR INUNDATION; FREE-FLOATING MULCH SHALL NOT BE USED IN AREAS SUBJECT TO INUNDATION. FIBER MATTING SHALL EITHER BE SEED (PER THE DESIGN) OR PLACED PRIOR TO PLANTING OF PLUGS, CUTTINGS, REEDS, RUSHES, OR SHRUBS. ALL MEASURES AND SPECIFICATIONS FOR MATERIALS USED SHALL BE PER PLAN OR AS SPECIFICALLY APPROVED BY THE ENGINEER AND CITY INSPECTOR. IF ANY ADDITIONAL AREAS BECOME EXPOSED, DISTURBED, OR STRIPPED OF VEGETATION BETWEEN OCTOBER 1ST AND MAY 31ST, THE PLAN SHALL BE REVISED OR OTHERWISE EXPANDED PER THE STANDARDS AND AS DIRECTED BY THE ENGINEER AND CITY INSPECTOR. PRIOR TO OCTOBER 1ST OF EACH YEAR, WET WEATHER MEASURES SHALL BE INSTALLED AND FULLY FUNCTIONAL.

Harper Houf Peterson Righellis Inc.
ENGINEERS • PLANNERS
LANDSCAPE ARCHITECTS • SURVEYORS
205 SE Spokane Street, Suite 200, Portland, OR 97202
phone: 503.221.1191 www.hhpr.com fax: 503.221.1171



PERMIT SET

**SUNSET HIGH SCHOOL
TITLE IX AND UPGRADES -
TEAM ROOM BUILDING**

Beaverton, OR School District #48

BLRB architects
TACOMA | SPOKANE | PORTLAND | BEND

Drawing Title:
**GRADING AND EROSION
CONTROL PLAN**

Date: NOVEMBER 23, 2015	Drawn By:
Revised: 4/21/16	Project No. 14.84P
Stamp	Sheet No.

C2.0

BLRB ARCHITECTS, P.S. BSD100-C2_0.dwg

4-27-16

SUNSET HIGH SCHOOL

Write a description for your map.

Legend

Add 2' tall section to existing 4' tall fence

Option 1 - 3' wide x 6' tall egress gate

Option 1 - 6' tall chain link fencing

Approx 165'

10'

30'

10'

35'

6' tall chain link fencing

Approx 50' of 6' tall chain link fencing

3'

Google Earth

© 2018 Google

100 ft



SUNSET HIGH SCHOOL

Legend

- 13800 Block NW Cornell (Sunset HS)

5' wide by
6' tall
egress gate

Approx 54' of 6' tall
chain link fencing

10' wide 6'
tall bypass
sliding fence

Approx 4' of 6' tall
chain link fencing

Remove existing
swing gate

Google Earth

© 2018 Google

90 ft

Untitled Map

Beaverton High School SE Merle Davies

Legend

2'

3'

6'

4' wide x 6' tall
black tube steel
egress gate

6' tall decorative
black tube steel
fencing to match
existing of school

Google Earth

© 2018 Google



50 ft

BEAVERTON HIGH SCHOOL

Legend

 Beaverton High School

4' wide x 6' tall
egress gate to
match fencing

3'

11'

6' tall fencing to
match existing fence.
Approx. length
required.

Existing 6' tall
decorative black
tube steel fencing

Google Earth

© 2018 Google

100 ft



Untitled Map

Write a description for your map.

Legend

Beaverton High School

Add 2-4' wide x 6' tall decorative gates to match existing fence

Google Earth

© 2018 Google



100 ft